

ACCEPTED AND APPROVED BY:

PROPETRO**JOB SUMMARY****SB173****CEMENTING - ROCKY MOUNTAIN DIVISION**

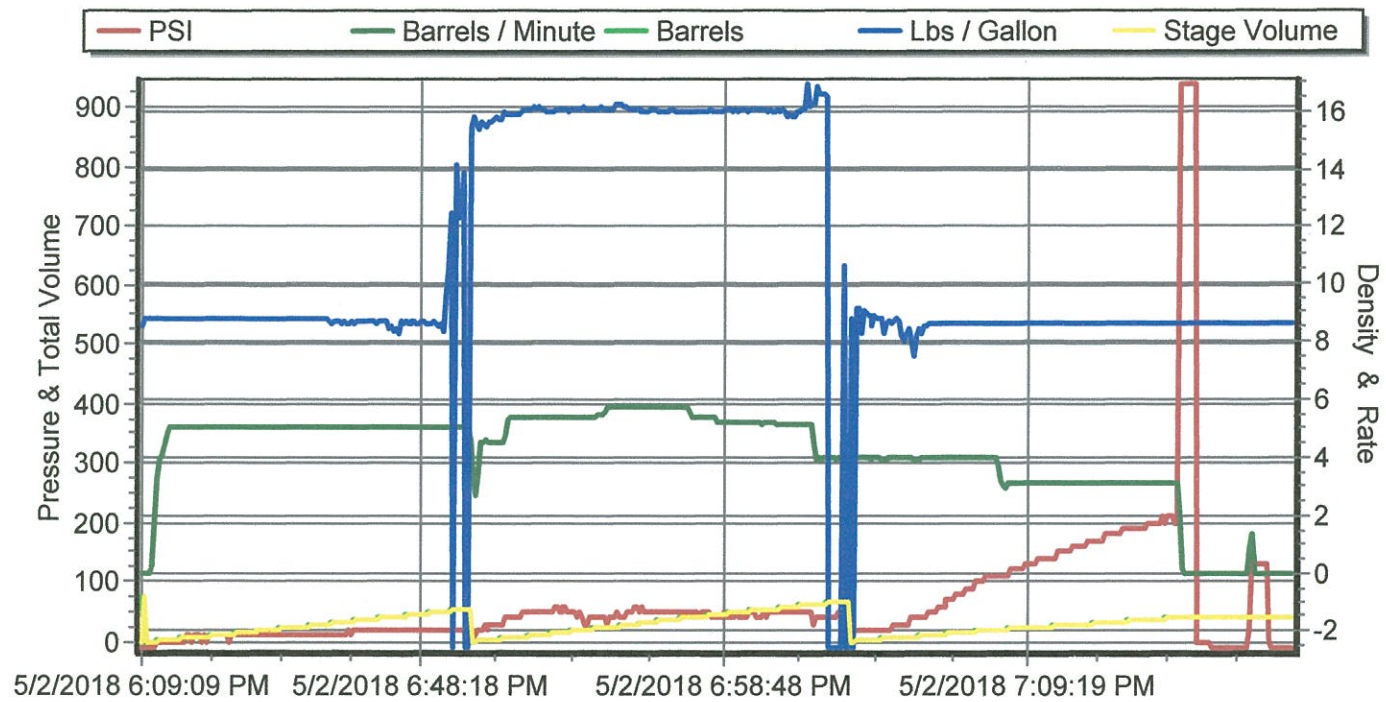
P.O. BOX 827 - VERNAL UT, 84078 - (435) 789-7407

BAYLESS**RIO BLANCO****RIG NO:****WR 14-15H2****5/2/2018**

DESCRIPTION	WGT/GRADE	THREAD	DEPTH FROM	DEPTH TO
SURFACE CSG SIZE: 9 5/8	36	8 RND	0	533
INTER CSG SIZE:				
LINER CSG SIZE:				
MATERIALS FURNISHED	SACKS	SLURRY WT PPG	SLURRY YIELD FT3	WATER GAL/SK
PREMIUM G CMT 2% CACLA.1/4# SK FLOCELE	280	15.8	1.15	5

N/A**STEVE#1373/KEVIN#58/JEFF#65****GOOD RETURNS THRU OUT JOB LANDED PLUG FLOAT HELD 22 BBLS CEMENT TO SURFACE AND STAYED FULL.****STEVE****ACCEPTED AND APPROVED BY:**

SERIES 2000



SB173

P.O. BOX 827 - VERNAL UT, 84078 - (435) 789-7407

5-2-18

RIG NO:

DESCRIPTION	QTY	UNIT	RATE	AMOUNT
PUMP TRUCK MILEAGE	140	MILES	\$6.90	\$966.00
CREW TRUCK MILEAGE	140	MILES	\$4.05	\$567.00
PUMP CHARGE	500	FT		\$3,400.00
BLENDING CHARGE	292	FT3	\$3.80	\$1,109.60
DELIVERY CHARGE	943	TM	\$2.30	\$2,168.90

CEMENT

PREMIUM (G)	280	SKS	\$30.00	\$8,400.00
P-301	70	LBS	\$5.25	\$367.50
P-201	4	SKS	\$36.40	\$145.60
P-401	6	SKS	\$157.00	\$942.00

MISC.

			SUBTOTAL:	\$18,066.60
			DISCOUNT:	\$9,936.63
			AFTER DISCOUNT:	\$8,129.97
			UTERO CHARGE:	
			TOTAL INVOICE:	\$8,129.97

steve

ACCEPTED AND APPROVED BY:

TAXES WILL BE ADDED ON INVOICE

*****ANY QUESTIONS OR CONCERNS PLEASE CALL*****

SB173

CEMENTING - ROCKY MNT VERNAL UTAH

P.O. BOX 827 - VERNAL UT, 84078 - (435) 789-7407

BAYLESS

5/2/2018

WR 14-15H2**RIG NO:**[illegible]

STEVE

ACCEPTED AND APPROVED BY:

PROPETRO**JOB SUMMARY****SB173****CEMENTING - ROCKY MOUNTAIN DIVISION**

P.O. BOX 827 - VERNAL UT, 84078 - (435) 789-7407

BAYLESS**RIO BLANCO****RIG NO:****WR 14-15H2****5/2/2018**

DESCRIPTION	WGT/GRADE	THREAD	DEPTH FROM	DEPTH TO
SURFACE CSG SIZE: 9 5/8	36	8 RND	0	533
INTER CSG SIZE:				
LINER CSG SIZE:				
MATERIALS FURNISHED	SACKS	SLURRY WT PPG	SLURRY YIELD FT3	WATER GAL/SK
PREMIUM G CMT 2% CACLA.1/4# SK FLOCELE	280	15.8	1.15	5

N/A**STEVE#1373/KEVIN#58/JEFF#65****GOOD RETURNS THRU OUT JOB LANDED PLUG FLOAT HELD 22 BBLS CEMENT TO SURFACE AND STAYED FULL.****STEVE****ACCEPTED AND APPROVED BY:**

SERIES 2000

