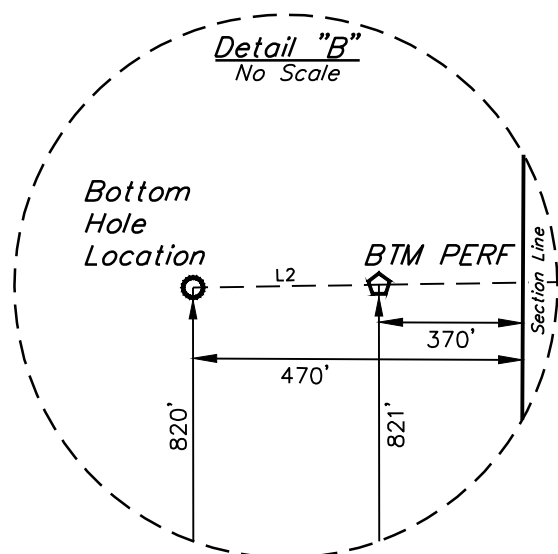
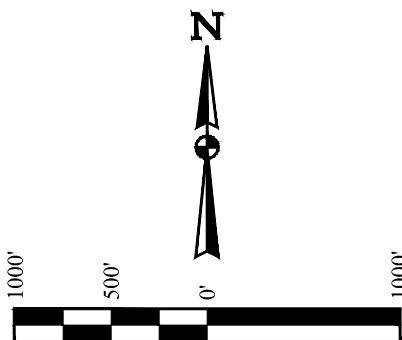


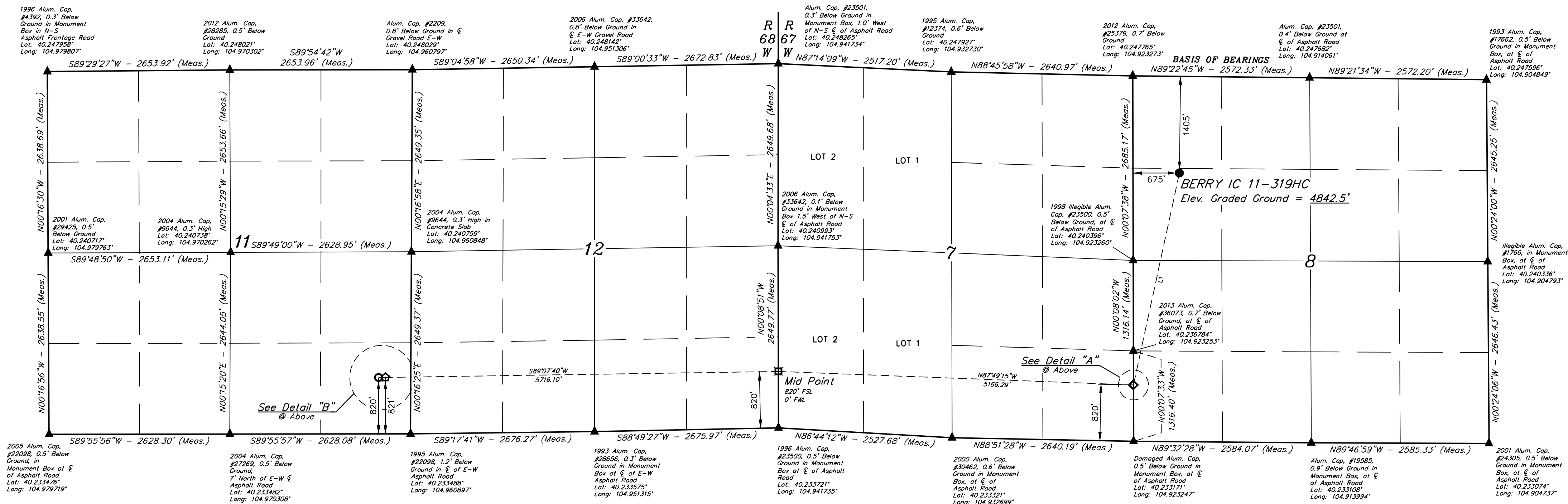
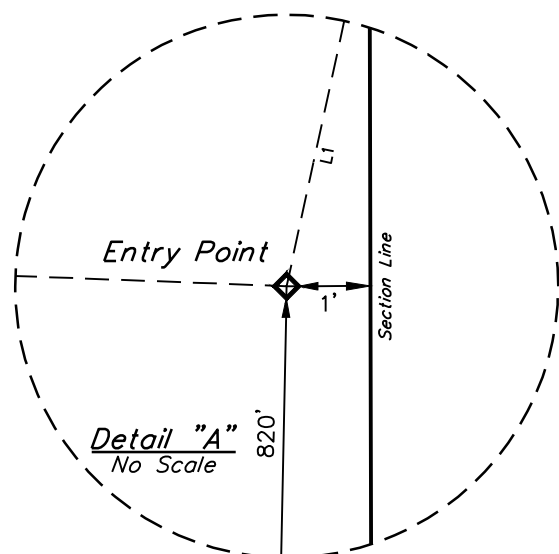
## GREAT WESTERN OPERATING COMPANY

**BERRY IC 11-319HC**  
**SW 1/4 NW 1/4, SECTION 8, T3N, R67W, 6th P.M.**  
**WELD COUNTY, COLORADO**

**BASIS OF ELEVATION**  
OPUS SOLUTION GENERATED NAVD 88



LINE TABLE		
LINE	DIRECTION	LENGTH
L1	S12°14'21"W	3155.64'
L2	S89°07'40"W	100.02'



**NOTE:**  
Distances referenced  
on plat to section lines  
are perpendicular.

LEGEND:

- = PROPOSED WELLHEAD.  
 ○ = BOTTOM HOLE LOCATION.  
 ◆ = ENTRY POINT.  
 ◻ = MID POINT.  
 ◐ = BTM PERF.  
 ▲ = SECTION CORNERS LOCATED. (NAD 83)

<b>NAD 83 (SURFACE LOCATION)</b>	<b>NAD 83 (ENTRY POINT)</b>	<b>NAD 83 (MID-POINT)</b>	<b>NAD 83 (BTM PERM)</b>	<b>NAD 83 (BOTTOM HOLE LOCATION)</b>
LATITUDE = 40°14'37.98" (104.243884)	LATITUDE = 40°14'07.52" (104.235422)	LATITUDE = 40°14'09.50" (104.235972)	LATITUDE = 40°14'08.67" (104.235742)	LATITUDE = 40°14'08.65" (104.235737)
LONGITUDE = 104°55'15.06" (104.920849)	LONGITUDE = 104°55'23.72" (104.923254)	LONGITUDE = 104°56'30.27" (104.941740)	LONGITUDE = 104°57'43.94" (104.962207)	LONGITUDE = 104°57'45.23" (104.962565)
<b>NAD 27 (SURFACE LOCATION)</b>	<b>NAD 27 (ENTRY POINT)</b>	<b>NAD 27 (MID-POINT)</b>	<b>NAD 27 (BTM PERM)</b>	<b>NAD 27 (BOTTOM HOLE LOCATION)</b>
LATITUDE = 40°14'38.04" (104.243900)	LATITUDE = 40°14'07.58" (104.235438)	LATITUDE = 40°14'09.56" (104.235988)	LATITUDE = 40°14'08.73" (104.235758)	LATITUDE = 40°14'08.71" (104.235754)
LONGITUDE = 104°55'13.14" (104.920918)	LONGITUDE = 104°55'21.80" (104.922723)	LONGITUDE = 104°56'28.35" (104.941208)	LONGITUDE = 104°57'42.03" (104.961674)	LONGITUDE = 104°57'43.32" (104.962032)

REV: 16 07-28-21 C.C. (NAME CHANGE, LATERAL CHANGE)



**UINTAH**  
ENGINEERING & LAND SURVEYING

**UELS, LLC**  
Corporate Office \* 85 South 200 East  
Vernal, UT 84078 \* (435) 789-1017

<b>SURVEYED BY</b>	ORION RICE, J.C.	05-06-20	<b>SCALE</b>
<b>DRAWN BY</b>	C.IVE	06-12-18	1" = 1000'

WELL LOCATION PLAT