

# Daily Operations Report

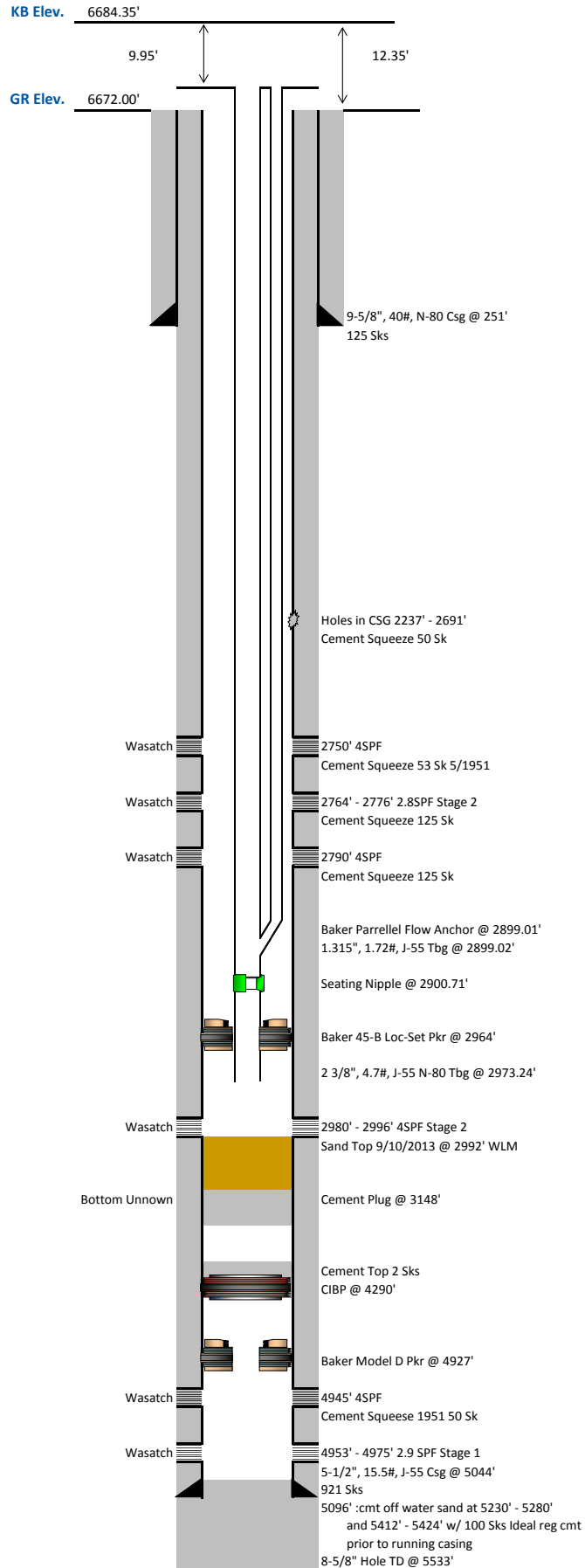
## Wellbore Diagram

<b>Well Name:</b>	BW Musser 6
<b>County, State</b>	Moffat, CO
<b>Legal Description:</b>	SE NE 4-11N-97W
<b>API:</b>	05-081-05447
<b>SHL:</b>	2378' FNL, 333' FEL
<b>Updated By:</b>	Jeff Bluemel
<b>Date Updated:</b>	9/11/2013
<b>Spud Date:</b>	4/22/1951
<b>TD Date:</b>	5/26/1951
<b>IP Date:</b>	5/30/1951
<b>Well TD:</b>	5,533
<b>Orientation:</b>	Vertical
<b>Plug Back MD:</b>	3,148
<b>Bridge Plug MD:</b>	4,290
<b>Producing Frac Jobs:</b>	1

<b>Latitude</b>	40.943064
<b>Longitude</b>	-108.288233

<b>As Of Completion</b>	7/3/2003
-------------------------	----------

All measurements are in KB  
unless otherwise specified.



**QUESTAR®**  
Wexpro

[illegible]

The above 2 3/8" String is landed in 4000# in tension, and the 1" string is stung into the parallel flow tube and landed 3000# in compression.

The above 2 3/8" String is landed in 4000# in tension, and the 1" string is stung into the parallel flow tube and landed 3000# in compression.

7/3/2003