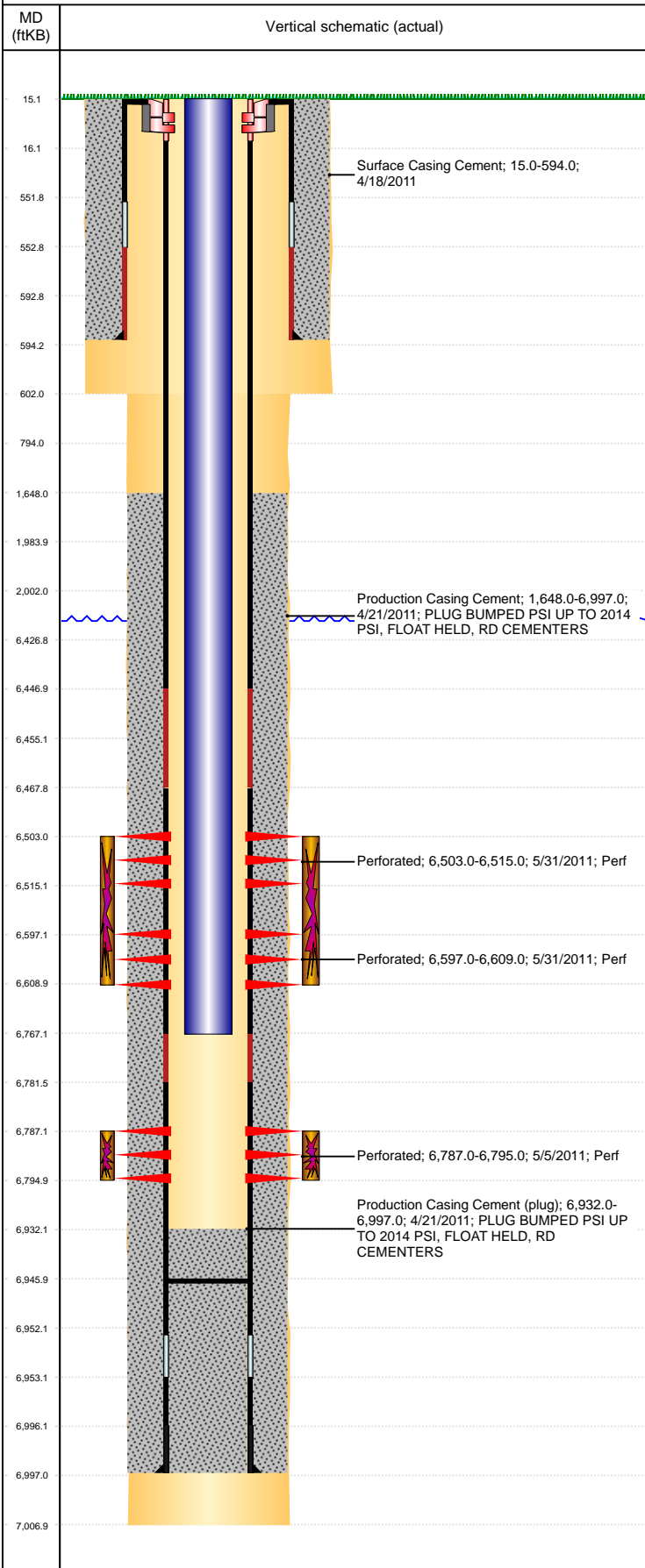


Well Name: MARLEY C01-18D

DEVIATED, ORIGINAL HOLE, 9/28/2021 5:28:45 PM



Well Header

API 05-123-31506	Business Unit DJ BASIN	District 15	Well Config DEVIATED
KB - GL / MSL (ft...) 15.00	Spud Date 4/17/2011	P & A Date	Well Production Status PR
Comment			SoRT No

Surface Location (Congressional)

Qtr 3 NE	Qtr 4 NW	Section 1	Twnshp 4	Twnsh... N	Range 64	Rng E... W	Actual Latitude (°) 40.34691636	Actual Longitude (°) -104.50090803
-------------	-------------	--------------	-------------	---------------	-------------	---------------	------------------------------------	---------------------------------------

Wellbore Sections

Section Des	Size (in)	Act Top, MD (ftKB)	Act Btm, MD (ftKB)
SURFACE	12 1/4	15	602
PRODUCTION	7 7/8	602	7,007

Casing Strings

Csg Des	Run Date	OD (in)	Wt/Len (lb/ft)	Grade	Top, MD (ftKB)	MD (ftKB)
Surface	4/18/2011	8 5/8	24.00	J-55	15.0	594.0
Production	4/21/2011	4 1/2	11.60	M-80	14.9	6,997.0

Cement

Des	Start Date	Top (ftKB)	Btm (ftKB)
Surface Casing Cement	4/18/2011	15.0	594.0
Production Casing Cement	4/21/2011	1,648.0	6,997.0

Zone Statuses

Zone Name	Status Date	Status	Fluid Type	Job	Prod Method
CODELL	7/15/2011	PR		DRILLING/COMPLETION - ORIGINAL, 4/17/2011...	
NIOBRARA	7/15/2011	PR		DRILLING/COMPLETION - ORIGINAL, 4/17/2011...	

Perforation Data

Linked Zone	Bnch/Stg	Entered Shot Total	Top (ftKB)	Btm (ftKB)	Date
NIOBRARA, ORIGINAL HOLE	A	24	6,503.00	6,515.00	5/31/2011
NIOBRARA, ORIGINAL HOLE	B	24	6,597.00	6,609.00	5/31/2011
CODELL, ORIGINAL HOLE		32	6,787.00	6,795.00	5/5/2011

Stimulation Intervals

Zone	Start Date	Top (ftKB)	Btm (ftKB)
NIOBRARA, ORIGINAL HOLE	5/31/2011	6,503.0	6,609.0
CODELL, ORIGINAL HOLE	5/31/2011	6,787.0	6,795.0

Other In Hole

Run Date	Des	Make	OD (in)	Top (ftKB)	Btm (ftKB)

Logs

Date	Type	Top, MD (ftKB)	Btm, MD (ftKB)
4/21/2011	Caliper/Comp. Density/Neutron/GR/SP/ML	2,550.0	6,989.0
4/21/2011	DIL/GR/SP/Caliper	594.0	7,009.0
5/4/2011	CBL/CCL/GR	1,030.0	6,931.0

Plug Back Total Depths

Date	Type	Com	Depth (ftKB)
5/4/2011	CEMENT PLUG	DEPTH LOGGER ON CBL	6,932.0
10/20/2011	PLUG REMNANTS		6,946.0