

# NL McCullough

BOND CEMENT AND/OR SONIC SEISMOGRAM LOG

Gamma Ray, CCL

FILING NO.

COMPA

WELL

FIELD

COUNT

LOCAT

522

SEC.

Code 11  
Repetitions  
Marked.

3/1/05

*Ma*

IER SERVICES

PERMANENT DATUM

GL

ELEV.

LOG MEASURED FROM

KB

13' AGL

DRILLING MEASURED FROM

KB

ELEVATIONS:

KB 4665

DF 4664

GL 4652

DATE

6-12-89

RUN NO.

one

TYPE LOG

CBL, GR, CCL

DEPTH-DRILLER

7035

DEPTH-LOGGER

6941

BOTTOM LOGGED INTERVAL

6937

TOP LOGGED INTERVAL

6000

TYPE FLUID IN HOLE

H<sub>2</sub>O

SALINITY PPM CL.

DENSITY LB./GAL.

LEVEL

Full

MAX. REC. TEMP. DEG. F.

213

OPR. RIG TIME

2 hrs.

RECORDED BY

Otterholt

WITNESSED BY

Hammond

RUN

BORE HOLE RECORD

CASING RECORD

THIS HEADING AND LOG CONFORMS TO API RECOMMENDED STANDARD PRACTICE RP 33

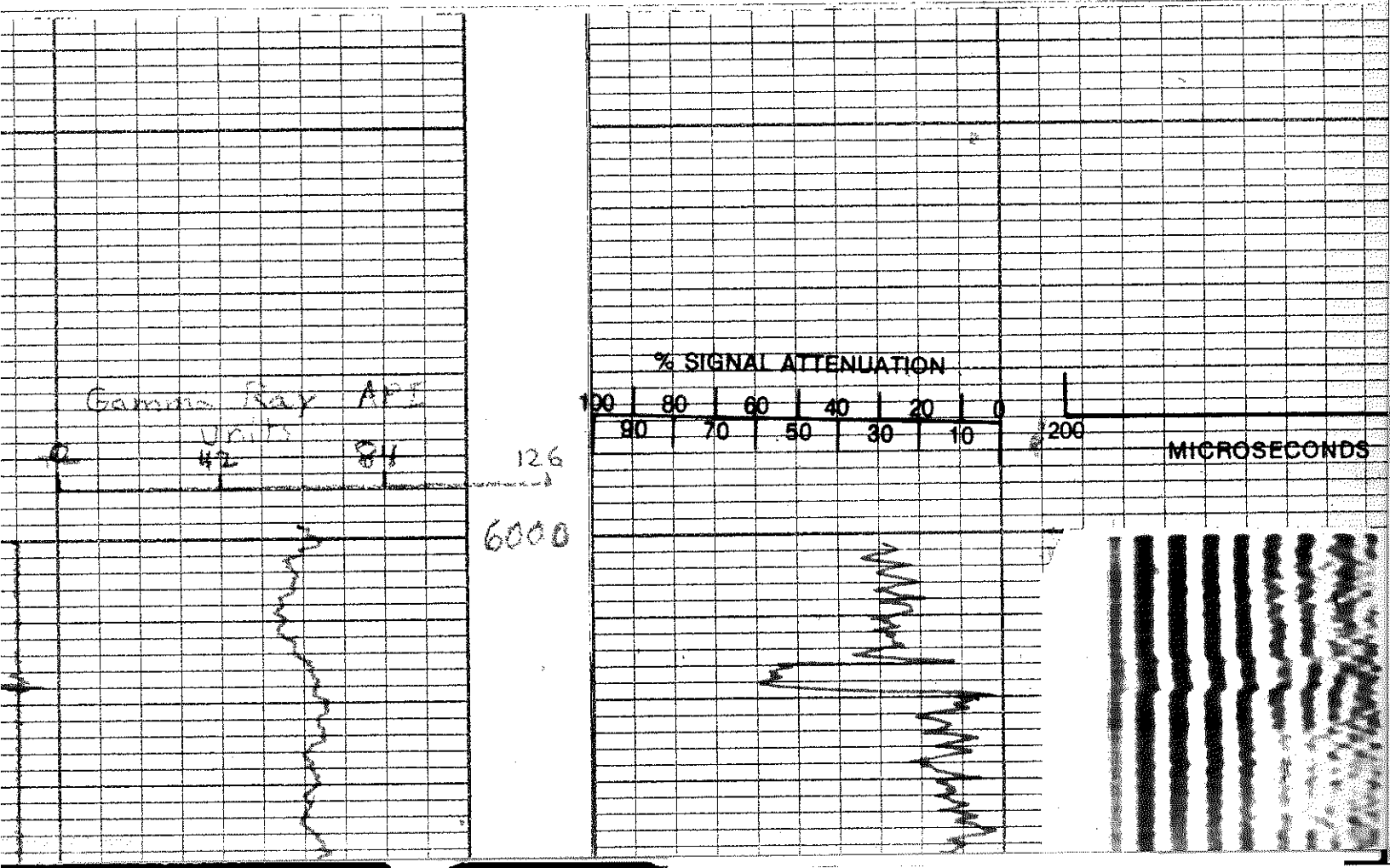
LOGGING AND EQUIPMENT DATA (BOND CEMENT LOG)					
DATE RECORDED	6-13-59		TOOL MODEL NO.	5568	
TIME STARTED			DIAMETER	2"	
TIME FINISHED			LENGTH	16'	
LOGGED INTERVAL					
LOGGED CEMENT TOP	6190				

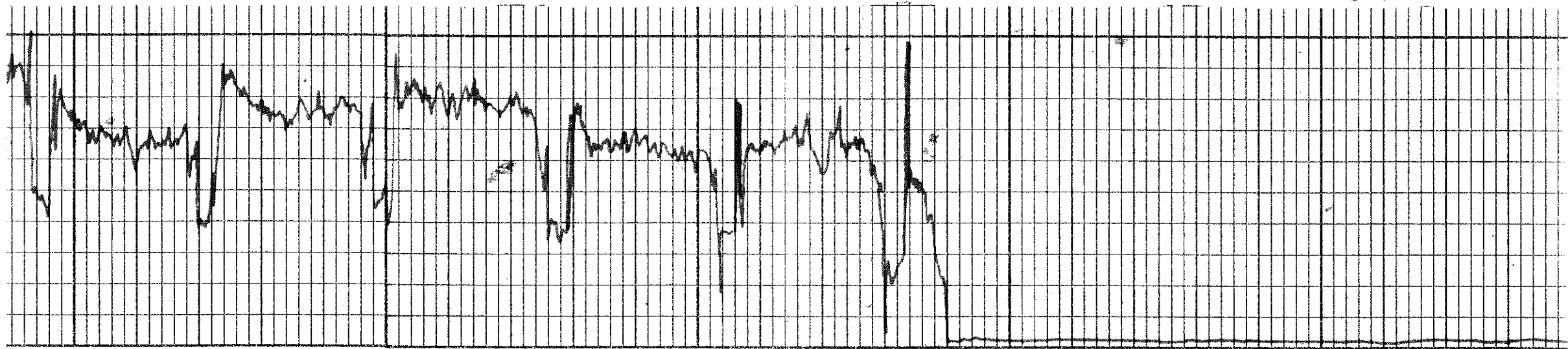
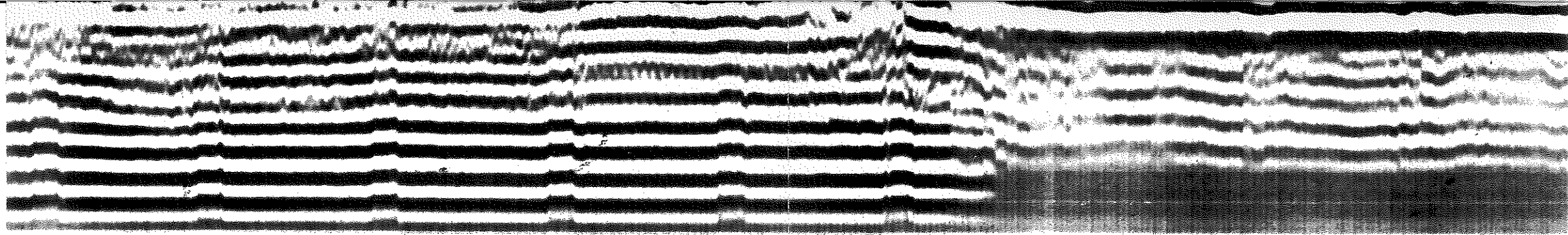
CEMENTING DATA					
	1	2	SQUEEZE NO. 1	SQUEEZE NO. 2	SQUEEZE NO. 3
DATE AND HOUR SET					
SETTING TIME (HRS.)					
TYPE CEMENT					
PACKS USED					
RECEDING FLUID					
% ADDITIVE					
% RETARDER					
CURRY WEIGHT					
BREAKDOWN PRESSURE					
SURFACE MAX. PRESS.					
BOTTOM MAX. PRESS.					

GAMMA RAY				NEUTRON			
RUN NO.	012			RUN NO.			
TOOL MODEL NO.	5568			LOG TYPE			
DIAM.	1 3/4			TOOL MODEL NO.			
DETECT. MODEL NO.				DIAM.			
TYPE				DETECT. MODEL NO.			
LENGTH				TYPE			
DIST. TO N. SOURCE				LENGTH			
				SOURCE MODEL NO.			
				SERIAL NO.			
				SPACING			
				TYPE			
				STRENGTH			
GENERAL							
MOIST TRUCK NO.	84029						
DIST. TRUCK NO.	84029						
TOOL SERIAL NO.							
LOG TICKET NO.							

GENERAL				GAMMA RAY				NEUTRON					
RUN NO.	DEPTHS		SPEED	T. C.	SENS.		ZERO	T. C.		SENS.		ZERO	API N. UN.
	FROM	TO	FT. / MIN	SEC	SETTINGS		DIV. L. OR R	API GR. UNITS	SEC	SETTINGS		DIV. L. OR R	PER LOG DIV
126	6937	6000	30	6	R2X1								

REMARKS: Adjusted depths 9' downhole to equal openhole logs

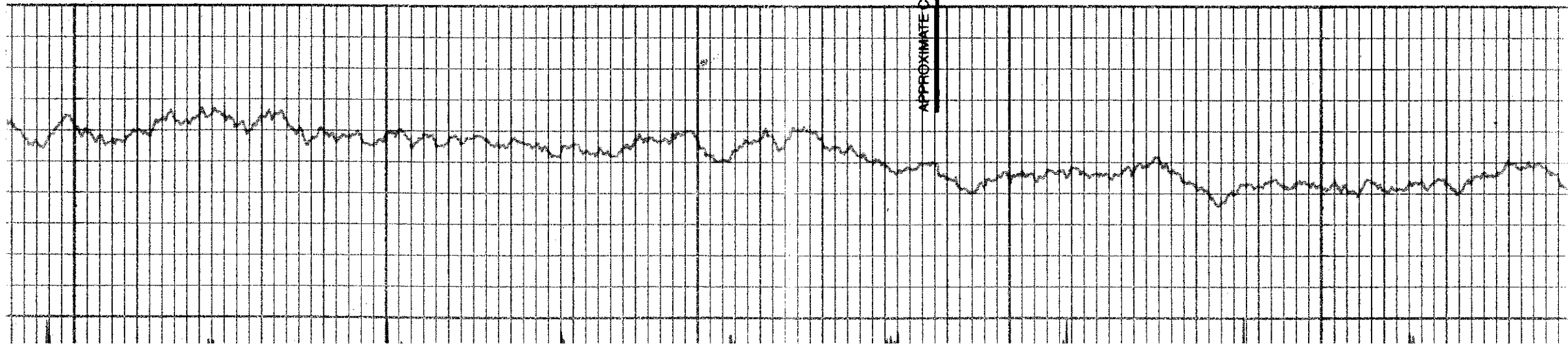


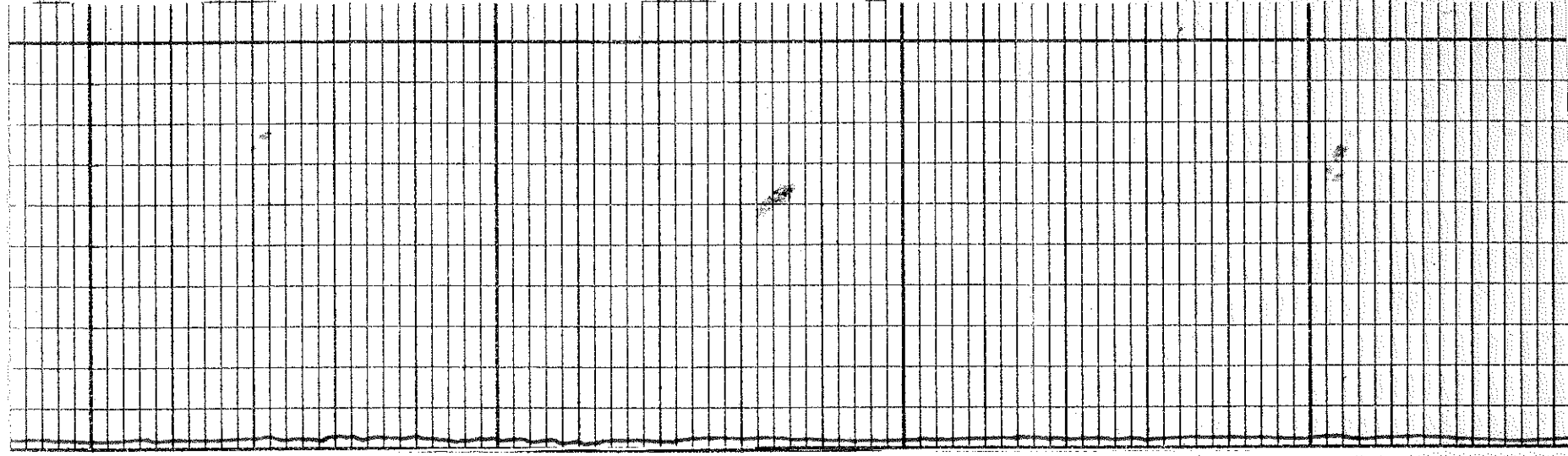
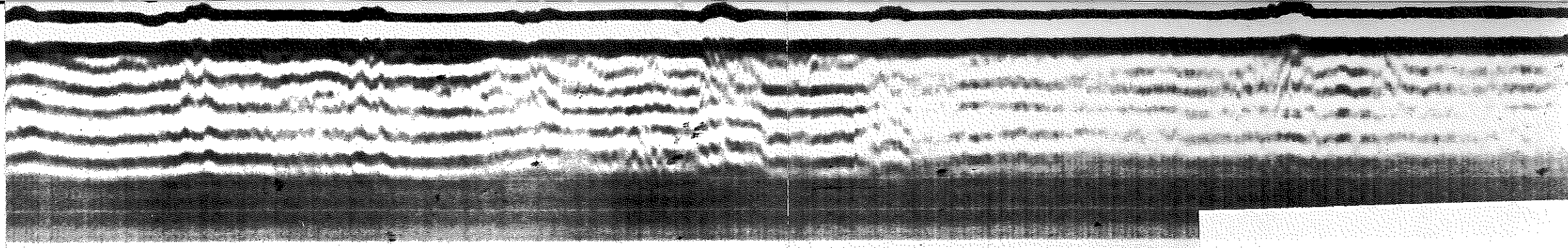


6100

APPROXIMATE CEMENT TOP

6200





6300

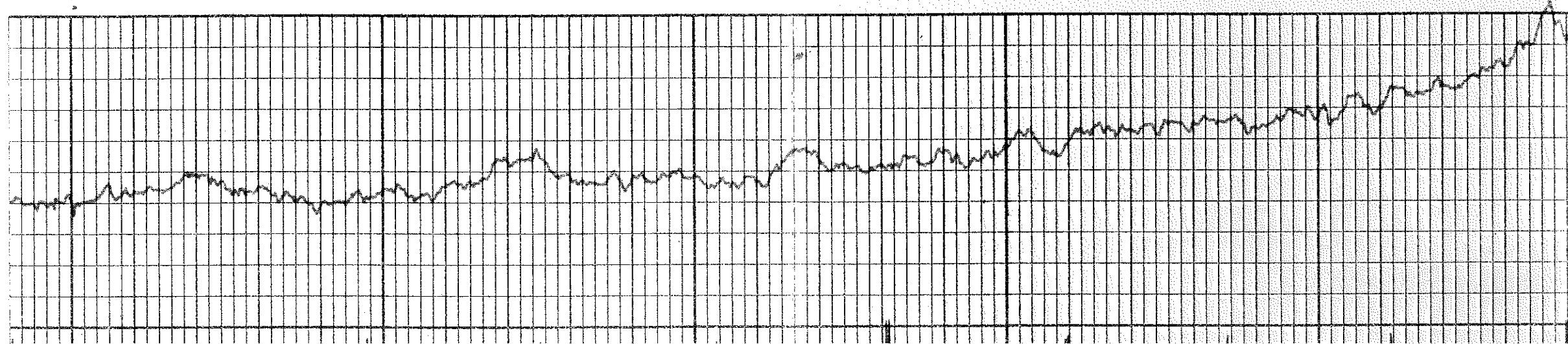
6400

6500

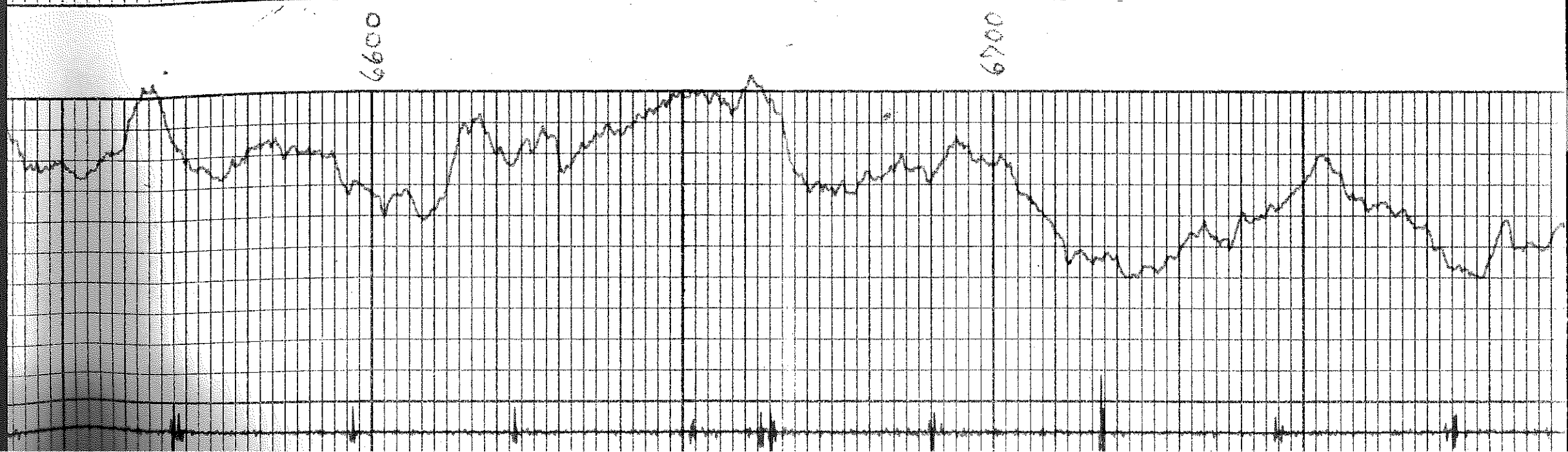
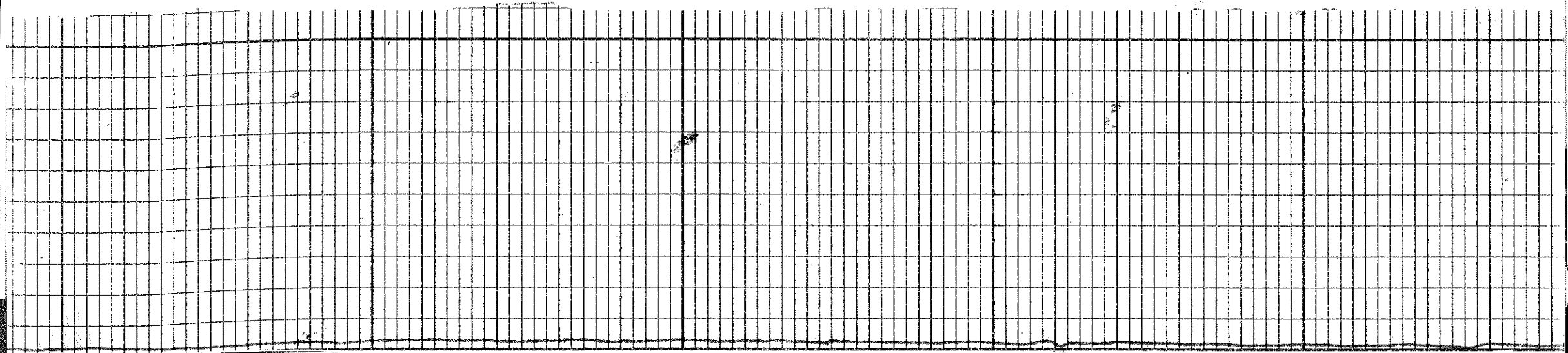
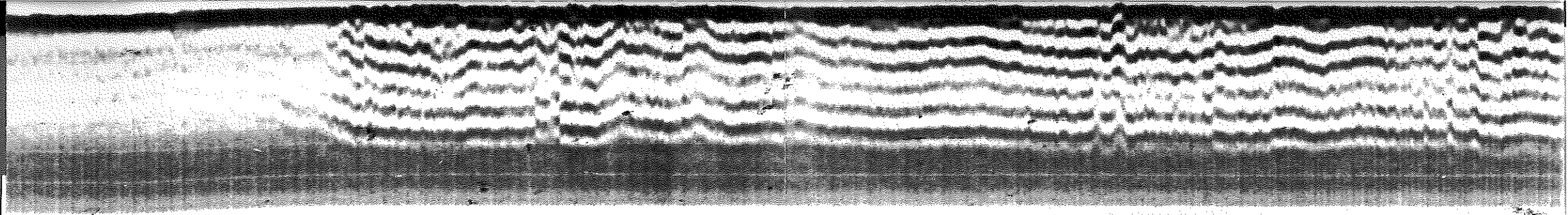
← Set Frac packer @ 6500'

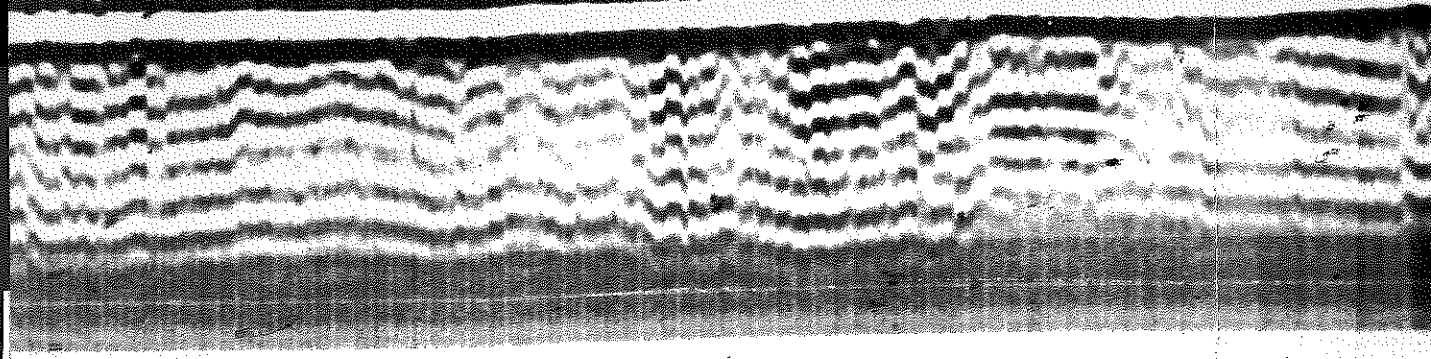
No Collars

1/1



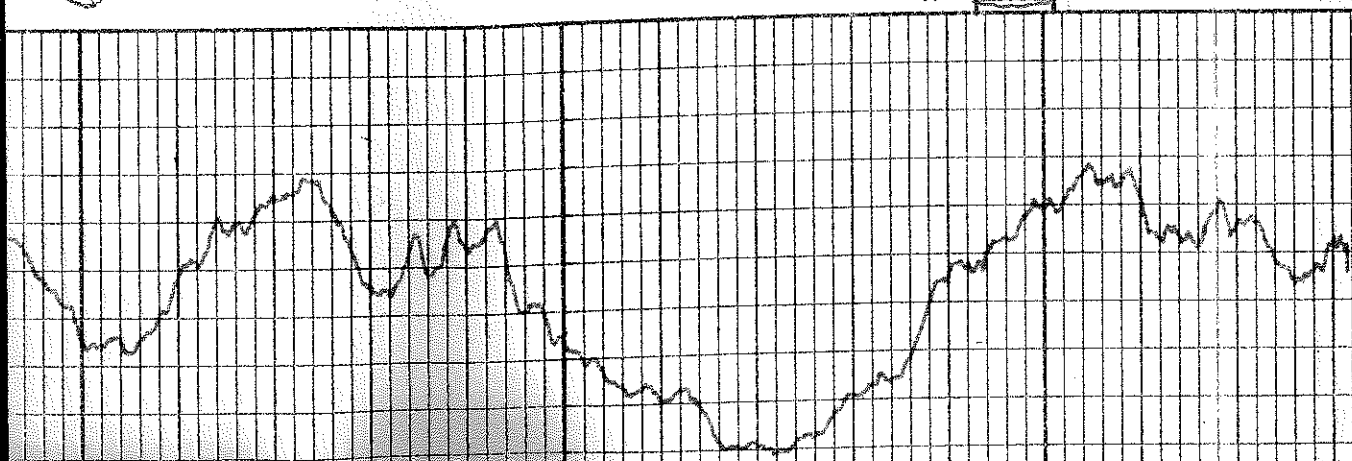




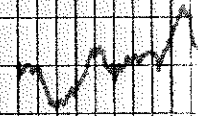


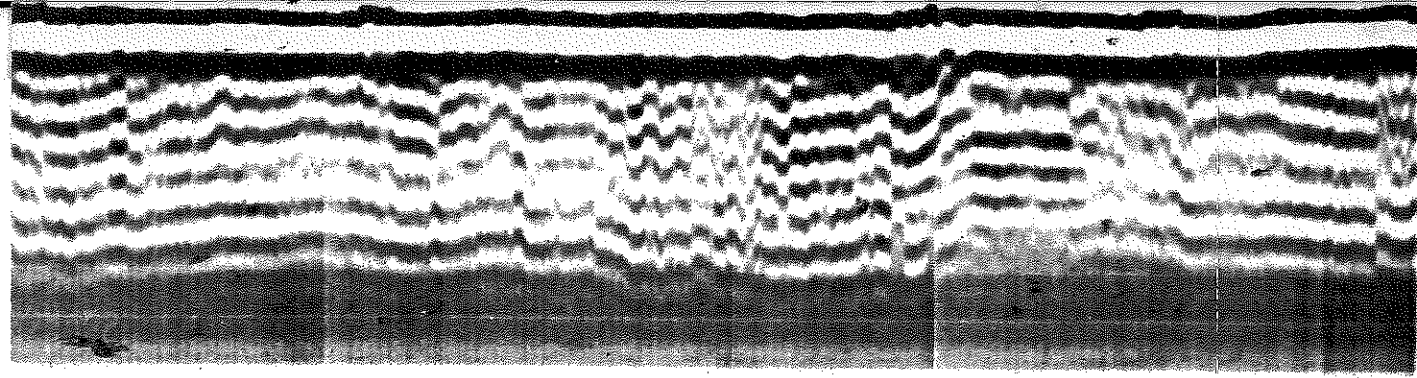
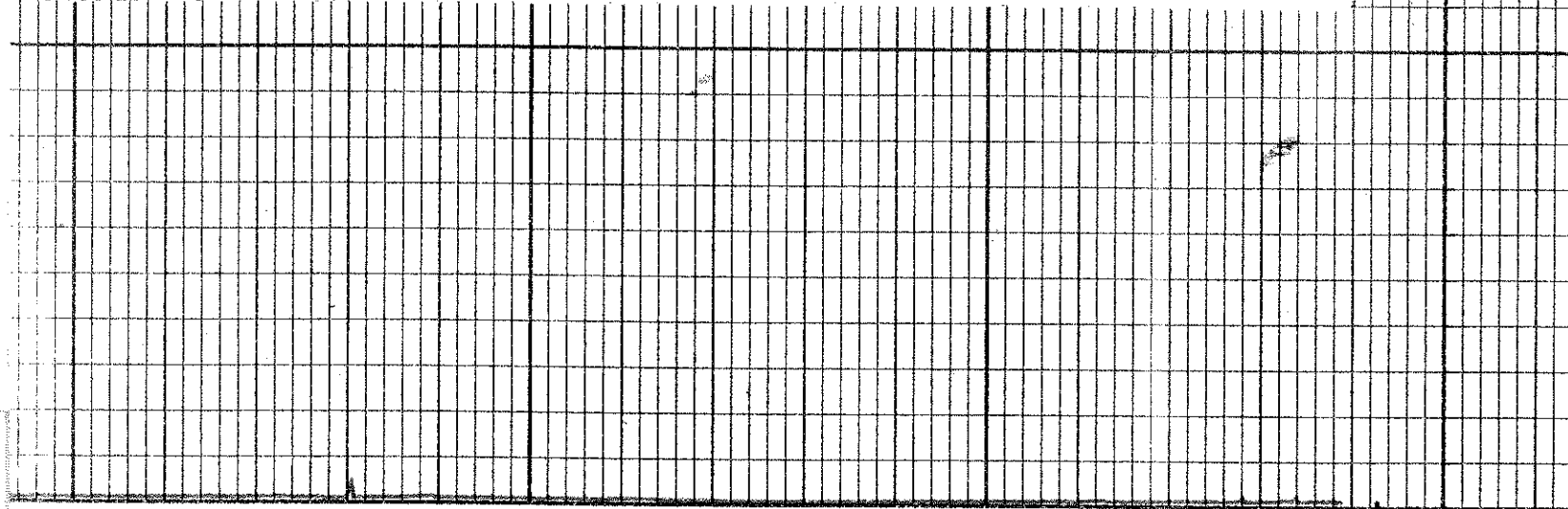
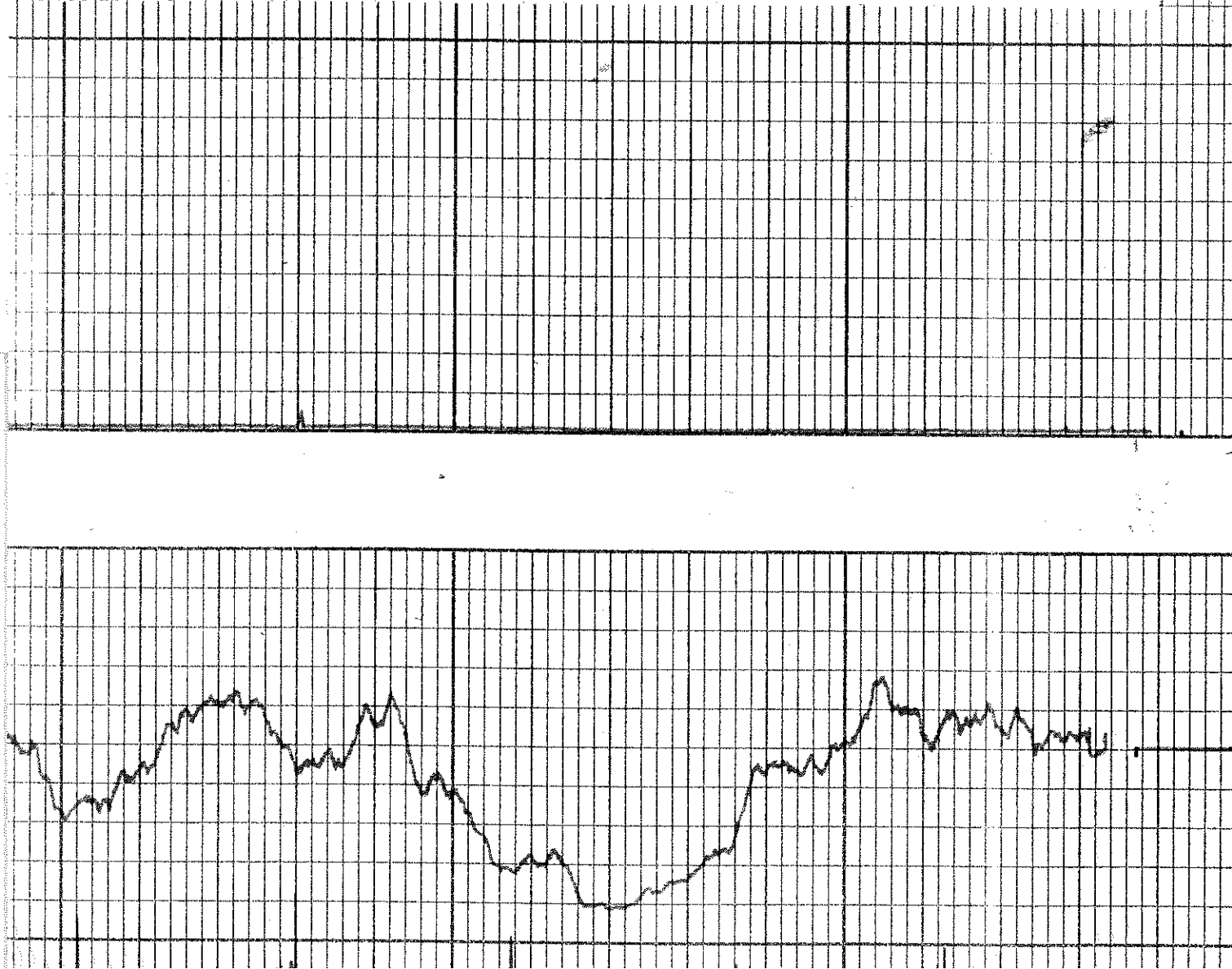
6800

Report  
New  
Cable  
shots  
6893'  
(3 spc)  
6900  
1901'



REPEAT





Gate @ 6036  
0-1100 MSec

Free pipe @ 6036  
200-1200 MSec

