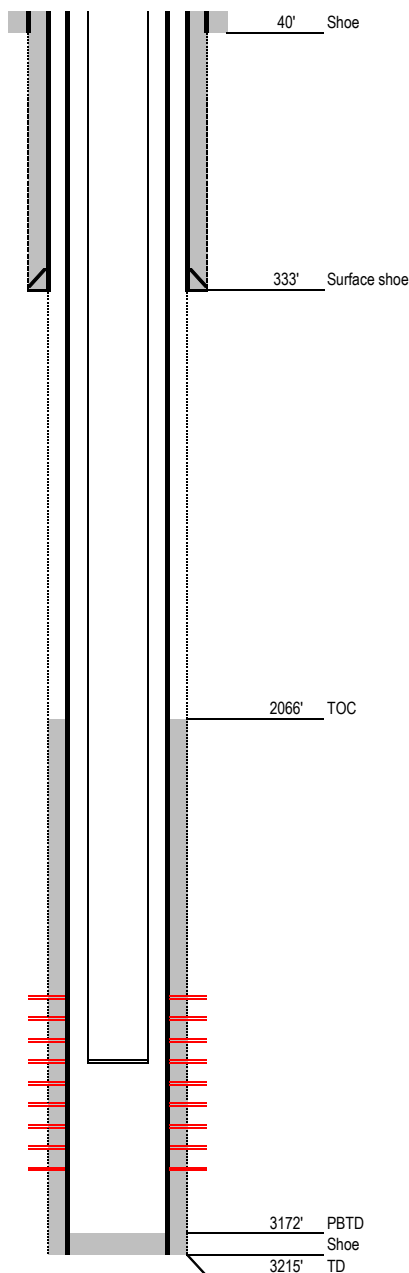


Not to Scale

FEDERAL WELL: YES ☒ NO ☐

Geological Tops	Depth (MD)
Rollins	2376"
Cozzette	2602'
Corcoran	2794'
Sego	2944'
Mancos	3102'



Well Name	Horseshoe Canyon 3		
API	05-077-08232-00		
Surface Location	SWSW S28, T9S, R97W		
GPS Coordinates	39.239161	-108.230346	
Bottom Hole Loc	660 FSL & 652 FWL SEC 28 T9S R97W		
Field	Shire Gulch	# 77450	
County, State	Mesa, CO	# 077	
Spud Date			
Completion Date	5/19/1980		
Diagram Date	9/8/2021		
KB Elevation	5616'		
KB	10'		
GL Elevation	5606'		

Hole	-
Conductor	16" .25" wall @ 40'
Cement	Surface

Surface Hole	12.25" @ 333'
Casing	8-5/8" 24 ppf J55 STC @ 333'
Cement	200sx Class G w/ 3% CaCl
TOC	Surface

Production Hole	7.875" @ 3215'
Casing	4-1/2" 10.5 ppf K55 LTC @ 3215'
Cement	300sx Class G w/ 2% CaCl
TOC	2066' per Gearhart-Owen CBL dated 4/8/80

Tubing	2 3/8" 4.7 ppf J55 EUE @ 2821'
--------	--------------------------------

Perforations	Top	Bottom
	2624'	2862'

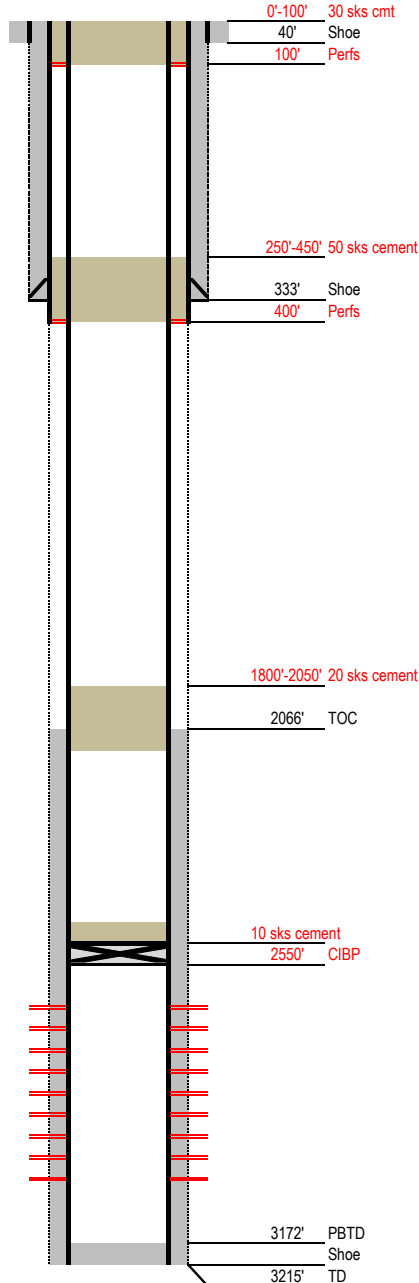
Laramie Energy

Proposed P&A Wellbore Diagram

Not to Scale

FEDERAL WELL: YES ☒ NO ☐

Geological Tops	Depth (MD)
Rollins	2376'
Cozzette	2602'
Corcoran	2794'
Sego	2944'
Mancos	3102'



Well Name Horseshoe Canyon 3
API 05-077-08232-00
Surface Location SWSW S28, T9S, R97W
GPS Coordinates 39.239161 -108.230346
Bottom Hole Loc 660 FSL & 652 FWL SEC 28 T9S R97W
Field Shire Gulch # 77450
County, State Mesa, CO # 077
Spud Date
Completion Date 5/19/1980
Diagram Date 9/8/2021
KB Elevation 5616'
KB 10'
GL Elevation 5606'

Hole -
Conductor 16" .25" wall @ 40'
Cement Surface

Surface Hole 12.25" @ 333'
Casing 8-5/8" 24 ppf J55 STC @ 333'
Cement 200sx Class G w/ 3% CaCl
TOC Surface

Production Hole 7.875" @ 3215'
Casing 4-1/2" 10.5 ppf K55 LTC @ 3215'
Cement 300sx Class G w/ 2% CaCl
TOC 2066' per Gearhart-Owen CBL dated 4/8/80

Tubing 2 3/8" 4.7 ppf J55 EUE @ 2821'

Perforations	Top	Bottom
	2624'	2862'