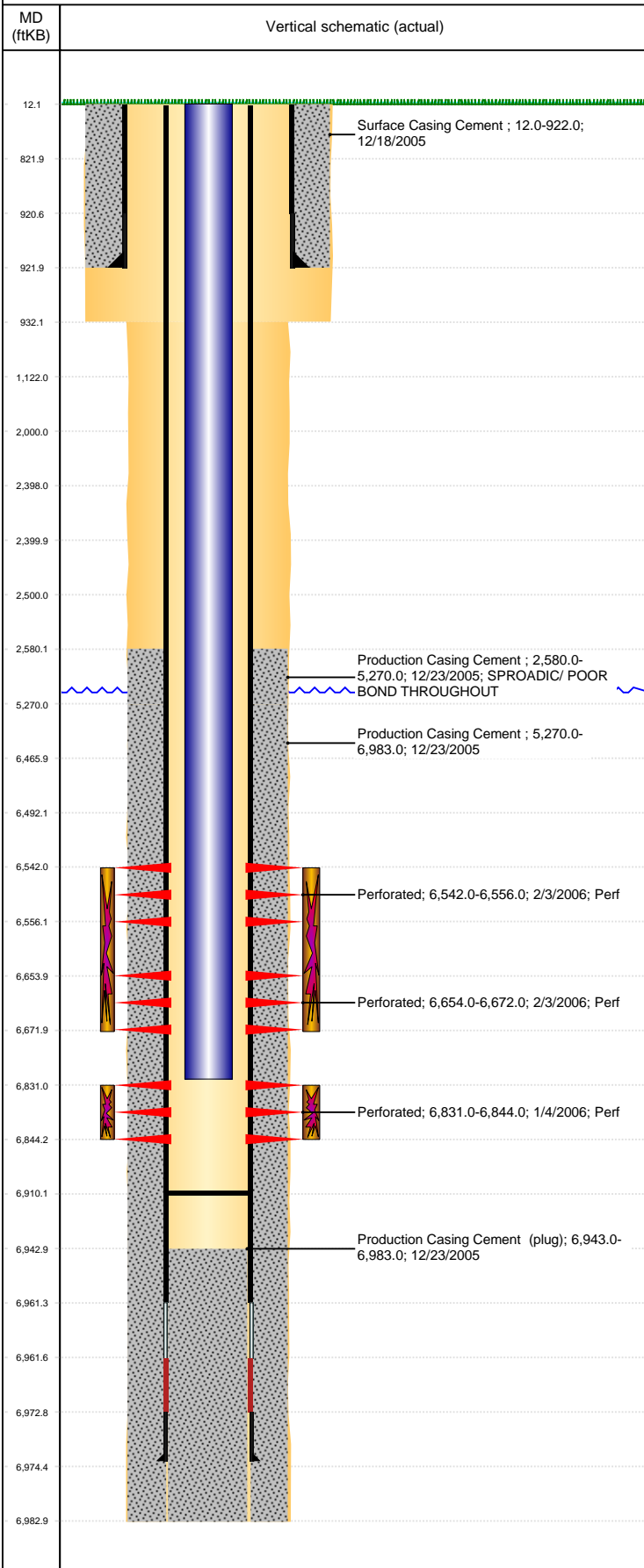


**Well Name: CARPIO A26-05**

VERTICAL, ORIGINAL HOLE, 9/23/2021 9:27:13 AM



Well Header					
API 05-123-22849		Business Unit DJ BASIN		District 15	Well Config VERTICAL
KB - GL / MSL (ft... 12.00	Spud Date 12/17/2005	P & A Date		Well Production Status PR	SoRT No
Comment					

## Surface Location (Congressional)

Qtr 3 SW	Qtr 4 NW	Section 26	Twnshp 6	Twnsh... N	Range 64	Rng E... W	Actual Latitude (°) 40.45872593	Actual Longitude (°) -104.52427681
-------------	-------------	---------------	-------------	---------------	-------------	---------------	------------------------------------	---------------------------------------

## Wellbore Sections

Section Des	Size (in)	Act Top, MD (ftKB)	Act Btm, MD (ftKB)
SURFACE	12 1/4	12	932
PRODUCTION	7 7/8	932	6,983

## Casing Strings

Csg Des	Run Date	OD (in)	Wt/Len (lb/ft)	Grade	Top, MD (ftKB)	MD (ftKB)
Surface	12/18/2005	8 5/8	24.00	J-55	12.0	922.0
Production	12/23/2005	4 1/2	11.60	M-80	12.0	6,974.3

## Cement

Des	Start Date	Top (ftKB)	Btm (ftKB)
Surface Casing Cement	12/18/2005	12.0	922.0
Production Casing Cement	12/23/2005	2,580.0	5,270.0
Production Casing Cement	12/23/2005	5,270.0	6,983.0

## Zone Statuses

Zone Name	Status Date	Status	Fluid Type	Job	Prod Method
NIOBRARA	2/5/2006	PR		DRILLING/COMPLETION - ORIGINAL, 12/17/200...	
CODELL	2/5/2006	PR		DRILLING/COMPLETION - ORIGINAL, 12/17/200...	

## Perforation Data

Linked Zone	Bnch/Stg	Entered Shot Total	Top (ftKB)	Btm (ftKB)	Date
NIOBRARA, ORIGINAL HOLE	A	84	6,542.00	6,556.00	2/3/2006
NIOBRARA, ORIGINAL HOLE	B	108	6,654.00	6,672.00	2/3/2006
CODELL, ORIGINAL HOLE		52	6,831.00	6,844.00	1/4/2006

## Stimulation Intervals

Zone	Start Date	Top (ftKB)	Btm (ftKB)
NIOBRARA, ORIGINAL HOLE	2/3/2006	6,542.0	6,672.0
CODELL, ORIGINAL HOLE	2/3/2006	6,831.0	6,844.0

## Other In Hole

Run Date	Des	Make	OD (in)	Top (ftKB)	Btm (ftKB)

## Logs

Date	Type	Top, MD (ftKB)	Btm, MD (ftKB)
12/22/2005	COMPENSATED DENSITY	3,490.0	6,963.0
12/22/2005	INDUCTION	922.0	6,983.0
1/4/2006	CBL/CCL/GR	2,445.0	5,150.0
1/4/2006	CBL/CCL/GR	5,150.0	6,941.0
3/24/2014	GYRO	12.0	6,700.0

## Plug Back Total Depths

Date	Type	Com	Depth (ftKB)
1/4/2006	FILL	DEPTH LOGGER FROM CBL	6,943.0
3/15/2006	FILL	DRILL CBP AND PUSH TO 6910'	6,910.0