



Terra Energy Partners, LLC

LONG STRING POST JOB REPORT

RG 344-7-297 05-103-12463
S:18 T:2S R:97W Rio Blanco CO

CallSheet #: 77216
Proposal #: 53249



LONG STRING Post Job Report

Attention: Mr. Lynn Cass | (970) 263-2716 | lcass@terraep.com
Terra Energy Partners, LLC
4828 Loop Central Dr., Suite 900 | Houston, TX 77081

Dear Mr. Lynn Cass,

Thank you for the opportunity to provide cementing services on this well. American Cementing strives to achieve complete customer satisfaction. If you have any questions regarding the services or data provided, please contact American Cementing at any time.

Sincerely,

Zen Keith

Field Engineer | (307) 757-7178 | zen.keith@americancementing.com

Field Office 28730 US-6, Rifle, CO 81650
Phone: (970) 657-1157

Job Details & Summary

Geometry

Type	Function	OD (in)	ID (in)	Weight (lb/ft)	Thread	Top (ft)	Bottom (ft)	Excess (%)
Casing	Outer	9.625	8.921	36	n/a	0	3317	0
Open Hole	Outer	n/a	8.75	n/a	n/a	3281	12199	45
Casing	Inner	4.5	4	11.6	LTC	0	12195	0

Equipment / People

Unit Type	Unit	Power Unit	Employee #1	Employee #2
Silo	FSS(CTS)-438			
Silo	FSS(CTS)-470			
Cement Trailer	CTF-286	TRC(TRB)-425	Manuel Silva	
Cement Trailer	CTF-161	TRC(TRB)-424	Doyle, Sheldon	
Light Duty Vehicles	LDV-061		Diaz, Douglas	Chambers, Andrew
Cement Pump Float	CPF-011	TRH-1137	Aden, Mark	

Timing

Event	Date/Time
Call Out	6/12/2021 23:30
Depart Facility	6/13/2021 01:03
On Location	6/13/2021 02:08
Rig Up Iron	6/13/2021 02:20
Job Started	6/13/2021 04:26
Job Completed	6/13/2021 06:48
Rig Down Iron	6/13/2021 06:48
Depart Location	6/13/2021 07:50

General Job Information

Metrics	Value
Well Fluid Density	9.9 lb/gal
Well Fluid Type	WBM
Rig Circulation Vol	630 bbls
Rig Circulation Time	1 hours
Calculated Displacement	189 bbls
Actual Displacement	189 bbls
Total Spacer to Surface	0 bbls
Total CMT to Surface	0 bbls
Well Topped Out	N/A

Job Details

Metrics	Value
Flare Prior to Job	No
Flare During Job	No
Flare at End of Job	No
Well Full Prior to Job	Yes
Well Fluid Density Into Well	9.9 lb/gal
Well Fluid Density Out of Well	9.9 lb/gal

Job Details (cont.)

Metrics	Value
BHCT	191 °F
BHST	249 °F

Water Analysis

Metrics	Value	Recommended
Water Source	Frac Tanks	
Temperature	71 °F	50-80 °F
pH Level	7	5.5-8.5
Chlorides	0 mg/L	0-3000 mg/L
Total Alkalinity	240	0-1000
Total Hardness	425 mg/L	0-500 mg/L
Carbonates	0 mg/L	0-100 mg/L
Sulfates	<200 mg/L	0-1500 mg/L
Potassium	0 mg/L	0-3000 mg/L
Iron	0 mg/L	0-300 mg/L

Circulation

Lost Circulation Experienced
No

Job Execution Information

Fluid	Product	Function	Density (lb/gal)	Yield (ft ³ /sk)	Water Rq. (gal/sk)	Water Rq. (gal/bbl)	Volume (sks)	Volume (bbl)	Designed Top (ft)
1	Water	Flush	8.34			42.00		100.00	0
2	Scav Cement	Scavenger	11.00	3.07	18.83		366.00	200.36	748
3	Lead Cement	Lead	12.70	2.00	10.97		246.00	87.59	4270
4	Tail Cement	Tail	13.50	1.85	8.97		1035.00	340.16	5879
5	Displacement	DisplacementFinal	8.34			42.00		189.00	0

Job Fluid Details

Fluid	Type	Fluid	Product	Function	Conc.	Uom
2	Scavenger	Scav Cement	ASTM TYPE III	Cement	65.00	%
2	Scavenger	Scav Cement	FLY ASH (POZZOLAN)	Extender	35.00	%
2	Scavenger	Scav Cement	BENTONITE	Viscosifier	6.00	%BWOB
2	Scavenger	Scav Cement	FP-24	Defoamer	0.30	%BWOB
2	Scavenger	Scav Cement	GW-86	Viscosifier	0.10	%BWOB
2	Scavenger	Scav Cement	IntegraSeal PHENO	LostCirculation	3.00	lb/sk
2	Scavenger	Scav Cement	R-3	Retarder	0.30	%BWOB
3	Lead	Lead Cement	ASTM TYPE III	Cement	100.00	%
3	Lead	Lead Cement	CD-31	Dispersant	0.10	%BWOB
3	Lead	Lead Cement	FL-66	FluidLoss	0.50	%BWOB
3	Lead	Lead Cement	FP-24	Defoamer	0.30	%BWOB
3	Lead	Lead Cement	GW-86	Viscosifier	0.10	%BWOB
3	Lead	Lead Cement	IntegraSeal PHENO	LostCirculation	3.00	lb/sk
3	Lead	Lead Cement	R-3	Retarder	0.50	%BWOB
4	Tail	Tail Cement	BA-90	BondEnhancer	10.00	%
4	Tail	Tail Cement	CLASS G	Cement	70.00	%
4	Tail	Tail Cement	FLY ASH (POZZOLAN)	Extender	20.00	%
4	Tail	Tail Cement	BENTONITE	Viscosifier	6.00	%BWOB
4	Tail	Tail Cement	FL-24	FluidLoss	0.40	%BWOB
4	Tail	Tail Cement	FP-24	Defoamer	0.30	%BWOB
4	Tail	Tail Cement	IntegraSeal PHENO	LostCirculation	3.00	lb/sk
4	Tail	Tail Cement	R-3	Retarder	0.30	%BWOB
4	Tail	Tail Cement	S-8	StrengthRetrogression	25.00	%BWOB

Job Logs

Line	Event	Date (MM/DD/YY)	Time (HH:MM)	Density (lb/gal)	Pump Rate (bpm)	Pump Volume (bbls)	Pipe Pressure (psi)	Comment
1	Callout	6/12/2021	23:30					Yard call 2330 on location 0230
2	Depart For Location	6/13/2021	01:03					Leave Rifle yard for location
3	Arrive On Location	6/13/2021	02:08					Arrive on location, rig running casing
4	Spot Equipment	6/13/2021	02:08					Spot in all equipment
5	Rig Up Iron	6/13/2021	02:20					Rig in all lines and equipment to stand pipe
6	Waiting	6/13/2021	03:19					Waiting on rig to finish casing and circulate
7	Safety Meeting	6/13/2021	04:09					Pre job safety meeting with company man and rig crew
8	End Circulation	6/13/2021	04:16					Rig ended circulation, circulated 1 hr @ 10.5 BPM total of 630 BBLS
9	Waiting	6/13/2021	04:16					Waiting on rig to lay down CRT
10	Rig Up Iron	6/13/2021	04:20					Rig up cement head and lines on the floor
11	Fill Lines	6/13/2021	04:26	8.34	5	0	737	Pumping fresh water, returns
12	Pressure Test Lines	6/13/2021	04:29				5000	Pressure test lines
13	Pump Spacer	6/13/2021	04:32	8.34	7	10	852	Pumping fresh water spacer
14	Pump Spacer	6/13/2021	04:45	8.34	7	100	1454	Pumping fresh water spacer
15	Pump Scavenger	6/13/2021	04:45	11	7	0	1454	Pumping scavenger, Mix water temp 71 F. Slurry temp 77 F
16	Pump Scavenger	6/13/2021	04:51	11	8	50	1527	Pumping scavenger
17	Pump Scavenger	6/13/2021	04:58	11	8	100	1341	Pumping scavenger
18	Pump Scavenger	6/13/2021	05:04	11	8	150	825	Pumping scavenger
19	Pump Scavenger	6/13/2021	05:12	11	8	200	751	Pumping scavenger
20	Pump Lead Cement	6/13/2021	05:12	12.7	8	0	751	Pumping lead cement, Slurry temp 78 F
21	Pump Lead Cement	6/13/2021	05:18	12.7	8	50	760	Pumping lead cement
22	Pump Lead Cement	6/13/2021	05:22	12.7	7	88	569	Pumping lead cement
23	Pump Tail Cement	6/13/2021	05:22	13.5	7	0	569	Pumping tail cement, slurry temp 78 F
24	Pump Tail Cement	6/13/2021	05:30	13.5	8	50	850	Pumping tail cement
25	Pump Tail Cement	6/13/2021	05:37	13.5	8	100	928	Pumping tail cement
26	Pump Tail Cement	6/13/2021	05:43	13.5	8	150	955	Pumping tail cement
27	Pump Tail Cement	6/13/2021	05:49	13.5	8	200	958	Pumping tail cement
28	Pump Tail Cement	6/13/2021	05:56	13.5	6	250	754	Pumping tail cement
29	Pump Tail Cement	6/13/2021	06:05	13.5	6	300	581	Pumping tail cement
30	Pump Tail Cement	6/13/2021	06:12	13.5	5	341	356	Pumping tail cement
31	Clean Pumps and Lines	6/13/2021	06:12					Wash pump and lines to pit
32	Drop Top Plug	6/13/2021	06:21					Drop top plug verified by company man
33	Pump Displacement	6/13/2021	06:22	8.34	10	0	577	Pumping KCL displacement
34	Pump Displacement	6/13/2021	06:27	8.34	10	50	1209	Pumping KCL displacement
35	Pump Displacement	6/13/2021	06:33	8.34	10	100	1943	Pumping KCL displacement
36	Pump Displacement	6/13/2021	06:38	8.34	10	150	2752	Pumping KCL displacement
37	Pump Displacement	6/13/2021	06:44	8.34	4	189	2380	Pumping KCL displacement
38	Land Plug	6/13/2021	06:44				3467	Land plug, FCP 2380 PSI bumped to 3467 PSI
39	Check Floats	6/13/2021	06:48					Bled pressure, floats held. 2 BBLs bled back
40	Rig Down Iron	6/13/2021	06:48					Rig down all lines and equipment
41	Depart Location	6/13/2021	07:50					Leave location for Rifle shop

Pump Diagrams

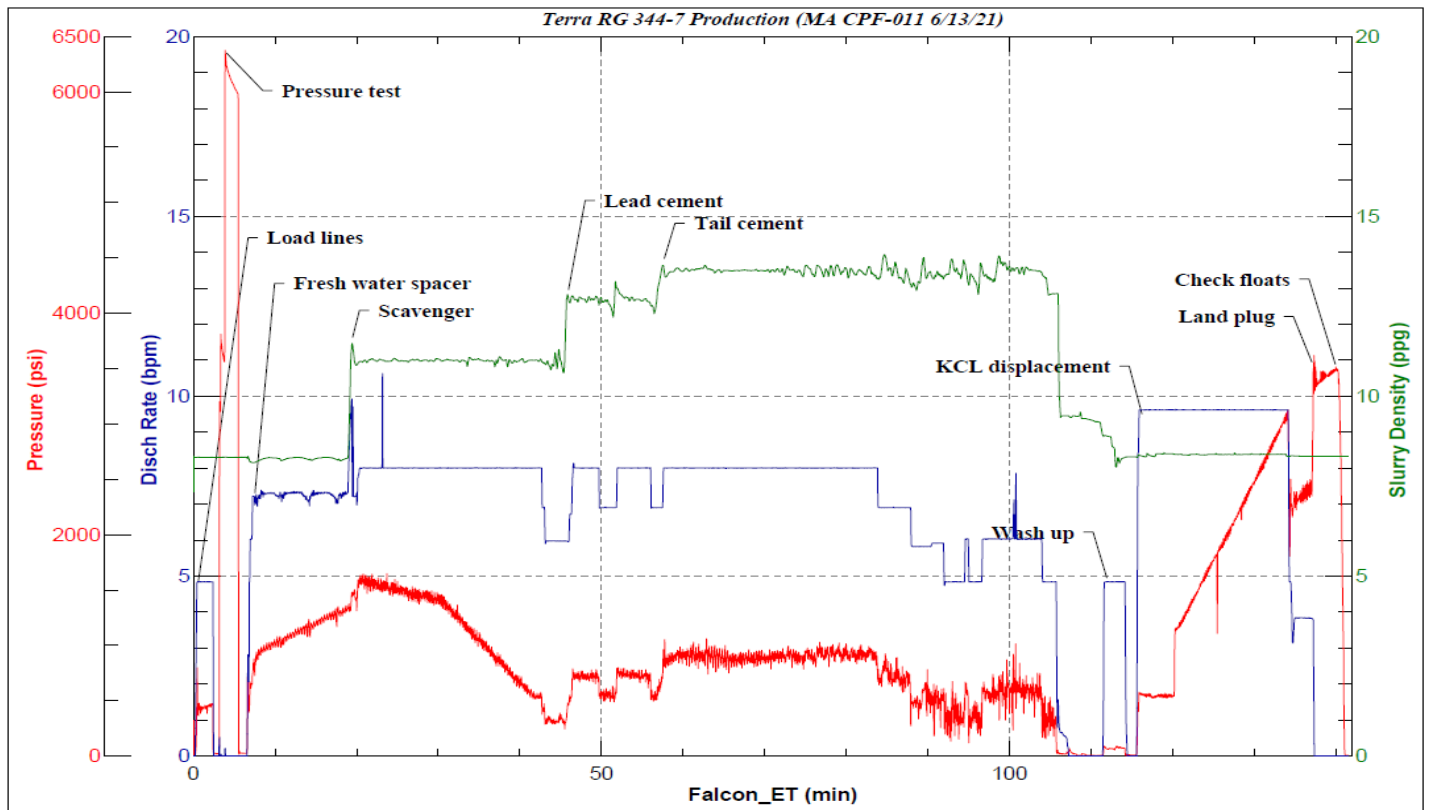


JobMaster Program Version 5.01C1

Job Number: 77216

Customer: Terra

Well Name: RG 344-7



BJ Services

Job Start: Sunday, June 13, 2021