



---

# **Terra Energy Partners, LLC**

## **INTERMEDIATE POST JOB REPORT**

**RG 544-7-297 05-103-12466**  
**S:18 T:2S R:97W Rio Blanco CO**

CallSheet #: 77423  
Proposal #: 53539



**INTERMEDIATE Post Job Report**

**Attention:** Mr. Lynn Cass | (970) 263-2716 | lcass@terraep.com  
Terra Energy Partners, LLC  
4828 Loop Central Dr., Suite 900 | Houston, TX 77081

---

Dear Mr. Lynn Cass,

Thank you for the opportunity to provide cementing services on this well. American Cementing strives to achieve complete customer satisfaction. If you have any questions regarding the services or data provided, please contact American Cementing at any time.

Sincerely,

**Gage Putnam**

Field Engineer | (307) 887-4243 | gage.putnam@americancementing.com

**Field Office**      28730 US-6, Rifle, CO 81650  
Phone: (970) 657-1157

## Job Details & Summary

### Geometry

Type	Function	OD (in)	ID (in)	Weight (lb/ft)	Thread	Top (ft)	Bottom (ft)	Excess (%)
Casing	Outer	13.375	12.615	54.5	n/a	0	1428	0
Open Hole	Outer	n/a	12.25	n/a	n/a	1428	3326	50
Casing	Inner	9.625	8.921	36	LTC	0	3319.53	0

### Equipment / People

Unit Type	Unit	Power Unit	Employee #1
Cement Trailer Float	CTF-340	TRC(TRB)-425	Gonzales, Ivan
Cement Pump Float	CPF-074	TRH-1745	Bryson-Floyd, Maurice
Light Duty Vehicles	LDV-062		Linn, Paul

### Timing

Event	Date/Time
Call Out	7/20/2021 17:05
Depart Facility	7/20/2021 23:01
On Location	7/21/2021 00:36
Rig Up Iron	7/21/2021 00:56
Job Started	7/21/2021 05:05
Job Completed	7/21/2021 06:06
Rig Down Iron	7/21/2021 06:22
Depart Location	7/21/2021 07:16

### General Job Information

Metrics	Value
Well Fluid Density	8.5 lb/gal
Well Fluid Type	WBM
Rig Circulation Vol	450 bbls
Rig Circulation Time	0.75 hours
Calculated Displacement	252.88 bbls
Actual Displacement	253 bbls
Total Spacer to Surface	0 bbls
Total CMT to Surface	0 bbls
Well Topped Out	N/A

### Job Details

Metrics	Value
Flare Prior to Job	No
Flare Prior to Job	0 units
Flare During Job	No
Flare During Job	0 units
Flare at End of Job	No
Flare at End of Job	0 units
Well Full Prior to Job	Yes
Well Fluid Density Into Well	8.5 lb/gal
Well Fluid Density Out of Well	8.5 lb/gal

### Job Details (cont.)

Metrics	Value
BHCT	87 °F
BHST	116 °F

### Water Analysis

Metrics	Value	Recommended
Water Source	Upright Rig Tank	
Temperature	63.3 °F	50-80 °F
pH Level	8	5.5-8.5
Chlorides	480 mg/L	0-3000 mg/L
Total Alkalinity	260	0-1000
Total Hardness	125 mg/L	0-500 mg/L
Carbonates	0 mg/L	0-100 mg/L
Sulfates	330 mg/L	0-1500 mg/L
Potassium	200 mg/L	0-3000 mg/L
Iron	0 mg/L	0-300 mg/L

### Circulation

Lost Circulation Experienced
No

## Job Execution Information

Fluid	Product	Function	Density (lb/gal)	Yield (ft <sup>3</sup> /sk)	Water Rq. (gal/sk)	Water Rq. (gal/bbl)	Volume (sks)	Volume (bbl)	Designed Top (ft)
1	Water	Flush	8.34			42.00		40.00	1828
2	Lead Cement	Lead	12.30	2.36	13.32		100.00	42.07	2306
3	Tail Cement	Tail	12.80	2.10	11.34		121.00	45.19	2806
4	Displacement	DisplacementFinal	8.34			42.00		253.00	0

## Job Fluid Details

Fluid	Type	Fluid	Product	Function	Conc.	Uom
2	Lead	Lead Cement	ASTM TYPE III	Cement	100.00	%
2	Lead	Lead Cement	A-10	Accelerator	5.00	%BWOB
2	Lead	Lead Cement	A-2	Accelerator	2.00	lb/sk
2	Lead	Lead Cement	A-7P	Accelerator	2.00	lb/sk
2	Lead	Lead Cement	FP-24	Defoamer	0.30	%BWOB
2	Lead	Lead Cement	IntegraSeal PHENO	LostCirculation	3.00	lb/sk
2	Lead	Lead Cement	IntegraSeal POLI	LostCirculation	0.25	lb/sk
3	Tail	Tail Cement	ASTM TYPE III	Cement	100.00	%
3	Tail	Tail Cement	A-10	Accelerator	5.00	%BWOB
3	Tail	Tail Cement	A-2	Accelerator	2.00	lb/sk
3	Tail	Tail Cement	A-7P	Accelerator	2.00	lb/sk
3	Tail	Tail Cement	FP-24	Defoamer	0.30	%BWOB
3	Tail	Tail Cement	IntegraSeal PHENO	LostCirculation	3.00	lb/sk
3	Tail	Tail Cement	IntegraSeal POLI	LostCirculation	0.25	lb/sk

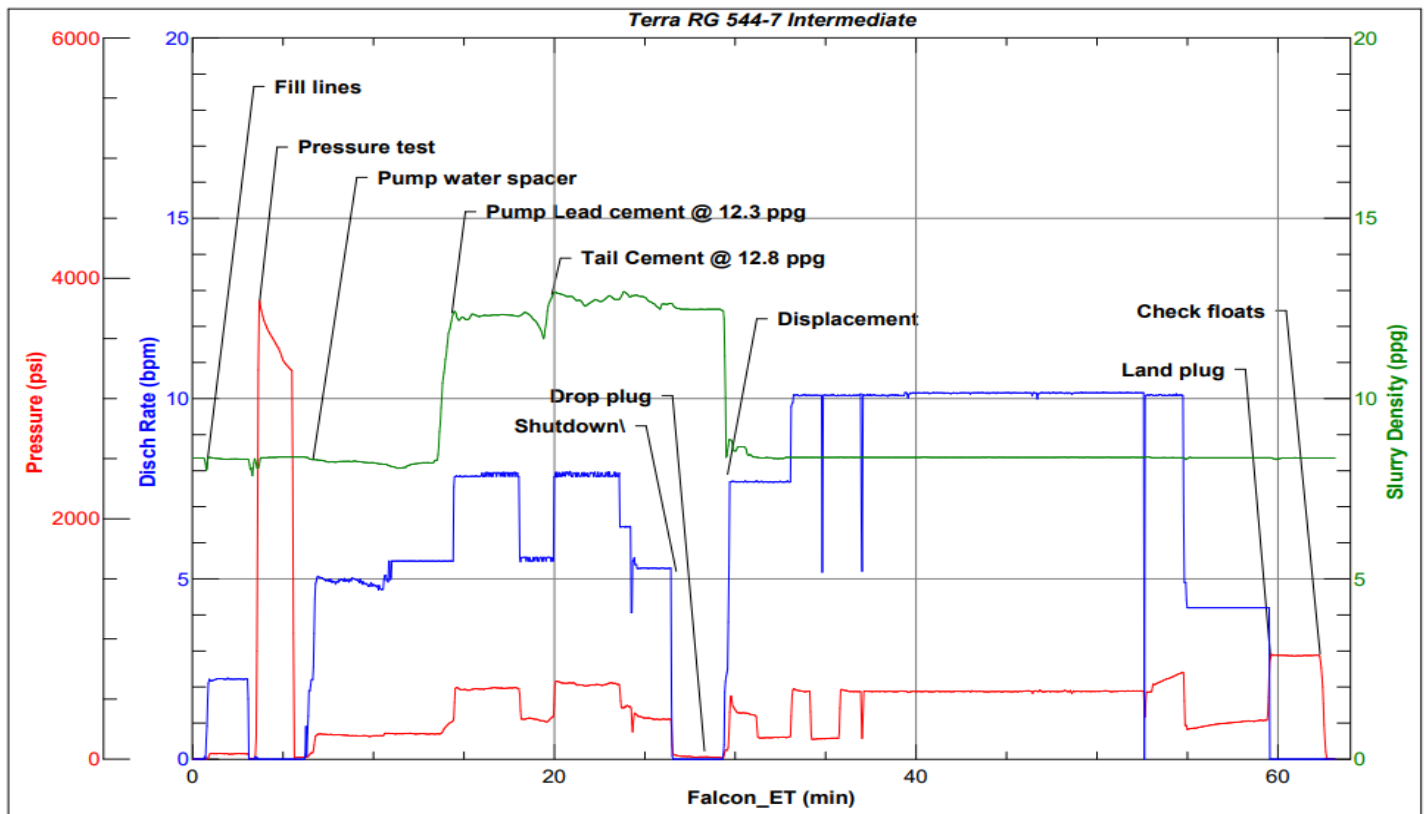
## Job Logs

Line	Event	Date (MM/DD/YY)	Time (HH:MM)	Density (lb/gal)	Pump Rate (bpm)	Pump Volume (bbls)	Pipe Pressure (psi)	Comment
1	Callout	7/20/2021	17:05					Callout, on location of 2:00 7/21/21
2	Safety Meeting	7/20/2021	22:50					Pre-convoy safety meeting
3	Depart Location	7/20/2021	23:01					Depart from Rifle yard for H&P 329
4	Arrive On Location	7/21/2021	00:36					Arrive on location, rig was rigging up casers
5	Safety Meeting	7/21/2021	00:44					Pre-Rig up safety meeting
6	Rig Up Iron	7/21/2021	00:56					Rig up all ground equipment
7	Safety Meeting	7/21/2021	04:40					Pre-Job safety meeting with rig crew, company man, and American Cementing crew
8	Rig Up Iron	7/21/2021	04:56					Load plug in plug container (verified by compnay man), stab plug container, hook up lines
9	Fill Lines	7/21/2021	05:05	8.4	2	5	48	Fill lines
10	Pressure Test Lines	7/21/2021	05:07				3624	Pressure test to 3624 psi
11	Pump Spacer	7/21/2021	05:09	8.4	5.5	40	220	Pump water spacer
12	Pump Lead Cement	7/21/2021	05:19	12.3	8	5	591	Pump Lead Cement @ 12.3 ppg
13	Pump Lead Cement	7/21/2021	05:23	12.3	5.5	42	319	Pump Lead Cement
14	Pump Tail Cement	7/21/2021	05:24	12.8	8	5	648	Pump Tail Cement @ 12.8 ppg
15	Pump Tail Cement	7/21/2021	05:31	12.8	5	49	33	Pump Tail Cement
16	Shutdown	7/21/2021	05:31					Shutdown with 49 bbls of Tail away
17	Drop Top Plug	7/21/2021	05:33					Drop plug, verified by company man
18	Pump Displacement	7/21/2021	05:35	8.4	8	10	436	Pump Displacement
19	Pump Displacement	7/21/2021	05:41	8.4	10	50	563	Pump Displacement
20	Pump Displacement	7/21/2021	05:46	8.4	10	100	564	Pump Displacement
21	Pump Displacement	7/21/2021	05:51	8.4	10	150	565	Pump Displacement
22	Pump Displacement	7/21/2021	05:56	8.4	10	200	565	Pump Displacement
23	Pump Displacement	7/21/2021	05:59	8.4	10	242	708	Pump Displacement
24	Pump Displacement	7/21/2021	06:04	8.4	4	253	325	Pump Displacement
25	Land Plug	7/21/2021	06:04				867	Land the plug @ 325 psi took to 867 psi
26	Check Floats	7/21/2021	06:06					Check floats, floats held 1/2 bbl back
27	Safety Meeting	7/21/2021	06:10					Pre-Rig down safety meeting
28	Rig Down Iron	7/21/2021	06:14					Rig down the rig floor
29	Safety Meeting	7/21/2021	06:18					Pre-Rig down safety meeting
30	Rig Down Iron	7/21/2021	06:22					Rig down all equipment
31	Safety Meeting	7/21/2021	07:08					Pre-convoy safety meeting
32	Depart Location	7/21/2021	07:16					Depart from location for Rifle yard. Thank you for using American Cementing , Andrew Linn, and crew

## Pump Diagrams



JobMaster Program Version 5.01C1  
Job Number: 77423  
Customer: Terra  
Well Name: RG 544-7-297



BJ Services

Job Start: Wednesday, July 21, 2021