



Terra Energy Partners, LLC

INTERMEDIATE POST JOB REPORT

RG 443-7-297 05-103-12464
S:18 T:2S R:97W Rio Blanco CO

CallSheet #: 77307
Proposal #: 53453



INTERMEDIATE Post Job Report

Attention: Mr. Lynn Cass | (970) 263-2716 | lcass@terraep.com
Terra Energy Partners, LLC
4828 Loop Central Dr., Suite 900 | Houston, TX 77081

Dear Mr. Lynn Cass,

Thank you for the opportunity to provide cementing services on this well. American Cementing strives to achieve complete customer satisfaction. If you have any questions regarding the services or data provided, please contact American Cementing at any time.

Sincerely,

Zen Keith

Field Engineer | (307) 757-7178 | zen.keith@americancementing.com

Field Office 28730 US-6, Rifle, CO 81650
Phone: (970) 657-1157

Job Details & Summary

Geometry

Type	Function	OD (in)	ID (in)	Weight (lb/ft)	Thread	Top (ft)	Bottom (ft)	Excess (%)
Casing	Outer	13.375	12.615	54.5	n/a	0	1434	0
Open Hole	Outer	n/a	12.25	n/a	n/a	1499	3452	50
Casing	Inner	9.625	8.921	36	LTC	0	3445	0

Equipment / People

Unit Type	Unit	Power Unit	Employee #1	Employee #2
Cement Trailer	CTF-407	TRB-421	Doyle, Sheldon	
Cement Pump	CPF-136	TRH-887	Woronovitch, Collin	
Light Duty Vehicles	LDV-061		Chambers, Andrew	Fletcher, Christopher

Timing

Event	Date/Time
Call Out	6/24/2021 04:00
Depart Facility	6/24/2021 06:04
On Location	6/24/2021 07:30
Rig Up Iron	6/24/2021 11:00
Job Started	6/24/2021 13:17
Job Completed	6/24/2021 14:30
Rig Down Iron	6/24/2021 14:40
Depart Location	6/24/2021 15:45

General Job Information

Metrics	Value
Well Fluid Density	8.4 lb/gal
Well Fluid Type	WBM
Rig Circulation Vol	400 bbls
Rig Circulation Time	0.4 hours
Calculated Displacement	262 bbls
Actual Displacement	262 bbls
Total Spacer to Surface	0 bbls
Total CMT to Surface	0 bbls
Well Topped Out	No

Job Details

Metrics	Value
Flare Prior to Job	No
Flare During Job	No
Flare at End of Job	No
Well Full Prior to Job	Yes
Well Fluid Density Into Well	8.4 lb/gal
Well Fluid Density Out of Well	8.4 lb/gal

Job Details (cont.)

Metrics	Value
BHCT	87 °F
BHST	116 °F

Water Analysis

Metrics	Value	Recommended
Water Source	Upright Rig Tank	
Temperature	72 °F	50-80 °F
pH Level	7	5.5-8.5
Chlorides	500 mg/L	0-3000 mg/L
Total Alkalinity	250	0-1000
Total Hardness	120 mg/L	0-500 mg/L
Carbonates	12 mg/L	0-100 mg/L
Sulfates	130 mg/L	0-1500 mg/L
Potassium	500 mg/L	0-3000 mg/L
Iron	9 mg/L	0-300 mg/L

Circulation

Lost Circulation Experienced
No

Job Execution Information

Fluid	Product	Function	Density (lb/gal)	Yield (ft ³ /sk)	Water Rq. (gal/sk)	Water Rq. (gal/bbl)	Volume (sks)	Volume (bbl)	Designed Top (ft)
1	Water	Flush	8.34			42.00		40.00	1954
2	Lead Cement	Lead	12.30	2.36	13.32		100.00	42.07	2432
3	Tail Cement	Tail	12.80	2.10	11.34		121.00	45.19	2942
4	Displacement	DisplacementFinal	8.34			42.00		262.00	0

Job Fluid Details

Fluid	Type	Fluid	Product	Function	Conc.	Uom
2	Lead	Lead Cement	ASTM TYPE III	Cement	100.00	%
2	Lead	Lead Cement	A-10	Accelerator	5.00	%BWOB
2	Lead	Lead Cement	A-2	Accelerator	2.00	lb/sk
2	Lead	Lead Cement	A-7P	Accelerator	2.00	lb/sk
2	Lead	Lead Cement	FP-24	Defoamer	0.30	%BWOB
2	Lead	Lead Cement	IntegraSeal PHENO	LostCirculation	3.00	lb/sk
2	Lead	Lead Cement	IntegraSeal POLI	LostCirculation	0.25	lb/sk
3	Tail	Tail Cement	ASTM TYPE III	Cement	100.00	%
3	Tail	Tail Cement	A-10	Accelerator	5.00	%BWOB
3	Tail	Tail Cement	A-2	Accelerator	2.00	lb/sk
3	Tail	Tail Cement	A-7P	Accelerator	2.00	lb/sk
3	Tail	Tail Cement	FP-24	Defoamer	0.30	%BWOB
3	Tail	Tail Cement	IntegraSeal PHENO	LostCirculation	3.00	lb/sk
3	Tail	Tail Cement	IntegraSeal POLI	LostCirculation	0.25	lb/sk

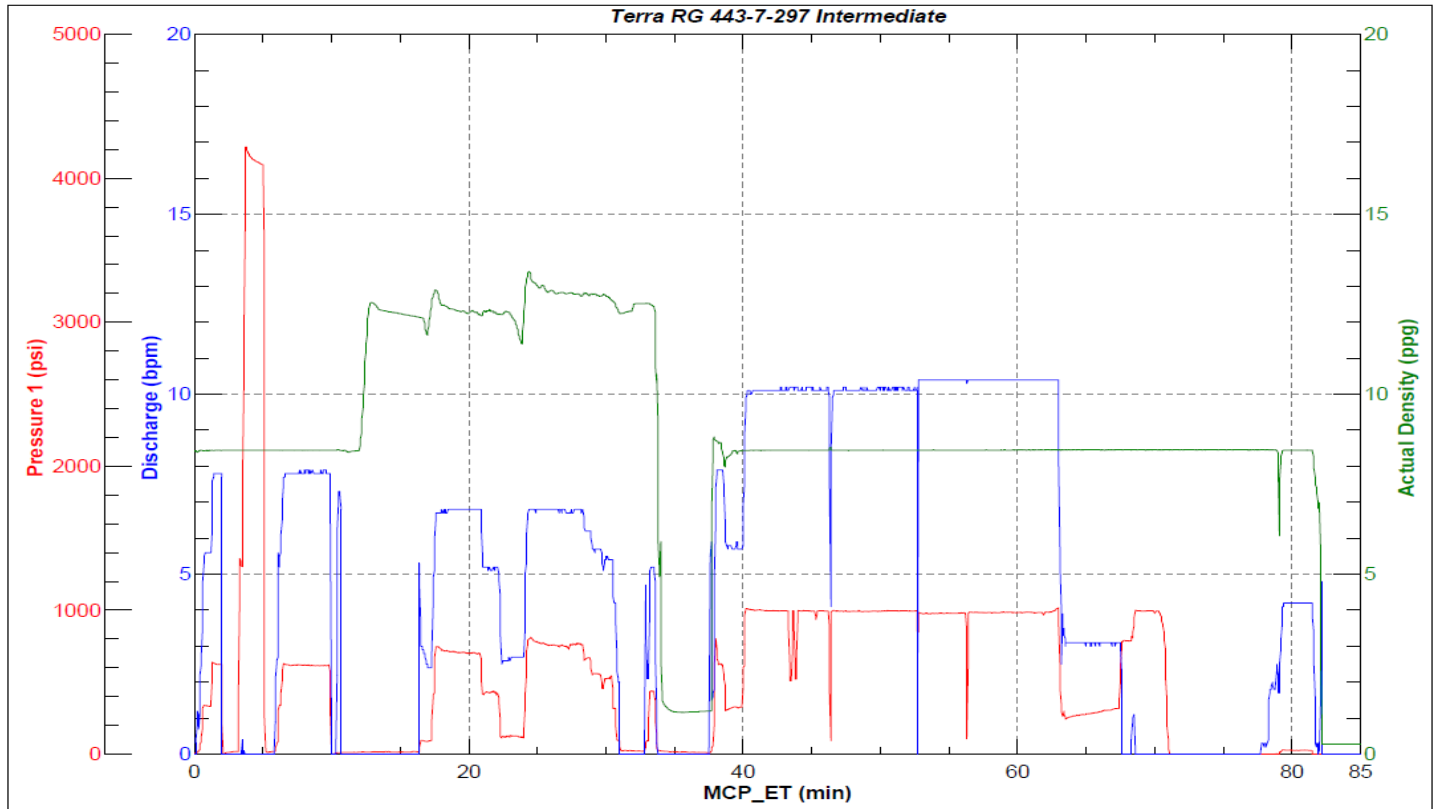
Job Logs

Line	Event	Date (MM/DD/YY)	Time (HH:MM)	Density (lb/gal)	Pump Rate (bpm)	Pump Volume (bbls)	Pipe Pressure (psi)	Comment
1	Callout	6/24/2021	04:00					Crew called out on location @ 10:00 am
2	Depart yard for location	6/24/2021	06:00					Crew leaves yard
3	Arrive on location	6/24/2021	07:30					Met with customer rep discussed job details
4	Spot equipment	6/24/2021	11:20					Spot in equipment
5	Pre rig up Jsa	6/24/2021	11:25					Discussed rig up
6	Rig up location	6/24/2021	11:30					Crew rigs up
7	Pre job	6/24/2021	12:50					Went over job details
8	Fill lines	6/24/2021	13:17	8.33	5	10	345	Filled lines
9	Pressure test	6/24/2021	13:22	8.33	1	1	4000	Tested lines to 4000
10	Water spacer	6/24/2021	13:26	8.33	7.7	30	640	Fresh water spacer
11	Pump Lead Cement	6/24/2021	13:36	12.3	6.7	42.07	630	Pumped lead cement
12	Pump Tail Cement	6/24/2021	13:43	12.8	6.5	45.19	860	Pumped tail cement
13	Shutdown	6/24/2021	13:52					Shutdown/wash up pump
14	Drop plug	6/24/2021	13:56					Dropped top plug
15	Displacement	6/24/2021	13:57	8.33		262	1000	Displace with fresh water
16	Slow rate to land	6/24/2021	14:23	8.33	3	240	290	Slowed to 3/bbl at 240 displaced
17	Land plug	6/24/2021	14:27	8.33	3	262	340-1035	Landed plug at calculated
18	Check floats	6/24/2021	14:30					Floats held 1/bbl back
19	Pre rig down	6/24/2021	14:35					Discussed rig down
20	Rig down location	6/24/2021	14:40					Crew rigs down location
21	Rig down complete	6/24/2021	15:30					Crew completes rig down
22	Crew departs location	6/24/2021	15:45					Crew departs for yard

Pump Diagrams



JobMaster Program Version 5.01C1
Job Number: 77307
Customer: Terra Energy Partners LLC
Well Name: RG 443-7-297



BJ Services

Job Start: Friday, June 25, 2021