



Terra Energy Partners, LLC

INTERMEDIATE POST JOB REPORT

RG 541-18-297 05-103-12472
S:18 T:2S R:97W Rio Blanco CO

CallSheet #: 76944
Proposal #: 52910



INTERMEDIATE Post Job Report

Attention: Mr. Lynn Cass | (970) 263-2716 | lcass@terraep.com
Terra Energy Partners, LLC
4828 Loop Central Dr., Suite 900 | Houston, TX 77081

Dear Mr. Lynn Cass,

Thank you for the opportunity to provide cementing services on this well. American Cementing strives to achieve complete customer satisfaction. If you have any questions regarding the services or data provided, please contact American Cementing at any time.

Sincerely,

Zen Keith

Field Engineer | (307) 757-7178 | zen.keith@americacementing.com

Field Office 28730 US-6, Rifle, CO 81650
Phone: (970) 657-1157

Job Details & Summary

Geometry

Type	Function	OD (in)	ID (in)	Weight (lb/ft)	Thread	Top (ft)	Bottom (ft)	Excess (%)
Casing	Outer	13.375	12.615	54.5	n/a	0	1418	0
Open Hole	Outer	n/a	12.25	n/a	n/a	1418	3235	50
Casing	Inner	9.625	8.921	36	LTC	0	3235	0

Timing

Event	Date/Time
Call Out	5/15/2021 00:00
Depart Facility	5/15/2021 02:15
On Location	5/15/2021 03:15
Rig Up Iron	5/15/2021 04:15
Job Started	5/15/2021 08:00
Job Completed	5/15/2021 08:55
Rig Down Iron	5/15/2021 10:00
Depart Location	5/15/2021 10:20

Equipment / People

Unit Type	Unit	Power Unit	Employee #1
Bulk Trailer	CTF-182	TRB-190	Bell, Bartholomew
Cement Pump	CPF-120	TRH-1140	Gonzales, Ivan
Light Duty Pickups	LDV-063		Corrales, Ignacio

General Job Information

Metrics	Value
Well Fluid Density	8.43 lb/gal
Well Fluid Type	WBM
Rig Circulation Vol	250 bbls
Rig Circulation Time	1 hours
Calculated Displacement	247 bbls
Actual Displacement	247 bbls
Total Spacer to Surface	0 bbls
Total CMT to Surface	0 bbls
Well Topped Out	N/A

Job Details

Metrics	Value
Flare Prior to Job	NO
Flare During Job	NO
Flare at End of Job	NO
Well Full Prior to Job	NO
Well Fluid Density Into Well	8.4 lb/gal
Well Fluid Density Out of Well	0 lb/gal

Job Details (cont.)

Metrics	Value
BHCT	87 °F
BHST	116 °F

Water Analysis

Metrics	Value	Recommended
Water Source	Upright Rig Tank	
Temperature	65 °F	50-80 °F
pH Level	6	5.5-8.5
Chlorides	500 mg/L	0-3000 mg/L
Total Alkalinity	500	0-1000
Total Hardness	250 mg/L	0-500 mg/L
Carbonates	50 mg/L	0-100 mg/L
Sulfates	500 mg/L	0-1500 mg/L
Potassium	300 mg/L	0-3000 mg/L
Iron	50 mg/L	0-300 mg/L

Circulation

Lost Circulation Experienced
No

Job Execution Information

Fluid	Product	Function	Density (lb/gal)	Yield (ft ³ /sk)	Water Rq. (gal/sk)	Water Rq. (gal/bbl)	Volume (sks)	Volume (bbl)	Designed Top (ft)
1	Water	Flush	8.34			42.00		40.00	1757
2	Lead Cement	Lead	12.30	2.36	13.32		100.00	42.07	2235
3	Tail Cement	Tail	12.80	2.10	11.34		121.00	45.19	2735
4	Displacement	DisplacementFinal	8.34			42.00		247.00	0

Job Fluid Details

Fluid	Type	Fluid	Product	Function	Conc.	Uom
2	Lead	Lead Cement	ASTM TYPE III	Cement	100.00	%
2	Lead	Lead Cement	A-10	Accelerator	5.00	%BWOB
2	Lead	Lead Cement	A-2	Accelerator	2.00	lb/sk
2	Lead	Lead Cement	A-7P	Accelerator	2.00	lb/sk
2	Lead	Lead Cement	FP-24	Defoamer	0.30	%BWOB
2	Lead	Lead Cement	IntegraSeal PHENO	LostCirculation	3.00	lb/sk
2	Lead	Lead Cement	IntegraSeal POLI	LostCirculation	0.25	lb/sk
3	Tail	Tail Cement	ASTM TYPE III	Cement	100.00	%
3	Tail	Tail Cement	A-10	Accelerator	5.00	%BWOB
3	Tail	Tail Cement	A-2	Accelerator	2.00	lb/sk
3	Tail	Tail Cement	A-7P	Accelerator	2.00	lb/sk
3	Tail	Tail Cement	FP-24	Defoamer	0.30	%BWOB
3	Tail	Tail Cement	IntegraSeal PHENO	LostCirculation	3.00	lb/sk
3	Tail	Tail Cement	IntegraSeal POLI	LostCirculation	0.25	lb/sk

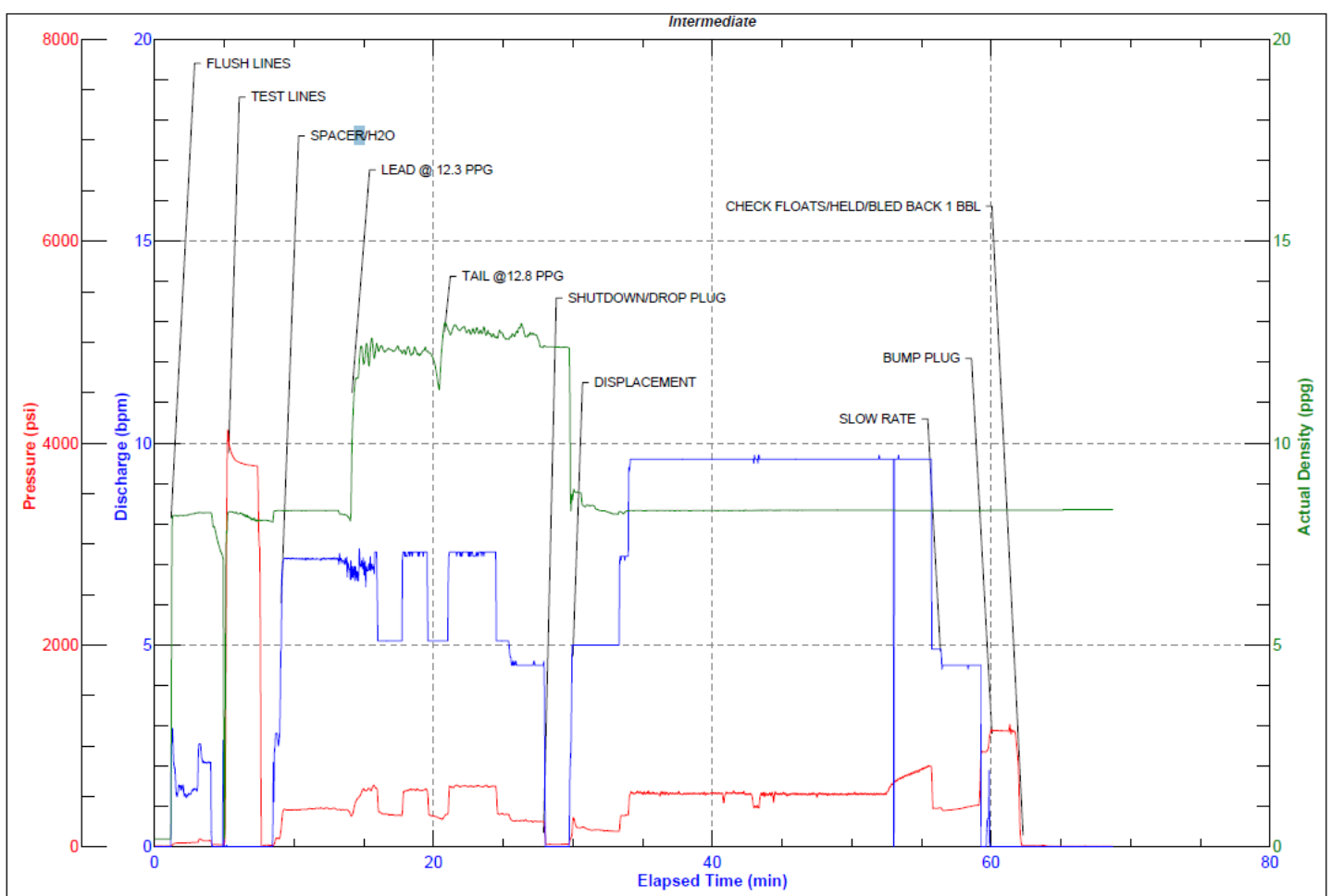
Job Logs

Line	Event	Date (MM/DD/YY)	Time (HH:MM)	Density (lb/gal)	Pump Rate (bpm)	Pump Volume (bbls)	Pipe Pressure (psi)	Comment
1	Arrive On Location	5/15/2021	03:15					ARRIVED ON LOCATION/ RIG JUST STARTED RUNNING CASING
2	Safety Meeting	5/15/2021	03:20					HAZARD ASSESSMENT/TEST H2O
3	Other	5/15/2021	03:30					SPOT EQUIPMENT
4	Safety Meeting	5/15/2021	03:40					RIG UP SAFETY MEETING
5	Rig Up Iron	5/15/2021	03:50					RIG UP EQUIPMENT
6	Other	5/15/2021	04:15					END OF RIG UP/ RIG STILL RUNNING CASING/ RTS 04:00 START OF SERVICES
7	OTHER	5/15/2021	07:00					END OF RUNNING CASING
8	Other	5/15/2021	07:20					RIG DOWN CASING CREW
9	Rig Up Iron	5/15/2021	07:30					RIG UP CEMENT HEAD AND RIG FLOOR
10	Safety Meeting	5/15/2021	07:45					JOB PROCEDURE AND ANALYST MEETING
11	Pressure Test Lines	5/15/2021	08:00	8.34	3	5	3700	TEST LINES
12	Pump Spacer	5/15/2021	08:05	8.34	7	40	370	SPACER/H2O
13	Pump Lead Cement	5/15/2021	08:10	12.3	7	42	580	LEAD SLURRY/ASTM TYPE III
14	Pump Tail Cement	5/15/2021	08:16	12.8	7	45	600	TAIL SLURRY/ ASTM TYPE III
15	Drop Top Plug	5/15/2021	08:24					SHUTDOWN/DROP TOP PLUG
16	Pump Displacement	5/15/2021	08:25	8.34	9.5	247	540	DISPLACEMENT
17	Pump Displacement	5/15/2021	08:50		9.5		800	RATE AND PRESSURE BEFRE SLOW RATE
18	Pump Displacement	5/15/2021	08:51		4.5		390	SLOW RATE
19	Pump Displacement	5/15/2021	08:54		4.5		440	RATE AND PRESSURE BEFORE BUMP PLUG
20	Land Plug	5/15/2021	08:55			247	1100	BUMP PLUG
21	Check Floats	5/15/2021	08:59					CHECK FLOATS/HELD/BLED BACK 1 BBL
22	Safety Meeting	5/15/2021	09:00					AAR/RIG DOWN SAFETY MEETING
23	Rig Down Iron	5/15/2021	09:10					START RIG DOWN
24	End Job	5/15/2021	10:00					END OF RIG DOWN
25	Other	5/15/2021	10:05					SPOT OFF EQUIPMENT
26	Depart Location	5/15/2021	10:20					LEAVE LOCATION

Pump Diagrams



JobMaster Program Version 5.01C1
 Job Number: 76944
 Customer: TERRA ENERGY PARTNERS, LL
 Well Name: RG 541-18-2976



BJ Services

Job Start: Saturday, May 15, 2021