



Terra Energy Partners, LLC

INTERMEDIATE POST JOB REPORT

RG 542-18-297 05-103-12473
S:18 T:2S R:97W Rio Blanco CO

CallSheet #: 76744
Proposal #: 52519



INTERMEDIATE Post Job Report

Attention: Mr. Lynn Cass | (970) 263-2716 | lcass@terraep.com
Terra Energy Partners, LLC
4828 Loop Central Dr., Suite 900 | Houston, TX 77081

Dear Mr. Lynn Cass,

Thank you for the opportunity to provide cementing services on this well. American Cementing strives to achieve complete customer satisfaction. If you have any questions regarding the services or data provided, please contact American Cementing at any time.

Sincerely,

Zen Keith

Field Engineer | (307) 757-7178 | zen.keith@americacementing.com

Field Office 28730 US-6, Rifle, CO 81650
Phone: (970) 657-1157

Job Details & Summary

Geometry

Type	Function	OD (in)	ID (in)	Weight (lb/ft)	Thread	Top (ft)	Bottom (ft)	Excess (%)
Casing	Outer	13.375	12.615	54.5	n/a	0	1421	0
Open Hole	Outer	n/a	12.25	n/a	n/a	1421	3250	50
Casing	Inner	9.625	8.921	36	LTC	0	3250	0

Equipment / People

Unit Type	Unit	Power Unit	Employee #1
Bulk Trailer	CTF-249	TRB-769	Kirchenwitz, Jacob
Cement Pump	CPF-058	TRH-1140	Gonzales, Ivan
Light Duty Pickups	LDV-062		Linn, Paul

Timing

Event	Date/Time
Call Out	4/20/2021 14:04
Depart Facility	4/20/2021 17:18
On Location	4/20/2021 18:49
Rig Up Iron	4/20/2021 19:08
Job Started	4/21/2021 00:36
Job Completed	4/21/2021 02:15
Rig Down Iron	4/21/2021 02:44
Depart Location	4/21/2021 04:04

General Job Information

Metrics	Value
Well Fluid Density	9.2 lb/gal
Well Fluid Type	WBM
Rig Circulation Vol	240 bbls
Rig Circulation Time	0.5 hours
Calculated Displacement	250.05 bbls
Actual Displacement	250 bbls
Total Spacer to Surface	0 bbls
Total CMT to Surface	0 bbls
Well Topped Out	No

Job Details

Metrics	Value
Flare Prior to Job	No
Flare During Job	No
Flare at End of Job	No
Well Full Prior to Job	Yes
Well Fluid Density Into Well	9.2 lb/gal
Well Fluid Density Out of Well	9.2 lb/gal

Job Details (cont.)

Metrics	Value
BHCT	87 °F
BHST	116 °F

Water Analysis

Metrics	Value	Recommended
Water Source	Upright Rig Tank	
Temperature	58.8 °F	50-80 °F
pH Level	8	5.5-8.5
Chlorides	450 mg/L	0-3000 mg/L
Total Alkalinity	180	0-1000
Total Hardness	0 mg/L	0-500 mg/L
Carbonates	0 mg/L	0-100 mg/L
Sulfates	225 mg/L	0-1500 mg/L
Potassium	300 mg/L	0-3000 mg/L
Iron	0 mg/L	0-300 mg/L

Circulation

Lost Circulation Experienced
No

Job Execution Information

Fluid	Product	Function	Density (lb/gal)	Yield (ft ³ /sk)	Water Rq. (gal/sk)	Water Rq. (gal/bbl)	Volume (sks)	Volume (bbl)	Designed Top (ft)
1	Water	Flush	8.34			42.00		40.00	1772
2	Lead Cement	Lead	12.30	2.36	13.32		100.00	42.07	2250
3	Tail Cement	Tail	12.80	2.10	11.34		121.00	45.19	2750
4	Displacement	DisplacementFinal	8.34			42.00		248.00	0

Job Fluid Details

Fluid	Type	Fluid	Product	Function	Conc.	Uom
2	Lead	Lead Cement	ASTM TYPE III	Cement	100.00	%
2	Lead	Lead Cement	A-10	Accelerator	5.00	%BWOB
2	Lead	Lead Cement	A-2	Accelerator	2.00	lb/sk
2	Lead	Lead Cement	A-7P	Accelerator	2.00	lb/sk
2	Lead	Lead Cement	FP-24	Defoamer	0.30	%BWOB
2	Lead	Lead Cement	IntegraSeal PHENO	LostCirculation	3.00	lb/sk
2	Lead	Lead Cement	IntegraSeal POLI	LostCirculation	0.25	lb/sk
3	Tail	Tail Cement	ASTM TYPE III	Cement	100.00	%
3	Tail	Tail Cement	A-10	Accelerator	5.00	%BWOB
3	Tail	Tail Cement	A-2	Accelerator	2.00	lb/sk
3	Tail	Tail Cement	A-7P	Accelerator	2.00	lb/sk
3	Tail	Tail Cement	FP-24	Defoamer	0.30	%BWOB
3	Tail	Tail Cement	IntegraSeal PHENO	LostCirculation	3.00	lb/sk
3	Tail	Tail Cement	IntegraSeal POLI	LostCirculation	0.25	lb/sk

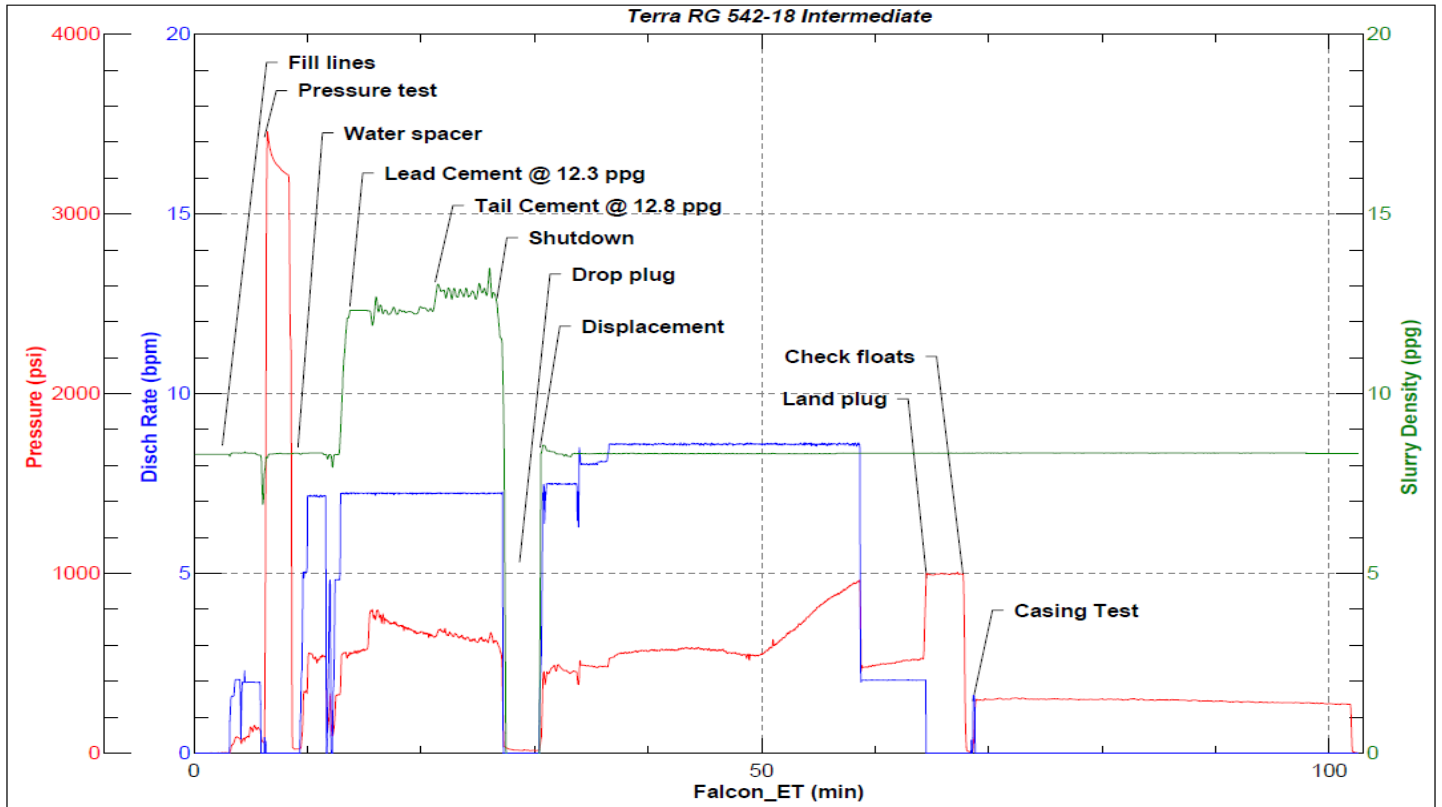
Job Logs

Line	Event	Date (MM/DD/YY)	Time (HH:MM)	Density (lb/gal)	Pump Rate (bpm)	Pump Volume (bbls)	Pipe Pressure (psi)	Comment
1	Callout	4/20/2021	14:04					Callout, on location of 19:00 4/20/21
2	Safety Meeting	4/20/2021	16:26					Pre-Convoy safety meeting
3	Depart Location	4/20/2021	17:18					Depart from Rifle yard for H&P 329
4	Arrive On Location	4/20/2021	18:49					Arrive on location, rig was just starting to run casing
5	Safety Meeting	4/20/2021	18:57					Pre-Rig up safety meeting
6	Rig Up Iron	4/20/2021	19:08					Rig up all ground equipment
7	Safety Meeting	4/21/2021	00:10					Pre-Job safety meeting with rig crew, company man, and American Cementing
8	Rig Up Iron	4/21/2021	00:26					Load plug in plug container (verified by company man), stab plug container, and hook up lines
9	Fill Lines	4/21/2021	00:36	8.4	2	5	131	Fill lines with 5 bbls fresh water
10	Pressure Test Lines	4/21/2021	00:40				3418	Pressure test to 3418 psi
11	Pump Spacer	4/21/2021	00:43	8.4	7	40	575	Pump water spacer
12	Pump Lead Cement	4/21/2021	00:50	12.3	7	5	793	Pump Lead cement @ 12.3 ppg
13	Pump Lead Cement	4/21/2021	00:55	12.3	7	43	645	Pump Lead cement
14	Pump Tail Cement	4/21/2021	00:56	12.8	7	5	688	Pump Tail cement @ 12.8 ppg
15	Pump Tail Cement	4/21/2021	01:00	12.8	7	46	518	Pump Tail cement
16	Shutdown	4/21/2021	01:00					Shutdown with 46 bbls of Tail Cement away
17	Drop Top Plug	4/21/2021	01:02					Drop plug verified by company man
18	Pump Displacement	4/21/2021	01:04	8.4	7.5	10	416	Pump freshwater displacement
19	Pump Displacement	4/21/2021	01:11	8.4	8.5	50	537	Pump freshwater displacement
20	Pump Displacement	4/21/2021	01:16	8.4	8.5	100	583	Pump freshwater displacement
21	Pump Displacement	4/21/2021	01:22	8.4	8.5	150	549	Pump freshwater displacement
22	Pump Displacement	4/21/2021	01:28	8.4	8.5	200	757	Pump freshwater displacement
23	Pump Displacement	4/21/2021	01:32	8.4	8.5	240	986	Pump freshwater displacement
24	Pump Displacement	4/21/2021	01:38	8.4	2	250	528	Pump freshwater displacement
25	Land Plug	4/21/2021	01:38				995	Land the plug @ 528 psi took to 995 psi
26	Check Floats	4/21/2021	01:42					Check floats, floats held 1 bbl back
27	Other	4/21/2021	01:42				300	30 min casing test, started @ 300 psi ended @ 276 psi
28	Safety Meeting	4/21/2021	02:18					Pre-rig down safety meeting with rig crew
29	Rig Down Iron	4/21/2021	02:24					Rid down rig floor
30	Safety Meeting	4/21/2021	02:36					Pre-Rig down safety meeting with American Cementing crew
31	Rig Down Iron	4/21/2021	02:44					Rig down all equipment
32	Safety Meeting	4/21/2021	03:45					Pre-Convoy safety meeting
33	Depart Location	4/21/2021	04:04					Depart from location for Rifle yard. Thank you for using American Cementing, Andrew Linn, and crew

Pump Diagrams



JobMaster Program Version 5.01C1
Job Number: 76744
Customer: Terra
Well Name: RG 542-18



BJ Services

Job Start: Wednesday, April 21, 2021