



August 23, 2021

Mr. Kyle Shefte
McElvain Energy Inc.
1600 Stout Street, Suite 500
Denver, CO 80202

**Subject: Form 4 Sundry Notice – Final Reclamation
McElvain Energy Inc. (Operator: 55575)
JEFFERSON 1, Location ID: 404461
SENE S10-T3S-R52W
Washington County, Colorado**

Dear Mr. Shefte,

WSP USA (WSP) was contracted by McElvain Energy Inc. to complete final reclamation inspections at plugged and abandoned (P&A) well sites located in Washington County, Colorado. The reclamation inspections were conducted in accordance with Colorado Oil and Gas Conservation Commission (COGCC) Rule 1004.

The former JEFFERSON 1 well (API: 05-121-10675) was P&A'd on October 28, 2002 according to Form 6 Document Number 01335091. On July 16, 2021, WSP conducted a final reclamation inspection for the former JEFFERSON 1 well pad (Location ID: 404461). The reclaimed location is situated on non-irrigated rangeland and has been returned to that land use. A modified step-point vegetation survey was conducted on the reclaimed well pad and on adjacent reference areas for comparison. Foliar and basal cover, along with non-vegetated, and noxious weed occurrences were documented. No noxious weeds were observed and undesirable species, if present, were excluded from the vegetative coverage calculation. Survey results indicate the reclaimed area has a foliar vegetative cover that is 80% of the undisturbed reference area.

WSP personnel located the P&A wellhead location using a handheld Trimble (R1) Global Positioning System (GPS) unit and latitude and longitude coordinates obtained from the COGCC online database. A general site location map is included as Figure 1; and the Site Map displaying the location of the reclaimed site on a 2020 aerial imagery is included as Figure 2. Photographs of the P&A location were taken facing each cardinal direction from the P&A wellhead location. The photographic log is included as Attachment 1.

Based on the successful reclamation of the JEFFERSON 1 site, a Form 4 Sundry Notice requesting final reclamation status has been prepared for the submittal to the COGCC. This letter will be included as an attachment to the electronic Form 4 submittal.

If you have any questions or need additional information, please do not hesitate to contact us.

Kind regards,

A handwritten signature in black ink, appearing to read 'Tanna Lyon'.

Tanna Lyon,
Lead Consultant, Environmental Scientist

A handwritten signature in black ink, appearing to read 'Ryan Dial'.

Ryan Dial,
Senior Consultant, Environmental Scientist

WSP USA
4600 WEST 60TH AVENUE
ARVADA CO 80003

Tel.: 303-433-9788
wsp.com



Attachments:

Figure 1	Site Location Map
Figure 2	Site Map
Enclosure A	Photographic Log

.

FIGURES

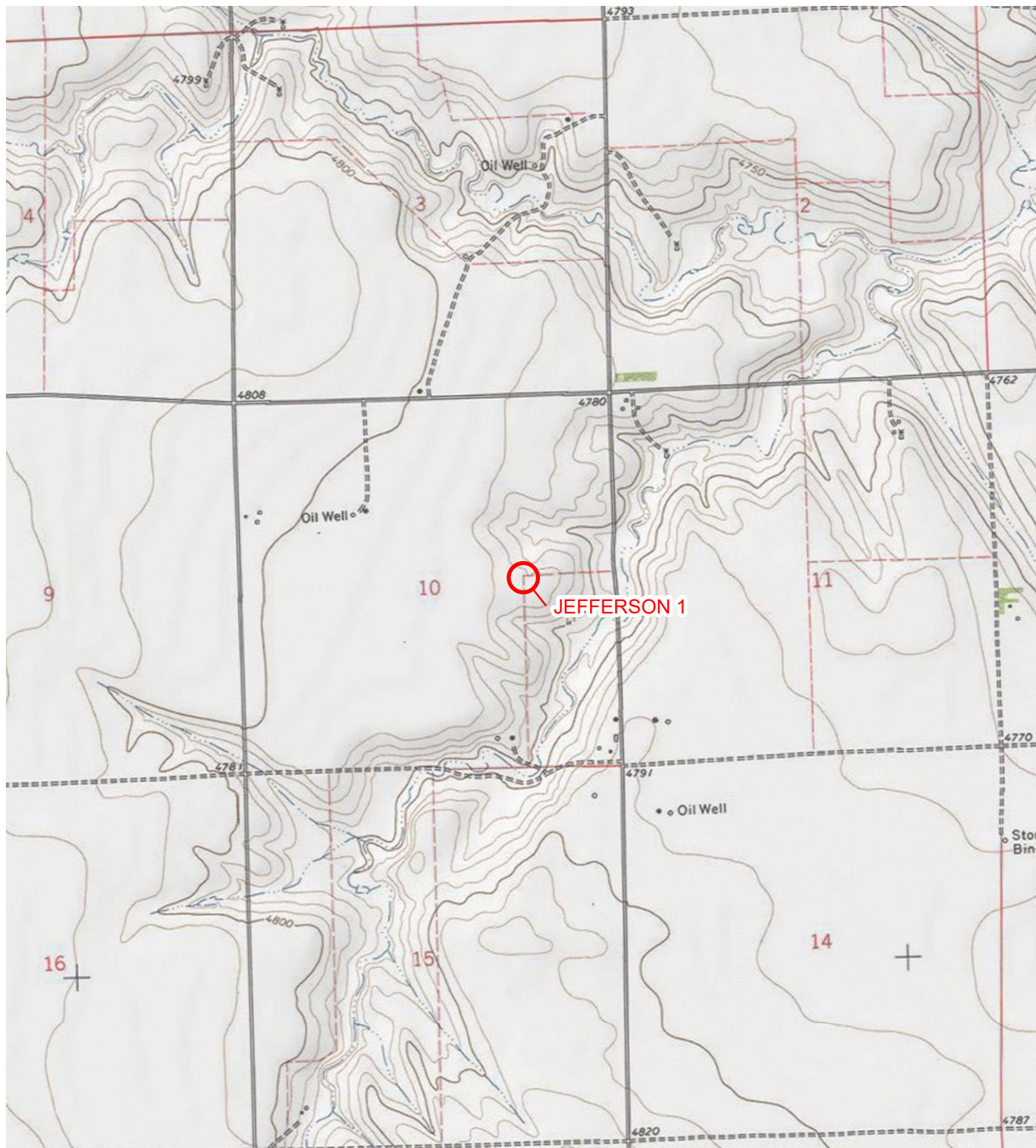


IMAGE COURTESY OF ESRI/USGS

LEGEND

○ SITE LOCATION

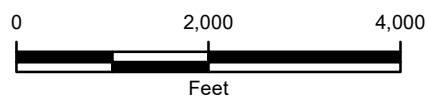


FIGURE 1
SITE LOCATION MAP
JEFFERSON 1
SENE 10-3S-52W
WASHINGTON COUNTY, COLORADO
MCELVAIN ENERGY, INC.





LEGEND

● WELLHEAD

IMAGE COURTESY OF ESRI

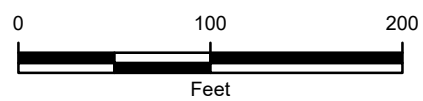


FIGURE 2
SITE MAP
JEFFERSON 1
SENE 10-3S-52W
WASHINGTON COUNTY, COLORADO
MCELVIN ENERGY, INC.



ENCLOSURE A – PHOTOGRAPHIC LOG

PHOTOGRAPHIC LOG



Photograph 1: View facing north as required in Colorado Oil and Gas Conservation Commission (COGCC) Rule 1004.



Photograph 2: View facing east as required in COGCC Rule 1004.

PHOTOGRAPHIC LOG



Photograph 3: View facing south as required in COGCC Rule 1004.



Photograph 4: View facing west as required in COGCC Rule 1004.

PHOTOGRAPHIC LOG



Photograph 5: Overall site view per COGCC Rule 1004.