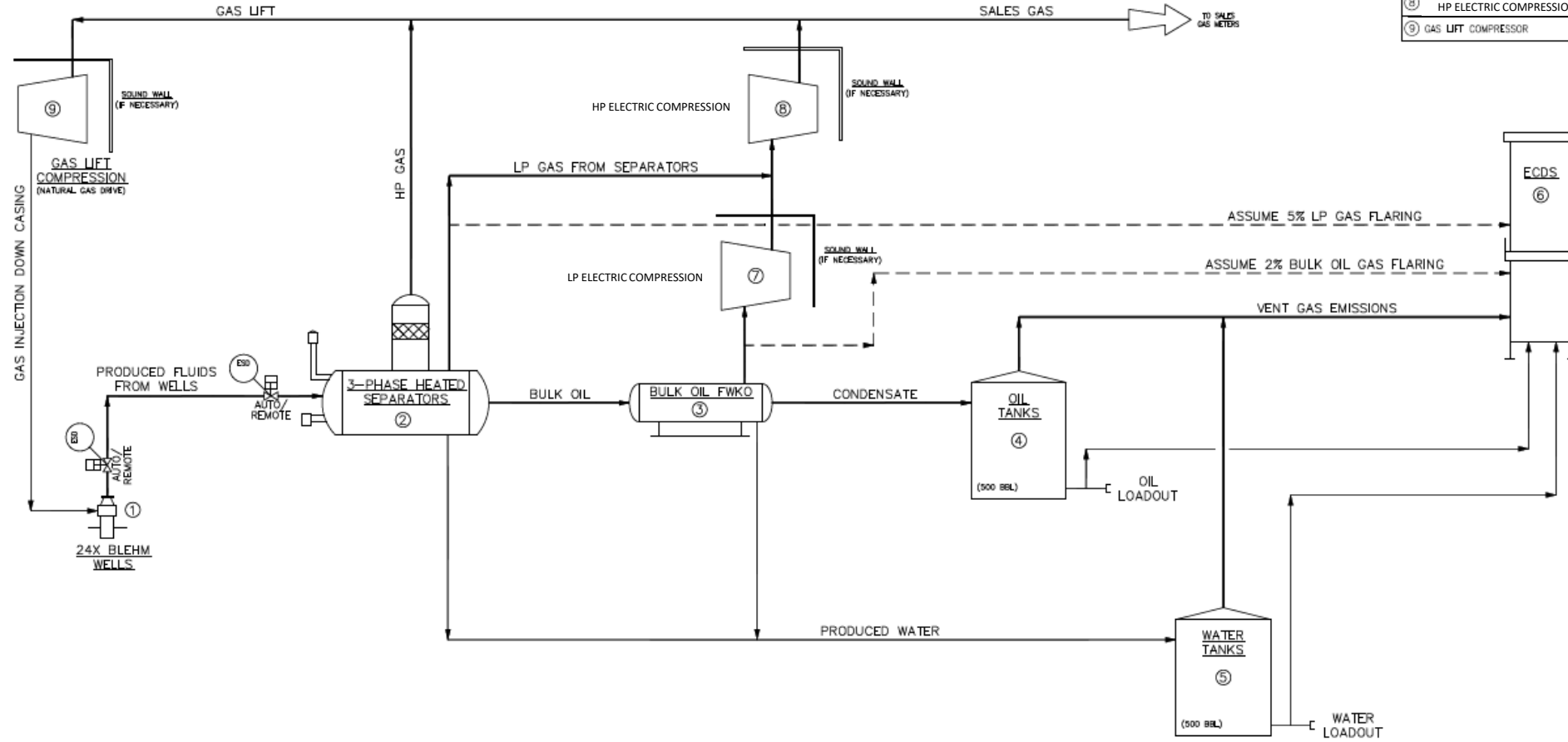





PRODUCTION PROCESS FLOW SUMMARY  
BAYSWATER EXPLORATION & PRODUCTION, LLC  
BLEHM PRODUCTION FACILITY  
WELD COUNTY, COLORADO

EQUIPMENT NAME	STATUS	QTY.
① WELL HEAD	PERMANENT	24
② 3-PHASE HEATED SEPARATOR	PERMANENT	24
③ BULK OIL FWKO	PERMANENT	2
④ OIL TANKS	PERMANENT	12
⑤ WATER TANKS	PERMANENT	2
⑥ ECDS	PERMANENT	4
⑦ LP ELECTRIC COMPRESSION	PERMANENT	2
⑧ HP ELECTRIC COMPRESSION	PERMANENT	2
⑨ GAS LIFT COMPRESSOR	PERMANENT	1



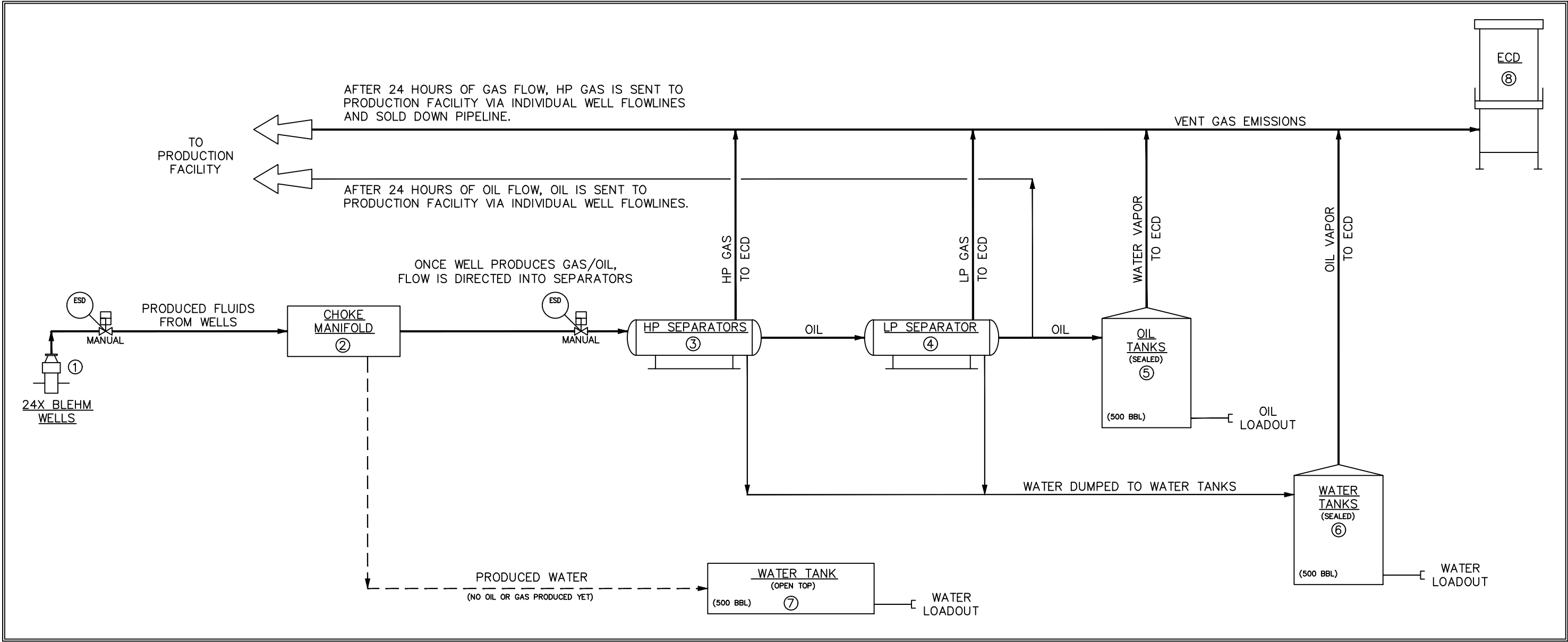
NOTE:

REFERENCE DRAWINGS			REVISIONS				ENGINEERING RECORD		 <b>BAYSWATER EXPLORATION &amp; PRODUCTION LLC</b> BLEHM - 24 WELL PAD PROCESS FLOW SUMMARY	DWG. NO. 5200-01-1210 REV A
NO.	TITLE		NO.	DATE	DESCRIPTION	BY	CHK.	APP.		
 			A	06/24/21	ISSUED FOR REVIEW	NAS	BS	RK	PROJ. ENGR: DESIGN: 5200 SCALE: N.T.S.	



EQUIPMENT NAME	STATUS	QTY.
① WELL HEAD	PERMANENT	24
② CHOKE MANIFOLD	TEMPORARY	–
③ HP SEPARATORS	TEMPORARY	2
④ LP SEPARATOR	TEMPORARY	1
⑤ OIL TANKS (SEALED)	TEMPORARY	4
⑥ WATER TANKS (SEALED)	TEMPORARY	10
⑦ WATER TANK (OPEN TOP)	TEMPORARY	1
⑧ ECD	TEMPORARY	1

FLOWBACK PROCESS FLOW SUMMARY  
BAYSWATER EXPLORATION & PRODUCTION, LLC  
BLEHM PRODUCTION FACILITY  
WELD COUNTY, COLORADO

TEMPORARY SOUND WALL SURROUNDING ENTIRE FACILITY



NOTE:

REFERENCE DRAWINGS		REVISIONS						ENGINEERING RECORD	
NO.	TITLE	NO.	DATE	DESCRIPTION	BY	CHK.	APP.	BY	DATE
								DRN: NAS	06/30/21
								DES: NAS	06/30/21
								CHK: BS	06/30/21
								APP: RK	06/30/21
 								AFE No.	
								JOB NO.	5200
								PROJ. ENGR:	
		A	06/30/21	ISSUED FOR REVIEW	NAS	BS	RK	(FORMATTED 22"x34") SCALE:	N.T.S.



BAYSWATER EXPLORATION & PRODUCTION LLC  
BLEHM – 24 WELL PAD  
PROCESS  
FLOWBACK PROCESS FLOW SUMMARY

DWG. NO. 5200-01-1220

REV A