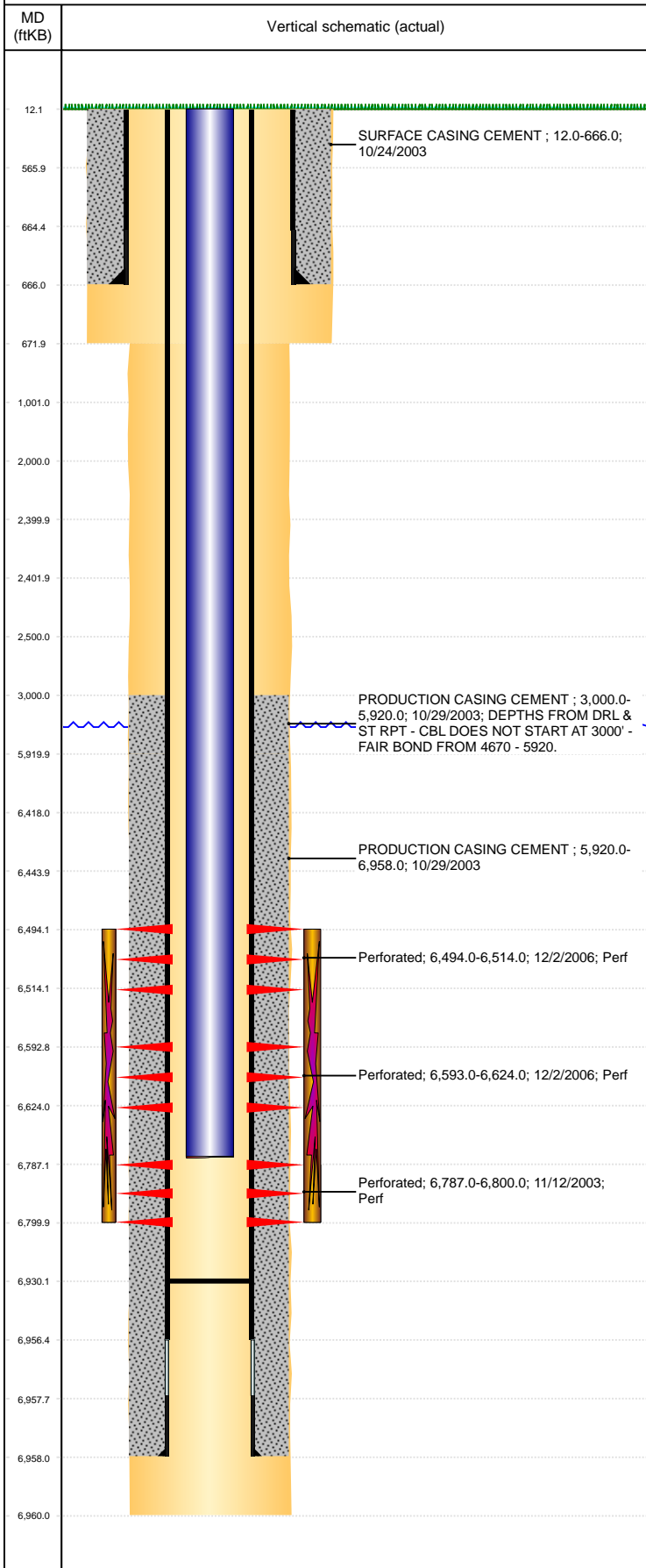


**Well Name: WARDLAW 35-24**

VERTICAL, ORIGINAL HOLE, 9/21/2021 2:19:44 PM



Well Header									
API 05-123-21659			Business Unit DJ BASIN			District 15		Well Config VERTICAL	
KB - GL / MSL (ft... 12.00		Spud Date 10/23/2003		P & A Date		Well Production Status PR			SoRT No
Comment									
Surface Location (Congressional)									
Qtr 3 SE	Qtr 4 NW	Section 35	Twnshp 6	Twنش... N	Range 64	Rng E/... W	Actual Latitude (°) 40.44463000		Actual Longitude (°) -104.51921000
Wellbore Sections									
Section Des			Size (in)			Act Top, MD (ftKB)		Act Btm, MD (ftKB)	
SURFACE			12 1/4			12		672	
PRODUCTION			7 7/8			672		6,960	
Casing Strings									
Csg Des			Run Date		OD (in)	Wt/Len (lb/ft)	Grade	Top, MD (ftKB)	MD (ftKB)
Surface			10/24/2003		8 5/8	24.00		12.0	666.0
Production			10/29/2003		4 1/2	11.60		12.0	6,958.0
Cement									
Des					Start Date		Top (ftKB)		Btm (ftKB)
SURFACE CASING CEMENT					10/24/2003		12.0		666.0
PRODUCTION CASING CEMENT					10/29/2003		3,000.0		5,920.0
PRODUCTION CASING CEMENT					10/29/2003		5,920.0		6,958.0
Zone Statuses									
Zone Name		Status Date	Status	Fluid Type	Job			Prod Method	
CODELL		11/17/2003	PR		DRILLING/COMPLETION - ORIGINAL, 10/23/200...				
CODELL		12/8/2006	PR		RECOMPLETION, 11/28/2006 00:00				
NIOBRARA		12/8/2006	PR		RECOMPLETION, 11/28/2006 00:00				
Perforation Data									
Linked Zone			Bnch/Stg	Entered Shot Total	Top (ftKB)		Btm (ftKB)		Date
NIOBRARA, ORIGINAL HOLE			A	40	6,494.00		6,514.00		12/2/2006
NIOBRARA, ORIGINAL HOLE			B	124	6,593.00		6,624.00		12/2/2006
CODELL, ORIGINAL HOLE				52	6,787.00		6,800.00		11/12/2003
Stimulation Intervals									
Zone					Start Date		Top (ftKB)		Btm (ftKB)
NIOBRARA-CODELL, ORIGINAL HOLE					12/6/2006		6,494.0		6,800.0
CODELL, ORIGINAL HOLE					11/14/2003		6,787.0		6,800.0
Other In Hole									
Run Date		Des			Make		OD (in)	Top (ftKB)	Btm (ftKB)
Logs									
Date		Type					Top, MD (ftKB)		Btm, MD (ftKB)
10/29/2003		COMPENSATED DENSITY					3,450.0		6,937.0
10/29/2003		INDUCTION					661.0		6,957.0
11/11/2003		CBL/CCL/GR					4,700.0		6,905.0
4/18/2016		GYRO					0.0		6,700.0
Plug Back Total Depths									
Date		Type			Com				Depth (ftKB)
11/11/2003		FILL			DEPTH LOGGER FROM CBL				6,907.0
1/7/2007		FILL			CLEAN OUT & LAND TBG				6,930.0