



Magnum Cementing Services LLC LLC  
600 17th Street, Ste 2800S  
Denver, Colorado 80202

## Field Ticket

Job Date: June 16, 2021  
Job Number: JOB00100316

### Bill To:

PDC Energy  
1775 Sherman Street  
Suite 3000  
Denver, Colorado  
80204

UWI: Bruzewski 33-15F  
Surface: SW/SE Sec. 33, T4N, R66W

Pricing Area: Area 1  
Competitive: CHYN  
Depth: 4141  
Job Type: Balanced Plug

	Units	Per	Unit Price	Cost
<b>Services and Equipment</b>				
PCMP Unit Travel	65.	MI		
PCMP Add Time: Operating	2.	HR		
PCMP - Remedial Set Up (6 Hr min)	4,141.	FT		
Add Time: Non Operating	11.	HR		
Tax Recovery	6.5	Job		
<b>Equipment</b>				
MDAC	1.	Job		
Communication Headsets	2.	RDIO		
<b>Material Handling &amp; Delivery</b>				
Bulk Material Blending	699.	SKS		
Bulk Material Delivery	45,435.	SKMI		
<b>Products &amp; Materials</b>				
MCA-1	234.03	LB		
MCA-1	53.51	LB		
MCFL-10	140.42	LB		
MCFL-10	64.21	LB		
MCFL-10	160.25	LB		
MCR-2	50.	LB		
MCR-1	53.42	LB		
MCDF-L	8.	GAL		
MAG S 14.1	269.	SKS		
MAG S 14.1	123.	SKS		
MAG S 14.1	307.	SKS		

### Customer Stamp:

SERVICES PROVIDED BY MAGNUM CEMENTING SERVICES  
LTD., ARE GOVERNED BY AND SUBJECT TO THE ATTACHED  
TERMS AND CONDITIONS

Received By: Bud Holman 970.301.3897  
Comments:

# US Treatment Report



**Customer:** PDC Energy  
**Rep:** Bud Holman  
**Supervisor:** Wesley Bell  
**Job Type:** US Remedial  
 Balanced Plug

**Ria:** Ensign 350  
**Well:** Bruzewski 33-15F  
**UWI:** Bruzewski 33-15F  
**Surface:** SW/SE Sec. 33, T4N,  
 R66W

**Job #:** JOB00100316  
**Job Date:** 6/15/2021  
**Time Requested:** 3:00  
**Time Arrived:** 2:00  
**Time Released:** 10:45

307 sk MAG S 14.1 + 0.60% MCFL-10 + 0.20% MCR-1

Yield: 1.28 ft<sup>3</sup>/sk = 69.99bbls Mix Water: 5.89 gal/sk = 1808.23gal

123 sk MAG S 14.1 + 0.60% MCFL-10 + 0.50% MCA-1

Yield: 1.28ft<sup>3</sup>/sack = 28.04bbls Mix Water: 5.89gal/sack = 724.47gal

360 sk MAG S 14.1 + 0.60% MCFL-10 + 1.00% MCA-1

Yield: 1.28ft<sup>3</sup>/sack = 82.07bbls Mix Water: 5.89gal/sack = 2120.4gal

BHCT (F)	127	BHST (F)	154	Production Casing Casing Size	8.625
Production Casing Weight (lb/ft)	24	Tubing Casing Size (in)	2.875	(in) Tubing Weight (lb/ft)	7.9
Hole Size (in)	12	Max Tbg Pressure (psi)	18480	Mud Density (lb/gal)	8.5
Mud Type	Fresh	Surface Casing (in)	8.625	Surface Casing Grade	J-55
Surface Casing Length (ft)	507	Surface Casing WT (lb/ft)	24	TMD (ft)	4145
Tubing (in)	2.875	Tubing Grade	P-110	Tubing Length (ft)	4145
Tubing WT (lb/ft)	7.9	TVD (ft)	4145	Unkown UDF	Tubing
Unkown UDF	Production n Casing				

Treatment Info: Sacks Used: 699 Sacks Not Used: 0

Preflush: 10bbls Fresh Water & 5bbls Fresh Water & 5bbls Fresh Water

Circulation Time: 0  
 Slurry Temp: 90 Bulk Sample: No  
 Water Temp: 60 Water Sample: No  
 Bulk Temp: 80 Slurry Sample: Yes  
 Air Temp: 92 Air Pressure 29.8  
 Slurry Returns: 1 Plug Bumped: No Pump Out Lines: No Float Held: No  
 Cement Class: Type III Humidity: 29 Precipitation: 0

Displace: 18bbls Fresh Water & 6.8bbls Fresh Water

Time	Pressure psi	Annular Pressure psi	Volume Per Stage bbls	Total Stage Volume bbls	Rate bbls/mi n	Treatment Detail
02:00	0.00					Arrive on Location - Arrive on location, requested time was 03:00
02:15	0.00					Spot and rig in pump and bulk units
09:35	0.00					Safety Meeting - Hold safety meeting with rig crew
09:57	1,800.00			2	2	Start Pressure Test - Fill lines and test with fresh water
09:59	250.00			8	2	Attain Circulation to Surface - Establish circulation with fresh water
10:18	200.00			69.9	3	Pump Slurry - Pump 69.9bbks, 307sks, Mag S 14.1, Y: 1.28, WR:5.89. Top of plug calculated at 3645'

10:45	30.00			18	2	Displace - Displace to balance with fresh water
10:57	0.00					Stop Pumping - Shut down, check for flow back to unit, no flow. Rig POOH above plug top and circulates well for 4hrs
15:00	0.00					Rig tagged cement at 3492'
15:50	120.00			5	3	Attain Circulation to Surface - Pump fresh water to establish circulation
15:55	100.00			28	3	Pump Slurry - Pump 28bbls, 123sks, Mag S 14.1, Y: 1.28, WR: 5.89. Expected top at 1317'
16:04	40.00			6.8	2	Displace - Displace to balance with fresh water,
16:08	0.00					Shut down, Rig POOH above plug and circulate
19:30	0.00					Rig tagged cement at 1299'. POOH to 719'
19:48	50.00			5	2	Attain Circulation to Surface - Establish circulation with fresh water
19:53	200.00			58	3	Pump Slurry - Pump 58bbls, 254sks, Mag S 14.1, Y: 1.28, WR: 5.89. Top of cement at surface
20:15	0.00					Shut down, Rig pulls all tubing out of well.
20:50	50.00			3.5	.5	Pump Slurry - Top off with 3.5bbls cement at 14.1ppg, 15sks, Mag S . Watch for fall back.
21:20	0.00					Wash Up Truck - No fallback on cement. Wash up pump and flowback iron.
22:30	0.00					Leave Location



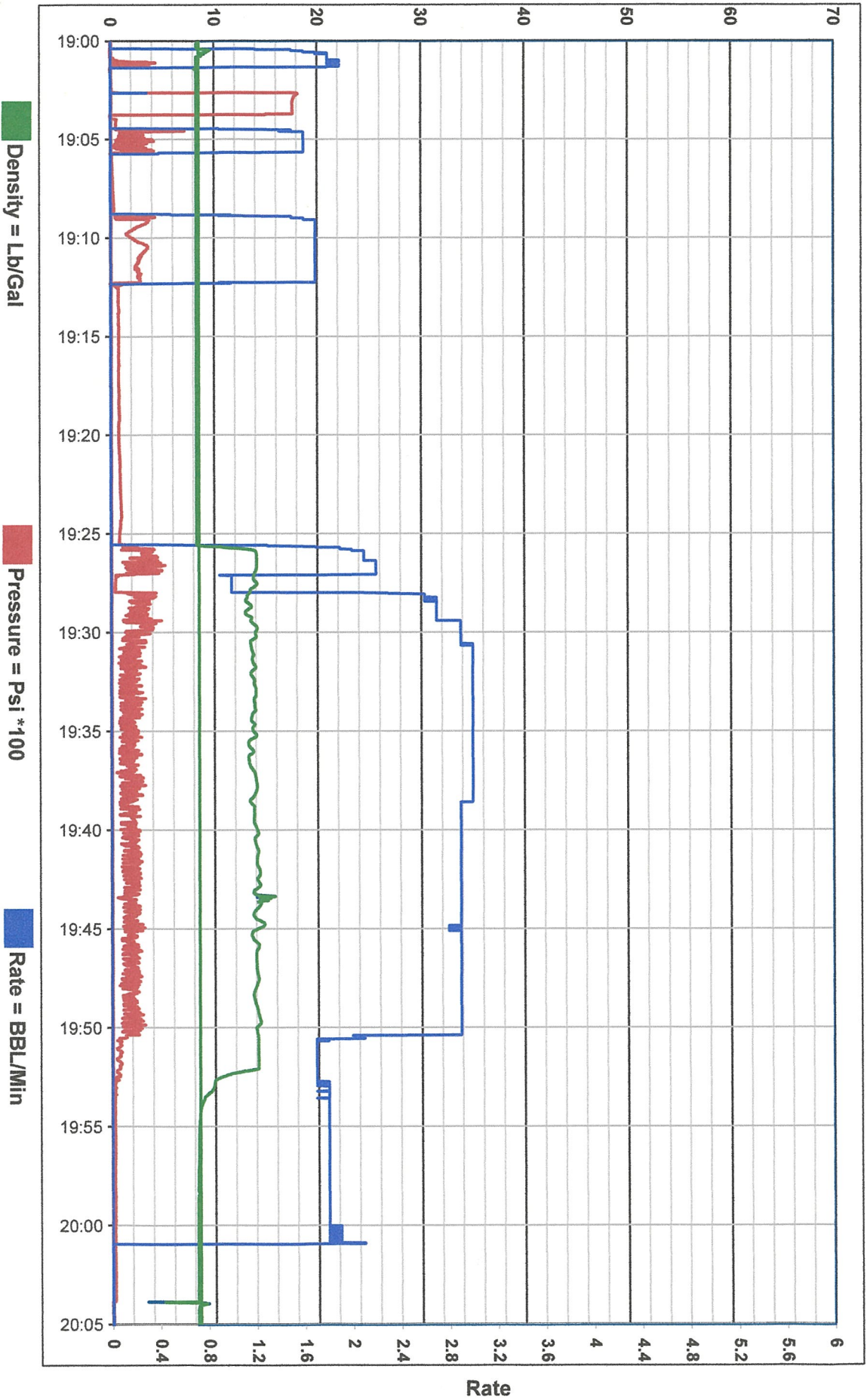


Customer: PDC  
Date: 6/8/2021  
Ticket: 100316

Well Name: Bruzewski 33-15F  
UWI: Bruzewski 33-15F  
Job Type: P&A

Unit  
1014

# Pressure and Density





Customer: **PDC**

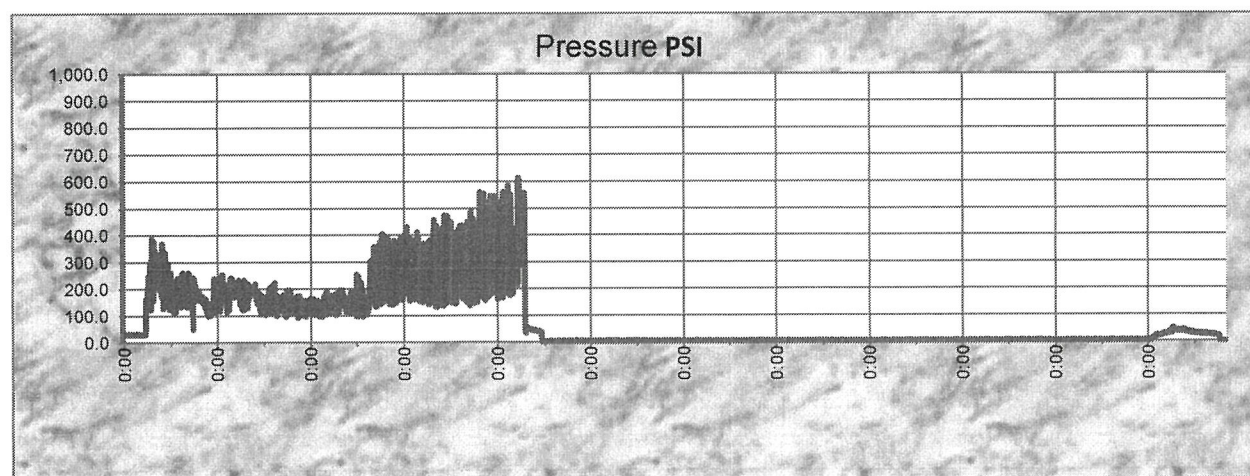
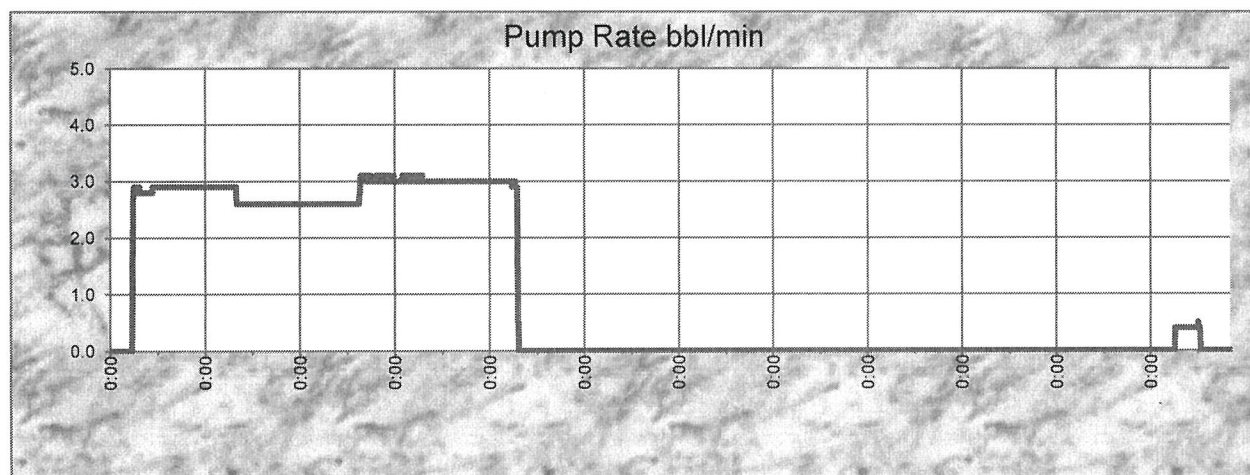
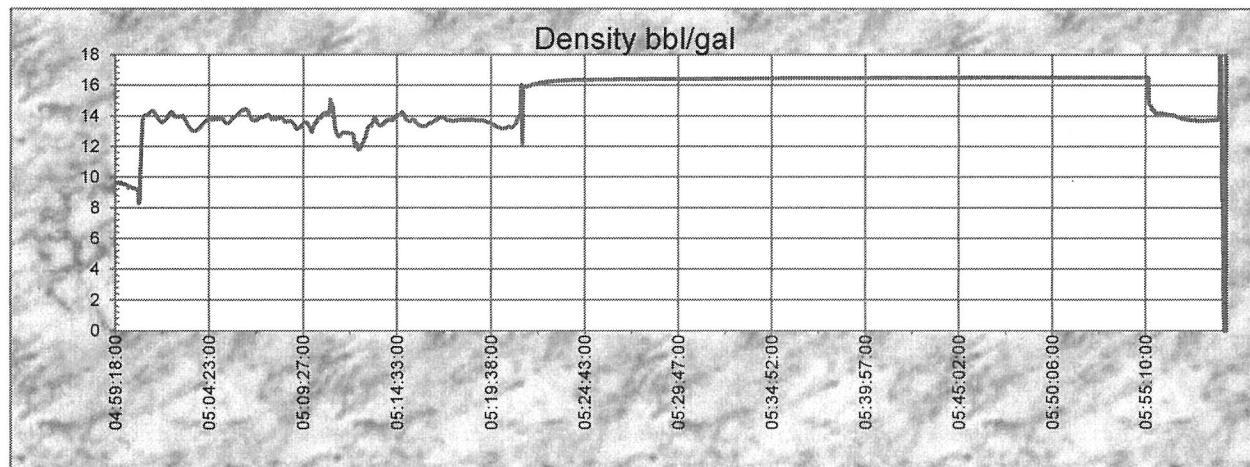
Job Date 6/15/2021

Location: Bruzewski 33-15F

Well name Bruzewski 33-15F

Job type: P&A

Ticket: 100316







Customer: **PDC**

Job Date 6-15-2021

Location: Bruzewski 33-15F

Well name Bruzewski 33-15F

Job type: P&A

Ticket: 100316

