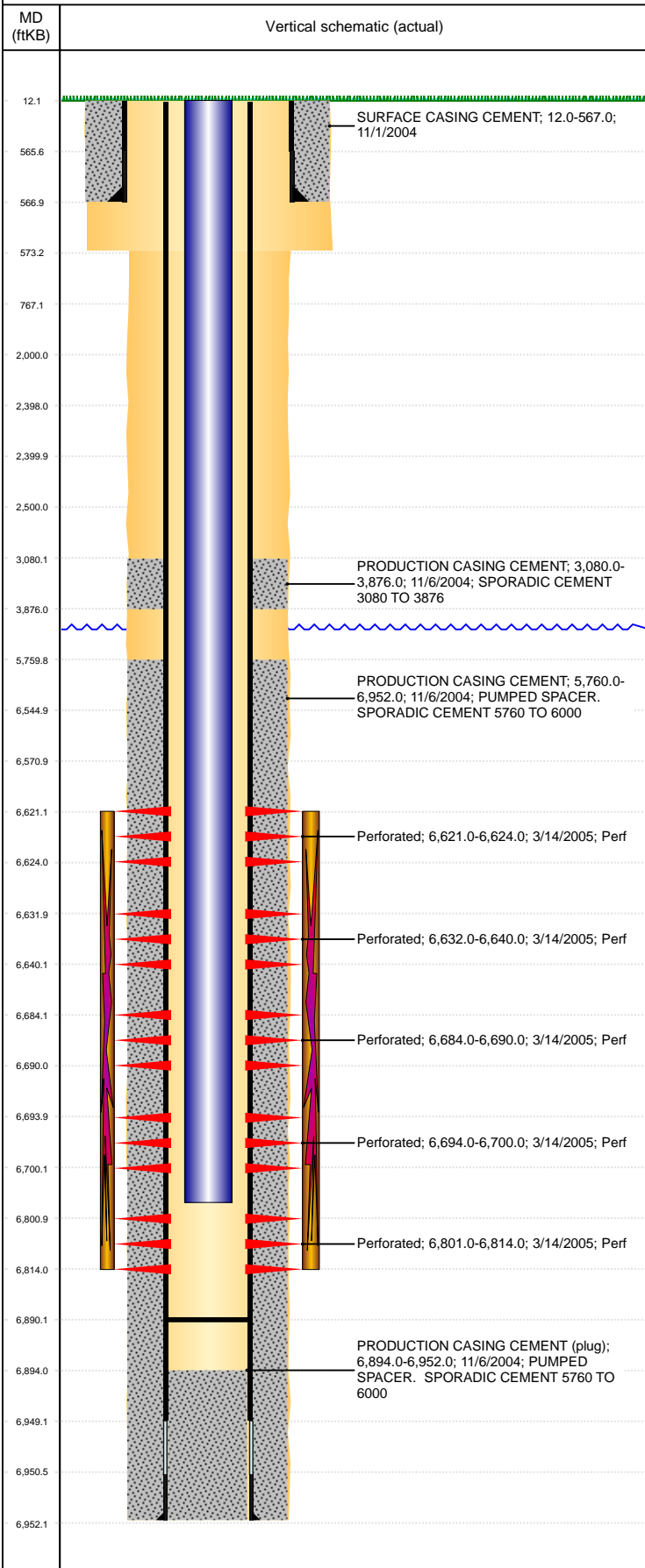


**Well Name: SHARKEY 42-35**

VERTICAL, ORIGINAL HOLE, 9/20/2021 11:03:10 AM



Well Header									
API 05-123-22428		Business Unit DJ BASIN			District 15		Well Config VERTICAL		
KB - GL / MSL (ft... 12.00		Spud Date 10/31/2004		P & A Date		Well Production Status PR			SoRT No
Comment DISCREPANCY: LOGS, ST &DRL RPTS SHOW TD @ 6950', PROD CSG SET AT @ 6952'. USED TD = 6952'.									
Surface Location (Congressional)									
Qtr 3 SE		Qtr 4 NE	Section 35	Twnshp 6	Twnsh... N	Range 64	Rng E/... W	Actual Latitude (°) 40.44468364	Actual Longitude (°) -104.50965509
Wellbore Sections									
Section Des			Size (in)			Act Top, MD (ftKB)		Act Btm, MD (ftKB)	
SURFACE			12 1/4			12		573	
PRODUCTION			7 7/8			573		6,952	
Casing Strings									
Csg Des			Run Date		OD (in)	Wt/Len (lb/ft)	Grade	Top, MD (ftKB)	MD (ftKB)
Surface			11/1/2004		8 5/8	24.00		12.0	567.0
Production			11/6/2004		4 1/2	11.60	N-80	12.0	6,952.0
Cement									
Des				Start Date		Top (ftKB)		Btm (ftKB)	
SURFACE CASING CEMENT				11/1/2004		12.0		567.0	
PRODUCTION CASING CEMENT				11/6/2004		3,080.0		3,876.0	
PRODUCTION CASING CEMENT				11/6/2004		5,760.0		6,952.0	
Zone Statuses									
Zone Name		Status Date	Status	Fluid Type	Job			Prod Method	
CODELL		3/17/2005	PR		DRILLING/COMPLETION - ORIGINAL, 10/31/200...				
NIOBRARA		3/17/2005	PR		DRILLING/COMPLETION - ORIGINAL, 10/31/200...				
Perforation Data									
Linked Zone			Bnch/Stg	Entered Shot Total	Top (ftKB)		Btm (ftKB)		Date
NIOBRARA, ORIGINAL HOLE				12	6,621.00		6,624.00		3/14/2005
NIOBRARA, ORIGINAL HOLE				32	6,632.00		6,640.00		3/14/2005
NIOBRARA, ORIGINAL HOLE				24	6,684.00		6,690.00		3/14/2005
NIOBRARA, ORIGINAL HOLE				24	6,694.00		6,700.00		3/14/2005
CODELL, ORIGINAL HOLE				52	6,801.00		6,814.00		3/14/2005
Stimulation Intervals									
Zone				Start Date		Top (ftKB)		Btm (ftKB)	
NIOBRARA-CODELL, ORIGINAL HOLE				3/15/2005		6,621.0		6,814.0	
Other In Hole									
Run Date		Des			Make		OD (in)	Top (ftKB)	Btm (ftKB)
Logs									
Date		Type				Top, MD (ftKB)		Btm, MD (ftKB)	
11/4/2004		TRIPLE COMBO				568.0		6,949.0	
11/11/2004		CBL/CCL/GR				2,900.0		6,889.0	
3/1/2011		GYRO				10.0		6,750.0	
Plug Back Total Depths									
Date		Type			Com				Depth (ftKB)
11/11/2004		FILL			DEPTH LOGGER ON CBL				6,894.0
4/25/2005		FILL			CLEAN OUT TO LAND TUBING				6,890.0