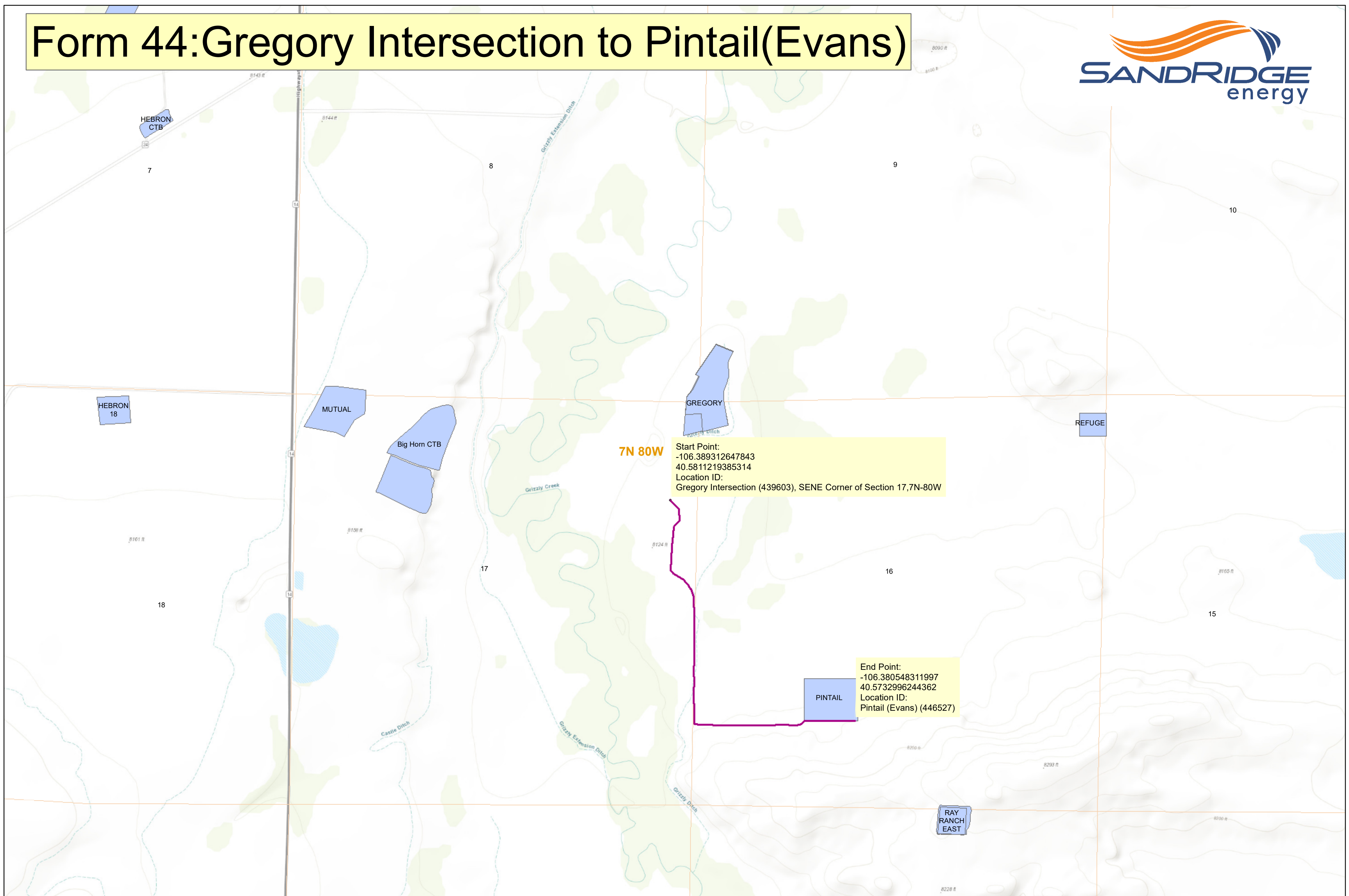


# Form 44:Gregory Intersection to Pintail(Evans)



Start Point:  
 -106.389312647843  
 40.5811219385314  
 Location ID:  
 Gregory Intersection (439603), SENE Corner of Section 17, 7N-80W

End Point:  
 -106.380548311997  
 40.5732996244362  
 Location ID:  
 Pintail (Evans) (446527)

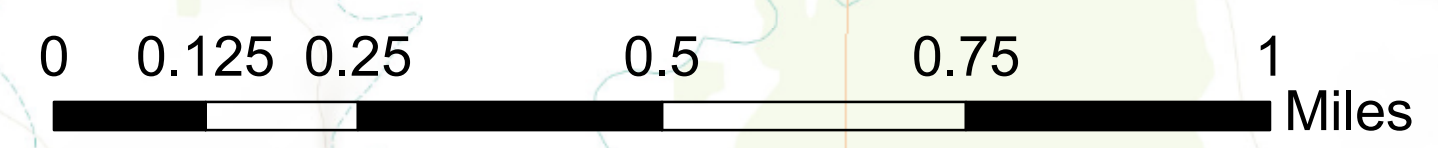
7N 80W

**Legend**

— Pipeline(s)

□ Facility Location

Material	Size	Pressure Rating MAOP	Product	COGCC Line Name
Poly	8	140	2 Phase- Produced Water + Crude Oil	Gregory Intersection to Pintail(Evans)



Esri, HERE, Garmin, (c) OpenStreetMap contributors, and the GIS user community, Sources: Esri, HERE, Garmin, Intermap, increment P Corp., GEBCO, USGS, FAO, NPS, NRCAN, GeoBase, IGN, Kadaster NL, Ordnance Survey, Esri Japan, METI, Esri China (Hong Kong), (c) OpenStreetMap contributors, and the GIS User Community