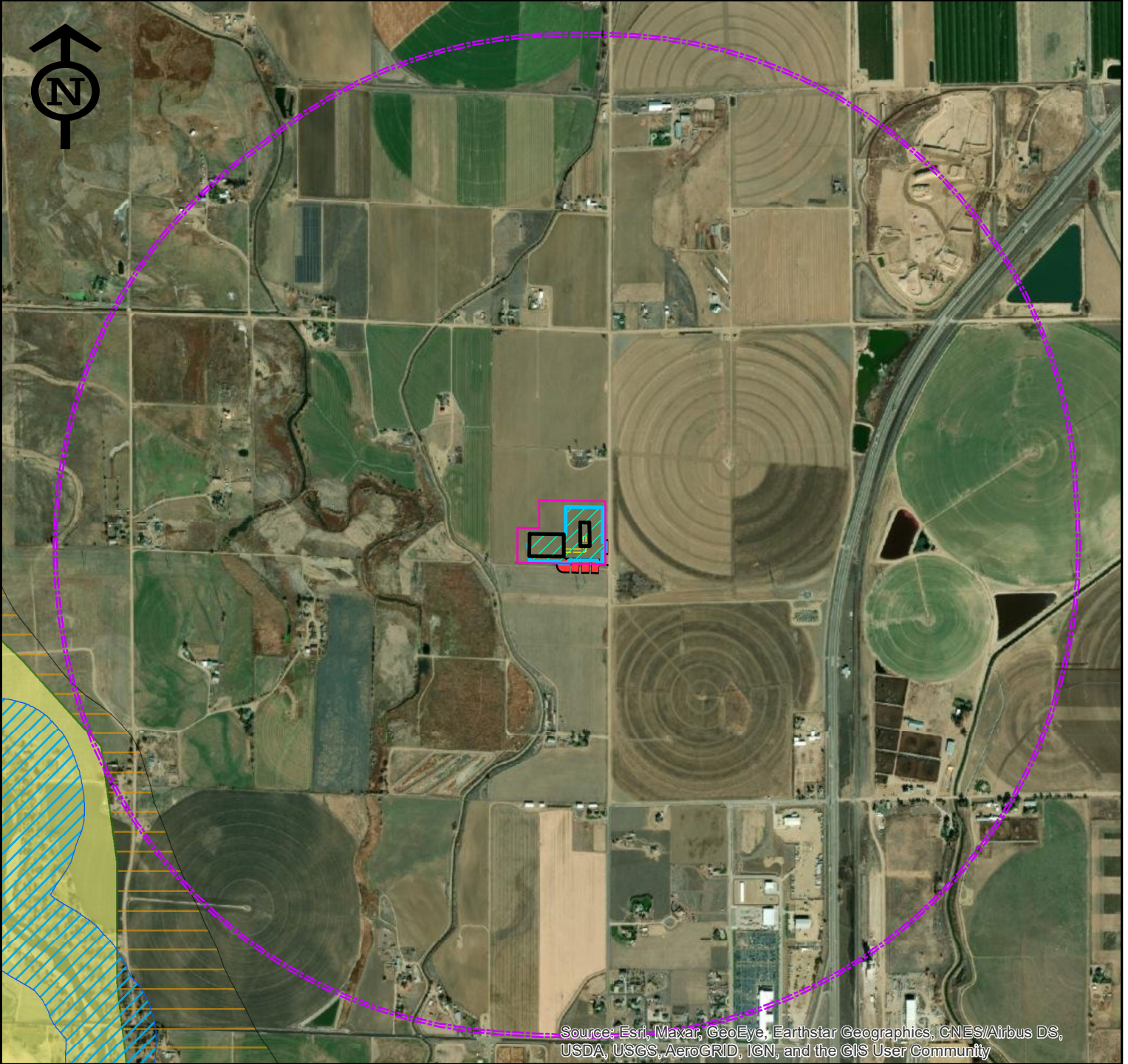


(602-111) DB Farms 40-12HZ

SECTION 12, TOWNSHIP 3N, RANGE 67W, 6TH P.M. WELD COUNTY, CO

Map Location: X:\APC\602_Preliminary\602-111 DB Farms 40-12HZ\Maps\Environmental Maps\602-111 DB Farms 40-12HZ_Fom2A_Map_05072021.mxd



Source: Esri, Maxar, GeoEye, Earthstar Geographics, CNES/Airbus DS, USDA, USGS, AeroGRID, IGN, and the GIS User Community

- | | |
|-------------------------------------|---|
| Disturbance Area | Aquatic Native Species Conservation Water |
| Production Facility | Mule Deer Migration Corridor |
| Flowlines | Mule Deer Severe Winter Range |
| Working Pad Surface | |
| Working Pad Surface One Mile Buffer | |
| Access Road | |

PREPARED BY:



7674 Grandview Ave., Ste. 210
Arvada, CO 80002

0 1,000 2,000
Feet

SOURCES:
Project Features, 2DOT 2021
and Kerr-McGee 2021.
Source Data Updated 2/2021

PREPARED FOR:



Projection: Nad83 UTM 13N Date: 7/15/2021
Drafted By: MC Reviewed By: SJ

Wildlife Habitat Drawing
Map

COGCC permit approved after 1/15/2021

GIS SPATIAL DATA SOURCE:

The Wildlife Habitat Drawing Map was developed to demonstrate the Colorado Parks and Wildlife (CPW) High Priority Habitat (HPH) within one mile of the proposed Working Pad Surface, in accordance with *COGCC Rule 304 b.(7)C*. The HPH data encompasses sensitive species habitat, as well as protected use areas designated by CPW. Colorado HPH data was obtained from CPW's public data sharing source, updated January, 2021:

<https://www.arcgis.com/home/search.html?q=Colorado%20Parks%20and%20Wildlife&t=groups&sortOrder=desc&sortField=relevance>