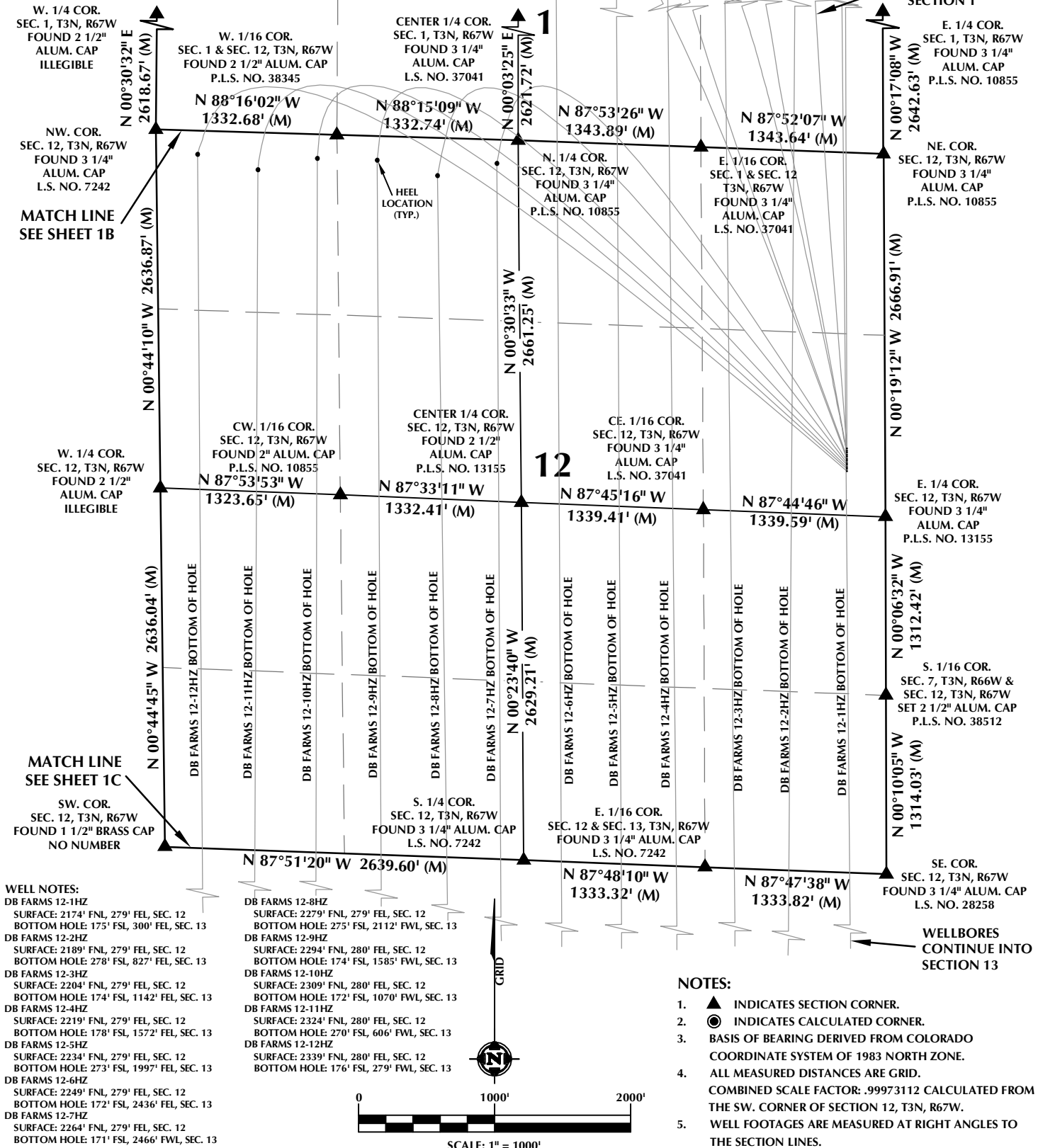


# DIRECTIONAL WELL PLAT SECTIONS 1 & 12, T3N, R67W

WELLBORES  
CONTINUE INTO  
SECTION 1



## WELL PAD - DB FARMS 40-12HZ

DIRECTIONAL WELL PLAT  
DB FARMS 12-1HZ, DB FARMS 12-2HZ,  
DB FARMS 12-3HZ, DB FARMS 12-4HZ,  
DB FARMS 12-5HZ, DB FARMS 12-6HZ,  
DB FARMS 12-7HZ, DB FARMS 12-8HZ,  
DB FARMS 12-9HZ, DB FARMS 12-10HZ,  
DB FARMS 12-11HZ & DB FARMS 12-12HZ  
LOCATED IN SECTIONS 1, 12 & 13  
T3N, R67W, 6TH P.M.  
WELD COUNTY, COLORADO

**Kerr-McGee Oil &  
Gas Onshore L.P.**  
1099 18th Street  
Denver, Colorado 80202



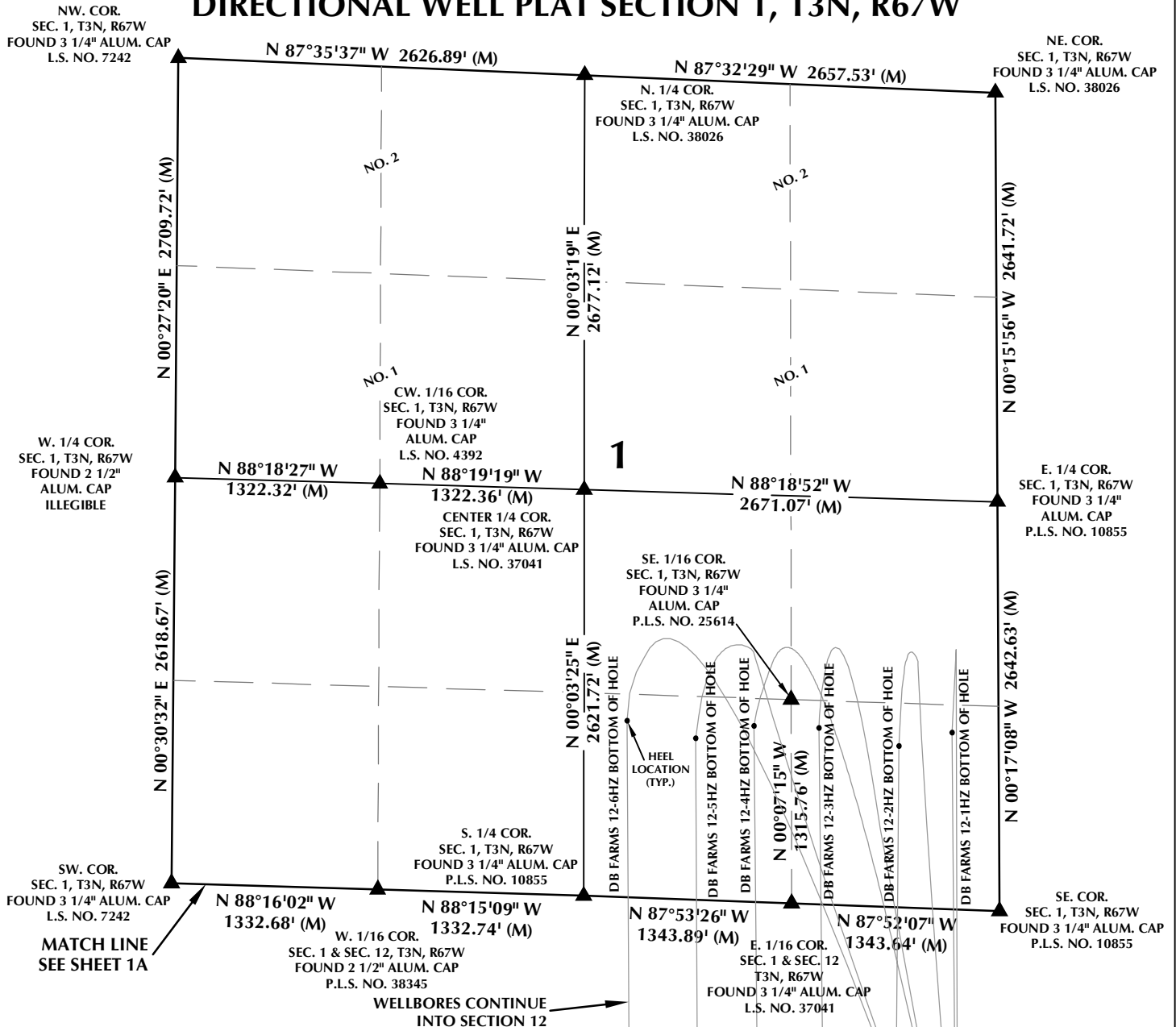
## CONSULTING, LLC

SHERIDAN OFFICE  
1095 Saberton Avenue  
Sheridan, Wyoming 82801  
Phone 307-674-0609

LOVELAND OFFICE  
6706 North Franklin Avenue  
Loveland, Colorado 80538  
Phone 970-776-4331

DRAFTED BY:	LMO	CHECKED BY:	RKF	SHEET NO:
DATE DRAFTED:	9/3/2020	DATE SURVEYED:	3/16/2020	1A
REVISED:	5/24/21	FILE NAME:	17-182	1A OF 1

# DIRECTIONAL WELL PLAT SECTION 1, T3N, R67W



## WELL NOTES:

DB FARMS 12-1HZ  
SURFACE: 2174' FNL, 279' FEL, SEC. 12  
BOTTOM HOLE: 175' FSL, 300' FEL, SEC. 13

DB FARMS 12-2HZ  
SURFACE: 2189' FNL, 279' FEL, SEC. 12  
BOTTOM HOLE: 278' FSL, 827' FEL, SEC. 13

DB FARMS 12-3HZ  
SURFACE: 2204' FNL, 279' FEL, SEC. 12  
BOTTOM HOLE: 174' FSL, 1142' FEL, SEC. 13

DB FARMS 12-4HZ  
SURFACE: 2219' FNL, 279' FEL, SEC. 12  
BOTTOM HOLE: 178' FSL, 1572' FEL, SEC. 13

DB FARMS 12-5HZ  
SURFACE: 2234' FNL, 279' FEL, SEC. 12  
BOTTOM HOLE: 273' FSL, 1997' FEL, SEC. 13

DB FARMS 12-6HZ  
SURFACE: 2249' FNL, 279' FEL, SEC. 12  
BOTTOM HOLE: 172' FSL, 2436' FEL, SEC. 13

DB FARMS 12-7HZ  
SURFACE: 2264' FNL, 279' FEL, SEC. 12  
BOTTOM HOLE: 171' FSL, 2466' FWL, SEC. 13

DB FARMS 12-8HZ  
SURFACE: 2279' FNL, 279' FEL, SEC. 12  
BOTTOM HOLE: 275' FSL, 2112' FWL, SEC. 13

DB FARMS 12-9HZ  
SURFACE: 2294' FNL, 280' FEL, SEC. 12  
BOTTOM HOLE: 174' FSL, 1585' FWL, SEC. 13

DB FARMS 12-10HZ  
SURFACE: 2309' FNL, 280' FEL, SEC. 12  
BOTTOM HOLE: 172' FSL, 1070' FWL, SEC. 13

DB FARMS 12-11HZ  
SURFACE: 2324' FNL, 280' FEL, SEC. 12  
BOTTOM HOLE: 270' FSL, 606' FWL, SEC. 13

DB FARMS 12-12HZ  
SURFACE: 2339' FNL, 280' FEL, SEC. 12  
BOTTOM HOLE: 176' FSL, 279' FWL, SEC. 13

## NOTES:

- ▲ INDICATES SECTION CORNER.
- INDICATES CALCULATED CORNER.
- BASIS OF BEARING DERIVED FROM COLORADO COORDINATE SYSTEM OF 1983 NORTH ZONE.
- ALL MEASURED DISTANCES ARE GRID.
- COMBINED SCALE FACTOR: .99973112 CALCULATED FROM THE SW. CORNER OF SECTION 12, T3N, R67W.
- WELL FOOTAGES ARE MEASURED AT RIGHT ANGLES TO THE SECTION LINES.
- NO. 1 & NO. 2 AS SHOWN HEREON ARE GOVERNMENT LOTS 1 & 2 PER THE ORIGINAL GLO SURVEY.

## WELL PAD - DB FARMS 40-12HZ

DIRECTIONAL WELL PLAT  
DB FARMS 12-1HZ, DB FARMS 12-2HZ,  
DB FARMS 12-3HZ, DB FARMS 12-4HZ,  
DB FARMS 12-5HZ, DB FARMS 12-6HZ,  
DB FARMS 12-7HZ, DB FARMS 12-8HZ,  
DB FARMS 12-9HZ, DB FARMS 12-10HZ,  
DB FARMS 12-11HZ & DB FARMS 12-12HZ  
LOCATED IN SECTIONS 1, 12 & 13  
T3N, R67W, 6TH P.M.  
WELD COUNTY, COLORADO

**Kerr-McGee Oil &  
Gas Onshore L.P.**  
1099 18th Street  
Denver, Colorado 80202



## CONSULTING, LLC

SHERIDAN OFFICE  
1095 Saberton Avenue  
Sheridan, Wyoming 82801  
Phone 307-674-0609

LOVELAND OFFICE  
6706 North Franklin Avenue  
Loveland, Colorado 80538  
Phone 970-776-4331

DRAFTED BY:	LMO	CHECKED BY:	RKF	SHEET NO:
DATE DRAFTED:	9/3/2020	DATE SURVEYED:	3/16/2020	<b>1B</b>
REVISED:	5/24/21	FILE NAME:	17-182	1B OF 1

MATCH LINE  
SEE SHEET 1A

# DIRECTIONAL WELL PLAT SECTION 13, T3N, R67W

NW. COR.  
SEC. 13, T3N, R67W  
FOUND 1 1/2" BRASS CAP  
NO NUMBER

N 87°51'20" W 2639.60' (M)

N 87°48'10" W  
1333.32' (M)

N 87°47'38" W  
1333.82' (M)

NE. COR.  
SEC. 13, T3N, R67W  
FOUND 3 1/4" ALUM. CAP  
L.S. NO. 28258

N. 1/4 COR.  
SEC. 13, T3N, R67W  
FOUND 3 1/4" ALUM. CAP  
L.S. NO. 7242

E. 1/16 COR.  
SEC. 12 & SEC. 13  
T3N, R67W  
FOUND 3 1/4" ALUM. CAP  
L.S. NO. 7242

N 01°20'10" W 2700.68' (M)

N 00°27'14" W  
2671.47' (M)

CENTER 1/4 COR.  
SEC. 13, T3N, R67W  
FOUND 3 1/4" ALUM. CAP  
L.S. NO. 7242

13

CE. 1/16 COR.  
SEC. 13, T3N, R67W  
FOUND 3 1/4" ALUM. CAP  
L.S. NO. 7242

E. 1/4 COR.  
SEC. 13, T3N, R67W  
FOUND 3 1/4" ALUM. CAP  
L.S. NO. 34995

W. 1/4 COR.  
SEC. 13, T3N, R67W  
FOUND 3 1/4" ALUM. CAP  
L.S. NO. 7242

N 88°27'03" W  
2596.89' (M)

N 88°30'38" W  
1327.12' (M)

N 88°30'30" W  
1325.08' (M)

N 00°45'26" E 2603.46' (M)

N 00°27'12" W  
2605.76' (M)

N 01°40'54" W 2642.20' (M)

SW. COR.  
SECS. 13, T3N, R67W  
FOUND 3 1/4" ALUM. CAP  
W.C. 550' SOUTH OF TRUE  
CORNER POSITION  
L.S. NO. 22098  
FOUND 3 1/4" ALUM. CAP  
W.C. 300' WEST OF TRUE  
CORNER POSITION  
L.S. NO. 38106

N 88°25'48" W 2651.97' (M)

S. 1/4 COR.  
SEC. 13, T3N, R67W  
FOUND 2 1/2" ALUM. CAP  
L.S. NO. 25385

N 87°35'53" W  
1355.15' (M)

E. 1/16 COR.  
SEC. 13 & SEC. 24  
T3N, R67W  
FOUND 3 1/4" ALUM. CAP  
L.S. NO. 34995

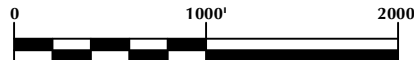
SE. COR.  
SEC. 13, T3N, R67W  
FOUND 3 1/4" ALUM. CAP  
L.S. NO. 34995

## WELL NOTES:

DB FARMS 12-1HZ  
SURFACE: 2174' FNL, 279' FEL, SEC. 12  
BOTTOM HOLE: 175' FSL, 300' FEL, SEC. 13  
DB FARMS 12-2HZ  
SURFACE: 2189' FNL, 279' FEL, SEC. 12  
BOTTOM HOLE: 278' FSL, 827' FEL, SEC. 13  
DB FARMS 12-3HZ  
SURFACE: 2204' FNL, 279' FEL, SEC. 12  
BOTTOM HOLE: 174' FSL, 1142' FEL, SEC. 13  
DB FARMS 12-4HZ  
SURFACE: 2219' FNL, 279' FEL, SEC. 12  
BOTTOM HOLE: 178' FSL, 1572' FEL, SEC. 13  
DB FARMS 12-5HZ  
SURFACE: 2234' FNL, 279' FEL, SEC. 12  
BOTTOM HOLE: 273' FSL, 1997' FEL, SEC. 13  
DB FARMS 12-6HZ  
SURFACE: 2249' FNL, 279' FEL, SEC. 12  
BOTTOM HOLE: 172' FSL, 2436' FEL, SEC. 13  
DB FARMS 12-7HZ  
SURFACE: 2264' FNL, 279' FEL, SEC. 12  
BOTTOM HOLE: 171' FSL, 2466' FWL, SEC. 13

DB FARMS 12-8HZ  
SURFACE: 2279' FNL, 279' FEL, SEC. 12  
BOTTOM HOLE: 275' FSL, 2112' FWL, SEC. 13  
DB FARMS 12-9HZ  
SURFACE: 2294' FNL, 280' FEL, SEC. 12  
BOTTOM HOLE: 174' FSL, 1585' FWL, SEC. 13  
DB FARMS 12-10HZ  
SURFACE: 2309' FNL, 280' FEL, SEC. 12  
BOTTOM HOLE: 172' FSL, 1070' FWL, SEC. 13  
DB FARMS 12-11HZ  
SURFACE: 2324' FNL, 280' FEL, SEC. 12  
BOTTOM HOLE: 270' FSL, 606' FWL, SEC. 13  
DB FARMS 12-12HZ  
SURFACE: 2339' FNL, 280' FEL, SEC. 12  
BOTTOM HOLE: 176' FSL, 279' FWL, SEC. 13

GRID



SCALE: 1" = 1000'

## NOTES:

- ▲ INDICATES SECTION CORNER.
- INDICATES CALCULATED CORNER.
- BASIS OF BEARING DERIVED FROM COLORADO COORDINATE SYSTEM OF 1983 NORTH ZONE.
- ALL MEASURED DISTANCES ARE GRID.
- COMBINED SCALE FACTOR: .99973112 CALCULATED FROM THE SW. CORNER OF SECTION 12, T3N, R67W.
- WELL FOOTAGES ARE MEASURED AT RIGHT ANGLES TO THE SECTION LINES.

## WELL PAD - DB FARMS 40-12HZ

DIRECTIONAL WELL PLAT  
DB FARMS 12-1HZ, DB FARMS 12-2HZ,  
DB FARMS 12-3HZ, DB FARMS 12-4HZ,  
DB FARMS 12-5HZ, DB FARMS 12-6HZ,  
DB FARMS 12-7HZ, DB FARMS 12-8HZ,  
DB FARMS 12-9HZ, DB FARMS 12-10HZ,  
DB FARMS 12-11HZ & DB FARMS 12-12HZ  
LOCATED IN SECTIONS 1, 12 & 13  
T3N, R67W, 6TH P.M.  
WELD COUNTY, COLORADO

**Kerr-McGee Oil &  
Gas Onshore L.P.**

1099 18th Street  
Denver, Colorado 80202



## CONSULTING, LLC

SHERIDAN OFFICE  
1095 Saberton Avenue  
Sheridan, Wyoming 82801  
Phone 307-674-0609

LOVELAND OFFICE  
6706 North Franklin Avenue  
Loveland, Colorado 80538  
Phone 970-776-4331

DRAFTED BY: LMO

CHECKED BY: RKF

SHEET NO:

DATE DRAFTED: 9/3/2020

DATE SURVEYED: 3/16/2020

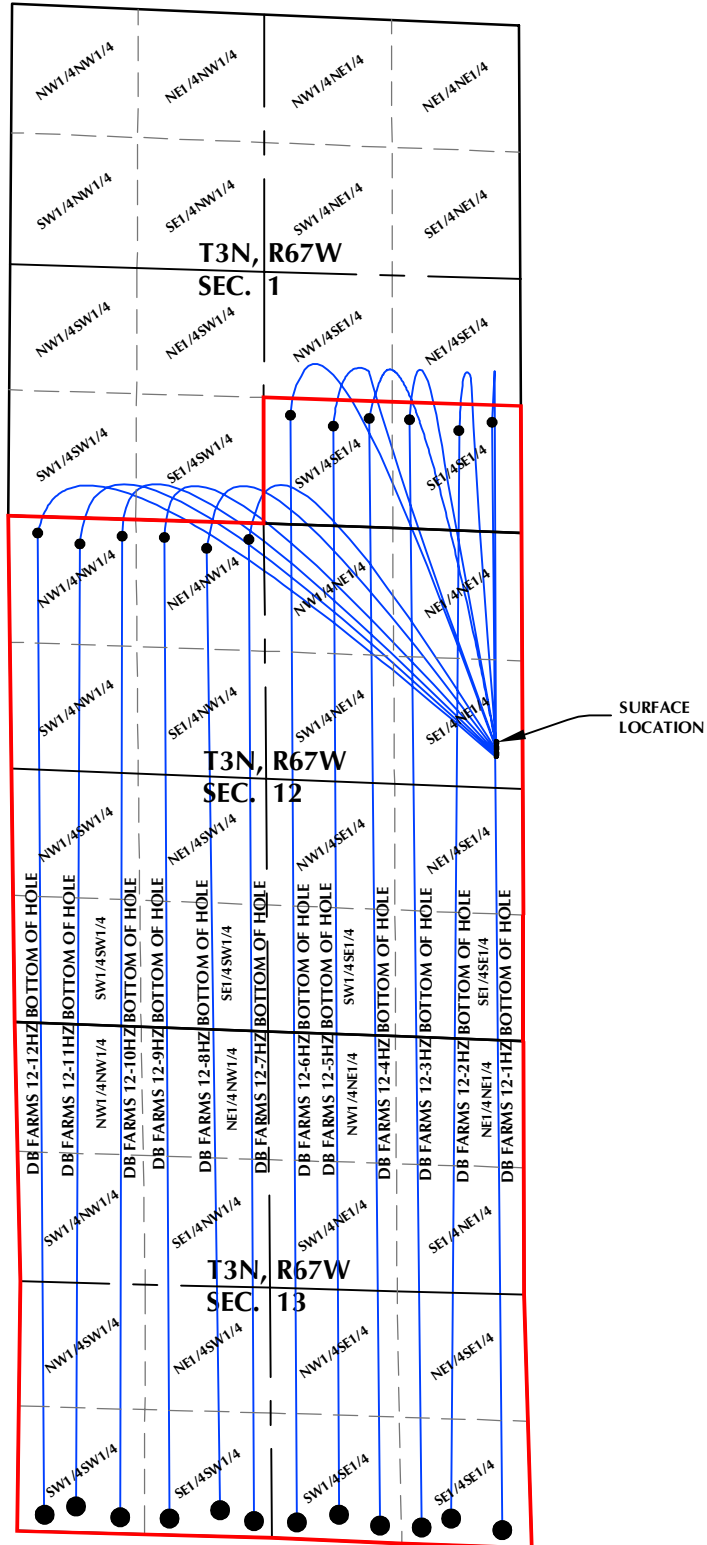
1C

REVISED: 5/24/21

FILE NAME: 17-182

1C OF 1

# DB FARMS 40-12HZ DIRECTIONAL WELL PLAT



## WELL PAD - DB FARMS 40-12HZ

DIRECTIONAL WELL PLAT  
DB FARMS 12-1HZ, DB FARMS 12-2HZ,  
DB FARMS 12-3HZ, DB FARMS 12-4HZ,  
DB FARMS 12-5HZ, DB FARMS 12-6HZ,  
DB FARMS 12-7HZ, DB FARMS 12-8HZ,  
DB FARMS 12-9HZ, DB FARMS 12-10HZ,  
DB FARMS 12-11HZ & DB FARMS 12-12HZ  
LOCATED IN SECTIONS 1, 12 & 13  
T3N, R67W, 6TH P.M.  
WELD COUNTY, COLORADO

**Kerr-McGee Oil &  
Gas Onshore L.P.**  
1099 18th Street  
Denver, Colorado 80202



## CONSULTING, LLC

SHERIDAN OFFICE  
1095 Saberton Avenue  
Sheridan, Wyoming 82801  
Phone 307-674-0609

LOVELAND OFFICE  
6706 North Franklin Avenue  
Loveland, Colorado 80538  
Phone 970-776-4331

DRAFTED BY: SJM	CHECKED BY: RKF	SHEET NO: 1D
DATE DRAFTED: 5/24/21	DATE SURVEYED: 3/16/2020	1D OF 1
REVISED:	FILE NAME: 17-182	

# DIRECTIONAL WELL PLAT SECTIONS 1, 12 & 13, T3N, R67W

## WELL NOTES:

### DB FARMS 12-1HZ

SURFACE: 2174' FNL, 279' FEL, SEC. 12

BOTTOM HOLE: 175' FSL, 300' FEL, SEC. 13

### DB FARMS 12-2HZ

SURFACE: 2189' FNL, 279' FEL, SEC. 12

BOTTOM HOLE: 278' FSL, 827' FEL, SEC. 13

### DB FARMS 12-3HZ

SURFACE: 2204' FNL, 279' FEL, SEC. 12

BOTTOM HOLE: 174' FSL, 1142' FEL, SEC. 13

### DB FARMS 12-4HZ

SURFACE: 2219' FNL, 279' FEL, SEC. 12

BOTTOM HOLE: 178' FSL, 1572' FEL, SEC. 13

### DB FARMS 12-5HZ

SURFACE: 2234' FNL, 279' FEL, SEC. 12

BOTTOM HOLE: 273' FSL, 1997' FEL, SEC. 13

### DB FARMS 12-6HZ

SURFACE: 2249' FNL, 279' FEL, SEC. 12

BOTTOM HOLE: 172' FSL, 2436' FEL, SEC. 13

### DB FARMS 12-7HZ

SURFACE: 2264' FNL, 279' FEL, SEC. 12

BOTTOM HOLE: 171' FSL, 2466' FWL, SEC. 13

### DB FARMS 12-8HZ

SURFACE: 2279' FNL, 279' FEL, SEC. 12

BOTTOM HOLE: 275' FSL, 2112' FWL, SEC. 13

### DB FARMS 12-9HZ

SURFACE: 2294' FNL, 280' FEL, SEC. 12

BOTTOM HOLE: 174' FSL, 1585' FWL, SEC. 13

### DB FARMS 12-10HZ

SURFACE: 2309' FNL, 280' FEL, SEC. 12

BOTTOM HOLE: 172' FSL, 1070' FWL, SEC. 13

### DB FARMS 12-11HZ

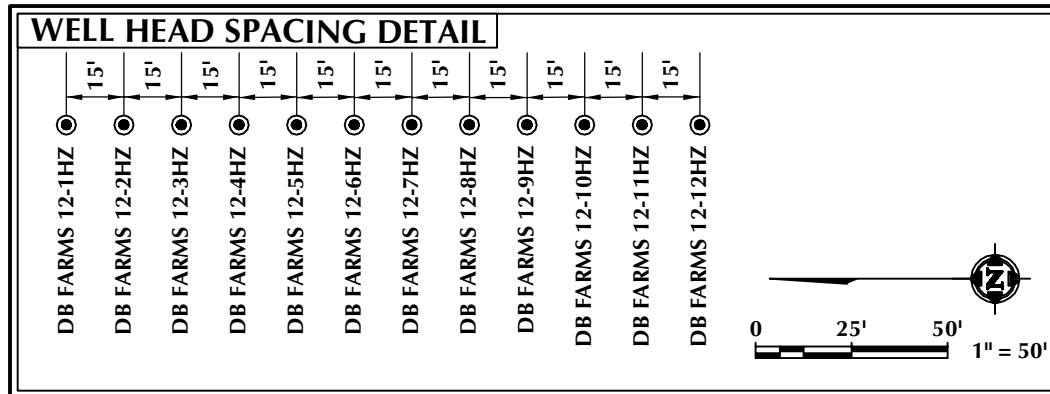
SURFACE: 2324' FNL, 280' FEL, SEC. 12

BOTTOM HOLE: 270' FSL, 606' FWL, SEC. 13

### DB FARMS 12-12HZ

SURFACE: 2339' FNL, 280' FEL, SEC. 12

BOTTOM HOLE: 176' FSL, 279' FWL, SEC. 13



## WELL PAD - DB FARMS 40-12HZ

### DIRECTIONAL WELL PLAT

DB FARMS 12-1HZ, DB FARMS 12-2HZ,  
DB FARMS 12-3HZ, DB FARMS 12-4HZ,  
DB FARMS 12-5HZ, DB FARMS 12-6HZ,  
DB FARMS 12-7HZ, DB FARMS 12-8HZ,  
DB FARMS 12-9HZ, DB FARMS 12-10HZ,  
DB FARMS 12-11HZ & DB FARMS 12-12HZ

LOCATED IN SECTIONS 1, 12 & 13

T3N, R67W, 6TH P.M.

WELD COUNTY, COLORADO

**Kerr-McGee Oil &  
Gas Onshore L.P.**

1099 18th Street  
Denver, Colorado 80202



## CONSULTING, LLC

SHERIDAN OFFICE  
1095 Saberton Avenue  
Sheridan, Wyoming 82801  
Phone 307-674-0609

LOVELAND OFFICE  
6706 North Franklin Avenue  
Loveland, Colorado 80538  
Phone 970-776-4331

DRAFTED BY:	SJM	CHECKED BY:	RKF	SHEET NO:
DATE DRAFTED:	8/4/21	DATE SURVEYED:	3/16/2020	<b>1E</b>
REVISED:		FILE NAME:	17-182	1E OF 1