

Location: Near CR 25 and CR 34

Address: 16545 CR 25

SITE SAFETY AND EMERGENCY ACTION PLAN

December 2020



1099 18th Street, Suite 1800
Denver, Colorado 80202

DB Farms 40-12HZ Wells and Facility

Section 12 – T3N – R67W

WELD COUNTY, COLORADO

Proposed Spud Date: 3rd Quarter 2021

Table of Contents

Section 1 - Signature Page

Section 2 - Site Specific Information

- a.** Site Safety Requirements and General Information
- b.** Emergency Muster/Assembly Point(s)
- c.** 911 Address and GPS Coordinates
- d.** Site Description
- e.** Nearby Schools and other areas of interest
- f.** Directions to Project Locations
- g.** Location of SDS Sheets, Sign-in sheets, JSA, Safety Forms

Section 3 – Maps & Document

- a.** Site Map
 - i. 1,000 Foot Buffer Map
 - ii. Project Access Map
 - iii. 2,500 Foot Buffer Area Map

Section 4 - List of Emergency Contacts

- a.** Energy Company
- b.** Energy Company community/media relations
- c.** First Responders
- d.** Regulatory Contact
- e.** Nearest Medical Facilities
- f.** Spill Response Organization
- g.** Fire, Explosion associated with loss of well control
- h.** Government Agencies
- i.** Railroad Emergency

Section 5 - Spill Response and Clean Up

- a.** Spill Response
- b.** Spill Reporting

Section 6 – Reportable Storage Quantity's



- a.** Reportable Quantities
- b.** Tier II Reporting

Section 7 - Evacuation Information

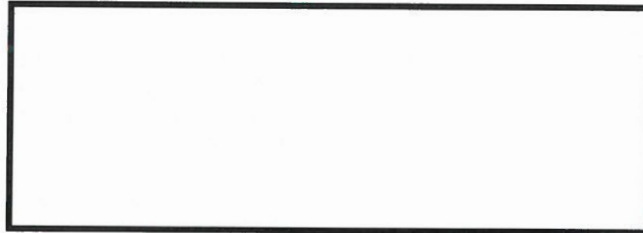
- a.** Evacuation Plan Procedures (public)

Section 8 - Coordination with First Responder Agencies

SECTION 1
SIGNATURE PAGE

Kerr McGee Oil & Gas OnShore LP			
Name	Signature	Title	Date
Brent Naherny	<small>DocuSigned by:</small>  <small>D81BF2E6EAE74CF...</small>	Director Operations	12/8/2020
Platteville-Gilcrest Fire Protection District			
Name	Signature	Title	Date
Jeff Cogburn		Fire Prevention Specialist	01-14-2021

Weld County Office of Emergency Management
Digitally Signed



SECTION 2
SITE SPECIFIC INFORMATION

a.) Site Safety Requirements and General Information

The minimum personal protective equipment (PPE) to enter any Kerr McGee Oil & Gas OnShore LP (KMOG) production location includes hard hat, safety glasses, safety toe boots, fire resistant clothing (FRC), and a 4-gas monitor. All contractors and visitors are responsible for providing their employees with the appropriate training on and use of PPE while on KMOG locations. In addition, all contract personnel entering a KMOG location to perform work must understand and abide by KMOG's contractor expectations relating to environmental, health, and safety requirements.

The primary hazards that any person must be aware of while on an KMOG production location include, but are not limited to, the potential for release of hydrocarbon gases and/or liquids from production equipment/tanks, heavy truck and equipment traffic, loud noise, high pressures, and the potential for a flash fire. These hazards can vary depending on the work being performed.

b.) Emergency Muster/Assembly point(s)

Muster points will be identified during safety briefings.

c.) 911 Address and GPS coordinates

API#- Pending COGCC Permit Approval

Legal Description – SENE Section 12, Township 3 North, Range 67 West

Address – 16545 CR 25

Town, CO Zip – Weld County, Colorado

GPS Coordinates for Well Pad: LAT: 40.240278°, LONG: -104.830866°

GPS Coordinates for Access Roads: LAT: 40.239646°, LONG:
-104.829919°

d.) Site Description

The DB Farms 40-12HZ Well pad and facility will have twelve (12) horizontal oil and gas wells along with 0 - crude oil storage tanks and 4 – 285-barrel produced water tanks, and 1 – 285-barrel condensate tank located inside a lined secondary containment structure.

e.) Nearby Schools and other areas of interest

None within 2,500 feet of location.

f.) Directions to Project Locations

DB Farms 40-12HZ Well pad and facility

FROM THE INTERSECTION OF State Highway 85 and Weld County Road (WCR) 34 travel west to WCR 25. Turn right (north) and travel half of a mile to the lease access road, turn left (west) and proceed to the well pad and production facility.

g.) Location of SDS sheets, Sign-In Sheets, JSAs, and Safety Forms

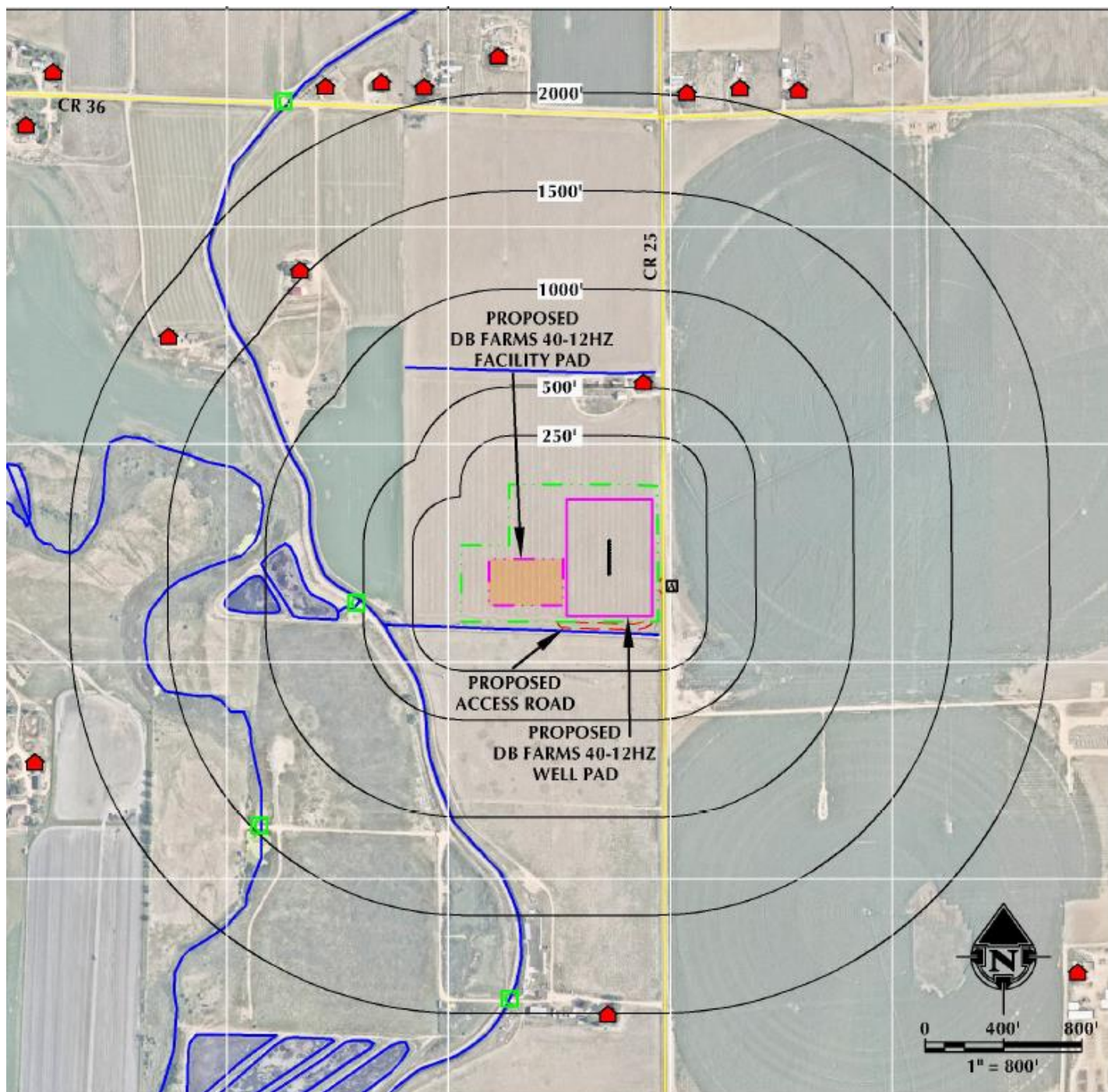
Depending on the operations taking place on location, the chemicals that may be present will vary. Regardless, hazard communication is a critical safety measure and Safety Data Sheets (SDS's) will be available from the Company Representative present or the contractor performing work on location.

- Well pad - During drilling operations all employees, contractors and visitors are required to check in with the rig consultant and sign in at the trailer.
- Well pad - During completions operations there are multiple methods of accounting for personnel. Fracture stimulation operations have a gate guard for sign in/out. During preparation, coil workover and flowback operations mailbox contains a sign in/out log.
- Production facility - During construction operations each contractor is responsible for accountability for their personnel. JSAs with muster points identified and all personnel signed in on will be available for accountability.

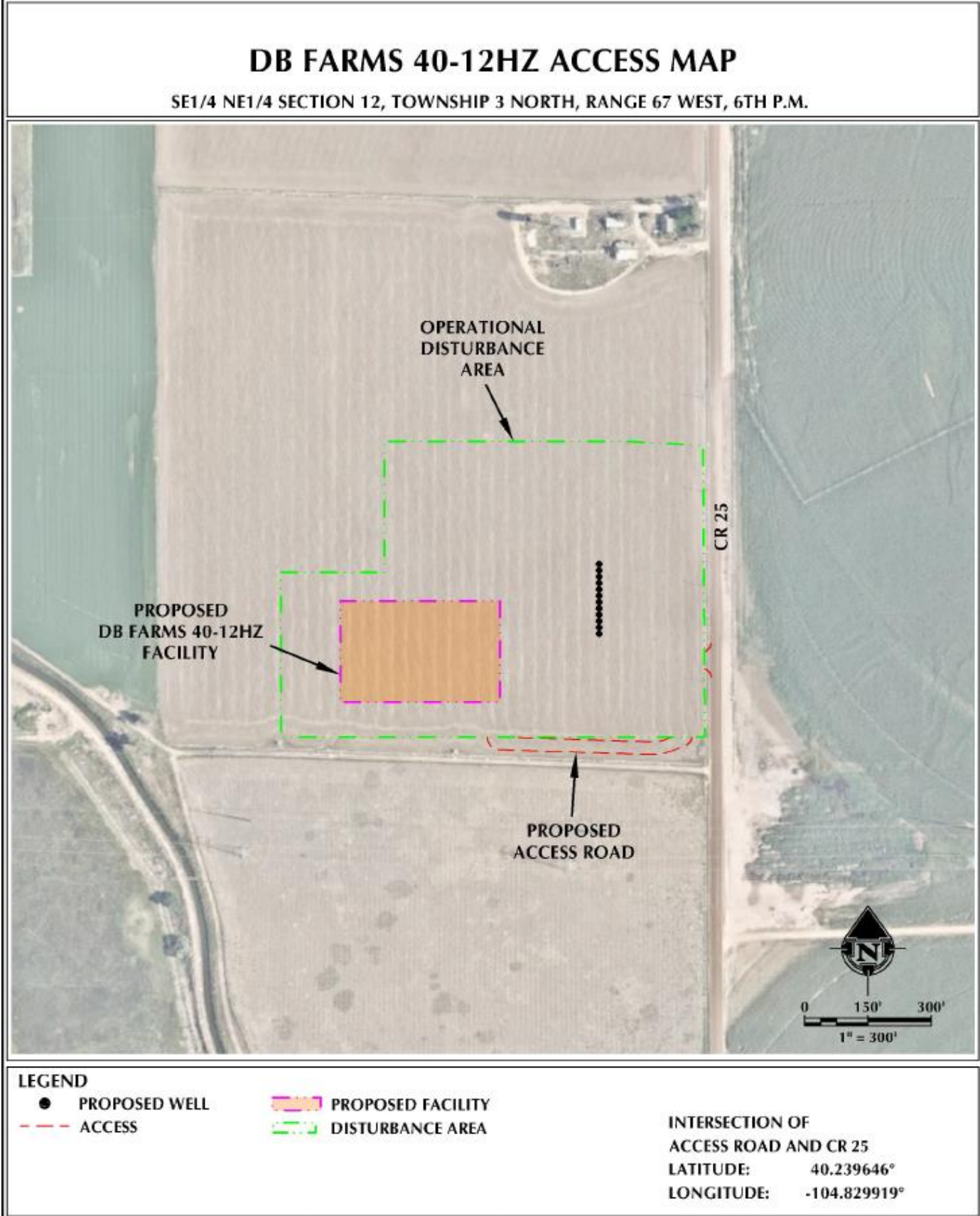
Once drilling and completion activities are finalized, the site will transition to its production phase and no unauthorized personnel will be allowed on location without first contacting a company representative. At this point, the primary chemicals stored on site will be crude oil and produced water.

SECTION 3
PROJECT AREA MAPS

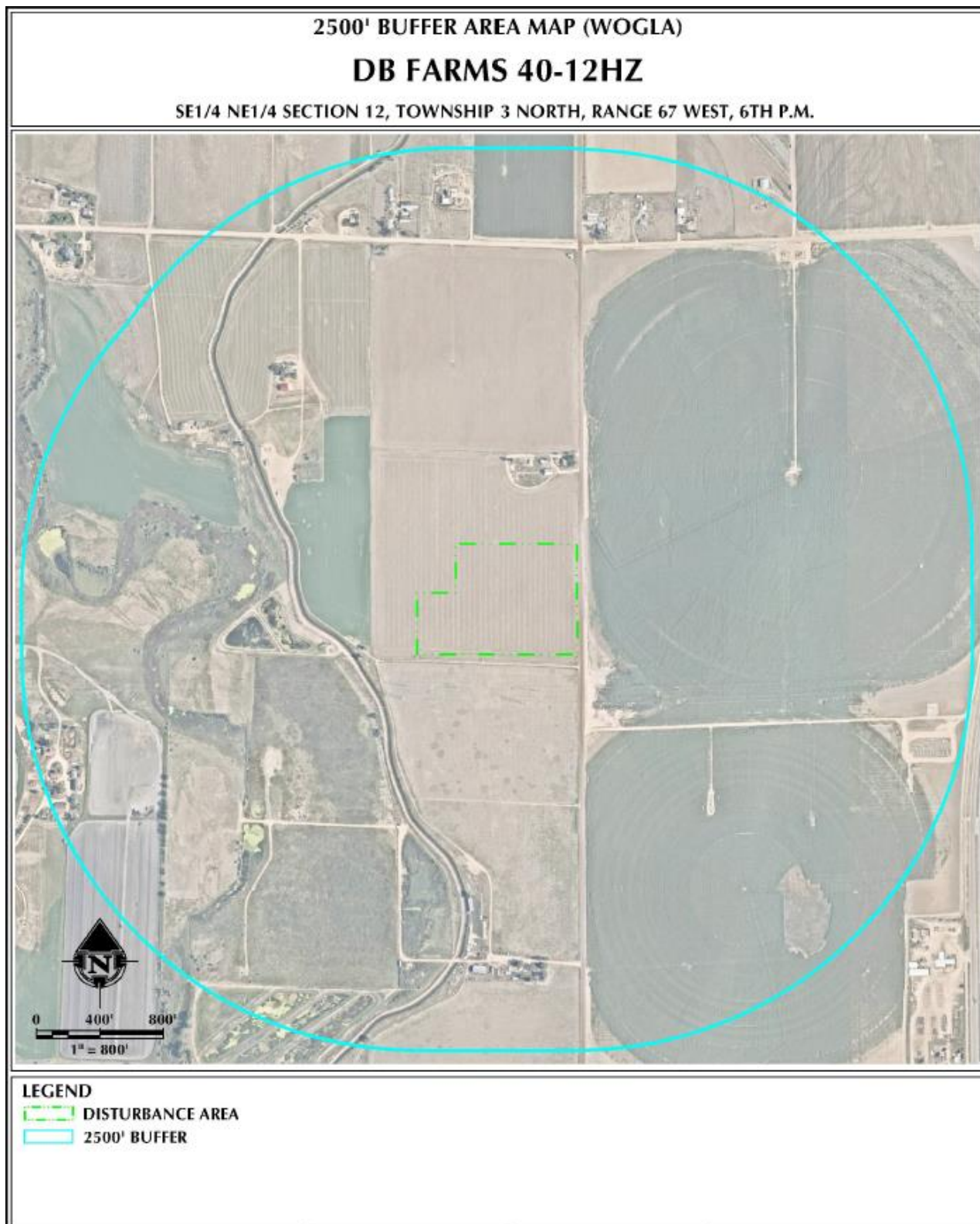
1,000 ft. Foot Buffer Map



Project Access Map



2,500 Foot Buffer Area Map



SECTION 4
LIST OF EMERGENCY CONTACTS

a.) Energy Company

Name	Office Phone	Emergency/Cell
Kerr McGee Integrated Operations Center (IOC)	970-506-5980	N/A

b.) Energy Company community/media relations

Name	Office	Cell Phone
Kerr McGee Colorado Response Line	866-248-9577	N/A
Kerr McGee Public Affairs	832-636-8736	N/A

c.) First Responders

Name	Emergency	Office Number
Platteville-Gilcrest Fire Protection District	911	970-785-2232
Weld County Sheriff	911	970-356-4015
Colorado State Highway Patrol	911	970-506-4999

d.) Regulatory Contacts

Name	Office Phone
COGCC	303-894-2100
CDPHE	877-518-5608
Colorado Parks & Wildlife	303-291-7227
National Response Center	800-424-8802

e.) Medical Facilities

Name	Office Phone
Northern Colorado Medical Center	970-352-4121
Medical Center of the Rockies	970-624-2500

f.) Spill Response Organization

Name	Office Phone	Alternative #
Platteville-Gilcrest Fire Protection District	970-785-2232	
EnviroServe	800-488-0910	720-450-1316 Mobile
EHA – Environmental HAZMAT Services	720-225-9252	303-525-3111 Mobile
Wild Well Control	281-784-4700	
Boots & Coots	281-931-8884	
Cudd Pressure Control	800-990-2833	307-382-6650 and 713-849-

		2769
--	--	------

g.) Fire, explosion, associated with loss of well control

Name	Office Phone
Platteville-Gilcrest Fire Protection District	970-785-2232
Wild Well Control, Inc.	281-353-5481
Weld County Office of Emergency Management (Roy Rudisill – Director)	970-304-6540

h.) Government Agencies

Name	Office Phone
Weld County Sheriff's Office	911 or 970-356-4015
COGCC	303-894-2100
CDPHE	877-518-5608
Weld County – Oil & Gas Local Government Designee (Jason Maxey, LGD)	970-400-3579

i.) Railroad Emergency Response

Name	Emergency	Office Phone
Great Western Railway	800-533-9416	303-398-4500
Union Pacific Railroad	888-877-7267	

Section 5

Spill Response and Clean Up

a.) Spill Response

There are multiple types of hydrocarbons which can be released/spilled during oil and gas production and exploration. Most commonly released are unrefined products such as crude oil and produced water. Refined petroleum products such as diesel, gasoline, and motor oil spills are less common, but still equally important to mitigate. If a spill is found reportable, it will be mitigated in accordance with Colorado Oil and Gas Conservation Commission (COGCC) and Colorado Department of Public Health and Environment (CDPHE) guidelines.

Once a release has been identified, it will be immediately stopped and contained if possible and is safe to do so. When containing a spill; pig blankets, snakes, absorbent materials, or earthen berms will be constructed around the release to keep material from spreading. These materials will be provided by KMOG and the contract company. Diligent efforts will be made to minimize contact with live vegetation or open water if release is outside of secondary containment structures.

In the event of a large incident requiring outside assistance, KMOG has contracted with EnviroServe. EnviroServe possesses a working knowledge of oil and gas operations, emergency response and Incident Command. Once notified EnviroServe personnel can be on location within two hours.

b.) Spill Reporting

What determines a reportable spill and to whom does the report go?

- A spill/release will be reported to the COGCC if released material is property of KMOG and meets the COGCC reporting thresholds (see below), an example would be crude oil released from a separator or produced water from a water vault, are of any size that impact or threaten to impact waters of the state, a residence or occupied structure, livestock or public byway
- A spill/release will be reported to the CDPHE if released material is in the custody of a third party or is a refined product. An example would be an oil hauler over filling a truck resulting in a spill/release onto the ground next to a flowing irrigation ditch.

There are three release volume thresholds which determine if a hydrocarbon spill is reportable. These are:

1. If crude oil or produced water is released **INSIDE** secondary containment and volume is greater than **five barrels**.
2. If crude oil or produced water is **OUTSIDE** secondary containment and volume is greater than **one barrel**.
3. If more than **25 gallons** of petroleum product such as diesel, gasoline or motor oil is spilled **OUTSIDE** of secondary containment.

Once a spill is determined reportable, there is a 24-hour deadline to make initial notification to the COGCC or CDPHE depending on product ownership. Spills/releases in the custody of KMOG will be reported by a Company representative. Spills/releases in the custody of a third party will be reported by the responsible company's HSE Department to the appropriate agency and to KMOG.

These regulatory guidelines will be strictly followed by KMOG and any contractors operating under KMOG guidance during all activities at the DB Farms 40-12HZ Well Pad.

Spills deemed as emergency will include notification to the local fire department using 911.

Section 6

Reportable Quantities

a) Reportable Quantities

Mandated by Section 312 of the Emergency Planning and Community Right-To-Know Act (EPCRA) – also known as SARA Title III – the Tier II form captures information about the types, quantities, and locations of hazardous chemicals at a given facility. The form also lists contact information for the facility’s designated emergency point-of-contact.

Any facility that is required to maintain MSDSs (or SDSs) under the Occupational Safety and Health Administration (OSHA) regulations for hazardous chemicals stored or used in the work place. Facilities with chemicals in quantities that equal or exceed the lists of lists thresholds must report.

Propane, benzene, propene and methane are on the lists of lists and are known to be in crude oil. In addition, diesel is on the lists of lists and may be stored on sites during construction.

b. Reportable Requirements

If your facility will meet the requirements under 40 CFR, you must submit your Tier II report to the state every year before March 1st.

These regulatory guidelines will be strictly followed by KMOG and any contractors operating under KMOG guidance during all activities at the DB Farms 40-12HZ Well Pad.

Section 7

Evacuation Information

a.) Evacuation Plan Procedures (public)

The procedure to be used in alerting nearby persons in the event of any occurrence that could pose a threat to life or property will be arranged and completed with public officials in detail.

In the event of an actual emergency, the following steps will be immediately taken:

1. The KMOG representative will immediately notify proper authorities, including the sheriff's office, highway patrol, and any other public officials as described above and will enlist their assistance in warning residents and transients in the calculated radius of exposure.
2. The KMOG representative will coordinate with local authorities to warn residents' down-wind of the location and within radius of exposure from the well site. Additional evacuation zones may be necessary as the situation warrants.
3. The KMOG representative will coordinate with appropriate emergency personnel to divert traffic in the vicinity away from the potentially dangerous area. No trespassing and warning signs will be posted at the entrance to the well site. The contract company will monitor essential and non-essential traffic on-site.
4. General:
 - a. The area included within the radius of exposure is considered to be the zone with the maximum potential hazard. When it is determined that conditions exist which create an additional area (beyond the initial zone of maximum potential hazard) vulnerable to possible hazard, public areas in the additional hazardous area will be evacuated.
 - b. In the event of a disaster, after the public areas have been evacuated and traffic stopped, it is expected that local civil authorities will have arrived and within a few hours will have assumed direction of and control of the public, including all public areas. KMOG will cooperate with these authorities to the fullest extent and will exert every effort by careful advice to such authorities to prevent panic or rumors.
 - c. KMOG will dispatch appropriate personnel to the disaster site as soon as possible. The company's personnel will cooperate with and provide such information to civil authorities as they might require.

Section 8

Coordination with First Responder Agencies

- a. If KMOG staff or contractors are contacted by the OEM or a Fire Protection District, they will provide the necessary information to assess the hazards onsite and coordinate with first responders during all phases of development of the site.
- b. In the event of an emergency requiring First Responders, Unified Command will be established between the KMOG appointed company man on location and First Responders present. Unified Command post will be established based on conditions present at time of incident.
- c. While foam is not currently supplied for oil and gas emergency response, KMOG is an active member of Colorado Preparedness Response Network (CPRN) and a solution is being sought thorough a cooperative effort including other operators, First Responders and Weld County.
- d. KMOG HSE representative and first responders identified in this Site Safety and Emergency Action Plan have reviewed this plan and if requested, discussed coordination efforts in the event of an emergency situation requiring first responder assistance.

Address: 16545 CR 25



DB FARMS 40-12HZ
Weld County, Colorado

GPS Coordinates:

Pad Site: LAT: 40.240278° LONG: -104.830866°

Access Road: LAT: 40.239646° LONG: -104.829919°

**All Emergencies will be reported
through 911**

NOTIFICATIONS

1. National Response Center: 800-424-8802
2. Kerr McGee/Emergency Response Coordinator
- Integrated Operations Center (IOC)
970-506-5980
3. COGCC: 719-343-0130, 970-573-1277
4. EPA Region VIII: 303-312-6312
5. Weld County OEM: 970-304-6540
6. Platteville-Gilcrest Fire Protection District:
970-785-2232

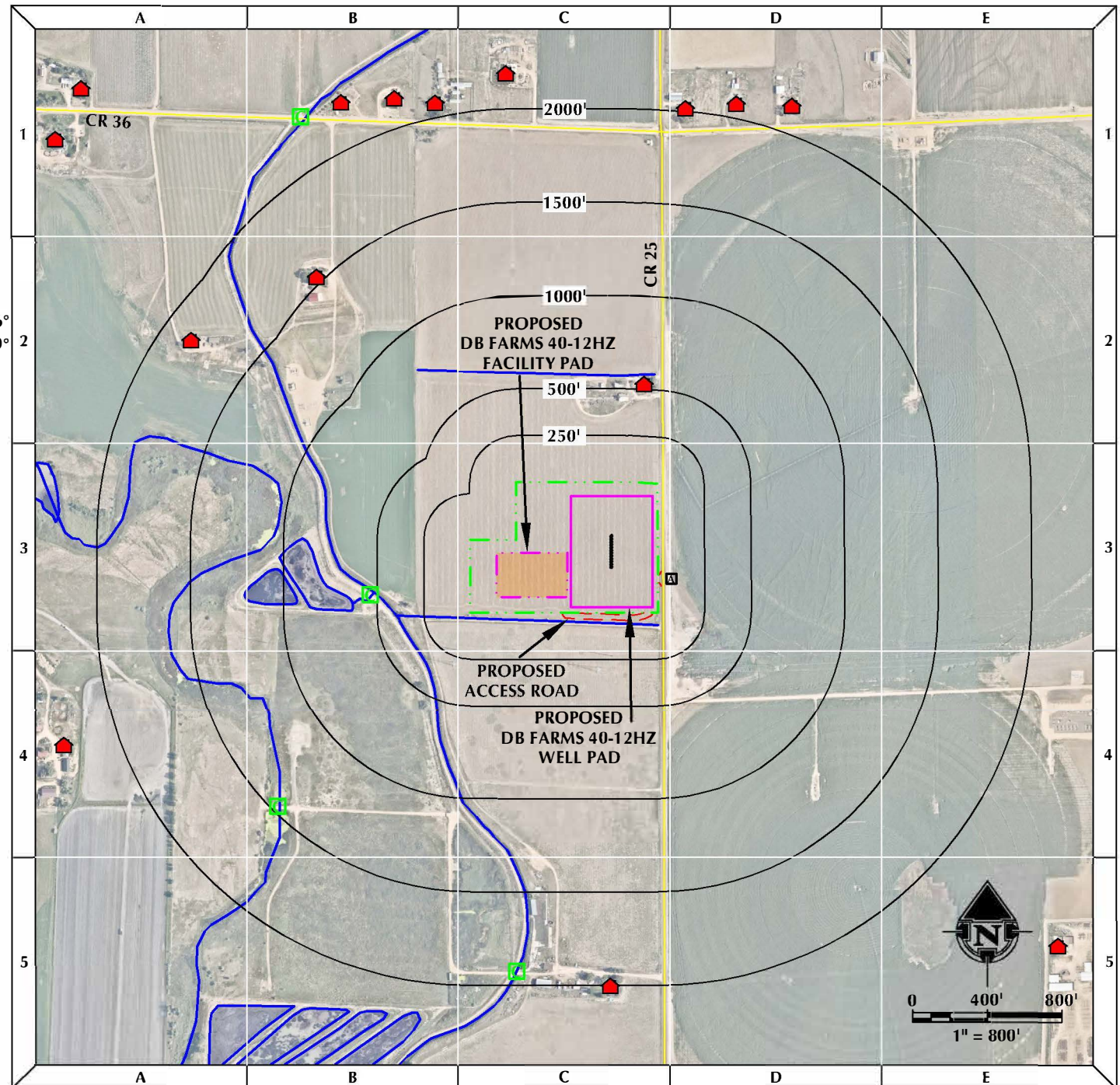
RESPONSE OBJECTIVES

Minimize the impact to the environment and local community. Contain and recover released product to the extent possible

CRITICAL RECEPTORS

1. FARMERS INDEPENDENT DITCH
2. IRRIGATION DITCH
3. SURROUNDING RESIDENTIAL PROPERTIES
4. N/A

Note: This Tactical Response Card is a reference tool and is intended to provide guidance during an actual event or exercise. Placement of resources may need to be adjusted according to environmental variables. It is the responsibility of emergency response personnel to be trained in response and to be able to make adjustments to the card as needed.



LEGEND:		PROPOSED WELL DISTURBANCE AREA	NEIGHBORHOOD BUSINESS BUILDING UNIT - RESIDENCE	POND DELINEATED WETLAND	PROPOSED ACCESS ROAD SITE ACCESS
DISTURBANCE AREA BUFFERS		PROPOSED WELL PAD	SCHOOL	DITCH/CANAL/RIVER/DRAINAGE	RAILROAD TRACKS
PROPOSED FACILITY PAD		EXISTING CULVERT	PUBLIC ROADS	CONSULTING, LLC	
				SHERRIDAN OFFICE 1098 Sheridan Avenue Sheridan, Wyoming 82801 Phone 307-674-0609	
				LOVELAND OFFICE 6706 North Franklin Avenue Loveland, Colorado 80538 Phone 970-776-4111	
				SCALE: 1" = 800' NAD83 CO-Nft	
				DRAWN: GLK DATE: 9/4/2020	
				REVISED: Page 17 DATE: 11/10/2020	

TACTICAL RESPONSE CHECKLIST

After assessing the incident level and contacting the appropriate parties, the following steps will need to be taken for the tactical response:

1. Implement National Incident Management System (NIMS) Incident Command System (ICS)
2. Assess hazards to site, workers, and public
3. Safety Officer should complete form ICS 208 – Safety Message/Plan
4. Conduct Job Safety Briefing
5. Assess property and environmental impacts
6. Develop ICS 201 Incident Briefing and ICS 202 – Incident Objectives
7. Implement response actions:
 - a) Confine spills to tanks/vessels
 - b) Locate leading edge of spilled material
 - c) Contain spills on ground and any surrounding drainage ways
 - d) Recover spilled materials
 - e) Dispose of recovered materials properly
8. Document site conditions and activities
9. Document impacts to natural, economic, and cultural resources
10. Document site restoration/remediation activities

See the KMG/Emergency Response Plan for the full list of NIMS ICS Forms.

PAD Name and PAD STATS

FLOW STATS – 30 DAY AVERAGE IP

GAS (MCF/D)	OIL (BBL/D)	WATER (BBL/D)
		TBD

WELL PAD CONTAINMENT STORAGE

QTY.	TYPE	SIZE (BBL)
	Water Tanks	285 BBLs

Note: This Tactical Response Card is a reference tool and is intended to provide guidance during an actual event or exercise. Placement of resources may need to be adjusted according to environmental variables. It is the responsibility of emergency response personnel to be trained in response and to be able to make adjustments to the card as needed.

RESPONSE RESOURCE CONTACT INFORMATION

Name	Main Phone
Kerr McGee Oil & Gas OnShore LP Integrated Operations Center (IOC)	970-506-5980

STATE, FEDERAL, MUNICIPAL EMERGENCY RESPONDERS

Name	24-Hour Phone
Weld County OEM	970-304-6540
Weld County Sheriff	970-356-4015

National Response Center	800-424-8802
Colorado Dept of Natural Resources	303-866-3311
EPA Region 8	303-312-6312
Department of Transportation	855-368-4200

RESPONSE CONTRACTORS

Contractor Name	Office #	Alternative #
<u>Emergency Response Contractors</u>		
EnviroServe	800-488-0910	720-450-1316
EHA-Environmental HAZMAT Services	720-225-9252	303-525-3111
Wild Well Control	281-784-4700	
Boots & Coots	281-931-8884	
Cudd Pressure Control	800-990-2833	307-382-6650 713-849-2769
<u>Support - Incident Management Team Consultant</u>		
CTEH	2501-801-8500	317-473-0688
The Response Group	281-880-5000	

Oil Spill Clean Up Services -Wildlife Rehabilitation

Birds of Prey Foundation	303-460-0674	
Greenwood Wildlife Rehab Ctr.	303-823-8455	303-545-5849
Rocky Mountain Raptor Program	970-484-7756	970-222-0322

Support - Consultants

AECOM/ENSR	970-493-8878	720-210-7924
LT Environmental	303-962-5504	
GHD First (Fast Incident Response Services Team)(24hr hotline)	866-812-9565	
Tasman Geoscience	303-507-8869	

RESPONSE OBJECTIVES CHECKLIST

SAFETY – PROTECT LIFE

- ❖ Evaluate and account for all personnel
- ❖ Isolate all potential ignition sources
- ❖ Initiate emergency services immediately, as needed (911, Fire, LEPC)
- ❖ Identify hazard(s) of emitted material (obtain SDS)
- ❖ Establish site control (safe perimeter and evacuation routes)
- ❖ Monitor air in impacted areas
- ❖ Develop Site Safety Plan (ICS 208) and Medical Plan
- ❖ Continually assess site hazards and risks

RESPONSE – INCIDENT STABILIZATION

- ❖ Conduct notifications to external agencies and internal personnel
- ❖ Identify and implement staging areas to support response operations
- ❖ Activate response company for equipment and manpower as needed
- ❖ Activate response tactics to contain and recover product/material
- ❖ Establish command post and field communications
- ❖ Establish flight traffic restriction if required
- ❖ Provide personnel and equipment support as required
- ❖ Implement waste handling and disposal procedures as required
- ❖ Initiate decontamination and demobilization procedures when appropriate

ENVIRONMENTAL – PROTECT THE ENVIRONMENT

- ❖ Identify, prioritize, and protect environmentally sensitive areas
- ❖ Establish wildlife rescue rehabilitation operations if required
- ❖ Verify release if waters are impacted
- ❖ Conduct visual assessments (spill tracking and surveillance)