

MATCH LINE  
SEE SHEET 2

T3N, R67W

WELLBORE  
CONTINUES  
INTO SECTION 1

NW. COR.  
SEC. 12, T3N, R67W  
FOUND 3 1/4"  
ALUM. CAP  
L.S. NO. 7242

N 88°15'09" W  
1332.74' (M)

W. 1/16 COR.  
SEC. 1 & SEC. 12  
T3N, R67W  
FOUND 2 1/2" ALUM. CAP  
P.L.S. NO. 38345

N 87°53'26" W  
1343.89' (M)

N. 1/4 COR.  
SEC. 12, T3N, R67W  
FOUND 3 1/4"  
ALUM. CAP  
P.L.S. NO. 10855

N 87°52'07" W  
1343.64' (M)

E. 1/16 COR.  
SEC. 1 & SEC. 12  
T3N, R67W  
FOUND 3 1/4"  
ALUM. CAP  
L.S. NO. 37041

NE. COR.  
SEC. 12, T3N, R67W  
FOUND 3 1/4"  
ALUM. CAP  
P.L.S. NO. 10855

W. 1/4 COR.  
SEC. 12, T3N, R67W  
FOUND 2 1/2"  
ALUM. CAP  
ILLEGIBLE

CW. 1/16 COR.  
SEC. 12, T3N, R67W  
FOUND 2" ALUM. CAP  
P.L.S. NO. 10855

N 87°53'53" W  
1323.65' (M)

CENTER 1/4 COR.  
SEC. 12, T3N, R67W  
FOUND 2 1/2"  
ALUM. CAP  
P.L.S. NO. 13155

N 87°33'11" W  
1332.41' (M)

DB FARMS 12-1HZ  
SURFACE LOCATION

12

CE. 1/16 COR.  
SEC. 12, T3N, R67W  
FOUND 3 1/4"  
ALUM. CAP  
L.S. NO. 37041

N 87°45'16" W  
1339.41' (M)

N 87°44'46" W  
1339.59' (M)

E. 1/4 COR.  
SEC. 12, T3N, R67W  
FOUND 3 1/4"  
ALUM. CAP  
P.L.S. NO. 13155

SURFACE LOCATION: NAD 83  
GROUND ELEVATION= 4791.1'  
LATITUDE= 40.240278°  
LONGITUDE= -104.830866°  
LATITUDE= 40°14'25.000"  
LONGITUDE= -104°49'51.117"  
HEEL LOCATION: NAD 83  
LATITUDE= 40.249383°  
LONGITUDE= -104.830916°  
LATITUDE= 40°14'57.779"  
LONGITUDE= -104°49'51.298"  
BOTTOM HOLE LOCATION: NAD 83  
LATITUDE= 40.217710°  
LONGITUDE= -104.830848°  
LATITUDE= 40°13'03.756"  
LONGITUDE= -104°49'51.053"

SW. COR.  
SEC. 12, T3N, R67W  
FOUND 1 1/2" BRASS CAP  
NO NUMBER

S. 1/4 COR.  
SEC. 12, T3N, R67W  
FOUND 3 1/4" ALUM. CAP  
L.S. NO. 7242

E. 1/16 COR.  
SEC. 12 & SEC. 13, T3N, R67W  
FOUND 3 1/4" ALUM. CAP  
L.S. NO. 7242

SE. COR.  
SEC. 12, T3N, R67W  
FOUND 3 1/4" ALUM. CAP  
L.S. NO. 28258

MATCH LINE  
SEE SHEET 3

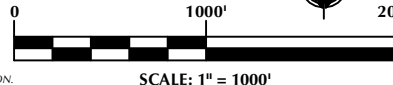
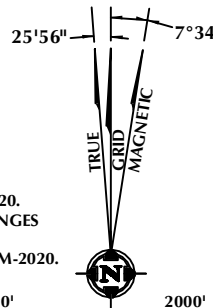
#### CERTIFICATE OF SURVEYOR:

THIS IS TO CERTIFY THAT THE ABOVE PLAT WAS PREPARED FROM FIELD NOTES OF ACTUAL SURVEYS MADE BY ME OR UNDER MY SUPERVISION AND TO THE SAME BE TRUE AND CORRECT TO THE BEST OF MY KNOWLEDGE AND BELIEF. THIS CERTIFICATE DOES NOT REPRESENT A LAND SURVEY PLAT OR IMPROVEMENT SURVEY PLAT AS DEFINED BY C.R.S. 38-51-102 AND CANNOT BE RELIED UPON TO DETERMINE OWNERSHIP.

*Randall K. French*  
PROFESSIONAL LAND SURVEYOR  
38512  
5/24/21  
RANDALL K. FRENCH  
PROFESSIONAL LAND SURVEYOR  
COLORADO REGISTRATION NUMBER 38512

NOTICE:  
ACCORDING TO COLORADO STATE LAW YOU MAY BE SUBJECT TO LEGAL ACTION BASED UPON ANY DEFECT IN THIS SURVEY WITHIN THREE YEARS AFTER YOU FIRST DISCOVER SUCH DEFECT. IN NO EVENT MAY ANY ACTION BASED UPON ANY DEFECT IN THIS SURVEY BE COMMENCED MORE THAN TEN YEARS FROM THE DATE ON THE CERTIFICATION SHOWN HEREON.

NOTE:  
MAGNETIC NORTH IS  
CURRENT AS OF 3/16/2020.  
MAGNETIC NORTH CHANGES  
WEST 0°06' PER YEAR.  
MAGNETIC MODEL: WMM-2020.



#### NOTES:

- ▲ INDICATES SECTION CORNER.
- INDICATES CALCULATED CORNER.
- DRAWING LATITUDE AND LONGITUDE COORDINATES ARE NAD 83 (2011)(EPOCH:2010).
- ELEVATION BASED ON NAVD88 (GEOID12B).
- BASIS OF BEARING DERIVED FROM COLORADO COORDINATE SYSTEM OF 1983 NORTH ZONE.
- ALL MEASURED DISTANCES ARE GRID.  
COMBINED SCALE FACTOR: .99973112 CALCULATED FROM THE SW. CORNER OF SECTION 12, T3N, R67W.
- OPERATOR: NICK KACZMARCZYK / PDOP = 1.6.
- SEE ADDENDUM TO WELL LOCATION CERTIFICATE FOR EXISTING IMPROVEMENTS WITHIN 500' OF THE WELL PAD.
- WELL FOOTAGES ARE MEASURED AT RIGHT ANGLES TO THE SECTION LINES.
- THE BOTTOM OF HOLE BEARS S00°31'36"E, 11538' FROM THE HEEL LOCATION.

#### WELL PAD - DB FARMS 40-12HZ

DB FARMS 12-1HZ  
WELL LOCATION CERTIFICATE  
2174' FNL & 279' FEL (SENE) (SURFACE)  
LOCATED IN SECTION 12  
1139' FSL & 300' FEL (SESE) (HEEL)  
LOCATED IN SECTION 1  
175' FSL & 300' FEL (SESE) (BOTTOM)  
LOCATED IN SECTION 13  
T3N, R67W, 6TH P.M.  
WELD COUNTY, COLORADO

Kerr-McGee Oil &  
Gas Onshore L.P.  
1099 18th Street  
Denver, Colorado 80202



#### CONSULTING, LLC

SHERIDAN OFFICE  
1095 Saberton Avenue  
Sheridan, Wyoming 82801  
Phone 307-674-0609

LOVELAND OFFICE  
6706 North Franklin Avenue  
Loveland, Colorado 80538  
Phone 970-776-4331

DRAFTED BY:	LMO	CHECKED BY:	RKF	SHEET NO:
DATE DRAFTED:	9/3/2020	DATE SURVEYED:	3/16/2020	1
REVISED:	5/24/21	FILE NAME:	17-182	1 OF 3

K:\MAPS\2017\2017-182\_DB\_FARMS\_T3N\_R67W\_SEC.12\PLATS\DB FARMS 40-12HZ\DB FARMS 40-12HZ PLAT.dwg, 5/21/2021 11:44:44 AM, samuel

# T3N, R67W

NW. COR.  
SEC. 1, T3N, R67W  
FOUND 3 1/4" ALUM. CAP  
L.S. NO. 7242

NE. COR.  
SEC. 1, T3N, R67W  
FOUND 3 1/4" ALUM. CAP  
L.S. NO. 38026

N. 1/4 COR.  
SEC. 1, T3N, R67W  
FOUND 3 1/4" ALUM. CAP  
L.S. NO. 38026

NO. 1  
CW. 1/16 COR.  
SEC. 1, T3N, R67W  
FOUND 3 1/4"  
ALUM. CAP  
L.S. NO. 4392

W. 1/4 COR.  
SEC. 1, T3N, R67W  
FOUND 2 1/2"  
ALUM. CAP  
ILLEGIBLE

E. 1/4 COR.  
SEC. 1, T3N, R67W  
FOUND 3 1/4"  
ALUM. CAP  
P.L.S. NO. 10855

CENTER 1/4 COR.  
SEC. 1, T3N, R67W  
FOUND 3 1/4" ALUM. CAP  
L.S. NO. 37041

SE. 1/16 COR.  
SEC. 1, T3N, R67W  
FOUND 3 1/4" ALUM. CAP  
P.L.S. NO. 25614

E. 1/16 COR.  
SEC. 1 & SEC. 12  
T3N, R67W  
FOUND 3 1/4" ALUM. CAP  
L.S. NO. 37041

S. 1/4 COR.  
SEC. 1, T3N, R67W  
FOUND 3 1/4" ALUM. CAP  
P.L.S. NO. 10855

SW. COR.  
SEC. 1, T3N, R67W  
FOUND 3 1/4" ALUM. CAP  
L.S. NO. 7242

SE. COR.  
SEC. 1, T3N, R67W  
FOUND 3 1/4" ALUM. CAP  
P.L.S. NO. 10855

MATCH LINE  
SEE SHEET 1

SURFACE LOCATION: NAD 83  
GROUND ELEVATION= 4791.1'  
LATITUDE= 40.240278°  
LONGITUDE= -104.830866°  
HEEL LOCATION: NAD 83  
LATITUDE= 40.249383°  
LONGITUDE= -104.830916°  
BOTTOM HOLE LOCATION: NAD 83  
LATITUDE= 40.217710°  
LONGITUDE= -104.830848°  
LATITUDE= 40°13'03.756"  
LONGITUDE= -104°49'51.053"

W. 1/16 COR.  
SEC. 1 & SEC. 12, T3N, R67W  
FOUND 2 1/2" ALUM. CAP  
P.L.S. NO. 38345

WELLBORE CONTINUES INTO SECTION 12

## NOTES:

1. ▲ INDICATES SECTION CORNER.
2. ● INDICATES CALCULATED CORNER.
3. DRAWING LATITUDE AND LONGITUDE COORDINATES ARE NAD 83 (2011)(EPOCH:2010).
4. ELEVATION BASED ON NAVD88 (GEOID12B).
5. BASIS OF BEARING DERIVED FROM COLORADO COORDINATE SYSTEM OF 1983 NORTH ZONE.
6. ALL MEASURED DISTANCES ARE GRID.
7. COMBINED SCALE FACTOR: .99973112 CALCULATED FROM THE SW. CORNER OF SECTION 12, T3N, R67W.
8. OPERATOR: NICK KACZMARCZYK / PDOP = 1.6.
9. SEE ADDENDUM TO WELL LOCATION CERTIFICATE FOR EXISTING IMPROVEMENTS WITHIN 500' OF THE WELL PAD.
10. WELL FOOTAGES ARE MEASURED AT RIGHT ANGLES TO THE SECTION LINES.
11. THE BOTTOM OF HOLE BEARS S00°31'36"E, 11538' FROM THE HEEL LOCATION.
12. NO. 1 & NO. 2 AS SHOWN HEREON ARE GOVERNMENT LOTS 1 & 2 PER THE ORIGINAL GLO SURVEY.

## CERTIFICATE OF SURVEYOR:

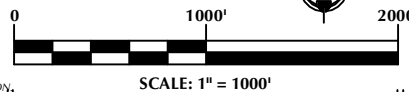
THIS IS TO CERTIFY THAT THE ABOVE PLAT WAS PREPARED FROM FIELD NOTES OF ACTUAL SURVEYS MADE BY ME OR UNDER MY SUPERVISION AND THAT THE SAME ARE TRUE AND CORRECT TO THE BEST OF MY KNOWLEDGE AND BELIEF. THIS CERTIFICATE DOES NOT REPRESENT A LAND SURVEY PLAT OR IMPROVEMENT SURVEY PLAT AS DEFINED BY C.R.S. 38-51-102 AND CANNOT BE RELIED UPON TO DETERMINE OWNERSHIP.

*Randall K. French*  
38512

RANDALL K. FRENCH  
PROFESSIONAL LAND SURVEYOR  
COLORADO REGISTRATION NUMBER 38512

NOTICE:  
ACCORDING TO COLORADO STATE LAW YOU MUST COMMENCE A LEGAL ACTION BASED UPON ANY DEFECT IN THIS SURVEY WITHIN THREE YEARS AFTER YOU FIRST DISCOVER SUCH DEFECT. IN NO EVENT MAY ANY ACTION BASED UPON ANY DEFECT IN THIS SURVEY BE COMMENCED MORE THAN TEN YEARS FROM THE DATE ON THE CERTIFICATION SHOWN HEREON.

NOTE:  
MAGNETIC NORTH IS  
CURRENT AS OF 3/16/2020.  
MAGNETIC NORTH CHANGES  
WEST 0°06' PER YEAR.  
MAGNETIC MODEL: WMM-2020.



SCALE: 1" = 1000'

## WELL PAD - DB FARMS 40-12HZ

DB FARMS 12-1HZ  
WELL LOCATION CERTIFICATE  
2174' FNL & 279' FEL (SENE) (SURFACE)  
LOCATED IN SECTION 12  
1139' FSL & 300' FEL (SESE) (HEEL)  
LOCATED IN SECTION 1  
175' FSL & 300' FEL (SESE) (BOTTOM)  
LOCATED IN SECTION 13  
T3N, R67W, 6TH P.M.  
WELD COUNTY, COLORADO

Kerr-McGee Oil &  
Gas Onshore L.P.  
1099 18th Street  
Denver, Colorado 80202



## CONSULTING, LLC

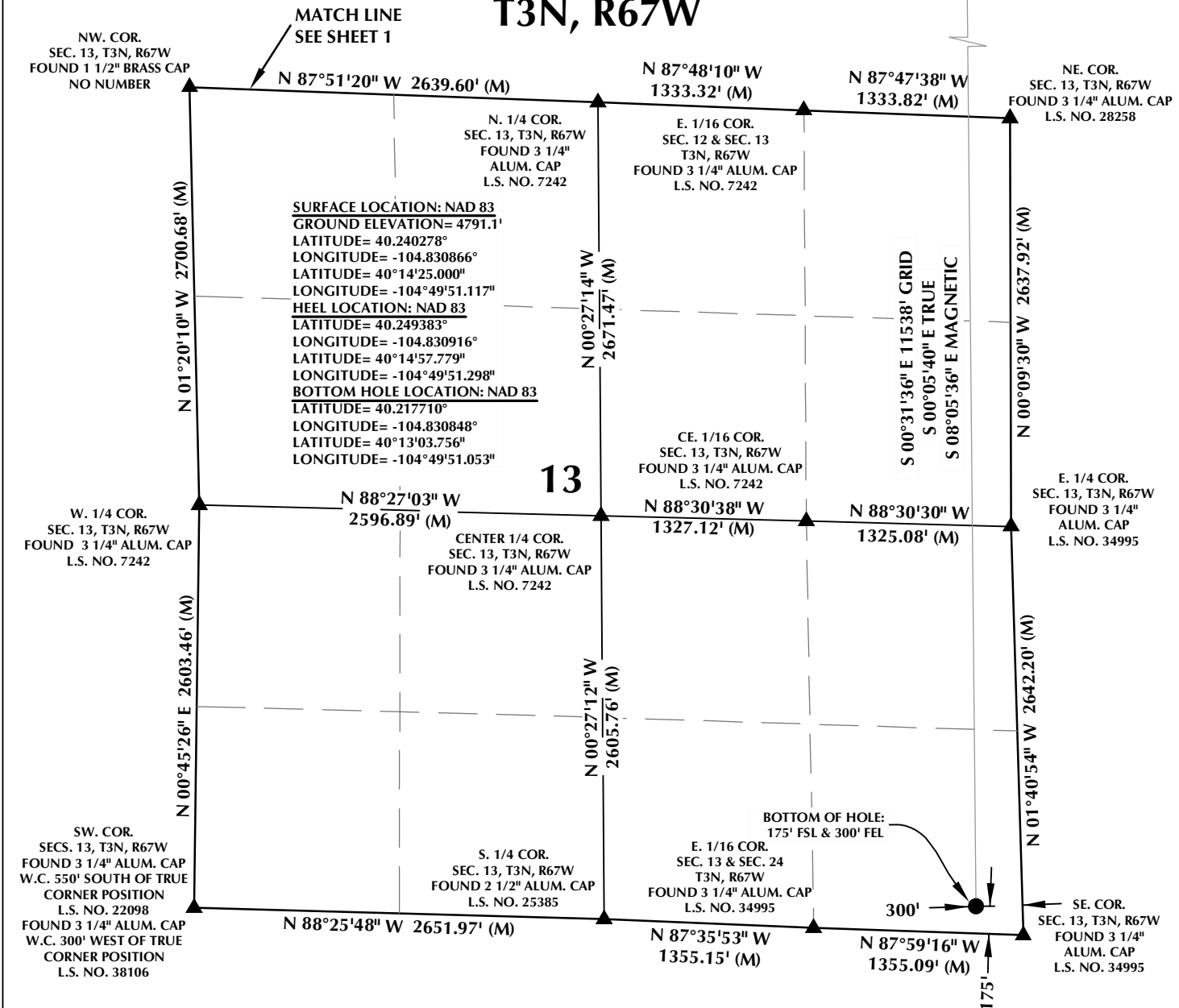
SHERIDAN OFFICE  
1095 Saberton Avenue  
Sheridan, Wyoming 82801  
Phone 307-674-0609

LOVELAND OFFICE  
6706 North Franklin Avenue  
Loveland, Colorado 80538  
Phone 970-776-4331

DRAFTED BY:	LMO	CHECKED BY:	RKF	SHEET NO:
DATE DRAFTED:	9/3/2020	DATE SURVEYED:	3/16/2020	2
REVISED:	5/24/21	FILE NAME:	17-182	2 OF 3

K:\MAPS\2017\2017\_182\_DB\_FARMS\_T3N\_R67W\_SEC\_12\PLATS\DB FARMS 40-12HZ\DB FARMS 40-12HZ PLAT.dwg, 5/21/2021 11:44:46 AM, samuel

T3N, R67W



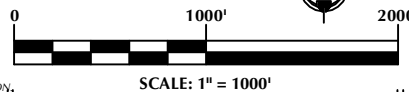
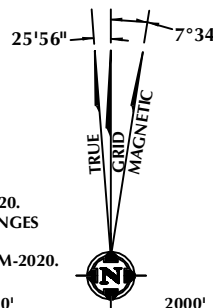
#### CERTIFICATE OF SURVEYOR:

THIS IS TO CERTIFY THAT THE ABOVE PLAT WAS PREPARED FROM FIELD NOTES OF ACTUAL SURVEYS MADE BY ME OR UNDER MY SUPERVISION AND THAT THE SAME ARE TRUE AND CORRECT TO THE BEST OF MY KNOWLEDGE AND BELIEF. THIS CERTIFICATE DOES NOT REPRESENT A LAND SURVEY PLAT OR IMPROVEMENT SURVEY PLAT AS DEFINED BY C.R.S. 38-51-102 AND CANNOT BE RELIED UPON TO DETERMINE OWNERSHIP.

*Randall K. French*  
PROFESSIONAL LAND SURVEYOR  
38512  
5/24/21  
RANDALL K. FRENCH  
PROFESSIONAL LAND SURVEYOR  
COLORADO REGISTRATION NUMBER 38512

NOTE:  
ACCORDING TO COLORADO STATE LAW YOU MUST COMMENCE AN ACTION BASED UPON ANY DEFECT IN THIS SURVEY WITHIN THREE YEARS AFTER YOU FIRST DISCOVER SUCH DEFECT. IN NO EVENT MAY ANY ACTION BASED UPON ANY DEFECT IN THIS SURVEY BE COMMENCED MORE THAN TEN YEARS FROM THE DATE ON THE CERTIFICATION SHOWN HEREON.

NOTE:  
MAGNETIC NORTH IS  
CURRENT AS OF 3/16/2020.  
MAGNETIC NORTH CHANGES  
WEST 0°06' PER YEAR.  
MAGNETIC MODEL: WMM-2020.



#### NOTES:

1. ▲ INDICATES SECTION CORNER.
2. ● INDICATES CALCULATED CORNER.
3. DRAWING LATITUDE AND LONGITUDE COORDINATES ARE NAD 83 (2011)(EPOCH:2010).
4. ELEVATION BASED ON NAVD88 (GEOID12B).
5. BASIS OF BEARING DERIVED FROM COLORADO COORDINATE SYSTEM OF 1983 NORTH ZONE.
6. ALL MEASURED DISTANCES ARE GRID.  
COMBINED SCALE FACTOR: .99973112 CALCULATED FROM THE SW. CORNER OF SECTION 12, T3N, R67W.
7. OPERATOR: NICK KACZMARCZYK / PDOP = 1.6.
8. SEE ADDENDUM TO WELL LOCATION CERTIFICATE FOR EXISTING IMPROVEMENTS WITHIN 500' OF THE WELL PAD.
9. WELL FOOTAGES ARE MEASURED AT RIGHT ANGLES TO THE SECTION LINES.
10. THE BOTTOM OF HOLE BEARS S00°31'36"E, 11538' FROM THE HEEL LOCATION.

#### WELL PAD - DB FARMS 40-12HZ

DB FARMS 12-1HZ  
WELL LOCATION CERTIFICATE  
2174' FNL & 279' FEL (SENE) (SURFACE)  
LOCATED IN SECTION 12  
1139' FSL & 300' FEL (SESE) (HEEL)  
LOCATED IN SECTION 1  
175' FSL & 300' FEL (SESE) (BOTTOM)  
LOCATED IN SECTION 13  
T3N, R67W, 6TH P.M.  
WELD COUNTY, COLORADO

Kerr-McGee Oil &  
Gas Onshore L.P.  
1099 18th Street  
Denver, Colorado 80202



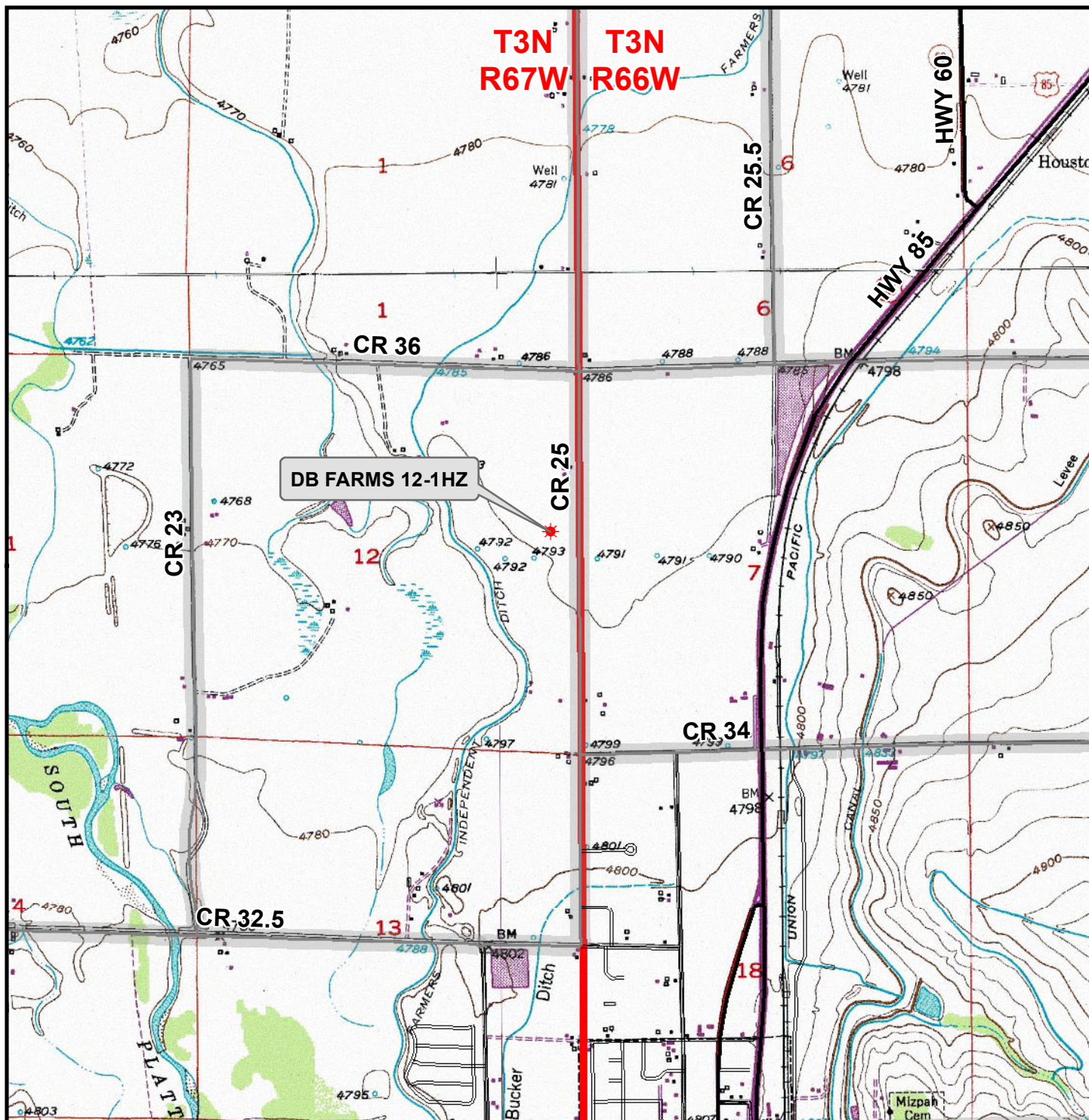
#### CONSULTING, LLC

SHERIDAN OFFICE  
1095 Saberton Avenue  
Sheridan, Wyoming 82801  
Phone 307-674-0609

LOVELAND OFFICE  
6706 North Franklin Avenue  
Loveland, Colorado 80538  
Phone 970-776-4331

DRAFTED BY:	LMO	CHECKED BY:	RKF	SHEET NO:
DATE DRAFTED:	9/3/2020	DATE SURVEYED:	3/16/2020	3
REVISED:	5/24/21	FILE NAME:	17-182	3 OF 3





### Legend

- ★ Well - Proposed
- ==== Road - Primitive - Existing
- Road - County - Existing
- Road - Improved - Existing
- Road - Highway - Existing

**WELL PAD - DB FARMS 40-12HZ**

**GENERAL LOCATION MAP  
DB FARMS 12-1HZ  
LOCATED IN SECTION 12  
T3N, R67W, 6th P.M.  
WELD COUNTY, COLORADO**

**Kerr-McGee Oil &  
Gas Onshore L.P.**

1099 18th Street  
Denver, Colorado 80202



**CONSULTING, LLC**

**SHERIDAN OFFICE**  
1095 Saberton Avenue  
Sheridan, Wyoming 82801  
Phone 307-674-0609

**LOVELAND OFFICE**  
6706 North Franklin Avenue  
Loveland, Colorado 80538  
Phone 970-776-4331



SCALE: 1" = 2,000ft

NAD83 CO-Nft

DRAWN: DP

DATE: 11 Apr 2019

REVISED:

DATE: