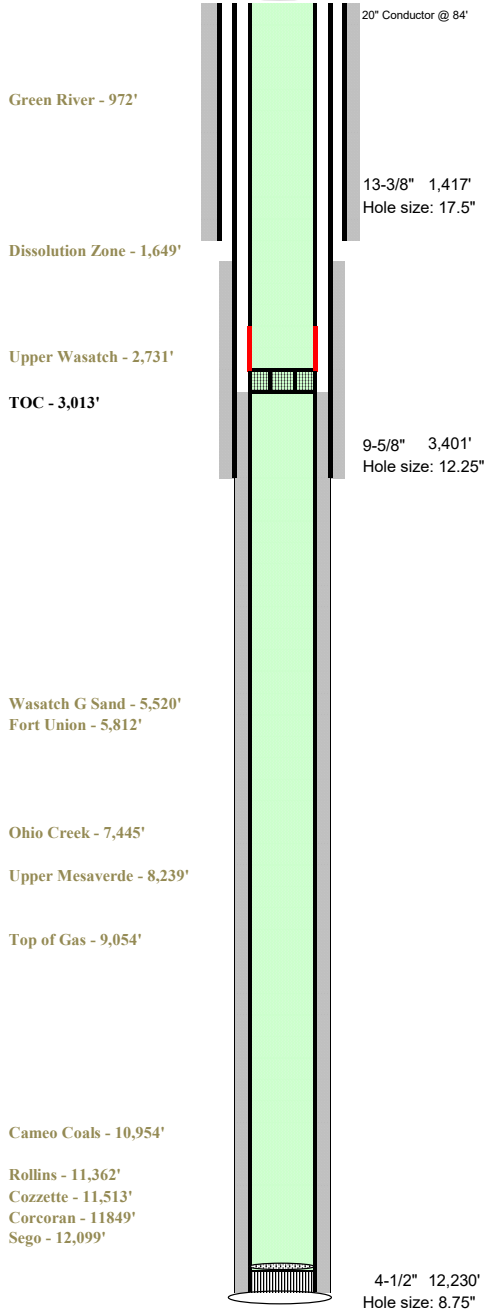




RG 44-7-297

Proposed WBD



Well Name  
Location  
Field  
County  
API

**RG 44-7-297**  
**NWNE Sec 18 T2S R97W**  
**Sulphur Creek**  
**Rio Blanco, CO**  
**05-103-12471**

**Spud 03/04/2021**

Conductor Casing	84'	20"	
Surf Casing	1,417'	13-3/8"	54.50# J55 BTC
Cement	Lead	559 Sks 12.3#	
Prod Casing	3,401'	9-5/8"	36# J-55 LTC
Cement	Lead	100 Sks 12.3#	
	Tail	121 Sks 12.8#	
Prod Casing	12,230'	4-1/2"	11.6# HCP-110 DWC/C
Cement (Actual Pump)	Scavenger	366 Sks 11.0#	
	Lead	247 Sks 12.7#	
	Tail	1035 Sks 13.5#	
10k External Casing Patch	±2,000'		
10k RBP	TBD		

**TOC - Bond Log** 3,013'

Prepared By: Tyler Gillam  
cell phone: 936-520-8434

Revision Date:  
9/16/2021