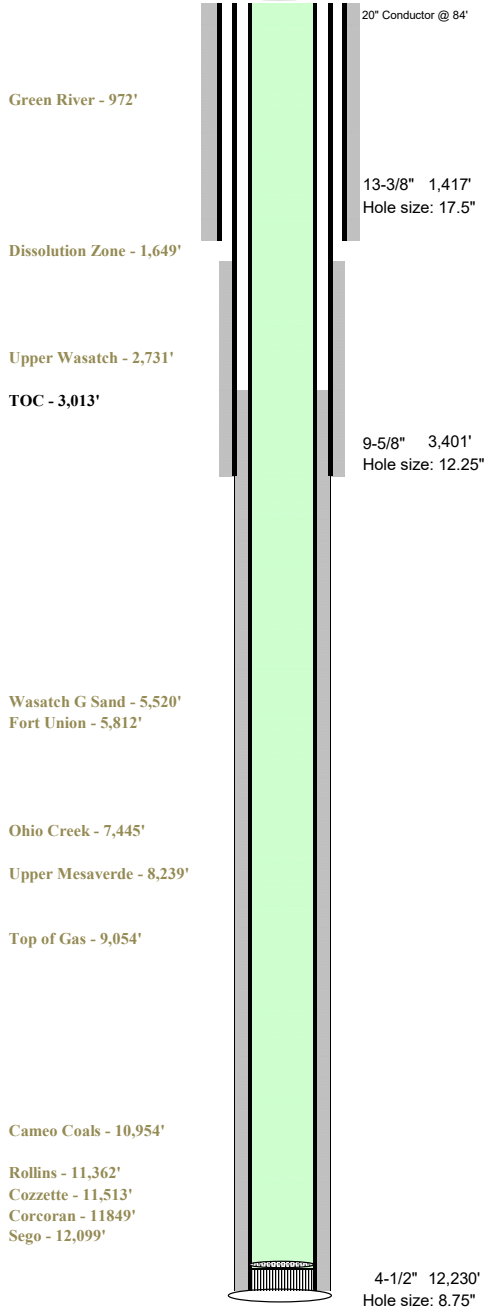




RG 44-7-297

Current WBD



Well Name  
Location  
Field  
County  
API

**RG 44-7-297**  
**NWNE Sec 18 T2S R97W**  
**Sulphur Creek**  
**Rio Blanco, CO**  
**05-103-12471**

**Spud 03/04/2021**

|                      |           |                |                     |
|----------------------|-----------|----------------|---------------------|
| Conductor Casing     | 84'       | 20"            |                     |
| Surf Casing          | 1,417'    | 13-3/8"        | 54.50# J55 BTC      |
| Cement               | Lead      | 559 Sks 12.3#  |                     |
| Prod Casing          | 3,401'    | 9-5/8"         | 36# J-55 LTC        |
| Cement               | Lead      | 100 Sks 12.3#  |                     |
|                      | Tail      | 121 Sks 12.8#  |                     |
| Prod Casing          | 12,230'   | 4-1/2"         | 11.6# HCP-110 DWC/C |
| Cement (Actual Pump) | Scavenger | 366 Sks 11.0#  |                     |
|                      | Lead      | 247 Sks 12.7#  |                     |
|                      | Tail      | 1035 Sks 13.5# |                     |

**TOC - Bond Log** 3,013'

Prepared By: Tyler Gillam  
cell phone: 936-520-8434

Revision Date:  
9/16/2021