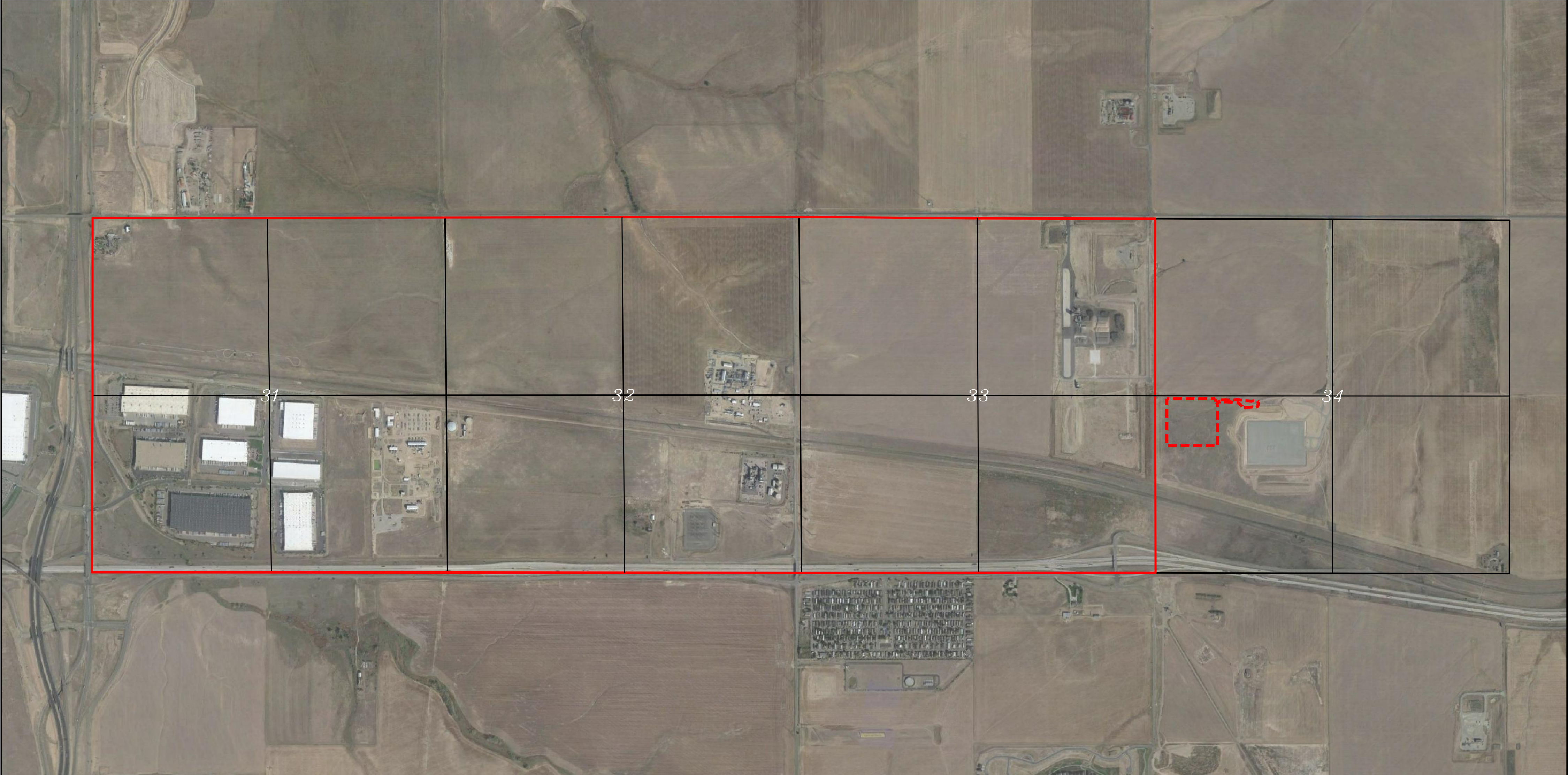


- LEGEND**
- DSU BOUNDARY
 - SECTION LINE
 - 1/4 SECTION LINE
 - OIL & GAS LOCATION



**CRESTONE PEAK
RESOURCES OPERATING LLC**
BLUE 3-65 33-32-31 1BH, 2AH, 2BH, 3AH, 3BH, 4AH, & 4BH
NW 1/4 SW 1/4, SECTION 34, T3S, R65W, 6th P.M.
ADAMS COUNTY, COLORADO

| | | | |
|-------------|-------------------|----------|------------|
| SURVEYED BY | MATT MILLER, O.R. | 10-27-20 | SCALE |
| DRAWN BY | C.C. | 08-03-21 | 1" = 1000' |

REV: 1 08-13-21 C.C. (UPDATE OIL & GAS LOCATION)

OGDP MAP



UELS, LLC
Corporate Office * 85 South 200 East
Vernal, UT 84078 * (435) 789-1017