

See Figure 6b for the Extent of the Colorado Geologic Survey Data

Aota Technical, LLC
Twin Bridges Resources LLC
Red Rocks 35-15
Geologic Hazard Map
Las Animas County
NW1/4NE1/4 Sec. 35, T29S R55W 6th P.M.

Date
6/25/21

Figure No.
Figure 6a

Legend

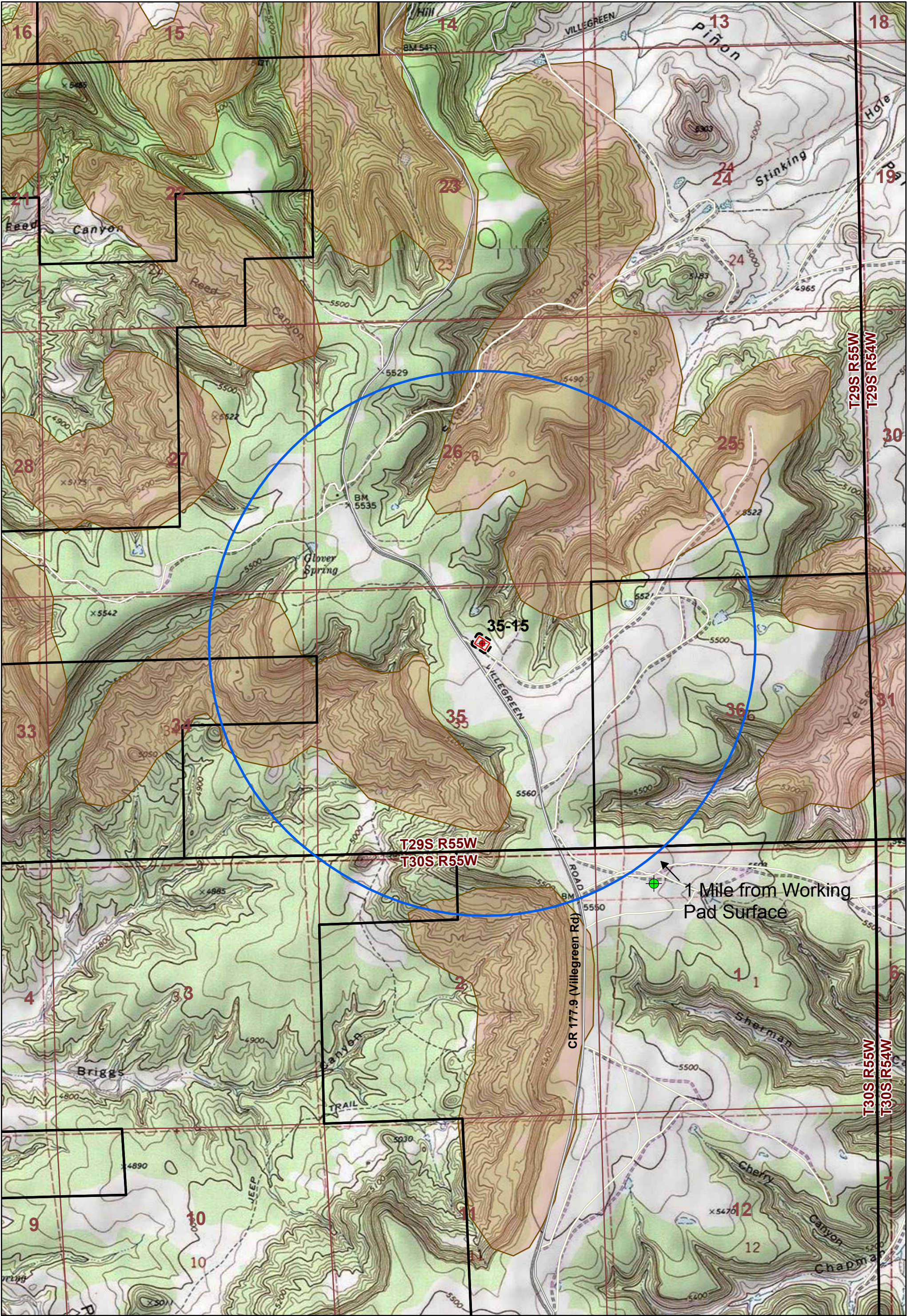
- Dry & Abandoned O&G Well
- Conventional Vertical Helium Gas Well
- Working Pad Surface (170' x 250')
- Oil and Gas Location (180' x 260')
- 1 Mile from Working Pad Surface

- Colorado Geological Survey Landslide Area Data
- Parcel Boundary

N

0 500 1,000 2,000
Feet

Data Source:
COCGCC GIS Online
Colorado Geological Survey



Aota Technical, LLC

Twin Bridges Resources LLC

Red Rocks 35-15

Geologic Hazard Map

Las Animas County

NW1/4NE1/4 Sec. 35, T29S R55W 6th P.M.

Date

6/25/21

Figure No.

Figure 6b

Legend

Dry & Abandoned O&G Well

Conventional Vertical Helium Gas Well

Working Pad Surface (170' x 250')

Oil and Gas Location (180' x 260')

1 Mile from Working Pad Surface

Colorado Geological Survey Landslide Area Data

Parcel Boundary

0 500 1,000 2,000


Feet

N

Data Source:
COGCC GIS Online
Colorado Geological Survey

SELF-CERTIFICATION

I certify that I am qualified according to C.R.S. 23-41-208(1)(b) to have evaluated potential geologic hazards (including avalanche; dam/levee failure; drought; earthquake; erosion and deposition; expansive soils; extreme heat; flood; hail; landslide, mud/debris flow, rockfall (collectively, landslide); lightening; severe wind; subsidence; and tornado) within a 1-mile radius of the proposed Working Pad Surface from data provided by the Colorado Oil and Gas Conservation Commission, Las Animas County Hazard Mitigation Plan, USGS regional geologic mapping, satellite imagery, slope gradient analysis, and a stratigraphic columnar section of the local area. My evaluation meets statutory and regulatory requirements by finding no geologic phenomenon which is so adverse to past, current, or foreseeable construction or land use as to constitute a significant hazard to public health, safety, or to property.



Kurt Constenius, Ph.D.
8790 N. Shadow Mountain Dr.
Tucson, AZ 85704

6/14/2021

Date