



**Twin Bridges Resources LLC**

**Red Rocks**

**Helium Gas Wells**

# **Emergency Response Plan**

**Twin Bridges Resources LLC**  
475 17<sup>th</sup> St., Suite 900  
Denver, CO 80202

April 2021

Table of Contents

**EXECUTIVE SUMMARY .....1**

**1.0 EMERGENCY RESPONSE PLAN ELEMENTS .....2**

1.1 Local Response Agency and Contact.....2

1.2 Date the Plan Was Finalized and Approved by the Local Response Agency .....2

1.3 Directions to the Location.....2

1.4 Location Ingress and Egress .....2

1.5 Legal Description .....2

1.6 Operator Emergency Contact Information .....3

1.7 Mutual Aid Agencies .....3

1.8 Staffing of Local and Mutual Aid Agencies .....3

1.9 Site Setting.....3

1.10 Location Layout.....3

1.11 Equipment and Stored Material .....4

1.12 Sensitive Areas .....4

1.13 Potential Impacts, Prevention, and Mitigation.....4

1.14 Response Equipment.....4

1.15 Health and Safety Action Levels .....4

1.16 Training Coordinated with Local Responders .....4

**Exhibits**

Exhibit 1 – Figure

Exhibit 2 – Coordination with Local Response Agency

## EXECUTIVE SUMMARY

Twin Bridges Resources LLC prepared this Emergency Response Plan for the Red Rocks exploratory helium gas well development in Las Animas County, Colorado. Conventional vertical helium gas wells will be located in T30S R55W, Section 1 and T29S R55W, Section 35. The locations are shown in Exhibit 1.

The wells will contain inert helium gas. Helium is naturally occurring, nonreactive, and non-flammable. If wells are developed for production, helium will flow from the well to a skid-mounted helium purification unit using a 6-inch buried polyethylene flowline. The helium unit will be located approximately 3 miles south of the nearest well pad, along CR 177.9. Concentrated helium will be compressed into cylinders and transported by truck to a commercial helium plant. No hydrocarbons, produced water, or liquids or fuel storage are anticipated as part of well production.

Colorado Oil & Gas Conservation Commission (COGCC) permitting requires that well operators develop an Emergency Response Plan. The plan must be coordinated with the local emergency response agency. Accordingly, Twin Bridges has developed this plan based on the 16 requirements in the COGCC guidance, *Form 2A and Rule 602.j Emergency Response Plan (February 16, 2021)*. The requirements are listed in Table 1.

**Table 1. Required Content for the Emergency Response Plan**

1	Local response agency and contact
2	Date the plan was finalized and approved by the local response agency
3	Directions to the location
4	Location ingress and egress
5	Legal description
6	Operator emergency contact information
7	Mutual aid agencies
8	Local and mutual aid agency staffing
9	Site setting
10	Location layout
11	Equipment and stored material
12	Sensitive areas
13	Potential impacts, prevention, and mitigation
14	Response equipment
15	Health and safety action levels
16	Training coordinated with local responders

## 1.0 EMERGENCY RESPONSE PLAN ELEMENTS

### 1.1 LOCAL RESPONSE AGENCY AND CONTACT

Table 2. Local Response Agency and Contact

Agency	Contact	Contact Information
Kim Area Volunteer Fire Department and Ambulance Service	West McKee, Fire Chief Kimvfire1@gmail.com	Emergency 911
		Non-emergency (719) 469-8415
		Fire Chief (719) 928-1168

### 1.2 DATE THE PLAN WAS FINALIZED AND APPROVED BY THE LOCAL RESPONSE AGENCY

This Emergency Response Plan was coordinated with the local response agency. Exhibit 2 demonstrates the coordination activity and local response.

### 1.3 DIRECTIONS TO THE LOCATION

From Kim, CO:

East on U.S. 160 for 10.75 miles to CR 179

North on CR 179 for 14 miles

Bear left onto CR 177.9

North on CR 177.9 for 3 miles to location sign on the right. Access to Red Rocks #1-13 is approximately 1/3 mile southeast.

Continue north on CR 177.9 for ¾ mile to Red Rocks #35-15 on the right.

### 1.4 LOCATION INGRESS AND EGRESS

Travel approximately 1/3 mile southeast from CR 177.9 on unsecured dirt road to Red Rocks #1-13.

Travel approximately 300' southeast from CR 177.9 on unsecured dirt road to Red Rocks #35-15.

### 1.5 LEGAL DESCRIPTION

Red Rocks #1-13

NW ¼, NW ¼ Section 1, T30S R55W

37.465260 N / -103.53356 W

Red Rocks #35-15

Center of N ½ Section 35, T29S R55W

37.478380 N / -103.543750 W

## 1.6 OPERATOR EMERGENCY CONTACT INFORMATION

Table 3. Operator Emergency Contact Information

Role	Contact	Contact Information
Principal	Tom Wallace	(303) 886-5623 <a href="mailto:tcw@twinbridgesllc.com">tcw@twinbridgesllc.com</a>
Lands	Denise Slavens	(720) 930-9181 <a href="mailto:dslavens@twinbridgesllc.com">dslavens@twinbridgesllc.com</a>
Local Operator	c/o Tom Wallace	(303) 886-5623 <a href="mailto:tcw@twinbridgesllc.com">tcw@twinbridgesllc.com</a>
Landowner	Tom Dahlberg	11805 Prestwick Road Belvidere, IL 61008

## 1.7 MUTUAL AID AGENCIES

Las Animas County Sheriff's Office  
Derek Navarette, Sheriff & Fire Marshall  
[navarette@lasosheriff.org](mailto:navarette@lasosheriff.org)  
(719) 846-2211 (Non-emergency)  
(719) 846-2211 (Sheriff)

## 1.8 STAFFING OF LOCAL AND MUTUAL AID AGENCIES

The nonprofit Kim Area Volunteer Fire Department is staffed with volunteer emergency responders. It provides ambulance and fire department services in the Kim, Colorado area. The Las Animas County Sheriff's Office provides law enforcement and public safety services in Las Animas County. It is staffed by the sheriff, undersheriff, lieutenant, and nine sergeants and deputies, according to current information.

## 1.9 SITE SETTING

The well pads and surrounding area are shown in Exhibit 1. The area historically was used for ranching. It is dry grassland, sparsely vegetated with blue stem, smooth brome, and quack grass. There is a nearby plugged and abandoned oil and gas well, formerly operated by Phillips Petro. Multiple dirt two-track roads crisscross the area. The closest house is located approximately 2.6 miles away, along CR 179.

## 1.10 LOCATION LAYOUT

The well pad size for each well will be approximately 1 acre to accommodate drilling equipment and material during well development. It will be reduced to 0.2 acre during production. The well pad will contain a single vertical helium gas wellhead.

### **1.11 EQUIPMENT AND STORED MATERIAL**

During well development, the well pad will have equipment needed for minor grading, a drill rig, water truck, pipe truck and trailer, winch truck, and light duty trucks. An estimated 2,000-gallon diesel fuel tank with integrated steel secondary containment will be on site during well drilling. It will be removed when well development is complete.

During production, the well pad will contain only the helium gas wellhead and a buried polyethylene flowline. The well pad will require no additional equipment or site power. Because the well is not anticipated to produce hydrocarbons or produced water, the site will have no storage tanks or other equipment characteristic of oil and natural gas wells. Small amounts of lubricants may be stored on site to service the well.

### **1.12 SENSITIVE AREAS**

The locations have no sensitive areas. The nearest ranch house is approximately 2.6 miles to the south. The nearest public road is CR 177.9. CR 177.9 is a sparsely traveled dirt road.

### **1.13 POTENTIAL IMPACTS, PREVENTION, AND MITIGATION**

Helium is inert, nonreactive, and non-flammable. The wells do not pose a hazard for fire, explosion, or to public health from air emissions. Historical well log information in the area indicates that the wells will not produce natural gas, hydrocarbons, or water.

Any lubricants needed to maintain the well will be properly stored to prevent exposure and risk of spills. Site equipment will be maintained in good working condition. Equipment will be operated according to training and manufacturer specifications.

### **1.14 RESPONSE EQUIPMENT**

There will be no material on site that poses a risk of spills or contamination. If a significant incident were to occur, Twin Bridges would contract with a third-party provider to manage the incident and any potential environmental contamination.

### **1.15 HEALTH AND SAFETY ACTION LEVELS**

The well driller and other personnel will be on site during well development. Their presence on site will provide for continuous communication about site conditions and site safety. During production, a site operator will maintain and monitor the site approximately 2-3 times per week.

An operation and maintenance log is anticipated to identify health, safety, maintenance, and repair issues. The log will be used to record repairs, any preventative maintenance scheduling, and incidents. This information will help to identify site conditions requiring attention.

### **1.16 TRAINING COORDINATED WITH LOCAL RESPONDERS**

Site operators will be instructed to keep the wellheads in good working order and the sites free of weeds or debris that pose a risk of fire. Vehicles will carry safety equipment, such as a fire extinguisher and shovel. This equipment allows personnel to extinguish a small, inadvertent grass fire within their capability to do so. Types of situations that site operators may encounter are:

Accident from operating equipment

Medical emergency

Slips, trips, falls

Insect stings and bites

Weather-related incident

Motor vehicle accident

Grass fire

Through this Emergency Response Plan, potential situations at a well site are being coordinated with the local response agency for agency input.

Most accidents consist of minor injuries, such as cuts, scrapes, trips, and sprains. Most medical incidents typically involve cold or heat exposure, sunburn, and insect stings and bites. Vehicles operating at the site will be required to carry general first aid supplies. On-site self-treatment is typically sufficient for an incident until personnel are off site for any additional follow up and notification to the Twin Bridges supervisor. Serious incidents may require a 911 response.

Personnel will be instructed that the nearest major medical facility is the Mt. San Rafael Hospital in Trinidad, CO. It is approximately 77 miles away. An air ambulance can serve the well site for critical care. Its base in Pueblo, CO has a range of 150 miles.

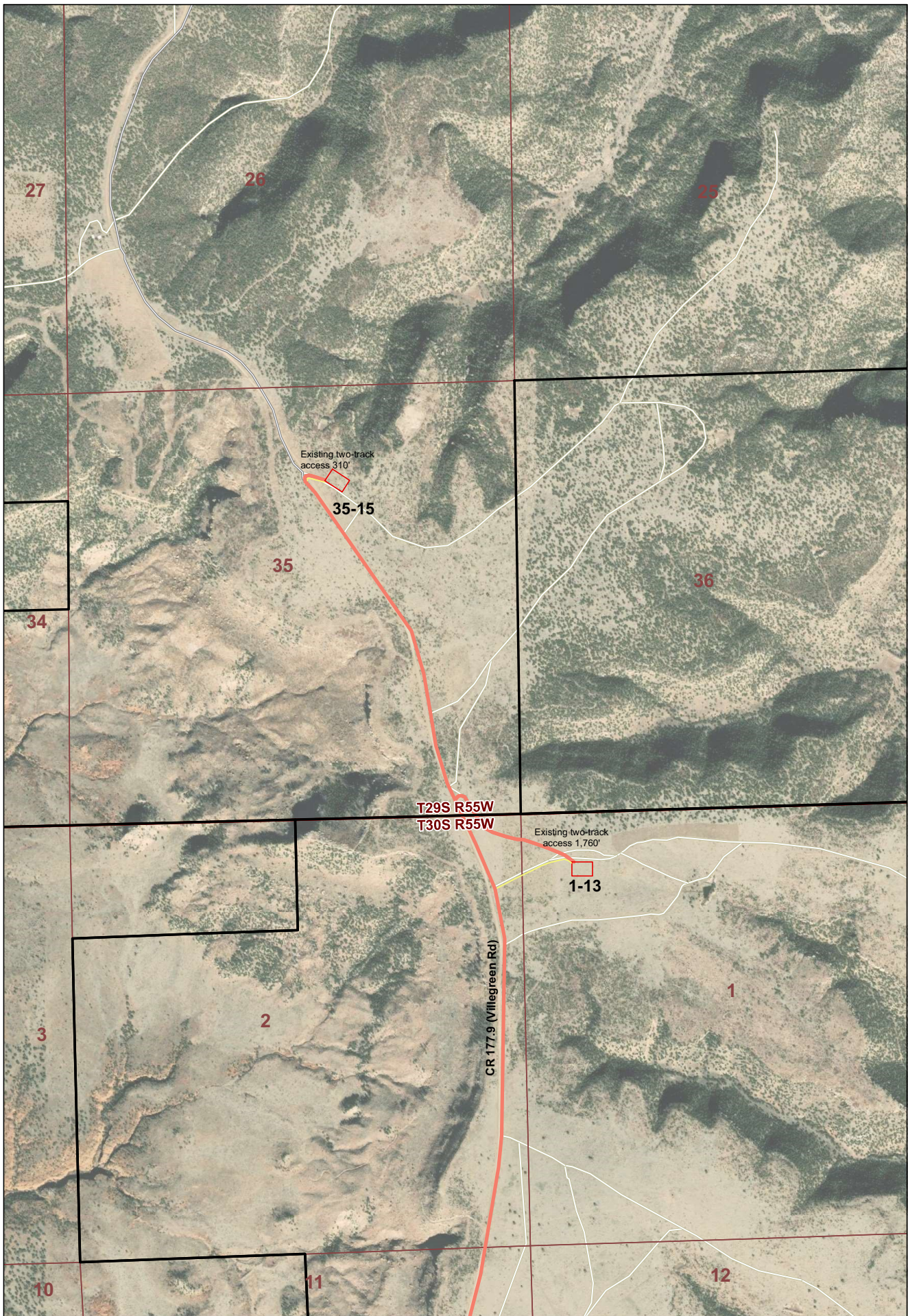
**Table 4. Emergency Medical Services**

<b>Service</b>	<b>Location</b>	<b>To Access</b>
Emergency Response	911	
24-hour Emergency Room	Mt. San Rafael Hospital 410 Benedicta Avenue Trinidad, CO 81082 (719) 846-3305	S on CR 177.9 and CR 179 to US 160 R on US 160 for 60 miles to Trinidad L on Benedicta Ave for 0.5 miles Hospital is on the L
Flight for Life	Lifeguard Four Station St. Mary-Corwin Medical Center Pueblo, CO	Transport requests arranged by Medical personnel Ambulance service Fire department or law enforcement

# **Exhibit 1**

## **Figure**





Aota Technical, LLC

**Twin Bridges Resources LLC  
Red Rocks**

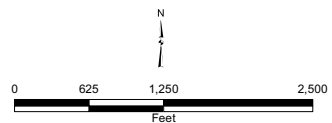
**Access and Flowline**

Date  
4/22/21

Figure No.  
Figure 4

**Legend**

- Conventional Vertical Helium Gas Well Location
- Access Route / Alignment for Future Buried Helium Gas Flowline
- Buried Helium Gas Flowline
- Parcel Boundary



Data Source:  
COPCC GIS Online



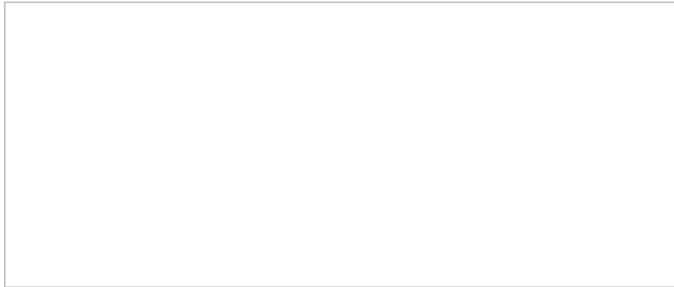
## **Exhibit 2**

# **Coordination with Local Response Agency**

---

**From:** West McKee <kimvfire1@gmail.com>  
**Sent:** Tuesday, April 20, 2021 12:25 PM  
**To:** Denise Slavens <dslavens@twinbridgesllc.com>  
**Subject:** Re: Notice of proposed helium gas well

I acknowledge your coordination with our fire dept. and and i dont have any questions at this time.



On Mon, Apr 19, 2021 at 8:14 AM Denise Slavens <[dslavens@twinbridgesllc.com](mailto:dslavens@twinbridgesllc.com)> wrote:

Chief McKee,

I'm coordinating with you on a proposed helium gas well development by Twin Bridges Resources LLC. Twin Bridges is proposing to develop up to three helium gas wells on private ranch land northwest of Kim, on the east side of County Road 177.9 (Villegreen Road). The location is shown on the figure in Exhibit 1 of the attached Emergency Response Plan. These are exploratory conventional vertical wells for helium gas. Helium is inert, nonreactive, and non-flammable. Unlike an oil or gas well, the helium gas wells are not expected to contain hydrocarbons or produced water. The site will not have storage tanks. If the first well is successful, helium gas will be piped using a buried polyethylene flowline to a skid-mounted helium unit to purify and compress the helium into cylinders for truck transport to a helium liquefaction plant in Cheyenne Wells, CO. Colorado Oil & Gas Conservation Commission permitting requires that operators prepare an Emergency Response Plan and coordinate it with the local emergency response agency. After you have had a chance to review the information, please let me know if you have questions or would like a meeting with Twin Bridges. If you feel that a meeting isn't necessary, your response to this email will provide a demonstration of Twin Bridges' coordination with your agency. Please feel free to reach me at [dslavens@twinbridgesllc.com](mailto:dslavens@twinbridgesllc.com) or (720) 407-6509.

Thank you for your attention to this matter.

*Denise Slavens*  
*Land/Accounting Manager*  
*Twin Bridges LLC*  
*475 17<sup>th</sup> St., Suite 900*  
*Denver, CO 80202*  
*Direct Line: 720-407-6509*

**Twin Bridges LLC**