

TABLE 1
SOIL SAMPLE LOCATIONS
NOBLE ENERGY, INC. - HSR CHARLTON 08-20

Soil Sample ID	Date	PID Reading (ppm)	Visual	Olfactory	Sample Type (Grab/Lab)	Latitude	Longitude	PDOP
SS01@2.5'	09/13/21	1500	HC Staining	Strong HC Odor	Lab	40.30011562	-104.6805058	1.0
SS02@2.5'	09/13/21	367.8	HC Staining	HC Odor	Lab	40.30008575	-104.6804389	1.0
SS03@2.5'	09/13/21	17.6	HC Staining	Slight HC Odor	Lab	40.3000316	-104.68045	1.0
SS04@2.5'	09/13/21	25.8	HC Staining	Strong HC Odor	Lab	40.30006257	-104.6805375	1.1
FS01@4'	09/13/21	6.4	HC Staining	HC Odor	Lab	40.3000748	-104.680493	NC
FL01-A@3'	09/13/21	9.3	HC Staining	Strong HC Odor	Lab	40.30010971	-104.6805364	1.1
FL01-B@3'	09/13/21	3.3	HC Staining	Slight HC Odor	Lab	40.30026496	-104.6806384	1.0
BG01@2.5'	09/13/21	1.5	Organic Content	Organic Odor	Grab	40.30011362	-104.6802754	1.1
BG01@4'	09/13/21	1.00	Organic Content	Organic Odor	Grab	40.30011362	-104.6802754	1.1

Notes:

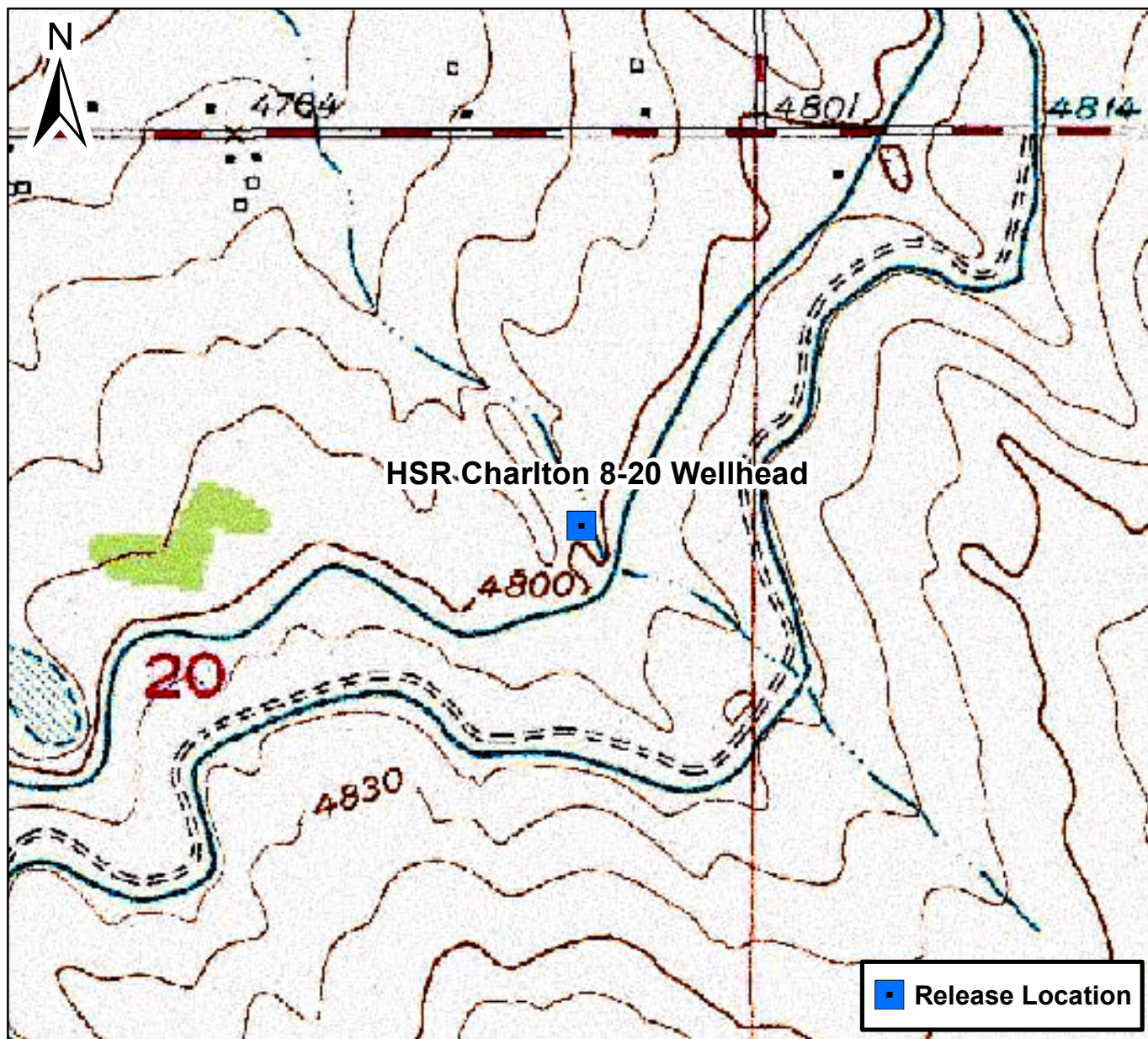
PID = Photo-ionization detector

ppm = parts per million

PDOP = Position dilution of precision

NC = Not collected

1.) Latitude and longitude coordinates will be provided in decimal degrees with an accuracy and precision of 5 decimals of a degree using the North American Datum ("NAD") of 1983




0 875 1,750 Feet

Figure 1



Site Location Map
 HSR Charlton 8-20 Wellhead
 SENE S20 T4N R65W
 Weld County, Colorado







DATE:	09/13/2021	 TASMAN GEOSCIENCES	Tasman Geosciences, Inc. 6855 W 119 th Avenue Broomfield, CO 80020	Noble Energy, Inc. – DJ Basin HSR Charlton 08-20 Wellhead SENE, Section 20, Township 4 North, Range 65 West Weld County, Colorado	Wellhead & Flowline Closure Site Overview Map (09/13/2021)	FIGURE 2
DESIGNED BY:	JW					
DRAWN BY:	CA					

Photographic Log

									
Equipment ID: SS01		Equipment Type: Wellhead		Equipment ID: SS02		Equipment Type: Wellhead			
Material: Steel		Volume:	Contents: Oil/Gas/Water		Material: Steel		Volume:	Contents: Oil/Gas/Water	
Notes/Conditions: SS01 @2.5' north sample location. HC staining and odor.					Notes/Conditions: SS02 @2.5' east sample location. HC Staining and odor.				

Photographic Log

																							
Equipment ID:SS03		Equipment Type: Wellhead		Equipment ID:SS04		Equipment Type: Wellhead																	
Material:Steel		Volume:		Material: Steel		Volume:		Contents:Oil/Gas/Water		Contents:Oil/Gas/Water													
Notes/Conditions: SS03@2.5' south sample location. HC staining and odor.												Notes/Conditions: SS04@2.5'. West sample location. Black and gray staining with a HC odor.											

Photographic Log

					
Equipment ID:FS01		Equipment Type:Wellhead		Equipment ID:FL01-A	
Material:Steel		Volume:	Contents:Oil/Gas/Water	Equipment Type:Flowline	
Notes/Conditions:FS01 @4' base sample location. Black and gray stains with HC odor.				Material:Steel	
				Volume:	
				Contents:Oil/Gas/Water	
				Notes/Conditions:FL01-A @3' flow line sample location. Black and gray training with a HC odor.	

Photographic Log


Equipment ID: FL01-B

Equipment Type: Flowline

Material: Steel

Volume:
Contents: Oil/Gas/Water

Notes/Conditions: FL01-B @ 3' flowline sample location at separator. Some gray staining with a slight HC odor.

Equipment ID: BG01

Equipment Type:
Material:
Volume:
Contents:
Notes/Conditions: Background sample BG01 @ 2.5' sample location taken SE of site.

Photographic Log


Equipment ID:BG01

Equipment Type:
Material:
Volume:
Contents:
Notes/Conditions: Background sample BG01@4' sample location taken SE of site.

Equipment ID:GW01

Equipment Type: Wellhead

Material:
Volume:
Contents:
Notes/Conditions: GW01 groundwater sample location.