

XEM GAMMA RAY

1in/100ft Measured Depth

Final Print

Recorded Mode

Schlumberger

Company: PDC Energy Inc

Well: Vega 2N

Field Name: Wattenberg

Country Name: United States

State Name: Colorado

County Name: Weld

Latitude: 40°15'19.017"N

Longitude: 104°42'22.881"W

Spud Date: 30-Aug-2020

Log Interval: 1690.50--15839.13(ft)

Depth Source: Driller's Depth

Log Measured From: Drill Floor

Drill Floor Elevation: 4995.00(ft)

Ground Level Elevation: 4967.00(ft)

Permanent Datum: Sea Level

API Number: 05-123-48464

Rig Name: Ensign 142

Rig Type: Land

Job Number: 21CC00162

Print Type: Final Print

Northing: 1336832.31 (ft)

Easting: 3221506.99 (ft)

Coordinate System: NAD83 Colorado State
Plane, Northern Zone, US
Feet

Disclaimer

THE USE OF AND RELIANCE UPON THIS RECORDED-DATA BY THE HEREIN NAMED COMPANY (AND ANY OF ITS AFFILIATES, PARTNERS, REPRESENTATIVES, AGENTS, CONSULTANTS AND EMPLOYEES) IS SUBJECT TO THE TERMS AND CONDITIONS AGREED UPON BETWEEN SCHLUMBERGER AND THE COMPANY, INCLUDING: (a) RESTRICTIONS ON USE OF THE RECORDED-DATA; (b) DISCLAIMERS AND WAIVERS OF WARRANTIES AND REPRESENTATIONS REGARDING COMPANY'S USE AND RELIANCE UPON THE RECORDED-DATA; AND (c) CUSTOMER'S FULL AND SOLE RESPONSIBILITY FOR ANY INFERENCE DRAWN OR DECISION MADE IN CONNECTION WITH THE USE OF THIS RECORDED-DATA.

Operational Run Summary

Notes

Run 1: Missing gamma from 2075 to 2095 are due to the depth tracking jumps during drilling where acquisition system has not detected the depth reference.

Run 1 (Bit Size: 8.5 in)

DateTime Log Started	16-Jun-2021 21:55:52	DateTime Log Finished	18-Jun-2021 02:44:47
Start Depth (ft)	1715	Stop Depth (ft)	8864
Mud Type	Oil Based Mud	Mud Density (lbm/gal)	10.2
Potassium (%)	0	Barite	Yes
GR Sensor Offset (ft)	24.91	Calibration Coefficient	0.52
DNI Sensor Offset (ft)	20.32		

Run 2 (Bit Size: 8.5 in)

DateTime Log Started	18-Jun-2021 04:25:39	DateTime Log Finished	19-Jun-2021 15:39:12
Start Depth (ft)	8864	Stop Depth (ft)	15839
Mud Type	Oil Based Mud	Mud Density (lbm/gal)	10.2

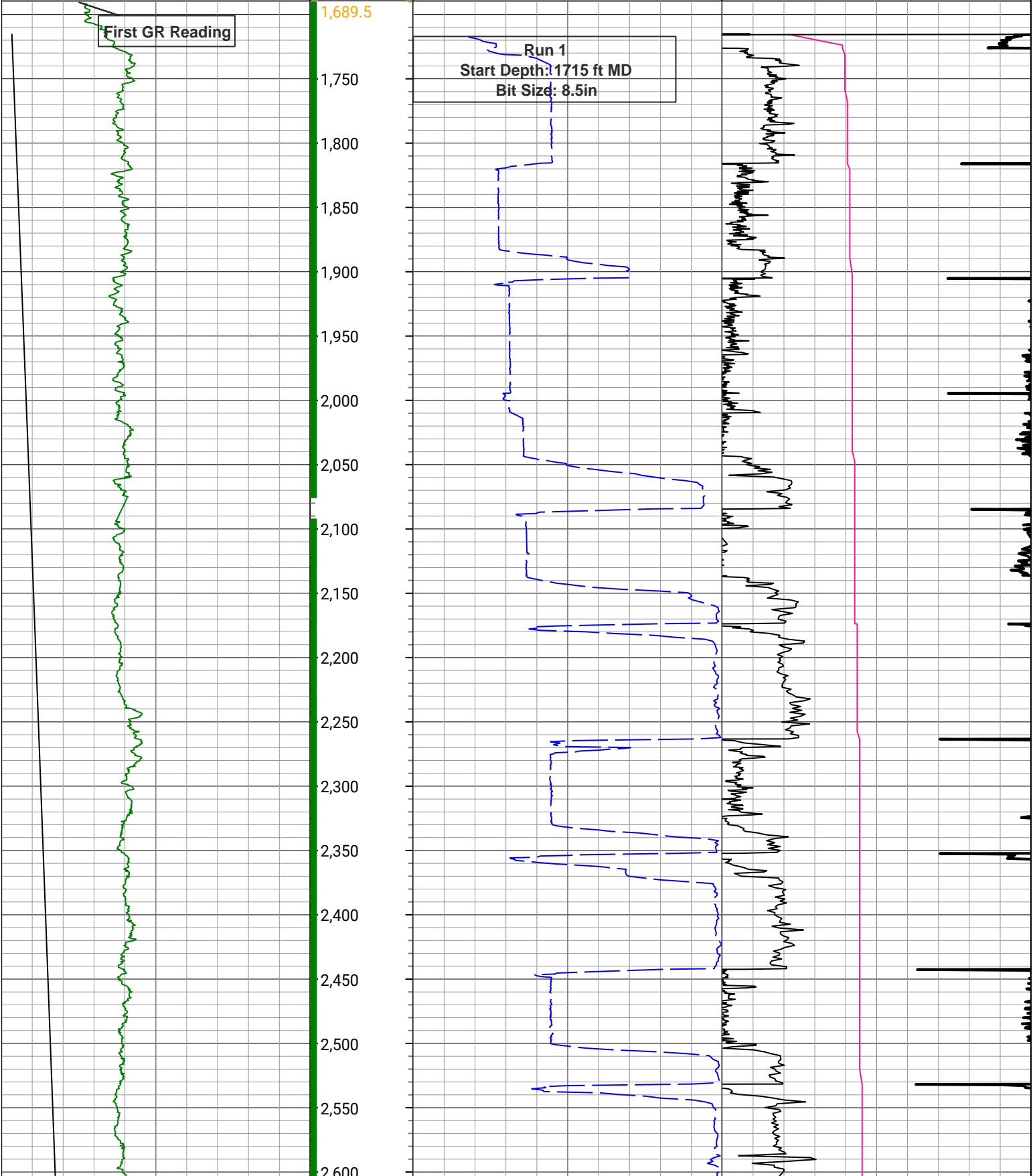
Potassium (%)	0	Barite	Yes
GR Sensor Offset (ft)	24.89	Calibration Coefficient	0.52
DNI Sensor Offset (ft)	20.3		

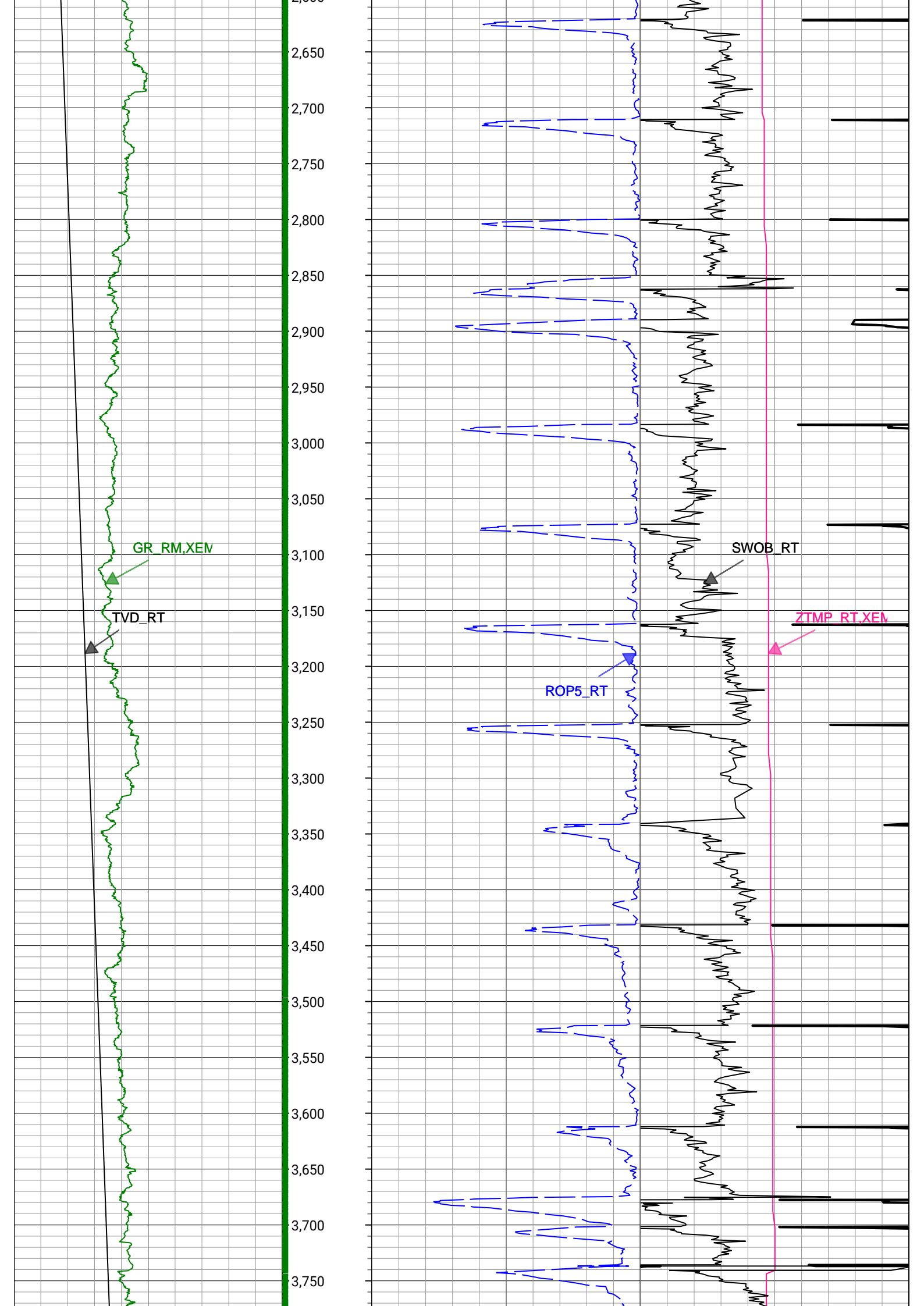
Log

Description: XEM GAMMA RAY Format: PDC_XEM_St Index Scale: 1in/100ft Index Unit: ft Index Type: Measured Depth

Creation Date: 22-Jun-2021

TVD_RT			Depth	ROP5_RT			ZTMP_RT,XEM		
1,500	ft, Borehole	7,500		0	ft/h, Borehole	1,100	0	degF, Borehole	300
GR_RM,XEM			in : ft	SWOB_RT					
0	gAPI, Splice	300		0	1000 lbf, Borehole	50			





GR_RM,XEM

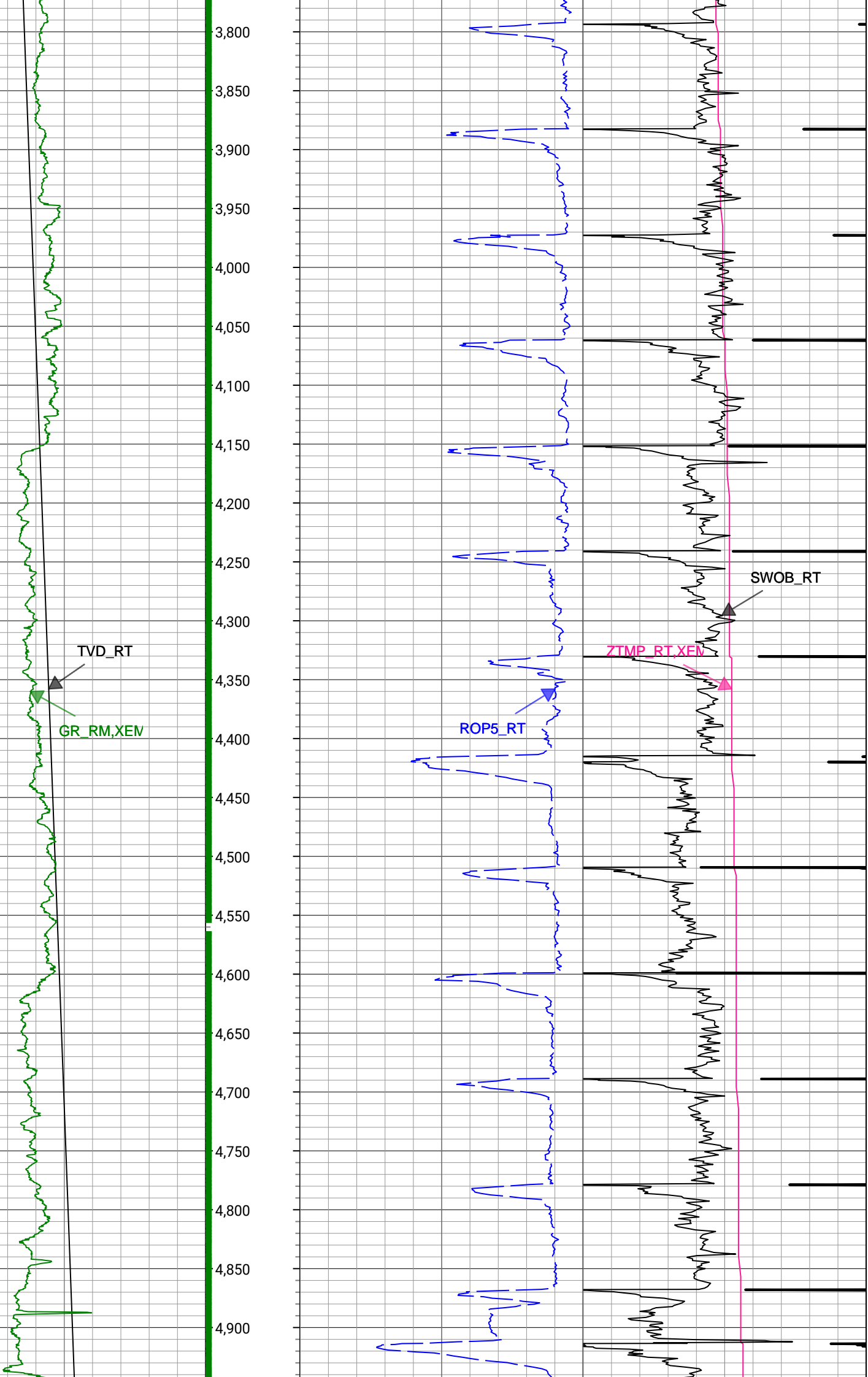
TVD_RT

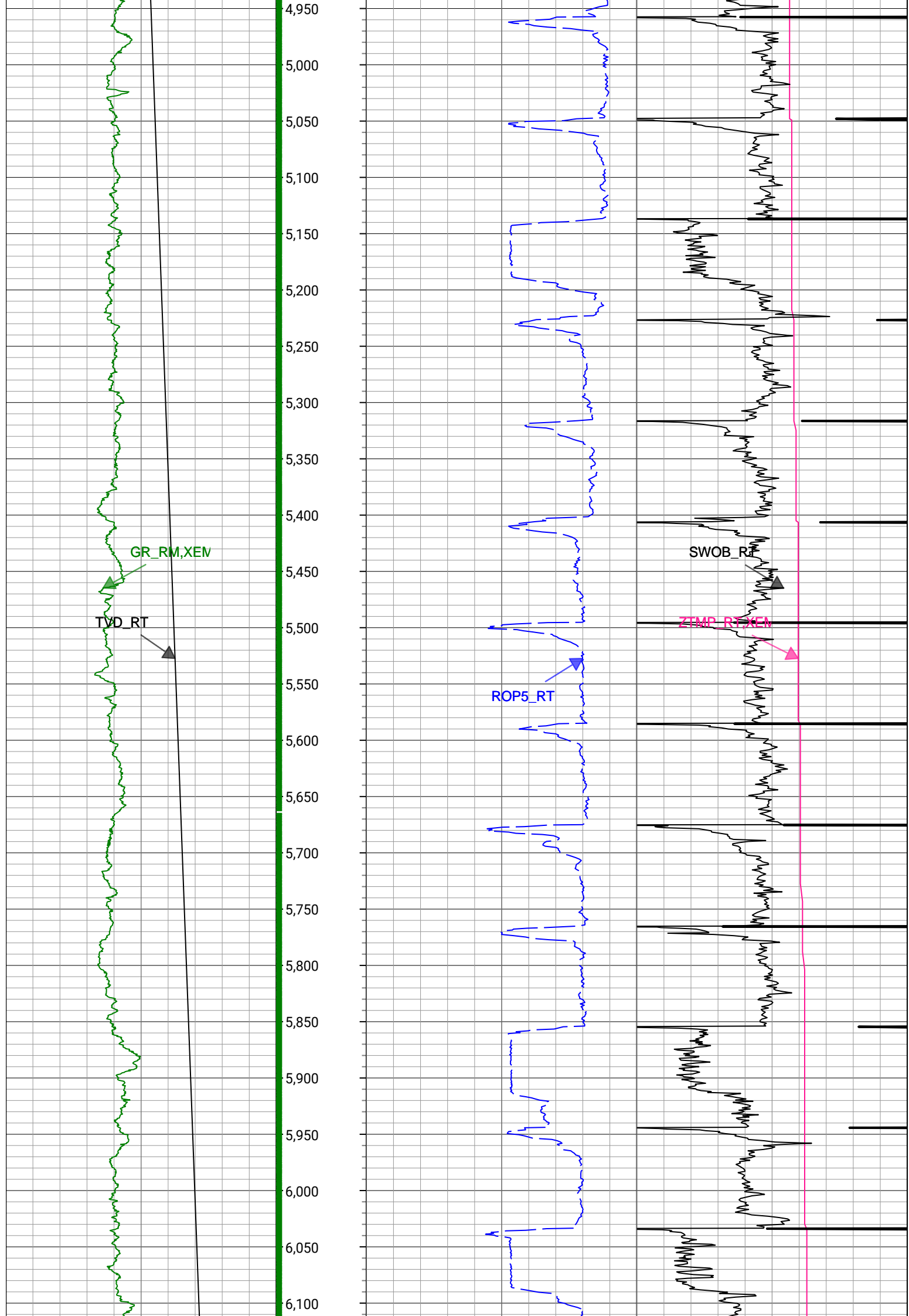
ROP5_RT

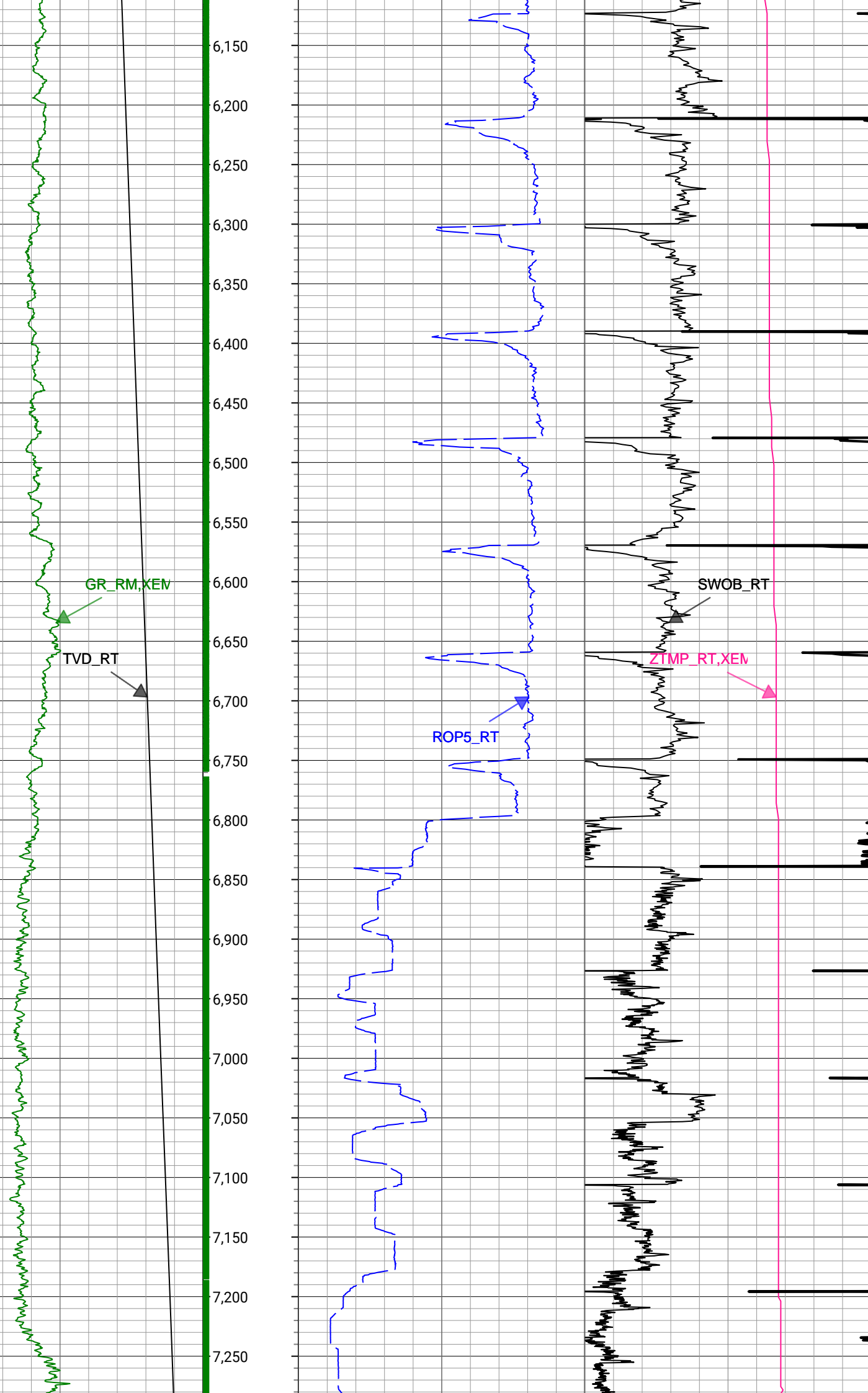
SWOB_RT

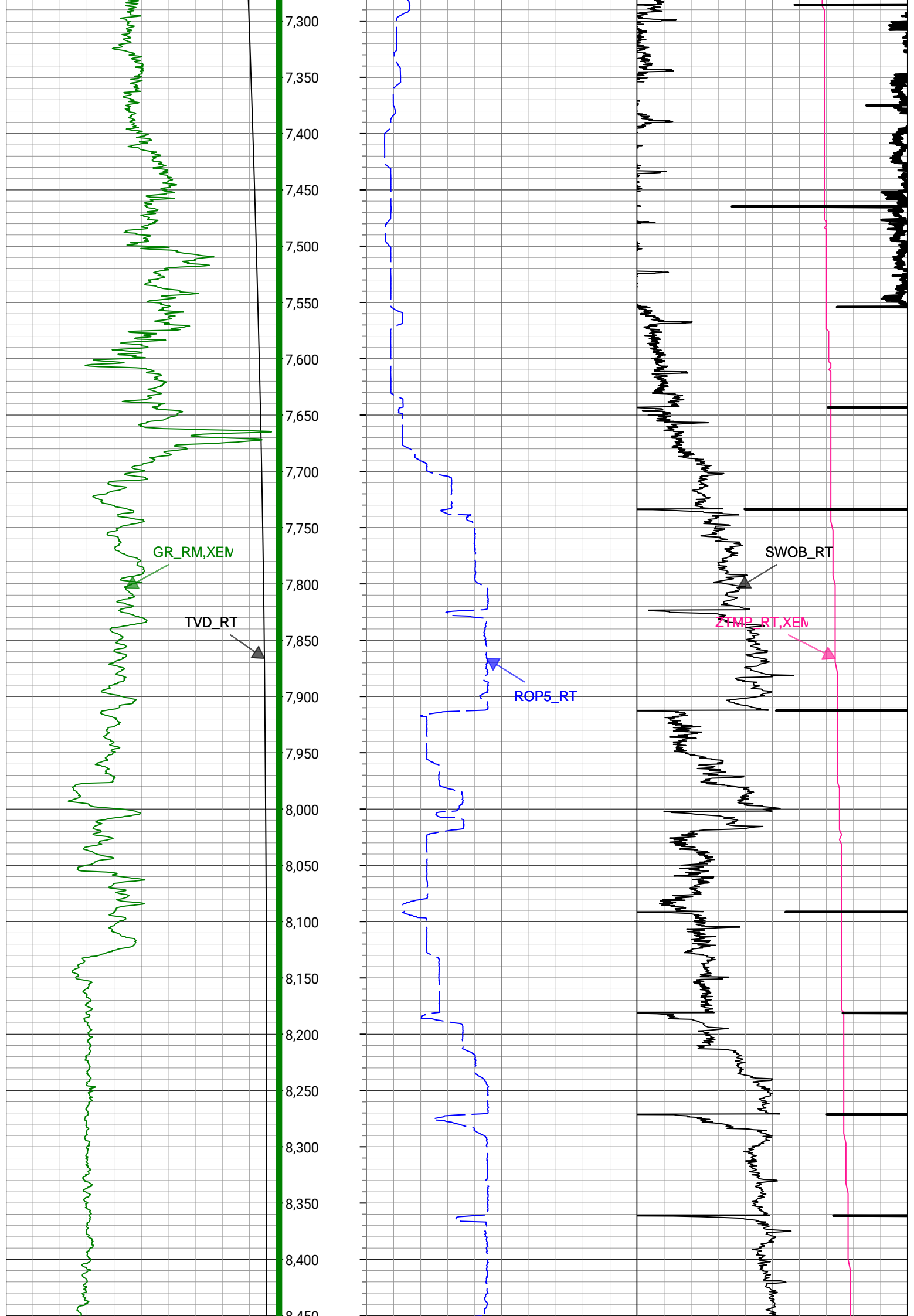
ZTMP_RT,XEM

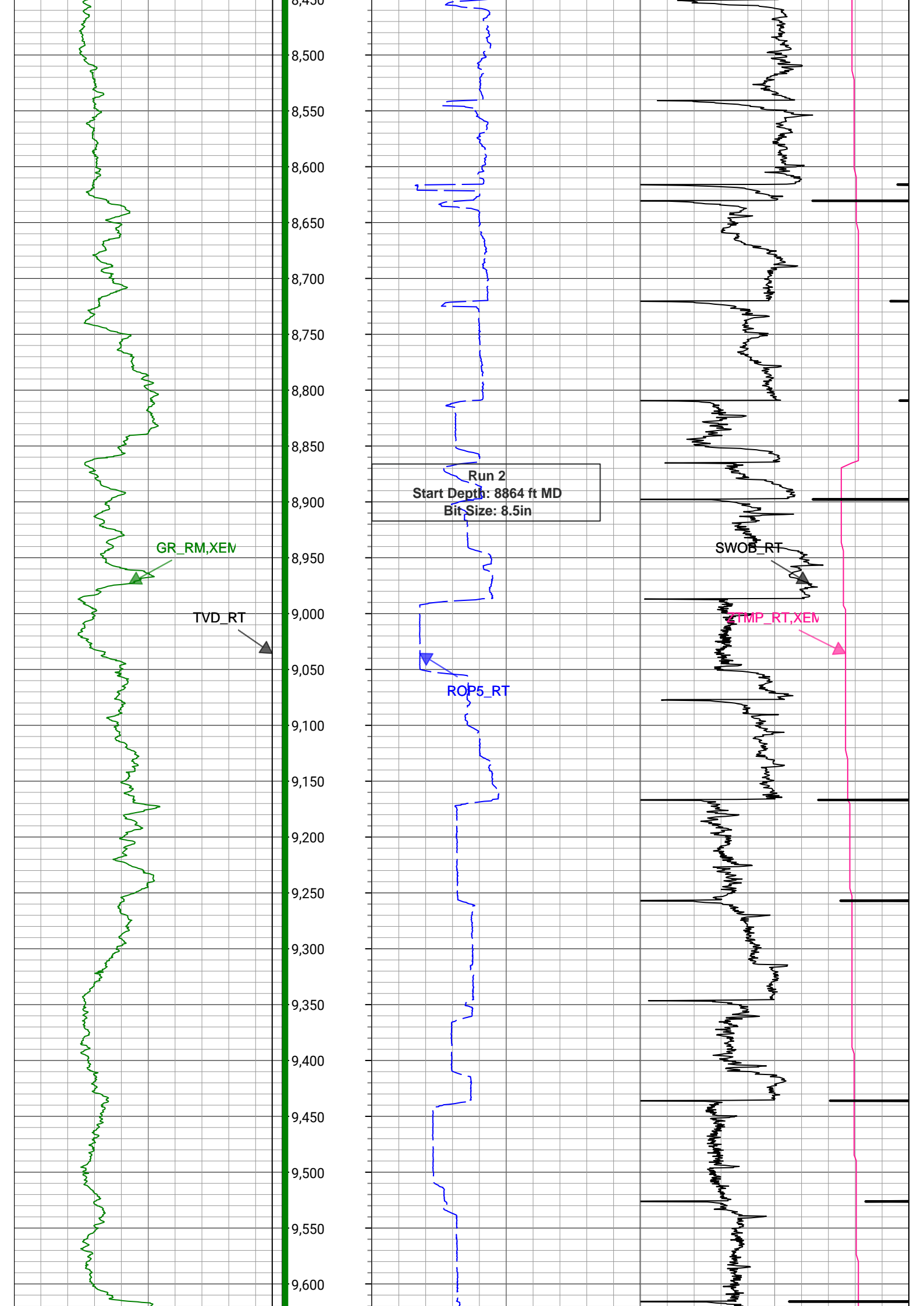
2,650
2,700
2,750
2,800
2,850
2,900
2,950
3,000
3,050
3,100
3,150
3,200
3,250
3,300
3,350
3,400
3,450
3,500
3,550
3,600
3,650
3,700
3,750

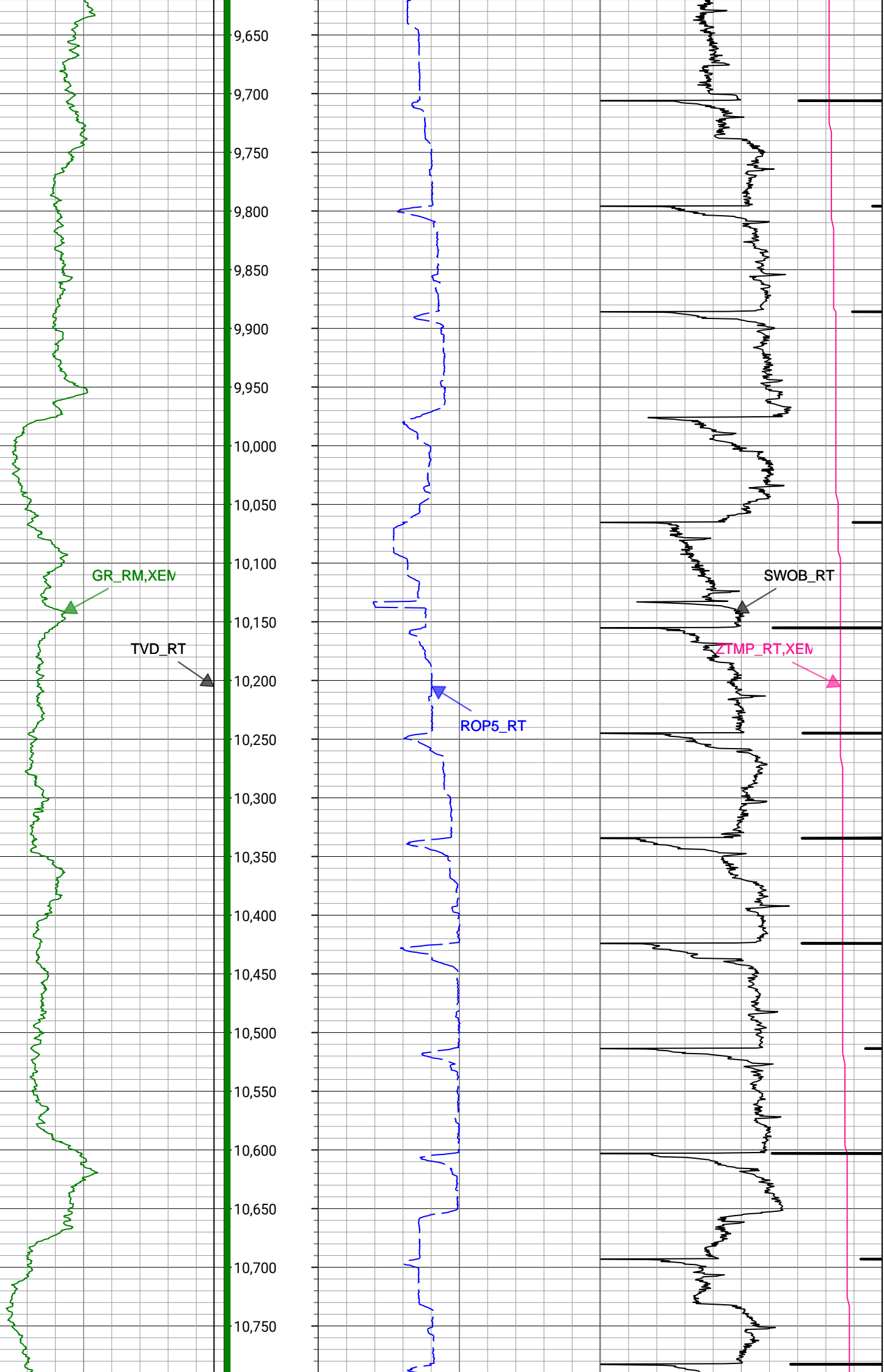


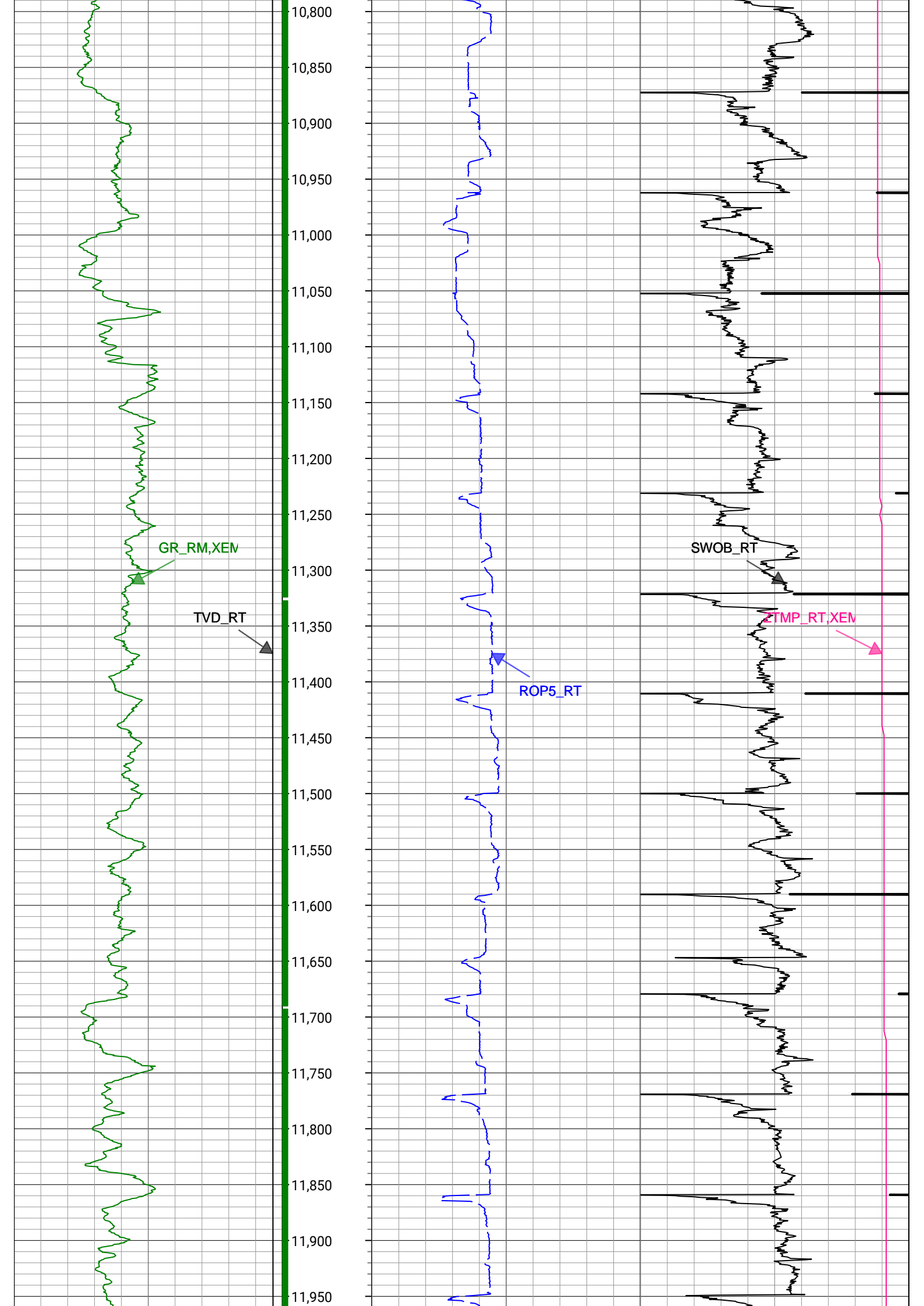


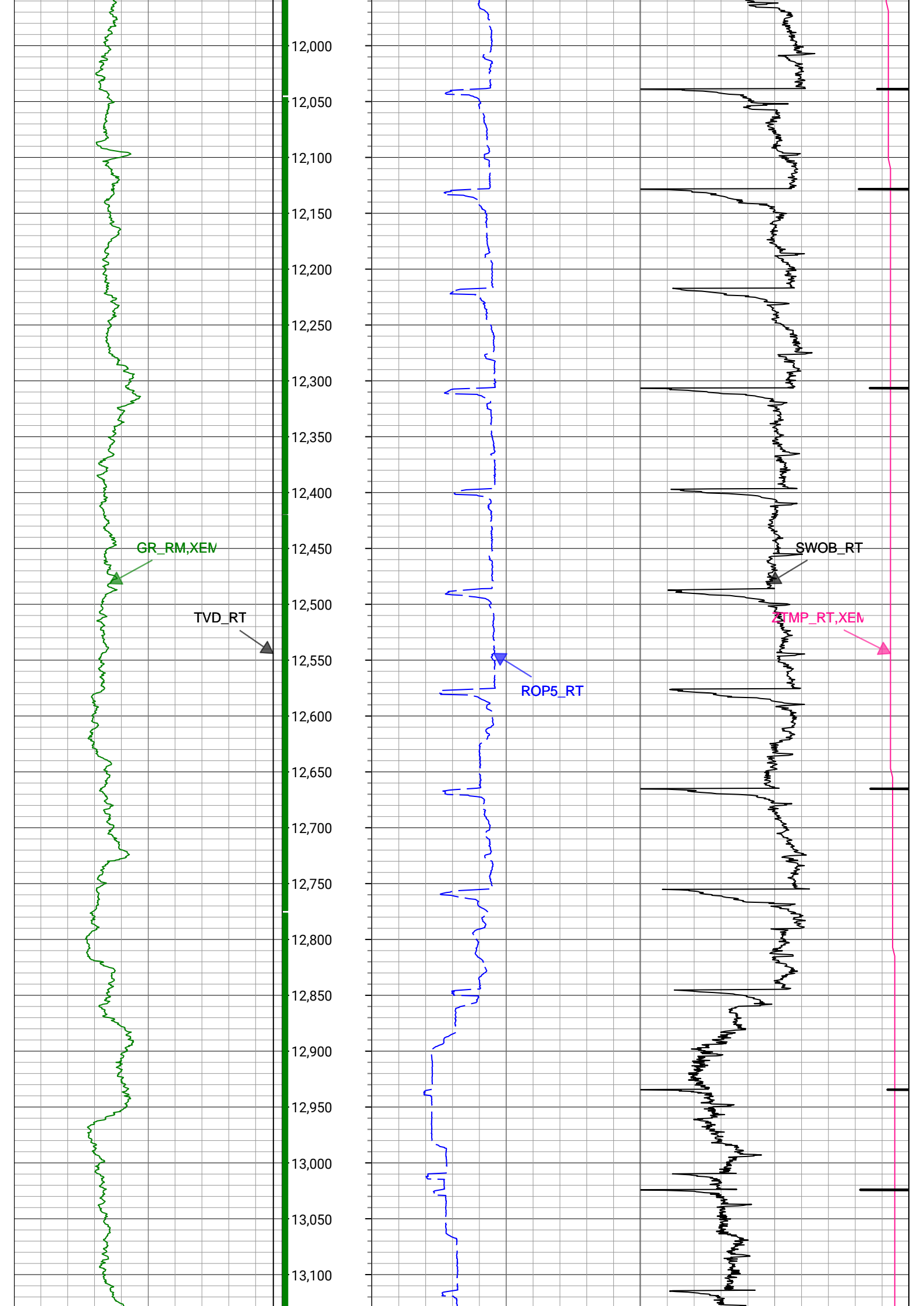


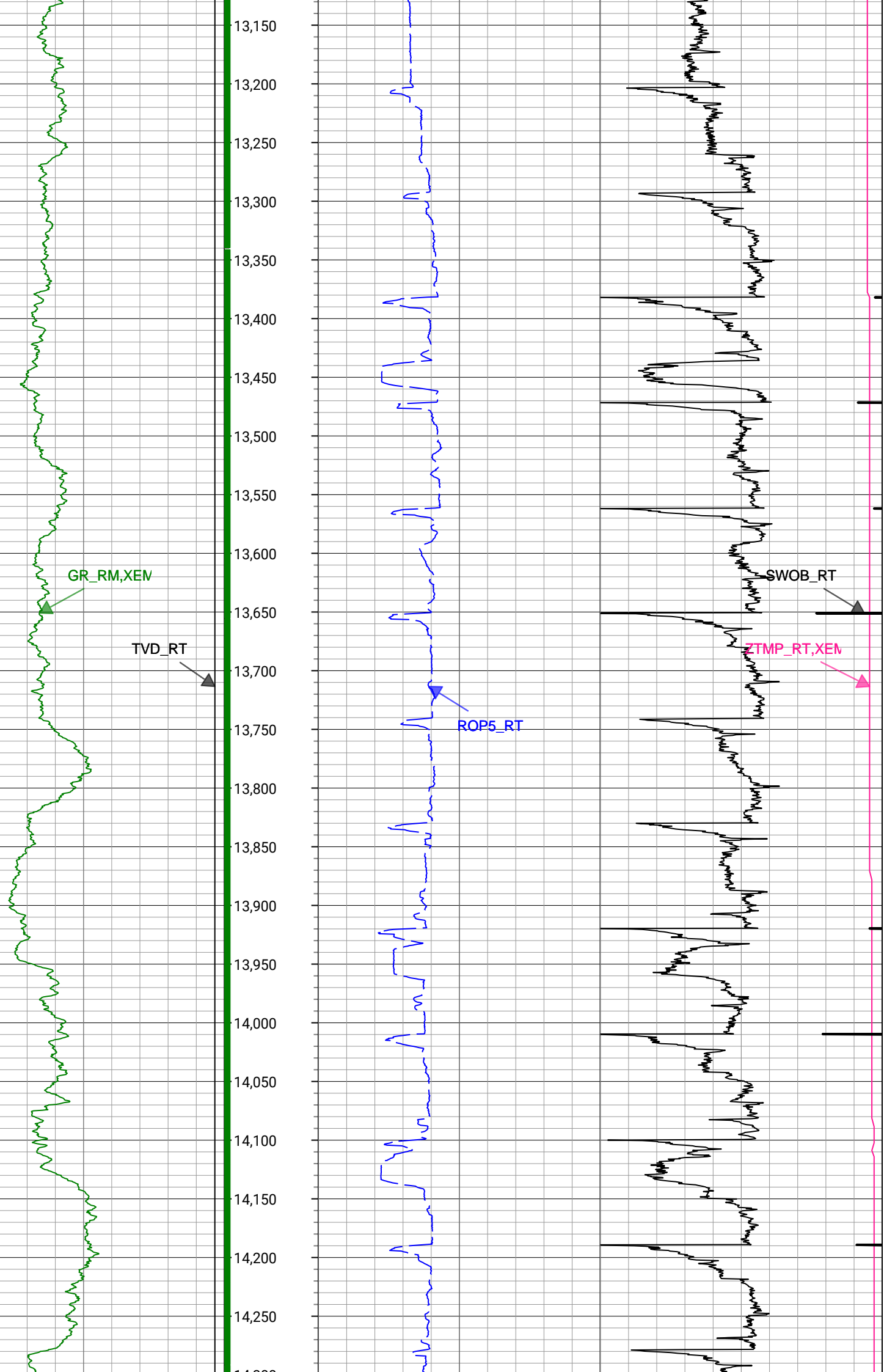


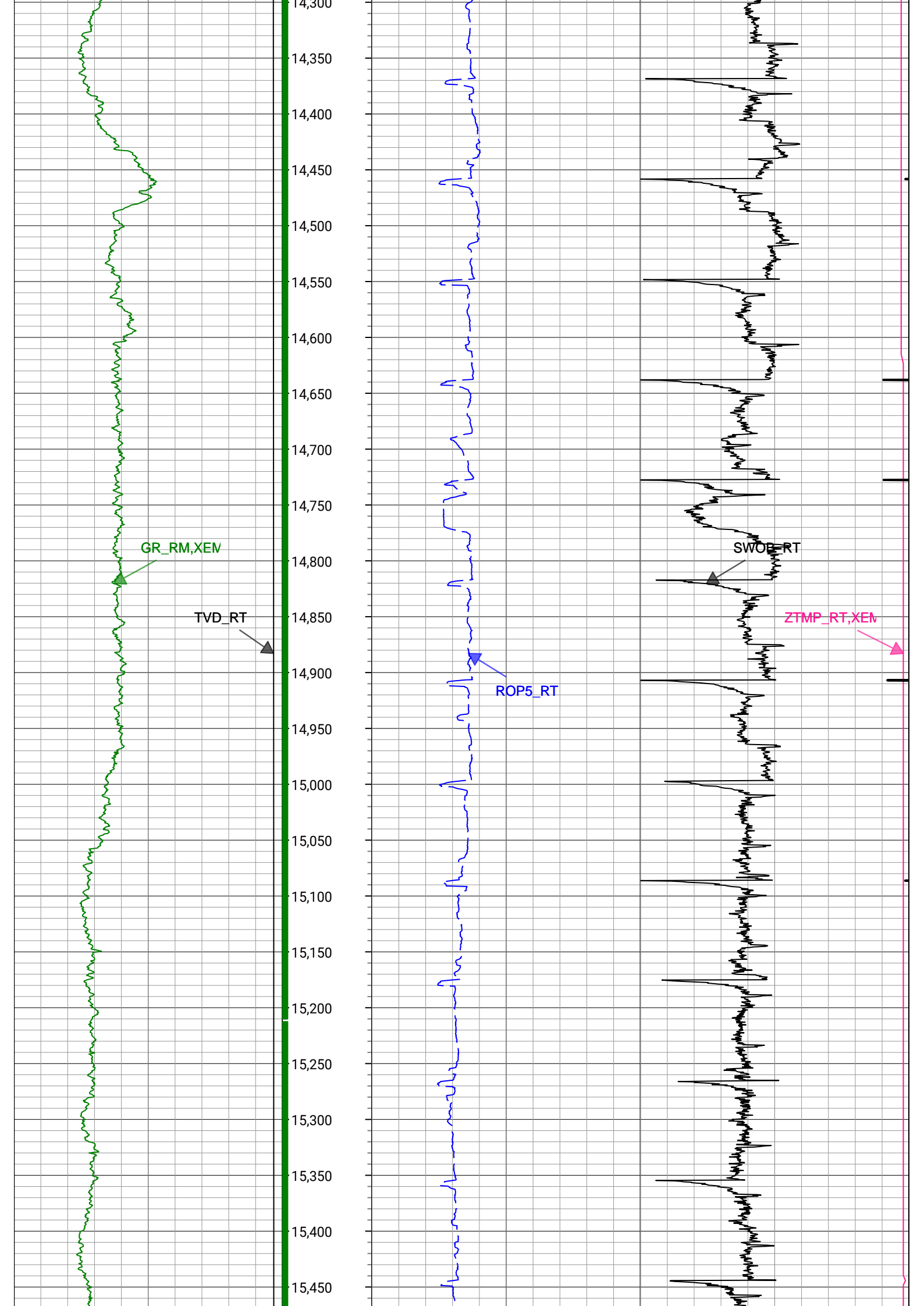


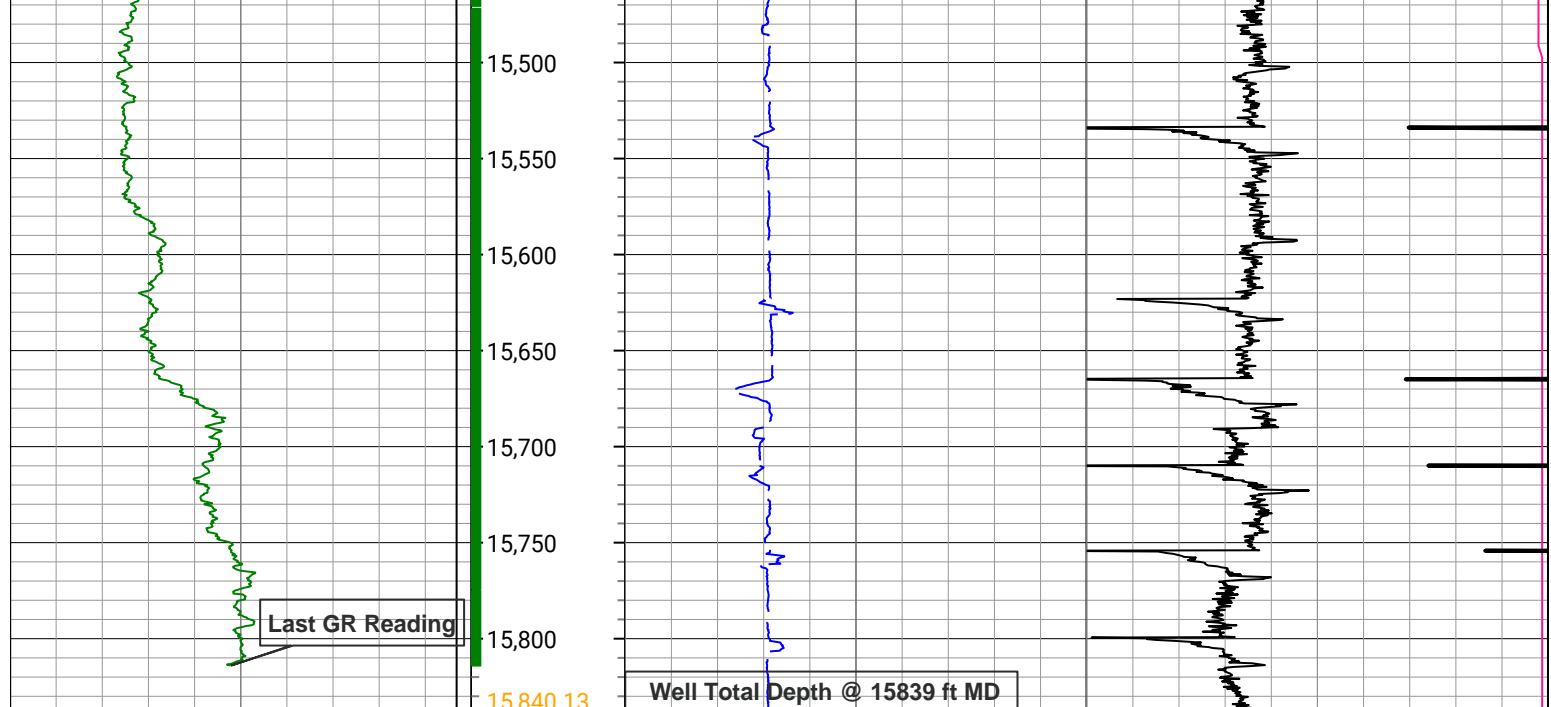












1,500	TVD_RT	7,500	Depth (ft)	0	ROP5_RT	1,100	0	ZTMP_RT,XEM	300
ft, Borehole				ft/h, Borehole			degF, Borehole		
0	GR_RM,XEM	300		0	SWOB_RT	50	1000 lbf, Borehole		

Description: XEM GAMMA RAY Format: PDC_XEM_St Index Scale: 1in/100ft Index Unit: ft Index Type: Measured Depth
 Creation Date: 22-Jun-2021

Survey Record

Survey Calculation

North Reference: True North

Tie In Point

Measured Depth: 0(ft) Inclination: 0(deg) Azimuth: 0(deg)
 True Vertical Depth: 0(ft) North Displacement: 0(ft) East Displacement: 0(ft)

D&I Inits - Run - 1

Geomagnetic Model: HDGM 2021 Geomagnetic Date: 16-Jun-2021 17:00:00
 Location B: 51769(nT) Location G: 998.997(mgn)
 Magnetic Dip: 66.55(deg) Magnetic Dec: 7.853(deg)
 Total Correction: 7.853

D&I Inits - Run - 2

Geomagnetic Model: HDGM 2021 Geomagnetic Date: 14-Jun-2021 17:00:00
 Location B: 51769(nT) Location G: 998.997(mgn)
 Magnetic Dip: 66.55(deg) Magnetic Dec: 7.853(deg)
 Total Correction: 7.853

MD(ft)	Incl(deg)	Azim(deg)	TVD(ft)	V Sec(ft)	N/-S(ft)	E/-W(ft)	DLS (deg/100ft)	Closure Distance (ft)	Closure Azimuth (deg)	Tool Type
0	0	0	0	0.00	0	0	0.00			TIP
155	0.09	62.82	155	0.03	0.06	0.11	0.06	0.12	62.82	MWD
247	0.09	148.08	247	-0.03	0.03	0.21	0.13	0.21	82.62	MWD
338	0.26	328.78	338	0.1	0.14	0.14	0.38	0.2	44.67	MWD
457	0.09	93.06	457	0.33	0.37	0.09	0.27	0.38	14.42	MWD
547	0.09	163.19	547	0.24	0.3	0.19	0.11	0.35	31.99	MWD
636	0.26	203.8	636	0.01	0.05	0.12	0.23	0.13	69.75	MWD
725	0.18	251.44	725	-0.15	-0.18	-0.09	0.22	0.2	205.99	MWD

814	0.09	235.97	814	-0.18	-0.27	-0.28	0.11	0.39	226.35	MWD
904	1.76	253.72	903.98	-0.23	-0.69	-1.67	1.86	1.8	247.38	MWD
992	3.43	272.71	991.89	0.56	-0.95	-5.59	2.11	5.67	260.38	MWD
1078	5.36	268.31	1077.63	2.3	-0.95	-12.18	2.28	12.21	265.56	MWD
1168	6.6	268.49	1167.14	4.53	-1.21	-21.55	1.38	21.58	266.8	MWD
1258	8.44	263.21	1256.37	6.74	-2.12	-33.28	2.18	33.35	266.35	MWD
1347	9.85	258.29	1344.23	8.19	-4.44	-47.22	1.81	47.43	264.63	MWD
1437	10.99	252.32	1432.75	8.31	-8.61	-62.93	1.74	63.52	262.21	MWD
1527	11.96	241.59	1520.96	5.85	-15.65	-79.31	2.6	80.84	258.84	MWD
1647	13.54	241.42	1638	-0.2	-28.29	-102.58	1.32	106.41	254.58	MWD
1796	12.65	238.97	1783.12	-8.62	-45.04	-131.88	0.7	139.36	251.14	Manual
1885	11.54	235.54	1870.15	-14.18	-55.1	-147.57	1.49	157.53	249.52	Manual
1975	14.45	242.24	1957.84	-19.56	-65.43	-164.94	3.64	177.44	248.36	Manual
2064	17.52	247.26	2043.39	-23.69	-75.78	-187.13	3.78	201.89	247.95	Manual
2154	18.62	243.22	2128.95	-28.29	-87.49	-212.45	1.85	229.76	247.62	Manual
2244	21.46	248.48	2213.5	-32.93	-100.01	-240.6	3.73	260.56	247.43	Manual
2333	21.58	246.79	2296.3	-36.94	-112.43	-270.79	0.71	293.2	247.45	Manual
2424	21.1	245.3	2381.06	-41.92	-125.87	-301.05	0.8	326.31	247.31	Manual
2513	22.06	240.91	2463.83	-48.51	-140.7	-330.21	2.11	358.94	246.92	Manual
2602	21.83	240.56	2546.38	-56.53	-156.95	-359.23	0.3	392.02	246.4	Manual
2692	21.5	240.06	2630.02	-64.78	-173.41	-388.09	0.42	425.07	245.92	Manual
2782	21.52	242.27	2713.75	-72.5	-189.32	-416.99	0.9	457.96	245.58	Manual
2871	22.09	240.66	2796.39	-80.07	-205.12	-446.03	0.93	490.94	245.3	Manual
2961	22.99	243.09	2879.51	-87.71	-221.37	-476.46	1.44	525.37	245.08	Manual
3052	23.32	241.62	2963.18	-95.35	-237.97	-508.15	0.73	561.11	244.91	Manual
3141	22.43	240.38	3045.18	-103.53	-254.74	-538.41	1.14	595.63	244.68	Manual
3231	21.67	243.31	3128.6	-111.06	-270.69	-568.19	1.49	629.37	244.53	Manual
3321	22.86	240.15	3211.89	-118.72	-286.85	-598.2	1.88	663.42	244.38	Manual
3411	22.26	239.74	3295.01	-127.51	-304.14	-628.08	0.69	697.85	244.16	Manual
3501	22.19	239.83	3378.32	-136.27	-321.28	-657.5	0.09	731.8	243.96	Manual
3590	21.7	240.15	3460.87	-144.71	-337.91	-686.3	0.57	764.98	243.79	Manual
3680	22.27	244.82	3544.33	-151.81	-353.45	-716.17	2.04	798.64	243.73	Manual
3770	21.77	239.53	3627.77	-159.1	-369.17	-745.99	2.27	832.34	243.67	Manual
3860	21.36	241.78	3711.48	-167.12	-385.38	-774.82	1.03	865.37	243.55	Manual
3950	22.76	241.33	3794.89	-174.81	-401.49	-804.54	1.57	899.15	243.48	Manual
4040	22.8	242.74	3877.87	-182.44	-417.83	-835.31	0.61	933.98	243.43	Manual
4130	22.42	243.23	3960.95	-189.46	-433.54	-866.14	0.47	968.58	243.41	Manual
4219	22.54	242.5	4043.19	-196.44	-449.07	-896.42	0.34	1002.61	243.39	Manual
4308	22.78	241.86	4125.32	-203.86	-465.07	-926.75	0.39	1036.89	243.35	Manual
4398	21.48	241.45	4208.68	-211.51	-481.16	-956.58	1.45	1070.78	243.3	Manual
4487	21.41	240.84	4291.52	-219.13	-496.86	-985.08	0.26	1103.3	243.23	Manual
4577	22.3	239.54	4375.05	-227.52	-513.53	-1014.15	1.13	1136.75	243.14	Manual
4666	22.58	240.08	4457.31	-236.25	-530.61	-1043.51	0.39	1170.67	243.05	Manual
4756	22.12	239.76	4540.55	-244.97	-547.76	-1073.13	0.53	1204.84	242.96	Manual
4845	22.51	240.09	4622.89	-253.58	-564.69	-1102.37	0.46	1238.59	242.88	Manual
4934	22.54	241.29	4705.1	-261.83	-581.38	-1132.1	0.52	1272.66	242.82	Manual
5023	22.24	244.77	4787.39	-268.69	-596.76	-1162.3	1.53	1306.54	242.82	Manual
5113	21.83	244.52	4870.82	-274.57	-611.22	-1192.81	0.47	1340.29	242.87	Manual
5203	22.53	243.56	4954.16	-280.86	-626.09	-1223.36	0.88	1374.26	242.9	Manual
5292	22.08	241.57	5036.5	-287.95	-641.65	-1253.34	0.99	1408.04	242.89	Manual

5381	23.21	244.18	5118.64	-294.94	-657.25	-1283.83	1.7	1442.29	242.89	Manual
5471	22.79	244.26	5201.49	-301.33	-672.55	-1315.5	0.47	1477.45	242.92	Manual
5561	22.26	244.49	5284.62	-307.51	-687.46	-1346.59	0.6	1511.92	242.95	Manual
5651	22.07	244.22	5367.97	-313.6	-702.15	-1377.2	0.24	1545.86	242.99	Manual
5740	22.13	243.48	5450.43	-319.9	-716.91	-1407.25	0.32	1579.34	243	Manual
5830	21.34	241.8	5534.03	-326.84	-732.22	-1436.85	1.12	1612.67	243	Manual
5920	22.85	242.19	5617.42	-334.28	-748.11	-1466.74	1.69	1646.51	242.98	Manual
6010	23.52	244.13	5700.15	-341.35	-764.1	-1498.36	1.13	1681.94	242.98	Manual
6099	23.85	243.27	5781.66	-348.17	-779.94	-1530.41	0.54	1717.69	243	Manual
6189	23.56	241.53	5864.06	-355.87	-796.7	-1562.47	0.84	1753.87	242.98	Manual
6278	23.74	242.48	5945.59	-363.71	-813.46	-1593.99	0.47	1789.56	242.96	Manual
6368	23.75	241.78	6027.97	-371.59	-830.4	-1626.03	0.31	1825.8	242.95	Manual
6457	24.04	243.11	6109.34	-379.23	-847.07	-1657.99	0.69	1861.84	242.94	Manual
6547	22.4	242.47	6192.05	-386.54	-863.29	-1689.55	1.84	1897.33	242.93	Manual
6637	24.01	240.72	6274.77	-394.59	-880.17	-1720.73	1.95	1932.77	242.91	Manual
6727	24.11	242.16	6356.95	-403	-897.71	-1752.96	0.66	1969.45	242.88	Manual
6816	23.89	242.27	6438.25	-410.82	-914.59	-1784.98	0.25	2005.65	242.87	Manual
6906	19.99	245.65	6521.72	-417.16	-929.42	-1815.14	4.55	2039.25	242.89	Manual
6996	14.48	272.66	6607.78	-416.1	-935.25	-1840.45	10.64	2064.45	243.06	Manual
7086	13.56	302.74	6695.22	-404.77	-929.01	-1860.6	8.07	2079.63	243.47	Manual
7176	18.55	298.39	6781.68	-387.02	-916.49	-1882.08	5.7	2093.36	244.04	Manual
7265	26.46	302.8	6863.84	-362.44	-898.99	-1911.25	9.08	2112.12	244.81	Manual
7355	33.38	314.92	6941.87	-325.94	-870.59	-1945.71	10.18	2131.59	245.89	Manual
7444	41.67	324.85	7012.46	-276.73	-829	-1980.17	11.51	2146.69	247.28	Manual
7534	47.04	338.1	7076.93	-215.7	-773.82	-2009.76	11.87	2153.59	248.94	Manual
7623	54.41	346.32	7133.29	-147.01	-708.28	-2030.52	10.93	2150.5	250.77	Manual
7712	62.72	350.17	7179.68	-71.31	-634	-2045.86	10.04	2141.84	252.78	Manual
7803	70.21	352.32	7215.99	11.5	-551.6	-2058.5	8.51	2131.13	255	Manual
7892	78.02	353.81	7240.33	96.12	-466.69	-2068.81	8.92	2120.8	257.29	Manual
7981	79.57	355.89	7257.63	182.05	-379.75	-2076.64	2.88	2111.08	259.64	Manual
8071	81.31	357.51	7272.58	268.85	-291.15	-2081.75	2.62	2102.01	262.04	Manual
8160	88.86	0.55	7280.2	354.68	-202.57	-2083.23	9.14	2093.06	264.45	Manual
8250	90.66	1.2	7280.58	441.11	-112.58	-2081.86	2.13	2084.9	266.9	Manual
8340	89.95	0.27	7280.1	527.6	-22.59	-2080.7	1.3	2080.83	269.38	Manual
8430	90.68	359.35	7279.6	614.48	67.4	-2081	1.3	2082.09	271.86	Manual
8519	89.92	0.7	7279.14	700.31	156.4	-2080.96	1.74	2086.83	274.3	Manual
8609	89.71	0.61	7279.43	786.84	246.39	-2079.93	0.25	2094.48	276.76	Manual
8698	90.38	359.27	7279.36	872.7	335.39	-2080.03	1.68	2106.89	279.16	Manual
8786	90.63	359.43	7278.58	957.83	423.38	-2081.03	0.34	2123.66	281.5	Manual
8878	92.6	357.19	7275.99	1047.2	515.29	-2083.74	3.24	2146.51	283.89	Manual
8968	91.9	0.12	7272.45	1134.46	605.19	-2085.85	3.34	2171.87	286.18	Manual
9057	90.07	359.55	7270.92	1220.35	694.17	-2086.1	2.15	2198.57	288.41	Manual
9147	89.77	358.2	7271.05	1307.61	784.15	-2087.87	1.54	2230.27	290.58	Manual
9237	90.52	359.36	7270.82	1394.9	874.13	-2089.79	1.53	2265.24	292.7	Manual
9326	90.05	359.06	7270.38	1481.05	963.12	-2091.01	0.63	2302.16	294.73	Manual
9416	90.19	0.17	7270.19	1568.02	1053.12	-2091.62	1.24	2341.78	296.72	Manual
9506	89.39	359.26	7270.52	1654.94	1143.11	-2092.07	1.35	2384	298.65	Manual
9596	89.37	0.34	7271.49	1741.82	1233.11	-2092.38	1.2	2428.7	300.51	Manual
9686	89.58	0.33	7272.32	1828.48	1323.1	-2091.85	0.23	2475.17	302.31	Manual
9775	89.54	0.88	7272	1914.07	1412.09	-2092.01	0.69	2522.08	304.03	Manual

9775	89.54	0.88	7273	1914.07	1412.09	-2090.91	0.82	2523.08	304.03	Manual
9865	89.5	1.95	7273.76	2000.26	1502.06	-2088.69	1.19	2572.71	305.72	Manual
9955	89.55	2.06	7274.5	2086.17	1592	-2085.54	0.13	2623.73	307.36	Manual
10045	90.33	2.7	7274.6	2171.92	1681.92	-2081.81	1.12	2676.34	308.94	Manual
10134	89.8	2.12	7274.5	2256.69	1770.84	-2078.06	0.88	2730.24	310.44	Manual
10223	89.6	1.96	7274.96	2341.64	1859.79	-2074.9	0.29	2786.39	311.87	Manual
10313	89.44	0.62	7275.72	2427.89	1949.76	-2072.87	1.5	2845.76	313.25	Manual
10403	89.41	0.31	7276.62	2514.49	2039.75	-2072.14	0.35	2907.64	314.55	Manual
10492	89.58	359.82	7277.4	2600.3	2128.75	-2072.04	0.58	2970.67	315.77	Manual
10582	90.43	1.72	7277.4	2686.78	2218.73	-2070.83	2.31	3034.98	316.97	Manual
10672	89.92	2.07	7277.12	2772.75	2308.68	-2067.85	0.69	3099.36	318.15	Manual
10762	89.51	1.15	7277.57	2858.85	2398.65	-2065.32	1.12	3165.29	319.27	Manual
10852	89.88	0.49	7278.05	2945.31	2488.63	-2064.04	0.84	3233.19	320.33	Manual
10941	89.22	2.33	7278.75	3030.54	2577.6	-2061.85	2.2	3300.79	321.34	Manual
11031	89.17	1.42	7280.01	3116.51	2667.54	-2058.9	1.01	3369.7	322.34	Manual
11120	89.88	0.61	7280.75	3201.92	2756.52	-2057.33	1.21	3439.62	323.26	Manual
11210	89.82	0.64	7280.98	3288.46	2846.52	-2056.34	0.07	3511.58	324.16	Manual
11299	89.92	0.05	7281.19	3374.16	2935.52	-2055.81	0.67	3583.8	325	Manual
11389	89.24	359.57	7281.85	3461.04	3025.51	-2056.11	0.92	3658.05	325.8	Manual
11479	89.46	0.42	7282.87	3547.84	3115.51	-2056.11	0.98	3732.83	326.58	Manual
11568	89.77	1.5	7283.47	3633.27	3204.49	-2054.62	1.26	3806.6	327.33	Manual
11658	89.16	1.34	7284.31	3719.46	3294.46	-2052.39	0.7	3881.46	328.08	Manual
11748	89.26	359.66	7285.55	3806.04	3384.44	-2051.61	1.87	3957.72	328.78	Manual
11837	88.86	0.88	7287.01	3891.76	3473.43	-2051.19	1.44	4033.87	329.44	Manual
11926	88.9	358.86	7288.75	3977.63	3562.41	-2051.39	2.27	4110.83	330.06	Manual
12016	89.75	0.71	7289.81	4064.52	3652.39	-2051.73	2.26	4189.22	330.67	Manual
12106	90.56	1.82	7289.56	4150.78	3742.37	-2049.74	1.53	4266.94	331.29	Manual
12195	90.13	0.57	7289.03	4236.1	3831.35	-2047.88	1.49	4344.31	331.88	Manual
12284	89.48	359.64	7289.33	4321.9	3920.35	-2047.72	1.27	4422.93	332.42	Manual
12374	89.15	1	7290.41	4408.56	4010.34	-2047.22	1.55	4502.65	332.96	Manual
12463	89.59	0.45	7291.39	4494.1	4099.32	-2046.09	0.79	4581.59	333.47	Manual
12554	89.06	1.52	7292.46	4581.43	4190.3	-2044.53	1.31	4662.48	333.99	Manual
12643	89.1	359.72	7293.89	4667	4279.28	-2043.57	2.02	4742.19	334.47	Manual
12732	89.13	358.89	7295.26	4753.11	4368.26	-2044.65	0.93	4823.1	334.92	Manual
12822	89.46	356.55	7296.37	4840.78	4458.18	-2048.23	2.63	4906.18	335.32	Manual
12912	89.59	356.25	7297.11	4928.9	4548	-2053.88	0.36	4990.26	335.7	Manual
13002	90.78	1.62	7296.82	5016.1	4637.95	-2055.55	6.11	5073.05	336.1	Manual
13091	90.14	0.6	7296.11	5101.47	4726.93	-2053.82	1.35	5153.84	336.52	Manual
13180	90.46	1.57	7295.64	5186.85	4815.91	-2052.14	1.15	5234.91	336.92	Manual
13270	90.02	1.19	7295.27	5273.05	4905.88	-2049.97	0.65	5316.96	337.32	Manual
13359	89.6	358.69	7295.56	5358.91	4994.87	-2050.06	2.85	5399.21	337.69	Manual
13449	90.52	0.63	7295.47	5445.85	5084.87	-2050.6	2.39	5482.77	338.04	Manual
13538	89.61	2.11	7295.37	5531.1	5173.84	-2048.47	1.95	5564.6	338.4	Manual
13628	90.03	2.48	7295.65	5616.89	5263.76	-2044.87	0.62	5647.01	338.77	Manual
13718	89.69	0.99	7295.87	5702.93	5353.72	-2042.14	1.7	5729.98	339.12	Manual
13807	90.61	3.49	7295.64	5787.78	5442.64	-2038.66	2.99	5811.93	339.47	Manual
13896	90.21	0.88	7295	5872.66	5531.57	-2035.27	2.97	5894.11	339.8	Manual
13986	90.01	2.16	7294.83	5958.8	5621.53	-2032.88	1.44	5977.81	340.12	Manual
14076	90.1	359.79	7294.74	6045.18	5711.51	-2031.35	2.64	6062	340.42	Manual
14166	89.68	0.46	7294.91	6131.94	5801.51	-2031.16	0.88	6146.8	340.7	Manual

14256	89.38	0.62	7295.65	6218.51	5891.51	-2030.31	0.38	6231.53	340.99	Manual
14345	89.4	358.94	7296.6	6304.43	5980.5	-2030.65	1.89	6315.84	341.25	Manual
14435	89.48	359.86	7297.48	6391.48	6070.49	-2031.59	1.03	6401.42	341.5	Manual
14525	89.4	0.76	7298.36	6478.15	6160.48	-2031.11	1	6486.67	341.75	Manual
14615	89.53	1.05	7299.2	6564.57	6250.47	-2029.68	0.35	6571.75	342.01	Manual
14704	89.45	0.51	7299.99	6650.08	6339.45	-2028.47	0.61	6656.08	342.26	Manual
14793	89.07	0.05	7301.14	6735.79	6428.44	-2028.04	0.67	6740.76	342.49	Manual
14883	89.42	359.54	7302.33	6822.68	6518.44	-2028.36	0.69	6826.73	342.72	Manual
14973	89.43	359.68	7303.23	6909.64	6608.43	-2028.97	0.16	6912.89	342.93	Manual
15063	89.19	359.83	7304.31	6996.54	6698.42	-2029.36	0.31	6999.08	343.15	Manual
15152	89.91	357.81	7305.01	7082.84	6787.39	-2031.19	2.41	7084.8	343.34	Manual
15241	90.73	359.52	7304.51	7169.2	6876.37	-2033.26	2.13	7170.67	343.53	Manual
15331	88.83	359.22	7304.86	7256.26	6966.35	-2034.25	2.14	7257.29	343.72	Manual
15421	90.39	359.17	7305.47	7343.38	7056.34	-2035.52	1.73	7344.06	343.91	Manual
15510	89.15	358.55	7305.83	7429.67	7145.32	-2037.29	1.56	7430.08	344.09	Manual
15600	89.63	359.08	7306.79	7516.94	7235.3	-2039.15	0.79	7517.16	344.26	Manual
15690	90.01	359.79	7307.07	7603.98	7325.29	-2040.04	0.89	7604.05	344.44	Manual
15779	89.89	359.42	7307.15	7689.98	7414.29	-2040.65	0.44	7689.99	344.61	Manual
15839	89.89	359.42	7307.26	7748.01	7474.28	-2041.26	0	7748.01	344.72	Manual

Company: PDC Energy Inc
Well: Vega 2N
Field Name: Wattenberg
Country Name: United States
State Name: Colorado
County Name: Weld

Schlumberger

**XEM GAMMA RAY
1in/100ft Measured Depth
Final Print
Recorded Mode**