



Crestone Peak Resources

Schlumberger

Plan 0

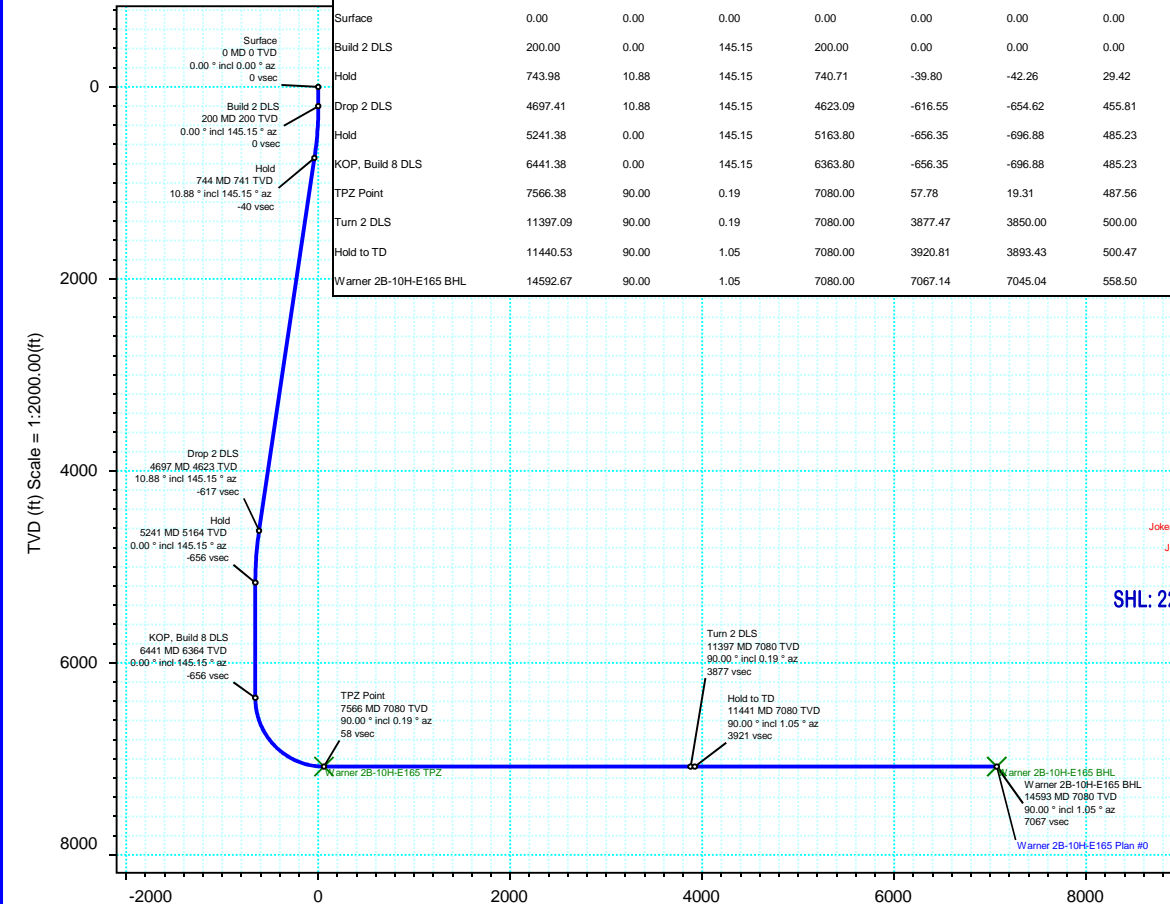
Borehole:	Well:	Field:	Structure:
Original Hole	Warner 2B-10H-E165	CO, Weld County (NAD 83 NZ) - 2019	Crestone Peak 10-1N-65W (Warner Pad)

Gravity & Magnetic Parameters				Surface Location				Miscellaneous			
Model:	HDGM 2021	Dip:	66.328°	Date:	29-Jul-2021	Lat:	N 40 4 2.11	Northing:	1268462.84ftUS	Grid Conv:	0.5438°
MagDec:	7.93°	FS:	51748.542nT	Gravity FS:	998.998mgn (9.80665 Based)	Lon:	W 104 39 30.21	Easting:	3235543.46ftUS	Scale Fact:	0.99996195
								Plan: Warner 2B-10H-E165 Plan #0			

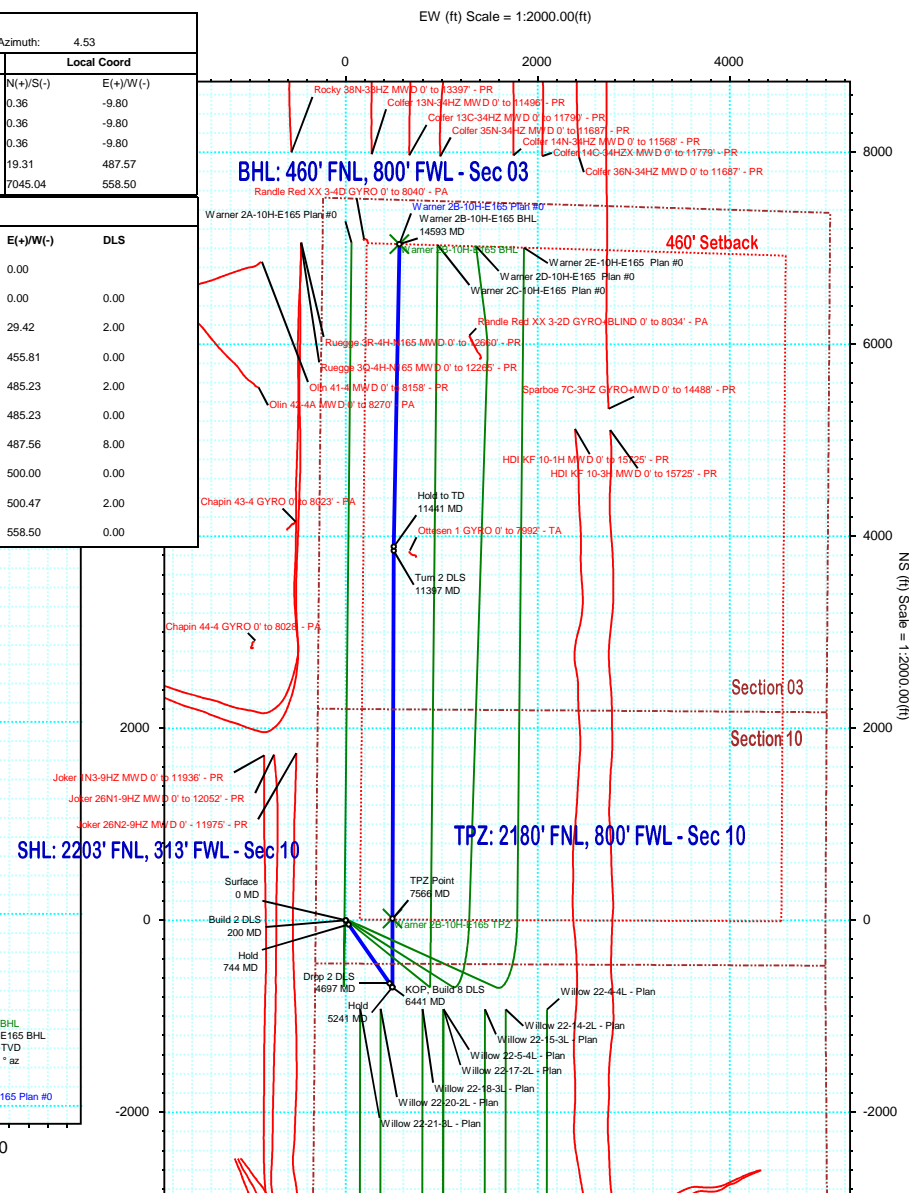
Proposal



True North
Tot Corr (M->T 7.930°)
Mag Dec (7.930°)
Grid Conv (0.544°)



Vertical Section (ft) Azim = 4.53° Scale = 1:2000.00(ft) Origin = 0N/-S, 0E/-W



Warner 2B-10H-E165 Plan #0 Proposal Geodetic Report



(Def Plan)

Report Date: August 02, 2021 - 03:55 PM
Client: Crestone Peak Resources
Field: CO, Weld County (NAD 83 NZ) - 2019
Structure / Slot: Crestone Peak 10-1N-65W (Warner Pad) / Warner 2B-10H-E165
Well: Warner 2B-10H-E165
Borehole: Original Hole
UWI / API#: Unknown / Unknown
Survey Name: Warner 2B-10H-E165 Plan #0
Survey Date: July 29, 2021
Tort / AHD / DDI / ERD Ratio: 112.628 ° / 8591.651 ft / 6.300 / 1.214
Coordinate Reference System: NAD83 Colorado State Plane, Northern Zone, US Feet
Location Lat / Long: N 40° 4' 2.10720", W 104° 39' 30.21120"
Location Grid N/E Y/X: N 1268462.835 ftUS, E 3235543.455 ftUS
CRS Grid Convergence Angle: 0.5438 °
Grid Scale Factor: 0.99996195
Version / Patch: 2.10.826.8

Survey / DLS Computation: Minimum Curvature / Lubinski
Vertical Section Azimuth: 4.533 ° (True North)
Vertical Section Origin: 0.000 ft, 0.000 ft
TVD Reference Datum: KB 13ft
TVD Reference Elevation: 4984.000 ft above MSL
Seabed / Ground Elevation: 4971.000 ft above MSL
Magnetic Declination: 7.930 °
Total Gravity Field Strength: 998.9975mgn (9.80665 Based)
Gravity Model: GARM
Total Magnetic Field Strength: 51748.542 nT
Magnetic Dip Angle: 66.328 °
Declination Date: July 29, 2021
Magnetic Declination Model: HDGM 2021
North Reference: True North
Grid Convergence Used: 0.0000 °
Total Corr Mag North->True North: 7.9304 °
Local Coord Referenced To: Well Head

Comments	MD (ft)	Incl (°)	Azim True (°)	TVD (ft)	TVDSS (ft)	VSEC (ft)	NS (ft)	EW (ft)	DLS (°/100ft)	Northing (ftUS)	Easting (ftUS)	Latitude (°)	Longitude (°)
Build 2 DLS	Surface	0.00	0.00	0.00	-4984.00	0.00	0.00	0.00	N/A	1268462.84	3235543.46	40.067252	-104.658392
	100.00	0.00	145.15	100.00	-4884.00	0.00	0.00	0.00	0.00	1268462.84	3235543.46	40.067252	-104.658392
	200.00	0.00	145.15	200.00	-4784.00	0.00	0.00	0.00	0.00	1268462.84	3235543.46	40.067252	-104.658392
	300.00	2.00	145.15	299.98	-4684.02	-1.35	-1.43	1.00	2.00	1268461.41	3235544.47	40.067248	-104.658388
	400.00	4.00	145.15	399.84	-4584.16	-5.39	-5.73	3.99	2.00	1268457.15	3235547.50	40.067236	-104.658378
	500.00	6.00	145.15	499.45	-4484.55	-12.13	-12.88	8.97	2.00	1268450.04	3235552.54	40.067217	-104.658360
	600.00	8.00	145.15	598.70	-4385.30	-21.55	-22.88	15.93	2.00	1268440.11	3235559.60	40.067189	-104.658335
	700.00	10.00	145.15	697.47	-4286.53	-33.64	-35.72	24.87	2.00	1268427.36	3235568.66	40.067154	-104.658303
	743.98	10.88	145.15	740.71	-4243.29	-39.80	-42.26	29.42	2.00	1268420.86	3235573.28	40.067136	-104.658287
	800.00	10.88	145.15	795.73	-4188.27	-47.97	-50.93	35.47	0.00	1268412.24	3235579.40	40.067112	-104.658265
Drop 2 DLS	900.00	10.88	145.15	893.93	-4090.07	-62.56	-66.42	46.25	0.00	1268396.86	3235590.33	40.067070	-104.658227
	1000.00	10.88	145.15	992.14	-3991.86	-77.15	-81.91	57.04	0.00	1268381.47	3235601.26	40.067027	-104.658188
	1100.00	10.88	145.15	1090.34	-3893.66	-91.74	-97.40	67.82	0.00	1268366.08	3235612.19	40.066985	-104.658150
	1200.00	10.88	145.15	1188.54	-3795.46	-106.33	-112.89	78.61	0.00	1268350.70	3235623.13	40.066942	-104.658111
	1300.00	10.88	145.15	1286.74	-3697.26	-120.92	-128.38	89.39	0.00	1268335.31	3235634.06	40.066900	-104.658073
	1400.00	10.88	145.15	1384.95	-3599.05	-135.50	-143.87	100.18	0.00	1268319.93	3235644.99	40.066857	-104.658034
	1500.00	10.88	145.15	1483.15	-3500.85	-150.09	-159.36	110.96	0.00	1268304.54	3235655.92	40.066815	-104.657996
	1600.00	10.88	145.15	1581.35	-3402.65	-164.68	-174.85	121.75	0.00	1268289.15	3235666.85	40.066772	-104.657957
	1700.00	10.88	145.15	1679.55	-3304.45	-179.27	-190.34	132.53	0.00	1268273.77	3235677.78	40.066730	-104.657918
	1800.00	10.88	145.15	1777.76	-3206.24	-193.86	-205.83	143.32	0.00	1268258.38	3235688.71	40.066687	-104.657880
	1900.00	10.88	145.15	1875.96	-3108.04	-208.45	-221.32	154.10	0.00	1268243.00	3235699.64	40.066644	-104.657841
	2000.00	10.88	145.15	1974.16	-3009.84	-223.04	-236.81	164.89	0.00	1268227.61	3235710.58	40.066602	-104.657803
	2100.00	10.88	145.15	2072.36	-2911.64	-237.63	-252.30	175.67	0.00	1268212.23	3235721.51	40.066559	-104.657764
	2200.00	10.88	145.15	2170.57	-2813.43	-252.21	-267.79	186.46	0.00	1268196.84	3235732.44	40.066517	-104.657726
	2300.00	10.88	145.15	2268.77	-2715.23	-266.80	-283.28	197.24	0.00	1268181.45	3235743.37	40.066474	-104.657687
	2400.00	10.88	145.15	2366.97	-2617.03	-281.39	-298.77	208.03	0.00	1268166.07	3235754.30	40.066432	-104.657649
	2500.00	10.88	145.15	2465.17	-2518.83	-295.98	-314.26	218.81	0.00	1268150.68	3235765.23	40.066389	-104.657610
	2600.00	10.88	145.15	2563.38	-2420.62	-310.57	-329.75	229.60	0.00	1268135.30	3235776.16	40.066347	-104.657572
	2700.00	10.88	145.15	2661.58	-2322.42	-325.16	-345.23	240.38	0.00	1268119.91	3235787.09	40.066304	-104.657533
	2800.00	10.88	145.15	2759.78	-2224.22	-339.75	-360.72	251.17	0.00	1268104.53	3235798.03	40.066262	-104.657495
	2900.00	10.88	145.15	2857.99	-2126.01	-354.34	-376.21	261.95	0.00	1268089.14	3235808.96	40.066219	-104.657456
	3000.00	10.88	145.15	2956.19	-2027.81	-368.92	-391.70	272.74	0.00	1268073.75	3235819.89	40.066177	-104.657418
	3100.00	10.88	145.15	3054.39	-1929.61	-383.51	-407.19	283.52	0.00	1268058.37	3235830.82	40.066134	-104.657379
	3200.00	10.88	145.15	3152.59	-1831.41	-398.10	-422.68	294.31	0.00	1268042.98	3235841.75	40.066092	-104.657340
	3300.00	10.88	145.15	3250.80	-1733.20	-412.69	-438.17	305.09	0.00	1268027.60	3235852.68	40.066049	-104.657302
	3400.00	10.88	145.15	3349.00	-1635.00	-427.28	-453.66	315.88	0.00	1268012.21	3235863.61	40.066007	-104.657263
3500.00	10.88	145.15	3447.20	-1536.80	-441.87	-469.15	326.66	0.00	1267996.82	3235874.54	40.065964	-104.657225	
3600.00	10.88	145.15	3545.40	-1438.60	-456.46	-484.64	337.45	0.00	1267981.44	3235885.48	40.065922	-104.657186	
3700.00	10.88	145.15	3643.61	-1340.39	-471.05	-500.13	348.24	0.00	1267966.05	3235896.41	40.065879	-104.657148	
3800.00	10.88	145.15	3741.81	-1242.19	-485.63	-515.62	359.02	0.00	1267950.67	3235907.34	40.065837	-104.657109	
3900.00	10.88	145.15	3840.01	-1143.99	-500.22	-531.11	369.81	0.00	1267935.28	3235918.27	40.065794	-104.657071	
4000.00	10.88	145.15	3938.21	-1045.79	-514.81	-546.60	380.59	0.00	1267919.90	3235929.20	40.065752	-104.657032	
4100.00	10.88	145.15	4036.42	-947.58	-529.40	-562.09	391.38	0.00	1267904.51	3235940.13	40.065709	-104.656994	
4200.00	10.88	145.15	4134.62	-849.38	-543.99	-577.58	402.16	0.00	1267889.12	3235951.06	40.065667	-104.656955	
4300.00	10.88	145.15	4232.82	-751.18	-558.58	-593.07	412.95	0.00	1267873.74	3235961.99	40.065624	-104.656917	
4400.00	10.88	145.15	4331.02	-652.98	-573.17	-608.56	423.73	0.00	1267858.35	3235972.93	40.065581	-104.656878	
4500.00	10.88	145.15	4429.23	-554.77	-587.76	-624.05	434.52	0.00	1267842.97	3235983.86	40.065539	-104.656840	
4600.00	10.88	145.15	4527.43	-456.57	-602.34	-639.54	445.30	0.00	1267827.58	3235994.79	40.065496	-104.656801	
4697.41	10.88	145.15	4623.09	-360.91	-616.55	-654.62	455.81	0.00	1267812.19	3236005.44	40.065455	-104.656764	
4700.00	10.83	145.15	4625.63	-358.37	-616.93	-655.02	456.09	0.00	1267812.20	3236005.72	40.065454	-104.656763	
4800.00	8.83	145.15	4724.16	-259.84	-630.12	-669.03	465.84	2.00	1267798.28	3236015.60	40.065415	-104.656728	
4900.00	6.83	145.15	4823.22	-160.78	-640.65	-680.21	473.62	2.00	1267787.18	3236023.49	40.065385	-104.656700	
5000.00	4.83	145.15	4922.70	-61.30	-648.50	-688.54	479.42	2.00	1267778.90	3236029.37	40.065362	-104.656679	
Hold	5100.00	2.83	145.15	5022.47	38.47	-653.66	-694.02	483.24	2.00	1267773.46	3236033.24	40.065347	-104.656666
	5200.00	0.83	145.15	5122.42	138.42	-656.12	-696.63	485.06	2.00	1267770.86	3236035.08	40.065340	-104.656659
	5241.38	0.00	145.15	5163.80	179.80	-656.35	-696.88	485.23	2.00	1267770.62	3236035.26	40.065339	-104.656658
	5300.00	0.00	145.15	5222.42	238.42	-656.35	-696.88	485.23	0.00	1267770.62	3236035.26	40.065339	-104.656658
	5400.00	0.00	145.15	5322.42	338.42	-656.35	-696.88	485.23	0.00	1267770.62	3236035.26	40.065339	-104.656658
	5500.00	0.00	145.15	5422.42	438.42	-656.35	-696.88	485.23	0.00	1267770.62	3236035.26	40.065339	-104.656658
	5600.00	0.00	145.15	5522.42	538.42	-656.35	-696.88	485.23	0.00	1267770.62	3236035.26	40.065339	-104.656658
	5700.00	0.00	145.15	5622.42	638.42	-656.35	-696.88	485.23	0.00	1267770.62	3236035.26	40.065339	-104.656658
	5800.00	0.00	145.15	5722.42	738.42	-656.35	-696.88	485.23	0.00	1267770.62	3236035.26	40.065339	-104.656658
	5900.00	0.00	145.15	5822.42	838.42	-656.35	-696.88	485.23	0.00	1267770.62	3236035.26	40.065339	-104.656658
	6000.00	0.00	145.15	5922.42	938.42	-656.35	-696.88	485.23	0.00	1267770.62	3236035.26	40.065339	-104.656658
	6100.00	0.00	145.15	6022.42	1038.42	-656.35	-696.88	485.23	0.00	1267770.62	3236035.26	40.065339	-104.656658
	6200.00	0.00	145.15	6122.42	1138.42	-656.35	-696.88	485.23	0.00	1267770.62	3236035.26	40.065339	-104.656658
6300.00	0.00	145.15	6222.42	1238.42	-656.35	-696.88	485.23	0.00	1267770.62	3236035.26	40.065339	-104.656658	
6400.00	0.00	145.15	6322.42	1338.42	-656.35	-696.88	485.23	0.00	1267770.62	3236035.26	40.065339	-104.656658	
KOP, Build 8 DLS	6441.38	0.00	145.15	6363.80	1379.80	-656.35	-696.88	485.23	0.00	1267770.62	3236035.26	40.065339	-104.656658
	6500.00	4.69	0.19	6422.35	1438.35	-653.96	-694.48	485.24	8.00	1267773.02	3236035.24	40.065346	-104.656658
	6600.00	12.69	0.19	6521.12	1537.12	-638.91	-679.39	485.29	8.00	1267788.11	3236035.15	40.065387	-104.656658
	6700.00	20.69	0.19	6616.83	1632.83	-610.30	-650.69	485.38	8.00	1267816.80	3236034.97	40.065466	-104.656658
	6800.00												

Comments	MD (ft)	Incl (°)	Azim True (°)	TVD (ft)	TVDSS (ft)	VSEC (ft)	NS (ft)	EW (ft)	DLS (°/100ft)	Northing (ftUS)	Easting (ftUS)	Latitude (°)	Longitude (°)
	8200.00	90.00	0.19	7080.00	2096.00	689.58	652.93	489.61	0.00	1269120.35	3236028.83	40.069044	-104.656643
	8300.00	90.00	0.19	7080.00	2096.00	789.29	752.93	489.94	0.00	1269220.35	3236026.21	40.069319	-104.656641
	8400.00	90.00	0.19	7080.00	2096.00	889.00	852.93	490.26	0.00	1269320.34	3236025.58	40.069593	-104.656640
	8500.00	90.00	0.19	7080.00	2096.00	988.71	952.92	490.59	0.00	1269420.33	3236024.96	40.069868	-104.656639
	8600.00	90.00	0.19	7080.00	2096.00	1088.43	1052.92	490.91	0.00	1269520.33	3236024.33	40.070142	-104.656638
	8700.00	90.00	0.19	7080.00	2096.00	1188.14	1152.92	491.24	0.00	1269620.32	3236023.71	40.070417	-104.656637
	8800.00	90.00	0.19	7080.00	2096.00	1287.85	1252.92	491.56	0.00	1269720.32	3236023.09	40.070691	-104.656636
	8900.00	90.00	0.19	7080.00	2096.00	1387.56	1352.92	491.89	0.00	1269820.31	3236022.46	40.070966	-104.656634
	9000.00	90.00	0.19	7080.00	2096.00	1487.28	1452.92	492.21	0.00	1269920.30	3236021.84	40.071240	-104.656633
	9100.00	90.00	0.19	7080.00	2096.00	1586.99	1552.92	492.54	0.00	1270020.30	3236021.21	40.071515	-104.656632
	9200.00	90.00	0.19	7080.00	2096.00	1686.70	1652.92	492.86	0.00	1270120.29	3236020.59	40.071789	-104.656631
	9300.00	90.00	0.19	7080.00	2096.00	1786.41	1752.92	493.19	0.00	1270220.29	3236019.97	40.072064	-104.656630
	9400.00	90.00	0.19	7080.00	2096.00	1886.13	1852.92	493.51	0.00	1270320.28	3236019.34	40.072338	-104.656629
	9500.00	90.00	0.19	7080.00	2096.00	1985.84	1952.92	493.84	0.00	1270420.27	3236018.72	40.072613	-104.656627
	9600.00	90.00	0.19	7080.00	2096.00	2085.55	2052.92	494.16	0.00	1270520.27	3236018.09	40.072887	-104.656626
	9700.00	90.00	0.19	7080.00	2096.00	2185.26	2152.92	494.49	0.00	1270620.26	3236017.47	40.073162	-104.656625
	9800.00	90.00	0.19	7080.00	2096.00	2284.98	2252.92	494.81	0.00	1270720.26	3236016.84	40.073436	-104.656624
	9900.00	90.00	0.19	7080.00	2096.00	2384.69	2352.92	495.14	0.00	1270820.25	3236016.22	40.073711	-104.656623
	10000.00	90.00	0.19	7080.00	2096.00	2484.40	2452.92	495.46	0.00	1270920.25	3236015.60	40.073985	-104.656622
	10100.00	90.00	0.19	7080.00	2096.00	2584.11	2552.92	495.79	0.00	1271020.24	3236014.97	40.074260	-104.656620
	10200.00	90.00	0.19	7080.00	2096.00	2683.82	2652.92	496.11	0.00	1271120.23	3236014.35	40.074534	-104.656619
	10300.00	90.00	0.19	7080.00	2096.00	2783.54	2752.92	496.44	0.00	1271220.23	3236013.72	40.074809	-104.656618
	10400.00	90.00	0.19	7080.00	2096.00	2883.25	2852.91	496.76	0.00	1271320.22	3236013.10	40.075083	-104.656617
	10500.00	90.00	0.19	7080.00	2096.00	2982.96	2952.91	497.09	0.00	1271420.22	3236012.47	40.075358	-104.656616
	10600.00	90.00	0.19	7080.00	2096.00	3082.67	3052.91	497.41	0.00	1271520.21	3236011.85	40.075632	-104.656615
	10700.00	90.00	0.19	7080.00	2096.00	3182.39	3152.91	497.74	0.00	1271620.20	3236011.23	40.075907	-104.656613
	10800.00	90.00	0.19	7080.00	2096.00	3282.10	3252.91	498.06	0.00	1271720.20	3236010.60	40.076181	-104.656612
	10900.00	90.00	0.19	7080.00	2096.00	3381.81	3352.91	498.39	0.00	1271820.19	3236009.98	40.076456	-104.656611
	11000.00	90.00	0.19	7080.00	2096.00	3481.52	3452.91	498.71	0.00	1271920.19	3236009.35	40.076730	-104.656610
	11100.00	90.00	0.19	7080.00	2096.00	3581.24	3552.91	499.03	0.00	1272020.18	3236008.73	40.077005	-104.656609
	11200.00	90.00	0.19	7080.00	2096.00	3680.95	3652.91	499.36	0.00	1272120.17	3236008.10	40.077279	-104.656608
	11300.00	90.00	0.19	7080.00	2096.00	3780.66	3752.91	499.68	0.00	1272220.17	3236007.48	40.077554	-104.656606
Turn 2 DLS	11397.09	90.00	0.19	7080.00	2096.00	3877.47	3850.00	500.00	0.00	1272317.25	3236006.87	40.077820	-104.656605
	11400.00	90.00	0.24	7080.00	2096.00	3880.37	3852.91	500.01	2.00	1272320.16	3236006.86	40.077828	-104.656605
Hold to TD	11440.53	90.00	1.05	7080.00	2096.00	3920.81	3893.43	500.47	2.00	1272360.69	3236006.93	40.077940	-104.656604
	11500.00	90.00	1.05	7080.00	2096.00	3980.17	3952.90	501.57	0.00	1272420.15	3236007.46	40.078103	-104.656600
	11600.00	90.00	1.05	7080.00	2096.00	4079.99	4052.88	503.41	0.00	1272520.15	3236008.36	40.078377	-104.656593
	11700.00	90.00	1.05	7080.00	2096.00	4179.80	4152.86	505.25	0.00	1272620.14	3236009.25	40.078652	-104.656587
	11800.00	90.00	1.05	7080.00	2096.00	4279.62	4252.85	507.09	0.00	1272720.13	3236010.14	40.078926	-104.656580
	11900.00	90.00	1.05	7080.00	2096.00	4379.43	4352.83	508.93	0.00	1272820.12	3236011.03	40.079201	-104.656573
	12000.00	90.00	1.05	7080.00	2096.00	4479.25	4452.81	510.77	0.00	1272920.12	3236011.92	40.079475	-104.656567
	12100.00	90.00	1.05	7080.00	2096.00	4579.07	4552.79	512.61	0.00	1273020.11	3236012.81	40.079750	-104.656560
	12200.00	90.00	1.05	7080.00	2096.00	4678.88	4652.78	514.45	0.00	1273120.10	3236013.71	40.080024	-104.656554
	12300.00	90.00	1.05	7080.00	2096.00	4778.70	4752.76	516.29	0.00	1273220.09	3236014.60	40.080299	-104.656547
	12400.00	90.00	1.05	7080.00	2096.00	4878.51	4852.74	518.13	0.00	1273320.08	3236015.49	40.080573	-104.656540
	12500.00	90.00	1.05	7080.00	2096.00	4978.33	4952.73	519.97	0.00	1273420.08	3236016.38	40.080847	-104.656534
	12600.00	90.00	1.05	7080.00	2096.00	5078.14	5052.71	521.82	0.00	1273520.07	3236017.27	40.081122	-104.656527
	12700.00	90.00	1.05	7080.00	2096.00	5177.96	5152.69	523.66	0.00	1273620.06	3236018.17	40.081396	-104.656521
	12800.00	90.00	1.05	7080.00	2096.00	5277.78	5252.68	525.50	0.00	1273720.05	3236019.06	40.081671	-104.656514
	12900.00	90.00	1.05	7080.00	2096.00	5377.59	5352.66	527.34	0.00	1273820.04	3236019.95	40.081945	-104.656507
	13000.00	90.00	1.05	7080.00	2096.00	5477.41	5452.64	529.18	0.00	1273920.04	3236020.84	40.082220	-104.656501
	13100.00	90.00	1.05	7080.00	2096.00	5577.22	5552.63	531.02	0.00	1274020.03	3236021.73	40.082494	-104.656494
	13200.00	90.00	1.05	7080.00	2096.00	5677.04	5652.61	532.86	0.00	1274120.02	3236022.63	40.082769	-104.656488
	13300.00	90.00	1.05	7080.00	2096.00	5776.86	5752.59	534.70	0.00	1274220.01	3236023.52	40.083043	-104.656481
	13400.00	90.00	1.05	7080.00	2096.00	5876.67	5852.57	536.54	0.00	1274320.00	3236024.41	40.083318	-104.656475
	13500.00	90.00	1.05	7080.00	2096.00	5976.49	5952.56	538.38	0.00	1274420.00	3236025.30	40.083592	-104.656468
	13600.00	90.00	1.05	7080.00	2096.00	6076.30	6052.54	540.22	0.00	1274519.99	3236026.19	40.083867	-104.656461
	13700.00	90.00	1.05	7080.00	2096.00	6176.12	6152.52	542.07	0.00	1274619.98	3236027.08	40.084141	-104.656455
	13800.00	90.00	1.05	7080.00	2096.00	6275.93	6252.51	543.91	0.00	1274719.97	3236027.98	40.084415	-104.656448
	13900.00	90.00	1.05	7080.00	2096.00	6375.75	6352.49	545.75	0.00	1274819.96	3236028.87	40.084690	-104.656442
	14000.00	90.00	1.05	7080.00	2096.00	6475.57	6452.47	547.59	0.00	1274919.96	3236029.76	40.084964	-104.656435
	14100.00	90.00	1.05	7080.00	2096.00	6575.38	6552.46	549.43	0.00	1275019.95	3236030.65	40.085239	-104.656428
	14200.00	90.00	1.05	7080.00	2096.00	6675.20	6652.44	551.27	0.00	1275119.94	3236031.54	40.085513	-104.656422
	14300.00	90.00	1.05	7080.00	2096.00	6775.01	6752.42	553.11	0.00	1275219.93	3236032.44	40.085788	-104.656415
	14400.00	90.00	1.05	7080.00	2096.00	6874.83	6852.40	554.95	0.00	1275319.92	3236033.33	40.086062	-104.656409
	14500.00	90.00	1.05	7080.00	2096.00	6974.65	6952.39	556.79	0.00	1275419.92	3236034.22	40.086337	-104.656402
Warner 2B-10H-E165 BHL	14592.67	90.00	1.05	7080.00	2096.00	7067.14	7045.04	558.50	0.00	1275512.58	3236035.05	40.086591	-104.656396

Survey Type: Def Plan

Survey Error Model: ISCWSA Rev 0 *** 3-D 95.00% Confidence 2.7955 sigma
Survey Program:

Description	Part	MD From (ft)	MD To (ft)	EOU Freq (ft)	Hole Size (in)	Casing Diameter (in)	Expected Max Inclination (deg)	Survey Tool Type	Borehole / Survey
	1	0.000	13.000	1/100.000	13.500	9.625		NAL_MWD_PLUS_0.5_DEG- Depth Only	Original Hole / Warner 2B-10H-E165 Plan #0
	1	13.000	1800.000	1/100.000	13.500	9.625		NAL_MWD_PLUS_0.5_DEG	Original Hole / Warner 2B-10H-E165 Plan #0
	1	1800.000	14592.668	1/100.000	8.500	5.500		NAL_MWD_PLUS_0.5_DEG	Original Hole / Warner 2B-10H-E165 Plan #0

Warner 2B-10H-E165 Plan #0 Anti-Collision Summary Report

Analysis Date-24hr Time: August 02, 2021 - 15:56
Client: Crestone Peak Resources
Field: CO, Weld County (NAD 83 NZ) - 2019
Structure: Crestone Peak 10-1N-65W (Warner Pad)
Slot: Warner 2B-10H-E165
Well: Warner 2B-10H-E165
Borehole: Original Hole
Scan MD Range: 0.00ft - 14592.67ft

Analysis Method: 3D Least Distance
Reference Trajectory: Warner 2B-10H-E165 Plan #0 (Def Plan)
Depth Interval: Every 10.00 Measured Depth (ft)
Rule Set: NAL Procedure: D&M AntiCollision Standard S002
Min Pts: All local minima indicated.
Version / Patch: 2.10.826.8
Database \ Project: localhost\drilling-Colorado

Trajectory Error Model: ISCSA0 3-D 95.000% Confidence 2.7955 sigma, for subject well. For offset wells, error model version is specified with each well respectively.

Offset Trajectories Summary

Offset Selection Criteria

Wellhead distance scan: Not performed!
 Selection filters: Definitive Surveys - Definitive Plans - Definitive surveys exclude definitive plans
 - All Non-Def Surveys when no Def-Survey is set in a borehole - All Non-Def Plans when no Def-Plan is set in a borehole

Offset Trajectory	Separation			Allow Dev. (ft)	Sep. Fact.	Controlling Rule	Reference Trajectory		Risk Level			Alert	Status
	Ct-Ct (ft)	MAS (ft)	EOU (ft)				MD (ft)	TVD (ft)	Alert	Minor	Major		

Results highlighted: Sep-Factor separation <= 1.50 ft

Otatesen 1 GYRO 0' to 7992' - TA (Def Survey)

Fail Minor												
3852.15	32.81	3850.34	3819.34	N/A		MAS = 10.00 (m)	0.00	0.00				Surface
3852.14	32.81	3850.32	3819.33	N/A		MAS = 10.00 (m)	10.00	10.00				MinPts
3852.14	32.81	3850.32	3819.33	N/A		MAS = 10.00 (m)	13.00	13.00				WRP
3852.09	32.81	3849.95	3819.29			MAS = 10.00 (m)	120.00	120.00				MinPts
3852.25	32.81	3849.75	3819.44	5603.45		MAS = 10.00 (m)	200.00	200.00				MINPT-O-EOU
4465.30	34.13	4442.01	4431.17	205.87		OSF1.50	4700.00	4625.63				MinPt-O-SF
4509.44	33.62	4486.50	4475.82	211.19		OSF1.50	5300.00	5222.42				MinPt-O-SF
4519.39	32.95	4496.89	4486.44	216.21		OSF1.50	5950.00	5872.42				MinPt-O-SF
4526.31	33.14	4503.68	4493.17	215.22		OSF1.50	6410.00	6332.42				MinPt-O-SF
4524.55	33.13	4501.93	4491.42	215.19		OSF1.50	6500.00	6422.35				MinPt-O-SF
270.31	89.79	208.82	180.52	4.69		OSF1.50	11170.00	7080.00	OSF<5.00			Enter Alert
164.56	166.70	52.55	-2.14	1.48		OSF1.50	11360.00	7080.00		OSF<1.50		Enter Minor
162.53	172.62	46.81	-10.09	1.41		OSF1.50	11390.00	7080.00				MinPt-CtCt
162.86	173.21	46.80	-10.35	1.41		OSF1.50	11397.00	7080.00				MinPts
170.96	170.99	56.43	-0.04	1.50		OSF1.50	11440.23	7080.00		OSF>1.50		Exit Minor
342.60	105.25	271.90	237.36	4.94		OSF1.50	11690.00	7080.00	OSF>5.00			Exit Alert
3207.27	43.88	3177.48	3163.39	113.74		OSF1.50	14592.67	7080.00				TD

Warner 2A-10H-E165 Plan #0 (Def Plan)

Warning Alert												
9.80	8.04	8.82	1.77	N/A		MAS = 2.45 (m)	0.00	0.00	CtCt<=15m<15.00			Enter Alert
9.80	8.04	8.82	1.77	N/A		MAS = 2.45 (m)	13.00	13.00				WRP
9.80	8.04	7.92	1.77	9.78		MAS = 2.45 (m)	200.00	200.00				MinPts
9.84	8.04	7.95	1.81	9.74		MAS = 2.45 (m)	220.00	220.00				MinPt-O-SF
48.39	8.04	43.84	40.35	13.32		MAS = 2.45 (m)	810.00	805.55	CtCt<=15m>15.00			Exit Alert
161.16	20.55	147.13	140.61	12.29		OSF1.50	1800.00	1777.76				MinPt-O-SF
411.78	44.43	381.83	367.35	14.18		OSF1.50	4000.00	3938.21				MinPt-O-SF
504.79	44.50	474.79	460.29	17.37		OSF1.50	6500.00	6422.35				MinPt-CtCt
490.93	148.06	391.90	342.87	5.00		OSF1.50	9830.00	7080.00	OSF<5.00			Enter Alert
480.28	241.61	318.88	238.67	2.99		OSF1.50	11420.00	7080.00				MinPt-CtCt
506.22	429.97	219.25	76.25	1.77		OSF1.50	14592.67	7080.00				MinPts

Warner 2C-10H-E165 Plan #0 (Def Plan)

Warning Alert												
10.08	8.25	9.09	1.82	N/A		MAS = 2.52 (m)	0.00	0.00	CtCt<=15m<15.00			Enter Alert
10.08	8.25	9.09	1.82	N/A		MAS = 2.52 (m)	13.00	13.00				WRP
10.08	8.25	8.19	1.82	10.08		MAS = 2.52 (m)	200.00	200.00				MinPts
10.09	8.25	8.18	1.84	9.84		MAS = 2.52 (m)	220.00	220.00				MINPT-O-EOU
10.44	8.25	8.44	2.19	9.28		MAS = 2.52 (m)	300.00	299.98				MinPt-O-SF
48.90	12.85	40.00	36.05	6.06		OSF1.50	1230.00	1218.00	CtCt<=15m>15.00			Exit Alert
79.61	21.32	65.07	58.29	5.80		OSF1.50	1800.00	1777.76				MinPt-O-SF
236.26	55.83	198.71	180.43	6.43		OSF1.50	4697.41	4623.09				MinPt-O-SF
471.00	142.10	375.94	328.90	5.00		OSF1.50	9990.00	7080.00	OSF<5.00			Enter Alert
456.26	390.96	195.29	65.30	1.75		OSF1.50	14590.00	7080.00				MinPt-CtCt
456.28	391.19	195.16	65.09	1.75		OSF1.50	14592.67	7080.00				MinPts

Warner 2D-10H-E165 Plan #0 (Def Plan)

Warning Alert												
20.15	16.31	19.17	3.84	N/A		MAS = 4.97 (m)	0.00	0.00	CtCt<=15m<15.00			Enter Alert
20.15	16.31	19.17	3.84	N/A		MAS = 4.97 (m)	13.00	13.00				WRP
20.15	16.31	18.27	3.84	21.26		MAS = 4.97 (m)	200.00	200.00				MinPts
20.16	16.31	18.26	3.84	20.95		MAS = 4.97 (m)	210.00	210.00				MINPT-O-EOU
20.63	16.31	18.61	4.31	18.93		MAS = 4.97 (m)	300.00	299.98				MinPt-O-SF
48.74	16.31	43.18	32.43	10.44		MAS = 4.97 (m)	890.00	884.11	CtCt<=15m>15.00			Exit Alert
125.61	21.41	111.01	104.20	9.15		OSF1.50	1800.00	1777.76				MinPt-O-SF
370.40	56.02	332.73	314.38	10.07		OSF1.50	4697.41	4623.09				MinPt-O-SF
923.50	278.11	737.76	645.39	4.99		OSF1.50	12030.00	7080.00	OSF<5.00			Enter Alert
803.71	427.96	518.07	375.75	2.82		OSF1.50	14580.00	7080.00				MinPt-CtCt
803.75	428.98	517.43	374.76	2.81		OSF1.50	14592.67	7080.00				MinPts

Warner 2E-10H-E165 Plan #0 (Def Plan)

Warning Alert												
30.23	24.38	29.24	5.85	N/A		MAS = 7.43 (m)	0.00	0.00	CtCt<=15m<15.00			Enter Alert
30.23	24.38	29.24	5.85	N/A		MAS = 7.43 (m)	13.00	13.00				WRP
30.23	24.38	28.34	5.85	32.43		MAS = 7.43 (m)	200.00	200.00				MinPts
30.23	24.38	28.33	5.86	31.89		MAS = 7.43 (m)	210.00	210.00				MINPT-O-EOU
30.81	24.38	28.77	6.44	28.12		MAS = 7.43 (m)	300.00	299.98				MinPt-O-SF
48.82	24.38	44.92	24.44	16.39		MAS = 7.43 (m)	710.00	707.31	CtCt<=15m>15.00			Exit Alert
77.47	24.38	71.11	53.10	14.22		MAS = 7.43 (m)	970.00	962.67				MinPt-O-SF
661.12	55.41	623.85	605.71	18.19		OSF1.50	4697.41	4623.09				MinPt-O-SF
1299.71	50.84	1265.50	1248.88	39.08		OSF1.50	7590.00	7080.00				MINPT-O-EOU
1305.15	392.60	1043.10	912.56	5.00		OSF1.50	13910.00	7080.00	OSF<5.00			Enter Alert
1299.63	432.75	1010.80	866.88	4.51		OSF1.50	14580.00	7080.00				MinPt-CtCt
1299.71	433.64	1010.29	866.07	4.50		OSF1.50	14592.67	7080.00				MinPts

Randle Red XX 3-4D GYRO 0' to 8040' - PA (Def Survey)

Warning Alert												
7061.94	32.81	7060.13	7029.13	N/A		MAS = 10.00 (m)	0.00	0.00				Surface
7061.90	32.81	7060.08	7029.10	844815.98		MAS = 10.00 (m)	13.00	13.00				WRP

Offset Trajectory	Separation			Allow Dev. (ft)	Sep. Fact.	Controlling Rule	Reference Trajectory		Risk Level			Alert	Status
	Ct-Ct (ft)	MAS (ft)	EOU (ft)				MD (ft)	TVD (ft)	Alert	Minor	Major		
Willow 22-20-2L - Plan (Def Plan)	7061.81	32.81	7059.35	7029.00	10896.07	MAS = 10.00 (m)	190.00	190.00				MinPts	
	7061.81	32.81	7059.35	7029.00	10190.29	MAS = 10.00 (m)	200.00	200.00				MINPT-O-EOU	
	7063.21	32.81	7060.63	7030.40	9299.32	MAS = 10.00 (m)	300.00	299.98				MinPt-O-SF	
	7756.93	32.81	7735.15	7724.12	384.33	MAS = 10.00 (m)	4700.00	4625.63				MinPt-O-SF	
	7792.34	32.81	7772.70	7759.53	431.93	MAS = 10.00 (m)	5820.00	5742.42				MINPT-O-EOU	
	7792.30	32.81	7772.74	7759.49	433.79	MAS = 10.00 (m)	5870.00	5792.42				MinPts	
	620.78	193.64	489.46	427.13	4.93	OSF1.50	14140.00	7080.00	OSF<5.00			Enter Alert	
	380.58	307.28	175.06	73.29	1.86	OSF1.50	14592.67	7080.00				MinPts	
													Warning Alert
	7237.04	280.66	7049.32	6956.37	38.92	OSF1.50	0.00	0.00				Surface	
Willow 22-18-3L - Plan (Def Plan)	7224.16	280.74	7036.39	6943.41	38.84	OSF1.50	13.00	13.00				WRP	
	941.95	286.47	749.98	655.47	4.97	OSF1.50	6340.00	6262.42	OSF<5.00			Enter Alert	
	551.60	278.05	363.35	273.55	3.02	OSF1.50	6850.00	6750.61				MinPt-O-SF	
	541.71	271.61	357.51	270.10	3.04	OSF1.50	6890.00	6783.65				MinPt-O-ADP	
	538.62	267.83	356.82	270.79	3.07	OSF1.50	6910.00	6799.69				MINPT-O-EOU	
	538.26	259.22	359.98	277.04	3.17	OSF1.50	6950.00	6830.73				MinPt-CtCt	
	622.57	196.07	487.54	426.50	4.99	OSF1.50	7190.00	6983.35	OSF>5.00			Exit Alert	
	7969.12	67.81	7921.60	7901.31	196.22	OSF1.50	14592.67	7080.00				TD	
													Warning Alert
	7323.47	286.20	7132.07	7037.27	38.62	OSF1.50	0.00	0.00				Surface	
Willow 22-21-3L - Plan (Def Plan)	7310.66	286.31	7119.18	7024.35	38.54	OSF1.50	13.00	13.00				WRP	
	1098.93	332.83	876.18	766.10	4.98	OSF1.50	6270.00	6192.42	OSF<5.00			Enter Alert	
	641.86	398.82	372.99	243.04	2.44	OSF1.50	6930.00	6815.38				MinPt-O-SF	
	640.87	398.07	372.45	242.80	2.44	OSF1.50	6940.00	6823.10				MinPt-O-ADP	
	640.17	397.19	372.28	242.97	2.44	OSF1.50	6950.00	6830.73				MINPT-O-EOU	
	639.58	395.05	373.03	244.53	2.45	OSF1.50	6970.00	6845.71				MinPt-CtCt	
	878.42	273.38	691.87	605.04	4.98	OSF1.50	7430.00	7067.05	OSF>5.00			Exit Alert	
	7972.69	62.41	7928.73	7910.28	215.88	OSF1.50	14592.67	7080.00				TD	
													Warning Alert
	7284.92	279.01	7098.30	7005.90	39.41	OSF1.50	0.00	0.00				Surface	
Willow 22-17-2L - Plan (Def Plan)	7272.02	279.09	7085.36	6992.94	39.33	OSF1.50	13.00	13.00				WRP	
	1117.83	338.71	891.32	779.12	4.97	OSF1.50	6260.00	6182.42	OSF<5.00			Enter Alert	
	652.49	426.76	365.18	225.72	2.31	OSF1.50	6950.00	6830.73				MinPt-O-SF	
	652.01	426.33	364.95	225.68	2.31	OSF1.50	6960.00	6838.27				MinPts	
	651.81	425.77	365.08	226.05	2.31	OSF1.50	6970.00	6845.71				MinPt-CtCt	
	957.08	297.70	754.47	659.38	4.97	OSF1.50	7510.00	7077.78	OSF>5.00			Exit Alert	
	7977.17	89.94	7914.89	7887.23	144.10	OSF1.50	14592.67	7080.00				TD	
													Warning Alert
	7302.58	290.31	7108.43	7012.27	37.96	OSF1.50	0.00	0.00				Surface	
	7289.81	290.42	7095.59	6999.38	37.88	OSF1.50	13.00	13.00				WRP	
Randle Red XX 3-2D GYRO+BLIND 0' to 8034' - PA (Def Survey)	1278.25	387.60	1019.15	890.66	4.97	OSF1.50	6110.00	6032.42	OSF<5.00			Enter Alert	
	748.65	535.29	389.14	213.36	2.11	OSF1.50	6930.00	6815.38				MinPt-O-SF	
	748.32	535.03	388.94	213.29	2.11	OSF1.50	6940.00	6823.10				MinPts	
	748.22	534.63	389.07	213.59	2.11	OSF1.50	6950.00	6830.73				MinPt-CtCt	
	1141.79	353.96	901.75	787.83	4.96	OSF1.50	7630.00	7080.00	OSF>5.00			Exit Alert	
	7983.00	82.17	7925.90	7900.83	159.06	OSF1.50	14592.67	7080.00				TD	
													Warning Alert
	6011.10	32.81	6009.29	5978.29	N/A	MAS = 10.00 (m)	0.00	0.00				Surface	
	6011.06	32.81	6009.23	5978.25	568350.44	MAS = 10.00 (m)	13.00	13.00				WRP	
	6011.04	32.81	6009.19	5978.23	159086.82	MAS = 10.00 (m)	30.00	30.00				MinPts	
Willow 22-5-4L - Plan (Def Plan)	6011.13	32.81	6009.13	5978.33	31676.86	MAS = 10.00 (m)	90.00	90.00				MINPT-O-EOU	
	6011.29	32.81	6009.12	5978.48	16692.17	MAS = 10.00 (m)	130.00	130.00				MINPT-O-EOU	
	6624.14	38.85	6597.71	6585.29	266.72	OSF1.50	4700.00	4625.63				MinPt-O-SF	
	6660.97	39.21	6634.30	6621.76	265.60	OSF1.50	5000.00	4922.70				MinPt-O-SF	
	6664.85	39.24	6638.16	6625.61	265.58	OSF1.50	5050.00	4972.56				MinPt-O-SF	
	6676.93	39.31	6650.19	6637.62	265.57	OSF1.50	5300.00	5222.42				MinPt-O-SF	
	6692.81	39.34	6666.05	6653.47	265.97	OSF1.50	5640.00	5562.42				MinPt-O-SF	
	1048.28	321.23	832.30	727.05	4.95	OSF1.50	12890.00	7080.00	OSF<5.00			Enter Alert	
	776.11	369.99	528.64	406.12	3.16	OSF1.50	13550.00	7080.00				MinPt-O-SF	
	775.56	369.60	528.38	405.96	3.16	OSF1.50	13560.00	7080.00				MinPt-O-ADP	
Ruegge 3Q-4H-N165 MWD 0' to 12265' - PR (Def Survey)	775.15	369.17	528.28	405.98	3.16	OSF1.50	13570.00	7080.00				MINPT-O-EOU	
	774.67	367.55	528.95	407.12	3.17	OSF1.50	13600.00	7080.00				MinPt-CtCt	
	956.90	290.25	762.87	666.65	4.96	OSF1.50	14160.00	7080.00	OSF>5.00			Exit Alert	
	1259.99	234.64	1103.03	1025.36	8.10	OSF1.50	14592.67	7080.00				TD	
													Warning Alert
	7487.27	291.96	7292.02	7195.30	38.70	OSF1.50	0.00	0.00				Surface	
	7474.49	292.08	7279.16	7182.41	38.62	OSF1.50	13.00	13.00				WRP	
	1285.33	388.52	1025.62	896.81	4.98	OSF1.50	6290.00	6212.42	OSF<5.00			Enter Alert	
	844.91	489.23	516.16	355.69	2.61	OSF1.50	7000.00	6867.47				MinPt-O-SF	
	844.48	488.89	515.91	355.59	2.61	OSF1.50	7010.00	6874.53				MinPts	
Ruegge 3R-4H-N165 MWD 0' to 12660' - PR (Def Survey)	844.27	488.45	515.96	355.82	2.61	OSF1.50	7020.00	6881.49				MinPt-CtCt	
	1154.69	355.61	913.60	799.08	4.99	OSF1.50	7610.00	7080.00	OSF>5.00			Exit Alert	
	7987.15	82.91	7929.45	7904.24	158.31	OSF1.50	14592.67	7080.00				TD	
													Warning Alert
	4489.79	32.81	4487.98	4456.98	N/A	MAS = 10.00 (m)	0.00	0.00				Surface	
	4489.68	32.81	4487.83	4456.87	134497.52	MAS = 10.00 (m)	13.00	13.00				MinPt-O-SF	
	4489.56	32.81	4487.66	4456.75	54595.28	MAS = 10.00 (m)	50.00	50.00				MinPts	
	993.49	142.27	897.23	851.22	10.75	OSF1.50	10380.00	7080.00				MinPt-CtCt	
	993.81	143.32	896.86	850.48	10.67	OSF1.50	10410.00	7080.00				MINPT-O-EOU	
	994.37	144.03	896.97	850.34	10.62	OSF1.50	10430.00	7080.00				MinPt-O-ADP	
Ruegge 3R-4H-N165 MWD 0' to 12660' - PR (Def Survey)	1020.83	193.93	890.11	826.89	8.04	OSF1.50	11440.00	7080.00				MinPt-CtCt	
	1028.47	223.16	878.30	805.30	7.02	OSF1.50	12000.00	7080.00				MINPT-O-EOU	
	1020.53	270.33	838.89	750.21	5.73	OSF1.50	12750.00	7080.00				MinPt-CtCt	
	1037.57	314.99	826.17	722.58	4.99	OSF1.50	13490.00	7080.00				Enter Alert	
	1023.06	374.96	771.66	648.11	4.12	OSF1.50	14410.00	7080.00	OSF<5.00			MinPt-CtCt	
	1024.02	386.10	765.21	637.93	4.01	OSF1.50	14592.67	7080.00				MinPts	
													Warning Alert
	4417.79	32.81	4405.99	4384.98	442.17	MAS = 10.00 (m)	0.00	0.00				Surface	
													Warning Alert
													Warning Alert

Offset Trajectory	Separation			Allow Dev. (ft)	Sep. Fact.	Controlling Rule	Reference Trajectory		Risk Level			Alert	Status
	Ct-Ct (ft)	MAS (ft)	EOU (ft)				MD (ft)	TVD (ft)	Alert	Minor	Major		
	4412.30	32.81	4400.28	4379.49	432.39	MAS = 10.00 (m)	13.00	13.00				WRP	
	1011.48	145.59	913.01	865.89	10.69	OSF1.50	10320.00	7080.00				MinPt-CtCt	
	1012.13	147.74	912.26	864.40	10.53	OSF1.50	10380.00	7080.00				MINPT-O-EQU	
	1013.02	148.79	912.46	864.23	10.46	OSF1.50	10410.00	7080.00				MinPt-O-ADP	
	1012.87	242.90	849.53	769.97	6.34	OSF1.50	12230.00	7080.00				MinPt-CtCt	
	1017.61	258.49	843.90	759.12	5.98	OSF1.50	12540.00	7080.00				MINPT-O-EQU	
	1020.38	262.55	843.97	757.82	5.90	OSF1.50	12620.00	7080.00				MINPT-O-EQU	
	1026.19	271.75	843.65	754.43	5.73	OSF1.50	12770.00	7080.00				MINPT-O-EQU	
	1032.97	313.04	822.85	719.93	5.00	OSF1.50	13350.00	7080.00	OSF<5.00			Enter Alert	
	1032.01	319.99	817.27	712.01	4.88	OSF1.50	13480.00	7080.00				MinPt-CtCt	
	1041.87	352.59	805.43	689.28	4.47	OSF1.50	14060.00	7080.00				MINPT-O-EQU	
	1037.76	391.07	775.63	646.69	4.01	OSF1.50	14580.00	7080.00				MinPts	
	1037.72	390.76	775.80	646.96	4.01	OSF1.50	14590.00	7080.00				MinPt-CtCt	
	1037.72	390.62	775.90	647.11	4.01	OSF1.50	14592.67	7080.00				TD	
Willow 22-15-3L - Plan (Def Plan)													
												Warning Alert	
	7420.19	305.33	7216.03	7114.85	36.66	OSF1.50	0.00	0.00				Surface	
	7407.54	305.49	7203.28	7102.05	36.58	OSF1.50	13.00	13.00				WRP	
	1599.89	483.98	1276.71	1115.91	4.97	OSF1.50	6040.00	5962.42	OSF<5.00			Enter Alert	
	1113.95	640.20	685.18	473.75	2.62	OSF1.50	6970.00	6845.71				MinPts	
	1550.97	477.09	1229.35	1073.88	4.95	OSF1.50	7830.00	7080.00	OSF>5.00			Exit Alert	
	8022.09	134.79	7929.90	7887.30	94.07	OSF1.50	14592.67	7080.00				TD	
Willow 22-14-2L - Plan (Def Plan)													
												Warning Alert	
	7413.69	314.46	7203.45	7099.23	35.56	OSF1.50	0.00	0.00				Surface	
	7401.13	314.64	7190.76	7086.49	35.48	OSF1.50	13.00	13.00				WRP	
	1744.28	525.98	1393.09	1218.30	4.98	OSF1.50	5980.00	5902.42	OSF<5.00			Enter Alert	
	1292.44	672.87	842.20	619.57	2.89	OSF1.50	6950.00	6830.73				MinPts	
	1727.65	526.08	1373.65	1201.58	4.99	OSF1.50	7880.00	7080.00	OSF>5.00			Exit Alert	
	8049.35	162.59	7938.67	7886.75	77.46	OSF1.50	14592.67	7080.00				TD	
Willow 22-4-4L - Plan (Def Plan)													
												Warning Alert	
	7652.50	332.17	7430.45	7320.33	34.74	OSF1.50	0.00	0.00				Surface	
	7640.10	332.39	7417.90	7307.71	34.66	OSF1.50	13.00	13.00				WRP	
	1997.69	601.42	1596.21	1396.27	4.99	OSF1.50	6220.00	6142.42	OSF<5.00			Enter Alert	
	1724.40	687.45	1264.83	1036.95	3.78	OSF1.50	7000.00	6867.47				MinPt-CtCt	
	1724.44	687.64	1264.73	1036.80	3.77	OSF1.50	7010.00	6874.53				MINPT-O-EQU	
	1724.59	687.79	1264.76	1036.80	3.77	OSF1.50	7020.00	6881.49				MinPts	
	2013.79	612.68	1602.71	1401.12	4.98	OSF1.50	7810.00	7080.00	OSF>5.00			Exit Alert	
	8124.50	218.65	7976.45	7905.85	57.49	OSF1.50	14592.67	7080.00				TD	
Cofler 13C-34HZ MWD 0' to 11790' - PR (Def Survey)													
												Pass	
	10817.99	72.42	10769.11	10745.57	229.79	OSF1.50	0.00	0.00				Surface	
	10809.24	72.51	10760.29	10736.72	229.30	OSF1.50	13.00	13.00				WRP	
	10664.54	71.62	10616.19	10592.92	229.11	OSF1.50	230.00	230.00				MinPt-O-SF	
	952.84	78.00	896.63	874.84	21.58	OSF1.50	14592.67	7080.00				MinPts	
Cofler 13N-34HZ MWD 0' to 11496' - PR (Def Survey)													
												Pass	
	10668.77	65.37	10624.58	10603.40	251.76	OSF1.50	0.00	0.00				Surface	
	10660.15	65.46	10615.91	10594.69	251.18	OSF1.50	13.00	13.00				MinPt-O-SF	
	8979.61	44.07	8948.79	8935.54	338.63	OSF1.50	4697.41	4623.09				MinPt-O-SF	
	980.41	143.19	880.80	837.22	11.11	OSF1.50	14592.67	7080.00				MinPts	
Joker 26N2-9HZ MWD 0' - 11975' - PR (Def Survey)													
												Pass	
	2713.53	32.81	2711.71	2680.72	N/A	MAS = 10.00 (m)	0.00	0.00				Surface	
	2713.52	32.81	2711.70	2680.71	373078.52	MAS = 10.00 (m)	13.00	13.00				WRP	
	2668.08	32.81	2657.29	2635.29	295.16	MAS = 10.00 (m)	1490.00	1473.33				MinPts	
	2658.61	32.81	2656.67	2635.80	263.45	MAS = 10.00 (m)	1610.00	1591.17				MINPT-O-EQU	
	1037.53	128.01	951.63	909.52	12.30	OSF1.50	7290.00	7027.33				MinPt-CtCt	
	1036.46	138.37	943.66	898.09	11.35	OSF1.50	7480.00	7074.79				MinPt-CtCt	
	1025.87	186.93	900.70	838.94	8.29	OSF1.50	8350.00	7080.00				MinPt-CtCt	
	1007.41	243.65	844.43	763.76	6.23	OSF1.50	9270.00	7080.00				MinPts	
	1007.31	243.53	844.40	763.78	6.24	OSF1.50	9280.00	7080.00				MINPT-O-EQU	
	1007.31	243.39	844.49	763.92	6.24	OSF1.50	9290.00	7080.00				MinPt-CtCt	
	5410.82	53.82	5374.40	5357.00	155.40	OSF1.50	14592.67	7080.00				TD	
Cofler 35N-34HZ MWD 0' to 11687' - PR (Def Survey)													
												Pass	
	10727.14	79.41	10673.59	10647.73	207.34	OSF1.50	0.00	0.00				Surface	
	10718.51	79.50	10664.90	10639.00	206.91	OSF1.50	13.00	13.00				WRP	
	10382.86	77.78	10330.40	10305.08	204.98	OSF1.50	550.00	549.13				MinPt-O-SF	
	1009.01	180.40	884.79	828.61	8.87	OSF1.50	14592.67	7080.00				MinPts	
Chapin 43-4 GYRO 0' to 8023' - PA (Def Survey)													
												Pass	
	4110.23	32.81	4108.42	4077.42	N/A	MAS = 10.00 (m)	0.00	0.00				Surface	
	4110.17	32.81	4108.34	4077.36	286126.21	MAS = 10.00 (m)	13.00	13.00				WRP	
	4109.90	32.81	4107.28	4077.09	5051.68	MAS = 10.00 (m)	210.00	210.00				MinPts	
	4109.91	32.81	4107.27	4077.10	4924.90	MAS = 10.00 (m)	220.00	220.00				MINPT-O-EQU	
	4111.82	32.81	4108.98	4079.01	4030.89	MAS = 10.00 (m)	320.00	319.96				MinPt-O-SF	
	4866.47	32.81	4845.98	4833.66	257.61	MAS = 10.00 (m)	4700.00	4625.63				MinPt-O-SF	
	4928.25	32.81	4908.07	4895.44	265.25	MAS = 10.00 (m)	5300.00	5222.42				MinPt-O-SF	
	4942.97	32.81	4922.78	4910.16	265.84	MAS = 10.00 (m)	5930.00	5852.42				MinPt-O-SF	
	1039.47	183.36	916.69	856.11	8.57	OSF1.50	11670.00	7080.00				MinPt-CtCt	
	1039.66	183.91	916.53	855.76	8.54	OSF1.50	11690.00	7080.00				MINPT-O-EQU	
	1039.91	184.15	916.60	855.75	8.53	OSF1.50	11700.00	7080.00				MinPt-O-ADP	
	1043.38	185.29	919.32	858.09	8.51	OSF1.50	11760.00	7080.00				MinPt-O-SF	
	3101.56	94.22	3038.22	3007.34	50.21	OSF1.50	14592.67	7080.00				TD	
Joker 26N1-9HZ MWD 0' to 12052' - PR (Def Survey)													
												Pass	
	2724.31	32.81	2722.49	2691.50	N/A	MAS = 10.00 (m)	0.00	0.00				Surface	
	2724.29	32.81	2722.47	2691.48	206371.18	MAS = 10.00 (m)	13.00	13.00				WRP	
	2723.96	32.81	2721.65	2691.15	5503.35	MAS = 10.00 (m)	140.00	140.00				MinPts	
	2724.10	32.81	2721.49	2691.29	3405.94	MAS = 10.00 (m)	200.00	200.00				MINPT-O-EQU	
	2694.40	32.81	2684.54	2661.59	334.93	MAS = 10.00 (m)	1440.00	1424.23				MinPts	
	2694.61	32.81	2684.33	2661.80	317.98	MAS = 10.00 (m)	1500.00	1483.15				MINPT-O-EQU	
	1213.05	136.89	1121.25	1076.16	13.43	OSF1.50	7510.00	7077.78				MinPt-CtCt	</

Offset Trajectory	Separation			Allow Dev. (ft)	Sep. Fact.	Controlling Rule	Reference Trajectory		Risk Level			Alert	Status
	Ct-Ct (ft)	MAS (ft)	EOU (ft)				MD (ft)	TVD (ft)	Alert	Minor	Major		
Joker 1N3-9HZ MWD 0' to 11936' - PR (Def Survey)	1211.83	216.76	1066.78	995.07	8.44	OSF1.50	8950.00	7080.00				MinPt-O-ADP	
	1249.18	240.26	1088.44	1008.93	7.84	OSF1.50	9400.00	7080.00				MinPt-O-SF	
	5478.03	70.64	5430.40	5407.39	118.99	OSF1.50	14592.67	7080.00				TD	
												Pass	
Chapin 44-4 GYRO 0' to 8028' - PA (Def Survey)	2737.86	32.81	2736.05	2705.06	N/A	MAS = 10.00 (m)	0.00	0.00				MinPts	
	2737.87	32.81	2736.05	2705.06	743730.59	MAS = 10.00 (m)	13.00	13.00				WRP	
	2738.01	32.81	2735.97	2705.20	11799.22	MAS = 10.00 (m)	90.00	90.00				MINPT-O-EQU	
	2738.17	32.81	2735.93	2705.36	6362.10	MAS = 10.00 (m)	130.00	130.00				MINPT-O-EQU	
	2721.65	32.81	2713.70	2688.84	443.52	MAS = 10.00 (m)	1180.00	1168.90				MinPts	
	2721.97	32.81	2713.41	2689.16	403.43	MAS = 10.00 (m)	1260.00	1247.46				MINPT-O-EQU	
	1317.52	124.53	1233.96	1192.98	16.06	OSF1.50	7270.00	7019.54				MinPt-CiCt	
	1333.27	171.04	1218.71	1162.23	11.79	OSF1.50	8180.00	7080.00				MINPT-O-EQU	
	1342.04	222.18	1193.38	1119.85	9.12	OSF1.50	8980.00	7080.00				MinPt-CiCt	
	1344.85	240.11	1184.24	1104.74	8.45	OSF1.50	9280.00	7080.00				MINPT-O-EQU	
	1345.02	240.33	1184.27	1104.69	8.44	OSF1.50	9290.00	7080.00				MinPts	
	5507.93	78.52	5455.05	5429.41	107.38	OSF1.50	14592.67	7080.00				TD	
												Pass	
	3000.36	32.81	2998.54	2967.55	N/A	MAS = 10.00 (m)	0.00	0.00				Surface	
	3000.28	32.81	2998.45	2967.47	165139.92	MAS = 10.00 (m)	13.00	13.00				MinPt-O-SF	
	2998.82	32.81	2996.16	2966.01	3542.56	MAS = 10.00 (m)	220.00	220.00				MinPts	
	3269.84	32.81	3260.65	3237.03	431.12	MAS = 10.00 (m)	1960.00	1934.88				MinPt-O-SF	
	3790.19	32.81	3771.55	3757.38	222.37	MAS = 10.00 (m)	4700.00	4625.63				MinPt-O-SF	
	3855.24	32.81	3837.37	3822.44	236.82	MAS = 10.00 (m)	5300.00	5222.42				MinPt-O-SF	
	3867.34	32.81	3849.70	3834.53	241.21	MAS = 10.00 (m)	5560.00	5482.42				MinPt-O-SF	
	3873.32	32.81	3855.68	3840.51	241.37	MAS = 10.00 (m)	5770.00	5692.42				MinPt-O-SF	
	3874.59	32.81	3856.94	3841.79	241.39	MAS = 10.00 (m)	5850.00	5772.42				MinPt-O-SF	
	3879.40	32.81	3861.64	3846.58	240.00	MAS = 10.00 (m)	6130.00	6052.42				MinPt-O-SF	
	1449.47	131.88	1361.01	1317.59	16.67	OSF1.50	10450.00	7080.00				MinPt-CiCt	
	1449.67	132.46	1360.83	1317.21	16.60	OSF1.50	10470.00	7080.00				MINPT-O-EQU	
	1450.16	133.02	1360.94	1317.14	16.53	OSF1.50	10490.00	7080.00				MinPt-O-SF	
	1468.38	137.06	1376.47	1331.32	16.24	OSF1.50	10680.00	7080.00				MinPt-O-SF	
	4409.35	89.27	4349.30	4320.07	75.42	OSF1.50	14592.67	7080.00				TD	
Olin 41-4 MWD 0' to 8158' - PR (Def Survey)	6769.06	32.81	6767.25	6736.25	N/A	MAS = 10.00 (m)	0.00	0.00				Surface	
	6768.96	32.81	6767.12	6736.16	229323.64	MAS = 10.00 (m)	13.00	13.00				MinPt-O-SF	
	6768.82	32.81	6766.90	6736.01	64807.78	MAS = 10.00 (m)	60.00	60.00				MinPts	
	6768.93	32.81	6766.43	6736.12	9857.23	MAS = 10.00 (m)	200.00	200.00				MINPT-O-EQU	
	7020.36	32.81	7010.08	6987.56	808.36	MAS = 10.00 (m)	1800.00	1777.76				MinPt-O-SF	
	7250.42	32.81	7237.50	7217.61	640.30	MAS = 10.00 (m)	3060.00	3015.11				MinPt-O-SF	
	7531.35	32.81	7511.36	7498.54	409.68	MAS = 10.00 (m)	4700.00	4625.63				MinPt-O-SF	
	7578.49	32.81	7559.04	7545.68	424.42	MAS = 10.00 (m)	5300.00	5222.42				MinPt-O-SF	
	7598.49	36.00	7573.96	7562.49	331.30	OSF1.50	5860.00	5782.42				MinPts	
	7604.63	37.96	7578.79	7566.68	313.73	OSF1.50	6150.00	6072.42				MinPt-O-ADP	
	1466.83	299.26	1266.42	1167.57	7.41	OSF1.50	14360.00	7080.00				MinPt-CiCt	
	1466.98	299.73	1266.28	1167.24	7.39	OSF1.50	14380.00	7080.00				MINPT-O-EQU	
	1467.15	299.95	1266.33	1167.20	7.39	OSF1.50	14390.00	7080.00				MinPt-O-ADP	
	1471.01	301.21	1269.47	1169.80	7.37	OSF1.50	14470.00	7080.00				MinPt-O-SF	
	1485.27	301.48	1283.74	1183.79	7.42	OSF1.50	14592.67	7080.00				TD	
												Pass	
Olin 42-4A MWD 0' to 8270' - PA (Def Survey)	6762.74	32.81	6760.92	6729.93	N/A	MAS = 10.00 (m)	0.00	0.00				Surface	
	6762.62	32.81	6760.78	6729.82	193679.76	MAS = 10.00 (m)	13.00	13.00				MinPt-O-SF	
	6762.43	32.81	6759.92	6729.62	9794.53	MAS = 10.00 (m)	200.00	200.00				MinPts	
	7071.76	32.81	7060.79	7038.95	754.83	MAS = 10.00 (m)	2150.00	2121.47				MinPt-O-SF	
	1476.96	250.52	1309.09	1226.44	8.92	OSF1.50	13090.00	7080.00				MinPt-CiCt	
	1477.26	251.46	1308.81	1225.80	8.88	OSF1.50	13120.00	7080.00				MINPT-O-EQU	
	1477.50	251.75	1308.87	1225.75	8.87	OSF1.50	13130.00	7080.00				MinPt-O-ADP	
	1485.56	254.37	1315.38	1231.19	8.81	OSF1.50	13250.00	7080.00				MinPt-O-SF	
	2104.33	218.75	1957.95	1885.57	14.52	OSF1.50	14592.67	7080.00				TD	
												Pass	
Rocky 38N-33HZ MWD 0' to 13397' - PR (Def Survey)	10752.02	76.68	10700.30	10675.34	215.38	OSF1.50	0.00	0.00				Surface	
	10743.37	76.71	10691.62	10666.66	215.12	OSF1.50	13.00	13.00				MinPt-O-SF	
	9077.33	43.76	9046.57	9033.57	349.00	OSF1.50	4697.41	4623.09				MinPt-O-SF	
	1477.49	315.35	1264.20	1162.14	7.19	OSF1.50	14592.67	7080.00				MinPts	
Colfer 14N-34HZ MWD 0' to 11568' - PR (Def Survey)	10791.34	74.29	10741.21	10717.05	223.31	OSF1.50	0.00	0.00				Surface	
	10782.83	74.37	10732.65	10708.46	222.88	OSF1.50	13.00	13.00				WRP	
	10648.67	73.51	10699.06	10675.16	222.78	OSF1.50	220.00	220.00				MinPt-O-SF	
	8114.36	40.77	8084.94	8073.60	357.22	OSF1.50	7500.00	7076.92				MinPt-O-SF	
	1505.36	299.45	1302.56	1205.91	7.74	OSF1.50	14592.67	7080.00				MinPts	
Colfer 14C-34HZ MWD 0' to 11779' - PR (Def Survey)	10969.81	80.46	10915.56	10889.35	209.18	OSF1.50	0.00	0.00				Surface	
	10961.20	80.55	10906.90	10880.65	208.77	OSF1.50	13.00	13.00				WRP	
	10659.33	78.96	10606.08	10580.37	207.22	OSF1.50	490.00	489.50				MinPt-O-SF	
	1757.35	328.29	1535.73	1429.06	8.20	OSF1.50	14592.67	7080.00				MinPts	
HDI KF 10-1H MWD 0' to 15725' - PR (Def Survey)	5038.65	32.81	5036.75	5005.84	61610.92	MAS = 10.00 (m)	0.00	0.00				Surface	
	5038.62	32.81	5036.69	5005.81	41919.32	MAS = 10.00 (m)	13.00	13.00				WRP	
	1875.80	158.54	1768.90	1717.26	18.13	OSF1.50	7770.00	7080.00				MinPt-CiCt	
	1875.86	158.68	1768.86	1717.18	18.11	OSF1.50	7790.00	7080.00				MINPT-O-EQU	
	1875.92	158.75	1768.87	1717.18	18.11	OSF1.50	7800.00	7080.00				MinPt-O-ADP	
	1877.33	184.24	1753.29	1693.08	15.56	OSF1.50	8230.00	7080.00				MinPts	
	1877.35	184.25	1753.30	1693.09	15.56	OSF1.50	8240.00	7080.00				MinPt-O-SF	
	1924.18	218.96	1776.97	1705.21	13.38	OSF1.50	8960.00	7080.00				MINPT-O-EQU	
	1924.63	219.49	1777.07	1705.14	13.35	OSF1.50	8970.00	7080.00				MinPt-O-ADP	
	1941.51	235.60	1783.21	1705.91	12.53	OSF1.50	9270.00	7080.00				MinPt-O-ADP	
	1887.32	313.43	1677.19	1573.89	9.12	OSF1.50	10220.00	7080.00				MinPt-O-SF	
	1886.21	313.30	1676.15	1572.91	9.12	OSF1.50	10260.00	7080.00				MinPt-O-SF	
	1885.72	313.16	1675.75	1572.57	9.12	OSF1.50	10300.00	7080.00				MinPts	
	1985.69	313.11	1675.75	1572.59	9.12	OSF1.50	10310.00	7080.00				MinPt-CiCt	
	1947.28	378.42	1693.81	1568.86	7.78	OSF1.50	11330.00	7080.00				MinPt-CiCt	
	1867.27	468.89	1553.50	1398.38	6.01	OSF1.50	12590.00	7080.00				MinPt-O-SF	

Offset Trajectory	Separation			Allow Dev. (ft)	Sep. Fact.	Controlling Rule	Reference Trajectory		Risk Level			Alert	Status
	Ct-Ct (ft)	MAS (ft)	EOU (ft)				MD (ft)	TVD (ft)	Alert	Minor	Major		
	1864.43	467.63	1551.46	1396.80	6.02	OSF1.50	12660.00	7080.00				MinPt-O-ADP	
	1864.23	467.40	1551.42	1396.83	6.02	OSF1.50	12670.00	7080.00				MINPT-O-EQU	
	1863.98	466.64	1551.66	1397.34	6.03	OSF1.50	12700.00	7080.00				MinPt-CtCt	
	2655.86	308.15	2449.29	2347.71	13.06	OSF1.50	14592.67	7080.00				TD	
Coffer 36N-34HZ MWD 0' to 11687' - PR (Def Survey)													
	10910.57	91.48	10848.97	10819.08	182.48	OSF1.50	0.00	0.00				Surface	Pass
	10902.15	91.58	10840.50	10810.58	182.15	OSF1.50	13.00	13.00				WRP	
	9985.94	86.69	9927.46	9899.25	176.91	OSF1.50	1800.00	1777.76				MinPt-O-SF	
	9053.22	79.11	8998.82	8974.11	183.11	OSF1.50	5300.00	5222.42				MinPt-O-SF	
	2079.61	354.22	1841.14	1725.38	8.95	OSF1.50	14592.67	7080.00				MinPts	
Sparboe 7C-3HZ GYRO+MWD 0' to 14488' - PR (Def Survey)													
	9416.74	155.53	9312.45	9261.21	91.87	OSF1.50	0.00	0.00				Surface	Pass
	9406.72	155.62	9302.37	9251.10	91.72	OSF1.50	13.00	13.00				WRP	
	7593.54	140.55	7498.55	7452.98	83.30	OSF1.50	2960.00	2916.91				MinPt-O-SF	
	2222.58	441.89	1926.89	1780.68	7.59	OSF1.50	12790.00	7080.00				MinPt-O-SF	
	2216.21	440.01	1921.79	1776.20	7.60	OSF1.50	12900.00	7080.00				MinPt-O-SF	
	2203.41	436.00	1911.70	1767.41	7.62	OSF1.50	13150.00	7080.00				MinPt-O-SF	
	2186.76	429.64	1899.30	1757.11	7.68	OSF1.50	13540.00	7080.00				MinPt-O-SF	
	2178.65	428.62	1892.01	1750.03	7.66	OSF1.50	13860.00	7080.00				MinPts	
	2176.86	426.53	1891.61	1750.33	7.69	OSF1.50	14030.00	7080.00				MinPt-O-ADP	
	2175.80	425.37	1891.33	1750.43	7.71	OSF1.50	14170.00	7080.00				MinPt-O-ADP	
	2175.62	425.16	1891.30	1750.46	7.71	OSF1.50	14210.00	7080.00				MINPT-O-EQU	
	2174.65	424.12	1891.04	1750.53	7.73	OSF1.50	14370.00	7080.00				MinPt-CtCt	
	2174.66	424.20	1891.00	1750.46	7.73	OSF1.50	14390.00	7080.00				MinPts	
	2173.08	421.62	1891.09	1751.46	7.77	OSF1.50	14592.67	7080.00				MinPts	
HDI KF 10-3H MWD 0' to 15725' - PR (Def Survey)													
	5051.62	32.81	5049.75	5018.82	88681.22	MAS = 10.00 (m)	0.00	0.00				MinPts	Pass
	5051.63	32.81	5049.74	5018.82	60524.14	MAS = 10.00 (m)	13.00	13.00				WRP	
	5051.89	32.81	5049.30	5019.08	6442.40	MAS = 10.00 (m)	180.00	180.00				MinPt-O-SF	
	2304.85	124.87	2220.51	2179.98	28.39	OSF1.50	7070.00	6914.76				MinPt-O-SF	
	2293.66	135.02	2202.51	2158.64	26.10	OSF1.50	7410.00	7062.99				MinPt-CtCt	
	2293.99	136.00	2202.19	2157.99	25.91	OSF1.50	7460.00	7072.11				MINPT-O-EQU	
	2294.33	136.40	2202.26	2157.93	25.84	OSF1.50	7480.00	7074.79				MinPt-O-ADP	
	2297.47	142.24	2201.50	2155.23	24.79	OSF1.50	7590.00	7080.00				MINPT-O-EQU	
	2297.75	142.65	2201.51	2155.09	24.72	OSF1.50	7600.00	7080.00				MinPts	
	2261.67	209.52	2120.86	2052.15	16.43	OSF1.50	8680.00	7080.00				MinPt-CtCt	
	2261.89	210.08	2120.70	2051.80	16.39	OSF1.50	8720.00	7080.00				MINPT-O-EQU	
	2262.00	210.22	2120.72	2051.78	16.38	OSF1.50	8730.00	7080.00				MinPt-O-ADP	
	2270.71	225.77	2119.06	2044.94	15.30	OSF1.50	9010.00	7080.00				MINPT-O-EQU	
	2271.94	227.24	2119.30	2044.70	15.20	OSF1.50	9060.00	7080.00				MinPt-O-ADP	
	2253.88	312.38	2044.51	1941.51	10.92	OSF1.50	10320.00	7080.00				MinPt-CtCt	
	2254.20	313.33	2044.18	1940.87	10.89	OSF1.50	10370.00	7080.00				MINPT-O-EQU	
	2254.51	313.70	2044.23	1940.81	10.88	OSF1.50	10390.00	7080.00				MinPt-O-ADP	
	2247.21	417.71	1967.59	1829.50	8.12	OSF1.50	11980.00	7080.00				MinPt-CtCt	
	2248.92	422.56	1966.09	1826.42	8.04	OSF1.50	12120.00	7080.00				MINPT-O-EQU	
	2238.94	465.52	1927.47	1773.42	7.26	OSF1.50	12630.00	7080.00				MinPt-O-SF	
	2238.11	465.22	1926.83	1772.89	7.26	OSF1.50	12670.00	7080.00				MinPt-O-ADP	
	2238.02	465.12	1926.79	1772.89	7.26	OSF1.50	12680.00	7080.00				MINPT-O-EQU	
	2237.96	464.91	1926.87	1773.05	7.26	OSF1.50	12700.00	7080.00				MinPt-CtCt	
	2933.41	350.34	2698.69	2583.07	12.67	OSF1.50	14592.67	7080.00				TD	