



Crestone Peak Resources

Schlumberger

Plan 0

Borehole:	Well:	Field:	Structure:
Original Hole	Warner 2A-10H-E165	CO, Weld County (NAD 83 NZ) - 2019	Crestone Peak 10-1N-65W (Warner Pad)

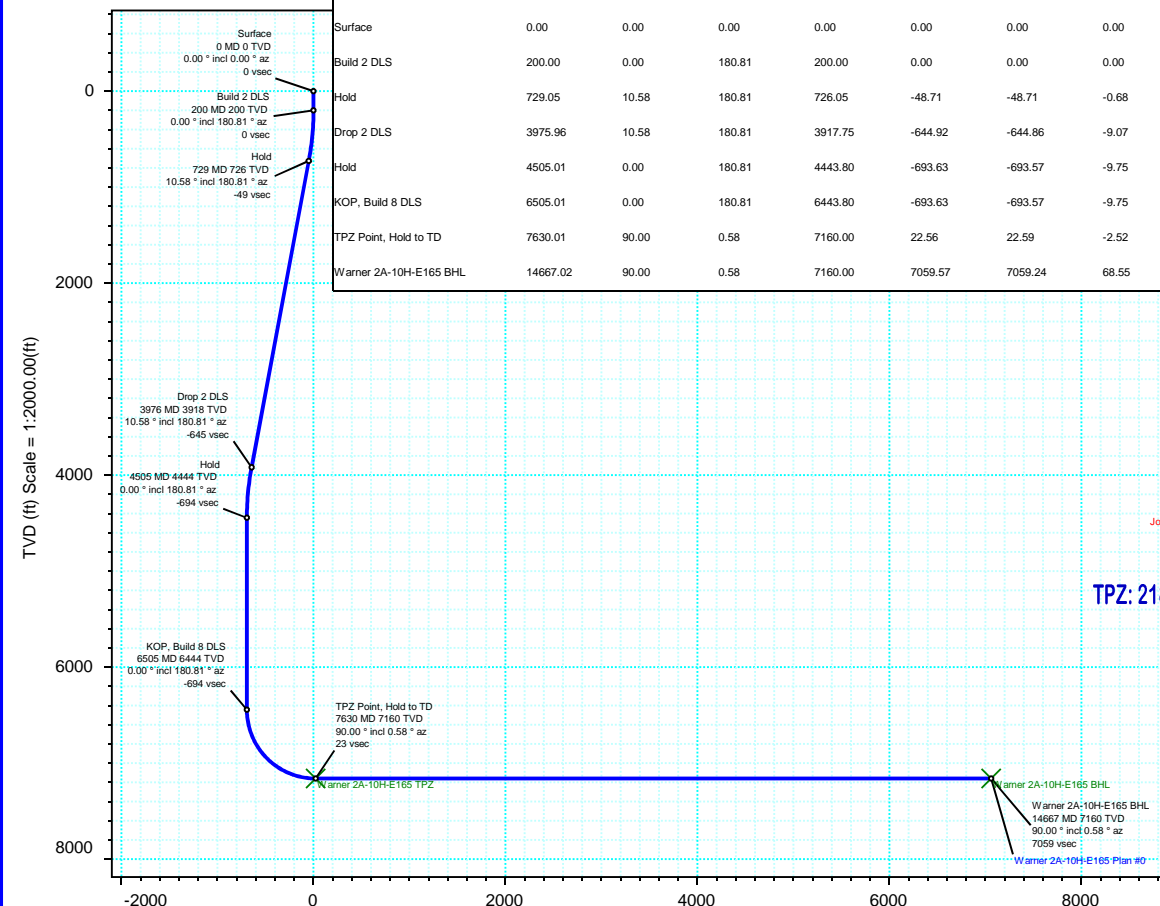
Gravity & Magnetic Parameters				Surface Location				Miscellaneous			
Model:	HDGM 2021	Dip:	66.328°	Date:	29-Jul-2021	Lat:	N 40 4 2.11	Northings:	1268463.11ftUS	Grid Conv:	0.5438°
MagDec:	7.93°	FS:	51748.543nT	Gravity FS:	998.998mgm (9.80665 Based)	Lon:	W 104 39 30.34	Easting:	3235533.66ftUS	Scale Fact:	0.99996195
								Plan: Warner 2A-10H-E165 Plan #0			

Proposal

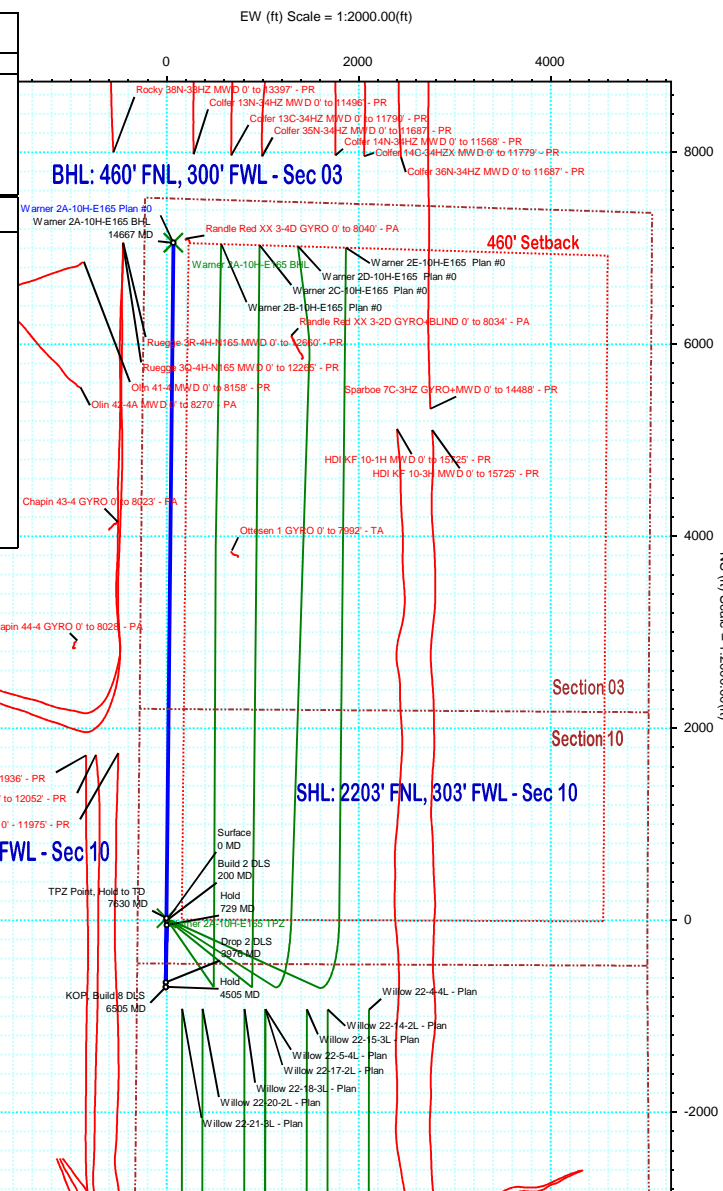


True North
Tot Corr (M->T 7.930°)
Mag Dec (7.930°)
Grid Conv (0.544°)

Surface Location									
Northing: 1268463.106383		Easting: 3235533.656620		Latitude: N 40 4 2.11		Longitude: W 104 39 30.34		VSec Azimuth: 0.56	
Target Description		Grid Coord					Local Coord		
Target Name	Latitude	Longitude	Northing	Easting	TVD	VSec	N(+)/S(-)	E(+)/W(-)	
Warner Pad Sec 10 - Mid	N 40 4 2.11	W 104 39 30.34	1268463.11	3235533.66	4984.00	0.00	0.00	0.00	
Warner Pad Sec 10-03 - 460' SB	N 40 4 2.11	W 104 39 30.34	1268463.11	3235533.66	4984.00	0.00	0.00	0.00	
Warner Pad Sec 10-03	N 40 4 2.11	W 104 39 30.34	1268463.11	3235533.66	4984.00	0.00	0.00	0.00	
Warner 2A-10H-E165 TPZ	N 40 4 2.33	W 104 39 30.37	1268465.67	3235530.92	7160.00	22.56	22.59	-2.52	
Warner 2A-10H-E165 BHL	N 40 5 11.87	W 104 39 29.46	1275522.40	3235535.21	7160.00	7059.57	7059.24	68.55	
Critical Points									
Critical Point	MD	INCL	AZIM	TVD	VSEC	N(+)/S(-)	E(+)/W(-)	DLS	
Surface	0.00	0.00	0.00	0.00	0.00	0.00	0.00		
Build 2 DLS	200.00	0.00	180.81	200.00	0.00	0.00	0.00	0.00	
Hold	729.05	10.58	180.81	726.05	-48.71	-48.71	-0.68	2.00	
Drop 2 DLS	3975.96	10.58	180.81	3917.75	-644.92	-644.86	-9.07	0.00	
Hold	4505.01	0.00	180.81	4443.80	-693.63	-693.57	-9.75	2.00	
KOP, Build 8 DLS	6505.01	0.00	180.81	6443.80	-693.63	-693.57	-9.75	0.00	
TPZ Point, Hold to TD	7630.01	90.00	0.58	7160.00	22.56	22.59	-2.52	8.00	
Warner 2A-10H-E165 BHL	14667.02	90.00	0.58	7160.00	7059.57	7059.24	68.55	0.00	



Vertical Section (ft) Azim = 0.06° Scale = 1:2000.00(ft) Origin = 0N/-S, 0E/-W



Warner 2A-10H-E165 Plan #0 Proposal Geodetic Report



(Def Plan)

Report Date: August 02, 2021 - 01:48 PM
Client: Crestone Peak Resources
Field: CO, Weld County (NAD 83 NZ) - 2019
Structure / Slot: Crestone Peak 10-1N-65W (Warner Pad) / Warner 2A-10H-E165
Well: Warner 2A-10H-E165
Borehole: Original Hole
UWI / API#: Unknown / Unknown
Survey Name: Warner 2A-10H-E165 Plan #0
Survey Date: July 29, 2021
Tort / AHD / DDI / ERD Ratio: 111.162 ° / 8446.845 ft / 6.284 / 1.180
Coordinate Reference System: NAD83 Colorado State Plane, Northern Zone, US Feet
Location Lat / Long: N 40° 4' 2.11080", W 104° 39' 30.33720"
Location Grid N/E Y/X: N 1268463.106 ftUS, E 3235533.657 ftUS
CRS Grid Convergence Angle: 0.5438 °
Grid Scale Factor: 0.99996195
Version / Patch: 2.10.826.8

Survey / DLS Computation: Minimum Curvature / Lubinski
Vertical Section Azimuth: 0.556 ° (True North)
Vertical Section Origin: 0.000 ft, 0.000 ft
TVD Reference Datum: LB 13ft
TVD Reference Elevation: 4984.000 ft above MSL
Seabed / Ground Elevation: 4971.000 ft above MSL
Magnetic Declination: 7.930 °
Total Gravity Field Strength: 998.9975mgn (9.80665 Based)
Gravity Model: GARM
Total Magnetic Field Strength: 51748.543 nT
Magnetic Dip Angle: 66.328 °
Declination Date: July 29, 2021
Magnetic Declination Model: HDGM 2021
North Reference: True North
Grid Convergence Used: 0.0000 °
Total Corr Mag North->True North: 7.9304 °
Local Coord Referenced To: Well Head

Comments	MD (ft)	Incl (°)	Azim True (°)	TVD (ft)	TVDSS (ft)	VSEC (ft)	NS (ft)	EW (ft)	DLS (ft/100ft)	Northing (ftUS)	Easting (ftUS)	Latitude (°)	Longitude (°)
Surface	0.00	0.00	0.00	0.00	-4984.00	0.00	0.00	0.00	N/A	1268463.11	3235533.66	40.067253	-104.658427
Build 2 DLS	100.00	0.00	180.81	100.00	-4884.00	0.00	0.00	0.00	0.00	1268463.11	3235533.66	40.067253	-104.658427
	200.00	0.00	180.81	200.00	-4784.00	0.00	0.00	0.00	0.00	1268463.11	3235533.66	40.067253	-104.658427
	300.00	2.00	180.81	299.98	-4684.02	-1.75	-1.74	-0.02	2.00	1268461.36	3235533.65	40.067248	-104.658427
	400.00	4.00	180.81	399.84	-4584.16	-6.98	-6.98	-0.10	2.00	1268456.13	3235533.62	40.067234	-104.658427
	500.00	6.00	180.81	499.45	-4484.55	-15.69	-15.69	-0.22	2.00	1268447.41	3235533.58	40.067210	-104.658428
	600.00	8.00	180.81	598.70	-4385.30	-27.88	-27.88	-0.39	2.00	1268435.23	3235533.53	40.067176	-104.658428
	700.00	10.00	180.81	697.47	-4286.53	-43.52	-43.52	-0.61	2.00	1268419.59	3235533.46	40.067134	-104.658429
Hold	729.05	10.58	180.81	726.05	-4257.95	-48.71	-48.71	-0.68	2.00	1268414.40	3235533.43	40.067119	-104.658429
	800.00	10.58	180.81	795.79	-4188.21	-61.74	-61.73	-0.87	0.00	1268401.37	3235533.37	40.067084	-104.658430
	900.00	10.58	180.81	894.09	-4089.91	-80.10	-80.09	-1.13	0.00	1268383.01	3235533.29	40.067033	-104.658431
	1000.00	10.58	180.81	992.39	-3991.61	-98.46	-98.46	-1.38	0.00	1268364.65	3235533.21	40.066983	-104.658432
	1100.00	10.58	180.81	1090.69	-3893.31	-116.83	-116.82	-1.64	0.00	1268346.28	3235533.12	40.066932	-104.658433
	1200.00	10.58	180.81	1188.99	-3795.01	-135.19	-135.18	-1.90	0.00	1268327.92	3235533.04	40.066882	-104.658434
	1300.00	10.58	180.81	1287.29	-3696.71	-153.55	-153.54	-2.16	0.00	1268309.56	3235532.96	40.066832	-104.658435
	1400.00	10.58	180.81	1385.59	-3598.41	-171.91	-171.90	-2.42	0.00	1268291.20	3235532.87	40.066781	-104.658436
	1500.00	10.58	180.81	1483.89	-3500.11	-190.28	-190.26	-2.67	0.00	1268272.84	3235532.79	40.066731	-104.658437
	1600.00	10.58	180.81	1582.19	-3401.81	-208.64	-208.62	-2.93	0.00	1268254.48	3235532.70	40.066680	-104.658437
	1700.00	10.58	180.81	1680.49	-3303.51	-227.00	-226.98	-3.19	0.00	1268236.12	3235532.62	40.066630	-104.658438
	1800.00	10.58	180.81	1778.79	-3205.21	-245.36	-245.34	-3.45	0.00	1268217.75	3235532.54	40.066580	-104.658439
	1900.00	10.58	180.81	1877.09	-3106.91	-263.73	-263.70	-3.71	0.00	1268199.39	3235532.45	40.066529	-104.658440
	2000.00	10.58	180.81	1975.39	-3008.61	-282.09	-282.06	-3.97	0.00	1268181.03	3235532.37	40.066479	-104.658441
	2100.00	10.58	180.81	2073.69	-2910.31	-300.45	-300.42	-4.22	0.00	1268162.67	3235532.28	40.066428	-104.658442
	2200.00	10.58	180.81	2171.99	-2812.01	-318.81	-318.78	-4.48	0.00	1268144.31	3235532.20	40.066378	-104.658443
	2300.00	10.58	180.81	2270.29	-2713.71	-337.17	-337.14	-4.74	0.00	1268125.95	3235532.12	40.066328	-104.658444
	2400.00	10.58	180.81	2368.59	-2615.41	-355.54	-355.51	-5.00	0.00	1268107.58	3235532.03	40.066277	-104.658445
	2500.00	10.58	180.81	2466.89	-2517.11	-373.90	-373.87	-5.26	0.00	1268089.22	3235531.95	40.066227	-104.658446
	2600.00	10.58	180.81	2565.19	-2418.81	-392.26	-392.23	-5.51	0.00	1268070.86	3235531.87	40.066176	-104.658447
2700.00	10.58	180.81	2663.48	-2320.52	-410.62	-410.59	-5.77	0.00	1268052.50	3235531.78	40.066126	-104.658448	
2800.00	10.58	180.81	2761.78	-2222.22	-428.99	-428.95	-6.03	0.00	1268034.14	3235531.70	40.066076	-104.658449	
2900.00	10.58	180.81	2860.08	-2123.92	-447.35	-447.31	-6.29	0.00	1268015.78	3235531.61	40.066025	-104.658450	
3000.00	10.58	180.81	2958.38	-2025.62	-465.71	-465.67	-6.55	0.00	1267997.41	3235531.53	40.065975	-104.658451	
3100.00	10.58	180.81	3056.68	-1927.32	-484.07	-484.03	-6.80	0.00	1267979.05	3235531.45	40.065924	-104.658451	
3200.00	10.58	180.81	3154.98	-1829.02	-502.44	-502.39	-7.06	0.00	1267960.69	3235531.36	40.065874	-104.658452	
3300.00	10.58	180.81	3253.28	-1730.72	-520.80	-520.75	-7.32	0.00	1267942.33	3235531.28	40.065824	-104.658453	
3400.00	10.58	180.81	3351.58	-1632.42	-539.16	-539.11	-7.58	0.00	1267923.97	3235531.19	40.065773	-104.658454	
3500.00	10.58	180.81	3449.88	-1534.12	-557.52	-557.47	-7.84	0.00	1267905.61	3235531.11	40.065723	-104.658455	
3600.00	10.58	180.81	3548.18	-1435.82	-575.88	-575.83	-8.09	0.00	1267887.25	3235531.03	40.065672	-104.658456	
3700.00	10.58	180.81	3646.48	-1337.52	-594.25	-594.19	-8.35	0.00	1267868.88	3235530.94	40.065622	-104.658457	
3800.00	10.58	180.81	3744.78	-1239.22	-612.61	-612.55	-8.61	0.00	1267850.52	3235530.86	40.065572	-104.658458	
3900.00	10.58	180.81	3843.08	-1140.92	-630.97	-630.92	-8.87	0.00	1267832.16	3235530.78	40.065521	-104.658459	
Drop 2 DLS	3975.96	10.58	180.81	3917.75	-1066.25	-644.92	-644.86	-9.07	0.00	1267813.81	3235530.71	40.065483	-104.658459
	4000.00	10.10	180.81	3941.40	-1042.60	-649.23	-649.18	-9.13	2.00	1267813.90	3235530.69	40.065471	-104.658460
	4100.00	8.10	180.81	4040.13	-943.87	-665.05	-664.99	-9.35	2.00	1267798.08	3235530.62	40.065428	-104.658460
	4200.00	6.10	180.81	4139.36	-844.64	-677.41	-677.35	-9.52	2.00	1267785.72	3235530.56	40.065394	-104.658461
	4300.00	4.10	180.81	4238.96	-745.04	-686.30	-686.24	-9.65	2.00	1267776.84	3235530.52	40.065369	-104.658461
	4400.00	2.10	180.81	4338.81	-645.19	-691.71	-691.65	-9.72	2.00	1267771.43	3235530.50	40.065354	-104.658462
	4500.00	0.10	180.81	4438.79	-545.21	-693.63	-693.57	-9.75	2.00	1267769.51	3235530.49	40.065349	-104.658462
Hold	4505.01	0.00	180.81	4443.80	-540.20	-693.63	-693.57	-9.75	2.00	1267769.50	3235530.49	40.065349	-104.658462
	4600.00	0.00	180.81	4538.79	-445.21	-693.63	-693.57	-9.75	0.00	1267769.50	3235530.49	40.065349	-104.658462
	4700.00	0.00	180.81	4638.79	-345.21	-693.63	-693.57	-9.75	0.00	1267769.50	3235530.49	40.065349	-104.658462
	4800.00	0.00	180.81	4738.79	-245.21	-693.63	-693.57	-9.75	0.00	1267769.50	3235530.49	40.065349	-104.658462
	4900.00	0.00	180.81	4838.79	-145.21	-693.63	-693.57	-9.75	0.00	1267769.50	3235530.49	40.065349	-104.658462
	5000.00	0.00	180.81	4938.79	-45.21	-693.63	-693.57	-9.75	0.00	1267769.50	3235530.49	40.065349	-104.658462
	5100.00	0.00	180.81	5038.79	54.79	-693.63	-693.57	-9.75	0.00	1267769.50	3235530.49	40.065349	-104.658462
	5200.00	0.00	180.81	5138.79	154.79	-693.63	-693.57	-9.75	0.00	1267769.50	3235530.49	40.065349	-104.658462
	5300.00	0.00	180.81	5238.79	254.79	-693.63	-693.57	-9.75	0.00	1267769.50	3235530.49	40.065349	-104.658462
	5400.00	0.00	180.81	5338.79	354.79	-693.63	-693.57	-9.75	0.00	1267769.50	3235530.49	40.065349	-104.658462
	5500.00	0.00	180.81	5438.79	454.79	-693.63	-693.57	-9.75	0.00	1267769.50	3235530.49	40.065349	-104.658462
	5600.00	0.00	180.81	5538.79	554.79	-693.63	-693.57	-9.75	0.00	1267769.50	3235530.49	40.065349	-104.658462
	5700.00	0.00	180.81	5638.79	654.79	-693.63	-693.57	-9.75	0.00	1267769.50	3235530.49	40.065349	-104.658462
	5800.00	0.00	180.81	5738.79	754.79	-693.63	-693.57	-9.75	0.00	1267769.50	3235530.49	40.065349	-104.658462
	5900.00	0.00	180.81	5838.79	854.79	-693.63	-693.57	-9.75	0.00	1267769.50	3235530.49	40.065349	-104.658462
	6000.00	0.00	180.81	5938.79	954.79	-693.63	-693.57	-9.75	0.00	1267769.50	3235530.49	40.065349	-104.658462
	6100.00	0.00	180.81	6038.79	1054.79	-693.63	-693.57	-9.75	0.00	1267769.50	3235530.49	40.065349	-104.658462
	6200.00	0.00	180.81	6138.79	1154.79	-693.63	-693.57	-9.75	0.00	1267769.50	3235530.49	40.065349	-104.658462
	6300.00	0.00	180.81	6238.79	1254.79	-693.63	-693.57	-9.75	0.00	1267769.50	3235530.49	40.065349	-104.658462
	6400.00	0.00	180.81	6338.79	1354.79	-693.63	-693.57	-9.75	0.00	1267769.50	3235530.49	40.065349	-104.658462
6500.00	0.00	180.81	6438.79	1454.79	-693.63	-693.57	-9.75	0.00	1267769.50	3235530.49	40.065349	-104.658462	
KOP, Build 8 DLS	6505.01	0.00	180.81	6443.80	1459.80	-693.63	-693.57	-9.75	0.00	1267769.50	3235530.49	40.065349	-104.658462
	6600.00	7.60	0.58	6538.51	1554.51	-687.34	-687.28	-9.69	8.00	1267775.79	3235530.49	40.065366	-104.658462
	6700.00	15.60	0.58	6636.39	1652.39	-667.25	-667.19	-9.48	8.00	1267795.88	3235530.51	40.065422	-104.658461
	6800.00	23.60	0.58	6730.52	1746.52	-633.74	-633.68	-9.15	8.00				

Comments	MD (ft)	Incl (°)	Azim True (°)	TVD (ft)	TVDSS (ft)	VSEC (ft)	NS (ft)	EW (ft)	DLS (°/100ft)	Northing (ftUS)	Easting (ftUS)	Latitude (°)	Longitude (°)
	8100.00	90.00	0.58	7160.00	2176.00	492.55	492.55	2.23	0.00	1268955.64	3235531.21	40.068605	-104.658419
	8200.00	90.00	0.58	7160.00	2176.00	592.55	592.55	3.24	0.00	1269055.64	3235531.27	40.068880	-104.658415
	8300.00	90.00	0.58	7160.00	2176.00	692.55	692.54	4.25	0.00	1269155.63	3235531.33	40.069154	-104.658412
	8400.00	90.00	0.58	7160.00	2176.00	792.55	792.54	5.26	0.00	1269255.63	3235531.39	40.069429	-104.658408
	8500.00	90.00	0.58	7160.00	2176.00	892.55	892.53	6.27	0.00	1269355.62	3235531.46	40.069703	-104.658405
	8600.00	90.00	0.58	7160.00	2176.00	992.55	992.53	7.28	0.00	1269455.62	3235531.52	40.069978	-104.658401
	8700.00	90.00	0.58	7160.00	2176.00	1092.55	1092.52	8.29	0.00	1269555.61	3235531.58	40.070252	-104.658397
	8800.00	90.00	0.58	7160.00	2176.00	1192.55	1192.52	9.30	0.00	1269655.61	3235531.64	40.070527	-104.658394
	8900.00	90.00	0.58	7160.00	2176.00	1292.55	1292.51	10.31	0.00	1269755.61	3235531.70	40.070801	-104.658390
	9000.00	90.00	0.58	7160.00	2176.00	1392.55	1392.51	11.32	0.00	1269855.60	3235531.76	40.071076	-104.658387
	9100.00	90.00	0.58	7160.00	2176.00	1492.55	1492.50	12.33	0.00	1269955.60	3235531.82	40.071350	-104.658383
	9200.00	90.00	0.58	7160.00	2176.00	1592.55	1592.50	13.34	0.00	1270055.59	3235531.88	40.071624	-104.658379
	9300.00	90.00	0.58	7160.00	2176.00	1692.55	1692.49	14.35	0.00	1270155.59	3235531.94	40.071899	-104.658376
	9400.00	90.00	0.58	7160.00	2176.00	1792.55	1792.49	15.36	0.00	1270255.59	3235532.00	40.072173	-104.658372
	9500.00	90.00	0.58	7160.00	2176.00	1892.55	1892.48	16.37	0.00	1270355.58	3235532.06	40.072448	-104.658369
	9600.00	90.00	0.58	7160.00	2176.00	1992.55	1992.48	17.38	0.00	1270455.58	3235532.13	40.072722	-104.658365
	9700.00	90.00	0.58	7160.00	2176.00	2092.55	2092.47	18.39	0.00	1270555.57	3235532.19	40.072997	-104.658361
	9800.00	90.00	0.58	7160.00	2176.00	2192.55	2192.47	19.40	0.00	1270655.57	3235532.25	40.073271	-104.658358
	9900.00	90.00	0.58	7160.00	2176.00	2292.55	2292.46	20.41	0.00	1270755.57	3235532.31	40.073546	-104.658354
	10000.00	90.00	0.58	7160.00	2176.00	2392.55	2392.46	21.42	0.00	1270855.56	3235532.37	40.073820	-104.658350
	10100.00	90.00	0.58	7160.00	2176.00	2492.55	2492.45	22.43	0.00	1270955.56	3235532.43	40.074095	-104.658347
	10200.00	90.00	0.58	7160.00	2176.00	2592.55	2592.45	23.44	0.00	1271055.55	3235532.49	40.074369	-104.658343
	10300.00	90.00	0.58	7160.00	2176.00	2692.55	2692.44	24.45	0.00	1271155.55	3235532.55	40.074644	-104.658340
	10400.00	90.00	0.58	7160.00	2176.00	2792.55	2792.44	25.46	0.00	1271255.55	3235532.61	40.074918	-104.658336
	10500.00	90.00	0.58	7160.00	2176.00	2892.55	2892.43	26.47	0.00	1271355.54	3235532.67	40.075193	-104.658332
	10600.00	90.00	0.58	7160.00	2176.00	2992.55	2992.43	27.48	0.00	1271455.54	3235532.73	40.075467	-104.658329
	10700.00	90.00	0.58	7160.00	2176.00	3092.55	3092.42	28.49	0.00	1271555.53	3235532.80	40.075742	-104.658325
	10800.00	90.00	0.58	7160.00	2176.00	3192.55	3192.42	29.50	0.00	1271655.53	3235532.86	40.076016	-104.658322
	10900.00	90.00	0.58	7160.00	2176.00	3292.55	3292.41	30.51	0.00	1271755.53	3235532.92	40.076291	-104.658318
	11000.00	90.00	0.58	7160.00	2176.00	3392.55	3392.41	31.52	0.00	1271855.52	3235532.98	40.076565	-104.658314
	11100.00	90.00	0.58	7160.00	2176.00	3492.55	3492.40	32.53	0.00	1271955.52	3235533.04	40.076840	-104.658311
	11200.00	90.00	0.58	7160.00	2176.00	3592.55	3592.40	33.54	0.00	1272055.51	3235533.10	40.077114	-104.658307
	11300.00	90.00	0.58	7160.00	2176.00	3692.55	3692.39	34.55	0.00	1272155.51	3235533.16	40.077389	-104.658304
	11400.00	90.00	0.58	7160.00	2176.00	3792.55	3792.39	35.56	0.00	1272255.51	3235533.22	40.077663	-104.658300
	11500.00	90.00	0.58	7160.00	2176.00	3892.55	3892.38	36.57	0.00	1272355.50	3235533.28	40.077938	-104.658296
	11600.00	90.00	0.58	7160.00	2176.00	3992.55	3992.37	37.58	0.00	1272455.50	3235533.34	40.078212	-104.658293
	11700.00	90.00	0.58	7160.00	2176.00	4092.55	4092.37	38.59	0.00	1272555.49	3235533.40	40.078487	-104.658289
	11800.00	90.00	0.58	7160.00	2176.00	4192.55	4192.36	39.60	0.00	1272655.49	3235533.47	40.078761	-104.658285
	11900.00	90.00	0.58	7160.00	2176.00	4292.55	4292.36	40.61	0.00	1272755.49	3235533.53	40.079036	-104.658282
	12000.00	90.00	0.58	7160.00	2176.00	4392.55	4392.35	41.62	0.00	1272855.48	3235533.59	40.079310	-104.658278
	12100.00	90.00	0.58	7160.00	2176.00	4492.55	4492.35	42.63	0.00	1272955.48	3235533.65	40.079585	-104.658275
	12200.00	90.00	0.58	7160.00	2176.00	4592.55	4592.34	43.64	0.00	1273055.47	3235533.71	40.079859	-104.658271
	12300.00	90.00	0.58	7160.00	2176.00	4692.55	4692.34	44.65	0.00	1273155.47	3235533.77	40.080134	-104.658267
	12400.00	90.00	0.58	7160.00	2176.00	4792.55	4792.33	45.66	0.00	1273255.47	3235533.83	40.080408	-104.658264
	12500.00	90.00	0.58	7160.00	2176.00	4892.55	4892.33	46.67	0.00	1273355.46	3235533.89	40.080683	-104.658260
	12600.00	90.00	0.58	7160.00	2176.00	4992.55	4992.32	47.68	0.00	1273455.46	3235533.95	40.080957	-104.658257
	12700.00	90.00	0.58	7160.00	2176.00	5092.55	5092.32	48.69	0.00	1273555.45	3235534.01	40.081232	-104.658253
	12800.00	90.00	0.58	7160.00	2176.00	5192.55	5192.31	49.70	0.00	1273655.45	3235534.07	40.081506	-104.658249
	12900.00	90.00	0.58	7160.00	2176.00	5292.55	5292.31	50.71	0.00	1273755.45	3235534.14	40.081781	-104.658246
	13000.00	90.00	0.58	7160.00	2176.00	5392.55	5392.30	51.72	0.00	1273855.44	3235534.20	40.082055	-104.658242
	13100.00	90.00	0.58	7160.00	2176.00	5492.55	5492.30	52.73	0.00	1273955.44	3235534.26	40.082330	-104.658239
	13200.00	90.00	0.58	7160.00	2176.00	5592.55	5592.29	53.74	0.00	1274055.43	3235534.32	40.082604	-104.658235
	13300.00	90.00	0.58	7160.00	2176.00	5692.55	5692.29	54.75	0.00	1274155.43	3235534.38	40.082879	-104.658231
	13400.00	90.00	0.58	7160.00	2176.00	5792.55	5792.28	55.76	0.00	1274255.43	3235534.44	40.083153	-104.658228
	13500.00	90.00	0.58	7160.00	2176.00	5892.55	5892.28	56.77	0.00	1274355.42	3235534.50	40.083428	-104.658224
	13600.00	90.00	0.58	7160.00	2176.00	5992.55	5992.27	57.78	0.00	1274455.42	3235534.56	40.083702	-104.658221
	13700.00	90.00	0.58	7160.00	2176.00	6092.55	6092.27	58.79	0.00	1274555.41	3235534.62	40.083977	-104.658217
	13800.00	90.00	0.58	7160.00	2176.00	6192.55	6192.26	59.80	0.00	1274655.41	3235534.68	40.084251	-104.658213
	13900.00	90.00	0.58	7160.00	2176.00	6292.55	6292.26	60.81	0.00	1274755.41	3235534.74	40.084526	-104.658210
	14000.00	90.00	0.58	7160.00	2176.00	6392.55	6392.25	61.82	0.00	1274855.40	3235534.81	40.084800	-104.658206
	14100.00	90.00	0.58	7160.00	2176.00	6492.55	6492.25	62.83	0.00	1274955.40	3235534.87	40.085075	-104.658202
	14200.00	90.00	0.58	7160.00	2176.00	6592.55	6592.24	63.84	0.00	1275055.39	3235534.93	40.085349	-104.658199
	14300.00	90.00	0.58	7160.00	2176.00	6692.55	6692.24	64.85	0.00	1275155.39	3235534.99	40.085624	-104.658195
	14400.00	90.00	0.58	7160.00	2176.00	6792.55	6792.23	65.86	0.00	1275255.39	3235535.05	40.085898	-104.658192
	14500.00	90.00	0.58	7160.00	2176.00	6892.55	6892.23	66.87	0.00	1275355.38	3235535.11	40.086173	-104.658188
	14600.00	90.00	0.58	7160.00	2176.00	6992.55	6992.22	67.88	0.00	1275455.38	3235535.17	40.086447	-104.658184
Warner 2A-10H-E165 BHL	14667.02	90.00	0.58	7160.00	2176.00	7059.57	7059.24	68.55	0.00	1275522.40	3235535.21	40.086631	-104.658182

Survey Type: Def Plan

Survey Error Model: ISCWSA Rev 0 *** 3-D 95.000% Confidence 2.7955 sigma
Survey Program:

Description	Part	MD From (ft)	MD To (ft)	EOU Freq (ft)	Hole Size (in)	Casing Diameter (in)	Expected Max Inclination (deg)	Survey Tool Type	Borehole / Survey
	1	0.000	13.000	1/100.000	13.500	9.625		NAL_MWD_PLUS_0.5_DEG- Depth Only	Original Hole / Warner 2A-10H-E165 Plan #0
	1	13.000	1800.000	1/100.000	13.500	9.625		NAL_MWD_PLUS_0.5_DEG	Original Hole / Warner 2A-10H-E165 Plan #0
	1	1800.000	14667.023	1/100.000	8.500	5.500		NAL_MWD_PLUS_0.5_DEG	Original Hole / Warner 2A-10H-E165 Plan #0

Warner 2A-10H-E165 Plan #0 Anti-Collision Summary Report

Analysis Date-24hr Time: August 02, 2021 - 13:50
Client: Crestone Peak Resources
Field: CO, Weld County (NAD 83 NZ) - 2019
Structure: Crestone Peak 10-1N-65W (Warner Pad)
Slot: Warner 2A-10H-E165
Well: Warner 2A-10H-E165
Borehole: Original Hole
Scan MD Range: 0.00ft - 14667.02ft

Analysis Method: 3D Least Distance
Reference Trajectory: Warner 2A-10H-E165 Plan #0 (Def Plan)
Depth Interval: Every 10.00 Measured Depth (ft)
Rule Set: NAL Procedure: D&M AntiCollision Standard S002
Min Pts: All local minima indicated.
Version / Patch: 2.10.826.8
Database \ Project: localhost\drilling-Colorado

Trajectory Error Model: ICSWSA0 3-D 95.000% Confidence 2.7955 sigma, for subject well. For offset wells, error model version is specified with each well respectively.

Offset Trajectories Summary

Offset Selection Criteria

Wellhead distance scan: Not performed!
 Selection filters: Definitive Surveys - Definitive Plans - Definitive surveys exclude definitive plans
 - All Non-Def Surveys when no Def-Survey is set in a borehole - All Non-Def Plans when no Def-Plan is set in a borehole

Offset Trajectory	Separation			Allow Dev. (ft)	Sep. Fact.	Controlling Rule	Reference Trajectory		Risk Level			Alert	Status
	Ct-Ct (ft)	MAS (ft)	EOU (ft)				MD (ft)	TVD (ft)	Alert	Minor	Major		

Results highlighted: Sep-Factor separation <= 1.50 ft

Randle Red XX 3-4D GYRO 0' to 8040' - PA (Def Survey)

	7061.90	32.81	7060.09	7029.09	N/A	MAS = 10.00 (m)	0.00	0.00					Fail Major
	7061.87	32.81	7060.04	7029.06	844806.83	MAS = 10.00 (m)	13.00	13.00					Surface
	7061.77	32.81	7059.31	7028.96	10895.13	MAS = 10.00 (m)	190.00	190.00					WRP
	7061.77	32.81	7059.27	7028.96	10189.46	MAS = 10.00 (m)	200.00	200.00					MinPts
	7063.51	32.81	7060.98	7030.70	9863.48	MAS = 10.00 (m)	300.00	299.98					MINPT-O-EQU
	7356.58	32.81	7347.13	7323.77	937.92	MAS = 10.00 (m)	2090.00	2063.86					MinPt-O-SF
	7744.33	32.81	7729.22	7711.52	573.21	MAS = 10.00 (m)	4000.00	3941.40					MinPt-O-SF
	7770.49	32.81	7755.59	7737.68	584.46	MAS = 10.00 (m)	4170.00	4109.55					MinPt-O-SF
	7793.11	32.81	7778.76	7760.30	611.07	MAS = 10.00 (m)	4600.00	4538.79					MinPt-O-SF
	7785.80	32.81	7774.35	7752.99	791.23	MAS = 10.00 (m)	5820.00	5758.79					MINPT-O-EQU
	7785.79	32.81	7774.36	7752.98	792.56	MAS = 10.00 (m)	5840.00	5778.79					MinPts
	7786.36	32.81	7774.95	7753.56	793.41	MAS = 10.00 (m)	6090.00	6028.79					MinPt-O-SF
	7772.74	32.81	7761.39	7739.93	797.64	MAS = 10.00 (m)	6600.00	6538.51					MinPt-O-SF
	7752.48	32.81	7741.16	7719.68	797.50	MAS = 10.00 (m)	6700.00	6636.39					MinPt-O-SF
	343.70	113.30	265.45	230.40	4.79	OSF1.50	14380.00	7160.00	OSF<5.00				Enter Alert
	194.11	196.01	61.03	-1.91	1.48	OSF1.50	14550.00	7160.00		OSF<1.50			Enter Minor
	158.15	239.25	-3.43	-81.10	0.98	OSF1.50	14600.00	7160.00			OSF<1.00		Enter Major
	126.00	298.51	-74.21	-172.51	0.62	OSF1.50	14667.02	7160.00					MinPts

Warner 2B-10H-E165 Plan #0 (Def Plan)

	9.80	8.04	8.82	1.77	N/A	MAS = 2.45 (m)	0.00	0.00					Warning Alert
	9.80	8.04	8.82	1.77	N/A	MAS = 2.45 (m)	13.00	13.00					Enter Alert
	9.80	8.04	7.92	1.77	9.78	MAS = 2.45 (m)	200.00	200.00					WRP
	9.84	8.04	7.95	1.81	9.79	MAS = 2.45 (m)	220.00	220.00					MinPts
	49.15	8.04	44.52	41.12	13.20	MAS = 2.45 (m)	820.00	815.45					MinPt-O-SF
	159.73	20.53	145.71	139.20	12.18	OSF1.50	1800.00	1778.79					Exit Alert
	405.30	44.09	375.57	361.20	14.07	OSF1.50	3975.96	3917.75					MinPt-O-SF
	499.90	44.48	469.91	455.42	17.20	OSF1.50	6470.00	6408.79					MinPt-O-SF
	489.29	147.76	390.46	341.53	4.99	OSF1.50	9890.00	7160.00	OSF<5.00				MinPt-CtCt
	480.30	241.31	319.09	238.99	2.99	OSF1.50	11480.00	7160.00					Enter Alert
	506.31	430.40	219.05	75.91	1.77	OSF1.50	14667.02	7160.00					MinPt-CtCt
													MinPts

Warner 2C-10H-E165 Plan #0 (Def Plan)

	19.88	16.09	18.89	3.78	N/A	MAS = 4.91 (m)	0.00	0.00					Warning Alert
	19.88	16.09	18.89	3.78	N/A	MAS = 4.91 (m)	13.00	13.00					Enter Alert
	19.88	16.09	17.99	3.78	20.95	MAS = 4.91 (m)	200.00	200.00					WRP
	20.55	16.09	18.60	4.45	20.34	MAS = 4.91 (m)	270.00	269.99					MinPts
	48.01	16.09	44.87	31.92	21.84	MAS = 4.91 (m)	640.00	638.27					MinPt-O-SF
	236.15	20.18	222.37	215.97	18.38	OSF1.50	1800.00	1778.79					Exit Alert
	592.89	42.71	564.08	550.18	21.28	OSF1.50	3975.96	3917.75					MinPt-O-SF
	899.89	52.01	864.89	847.88	26.43	OSF1.50	6570.00	6508.70					MinPt-O-SF
	910.29	35.45	886.33	874.84	39.57	OSF1.50	7520.00	7151.56					MinPt-CtCt
	910.48	274.32	727.27	636.16	4.99	OSF1.50	12060.00	7160.00	OSF<5.00				MinPt-O-SF
	910.38	427.93	624.74	482.43	3.19	OSF1.50	14650.00	7160.00					Enter Alert
	910.52	428.76	624.34	481.74	3.19	OSF1.50	14667.02	7160.00					MinPt-CtCt
													MinPts

Warner 2D-10H-E165 Plan #0 (Def Plan)

	29.95	24.15	28.97	5.80	N/A	MAS = 7.36 (m)	0.00	0.00					Warning Alert
	29.95	24.15	28.97	5.80	N/A	MAS = 7.36 (m)	13.00	13.00					Enter Alert
	29.95	24.15	28.06	5.80	32.12	MAS = 7.36 (m)	200.00	200.00					WRP
	31.44	24.15	29.45	7.26	30.22	MAS = 7.36 (m)	300.00	299.98					MinPts
	49.05	24.15	46.50	24.89	30.83	MAS = 7.36 (m)	550.00	549.13					MinPt-O-SF
	283.68	24.15	269.80	259.53	21.91	MAS = 7.36 (m)	1800.00	1778.79					Exit Alert
	710.84	43.15	681.74	667.69	25.25	OSF1.50	3975.96	3917.75					MinPt-O-SF
	1296.41	44.37	1266.50	1252.04	44.79	OSF1.50	7570.00	7157.48					MinPt-O-SF
	1343.25	403.68	1073.80	939.57	5.00	OSF1.50	14230.00	7160.00	OSF<5.00				Enter Alert
	1299.47	431.21	1011.67	868.26	4.53	OSF1.50	14640.00	7160.00					MinPt-CtCt
	1299.71	432.64	1010.95	867.06	4.51	OSF1.50	14667.02	7160.00					MinPts

Warner 2E-10H-E165 Plan #0 (Def Plan)

	40.03	32.21	39.04	7.81	N/A	MAS = 9.82 (m)	0.00	0.00					Warning Alert
	40.03	32.21	39.04	7.81	N/A	MAS = 9.82 (m)	13.00	13.00					Enter Alert
	40.03	32.21	38.14	7.81	43.30	MAS = 9.82 (m)	200.00	200.00					WRP
	41.62	32.21	39.61	9.41	39.39	MAS = 9.82 (m)	300.00	299.98					MinPts
	48.70	32.21	46.65	16.49	44.81	MAS = 9.82 (m)	430.00	429.75					MinPt-O-SF
	146.88	32.21	140.61	114.67	27.58	MAS = 9.82 (m)	990.00	982.56					Exit Alert
	226.61	32.21	217.48	194.40	27.70	MAS = 9.82 (m)	1290.00	1277.46					MinPt-O-SF
	363.40	32.21	349.30	331.18	27.64	MAS = 9.82 (m)	1800.00	1778.79					MinPt-O-SF
	947.84	44.18	918.06	903.66	32.89	OSF1.50	3975.96	3917.75					MinPt-O-SF
	1801.11	432.75	1512.29	1368.37	6.25	OSF1.50	14630.00	7160.00					MinPt-CtCt
	1801.44	434.72	1511.29	1366.71	6.23	OSF1.50	14667.02	7160.00					MinPts

Ruegge 3R-4H-N165 MWD 0' to 12660' - PR (Def Survey)

													Warning Alert
--	--	--	--	--	--	--	--	--	--	--	--	--	---------------

Offset Trajectory	Separation			Allow Dev. (ft)	Sep. Fact.	Controlling Rule	Reference Trajectory		Risk Level			Alert	Status	
	Ct-Ct (ft)	MAS (ft)	EOU (ft)				MD (ft)	TVD (ft)	Alert	Minor	Major			
Joker 26N2-9HZ MWD 0' - 11975' - PR (Def Survey)	4411.05	32.81	4399.25	4378.24	441.42	MAS = 10.00 (m)	0.00	0.00				Surface		
	4405.55	32.81	4393.54	4372.74	431.65	MAS = 10.00 (m)	13.00	13.00				WRP		
	524.19	144.57	426.28	379.61	5.57	OSF1.50	10370.00	7160.00				MinPt-CtCt		
	524.81	146.72	425.50	378.09	5.49	OSF1.50	10420.00	7160.00				MINPT-O-EOU		
	525.79	147.97	425.66	377.82	5.45	OSF1.50	10450.00	7160.00				MinPt-O-ADP		
	552.60	169.10	438.37	383.50	4.99	OSF1.50	10940.00	7160.00	OSF<5.00			Enter Alert		
	527.16	244.80	362.45	282.36	3.26	OSF1.50	12360.00	7160.00				MinPt-CtCt		
	538.93	275.55	353.77	263.39	2.96	OSF1.50	12910.00	7160.00				MINPT-O-EOU		
	540.68	285.19	349.05	255.49	2.87	OSF1.50	13020.00	7160.00				MinPt-CtCt		
	534.88	325.25	316.53	209.63	2.48	OSF1.50	13650.00	7160.00				MinPt-CtCt		
	531.78	390.86	269.67	140.92	2.05	OSF1.50	14650.00	7160.00				MinPts		
	531.65	390.47	269.81	141.18	2.05	OSF1.50	14660.00	7160.00				MinPt-CtCt		
	531.67	389.68	270.36	141.98	2.05	OSF1.50	14667.02	7160.00				TD		
	Warning Alert													
	2709.91	32.81	2708.10	2677.10	N/A	MAS = 10.00 (m)	0.00	0.00				Surface		
2709.90	32.81	2708.08	2677.10	374233.57	MAS = 10.00 (m)	13.00	13.00				WRP			
2535.56	32.81	2516.58	2502.75	146.12	MAS = 10.00 (m)	3000.00	2958.38				MinPts			
2535.61	32.81	2516.50	2502.80	145.06	MAS = 10.00 (m)	3030.00	2987.87				MINPT-O-EOU			
2535.72	32.81	2515.60	2502.91	137.10	MAS = 10.00 (m)	3180.00	3135.32				MinPts			
2533.07	32.81	2511.13	2500.26	124.74	MAS = 10.00 (m)	3450.00	3400.73				MinPts			
2533.09	32.81	2511.12	2500.28	124.50	MAS = 10.00 (m)	3460.00	3410.56				MINPT-O-EOU			
2536.47	35.18	2512.47	2501.29	113.33	OSF1.50	3750.00	3695.63				MINPT-O-EOU			
2536.70	35.45	2512.52	2501.25	112.42	OSF1.50	3780.00	3725.12				MinPt-O-ADP			
2536.04	37.94	2510.20	2498.09	104.69	OSF1.50	3980.00	3921.72				MinPt-CtCt			
2536.06	38.00	2510.18	2498.06	104.52	OSF1.50	3990.00	3931.56				MinPts			
532.11	124.35	448.53	407.76	6.50	OSF1.50	7250.00	7061.52				MinPt-CtCt			
532.77	126.10	448.03	406.67	6.42	OSF1.50	7300.00	7085.30				MINPT-O-EOU			
533.67	127.15	448.23	406.53	6.37	OSF1.50	7330.00	7098.07				MinPt-O-ADP			
537.55	162.85	428.33	374.70	4.99	OSF1.50	8010.00	7160.00	OSF<5.00			Enter Alert			
535.76	178.24	416.29	357.53	4.54	OSF1.50	8290.00	7160.00				MinPt-CtCt			
524.31	241.35	362.76	282.96	3.27	OSF1.50	9340.00	7160.00				MinPts			
634.02	193.12	504.26	440.90	4.98	OSF1.50	9700.00	7160.00	OSF>5.00			Exit Alert			
5349.26	41.89	5320.80	5307.37	199.11	OSF1.50	14667.02	7160.00				TD			
Warning Alert														
Ruegge 3Q-4H-N165 MWD 0' to 12265' - PR (Def Survey)	4482.13	32.81	4480.31	4449.32	N/A	MAS = 10.00 (m)	0.00	0.00				Surface		
4482.01	32.81	4480.17	4449.20	134038.62	MAS = 10.00 (m)	13.00	13.00				MinPt-O-SF			
4481.89	32.81	4480.00	4449.08	54502.03	MAS = 10.00 (m)	50.00	50.00				MinPts			
533.44	136.68	440.87	396.77	6.00	OSF1.50	10450.00	7160.00				MinPt-CtCt			
534.33	139.31	440.04	395.02	5.89	OSF1.50	10500.00	7160.00				MINPT-O-EOU			
535.62	140.89	440.29	394.73	5.83	OSF1.50	10530.00	7160.00				MinPt-O-ADP			
567.58	173.51	450.39	394.07	5.00	OSF1.50	11170.00	7160.00	OSF<5.00			Enter Alert			
555.68	205.80	417.00	349.88	4.11	OSF1.50	11800.00	7160.00				MinPt-CtCt			
544.67	272.36	361.61	272.32	3.02	OSF1.50	12940.00	7160.00				MinPt-CtCt			
534.81	378.68	280.87	156.14	2.13	OSF1.50	14660.00	7160.00				MinPts			
534.86	377.87	281.48	157.00	2.13	OSF1.50	14667.02	7160.00				TD			
Warning Alert														
Willow 22-21-3L - Plan (Def Plan)	7285.17	279.07	7098.52	7006.10	39.40	OSF1.50	0.00	0.00				Surface		
7272.28	279.15	7085.58	6993.13	39.32	OSF1.50	13.00	13.00				WRP			
978.11	298.09	778.37	680.02	4.96	OSF1.50	6350.00	6288.79	OSF<5.00			Enter Alert			
551.48	301.70	347.37	249.78	2.78	OSF1.50	6900.00	6819.07				MinPt-O-SF			
541.37	294.82	341.60	246.55	2.80	OSF1.50	6940.00	6852.53				MinPt-O-ADP			
538.14	290.64	341.05	247.51	2.82	OSF1.50	6960.00	6868.79				MINPT-O-EOU			
535.47	280.84	344.68	254.63	2.91	OSF1.50	7000.00	6900.31				MinPt-CtCt			
625.75	199.09	488.61	426.66	4.94	OSF1.50	7250.00	7061.52	OSF>5.00			Exit Alert			
7980.72	61.49	7937.42	7919.22	219.04	OSF1.50	14667.02	7160.00				TD			
Warning Alert														
Chapin 43-4 GYRO 0' to 8023' - PA (Def Survey)	4108.44	32.81	4106.63	4075.63	N/A	MAS = 10.00 (m)	0.00	0.00				Surface		
4108.38	32.81	4106.55	4075.57	285877.13	MAS = 10.00 (m)	13.00	13.00				WRP			
4108.11	32.81	4105.49	4075.31	5071.51	MAS = 10.00 (m)	210.00	210.00				MinPts			
4108.13	32.81	4105.49	4075.32	4966.22	MAS = 10.00 (m)	220.00	220.00				MINPT-O-EOU			
4109.88	32.81	4107.10	4077.07	4223.70	MAS = 10.00 (m)	310.00	309.97				MinPt-O-SF			
4768.71	32.81	4753.01	4735.91	337.99	MAS = 10.00 (m)	4000.00	3941.40				MinPt-O-SF			
4822.91	32.81	4807.84	4790.10	357.99	MAS = 10.00 (m)	4600.00	4538.79				MinPt-O-SF			
4831.19	32.81	4816.34	4798.38	364.54	MAS = 10.00 (m)	4900.00	4838.79				MinPt-O-SF			
4836.61	32.81	4821.81	4803.80	366.51	MAS = 10.00 (m)	5110.00	5048.79				MinPt-O-SF			
4857.92	32.81	4842.14	4825.11	342.64	MAS = 10.00 (m)	5910.00	5848.79				MinPts			
4857.97	32.81	4842.25	4825.17	343.86	MAS = 10.00 (m)	5980.00	5918.79				MINPT-O-EOU			
4850.16	32.81	4835.10	4817.36	360.14	MAS = 10.00 (m)	6505.01	6443.80				MinPt-O-SF			
576.72	175.75	458.69	400.98	4.97	OSF1.50	11620.00	7160.00	OSF<5.00			Enter Alert			
563.05	184.27	439.63	378.78	4.61	OSF1.50	11740.00	7160.00				MinPt-CtCt			
563.23	184.97	439.38	378.26	4.59	OSF1.50	11760.00	7160.00				MinPts			
564.12	185.56	439.87	378.55	4.59	OSF1.50	11780.00	7160.00				MinPt-O-SF			
599.19	182.00	477.32	417.19	4.97	OSF1.50	11950.00	7160.00	OSF>5.00			Exit Alert			
2975.45	65.35	2931.35	2910.11	69.98	OSF1.50	14667.02	7160.00				TD			
Warning Alert														
Willow 22-20-2L - Plan (Def Plan)	7237.58	280.78	7049.79	6956.80	38.91	OSF1.50	0.00	0.00				Surface		
7224.70	280.86	7036.86	6943.84	38.83	OSF1.50	13.00	13.00				WRP			
1168.27	352.23	932.64	816.04	5.00	OSF1.50	6150.00	6088.79	OSF<5.00			Enter Alert			
609.87	472.13	292.13	137.74	1.95	OSF1.50	6940.00	6852.53				MinPt-O-SF			
609.04	471.46	291.70	137.58	1.95	OSF1.50	6950.00	6860.70				MinPt-O-ADP			
608.48	470.61	291.66	137.87	1.95	OSF1.50	6960.00	6868.79				MINPT-O-EOU			
608.18	468.39	292.75	139.79	1.96	OSF1.50	6980.00	6884.72				MinPt-CtCt			
924.46	290.16	726.76	634.30	4.93	OSF1.50	7530.00	7153.03	OSF>5.00			Exit Alert			
7986.57	55.69	7947.16	7930.87	244.92	OSF1.50	14667.02	7160.00				TD			
Warning Alert														
Joker 26N1-9HZ MWD 0' to 12052' - PR (Def Survey)	2720.60	32.81	2718.79	2687.80	N/A	MAS = 10.00 (m)	0.00	0.00				Surface		
2720.59	32.81	2718.77	2687.78	206953.09	MAS = 10.00 (m)	13.00	13.00				WRP			
2720.26	32.81	2717.95	2687.45	5497.65	MAS = 10.00 (m)	140.00	140.00				MinPts			
2720.40	32.81	2717.79	2687.60	3402.43	MAS = 10.00 (m)	200.00	200.00				MINPT-O-EOU			
2586.24	32.81	2572.67	2553.44	216.28	MAS = 10.00 (m)	2240.00	2211.31				MinPts			
2586.68	32.81	2572.29	2553.87	202.59	MAS = 10.00 (m)	2360.00	2329.27				MINPT-O-EOU			
2584.69	32.81	2568.35	2551.88	175.60	MAS = 10.00 (m)	2720.00	2683.14				MinPts			
2584.73	32.81	2568.31	2551.92	174.64	MAS = 10.00 (m)	2740.00	2702.80				MINPT-O-EOU			
2634.95	36.04	2610.39	2598.91	114.72	OSF1.50	4180.00	4119.48				MinPt-O-SF			

Offset Trajectory	Separation			Allow Dev. (ft)	Sep. Fact.	Controlling Rule	Reference Trajectory		Risk Level			Alert	Status
	Ct-Ct (ft)	MAS (ft)	EOU (ft)				MD (ft)	TVD (ft)	Alert	Minor	Major		
	2645.64	36.78	2620.58	2608.85	112.79	OSF1.50	4270.00	4208.05				MinPt-O-SF	
	709.40	132.24	620.62	577.16	8.14	OSF1.50	7480.00	7144.34				MinPt-CiCt	
	705.59	183.11	582.91	522.49	5.82	OSF1.50	8380.00	7160.00				MinPt-CiCt	
	710.92	208.89	571.02	502.03	5.14	OSF1.50	8830.00	7160.00				MINPT-O-EOU	
	716.82	215.52	572.49	501.31	5.02	OSF1.50	8960.00	7160.00				MinPt-O-ADP	
	718.54	217.17	573.11	501.38	4.99	OSF1.50	8990.00	7160.00	OSF<5.00			Enter Alert	
	757.05	240.29	596.17	516.76	4.75	OSF1.50	9410.00	7160.00				MinPt-O-SF	
	774.70	235.08	617.20	539.62	4.98	OSF1.50	9510.00	7160.00	OSF>5.00			Exit Alert	
	5394.83	53.33	5358.74	5341.50	156.40	OSF1.50	14667.02	7160.00				TD	
Willow 22-18-3L - Plan (Def Plan)													Warning Alert
	7324.60	286.42	7133.04	7038.17	38.59	OSF1.50	0.00	0.00				Surface	
	7311.78	286.53	7120.16	7025.25	38.51	OSF1.50	13.00	13.00				WRP	
	1505.42	453.78	1202.33	1051.65	4.99	OSF1.50	6040.00	5978.79	OSF<5.00			Enter Alert	
	962.28	622.10	545.37	340.18	2.33	OSF1.50	6990.00	6892.56				MinPts	
	962.17	621.87	545.39	340.31	2.33	OSF1.50	7000.00	6900.31				MinPt-CiCt	
	1396.11	427.81	1107.15	968.30	4.99	OSF1.50	7820.00	7160.00	OSF>5.00			Exit Alert	
	8016.88	90.26	7954.41	7926.62	144.09	OSF1.50	14667.02	7160.00				TD	
Olin 41-4 MWD 0' to 8158' - PR (Def Survey)													Warning Alert
	6766.07	32.81	6764.25	6733.26	N/A	MAS = 10.00 (m)	0.00	0.00				Surface	
	6765.97	32.81	6764.13	6733.16	229120.80	MAS = 10.00 (m)	13.00	13.00				MinPt-O-SF	
	6765.83	32.81	6763.91	6733.02	64779.11	MAS = 10.00 (m)	60.00	60.00				MinPts	
	6765.94	32.81	6763.44	6733.13	9852.77	MAS = 10.00 (m)	200.00	200.00				MINPT-O-EOU	
	7015.51	32.81	7005.40	6982.70	824.01	MAS = 10.00 (m)	1800.00	1778.79				MinPt-O-SF	
	7240.39	32.81	7227.72	7207.58	654.35	MAS = 10.00 (m)	3050.00	3007.53				MinPt-O-SF	
	7414.32	32.81	7397.71	7381.51	493.75	MAS = 10.00 (m)	4000.00	3941.40				MinPt-O-SF	
	7435.59	32.81	7420.62	7402.79	556.24	MAS = 10.00 (m)	4940.00	4878.79				MINPT-O-EOU	
	7435.57	32.81	7420.64	7402.76	557.73	MAS = 10.00 (m)	4960.00	4898.79				MinPts	
	7487.02	32.81	7466.39	7454.21	393.48	MAS = 10.00 (m)	6050.00	5988.79				MINPT-O-EOU	
	7488.24	32.81	7467.04	7455.43	381.96	MAS = 10.00 (m)	6080.00	6018.79				MINPT-O-EOU	
	7503.02	33.70	7480.01	7469.32	350.57	OSF1.50	6360.00	6298.79				MinPt-O-ADP	
	971.47	294.78	773.69	676.69	4.99	OSF1.50	14320.00	7160.00	OSF<5.00			Enter Alert	
	964.27	300.67	762.82	663.60	4.84	OSF1.50	14440.00	7160.00				MinPt-CiCt	
	964.34	300.97	762.72	663.37	4.84	OSF1.50	14450.00	7160.00				MINPT-O-EOU	
	964.51	301.23	762.74	663.28	4.83	OSF1.50	14460.00	7160.00				MinPt-O-ADP	
	966.23	301.97	764.06	664.26	4.83	OSF1.50	14500.00	7160.00				MinPt-O-SF	
	990.94	300.07	790.36	690.87	4.97	OSF1.50	14667.02	7160.00				TD	
Willow 22-17-2L - Plan (Def Plan)													Warning Alert
	7303.99	290.57	7109.67	7013.42	37.93	OSF1.50	0.00	0.00				Surface	
	7291.23	290.69	7096.83	7000.53	37.85	OSF1.50	13.00	13.00				WRP	
	1650.79	497.33	1318.70	1153.46	4.99	OSF1.50	5970.00	5908.79	OSF<5.00			Enter Alert	
	1141.06	660.82	698.70	480.25	2.60	OSF1.50	6970.00	6876.80				MinPts	
	1141.02	660.74	698.68	480.28	2.60	OSF1.50	6980.00	6884.72				MinPts	
	1577.70	483.63	1251.82	1094.07	4.97	OSF1.50	7880.00	7160.00	OSF>5.00			Exit Alert	
	8041.21	116.15	7961.53	7925.05	110.14	OSF1.50	14667.02	7160.00				TD	
Willow 22-5-4L - Plan (Def Plan)													Warning Alert
	7488.65	292.22	7293.23	7196.43	38.67	OSF1.50	0.00	0.00				Surface	
	7475.87	292.34	7280.38	7183.54	38.59	OSF1.50	13.00	13.00				WRP	
	1649.19	499.58	1315.60	1149.61	4.96	OSF1.50	6160.00	6098.79	OSF<5.00			Enter Alert	
	1197.31	635.63	771.64	561.68	2.84	OSF1.50	7050.00	6937.69				MinPts	
	1197.24	635.52	771.62	561.72	2.84	OSF1.50	7060.00	6944.89				MinPts	
	1582.63	484.44	1256.18	1098.19	4.98	OSF1.50	7870.00	7160.00	OSF>5.00			Exit Alert	
	8043.46	117.13	7963.01	7926.33	109.55	OSF1.50	14667.02	7160.00				TD	
Willow 22-15-3L - Plan (Def Plan)													Warning Alert
	7422.15	305.68	7217.76	7116.48	36.63	OSF1.50	0.00	0.00				Surface	
	7409.51	305.84	7205.02	7103.68	36.55	OSF1.50	13.00	13.00				WRP	
	1917.24	576.86	1532.13	1340.38	5.00	OSF1.50	6070.00	6008.79	OSF<5.00			Enter Alert	
	1553.48	688.90	1092.82	864.58	3.39	OSF1.50	7000.00	6900.31				MinPts	
	1896.26	577.63	1508.29	1316.64	4.98	OSF1.50	7890.00	7160.00	OSF>5.00			Exit Alert	
	8106.26	171.98	7989.37	7934.28	73.52	OSF1.50	14667.02	7160.00				TD	
Willow 22-14-2L - Plan (Def Plan)													Warning Alert
	7415.95	314.84	7205.45	7101.11	35.53	OSF1.50	0.00	0.00				Surface	
	7403.39	315.02	7192.77	7088.37	35.45	OSF1.50	13.00	13.00				WRP	
	2035.88	614.04	1625.98	1421.83	4.98	OSF1.50	6110.00	6048.79	OSF<5.00			Enter Alert	
	1751.58	701.06	1283.02	1050.51	3.76	OSF1.50	6980.00	6884.72				MinPts	
	1751.66	701.14	1283.04	1050.53	3.76	OSF1.50	6990.00	6892.56				MinPt-O-SF	
	2039.77	617.84	1625.32	1421.92	5.00	OSF1.50	7840.00	7160.00	OSF>5.00			Exit Alert	
	8147.13	199.91	8011.67	7947.21	63.15	OSF1.50	14667.02	7160.00				TD	
Willow 22-4-4L - Plan (Def Plan)													Warning Alert
	7655.23	332.58	7432.91	7322.65	34.71	OSF1.50	0.00	0.00				Surface	
	7642.83	332.80	7420.36	7310.04	34.63	OSF1.50	13.00	13.00				WRP	
	2261.70	680.53	1807.48	1581.17	4.99	OSF1.50	6600.00	6538.51	OSF<5.00			Enter Alert	
	2187.90	705.40	1716.72	1482.50	4.66	OSF1.50	7040.00	6930.40				MinPt-CiCt	
	2187.96	705.55	1716.66	1482.41	4.66	OSF1.50	7050.00	6937.69				MinPts	
	2188.32	705.78	1716.84	1482.54	4.66	OSF1.50	7070.00	6951.98				MinPt-O-SF	
	2279.99	688.01	1819.65	1591.98	5.00	OSF1.50	7530.00	7153.03	OSF>5.00			Exit Alert	
	8246.06	255.11	8073.81	7990.94	49.71	OSF1.50	14667.02	7160.00				TD	
Ottesen 1 GYRO 0' to 7992' - TA (Def Survey)													Pass
	3853.65	32.81	3851.83	3820.84	N/A	MAS = 10.00 (m)	0.00	0.00				Surface	
	3853.63	32.81	3851.82	3820.82	N/A	MAS = 10.00 (m)	10.00	10.00				MinPts	
	3853.63	32.81	3851.82	3820.82	N/A	MAS = 10.00 (m)	13.00	13.00				WRP	
	3853.59	32.81	3851.43	3820.78	11113.16	MAS = 10.00 (m)	120.00	120.00				MinPts	
	3853.74	32.81	3851.24	3820.93	5606.14	MAS = 10.00 (m)	200.00	200.00				MINPT-O-EOU	
	3856.03	32.81	3853.43	3823.23	4894.04	MAS = 10.00 (m)	300.00	299.98				MinPt-O-SF	
	4202.74	32.81	4191.97	4169.94	457.92	MAS = 10.00 (m)	2330.00	2298.78				MinPt-O-SF	
	4510.36	32.81	4493.88	4477.56	302.97	MAS = 10.00 (m)	4000.00	3941.40				MinPt-O-SF	
	4555.64	32.81	4539.99	4522.83	324.43	MAS = 10.00 (m)	4600.00	4538.79				MinPt-O-SF	
	4556.92	32.81	4541.83	4524.11	337.92	MAS = 10.00 (m)	5010.00	4948.79				MINPT-O-EOU	
	4556.87	32.81	4541.89	4524.07	340.34	MAS = 10.00 (m)	5070.00	5008.79				MinPts	
	635.48	172.35	520.01	463.12	5.57	OSF1.50	11450.00	7160.00				MinPt-CiCt	
	635.66	173.11	519.72	462.55	5.55	OSF1.50	11470.00	7160.00				MINPT-O-EOU	
	635.99	173.47	519.81	462.52	5.54	OSF1.50	11480.00	7160.00				MinPt-O-ADP	

Offset Trajectory	Separation			Allow Dev. (ft)	Sep. Fact.	Controlling Rule	Reference Trajectory		Risk Level			Alert	Status
	Ct-Ct (ft)	MAS (ft)	EOU (ft)				MD (ft)	TVD (ft)	Alert	Minor	Major		
	637.91	174.29	521.18	463.62	5.53	OSF1.50	11510.00	7160.00				MinPt-O-SF	
	3273.83	67.78	3228.11	3206.05	74.17	OSF1.50	14667.02	7160.00				TD	
Joker 1N3-9HZ MWD 0' to 11936' - PR (Def Survey)													Pass
	2734.07	32.81	2732.25	2701.26	N/A	MAS = 10.00 (m)	0.00	0.00				MinPts	
	2734.07	32.81	2732.26	2701.27	741683.82	MAS = 10.00 (m)	13.00	13.00				WRP	
	2734.22	32.81	2732.17	2701.41	11782.76	MAS = 10.00 (m)	90.00	90.00				MINPT-O-EOU	
	2734.38	32.81	2732.13	2701.57	6353.59	MAS = 10.00 (m)	130.00	130.00				MINPT-O-EOU	
	2636.58	32.81	2625.02	2603.77	270.62	MAS = 10.00 (m)	1790.00	1768.96				MINPT-O-EOU	
	2636.16	32.81	2624.36	2603.35	258.67	MAS = 10.00 (m)	1870.00	1847.60				MinPts	
	2636.23	32.81	2624.26	2603.42	254.63	MAS = 10.00 (m)	1900.00	1877.09				MINPT-O-EOU	
	2645.94	32.81	2630.30	2613.13	188.59	MAS = 10.00 (m)	2610.00	2575.02				MINPT-O-EOU	
	2693.69	35.39	2669.56	2658.30	119.51	OSF1.50	3920.00	3862.74				MINPT-O-EOU	
	2693.83	35.55	2669.59	2658.28	118.97	OSF1.50	3940.00	3882.40				MinPt-O-SF	
	2718.23	37.19	2692.90	2681.04	114.52	OSF1.50	4290.00	4228.99				MinPt-O-ADP	
	2729.99	37.32	2704.58	2692.68	114.60	OSF1.50	4370.00	4308.84				MinPt-O-SF	
	814.47	116.99	735.86	697.48	10.59	OSF1.50	7160.00	7011.23				MinPt-CtCt	
	815.68	120.06	735.03	695.62	10.32	OSF1.50	7240.00	7056.40				MINPT-O-EOU	
	817.27	121.97	735.35	695.30	10.18	OSF1.50	7290.00	7080.79				MinPt-O-ADP	
	845.06	164.97	734.47	680.09	7.75	OSF1.50	8150.00	7160.00				MINPT-O-EOU	
	862.72	217.54	717.12	645.19	5.98	OSF1.50	9000.00	7160.00				MinPt-CtCt	
	868.66	237.36	709.82	631.39	5.52	OSF1.50	9340.00	7160.00				MinPts	
	868.97	237.58	709.98	631.39	5.52	OSF1.50	9350.00	7160.00				MinPt-O-SF	
	5417.89	61.00	5376.69	5356.89	136.78	OSF1.50	14667.02	7160.00				TD	
Cofor 13N-34HZ MWD 0' to 11496' - PR (Def Survey)													Pass
	10668.75	65.38	10624.55	10603.36	251.70	OSF1.50	0.00	0.00				Surface	
	10660.13	65.48	10615.88	10594.66	251.12	OSF1.50	13.00	13.00				MinPt-O-SF	
	950.55	98.94	880.29	851.61	16.35	OSF1.50	14667.02	7160.00				MinPts	
Chapin 44-4 GYRO 0' to 8028' - PA (Def Survey)													Pass
	2996.90	32.81	2995.09	2964.09	N/A	MAS = 10.00 (m)	0.00	0.00				Surface	
	2996.82	32.81	2994.99	2964.01	164759.35	MAS = 10.00 (m)	13.00	13.00				MinPt-O-SF	
	2995.35	32.81	2992.70	2962.55	3568.31	MAS = 10.00 (m)	220.00	220.00				MinPts	
	2996.61	32.81	2993.85	2963.81	3154.98	MAS = 10.00 (m)	300.00	299.98				MinPt-O-SF	
	3255.62	32.81	3246.44	3222.82	429.58	MAS = 10.00 (m)	1960.00	1936.07				MinPt-O-SF	
	3617.22	32.81	3601.82	3584.41	261.93	MAS = 10.00 (m)	4000.00	3941.40				MinPt-O-SF	
	3671.05	32.81	3656.58	3638.24	285.17	MAS = 10.00 (m)	4600.00	4538.79				MinPt-O-SF	
	3716.30	32.81	3701.79	3683.49	287.86	MAS = 10.00 (m)	6360.00	6298.79				MinPt-O-SF	
	3708.92	32.81	3694.48	3676.11	288.86	MAS = 10.00 (m)	6600.00	6538.51				MinPt-O-SF	
	3623.44	32.81	3609.20	3590.63	286.64	MAS = 10.00 (m)	6880.00	6801.89				MinPt-O-SF	
	968.86	131.73	880.49	837.13	11.15	OSF1.50	10500.00	7160.00				MinPt-CtCt	
	969.30	132.87	880.19	836.43	11.06	OSF1.50	10530.00	7160.00				MINPT-O-EOU	
	969.66	133.24	880.30	836.42	11.03	OSF1.50	10540.00	7160.00				MinPt-O-ADP	
	980.32	136.37	888.87	843.94	10.89	OSF1.50	10650.00	7160.00				MinPt-O-SF	
	4277.57	73.65	4227.94	4203.92	89.03	OSF1.50	14667.02	7160.00				TD	
Olin 42-4A MWD 0' to 8270' - PA (Def Survey)													Pass
	6759.78	32.81	6757.96	6726.97	N/A	MAS = 10.00 (m)	0.00	0.00				Surface	
	6759.66	32.81	6757.82	6726.85	193510.19	MAS = 10.00 (m)	13.00	13.00				MinPt-O-SF	
	6759.46	32.81	6756.96	6726.65	9790.24	MAS = 10.00 (m)	200.00	200.00				MinPts	
	7064.88	32.81	7054.12	7032.08	771.36	MAS = 10.00 (m)	2140.00	2113.01				MinPt-O-SF	
	985.92	252.03	816.95	733.89	5.92	OSF1.50	13170.00	7160.00				MinPt-CtCt	
	986.22	252.83	816.77	733.39	5.90	OSF1.50	13190.00	7160.00				MINPT-O-EOU	
	986.52	253.19	816.86	733.33	5.89	OSF1.50	13200.00	7160.00				MinPt-O-SF	
	990.45	254.84	819.84	735.61	5.87	OSF1.50	13260.00	7160.00				MinPt-O-ADP	
	1794.54	185.71	1670.20	1608.83	14.61	OSF1.50	14667.02	7160.00				TD	
Cofor 13C-34HZ MWD 0' to 11790' - PR (Def Survey)													Pass
	10818.32	72.49	10769.39	10745.84	229.57	OSF1.50	0.00	0.00				Surface	
	10809.57	72.58	10760.58	10736.99	229.07	OSF1.50	13.00	13.00				WRP	
	10658.39	71.65	10610.02	10586.74	228.87	OSF1.50	240.00	240.00				MinPt-O-SF	
	1099.22	229.52	942.55	869.70	7.47	OSF1.50	14667.02	7160.00				MinPts	
Rocky 38N-33HZ MWD 0' to 13397' - PR (Def Survey)													Pass
	10751.24	76.67	10699.53	10674.58	215.41	OSF1.50	0.00	0.00				Surface	
	10742.59	76.69	10690.85	10665.89	215.15	OSF1.50	13.00	13.00				MinPt-O-SF	
	1129.31	228.88	972.79	900.43	7.72	OSF1.50	14667.02	7160.00				MinPts	
Randle Red XX 3-2D GYRO+BLIND 0' to 8034' - PA (Def Survey)													Pass
	6013.02	32.81	6011.21	5980.21	N/A	MAS = 10.00 (m)	0.00	0.00				Surface	
	6012.98	32.81	6011.15	5980.17	568713.54	MAS = 10.00 (m)	13.00	13.00				WRP	
	6012.96	32.81	6011.11	5980.15	159137.57	MAS = 10.00 (m)	30.00	30.00				MinPts	
	6013.05	32.81	6011.05	5980.25	31688.72	MAS = 10.00 (m)	90.00	90.00				MINPT-O-EOU	
	6013.21	32.81	6011.04	5980.40	16698.13	MAS = 10.00 (m)	130.00	130.00				MINPT-O-EOU	
	6015.86	32.81	6013.23	5983.05	7403.71	MAS = 10.00 (m)	300.00	299.98				MinPt-O-SF	
	6687.43	32.81	6668.33	6654.62	382.12	MAS = 10.00 (m)	4000.00	3941.40				MinPt-O-SF	
	6743.55	32.81	6724.02	6710.74	376.02	MAS = 10.00 (m)	4610.00	4548.79				MinPt-O-SF	
	1265.60	380.39	1011.30	885.21	5.01	OSF1.50	13590.00	7160.00				MinPt-O-SF	
	1264.27	379.65	1010.52	884.63	5.01	OSF1.50	13620.00	7160.00				MinPt-O-ADP	
	1263.99	379.36	1010.44	884.63	5.02	OSF1.50	13630.00	7160.00				MINPT-O-EOU	
	1263.61	378.38	1010.76	885.23	5.03	OSF1.50	13660.00	7160.00				MinPt-CtCt	
	1614.07	291.76	1419.04	1322.32	8.34	OSF1.50	14667.02	7160.00				TD	
Cofor 35N-34HZ MWD 0' to 11687' - PR (Def Survey)													Pass
	10727.77	79.51	10674.16	10648.26	207.07	OSF1.50	0.00	0.00				Surface	
	10719.14	79.61	10665.46	10639.53	206.64	OSF1.50	13.00	13.00				WRP	
	10311.60	77.51	10259.32	10234.09	204.30	OSF1.50	700.00	697.47				MinPt-O-SF	
	10026.62	75.44	9975.72	9951.18	204.23	OSF1.50	1340.00	1326.61				MinPt-O-SF	
	10001.60	75.26	9950.82	9926.34	204.24	OSF1.50	1400.00	1385.59				MinPt-O-SF	
	9846.33	74.19	9796.24	9772.13	204.18	OSF1.50	1790.00	1768.96				MinPt-O-SF	
	9236.22	70.25	9188.19	9165.97	207.73	OSF1.50	3975.96	3917.75				MinPt-O-SF	
	9113.31	68.88	9066.05	9044.43	210.67	OSF1.50	4505.01	4443.80				MinPt-O-SF	
	1290.68	296.28	1090.09	994.40	6.70	OSF1.50	14667.02	7160.00				MinPts	
Cofor 14N-34HZ MWD 0' to 11568' - PR (Def Survey)													Pass
	10792.66	74.36	10742.48	10718.30	223.12	OSF1.50	0.00	0.00				Surface	

Offset Trajectory	Separation			Allow Dev. (ft)	Sep. Fact.	Controlling Rule	Reference Trajectory		Risk Level			Alert	Status
	Ct-Ct (ft)	MAS (ft)	EOU (ft)				MD (ft)	TVD (ft)	Alert	Minor	Major		
	10784.16	74.44	10733.92	10709.71	222.69	OSF1.50	13.00	13.00				WRP	
	10650.02	73.58	10600.37	10576.44	222.59	OSF1.50	220.00	220.00				MinPt-O-SF	
	1919.85	344.02	1887.95	1575.83	8.53	OSF1.50	14667.02	7160.00				MinPts	
Coffer 14C-34HZ MWD 0' to 11779' - PR (Def Survey)													Pass
	10971.38	80.56	10917.06	10890.81	208.94	OSF1.50	0.00	0.00				Surface	
	10962.77	80.66	10908.40	10882.12	208.53	OSF1.50	13.00	13.00				WRP	
	10621.18	78.84	10568.01	10542.34	206.80	OSF1.50	570.00	568.97				MinPt-O-SF	
	2185.50	359.82	1943.35	1825.68	9.25	OSF1.50	14667.02	7160.00				MinPts	
HDI KF 10-1H MWD 0' to 15725' - PR (Def Survey)													Pass
	5047.22	32.81	5045.33	5014.42	61658.16	MAS = 10.00 (m)	0.00	0.00				Surface	
	5047.20	32.81	5045.27	5014.39	41951.06	MAS = 10.00 (m)	13.00	13.00				WRP	
	2373.97	157.36	2267.96	2216.61	23.08	OSF1.50	7860.00	7160.00				MinPt-CtCt	
	2374.01	157.50	2267.90	2216.51	23.06	OSF1.50	7880.00	7160.00				MINPT-O-EOU	
	2374.06	157.56	2267.91	2216.49	23.06	OSF1.50	7890.00	7160.00				MinPt-O-ADP	
	2372.43	183.02	2249.31	2189.41	19.77	OSF1.50	8320.00	7160.00				MinPts	
	2372.58	183.06	2249.43	2189.52	19.77	OSF1.50	8350.00	7160.00				MinPt-O-SF	
	2402.60	197.13	2270.03	2205.47	18.58	OSF1.50	8840.00	7160.00				MINPT-O-EOU	
	2415.16	218.36	2268.47	2196.81	16.83	OSF1.50	9050.00	7160.00				MINPT-O-EOU	
	2417.62	220.94	2269.21	2196.69	16.64	OSF1.50	9110.00	7160.00				MinPt-O-ADP	
	2429.94	234.01	2272.81	2195.93	15.78	OSF1.50	9350.00	7160.00				MINPT-O-EOU	
	2430.45	234.76	2272.82	2195.68	15.73	OSF1.50	9360.00	7160.00				MinPt-O-ADP	
	2367.47	312.44	2158.09	2055.03	11.47	OSF1.50	10330.00	7160.00				MinPt-O-SF	
	2366.83	312.29	2157.53	2054.54	11.47	OSF1.50	10380.00	7160.00				MinPt-O-ADP	
	2366.80	312.25	2157.53	2054.55	11.48	OSF1.50	10390.00	7160.00				MinPts	
	2421.76	378.82	2168.12	2042.94	9.66	OSF1.50	11430.00	7160.00				MinPt-CtCt	
	2351.86	468.27	2038.61	1883.59	7.58	OSF1.50	12630.00	7160.00				MinPt-O-SF	
	2349.13	467.22	2036.55	1881.91	7.58	OSF1.50	12710.00	7160.00				MinPt-O-ADP	
	2348.98	467.06	2036.51	1881.93	7.59	OSF1.50	12720.00	7160.00				MINPT-O-EOU	
	2348.79	466.51	2036.67	1882.27	7.60	OSF1.50	12750.00	7160.00				MinPt-CtCt	
	3031.66	344.77	2800.76	2686.90	13.30	OSF1.50	14667.02	7160.00				TD	
Coffer 36N-34HZ MWD 0' to 11687' - PR (Def Survey)													Pass
	10912.49	91.61	10850.81	10820.87	182.25	OSF1.50	0.00	0.00				Surface	
	10904.07	91.71	10842.33	10812.37	181.92	OSF1.50	13.00	13.00				WRP	
	9475.45	86.99	9416.15	9388.46	171.01	OSF1.50	3975.96	3917.75				MinPt-O-SF	
	2535.37	373.35	2284.56	2162.02	10.32	OSF1.50	14667.02	7160.00				MinPts	
Sparboe 7C-3HZ GYRO+MWD 0' to 14488' - PR (Def Survey)													Pass
	9419.39	155.73	9314.96	9263.66	91.78	OSF1.50	0.00	0.00				Surface	
	9409.37	155.82	9304.89	9253.55	91.63	OSF1.50	13.00	13.00				WRP	
	7381.71	143.84	7284.07	7237.86	79.82	OSF1.50	3975.96	3917.75				MinPt-O-SF	
	2702.44	442.77	2406.26	2259.67	9.21	OSF1.50	12830.00	7160.00				MinPt-O-SF	
	2672.07	430.89	2383.90	2241.19	9.35	OSF1.50	13590.00	7160.00				MinPt-O-SF	
	2666.48	429.96	2379.05	2236.52	9.35	OSF1.50	13920.00	7160.00				MinPts	
	2666.03	427.21	2380.43	2238.82	9.40	OSF1.50	14160.00	7160.00				MinPt-CtCt	
	2666.34	425.27	2382.04	2241.08	9.45	OSF1.50	14370.00	7160.00				MinPt-CtCt	
	2666.37	425.35	2382.03	2241.02	9.45	OSF1.50	14390.00	7160.00				MINPT-O-EOU	
	2666.40	425.39	2382.03	2241.01	9.45	OSF1.50	14400.00	7160.00				MinPt-O-ADP	
	2666.80	425.63	2382.30	2241.17	9.44	OSF1.50	14460.00	7160.00				MinPt-O-SF	
	2666.72	423.03	2383.90	2243.70	9.50	OSF1.50	14667.02	7160.00				MinPts	
HDI KF 10-3H MWD 0' to 15725' - PR (Def Survey)													Pass
	5060.21	32.81	5058.34	5027.40	88851.80	MAS = 10.00 (m)	0.00	0.00				MinPts	
	5060.22	32.81	5058.32	5027.41	60640.49	MAS = 10.00 (m)	13.00	13.00				WRP	
	5060.48	32.81	5057.88	5027.67	6454.43	MAS = 10.00 (m)	180.00	180.00				MinPt-O-SF	
	2803.68	124.34	2719.82	2679.34	34.60	OSF1.50	7020.00	6915.54				MinPt-O-SF	
	2787.21	123.95	2703.54	2663.26	34.56	OSF1.50	7330.00	7098.07				MinPt-CtCt	
	2787.75	133.61	2697.65	2654.14	32.00	OSF1.50	7470.00	7142.20				MinPt-CtCt	
	2788.19	134.73	2697.34	2653.46	31.73	OSF1.50	7530.00	7153.03				MINPT-O-EOU	
	2788.69	135.33	2697.44	2653.36	31.60	OSF1.50	7560.00	7156.58				MinPt-O-ADP	
	2791.38	141.62	2695.94	2649.76	30.19	OSF1.50	7670.00	7160.00				MinPts	
	2791.60	141.65	2696.13	2649.94	30.19	OSF1.50	7680.00	7160.00				MinPt-O-SF	
	2747.41	209.52	2606.71	2537.90	19.94	OSF1.50	8770.00	7160.00				MinPt-CtCt	
	2747.57	210.02	2606.53	2537.56	19.90	OSF1.50	8810.00	7160.00				MINPT-O-EOU	
	2747.79	210.27	2606.57	2537.52	19.87	OSF1.50	8830.00	7160.00				MinPt-O-ADP	
	2754.95	226.58	2602.85	2528.36	18.47	OSF1.50	9120.00	7160.00				MINPT-O-EOU	
	2756.12	227.98	2603.09	2528.13	18.37	OSF1.50	9170.00	7160.00				MinPt-O-ADP	
	2727.75	313.13	2517.97	2414.62	13.18	OSF1.50	10410.00	7160.00				MinPt-CtCt	
	2728.01	313.99	2517.64	2414.01	13.15	OSF1.50	10460.00	7160.00				MINPT-O-EOU	
	2728.43	314.50	2517.72	2413.93	13.13	OSF1.50	10490.00	7160.00				MinPt-O-ADP	
	2718.98	416.97	2439.97	2302.02	9.84	OSF1.50	12000.00	7160.00				MinPt-CtCt	
	2720.60	421.24	2438.72	2299.36	9.75	OSF1.50	12140.00	7160.00				MINPT-O-EOU	
	2722.60	423.58	2439.15	2299.02	9.70	OSF1.50	12210.00	7160.00				MinPt-O-ADP	
	2716.60	466.32	2404.70	2250.28	8.79	OSF1.50	12680.00	7160.00				MinPt-O-SF	
	2715.91	466.07	2404.16	2249.84	8.79	OSF1.50	12730.00	7160.00				MinPts	
	2715.88	466.00	2404.18	2249.88	8.79	OSF1.50	12740.00	7160.00				MinPt-CtCt	
	3328.56	377.84	3075.61	2950.72	13.31	OSF1.50	14667.02	7160.00				TD	