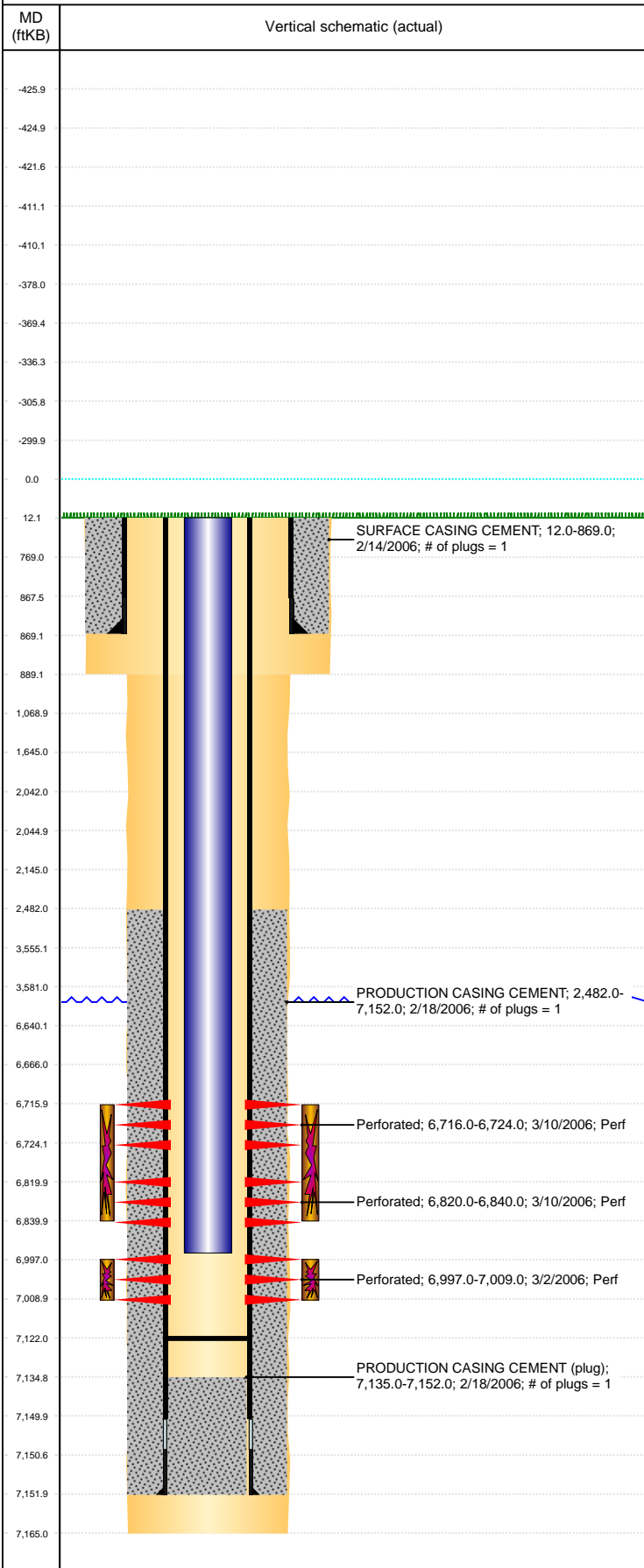


Well Name: HOWARD A27-06

DEVIATED, ORIGINAL HOLE, 9/13/2021 12:17:38 PM



Well Header									
API 05-123-23615		Business Unit DJ BASIN		District 15		Well Config DEVIATED			
KB - GL / MSL (ft... 12.00		Spud Date 2/13/2006		P & A Date		Well Production Status PR		SoRT No	
Comment PIECES OF CFP THROUGHOUT.									
TD DISCREPANCY: 7140' & 7165'									
Surface Location (Congressional)									
Qtr 3 SE	Qtr 4 NW	Section 27	Twnshp 6	Twnsh... N	Range 64	Rng E/... W	Actual Latitude (°) 40.46027730	Actual Longitude (°) -104.54094385	
Wellbore Sections									
Section Des		Size (in)		Act Top, MD (ftKB)		Act Btm, MD (ftKB)			
SURFACE		12 1/4		12		889			
PRODUCTION		7 7/8		889		7,165			
Casing Strings									
Csg Des		Run Date	OD (in)	Wt/Len (lb/ft)	Grade	Top, MD (ftKB)	MD (ftKB)		
Surface		2/14/2006	8 5/8	24.00		12.0	869.0		
Production		2/18/2006	4 1/2	11.60	M-80	12.0	7,152.0		
Cement									
Des		Start Date		Top (ftKB)		Btm (ftKB)			
SURFACE CASING CEMENT		2/14/2006		12.0		869.0			
PRODUCTION CASING CEMENT		2/18/2006		2,482.0		7,152.0			
Zone Statuses									
Zone Name		Status Date	Status	Fluid Type	Job			Prod Method	
CODELL		8/10/2006	PR		DRILLING/COMPLETION - ORIGINAL, 2/13/2006...				
CODELL		2/1/2010	PR	Water				Flowing	
NIOBRARA		2/1/2010	PR	Water				Flowing	
NIOBRARA		7/21/2015	PR						
Perforation Data									
Linked Zone		Bnch/Stg	Entered Shot Total	Top (ftKB)	Btm (ftKB)	Date			
NIOBRARA, ORIGINAL HOLE			48	6,716.00	6,724.00	3/10/2006			
NIOBRARA, ORIGINAL HOLE			120	6,820.00	6,840.00	3/10/2006			
CODELL, ORIGINAL HOLE			48	6,997.00	7,009.00	3/2/2006			
Stimulation Intervals									
Zone		Start Date		Top (ftKB)		Btm (ftKB)			
NIOBRARA, ORIGINAL HOLE		3/10/2006		6,716.0		6,840.0			
CODELL, ORIGINAL HOLE		3/10/2006		6,997.0		7,009.0			
Other In Hole									
Run Date		Des		Make		OD (in)		Top (ftKB) Btm (ftKB)	
Logs									
Date		Type				Top, MD (ftKB)		Btm, MD (ftKB)	
2/17/2006		COMPENSATED DENSITY				2,600.0		7,145.0	
2/17/2006		INDUCTION				869.0		7,165.0	
3/2/2006		CBL/CCL/GR				1,865.0		5,010.0	
3/2/2006		CBL/CCL/GR				5,000.0		7,113.0	
3/2/2006		PERFORATION				1,865.0		5,010.0	
3/2/2006		PERFORATION				5,000.0		7,113.0	
2/1/2016		GYRO				0.0		6,900.0	
Plug Back Total Depths									
Date		Type		Com				Depth (ftKB)	
3/2/2006		FILL		CBL DEPTH LOGGER				7,115.0	
8/29/2006		FILL		CLEANED OUT				7,122.0	