

XEM GAMMA RAY

1in/100ft Measured Depth

Final Print

Recorded Mode

Schlumberger

Company: PDC Energy Inc

Well: Vega 4N

Field Name: Wattenberg

Country Name: United States

State Name: Colorado

County Name: Weld

Latitude: 40°15'18.721"N

Longitude: 104°42'22.880"W

Spud Date: 30-Aug-2020

Log Interval: 1681.50--15574.24(ft)

Depth Source: Driller's Depth

Log Measured From: Drill Floor

Drill Floor Elevation: 4995.00(ft)

Ground Level Elevation: 4967.00(ft)

Permanent Datum: Sea Level

API Number: 05-123-48461

Rig Name: Ensign 142

Rig Type: Land

Job Number: 21CC00164

Print Type: Final Print

Northing: 1336802.37(ft)

Easting: 3221507.34(ft)

Coordinate System: NAD83 Colorado State
Plane, Northern Zone, US
Feet

Disclaimer

THE USE OF AND RELIANCE UPON THIS RECORDED-DATA BY THE HEREIN NAMED COMPANY (AND ANY OF ITS AFFILIATES, PARTNERS, REPRESENTATIVES, AGENTS, CONSULTANTS AND EMPLOYEES) IS SUBJECT TO THE TERMS AND CONDITIONS AGREED UPON BETWEEN SCHLUMBERGER AND THE COMPANY, INCLUDING: (a) RESTRICTIONS ON USE OF THE RECORDED-DATA; (b) DISCLAIMERS AND WAIVERS OF WARRANTIES AND REPRESENTATIONS REGARDING COMPANY'S USE AND RELIANCE UPON THE RECORDED-DATA; AND (c) CUSTOMER'S FULL AND SOLE RESPONSIBILITY FOR ANY INFERENCE DRAWN OR DECISION MADE IN CONNECTION WITH THE USE OF THIS RECORDED-DATA.

Operational Run Summary

Notes

Run 1 (Bit Size: 8.5 in)

DateTime Log Started	26-Jun-2021 12:16:39	DateTime Log Finished	28-Jun-2021 20:59:32
Start Depth (ft)	1706	Stop Depth (ft)	15574
Mud Type	Oil Based Mud	Mud Density (lbm/gal)	10.2
Potassium (%)	0	Barite	Yes
GR Sensor Offset (ft)	24.9	Calibration Coefficient	0.52
DNI Sensor Offset (ft)	20.32		

Log

Description: XEM GAMMA RAY

Format: PDC_XEM_St

Index Scale: 1in/100ft

Index Unit: ft

Index Type: Measured Depth

Creation Date: 30-Jun-2021

TVD_RT		Depth 1 : 100	ROP5_RT		ZTMP_RT,XEM	
ft, Borehole			ft/h, Borehole		degF, Borehole	
1,500	7,500		0	1,000	0	300

GR_RM,XEM

SWOB_RT

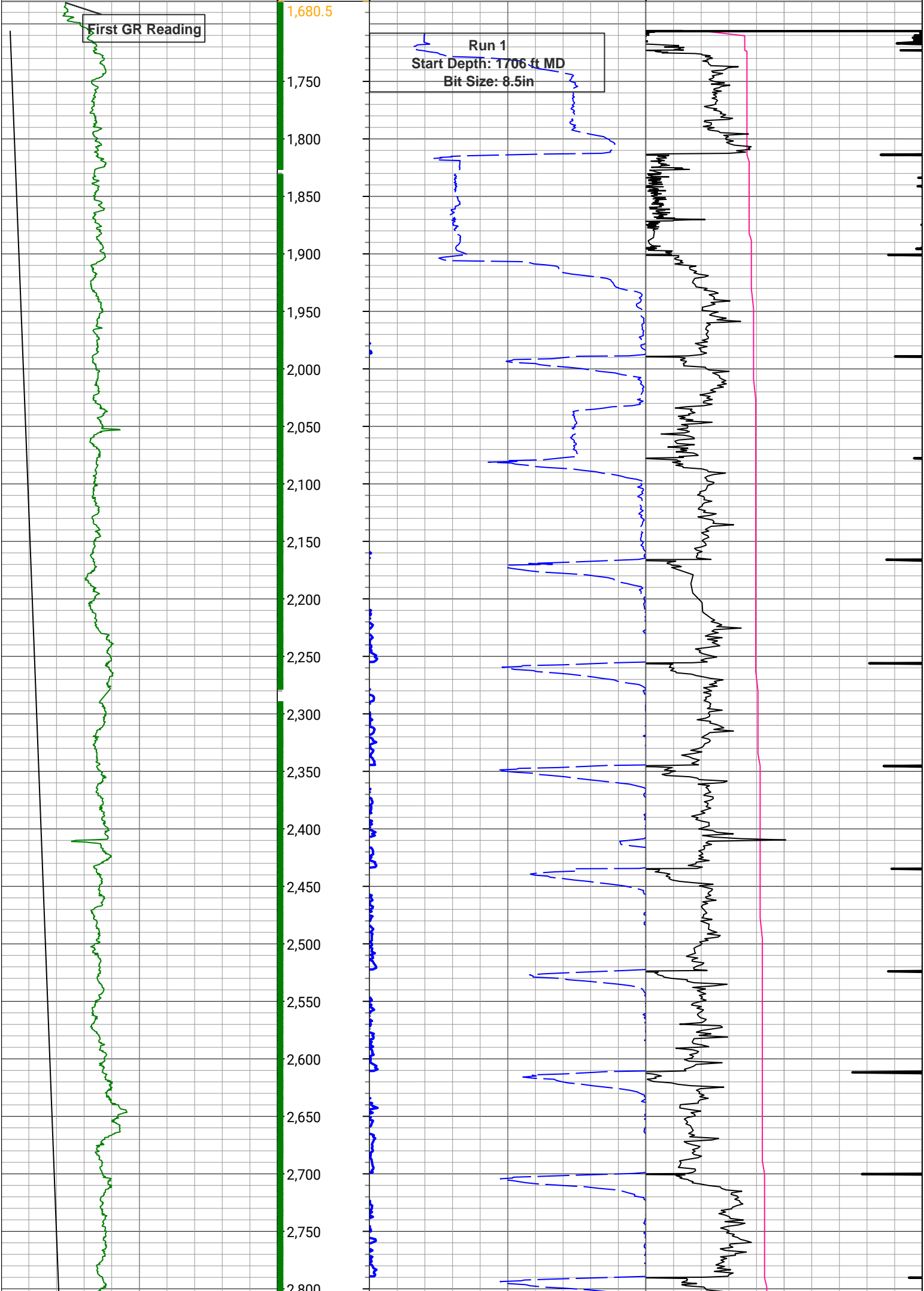
in : ft

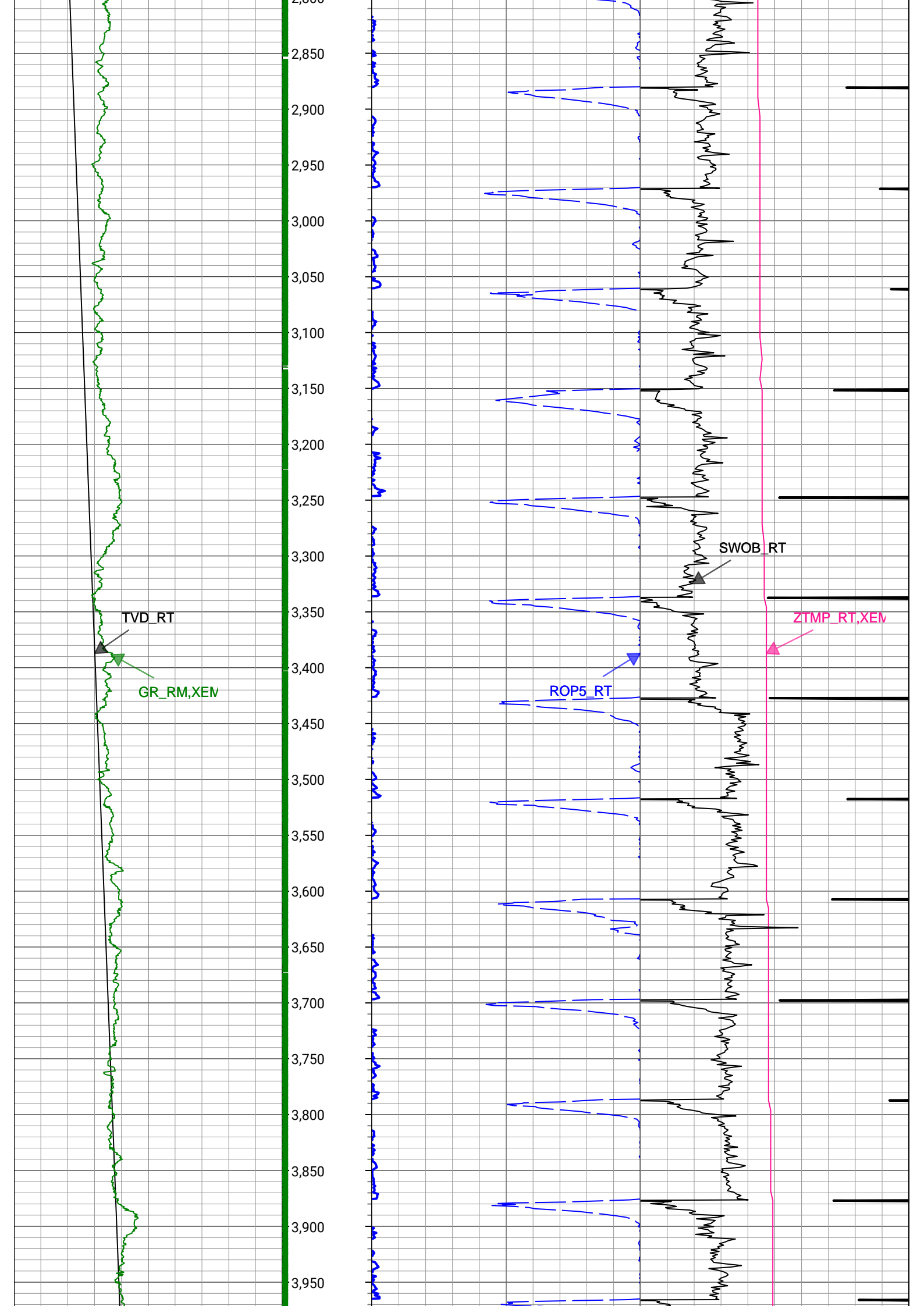
0 gAPI, Borehole 300

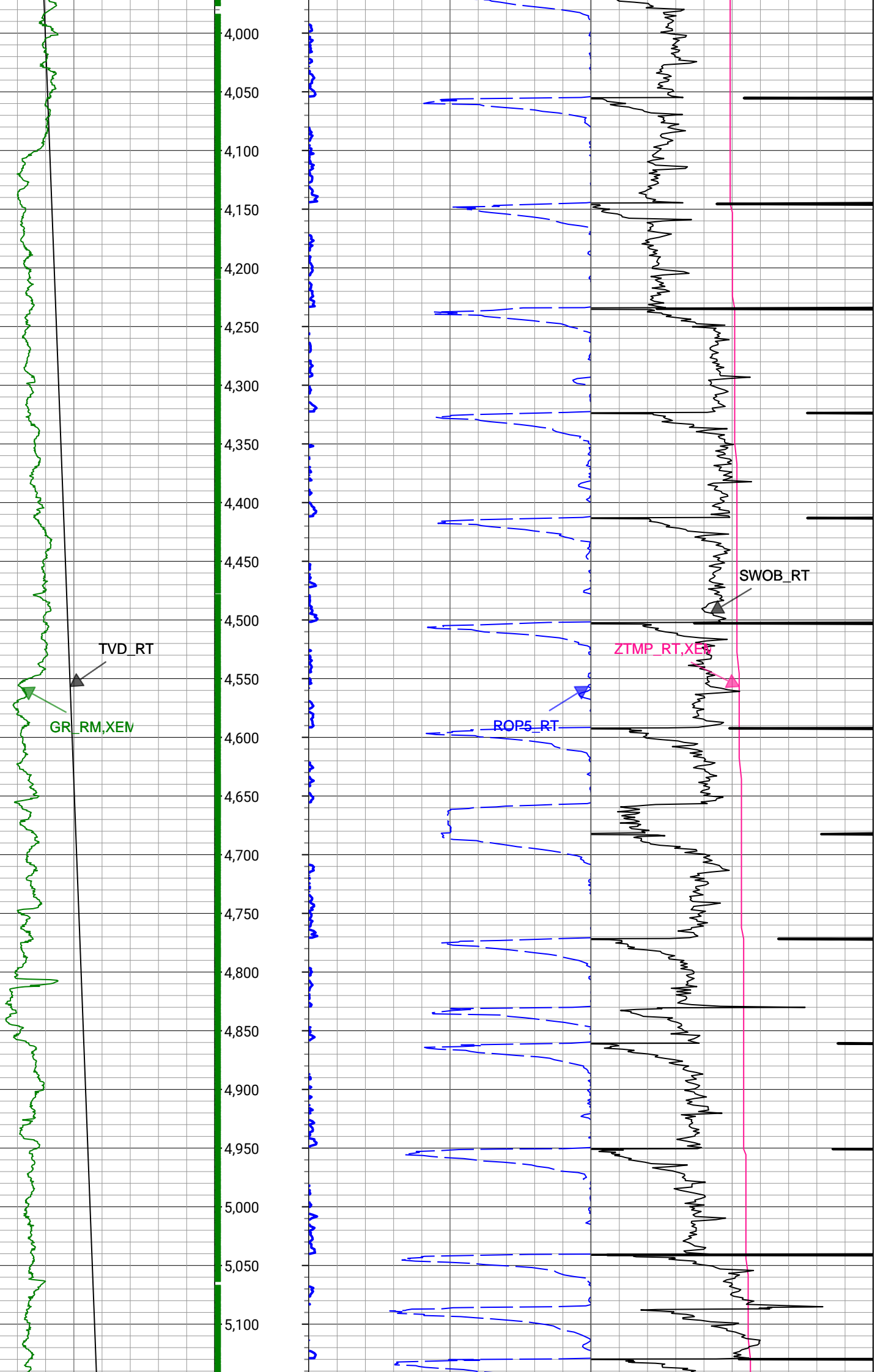
0 1000 lbf, Borehole 50

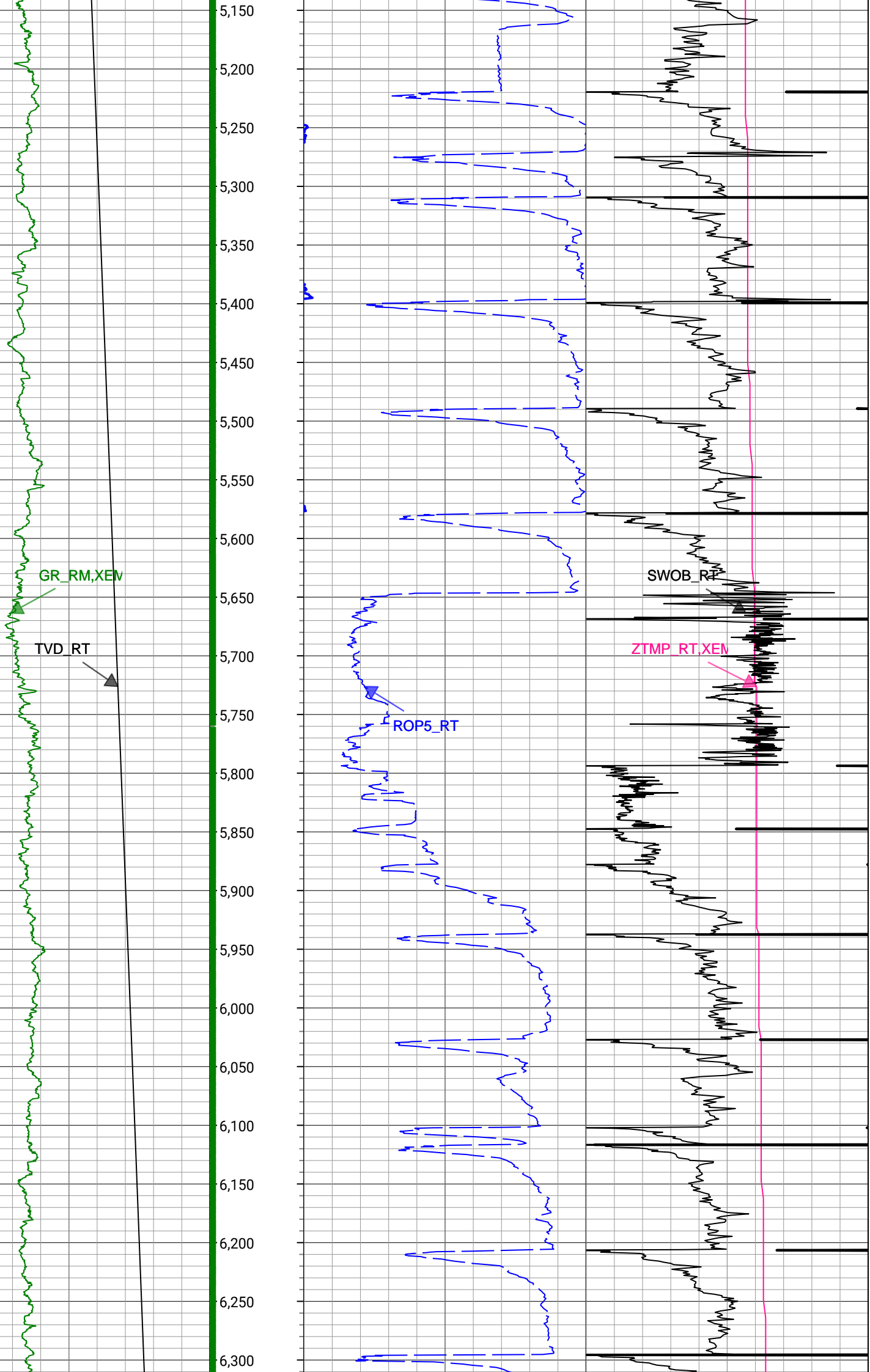
First GR Reading

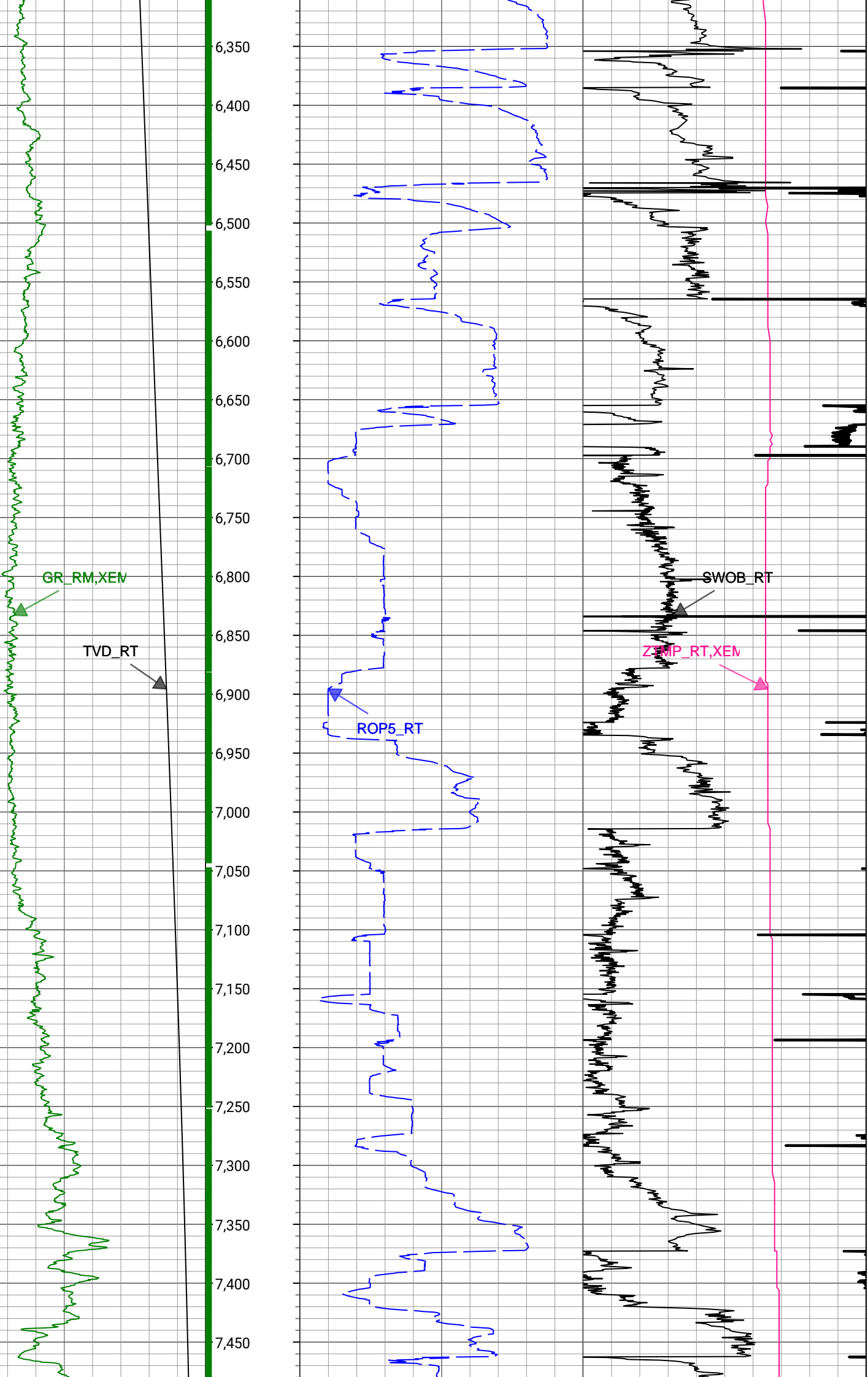
Run 1
Start Depth: 1706 ft MD
Bit Size: 8.5in

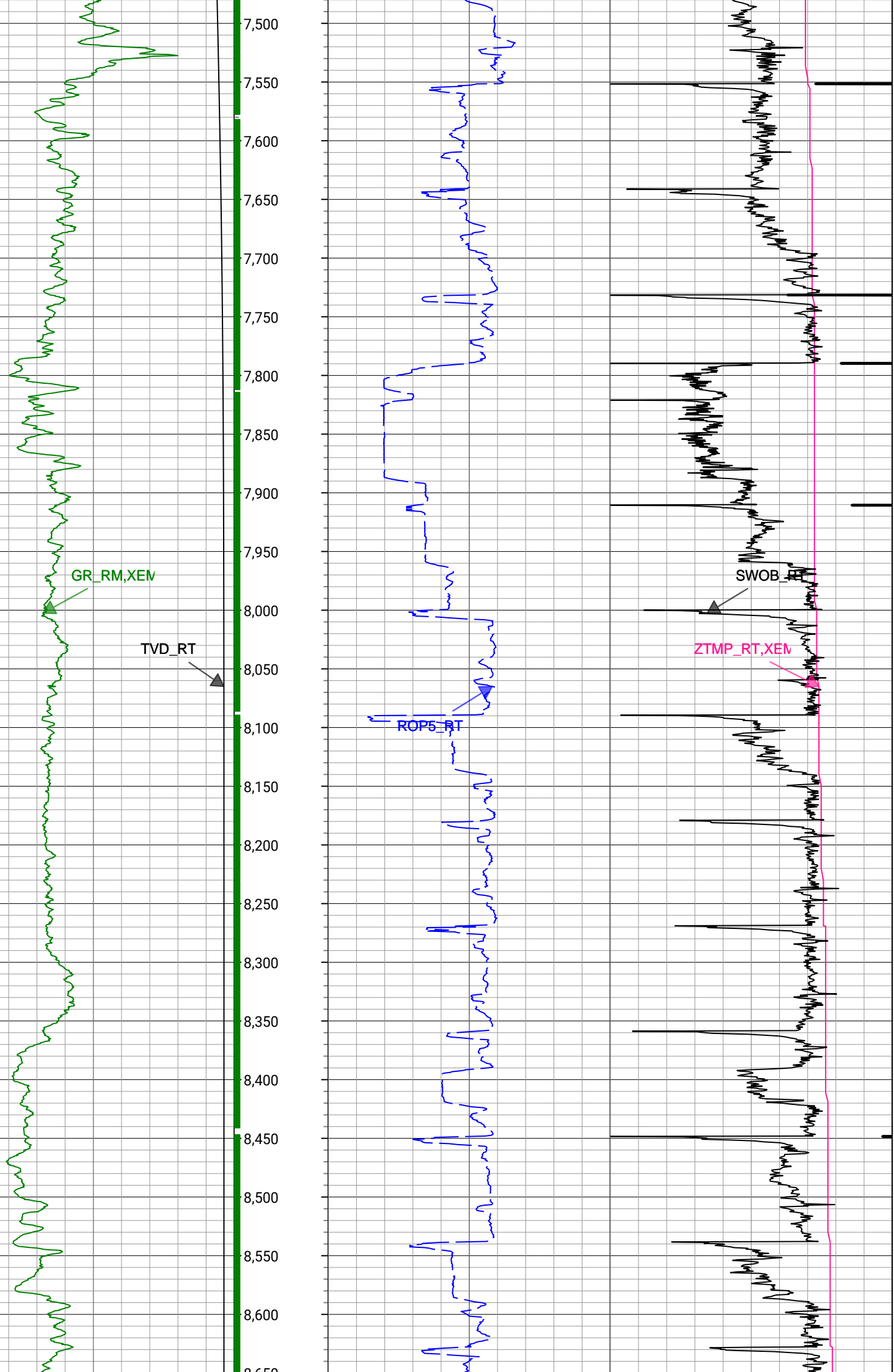


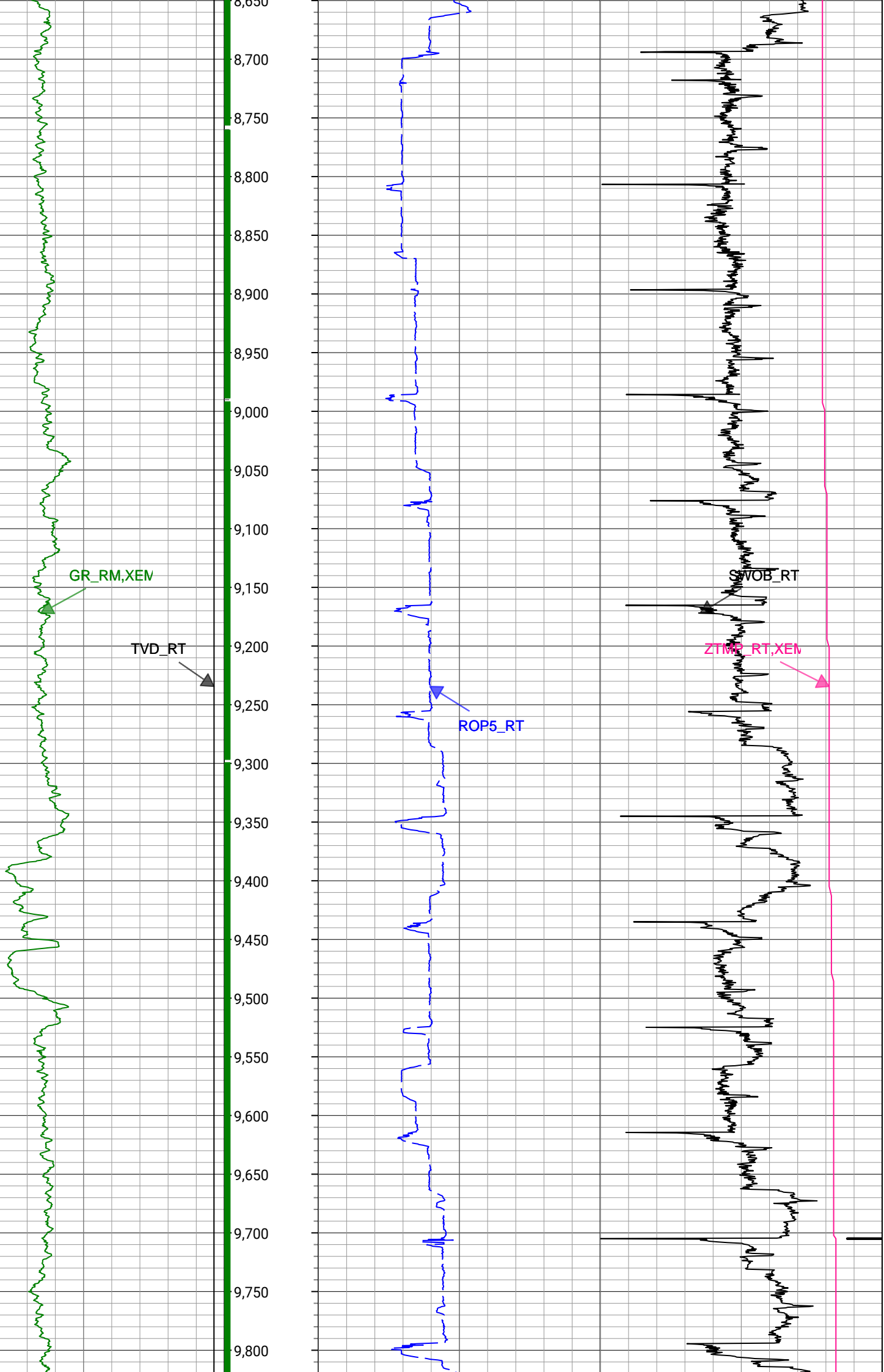


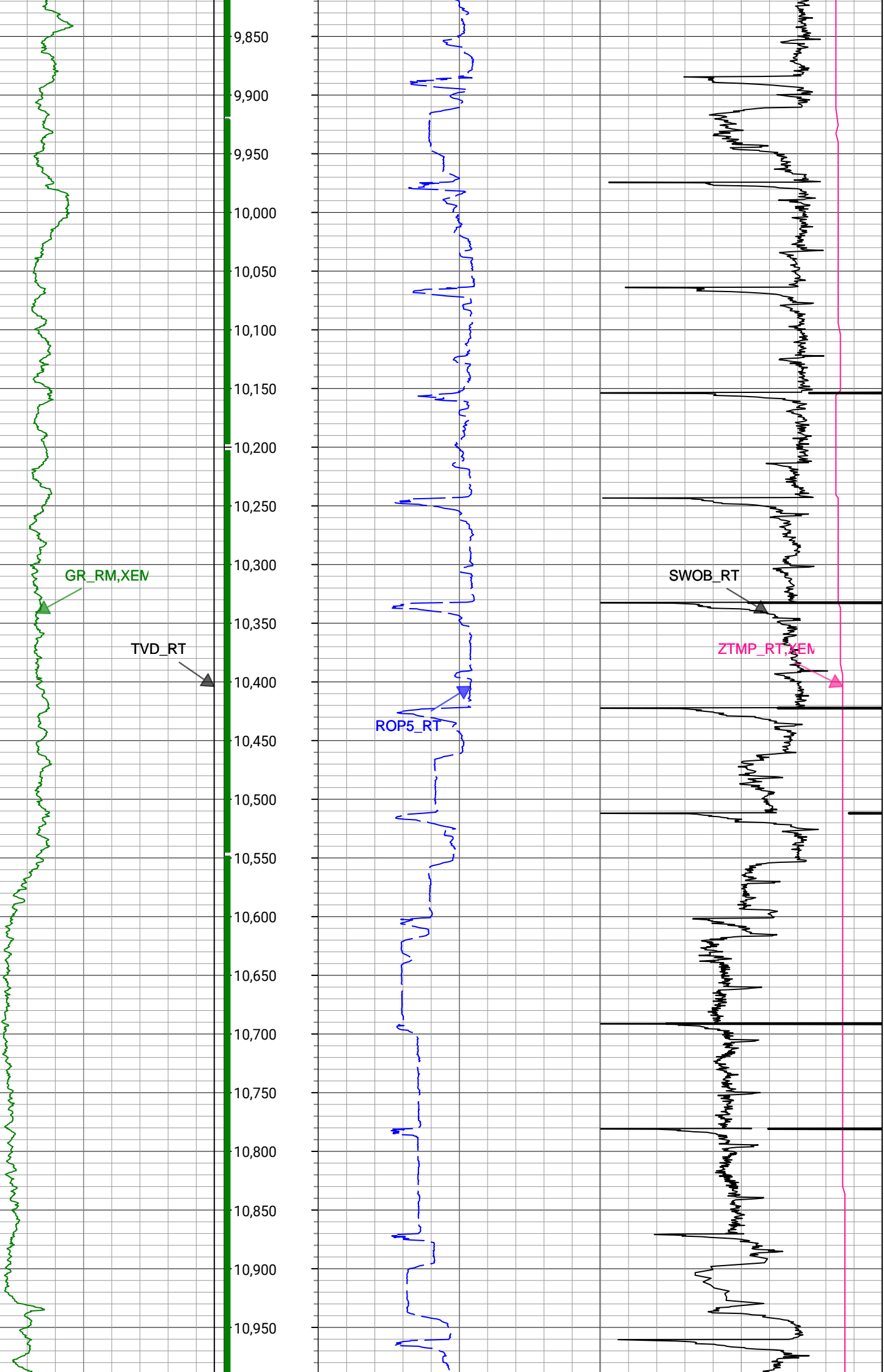


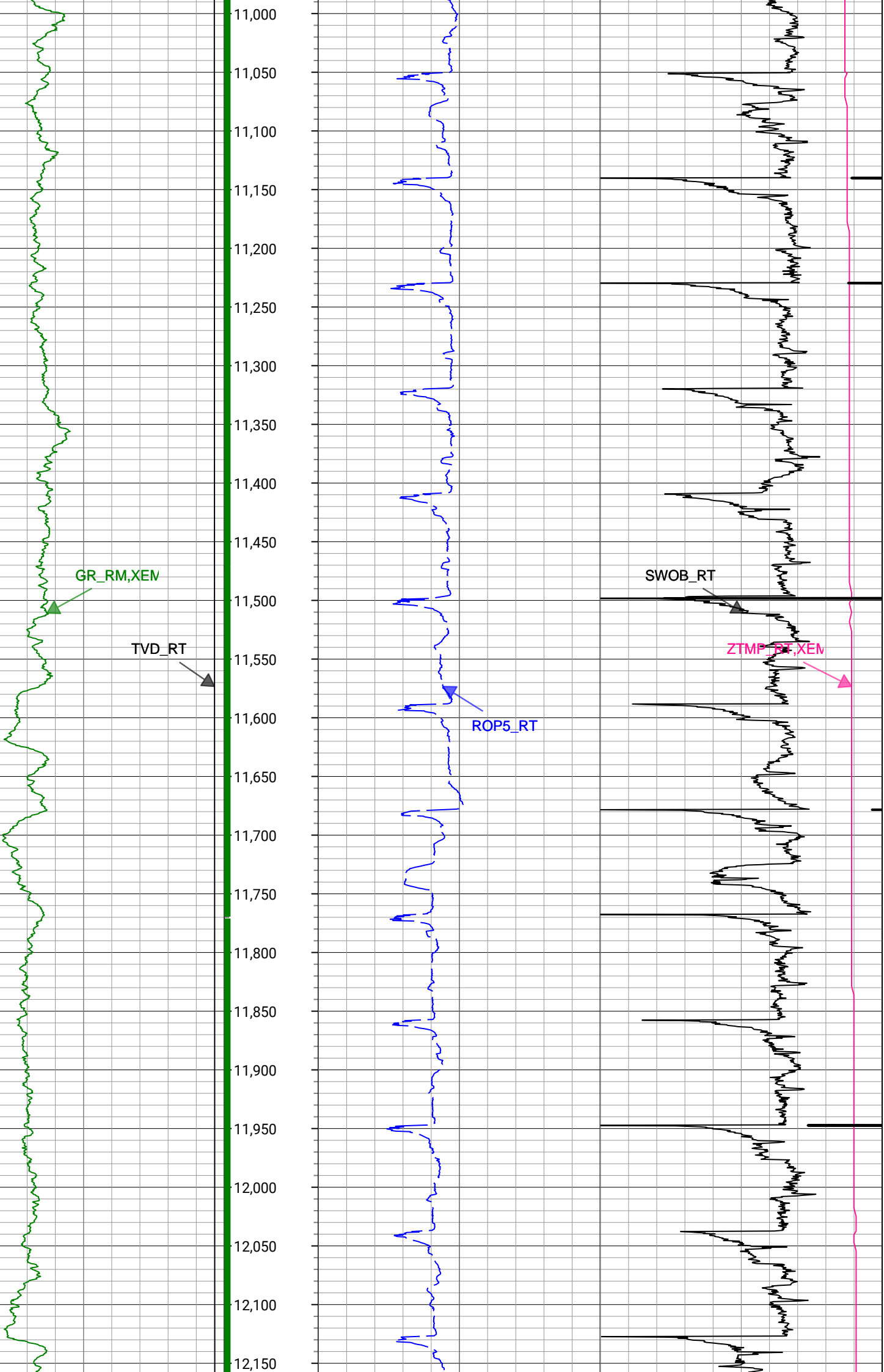


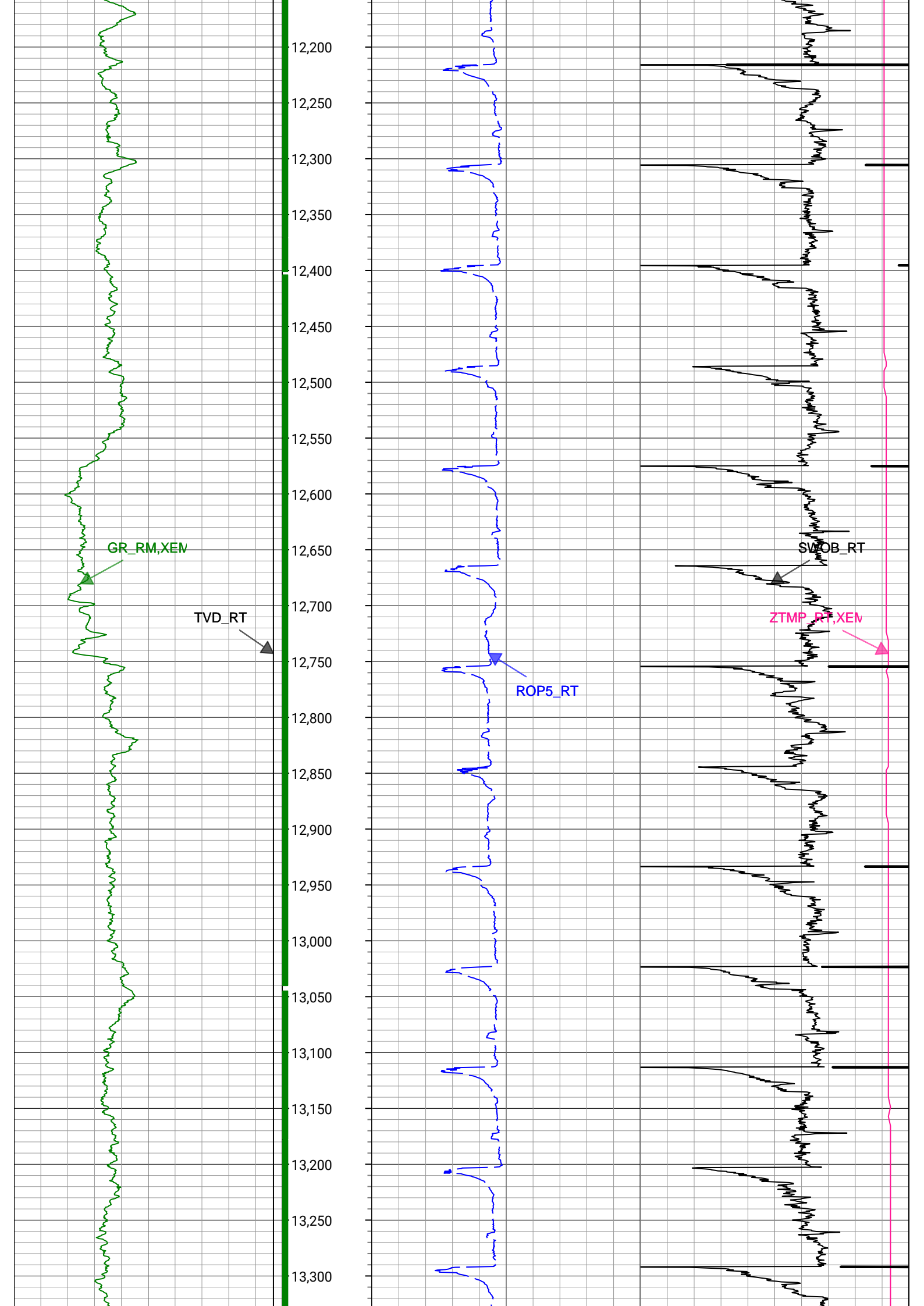


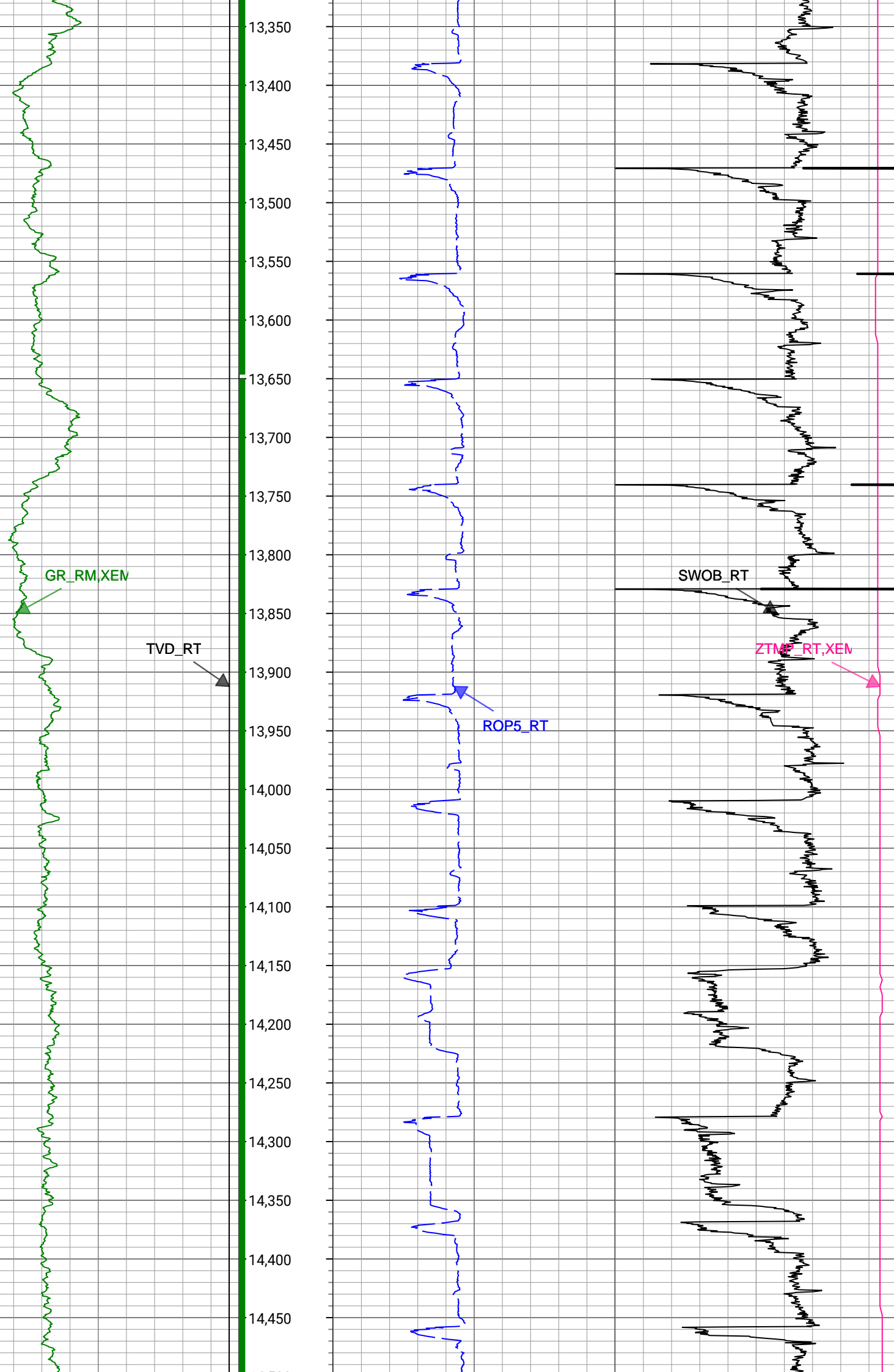


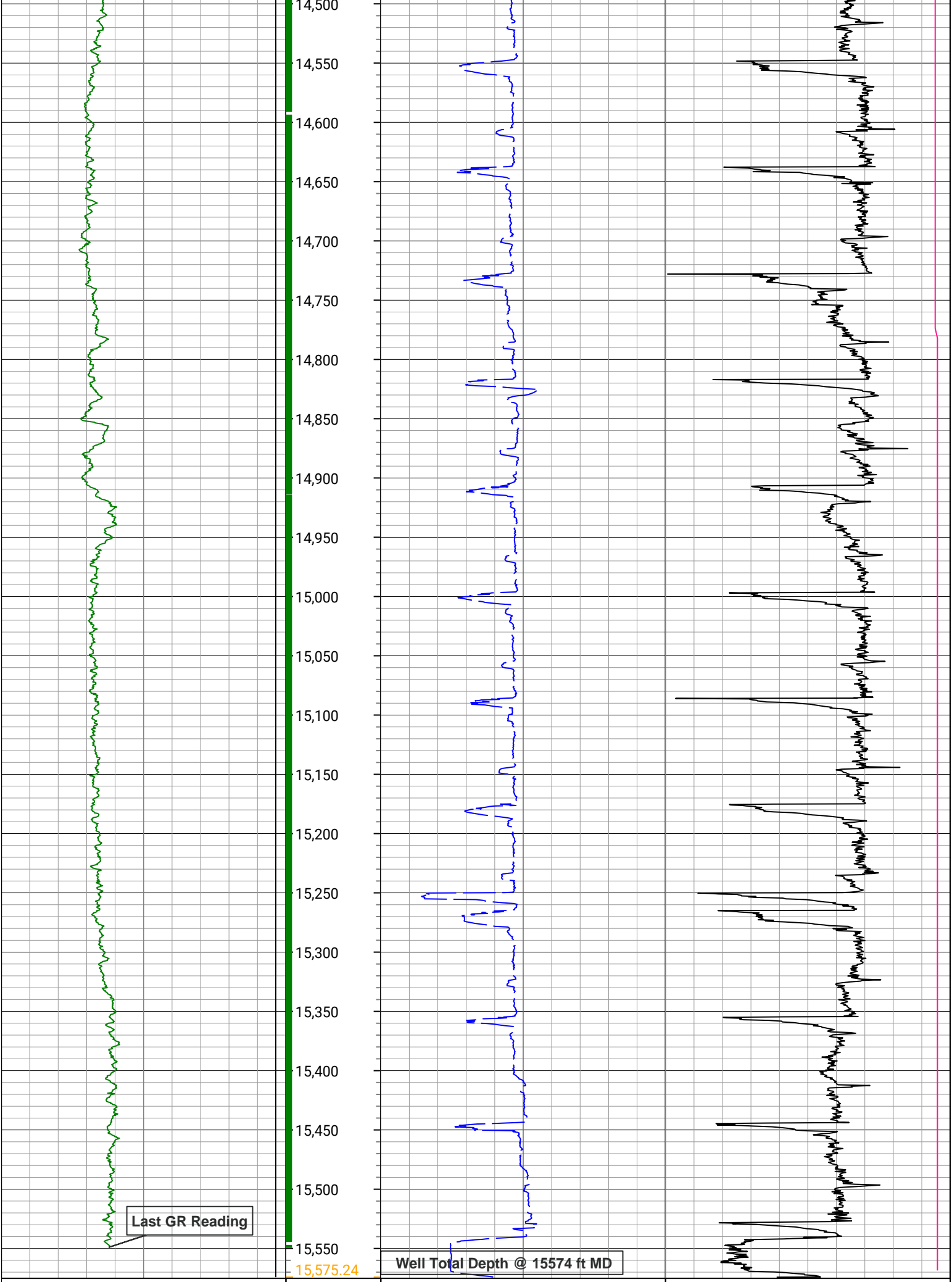












1,500	TVD_RT	7,500
ft, Borehole		
0	GR_RM,XEM	300
gAPI Borehole		

0	ROP5_RT	1,000
ft/h, Borehole		

0	ZTMP_RT,XEM	300
degF, Borehole		
0	SWOB_RT	50
1000 lbf Borehole		

Survey Record

Survey Calculation

North Reference: True North

Tie In Point

Measured Depth: 0(ft) Inclination: 0(deg) Azimuth: 0(deg)
 True Vertical Depth: 0(ft) North Displacement: 0(ft) East Displacement: 0(ft)

D&I Inits - Run - 1

Geomagnetic Model: HDGM 2021 Geomagnetic Date: 27-Jun-2021 17:00:00
 Location B: 51766(nT) Location G: 998.997(mgn)
 Magnetic Dip: 66.55(deg) Magnetic Dec: 7.85(deg)
 Total Correction: 7.85

MD(ft)	Incl(deg)	Azim(deg)	TVD(ft)	V Sec(ft)	N/-S(ft)	E/-W(ft)	DLS (deg/100ft)	Closure Distance (ft)	Closure Azimuth (deg)	Tool Type
0	0	0	0	0.00	0	0	0.00			TIP
154	0.18	28.02	154	0.19	0.21	0.11	0.12	0.24	28.02	MWD
246	0.18	274.46	246	0.34	0.35	0.04	0.33	0.35	6.07	MWD
337	0.62	348.64	337	0.87	0.85	-0.2	0.66	0.87	346.57	MWD
457	0.35	325.09	456.99	1.85	1.78	-0.54	0.28	1.86	343.16	MWD
546	0.26	336.87	545.99	2.3	2.19	-0.77	0.12	2.32	340.54	MWD
635	0.53	351.81	634.99	2.91	2.79	-0.91	0.32	2.93	341.86	MWD
724	1.49	279.03	723.98	3.71	3.37	-2.11	1.6	3.98	327.93	MWD
813	2.11	237.9	812.94	3.52	2.69	-4.64	1.56	5.37	300.03	MWD
903	3.52	224.02	902.83	1.34	-0.18	-7.97	1.73	7.97	268.69	MWD
992	4.66	239.13	991.6	-1.46	-4	-12.97	1.75	13.57	252.85	MWD
1077	5.72	234.91	1076.25	-4.36	-8.21	-19.4	1.32	21.07	247.06	MWD
1168	6.86	232.8	1166.7	-8.62	-14.1	-27.44	1.28	30.85	242.8	MWD
1257	8.62	234.74	1254.89	-13.71	-21.17	-37.12	2	42.73	240.31	MWD
1346	9.67	231.75	1342.76	-19.88	-29.64	-48.44	1.29	56.79	238.53	MWD
1436	11.17	231.22	1431.27	-27.41	-39.78	-61.17	1.67	72.97	236.96	MWD
1526	11.87	235.09	1519.46	-35.23	-50.54	-75.56	1.16	90.9	236.22	MWD
1638	13.72	235.27	1628.67	-45.25	-64.7	-95.92	1.65	115.7	236	MWD
1792	12.6	234.85	1778.62	-59.48	-84.78	-124.66	0.73	150.76	235.78	Manual
1881	11.62	232.72	1865.64	-67.43	-95.8	-139.73	1.21	169.42	235.57	Manual
1971	14.16	236.85	1953.37	-75.6	-107.31	-156.17	3	189.48	235.51	Manual
2060	14.38	234.17	2039.63	-84.35	-119.73	-174.24	0.78	211.41	235.5	Manual
2150	17.21	234.63	2126.22	-94.55	-133.98	-194.16	3.15	235.9	235.39	Manual
2239	16.91	232.57	2211.3	-105.75	-149.47	-215.18	0.76	262	235.21	Manual
2329	17.48	236.92	2297.28	-116.67	-164.81	-236.9	1.56	288.58	235.17	Manual
2420	17.93	239.36	2383.97	-126.52	-179.4	-260.4	0.95	316.22	235.44	Manual
2509	16.96	233.02	2468.89	-136.82	-194.2	-282.56	2.4	342.86	235.5	Manual
2598	17.64	237.34	2553.86	-147.5	-209.28	-304.28	1.63	369.31	235.48	Manual
2688	17.01	233.34	2639.78	-158.24	-224.5	-326.33	1.5	396.09	235.47	Manual
2778	17.29	235.05	2725.78	-169.38	-240.02	-347.85	0.64	422.62	235.39	Manual
2867	17.7	237.34	2810.67	-179.75	-254.9	-370.08	0.9	449.37	235.44	Manual
2957	17.77	238.97	2896.39	-189.51	-269.36	-393.37	0.56	476.75	235.6	Manual
3047	17.84	236.55	2982.08	-199.49	-284.04	-416.64	0.83	504.25	235.72	Manual

3137	17.34	234.46	3067.87	-210.33	-299.44	-439.06	0.89	531.44	235.71	Manual
3227	17.42	236.7	3153.76	-221.02	-314.63	-461.23	0.75	558.32	235.7	Manual
3317	17.16	235.53	3239.7	-231.43	-329.54	-483.43	0.48	585.07	235.72	Manual
3407	17.31	236.71	3325.66	-241.81	-344.41	-505.57	0.42	611.73	235.74	Manual
3496	16.8	236.9	3410.74	-251.68	-358.7	-527.42	0.58	637.83	235.78	Manual
3586	17.34	236.38	3496.78	-261.74	-373.23	-549.48	0.62	664.25	235.81	Manual
3676	17.49	240.16	3582.65	-271.27	-387.38	-572.38	1.27	691.15	235.91	Manual
3766	17.52	238.35	3668.49	-280.42	-401.22	-595.64	0.61	718.17	236.04	Manual
3856	16.71	233.86	3754.51	-290.71	-415.96	-617.63	1.72	744.64	236.04	Manual
3946	16.97	235.61	3840.65	-301.43	-431.01	-638.91	0.63	770.7	236	Manual
4036	17.75	240.86	3926.55	-310.92	-445.11	-661.74	1.94	797.51	236.07	Manual
4126	18.09	238.86	4012.19	-320.01	-459.02	-685.68	0.78	825.14	236.2	Manual
4215	17.67	239.15	4096.89	-329.37	-473.09	-709.1	0.48	852.43	236.29	Manual
4304	17.85	236.12	4181.65	-339.27	-487.62	-732.02	1.06	879.56	236.33	Manual
4394	17.42	238.47	4267.42	-349.36	-502.35	-754.96	0.92	906.82	236.36	Manual
4483	17.16	236.33	4352.4	-359.1	-516.6	-777.24	0.77	933.26	236.39	Manual
4573	17.22	236.5	4438.38	-369.33	-531.31	-799.4	0.09	959.86	236.39	Manual
4662	17.9	238.71	4523.23	-379.12	-545.69	-822.07	1.07	986.7	236.42	Manual
4752	17.18	236.72	4609.05	-388.97	-560.16	-845	1.04	1013.81	236.46	Manual
4841	17.98	239.24	4693.89	-398.6	-574.4	-867.8	1.24	1040.68	236.5	Manual
4930	17.77	237.28	4778.6	-408.28	-588.77	-891.03	0.72	1067.98	236.54	Manual
5019	17.02	236.91	4863.52	-418.21	-603.22	-913.37	0.85	1094.59	236.56	Manual
5109	16.85	232.99	4949.62	-428.9	-618.27	-934.82	1.28	1120.78	236.52	Manual
5199	17.49	236.13	5035.61	-439.88	-633.66	-956.47	1.25	1147.32	236.48	Manual
5288	16.92	235.95	5120.63	-450.16	-648.36	-978.3	0.64	1173.65	236.47	Manual
5377	16.25	233.14	5205.93	-460.67	-663.08	-999	1.17	1199.03	236.43	Manual
5467	16.45	236.17	5292.29	-471.11	-677.73	-1019.66	0.97	1224.34	236.39	Manual
5557	16.01	235.8	5378.71	-480.96	-691.8	-1040.51	0.5	1249.5	236.38	Manual
5647	16.18	236.25	5465.18	-490.7	-705.74	-1061.2	0.23	1274.45	236.37	Manual
5736	16.51	235.6	5550.58	-500.53	-719.78	-1081.94	0.42	1299.49	236.37	Manual
5826	16.38	234.56	5636.9	-510.87	-734.36	-1102.83	0.36	1324.96	236.34	Manual
5916	15.84	235.06	5723.36	-521.11	-748.75	-1123.24	0.62	1349.93	236.31	Manual
6005	15.76	232.13	5809	-531.51	-763.13	-1142.74	0.9	1374.13	236.26	Manual
6095	15.78	232.08	5895.62	-542.58	-778.15	-1162.04	0.03	1398.52	236.19	Manual
6185	16.52	234.88	5982.06	-553.36	-793.04	-1182.16	1.19	1423.52	236.14	Manual
6274	15.36	233.02	6067.64	-563.7	-807.41	-1201.93	1.42	1447.94	236.11	Manual
6364	16.15	232.65	6154.26	-574.48	-822.17	-1221.4	0.88	1472.34	236.05	Manual
6453	15.46	231.9	6239.89	-585.39	-837	-1240.58	0.81	1496.53	235.99	Manual
6543	15.87	233.73	6326.55	-596.12	-851.68	-1259.94	0.71	1520.79	235.94	Manual
6633	16.17	234.74	6413.06	-606.53	-866.2	-1280.09	0.45	1545.62	235.92	Manual
6723	15.51	249.63	6499.68	-613.64	-877.62	-1301.62	4.56	1569.85	236.01	Manual
6812	13.47	289.87	6586.05	-610.26	-878.25	-1322.57	11.3	1587.61	236.41	Manual
6902	17.75	317.16	6672.83	-593.2	-864.6	-1341.79	9.32	1596.23	237.2	Manual
6992	22.64	322.02	6757.28	-566.1	-840.87	-1361.8	5.74	1600.48	238.31	Manual
7082	27.23	330.03	6838.89	-531.17	-809.35	-1382.76	6.32	1602.21	239.66	Manual
7172	33.21	342.15	6916.69	-487.15	-767.98	-1400.63	9.46	1597.36	241.26	Manual
7261	40.16	347.55	6988.04	-434.18	-716.68	-1414.31	8.6	1585.53	243.13	Manual
7351	46.82	348.85	7053.3	-372.28	-656.07	-1426.93	7.47	1570.53	245.31	Manual
7440	52.68	350.13	7110.78	-304.39	-589.31	-1439.28	6.67	1555.25	247.73	Manual
7530	58.32	349.97	7161.74	-230.26	-516.29	-1452.09	6.27	1541.15	250.43	Manual

7619	64.89	350.79	7204.04	-152.03	-439.14	-1465.15	7.43	1529.55	253.32	Manual
7708	73.06	354.47	7235.95	-69.22	-356.83	-1475.73	9.96	1518.25	256.41	Manual
7798	79.52	356.79	7257.27	17.58	-269.69	-1482.36	7.6	1506.69	259.69	Manual
7888	84.67	359.36	7269.65	105.58	-180.64	-1485.34	6.38	1496.28	263.07	Manual
7977	87.7	359.29	7275.57	192.94	-91.85	-1486.39	3.41	1489.22	266.46	Manual
8067	88.77	358.1	7278.34	281.61	-1.92	-1488.44	1.78	1488.44	269.93	Manual
8156	89.94	358.34	7279.34	369.46	87.03	-1491.2	1.34	1493.74	273.34	Manual
8246	89.65	358.12	7279.67	458.3	176.99	-1493.98	0.4	1504.43	276.76	Manual
8336	90.17	358.04	7279.81	547.18	266.94	-1497	0.58	1520.61	280.11	Manual
8426	90.23	358.44	7279.49	636.01	356.89	-1499.76	0.45	1541.64	283.39	Manual
8515	89.88	358.5	7279.41	723.8	445.86	-1502.14	0.4	1566.91	286.53	Manual
8605	90.19	359.68	7279.35	812.42	535.85	-1503.57	1.36	1596.2	289.62	Manual
8694	90.27	359.47	7279	899.91	624.84	-1504.23	0.25	1628.84	292.56	Manual
8784	90.12	358.9	7278.69	988.5	714.83	-1505.51	0.65	1666.59	295.4	Manual
8874	90.16	359.69	7278.47	1077.05	804.83	-1506.61	0.88	1708.11	298.11	Manual
8964	90.24	0.59	7278.16	1165.36	894.82	-1506.39	1	1752.12	300.71	Manual
9053	90	0.59	7277.97	1252.55	983.82	-1505.48	0.27	1798.43	303.16	Manual
9143	90.18	0.82	7277.83	1340.69	1073.81	-1504.37	0.32	1848.3	305.52	Manual
9233	89.93	0.01	7277.74	1428.91	1163.81	-1503.72	0.94	1901.48	307.74	Manual
9322	89.97	0.57	7277.82	1516.19	1252.81	-1503.27	0.63	1956.87	309.81	Manual
9412	90.23	0.49	7277.66	1604.38	1342.8	-1502.43	0.3	2015.05	311.79	Manual
9502	90.19	0.47	7277.33	1692.59	1432.8	-1501.68	0.05	2075.56	313.66	Manual
9592	90.21	0.36	7277.02	1780.82	1522.8	-1501.03	0.12	2138.22	315.41	Manual
9682	90.21	0.45	7276.69	1869.04	1612.79	-1500.39	0.1	2202.79	317.07	Manual
9771	90.08	1.05	7276.46	1956.18	1701.79	-1499.23	0.69	2267.99	318.62	Manual
9861	90.52	1.17	7275.99	2044.19	1791.77	-1497.48	0.51	2335.14	320.11	Manual
9951	89.78	0.09	7275.76	2132.34	1881.76	-1496.49	1.45	2404.27	321.51	Manual
10041	89.56	1.51	7276.27	2220.44	1971.75	-1495.24	1.6	2474.58	322.83	Manual
10130	89.62	359.5	7276.91	2307.66	2060.74	-1494.45	2.26	2545.59	324.05	Manual
10219	89.33	359.26	7277.73	2395.2	2149.73	-1495.42	0.42	2618.7	325.18	Manual
10309	89.23	359.14	7278.86	2483.78	2239.71	-1496.67	0.17	2693.76	326.25	Manual
10399	89.34	359.56	7279.98	2572.31	2329.7	-1497.69	0.48	2769.58	327.26	Manual
10488	89.4	358.55	7280.96	2659.94	2418.68	-1499.16	1.14	2845.61	328.21	Manual
10578	89.67	359.2	7281.69	2748.61	2508.66	-1500.93	0.78	2923.38	329.11	Manual
10668	89.78	0.97	7282.12	2836.93	2598.65	-1500.8	1.97	3000.9	329.99	Manual
10758	89.78	2.47	7282.47	2924.73	2688.61	-1498.09	1.67	3077.81	330.87	Manual
10848	89.54	2.54	7283	3012.25	2778.52	-1494.16	0.28	3154.79	331.73	Manual
10937	89.74	3.03	7283.56	3098.69	2867.42	-1489.84	0.59	3231.36	332.54	Manual
11027	89.56	2.57	7284.11	3186.1	2957.31	-1485.44	0.55	3309.41	333.33	Manual
11116	89.68	2.46	7284.7	3272.64	3046.22	-1481.53	0.18	3387.39	334.06	Manual
11206	89.31	2.04	7285.49	3360.24	3136.15	-1478	0.62	3466.97	334.77	Manual
11295	89.68	0.97	7286.28	3447.13	3225.11	-1475.66	1.27	3546.68	335.41	Manual
11385	89.52	0.42	7286.91	3535.27	3315.1	-1474.57	0.64	3628.26	336.02	Manual
11475	89.79	0.41	7287.45	3623.49	3405.1	-1473.92	0.3	3710.41	336.59	Manual
11564	89.48	0.28	7288.02	3710.76	3494.09	-1473.38	0.38	3792.04	337.14	Manual
11654	89.29	0.04	7288.98	3799.06	3584.09	-1473.13	0.34	3875.02	337.66	Manual
11744	89.52	359.43	7289.92	3887.48	3674.08	-1473.55	0.72	3958.56	338.15	Manual
11833	89.44	358.76	7290.72	3975.11	3763.07	-1474.96	0.76	4041.8	338.6	Manual
11922	89.78	358.72	7291.33	4062.83	3852.04	-1476.91	0.38	4125.47	339.02	Manual

12012	89.78	358.62	7291.68	4151.55	3942.02	-1479	0.11	4210.34	339.43	Manual
12102	89.09	358.99	7292.56	4240.24	4031.99	-1480.88	0.87	4295.34	339.83	Manual
12191	89.46	0.55	7293.69	4327.67	4120.98	-1481.24	1.8	4379.1	340.23	Manual
12280	89.69	1.61	7294.35	4414.7	4209.96	-1479.56	1.22	4462.38	340.64	Manual
12370	89.38	1.99	7295.08	4502.47	4299.91	-1476.73	0.54	4546.43	341.05	Manual
12459	89.78	2.02	7295.73	4589.19	4388.86	-1473.62	0.45	4629.65	341.44	Manual
12550	89.45	1.1	7296.34	4678.01	4479.82	-1471.14	1.07	4715.19	341.82	Manual
12639	89.6	1.94	7297.08	4764.9	4568.79	-1468.78	0.96	4799.07	342.18	Manual
12728	89.74	1.89	7297.59	4851.65	4657.73	-1465.8	0.17	4882.94	342.53	Manual
12818	89.58	2.02	7298.13	4939.37	4747.68	-1462.73	0.23	4967.9	342.88	Manual
12908	89.95	1.44	7298.5	5027.16	4837.64	-1460.02	0.76	5053.16	343.21	Manual
12998	90.03	1.27	7298.51	5115.09	4927.61	-1457.89	0.21	5138.76	343.52	Manual
13087	89.9	359.99	7298.57	5202.26	5016.61	-1456.91	1.45	5223.88	343.81	Manual
13177	89.86	0.35	7298.76	5290.56	5106.6	-1456.64	0.4	5310.29	344.08	Manual
13266	90.24	0.62	7298.68	5377.79	5195.6	-1455.89	0.52	5395.73	344.35	Manual
13355	90.86	0.68	7297.82	5464.96	5284.59	-1454.88	0.7	5481.2	344.61	Manual
13445	90.89	0.32	7296.45	5553.14	5374.58	-1454.1	0.4	5567.81	344.86	Manual
13534	90.91	0.32	7295.05	5640.41	5463.56	-1453.6	0.02	5653.63	345.1	Manual
13624	90.31	359.77	7294.09	5728.74	5553.56	-1453.53	0.9	5740.62	345.33	Manual
13714	90.71	0.04	7293.29	5817.12	5643.55	-1453.68	0.54	5827.77	345.56	Manual
13803	90.97	0.15	7291.99	5904.45	5732.54	-1453.53	0.32	5913.95	345.77	Manual
13893	90.36	0.23	7290.94	5992.74	5822.54	-1453.23	0.68	6001.15	345.99	Manual
13982	90.59	0.17	7290.21	6080.05	5911.53	-1452.92	0.27	6087.46	346.19	Manual
14072	90.68	0.85	7289.21	6168.24	6001.52	-1452.12	0.76	6174.7	346.4	Manual
14162	90.45	0.72	7288.32	6256.34	6091.51	-1450.89	0.29	6261.92	346.6	Manual
14252	90.48	0.62	7287.59	6344.49	6181.5	-1449.83	0.12	6349.25	346.8	Manual
14341	90.68	0.39	7286.69	6431.7	6270.49	-1449.05	0.34	6435.75	346.99	Manual
14431	89.98	359.61	7286.17	6520.05	6360.49	-1449.05	1.16	6523.47	347.17	Manual
14521	89.79	359.71	7286.35	6608.5	6450.49	-1449.58	0.24	6611.36	347.33	Manual
14611	90.08	359.73	7286.45	6696.94	6540.49	-1450.02	0.32	6699.3	347.5	Manual
14700	89.94	0	7286.44	6784.35	6629.49	-1450.23	0.34	6786.26	347.66	Manual
14789	90.18	0.11	7286.34	6871.7	6718.49	-1450.15	0.3	6873.21	347.82	Manual
14879	90.04	0.02	7286.17	6960.03	6808.49	-1450.05	0.18	6961.19	347.98	Manual
14969	89.86	359.89	7286.25	7048.4	6898.49	-1450.12	0.25	7049.25	348.13	Manual
15059	90.04	0.01	7286.33	7136.77	6988.49	-1450.2	0.24	7137.37	348.28	Manual
15148	89.93	359.89	7286.35	7224.15	7077.49	-1450.27	0.18	7224.55	348.42	Manual
15237	90.2	0.12	7286.25	7311.52	7166.49	-1450.26	0.4	7311.76	348.56	Manual
15328	90.49	0.62	7285.7	7400.74	7257.48	-1449.68	0.64	7400.85	348.7	Manual
15417	89.93	359.64	7285.38	7488.07	7346.48	-1449.48	1.27	7488.11	348.84	Manual
15506	89.75	358.39	7285.63	7575.72	7435.47	-1451.01	1.42	7575.72	348.96	Manual
15552	89.74	359.04	7285.83	7621.06	7481.45	-1452.04	1.41	7621.06	349.02	Manual
15574	89.74	359.04	7285.93	7642.72	7503.45	-1452.41	0	7642.72	349.05	Manual

Company: PDC Energy Inc
Well: Vega 4N
Field Name: Wattenberg
Country Name: United States
State Name: Colorado
County Name: Weld

XEM GAMMA RAY

Schlumberger

1in/100ft Measured Depth
Final Print
Recorded Mode