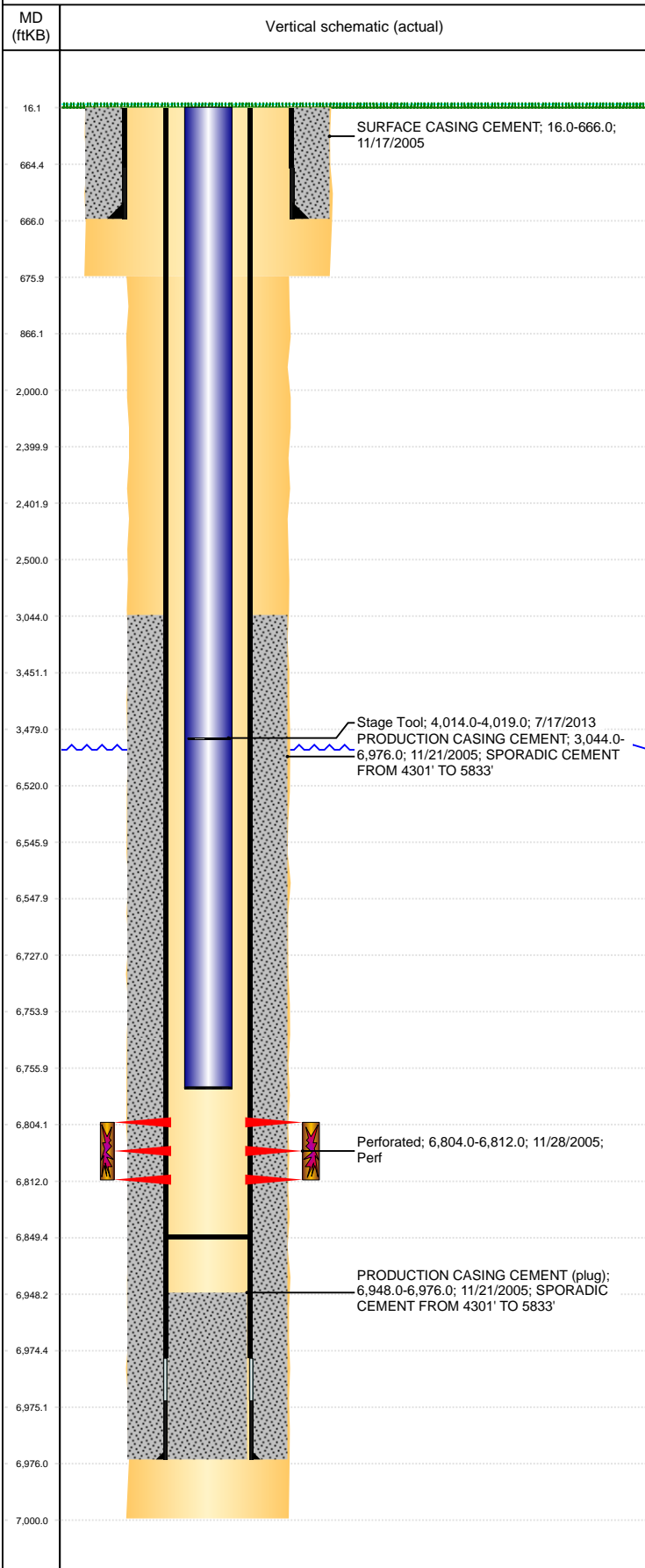


Well Name: HOFFNER 13-35

VERTICAL, ORIGINAL HOLE, 9/10/2021 12:10:59 PM



Well Header									
API 05-123-22813		Business Unit DJ BASIN			District 15		Well Config VERTICAL		
KB - GL / MSL (ft... 16.00		Spud Date 11/16/2005		P & A Date		Well Production Status TA (AT SURFACE)			SoRT No
Comment									
Surface Location (Congressional)									
Qtr 3 NW	Qtr 4 SW	Section 35	Twnshp 6	Twnsh... N	Range 64	Rng E/... W	Actual Latitude (°) 40.44158939	Actual Longitude (°) -104.52513185	
Wellbore Sections									
Section Des			Size (in)			Act Top, MD (ftKB)		Act Btm, MD (ftKB)	
SURFACE			12 1/4			16		676	
PRODUCTION			7 7/8			676		7,000	
Casing Strings									
Csg Des			Run Date		OD (in)	Wt/Len (lb/ft)	Grade	Top, MD (ftKB)	MD (ftKB)
Surface			11/17/2005		8 5/8	24.00		16.0	666.0
Production			11/21/2005		4 1/2	11.60		16.0	6,976.0
Cement									
Des					Start Date		Top (ftKB)		Btm (ftKB)
SURFACE CASING CEMENT					11/17/2005		16.0		666.0
PRODUCTION CASING CEMENT					11/21/2005		3,044.0		6,976.0
Zone Statuses									
Zone Name	Status Date	Status	Fluid Type	Job				Prod Method	
CODELL	4/14/2010	PR	Water					Flowing	
CODELL	10/16/2013	PR							
Perforation Data									
Linked Zone			Bnch/Stg	Entered Shot Total	Top (ftKB)		Btm (ftKB)		Date
CODELL, ORIGINAL HOLE					6,804.00		6,812.00		11/28/2005
Stimulation Intervals									
Zone					Start Date		Top (ftKB)		Btm (ftKB)
CODELL, ORIGINAL HOLE					11/29/2005		6,804.0		6,812.0
Other In Hole									
Run Date		Des			Make		OD (in)	Top (ftKB)	Btm (ftKB)
Logs									
Date		Type					Top, MD (ftKB)		Btm, MD (ftKB)
11/21/2005		INDUCTION					666.0		6,991.0
11/28/2005		CBL/CCL/GR					2,900.0		6,943.0
2/1/2016		GYRO					0.0		6,700.0
Plug Back Total Depths									
Date		Type			Com				Depth (ftKB)
11/28/2005		FILL			DEPTH LOGGER ON CBL				6,948.0
10/25/2006		FILL			MOST RECENT TAG				6,849.5