

***D90 ENERGY LLC***

## **D90 Energy, LLC**

**Jackson County, Colorado  
Sec 32, T7N, R80W, 6th PM  
SU Spicer 0680 1-5H17**

**Wellbore #1**

**Plan: Prelim #1**

## **KLX Well Planning Report**

**12 August, 2021**



D90 Energy, LLC  
Jackson County, Colorado  
Sec 32, T7N, R80W, 6th PM  
SU Spicer 0680 1-5H17  
Prelim #1  
26' kb

#### ANNOTATIONS

MD	Inc	Azi	TVD	+N/-S	+E/-W	VSec	Departure	Annotation
2600.0	0.00	0.00	2600.0	0.0	0.0	0.0	0.0	Build 2°/100'
3599.8	20.00	216.99	3579.7	-138.0	-103.9	140.1	172.7	EOB @ 20.00° Inc. / 216.99° Azm
4737.6	20.00	216.99	4648.8	-448.7	-338.0	455.7	561.8	Drop 2°/100'
5737.4	0.00	0.00	5628.5	-586.7	-441.9	595.8	734.5	EOD @ Vert.
6305.9	0.00	0.00	6197.0	-586.7	-441.9	595.8	734.5	Build 10°/100'
7205.9	90.00	192.20	6770.0	-1146.7	-563.0	1158.3	1307.5	EOB @ 90.00° Inc. / 192.20° Azm
9739.2	90.00	192.20	6770.0	-3622.8	-1098.3	3645.0	3840.7	Turn 2°/100'
10289.3	90.00	181.20	6770.0	-4168.3	-1162.4	4191.7	4390.8	EOT @ 90.00° Inc. / 181.20° Azm
20601.8	90.00	181.20	6770.0	-14478.5	-1378.0	14504.2	14703.3	TD @ 20601.8' MD / 6770.0' TVD

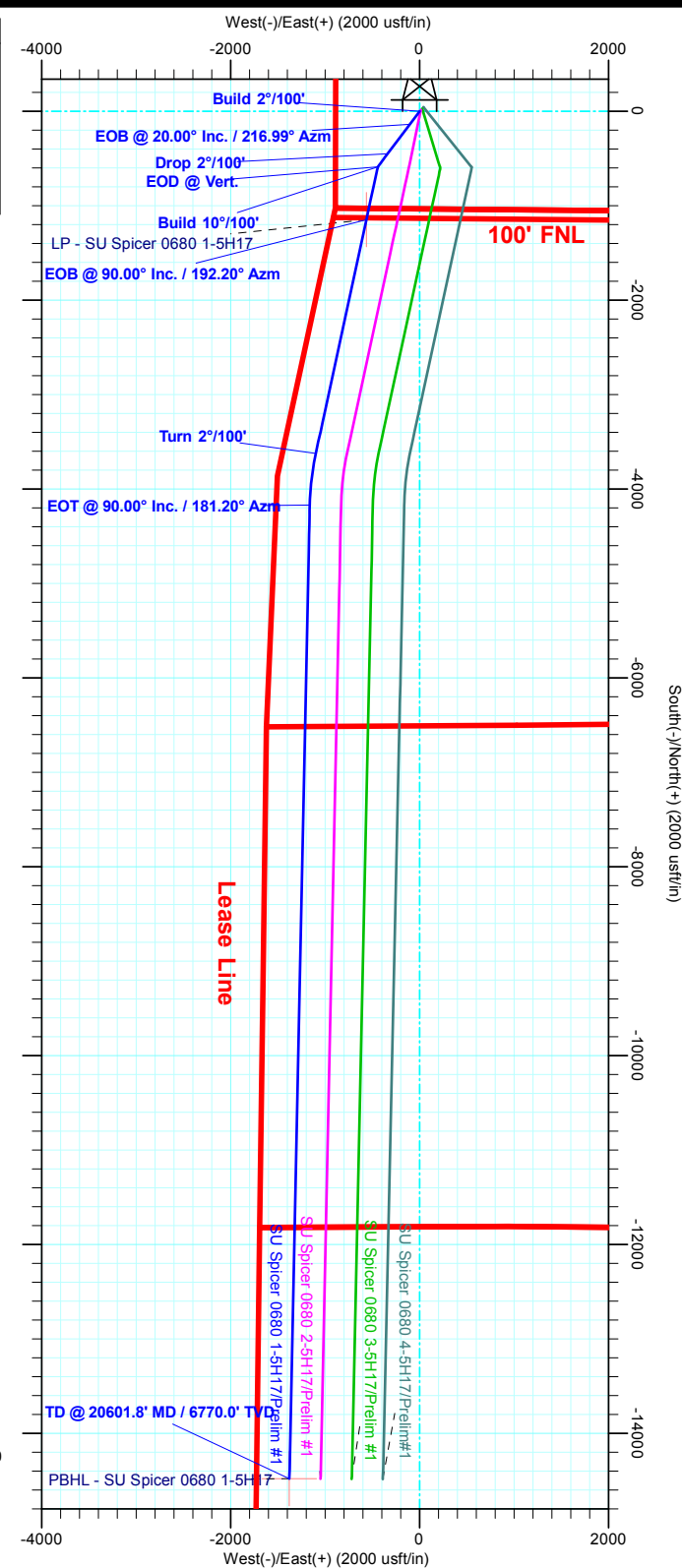
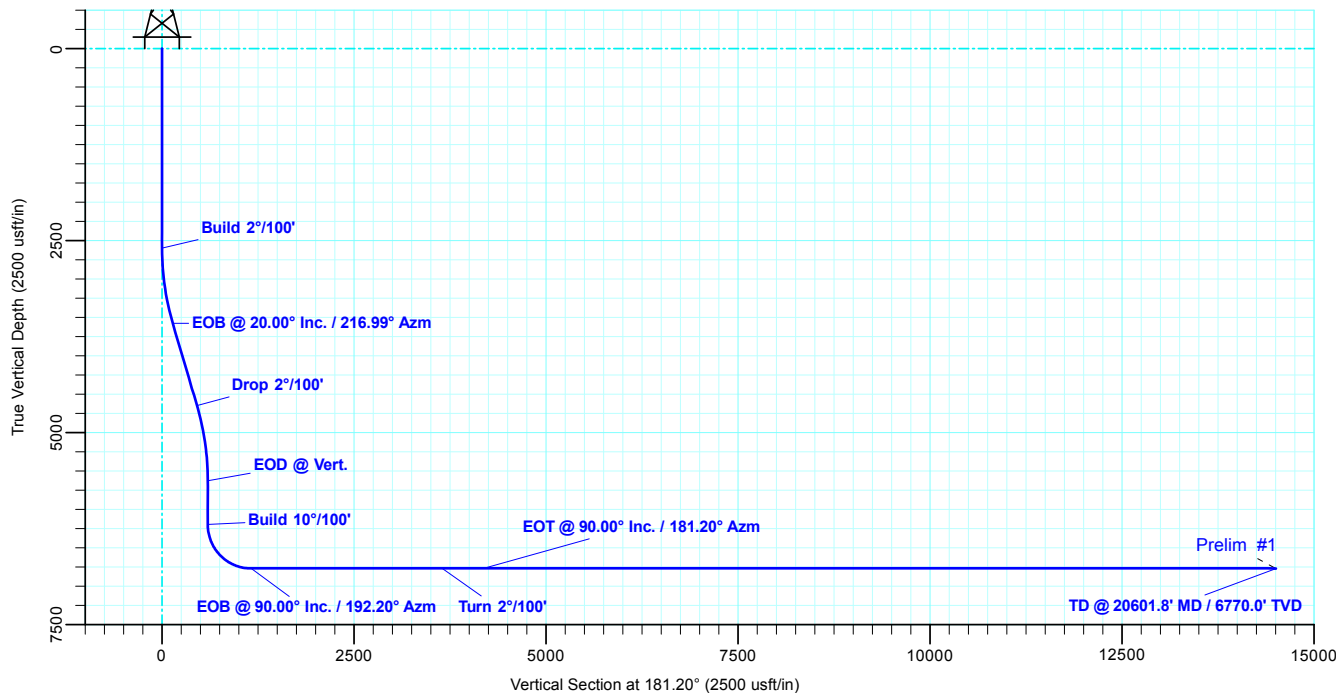
#### PROJECT DETAILS: Jackson County, Colorado

Geodetic System: US State Plane 1983  
Datum: North American Datum 1983  
Ellipsoid: GRS 1980  
Zone: Colorado Northern Zone  
System Datum: Mean Sea Level

#### WELL DETAILS: SU Spicer 0680 1-5H17

		8213.7			
+N/-S	+E/-W	Northing	Easting	Latitude	Longitude
0.0	0.0	1436991.90	2748722.10	40.529427	-106.403962

D90 ENERGY LLC





KLX  
Well Planning Report



<b>Database:</b>	EDM 5000.1 Single User Db	<b>Local Co-ordinate Reference:</b>	Well SU Spicer 0680 1-5H17
<b>Company:</b>	D90 Energy, LLC	<b>TVD Reference:</b>	RKB @ 8239.7usft (26' kb)
<b>Project:</b>	Jackson County, Colorado	<b>MD Reference:</b>	RKB @ 8239.7usft (26' kb)
<b>Site:</b>	Sec 32, T7N, R80W, 6th PM	<b>North Reference:</b>	Grid
<b>Well:</b>	SU Spicer 0680 1-5H17	<b>Survey Calculation Method:</b>	Minimum Curvature
<b>Wellbore:</b>	Wellbore #1		
<b>Design:</b>	Prelim #1		

<b>Project</b>	Jackson County, Colorado		
<b>Map System:</b>	US State Plane 1983	<b>System Datum:</b>	Mean Sea Level
<b>Geo Datum:</b>	North American Datum 1983		
<b>Map Zone:</b>	Colorado Northern Zone		

<b>Site</b>	Sec 32, T7N, R80W, 6th PM		
<b>Site Position:</b>		<b>Northing:</b>	1,437,036.34 usft
<b>From:</b>	Map	<b>Easting:</b>	2,748,762.37 usft
<b>Position Uncertainty:</b>	0.0 usft	<b>Slot Radius:</b>	13-3/16 "
		<b>Latitude:</b>	40.529551
		<b>Longitude:</b>	-106.403820
		<b>Grid Convergence:</b>	-0.58 °

<b>Well</b>	SU Spicer 0680 1-5H17		
<b>Well Position</b>	<b>+N/-S</b>	-44.4 usft	<b>Northing:</b> 1,436,991.90 usft
	<b>+E/-W</b>	-40.3 usft	<b>Easting:</b> 2,748,722.10 usft
<b>Position Uncertainty</b>	0.0 usft	<b>Wellhead Elevation:</b>	<b>Latitude:</b> 40.529428
			<b>Longitude:</b> -106.403963
			<b>Ground Level:</b> 8,213.7 usft

<b>Wellbore</b>	Wellbore #1				
<b>Magnetics</b>	<b>Model Name</b>	<b>Sample Date</b>	<b>Declination (°)</b>	<b>Dip Angle (°)</b>	<b>Field Strength (nT)</b>
	HDGM2021	8/12/2021	8.58	66.48	51,815.30000000

<b>Design</b>	Prelim #1			
<b>Audit Notes:</b>				
<b>Version:</b>	<b>Phase:</b>	PLAN	<b>Tie On Depth:</b>	0.0
<b>Vertical Section:</b>	<b>Depth From (TVD) (usft)</b>	<b>+N/-S (usft)</b>	<b>+E/-W (usft)</b>	<b>Direction (°)</b>
	0.0	0.0	0.0	181.20

<b>Plan Sections</b>										
<b>Measured Depth (usft)</b>	<b>Inclination (°)</b>	<b>Azimuth (°)</b>	<b>Vertical Depth (usft)</b>	<b>+N/-S (usft)</b>	<b>+E/-W (usft)</b>	<b>Dogleg Rate (°/100usft)</b>	<b>Build Rate (°/100usft)</b>	<b>Turn Rate (°/100usft)</b>	<b>TFO (°)</b>	<b>Target</b>
0.0	0.00	0.00	0.0	0.0	0.0	0.00	0.00	0.00	0.00	
2,600.0	0.00	0.00	2,600.0	0.0	0.0	0.00	0.00	0.00	0.00	
3,599.8	20.00	216.99	3,579.7	-138.0	-103.9	2.00	2.00	0.00	216.99	
4,737.6	20.00	216.99	4,648.8	-448.7	-338.0	0.00	0.00	0.00	0.00	
5,737.4	0.00	360.00	5,628.5	-586.7	-441.9	2.00	-2.00	0.00	180.00	
6,305.9	0.00	360.00	6,197.0	-586.7	-441.9	0.00	0.00	0.00	360.00	
7,205.9	90.00	192.20	6,770.0	-1,146.7	-563.0	10.00	10.00	0.00	192.20	
9,739.2	90.00	192.20	6,770.0	-3,622.8	-1,098.3	0.00	0.00	0.00	0.00	
10,289.3	90.00	181.20	6,770.0	-4,168.3	-1,162.4	2.00	0.00	-2.00	-90.00	
20,601.8	90.00	181.20	6,770.0	-14,478.5	-1,378.0	0.00	0.00	0.00	0.00	PBHL - SU Spicer C

<b>Database:</b>	EDM 5000.1 Single User Db	<b>Local Co-ordinate Reference:</b>	Well SU Spicer 0680 1-5H17
<b>Company:</b>	D90 Energy, LLC	<b>TVD Reference:</b>	RKB @ 8239.7usft (26' kb)
<b>Project:</b>	Jackson County, Colorado	<b>MD Reference:</b>	RKB @ 8239.7usft (26' kb)
<b>Site:</b>	Sec 32, T7N, R80W, 6th PM	<b>North Reference:</b>	Grid
<b>Well:</b>	SU Spicer 0680 1-5H17	<b>Survey Calculation Method:</b>	Minimum Curvature
<b>Wellbore:</b>	Wellbore #1		
<b>Design:</b>	Prelim #1		

## Planned Survey

Measured Depth (usft)	Inclination (°)	Azimuth (°)	Vertical Depth (usft)	+N/-S (usft)	+E/-W (usft)	Vertical Section (usft)	Dogleg Rate (°/100usft)	Build Rate (°/100usft)	Turn Rate (°/100usft)
0.0	0.00	0.00	0.0	0.0	0.0	0.0	0.00	0.00	0.00
100.0	0.00	0.00	100.0	0.0	0.0	0.0	0.00	0.00	0.00
200.0	0.00	0.00	200.0	0.0	0.0	0.0	0.00	0.00	0.00
300.0	0.00	0.00	300.0	0.0	0.0	0.0	0.00	0.00	0.00
400.0	0.00	0.00	400.0	0.0	0.0	0.0	0.00	0.00	0.00
500.0	0.00	0.00	500.0	0.0	0.0	0.0	0.00	0.00	0.00
600.0	0.00	0.00	600.0	0.0	0.0	0.0	0.00	0.00	0.00
700.0	0.00	0.00	700.0	0.0	0.0	0.0	0.00	0.00	0.00
800.0	0.00	0.00	800.0	0.0	0.0	0.0	0.00	0.00	0.00
900.0	0.00	0.00	900.0	0.0	0.0	0.0	0.00	0.00	0.00
1,000.0	0.00	0.00	1,000.0	0.0	0.0	0.0	0.00	0.00	0.00
1,100.0	0.00	0.00	1,100.0	0.0	0.0	0.0	0.00	0.00	0.00
1,200.0	0.00	0.00	1,200.0	0.0	0.0	0.0	0.00	0.00	0.00
1,300.0	0.00	0.00	1,300.0	0.0	0.0	0.0	0.00	0.00	0.00
1,400.0	0.00	0.00	1,400.0	0.0	0.0	0.0	0.00	0.00	0.00
1,500.0	0.00	0.00	1,500.0	0.0	0.0	0.0	0.00	0.00	0.00
1,600.0	0.00	0.00	1,600.0	0.0	0.0	0.0	0.00	0.00	0.00
1,700.0	0.00	0.00	1,700.0	0.0	0.0	0.0	0.00	0.00	0.00
1,800.0	0.00	0.00	1,800.0	0.0	0.0	0.0	0.00	0.00	0.00
1,900.0	0.00	0.00	1,900.0	0.0	0.0	0.0	0.00	0.00	0.00
2,000.0	0.00	0.00	2,000.0	0.0	0.0	0.0	0.00	0.00	0.00
2,100.0	0.00	0.00	2,100.0	0.0	0.0	0.0	0.00	0.00	0.00
2,200.0	0.00	0.00	2,200.0	0.0	0.0	0.0	0.00	0.00	0.00
2,300.0	0.00	0.00	2,300.0	0.0	0.0	0.0	0.00	0.00	0.00
2,400.0	0.00	0.00	2,400.0	0.0	0.0	0.0	0.00	0.00	0.00
2,500.0	0.00	0.00	2,500.0	0.0	0.0	0.0	0.00	0.00	0.00
<b>Build 2°/100'</b>									
2,600.0	0.00	0.00	2,600.0	0.0	0.0	0.0	0.00	0.00	0.00
2,700.0	2.00	216.99	2,700.0	-1.4	-1.0	1.4	2.00	2.00	0.00
2,800.0	4.00	216.99	2,799.8	-5.6	-4.2	5.7	2.00	2.00	0.00
2,900.0	6.00	216.99	2,899.5	-12.5	-9.4	12.7	2.00	2.00	0.00
3,000.0	8.00	216.99	2,998.7	-22.3	-16.8	22.6	2.00	2.00	0.00
3,100.0	10.00	216.99	3,097.5	-34.8	-26.2	35.3	2.00	2.00	0.00
3,200.0	12.00	216.99	3,195.6	-50.0	-37.7	50.8	2.00	2.00	0.00
3,300.0	14.00	216.99	3,293.1	-68.0	-51.2	69.0	2.00	2.00	0.00
3,400.0	16.00	216.99	3,389.6	-88.6	-66.8	90.0	2.00	2.00	0.00
3,500.0	18.00	216.99	3,485.3	-112.0	-84.4	113.7	2.00	2.00	0.00
<b>EOB @ 20.00° Inc. / 216.99° Azm</b>									
3,599.8	20.00	216.99	3,579.7	-138.0	-103.9	140.1	2.00	2.00	0.00
3,700.0	20.00	216.99	3,673.8	-165.3	-124.5	167.9	0.00	0.00	0.00
3,800.0	20.00	216.99	3,767.8	-192.6	-145.1	195.6	0.00	0.00	0.00
3,900.0	20.00	216.99	3,861.7	-219.9	-165.7	223.4	0.00	0.00	0.00
4,000.0	20.00	216.99	3,955.7	-247.3	-186.2	251.1	0.00	0.00	0.00
4,100.0	20.00	216.99	4,049.7	-274.6	-206.8	278.8	0.00	0.00	0.00
4,200.0	20.00	216.99	4,143.6	-301.9	-227.4	306.6	0.00	0.00	0.00
4,300.0	20.00	216.99	4,237.6	-329.2	-248.0	334.3	0.00	0.00	0.00
4,400.0	20.00	216.99	4,331.6	-356.5	-268.5	362.1	0.00	0.00	0.00
4,500.0	20.00	216.99	4,425.6	-383.8	-289.1	389.8	0.00	0.00	0.00
4,600.0	20.00	216.99	4,519.5	-411.2	-309.7	417.6	0.00	0.00	0.00
4,700.0	20.00	216.99	4,613.5	-438.5	-330.3	445.3	0.00	0.00	0.00
<b>Drop 2°/100'</b>									
4,737.6	20.00	216.99	4,648.8	-448.7	-338.0	455.7	0.00	0.00	0.00
4,800.0	18.75	216.99	4,707.7	-465.3	-350.4	472.5	2.00	-2.00	0.00

<b>Database:</b>	EDM 5000.1 Single User Db	<b>Local Co-ordinate Reference:</b>	Well SU Spicer 0680 1-5H17
<b>Company:</b>	D90 Energy, LLC	<b>TVD Reference:</b>	RKB @ 8239.7usft (26' kb)
<b>Project:</b>	Jackson County, Colorado	<b>MD Reference:</b>	RKB @ 8239.7usft (26' kb)
<b>Site:</b>	Sec 32, T7N, R80W, 6th PM	<b>North Reference:</b>	Grid
<b>Well:</b>	SU Spicer 0680 1-5H17	<b>Survey Calculation Method:</b>	Minimum Curvature
<b>Wellbore:</b>	Wellbore #1		
<b>Design:</b>	Prelim #1		

## Planned Survey

Measured Depth (usft)	Inclination (°)	Azimuth (°)	Vertical Depth (usft)	+N/-S (usft)	+E/-W (usft)	Vertical Section (usft)	Dogleg Rate (°/100usft)	Build Rate (°/100usft)	Turn Rate (°/100usft)
4,900.0	16.75	216.99	4,802.9	-489.6	-368.8	497.2	2.00	-2.00	0.00
5,000.0	14.75	216.99	4,899.2	-511.3	-385.1	519.3	2.00	-2.00	0.00
5,100.0	12.75	216.99	4,996.3	-530.3	-399.4	538.5	2.00	-2.00	0.00
5,200.0	10.75	216.99	5,094.2	-546.5	-411.7	555.1	2.00	-2.00	0.00
5,300.0	8.75	216.99	5,192.8	-560.1	-421.8	568.8	2.00	-2.00	0.00
5,400.0	6.75	216.99	5,291.8	-570.8	-430.0	579.7	2.00	-2.00	0.00
5,500.0	4.75	216.99	5,391.3	-578.8	-436.0	587.8	2.00	-2.00	0.00
5,600.0	2.75	216.99	5,491.1	-584.1	-439.9	593.2	2.00	-2.00	0.00
5,700.0	0.75	216.99	5,591.1	-586.5	-441.8	595.6	2.00	-2.00	0.00
<b>EOD @ Vert.</b>									
5,737.4	0.00	0.00	5,628.5	-586.7	-441.9	595.8	2.00	-2.00	381.95
5,800.0	0.00	0.00	5,691.1	-586.7	-441.9	595.8	0.00	0.00	0.00
5,900.0	0.00	0.00	5,791.1	-586.7	-441.9	595.8	0.00	0.00	0.00
6,000.0	0.00	0.00	5,891.1	-586.7	-441.9	595.8	0.00	0.00	0.00
6,100.0	0.00	0.00	5,991.1	-586.7	-441.9	595.8	0.00	0.00	0.00
6,200.0	0.00	0.00	6,091.1	-586.7	-441.9	595.8	0.00	0.00	0.00
<b>Build 10°/100'</b>									
6,305.9	0.00	0.00	6,197.0	-586.7	-441.9	595.8	0.00	0.00	0.00
6,350.0	4.41	192.20	6,241.0	-588.4	-442.3	597.5	10.00	10.00	0.00
6,400.0	9.41	192.20	6,290.6	-594.2	-443.5	603.4	10.00	10.00	0.00
6,450.0	14.41	192.20	6,339.5	-604.3	-445.7	613.5	10.00	10.00	0.00
6,500.0	19.41	192.20	6,387.4	-618.5	-448.8	627.8	10.00	10.00	0.00
6,550.0	24.41	192.20	6,433.7	-636.7	-452.7	646.1	10.00	10.00	0.00
6,600.0	29.41	192.20	6,478.3	-658.9	-457.5	668.3	10.00	10.00	0.00
6,650.0	34.41	192.20	6,520.7	-684.7	-463.1	694.2	10.00	10.00	0.00
6,700.0	39.41	192.20	6,560.7	-714.0	-469.4	723.7	10.00	10.00	0.00
6,750.0	44.41	192.20	6,597.9	-746.6	-476.5	756.5	10.00	10.00	0.00
6,800.0	49.41	192.20	6,632.1	-782.3	-484.2	792.3	10.00	10.00	0.00
6,850.0	54.41	192.20	6,662.9	-820.8	-492.5	830.9	10.00	10.00	0.00
6,900.0	59.41	192.20	6,690.2	-861.7	-501.4	872.0	10.00	10.00	0.00
6,950.0	64.41	192.20	6,713.7	-904.8	-510.7	915.3	10.00	10.00	0.00
7,000.0	69.41	192.20	6,733.3	-949.7	-520.4	960.4	10.00	10.00	0.00
7,050.0	74.41	192.20	6,748.9	-996.2	-530.4	1,007.1	10.00	10.00	0.00
7,100.0	79.41	192.20	6,760.2	-1,043.8	-540.7	1,054.9	10.00	10.00	0.00
7,150.0	84.41	192.20	6,767.2	-1,092.1	-551.2	1,103.4	10.00	10.00	0.00
7,200.0	89.41	192.20	6,769.9	-1,140.9	-561.7	1,152.4	10.00	10.00	0.00
<b>EOB @ 90.00° Inc. / 192.20° Azm</b>									
7,205.9	90.00	192.20	6,770.0	-1,146.7	-563.0	1,158.3	10.00	10.00	0.00
7,300.0	90.00	192.20	6,770.0	-1,238.7	-582.9	1,250.6	0.00	0.00	0.00
7,400.0	90.00	192.20	6,770.0	-1,336.4	-604.0	1,348.7	0.00	0.00	0.00
7,500.0	90.00	192.20	6,770.0	-1,434.1	-625.1	1,446.9	0.00	0.00	0.00
7,600.0	90.00	192.20	6,770.0	-1,531.9	-646.3	1,545.1	0.00	0.00	0.00
7,700.0	90.00	192.20	6,770.0	-1,629.6	-667.4	1,643.2	0.00	0.00	0.00
7,800.0	90.00	192.20	6,770.0	-1,727.4	-688.5	1,741.4	0.00	0.00	0.00
7,900.0	90.00	192.20	6,770.0	-1,825.1	-709.7	1,839.6	0.00	0.00	0.00
8,000.0	90.00	192.20	6,770.0	-1,922.8	-730.8	1,937.7	0.00	0.00	0.00
8,100.0	90.00	192.20	6,770.0	-2,020.6	-751.9	2,035.9	0.00	0.00	0.00
8,200.0	90.00	192.20	6,770.0	-2,118.3	-773.0	2,134.1	0.00	0.00	0.00
8,300.0	90.00	192.20	6,770.0	-2,216.1	-794.2	2,232.2	0.00	0.00	0.00
8,400.0	90.00	192.20	6,770.0	-2,313.8	-815.3	2,330.4	0.00	0.00	0.00
8,500.0	90.00	192.20	6,770.0	-2,411.6	-836.4	2,428.5	0.00	0.00	0.00
8,600.0	90.00	192.20	6,770.0	-2,509.3	-857.6	2,526.7	0.00	0.00	0.00
8,700.0	90.00	192.20	6,770.0	-2,607.0	-878.7	2,624.9	0.00	0.00	0.00

<b>Database:</b>	EDM 5000.1 Single User Db	<b>Local Co-ordinate Reference:</b>	Well SU Spicer 0680 1-5H17
<b>Company:</b>	D90 Energy, LLC	<b>TVD Reference:</b>	RKB @ 8239.7usft (26' kb)
<b>Project:</b>	Jackson County, Colorado	<b>MD Reference:</b>	RKB @ 8239.7usft (26' kb)
<b>Site:</b>	Sec 32, T7N, R80W, 6th PM	<b>North Reference:</b>	Grid
<b>Well:</b>	SU Spicer 0680 1-5H17	<b>Survey Calculation Method:</b>	Minimum Curvature
<b>Wellbore:</b>	Wellbore #1		
<b>Design:</b>	Prelim #1		

## Planned Survey

Measured Depth (usft)	Inclination (°)	Azimuth (°)	Vertical Depth (usft)	+N/-S (usft)	+E/-W (usft)	Vertical Section (usft)	Dogleg Rate (°/100usft)	Build Rate (°/100usft)	Turn Rate (°/100usft)
8,800.0	90.00	192.20	6,770.0	-2,704.8	-899.8	2,723.0	0.00	0.00	0.00
8,900.0	90.00	192.20	6,770.0	-2,802.5	-921.0	2,821.2	0.00	0.00	0.00
9,000.0	90.00	192.20	6,770.0	-2,900.3	-942.1	2,919.4	0.00	0.00	0.00
9,100.0	90.00	192.20	6,770.0	-2,998.0	-963.2	3,017.5	0.00	0.00	0.00
9,200.0	90.00	192.20	6,770.0	-3,095.7	-984.4	3,115.7	0.00	0.00	0.00
9,300.0	90.00	192.20	6,770.0	-3,193.5	-1,005.5	3,213.8	0.00	0.00	0.00
9,400.0	90.00	192.20	6,770.0	-3,291.2	-1,026.6	3,312.0	0.00	0.00	0.00
9,500.0	90.00	192.20	6,770.0	-3,389.0	-1,047.8	3,410.2	0.00	0.00	0.00
9,600.0	90.00	192.20	6,770.0	-3,486.7	-1,068.9	3,508.3	0.00	0.00	0.00
9,700.0	90.00	192.20	6,770.0	-3,584.4	-1,090.0	3,606.5	0.00	0.00	0.00
<b>Turn 2°/100'</b>									
9,739.2	90.00	192.20	6,770.0	-3,622.8	-1,098.3	3,645.0	0.00	0.00	0.00
9,800.0	90.00	190.98	6,770.0	-3,682.3	-1,110.5	3,704.8	2.00	0.00	-2.00
9,900.0	90.00	188.98	6,770.0	-3,780.8	-1,127.9	3,803.6	2.00	0.00	-2.00
10,000.0	90.00	186.98	6,770.0	-3,879.8	-1,141.8	3,902.9	2.00	0.00	-2.00
10,100.0	90.00	184.98	6,770.0	-3,979.3	-1,152.2	4,002.5	2.00	0.00	-2.00
10,200.0	90.00	182.98	6,770.0	-4,079.0	-1,159.1	4,102.4	2.00	0.00	-2.00
<b>EOT @ 90.00° Inc. / 181.20° Azm</b>									
10,289.3	90.00	181.20	6,770.0	-4,168.3	-1,162.4	4,191.7	2.00	0.00	-2.00
10,300.0	90.00	181.20	6,770.0	-4,179.0	-1,162.6	4,202.4	0.00	0.00	0.00
10,400.0	90.00	181.20	6,770.0	-4,278.9	-1,164.7	4,302.4	0.00	0.00	0.00
10,500.0	90.00	181.20	6,770.0	-4,378.9	-1,166.8	4,402.4	0.00	0.00	0.00
10,600.0	90.00	181.20	6,770.0	-4,478.9	-1,168.9	4,502.4	0.00	0.00	0.00
10,700.0	90.00	181.20	6,770.0	-4,578.9	-1,171.0	4,602.4	0.00	0.00	0.00
10,800.0	90.00	181.20	6,770.0	-4,678.9	-1,173.1	4,702.4	0.00	0.00	0.00
10,900.0	90.00	181.20	6,770.0	-4,778.8	-1,175.2	4,802.4	0.00	0.00	0.00
11,000.0	90.00	181.20	6,770.0	-4,878.8	-1,177.3	4,902.4	0.00	0.00	0.00
11,100.0	90.00	181.20	6,770.0	-4,978.8	-1,179.4	5,002.4	0.00	0.00	0.00
11,200.0	90.00	181.20	6,770.0	-5,078.8	-1,181.4	5,102.4	0.00	0.00	0.00
11,300.0	90.00	181.20	6,770.0	-5,178.7	-1,183.5	5,202.4	0.00	0.00	0.00
11,400.0	90.00	181.20	6,770.0	-5,278.7	-1,185.6	5,302.4	0.00	0.00	0.00
11,500.0	90.00	181.20	6,770.0	-5,378.7	-1,187.7	5,402.4	0.00	0.00	0.00
11,600.0	90.00	181.20	6,770.0	-5,478.7	-1,189.8	5,502.4	0.00	0.00	0.00
11,700.0	90.00	181.20	6,770.0	-5,578.7	-1,191.9	5,602.4	0.00	0.00	0.00
11,800.0	90.00	181.20	6,770.0	-5,678.6	-1,194.0	5,702.4	0.00	0.00	0.00
11,900.0	90.00	181.20	6,770.0	-5,778.6	-1,196.1	5,802.4	0.00	0.00	0.00
12,000.0	90.00	181.20	6,770.0	-5,878.6	-1,198.2	5,902.4	0.00	0.00	0.00
12,100.0	90.00	181.20	6,770.0	-5,978.6	-1,200.3	6,002.4	0.00	0.00	0.00
12,200.0	90.00	181.20	6,770.0	-6,078.6	-1,202.4	6,102.4	0.00	0.00	0.00
12,300.0	90.00	181.20	6,770.0	-6,178.5	-1,204.4	6,202.4	0.00	0.00	0.00
12,400.0	90.00	181.20	6,770.0	-6,278.5	-1,206.5	6,302.4	0.00	0.00	0.00
12,500.0	90.00	181.20	6,770.0	-6,378.5	-1,208.6	6,402.4	0.00	0.00	0.00
12,600.0	90.00	181.20	6,770.0	-6,478.5	-1,210.7	6,502.4	0.00	0.00	0.00
12,700.0	90.00	181.20	6,770.0	-6,578.4	-1,212.8	6,602.4	0.00	0.00	0.00
12,800.0	90.00	181.20	6,770.0	-6,678.4	-1,214.9	6,702.4	0.00	0.00	0.00
12,900.0	90.00	181.20	6,770.0	-6,778.4	-1,217.0	6,802.4	0.00	0.00	0.00
13,000.0	90.00	181.20	6,770.0	-6,878.4	-1,219.1	6,902.4	0.00	0.00	0.00
13,100.0	90.00	181.20	6,770.0	-6,978.4	-1,221.2	7,002.4	0.00	0.00	0.00
13,200.0	90.00	181.20	6,770.0	-7,078.3	-1,223.3	7,102.4	0.00	0.00	0.00
13,300.0	90.00	181.20	6,770.0	-7,178.3	-1,225.4	7,202.4	0.00	0.00	0.00
13,400.0	90.00	181.20	6,770.0	-7,278.3	-1,227.4	7,302.4	0.00	0.00	0.00
13,500.0	90.00	181.20	6,770.0	-7,378.3	-1,229.5	7,402.4	0.00	0.00	0.00
13,600.0	90.00	181.20	6,770.0	-7,478.2	-1,231.6	7,502.4	0.00	0.00	0.00
13,700.0	90.00	181.20	6,770.0	-7,578.2	-1,233.7	7,602.4	0.00	0.00	0.00

<b>Database:</b>	EDM 5000.1 Single User Db	<b>Local Co-ordinate Reference:</b>	Well SU Spicer 0680 1-5H17
<b>Company:</b>	D90 Energy, LLC	<b>TVD Reference:</b>	RKB @ 8239.7usft (26' kb)
<b>Project:</b>	Jackson County, Colorado	<b>MD Reference:</b>	RKB @ 8239.7usft (26' kb)
<b>Site:</b>	Sec 32, T7N, R80W, 6th PM	<b>North Reference:</b>	Grid
<b>Well:</b>	SU Spicer 0680 1-5H17	<b>Survey Calculation Method:</b>	Minimum Curvature
<b>Wellbore:</b>	Wellbore #1		
<b>Design:</b>	Prelim #1		

Planned Survey									
Measured Depth (usft)	Inclination (°)	Azimuth (°)	Vertical Depth (usft)	+N/-S (usft)	+E/-W (usft)	Vertical Section (usft)	Dogleg Rate (°/100usft)	Build Rate (°/100usft)	Turn Rate (°/100usft)
13,800.0	90.00	181.20	6,770.0	-7,678.2	-1,235.8	7,702.4	0.00	0.00	0.00
13,900.0	90.00	181.20	6,770.0	-7,778.2	-1,237.9	7,802.4	0.00	0.00	0.00
14,000.0	90.00	181.20	6,770.0	-7,878.2	-1,240.0	7,902.4	0.00	0.00	0.00
14,100.0	90.00	181.20	6,770.0	-7,978.1	-1,242.1	8,002.4	0.00	0.00	0.00
14,200.0	90.00	181.20	6,770.0	-8,078.1	-1,244.2	8,102.4	0.00	0.00	0.00
14,300.0	90.00	181.20	6,770.0	-8,178.1	-1,246.3	8,202.4	0.00	0.00	0.00
14,400.0	90.00	181.20	6,770.0	-8,278.1	-1,248.4	8,302.4	0.00	0.00	0.00
14,500.0	90.00	181.20	6,770.0	-8,378.0	-1,250.5	8,402.4	0.00	0.00	0.00
14,600.0	90.00	181.20	6,770.0	-8,478.0	-1,252.5	8,502.4	0.00	0.00	0.00
14,700.0	90.00	181.20	6,770.0	-8,578.0	-1,254.6	8,602.4	0.00	0.00	0.00
14,800.0	90.00	181.20	6,770.0	-8,678.0	-1,256.7	8,702.4	0.00	0.00	0.00
14,900.0	90.00	181.20	6,770.0	-8,778.0	-1,258.8	8,802.4	0.00	0.00	0.00
15,000.0	90.00	181.20	6,770.0	-8,877.9	-1,260.9	8,902.4	0.00	0.00	0.00
15,100.0	90.00	181.20	6,770.0	-8,977.9	-1,263.0	9,002.4	0.00	0.00	0.00
15,200.0	90.00	181.20	6,770.0	-9,077.9	-1,265.1	9,102.4	0.00	0.00	0.00
15,300.0	90.00	181.20	6,770.0	-9,177.9	-1,267.2	9,202.4	0.00	0.00	0.00
15,400.0	90.00	181.20	6,770.0	-9,277.9	-1,269.3	9,302.4	0.00	0.00	0.00
15,500.0	90.00	181.20	6,770.0	-9,377.8	-1,271.4	9,402.4	0.00	0.00	0.00
15,600.0	90.00	181.20	6,770.0	-9,477.8	-1,273.5	9,502.4	0.00	0.00	0.00
15,700.0	90.00	181.20	6,770.0	-9,577.8	-1,275.5	9,602.4	0.00	0.00	0.00
15,800.0	90.00	181.20	6,770.0	-9,677.8	-1,277.6	9,702.4	0.00	0.00	0.00
15,900.0	90.00	181.20	6,770.0	-9,777.7	-1,279.7	9,802.4	0.00	0.00	0.00
16,000.0	90.00	181.20	6,770.0	-9,877.7	-1,281.8	9,902.4	0.00	0.00	0.00
16,100.0	90.00	181.20	6,770.0	-9,977.7	-1,283.9	10,002.4	0.00	0.00	0.00
16,200.0	90.00	181.20	6,770.0	-10,077.7	-1,286.0	10,102.4	0.00	0.00	0.00
16,300.0	90.00	181.20	6,770.0	-10,177.7	-1,288.1	10,202.4	0.00	0.00	0.00
16,400.0	90.00	181.20	6,770.0	-10,277.6	-1,290.2	10,302.4	0.00	0.00	0.00
16,500.0	90.00	181.20	6,770.0	-10,377.6	-1,292.3	10,402.4	0.00	0.00	0.00
16,600.0	90.00	181.20	6,770.0	-10,477.6	-1,294.4	10,502.4	0.00	0.00	0.00
16,700.0	90.00	181.20	6,770.0	-10,577.6	-1,296.5	10,602.4	0.00	0.00	0.00
16,800.0	90.00	181.20	6,770.0	-10,677.5	-1,298.5	10,702.4	0.00	0.00	0.00
16,900.0	90.00	181.20	6,770.0	-10,777.5	-1,300.6	10,802.4	0.00	0.00	0.00
17,000.0	90.00	181.20	6,770.0	-10,877.5	-1,302.7	10,902.4	0.00	0.00	0.00
17,100.0	90.00	181.20	6,770.0	-10,977.5	-1,304.8	11,002.4	0.00	0.00	0.00
17,200.0	90.00	181.20	6,770.0	-11,077.5	-1,306.9	11,102.4	0.00	0.00	0.00
17,300.0	90.00	181.20	6,770.0	-11,177.4	-1,309.0	11,202.4	0.00	0.00	0.00
17,400.0	90.00	181.20	6,770.0	-11,277.4	-1,311.1	11,302.4	0.00	0.00	0.00
17,500.0	90.00	181.20	6,770.0	-11,377.4	-1,313.2	11,402.4	0.00	0.00	0.00
17,600.0	90.00	181.20	6,770.0	-11,477.4	-1,315.3	11,502.4	0.00	0.00	0.00
17,700.0	90.00	181.20	6,770.0	-11,577.3	-1,317.4	11,602.4	0.00	0.00	0.00
17,800.0	90.00	181.20	6,770.0	-11,677.3	-1,319.5	11,702.4	0.00	0.00	0.00
17,900.0	90.00	181.20	6,770.0	-11,777.3	-1,321.6	11,802.4	0.00	0.00	0.00
18,000.0	90.00	181.20	6,770.0	-11,877.3	-1,323.6	11,902.4	0.00	0.00	0.00
18,100.0	90.00	181.20	6,770.0	-11,977.3	-1,325.7	12,002.4	0.00	0.00	0.00
18,200.0	90.00	181.20	6,770.0	-12,077.2	-1,327.8	12,102.4	0.00	0.00	0.00
18,300.0	90.00	181.20	6,770.0	-12,177.2	-1,329.9	12,202.4	0.00	0.00	0.00
18,400.0	90.00	181.20	6,770.0	-12,277.2	-1,332.0	12,302.4	0.00	0.00	0.00
18,500.0	90.00	181.20	6,770.0	-12,377.2	-1,334.1	12,402.4	0.00	0.00	0.00
18,600.0	90.00	181.20	6,770.0	-12,477.2	-1,336.2	12,502.4	0.00	0.00	0.00
18,700.0	90.00	181.20	6,770.0	-12,577.1	-1,338.3	12,602.4	0.00	0.00	0.00
18,800.0	90.00	181.20	6,770.0	-12,677.1	-1,340.4	12,702.4	0.00	0.00	0.00
18,900.0	90.00	181.20	6,770.0	-12,777.1	-1,342.5	12,802.4	0.00	0.00	0.00
19,000.0	90.00	181.20	6,770.0	-12,877.1	-1,344.6	12,902.4	0.00	0.00	0.00
19,100.0	90.00	181.20	6,770.0	-12,977.0	-1,346.6	13,002.4	0.00	0.00	0.00



<b>Database:</b>	EDM 5000.1 Single User Db	<b>Local Co-ordinate Reference:</b>	Well SU Spicer 0680 1-5H17
<b>Company:</b>	D90 Energy, LLC	<b>TVD Reference:</b>	RKB @ 8239.7usft (26' kb)
<b>Project:</b>	Jackson County, Colorado	<b>MD Reference:</b>	RKB @ 8239.7usft (26' kb)
<b>Site:</b>	Sec 32, T7N, R80W, 6th PM	<b>North Reference:</b>	Grid
<b>Well:</b>	SU Spicer 0680 1-5H17	<b>Survey Calculation Method:</b>	Minimum Curvature
<b>Wellbore:</b>	Wellbore #1		
<b>Design:</b>	Prelim #1		

## Planned Survey

Measured Depth (usft)	Inclination (°)	Azimuth (°)	Vertical Depth (usft)	+N/-S (usft)	+E/-W (usft)	Vertical Section (usft)	Dogleg Rate (°/100usft)	Build Rate (°/100usft)	Turn Rate (°/100usft)
19,200.0	90.00	181.20	6,770.0	-13,077.0	-1,348.7	13,102.4	0.00	0.00	0.00
19,300.0	90.00	181.20	6,770.0	-13,177.0	-1,350.8	13,202.4	0.00	0.00	0.00
19,400.0	90.00	181.20	6,770.0	-13,277.0	-1,352.9	13,302.4	0.00	0.00	0.00
19,500.0	90.00	181.20	6,770.0	-13,377.0	-1,355.0	13,402.4	0.00	0.00	0.00
19,600.0	90.00	181.20	6,770.0	-13,476.9	-1,357.1	13,502.4	0.00	0.00	0.00
19,700.0	90.00	181.20	6,770.0	-13,576.9	-1,359.2	13,602.4	0.00	0.00	0.00
19,800.0	90.00	181.20	6,770.0	-13,676.9	-1,361.3	13,702.4	0.00	0.00	0.00
19,900.0	90.00	181.20	6,770.0	-13,776.9	-1,363.4	13,802.4	0.00	0.00	0.00
20,000.0	90.00	181.20	6,770.0	-13,876.8	-1,365.5	13,902.4	0.00	0.00	0.00
20,100.0	90.00	181.20	6,770.0	-13,976.8	-1,367.6	14,002.4	0.00	0.00	0.00
20,200.0	90.00	181.20	6,770.0	-14,076.8	-1,369.6	14,102.4	0.00	0.00	0.00
20,300.0	90.00	181.20	6,770.0	-14,176.8	-1,371.7	14,202.4	0.00	0.00	0.00
20,400.0	90.00	181.20	6,770.0	-14,276.8	-1,373.8	14,302.4	0.00	0.00	0.00
20,500.0	90.00	181.20	6,770.0	-14,376.7	-1,375.9	14,402.4	0.00	0.00	0.00
<b>TD @ 20601.8' MD / 6770.0' TVD</b>									
20,601.8	90.00	181.20	6,770.0	-14,478.5	-1,378.0	14,504.2	0.00	0.00	0.00

## Design Targets

## Target Name

- hit/miss target - Shape	Dip Angle (°)	Dip Dir. (°)	TVD (usft)	+N/-S (usft)	+E/-W (usft)	Northing (usft)	Easting (usft)	Latitude	Longitude
LP - SU Spicer 0680 1 - plan hits target center - Point	0.00	360.00	6,770.0	-1,146.7	-563.0	1,435,845.16	2,748,159.11	40.526264	-106.405946
PBHL - SU Spicer 0680 1 - plan hits target center - Point	0.00	360.00	6,770.0	-14,478.5	-1,378.0	1,422,513.43	2,747,344.05	40.489648	-106.408386

## Plan Annotations

Measured Depth (usft)	Vertical Depth (usft)	Local Coordinates		Comment
		+N/-S (usft)	+E/-W (usft)	
2,600.0	2,600.0	0.0	0.0	Build 2°/100'
3,599.8	3,579.7	-138.0	-103.9	EOB @ 20.00° Inc. / 216.99° Azm
4,737.6	4,648.8	-448.7	-338.0	Drop 2°/100'
5,737.4	5,628.5	-586.7	-441.9	EOD @ Vert.
6,305.9	6,197.0	-586.7	-441.9	Build 10°/100'
7,205.9	6,770.0	-1,146.7	-563.0	EOB @ 90.00° Inc. / 192.20° Azm
9,739.2	6,770.0	-3,622.8	-1,098.3	Turn 2°/100'
10,289.3	6,770.0	-4,168.3	-1,162.4	EOT @ 90.00° Inc. / 181.20° Azm
20,601.8	6,770.0	-14,478.5	-1,378.0	TD @ 20601.8' MD / 6770.0' TVD