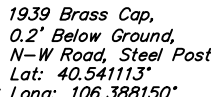
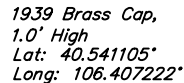
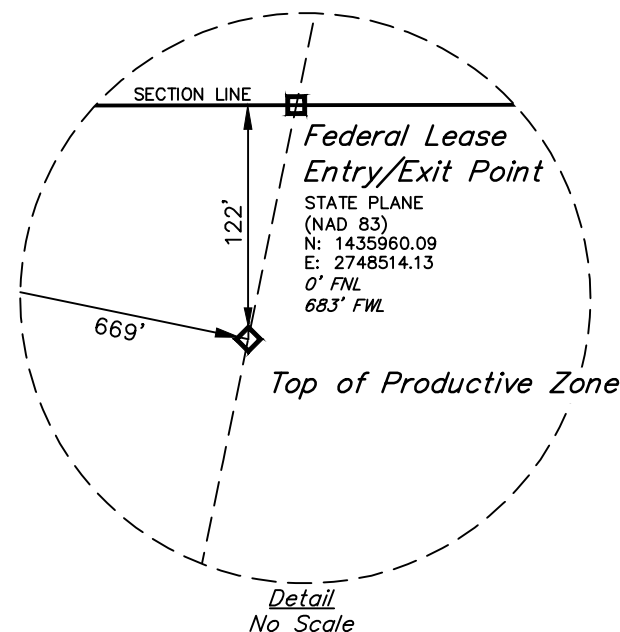


1981 Alum. Cap,
0.5' High (Used),
Also 1939 Brass
Cap in Ditch
Lat: 40.541110°
Long: 106.397685°
eas.)



LEGEND:

- = SURFACE HOLE LOCATION.
 ◆ = TOP OF PRODUCTIVE ZONE.
 □ = FEDERAL LEASE ENTRY/EXIT POINT.
 ○ = TARGET BOTTOM HOLE.
 ▲ = SECTION CORNERS LOCATED. (NAD 83)



PDOP = 1.3

NAD 83 (SURFACE HOLE LOCATION)
LATITUDE = 40°31'46.09" (40.529468°)
LONGITUDE = 106°24'14.09" (106.403915°)
NAD 27 (SURFACE HOLE LOCATION)
LATITUDE = 40°31'46.16" (40.529488°)
LONGITUDE = 106°24'11.98" (106.403328°)
STATE PLANE NAD 83 (CO. NORTH)
N: 1437006.71' E: 2748735.52'
STATE PLANE NAD 27 (CO. NORTH)
N: 437004.53' E: 1748891.96'

NAD 83 (FED. LEASE ENTRY/EXIT PT.)
LATITUDE = 40°31'35.72" (40.526590°)
LONGITUDE = 106°24'16.82" (106.404673°)
NAD 27 (FED. LEASE ENTRY/EXIT PT.)
LATITUDE = 40°31'35.79" (40.526609°)
LONGITUDE = 106°24'14.71" (106.404086°)
STATE PLANE NAD 83 (CO. NORTH)
N: 1435960.09' E: 27485.14.13'
STATE PLANE NAD 27 (CO. NORTH)
N: 435957.91' E: 1748670.58'

NAD 83 (TOP OF PRODUCTIVE ZONE)
 LATITUDE = 40°31'34.52" (40.526255°)
 LONGITUDE = 106°24'17.15" (106.404763°)
NAD 27 (TOP OF PRODUCTIVE ZONE)
 LATITUDE = 40°31'34.59" (40.526275°)
 LONGITUDE = 106°24'15.03" (106.404176°)
STATE PLANE NAD 83 (CO. NORTH)
 N: 1435838.49' E: 2748487.84'
STATE PLANE NAD 27 (CO. NORTH)
 N: 435836.30' E: 1748644.29'

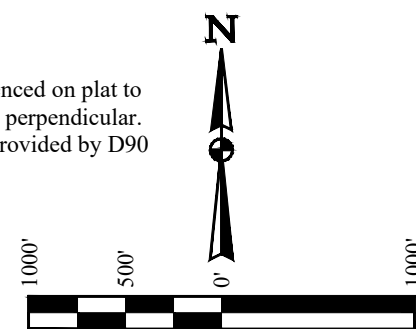
NAD 83 (FED. LEASE EXIT PT.)
LATITUDE = 40°30'41.49" (40.511525°)
LONGITUDE = 106°24'24.80" (106.406889°)
NAD 27 (FED. LEASE EXIT PT.)
LATITUDE = 40°30'41.56" (40.511545°)
LONGITUDE = 106°24'22.69" (106.406302°)
STATE PLANE NAD 83 (CO. NORTH)
N: 1430478.66' E: 2747842.01'
STATE PLANE NAD 27 (CO. NORTH)
N: 430476.44' E: 1747998.51'

NAD 83 (FED. LEASE ENTRY PT.)
LATITUDE = 40°30'15.39" (40.504274°)
LONGITUDE = 106°24'25.17" (106.406992°)
NAD 27 (FED. LEASE ENTRY PT.)
LATITUDE = 40°30'15.46" (40.504294°)
LONGITUDE = 106°24'23.06" (106.406405°)
STATE PLANE NAD 83 (CO. NORTH)
N: 1427837.54' E: 2747786.29'
STATE PLANE NAD 27 (CO. NORTH)
N: 427835.31' E: 1747942.82'

NAD 83 (FED. LEASE EXIT PT.)
LATITUDE = 40°29'49.09" (40.496968°)
LONGITUDE = 106°24'25.55" (106.407096°)
NAD 27 (FED. LEASE EXIT PT.)
LATITUDE = 40°29'49.16" (40.496988°)
LONGITUDE = 106°24'23.43" (106.406509°)
STATE PLANE NAD 83 (CO. NORTH)
N: 1425176.35' E: 2747730.14'
STATE PLANE NAD 27 (CO. NORTH)
N: 425174.12' E: 1747886.70'

NAD 83 (TARGET BOTTOM HOLE)
LATITUDE = 40°29'22.75" (40.489652°)
LONGITUDE = 106°24'25.92" (106.407200°)
NAD 27 (TARGET BOTTOM HOLE)
LATITUDE = 40°29'22.82" (40.489671°)
LONGITUDE = 106°24'23.81" (106.406613°)
STATE PLANE NAD 83 (CO. NORTH)
N: 1422511.42' E: 2747673.92'
STATE PLANE NAD 27 (CO. NORTH)
N: 422509.20' E: 1747830.52'

- NOTE:**
- Distances referenced on plat to section lines are perpendicular.
 - Wellbore data provided by D90 ENERGY, LLC



BASIS OF BEARINGS
THE BASIS OF BEARINGS THE WEST LINE OF THE SW 1/4 OF
SECTION 32, T7N, R80W, 6th P.M. WHICH FROM A GPS OBSERVATIONS
BEARS N00°27'11"W. MONUMENTS DESCRIBED HEREON.

BASIS OF ELEVATION

SPOT ELEVATION AT THE SOUTHEAST CORNER OF SECTION 29, T7N, R80W, 6th P.M., TAKEN FROM THE COALMONT QUADRANGLE, COLORADO, JACKSON COUNTY 7.5 MINUTE QUAD. (TOPOGRAPHIC MAP) PUBLISHED BY THE UNITED STATES DEPARTMENT OF THE INTERIOR, GEOLOGICAL SURVEY. SAID ELEVATION IS MARKED AS BEING 8156 FEET.

CERTIFICATE
THE ABOVE MAP WAS PREPARED FROM FIELD
SURVEYS MADE BY ME OR UNDER MY SUPERVISION
AND IS TRUE AND CORRECT TO THE BEST OF MY
KNOWLEDGE.
[Signature]
REGISTERED LAND SURVEYOR
REGISTRATION NO. 28285
STATE OF COLORADO

REV: 1 09-08-21 M.D. (UPDATE WELLBORE PATH

D90 ENERGY, LLC

SU SPICER 0680 2-5H17
SW 1/4 SW 1/4, SECTION 32, T7N, R80W, 6th P.M.
JACKSON COUNTY, COLORADO



UELS, LLC
Corporate Office * 85 South 200 East
Vernal, UT 84078 * (435) 789-1017

SURVEYED BY	NATE WELCH	08-13-21	SCALE
DRAWN BY	T.L.L.	08-18-21	1" = 1000'

WELL LOCATION PLAT