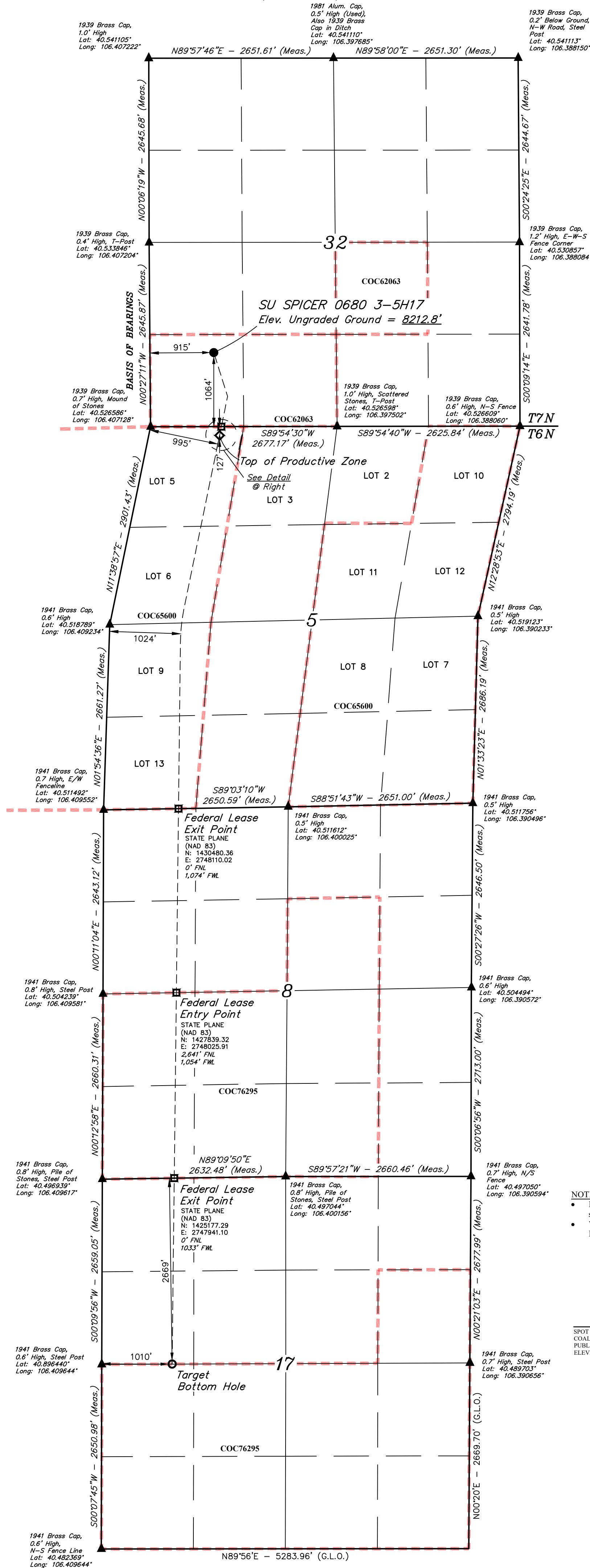
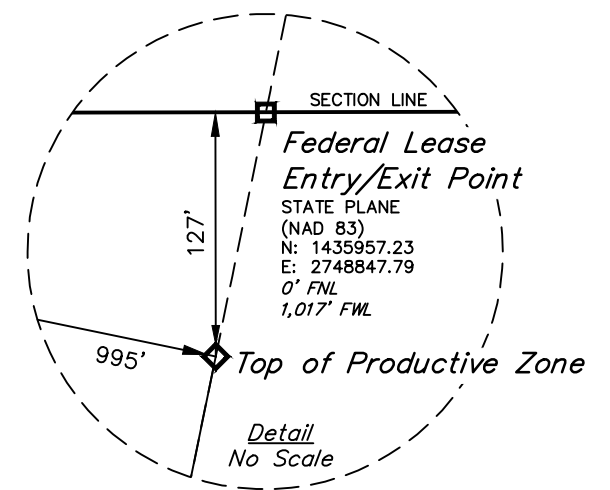


T7N, R80W, 6th P.M.



LEGEND:

- = SURFACE HOLE LOCATION
 ◆ = TOP OF PRODUCTIVE ZONE.
 □ = FEDERAL LEASE ENTRY/EXIT POINT.
 ○ = TARGET BOTTOM HOLE.
 ▲ = SECTION CORNERS LOCATED. (NAD 83)



PDOP = 1.3

NAD 83 (SURFACE HOLE LOCATION)
 LATITUDE = 40°31'46.23" (06.45295108)
 LONGITUDE = 106°24'13.92" (06.40638672)

NAD 27 (SURFACE HOLE LOCATION)
 LATITUDE = 40°31'46.131" (06.45295292)
 LONGITUDE = 106°24'11.81" (06.40632080)

STATE PLANE NAD 83 (CO. NORTH)
 N: 1437021.53' E: 2748748.95'

STATE PLANE NAD 27 (CO. NORTH)
 N: 437019.35' E: 1748905.39'

NAD 83 (FED. LEASE ENTRY/EXIT PT.)
 LATITUDE = 40°31'35.73" (06.4526591)
 LONGITUDE = 106°24'12.50" (06.40634722)

NAD 27 (FED. LEASE ENTRY/EXIT PT.)
 LATITUDE = 40°31'35.80" (06.4526611)
 LONGITUDE = 106°24'09.39" (06.4062886)

STATE PLANE NAD 83 (CO. NORTH)
 N: 1435957.23' E: 2748847.24'

STATE PLANE NAD 27 (CO. NORTH)
 N: 435955.05' E: 1749004.24'

NAD 83 (TOP OF PRODUCTIVE ZONE)
 LATITUDE = 40°31'34.47" (06.4526242)
 LONGITUDE = 106°24'12.84" (06.40635666)

NAD 27 (TOP OF PRODUCTIVE ZONE)
 LATITUDE = 40°31'34.54" (06.4526262)
 LONGITUDE = 106°24'10.73" (06.4062980)

STATE PLANE NAD 83 (CO. NORTH)
 N: 1435830.41' E: 2748820.37'

STATE PLANE NAD 27 (CO. NORTH)
 N: 435828.23' E: 1748976.82'

NAD 83 (FED. LEASE EXIT PT.)
 LATITUDE = 40°30'41.55" (06.4511540)
 LONGITUDE = 106°24'00.27" (06.4065866)

NAD 27 (FED. LEASE EXIT PT.)
 LATITUDE = 40°30'41.62" (06.4511560)
 LONGITUDE = 106°24'18.36" (06.4065099)

STATE PLANE NAD 83 (CO. NORTH)
 N: 1430480.78' E: 2748176.57'

STATE PLANE NAD 27 (CO. NORTH)
 N: 430478.5' E: 1748333.07'

NAD 83 (FED. LEASE ENTRY PT.)
 LATITUDE = 40°30'15.45" (06.4504291)
 LONGITUDE = 106°24'20.86" (06.4065795)

NAD 27 (FED. LEASE ENTRY PT.)
 LATITUDE = 40°30'15.52" (06.4504310)
 LONGITUDE = 106°24'20.88" (06.4065028)

STATE PLANE NAD 83 (CO. NORTH)
 N: 1427840.62' E: 2748811.19'

STATE PLANE NAD 27 (CO. NORTH)
 N: 427837.79' E: 1748275.85'

NAD 83 (FED. LEASE EXIT PT.)
 LATITUDE = 40°29'49.13" (06.4496982)
 LONGITUDE = 106°24'21.26" (06.4065904)

NAD 27 (FED. LEASE EXIT PT.)
 LATITUDE = 40°29'49.20" (06.4497001)
 LONGITUDE = 106°24'19.14" (06.4065317)

STATE PLANE NAD 83 (CO. NORTH)
 N: 1425177.82' E: 2748661.62'

STATE PLANE NAD 27 (CO. NORTH)
 N: 425175.59' E: 1748218.18'

NAD 83 (TARGET BOTTOM HOLE)
 LATITUDE = 40°29'22.76" (06.4489656)
 LONGITUDE = 106°24'21.65" (06.4066014)

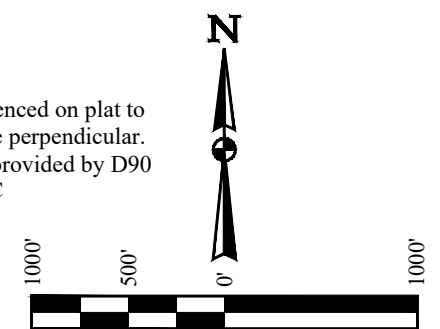
NAD 27 (TARGET BOTTOM HOLE)
 LATITUDE = 40°29'22.83" (06.4489675)
 LONGITUDE = 106°24'19.54" (06.4065427)

STATE PLANE NAD 83 (CO. NORTH)
 N: 1422509.41' E: 2748003.78'

STATE PLANE NAD 27 (CO. NORTH)
 N: 422507.19' E: 1748160.37'

NOTE:

- Distances referenced on plat to section lines are perpendicular.
- Wellbore data provided by D90 ENERGY, LLC



BASIS OF BEARINGS

THE BASIS OF BEARINGS THE WEST LINE OF THE SW 1/4 OF SECTION 32, T7N, R80W, 6th P.M. WHICH FROM A GPS OBSERVATIONS BEARS N00°27'11"W. MONUMENTS DESCRIBED HEREON.

BASIS OF ELEVATION

SPOT ELEVATION AT THE SOUTHEAST CORNER OF SECTION 29, T7N, R80W, 6th P.M., TAKEN FROM THE COALMONT QUADRANGLE, COLORADO, JACKSON COUNTY 7.5 MINUTE QUAD. (TOPOGRAPHIC MAP) PUBLISHED BY THE UNITED STATES DEPARTMENT OF THE INTERIOR, GEOLOGICAL SURVEY. SAID ELEVATION IS MARKED AS BEING 8156 FEET.

CERTIFICATE

THIS IS TO CERTIFY THAT THE ABOVE PLAN WAS PREPARED FROM FIELD NOTES OF ACTUAL SURVEYS MADE BY ME OR UNDER MY SUPERVISION, AND THAT THE SAME ARE TRUE AND CORRECT TO THE BEST OF MY KNOWLEDGE AND BELIEF.

REGISTERED LAND SURVEYOR
REGISTRATION NO. 28285
STATE OF COLORADO

REV: 1 09-08-21 M.D. (UPDATE WELLBORE PATH)

D90 ENERGY, LLC

SU SPICER 0680 3-5H17
SW 1/4 SW 1/4, SECTION 32, T7N, R80W, 6th P.M.
JACKSON COUNTY, COLORADO

SURVEYED BY	NATE WELCH	08-13-21	SCALE
DRAWN BY	T.L.L.	08-18-21	1" = 1000'

WELL LOCATION PLAT

UELS, LLC
Corporate Office * 85 South 200 East
Vernal, UT 84078 * (435) 789-1017