




TEMP	8.75	100	4.5	0.25	11.6	81.2	0.7
MINATTN db/ft 0.8	PERFS No	PPT usec 149	SRFTEMP degF 0	TDEPTH ft 1280			

**Variable Description**

BHTEMP\_Src : BHTEMP Input Source Selector  
 BOREID : Borehole I.D.  
 BOTTEMP : Bottom Hole Temperature  
 CASEOD : Casing O.D.  
 CASETHCK : Casing Thickness  
 CASEWGHT : Casing Weight  
 MAXAMPL : Maximum Amplitude

MINAMPL : Minimum Amplitude  
 MINATTN : Minimum Attenuation  
 PERFS : Perforation Flag  
 PPT : Predicted Pipe Time  
 SRFTEMP : Surface Temperature  
 TDEPTH : Total Depth

Sensor	Offset (ft)	Schematic	Description	Length (ft)	O.D. (in)	Weight (lb)	
			Titan-1.4375 1 7/16 Titan Type II Cable Head	1.03	1.44	5.00	
			Tek-2.75 2 3/4" Tekco Adjustable Centralizer	2.73	2.75	25.00	
WVFSYNC	16.00						
WVFCAL	16.00						
TEMP	14.87						
WVFS8	13.58						
WVFS7	13.58						
WVFS6	13.58						
WVFS5	13.58						
WVFS4	13.58						
WVFS3	13.58						
WVFS2	13.58						
WVFS1	13.58						
WV3FT	12.83						
WV5FT	11.83						
WVTEMP	8.50						
			Tek-2.75 2 3/4" Tekco Adjustable Centralizer	2.73	2.75	25.00	
			SCBLTEKSECT-275 Temp JS (234RIBT-3020) TekCo 2 3/4" 400 Deg. F Sector Tool with Temperature (JS)	9.13	2.75	130.00	
CCI	4.62		CCL-275tekco (257) Tekco 2 3/4" 450 Deg. F. Rare Earth Magnets	1.83	2.75	33.00	

CCL	1.02								
GR	1.31		GR-Tek-Co 2 3/4 (234GR4-269) Tekco 2 3/4" 400 Deg. F Logging Gamma Ray	3.67	2.75	40.00			
			Titan-1.375_Cap Titan 1 3/8" Cap	0.27	1.38	1.00			

Dataset: state 30-16.db: field/well/run1/pass7  
 Total length: 21.39 ft  
 Total weight: 259.00 lb  
 O.D.: 2.75 in

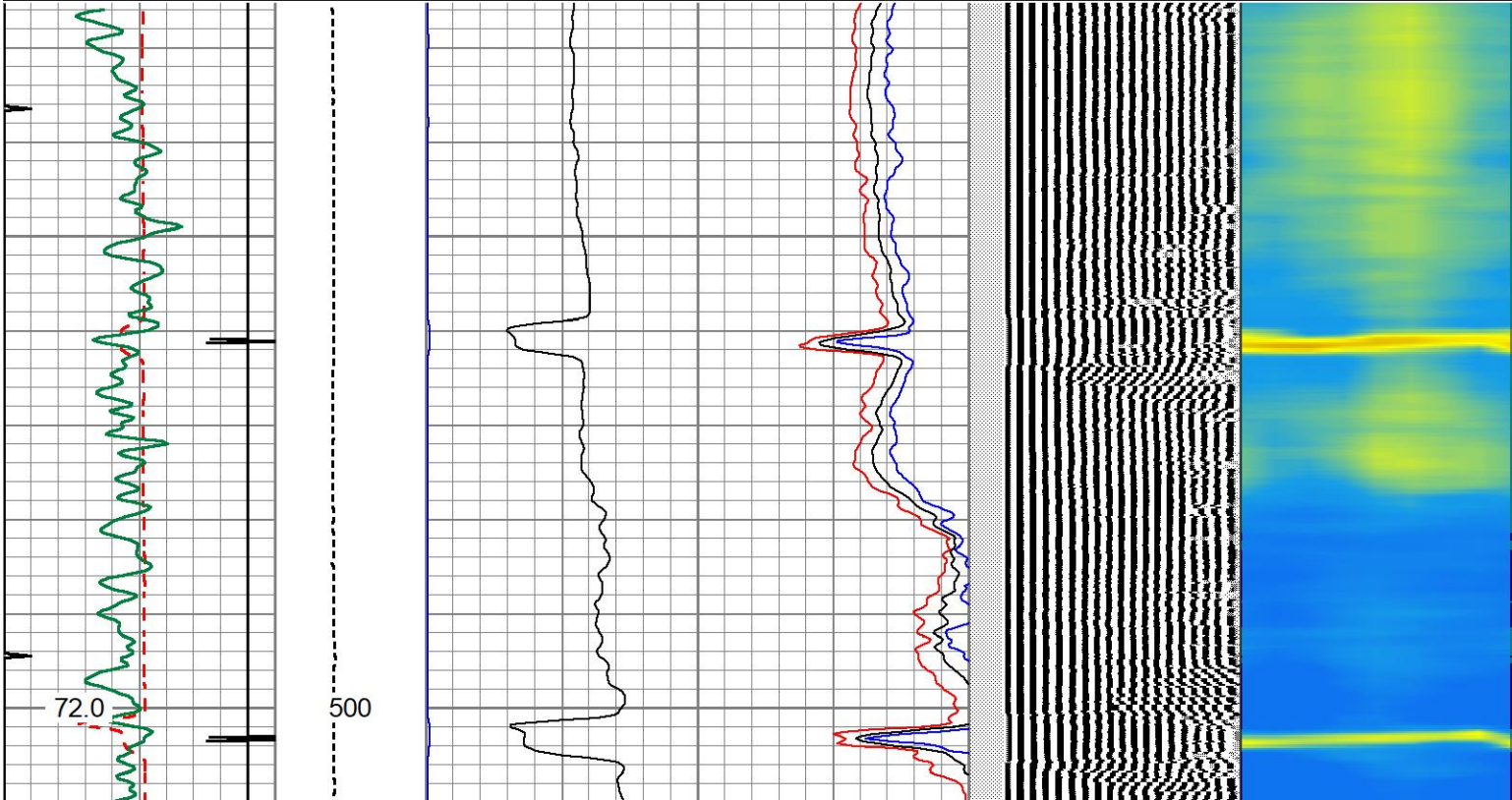


# FREE PIPE PASS

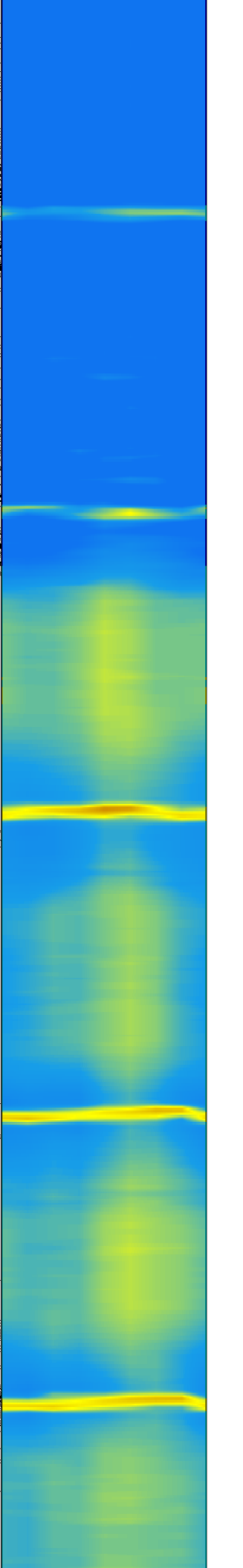
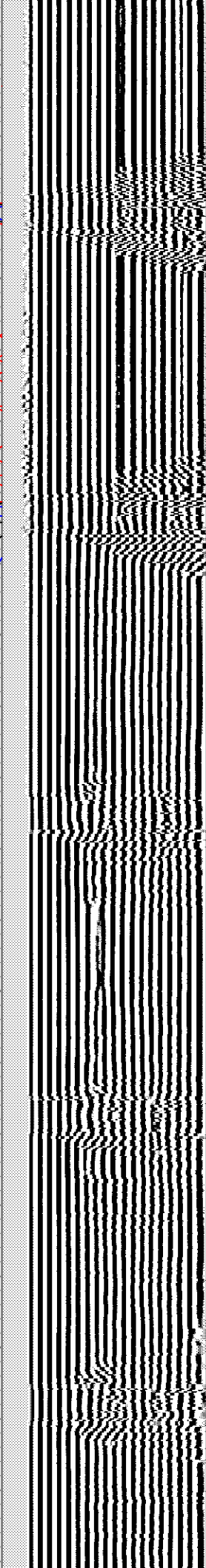
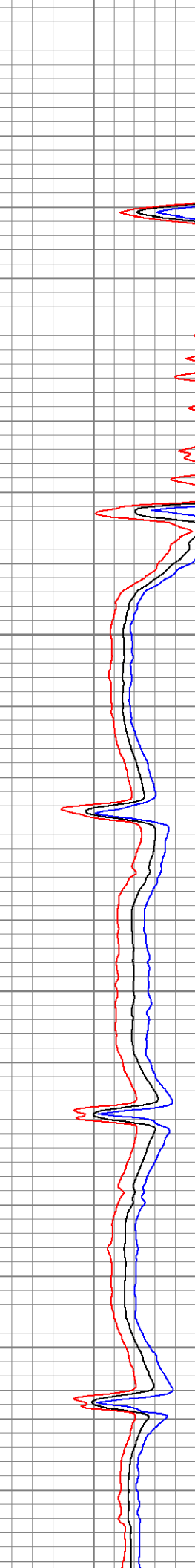
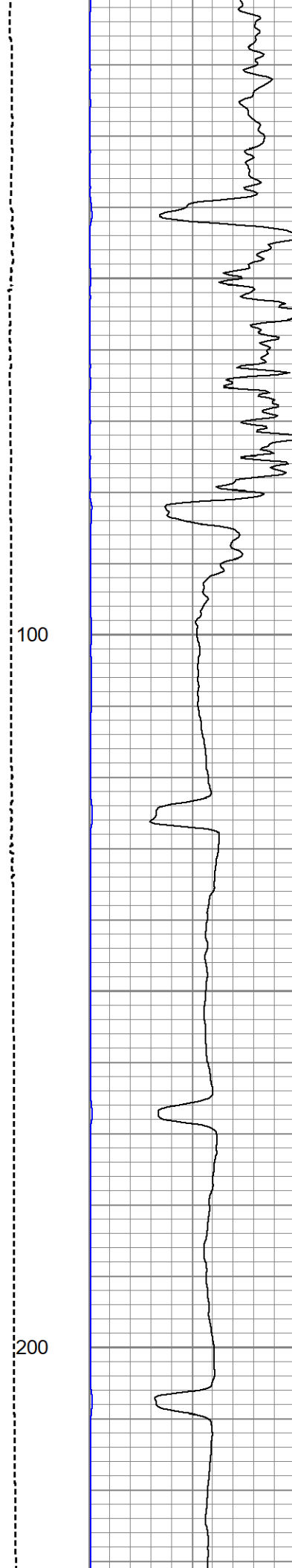
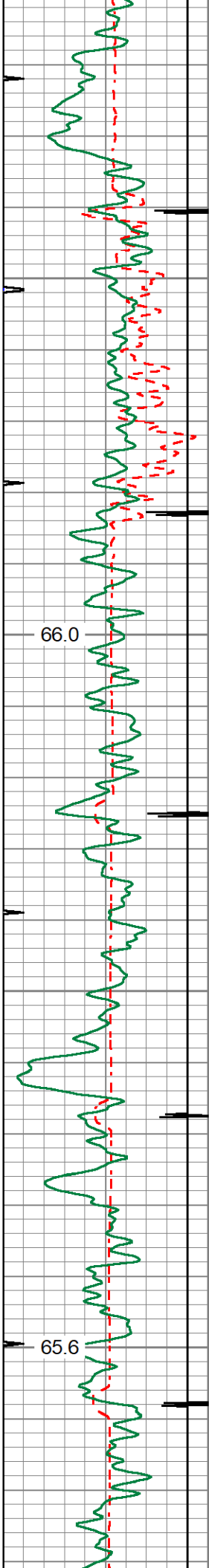
Database File: state 30-16.db  
 Dataset Pathname: pass3  
 Presentation Format: 1patriotradii  
 Dataset Creation: Fri Jun 11 15:54:23 2021  
 Charted by: Depth in Feet scaled 1:240

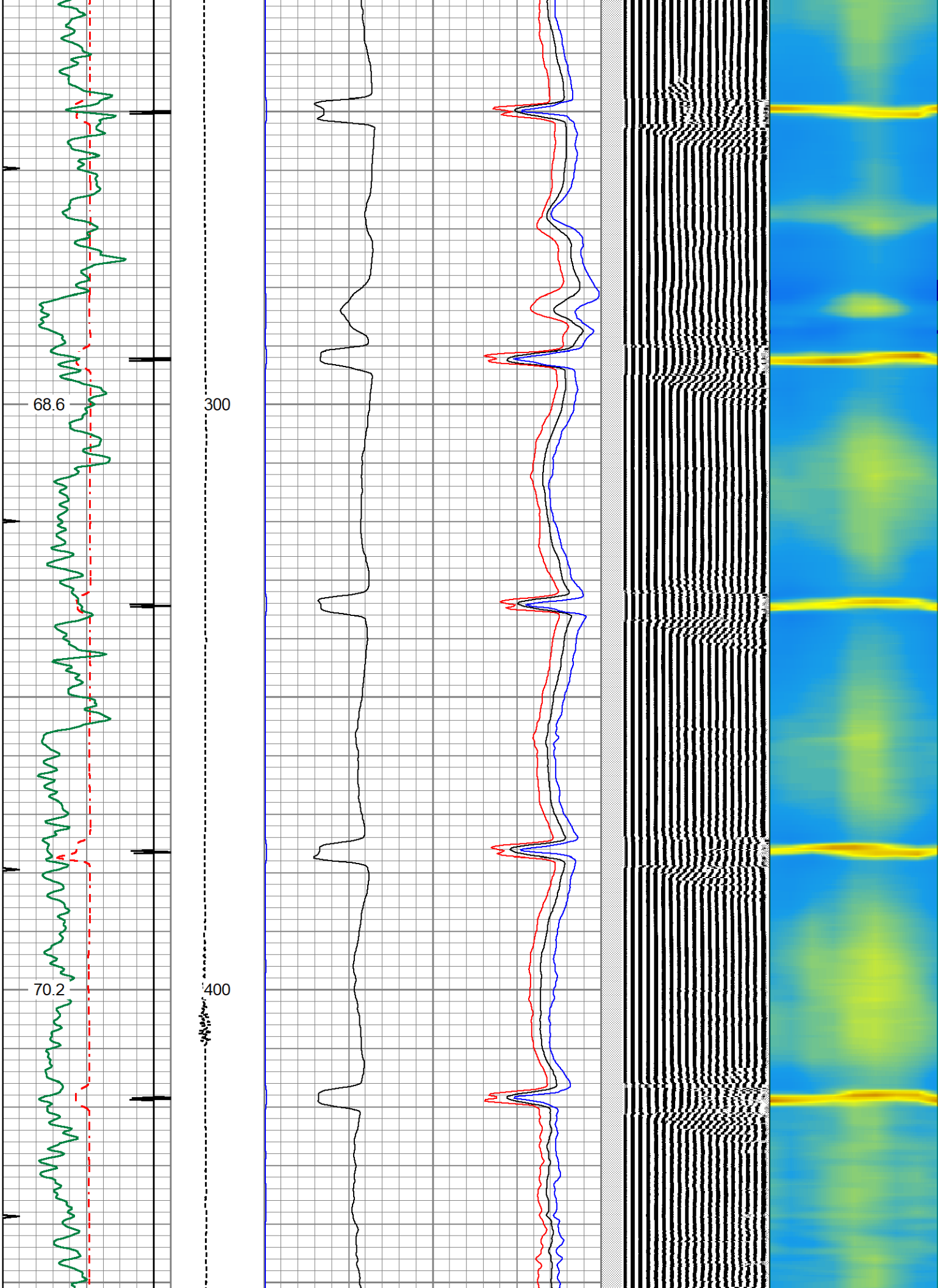
275	TT (usec)	175	LTEN	0	AMP (mV)	100	0	AMPAVG	100	200	VDL (usec)	1200	1	RADIAL MAP	8
0	GR	150	0 (lb/1000)	0	3FT X 5 (mV)	20	0	AMPMAX	100						
9	CCL	-1		0	BONDIX	20	0	AMPMIN	100						
0	LSPD (ft/min)	100													

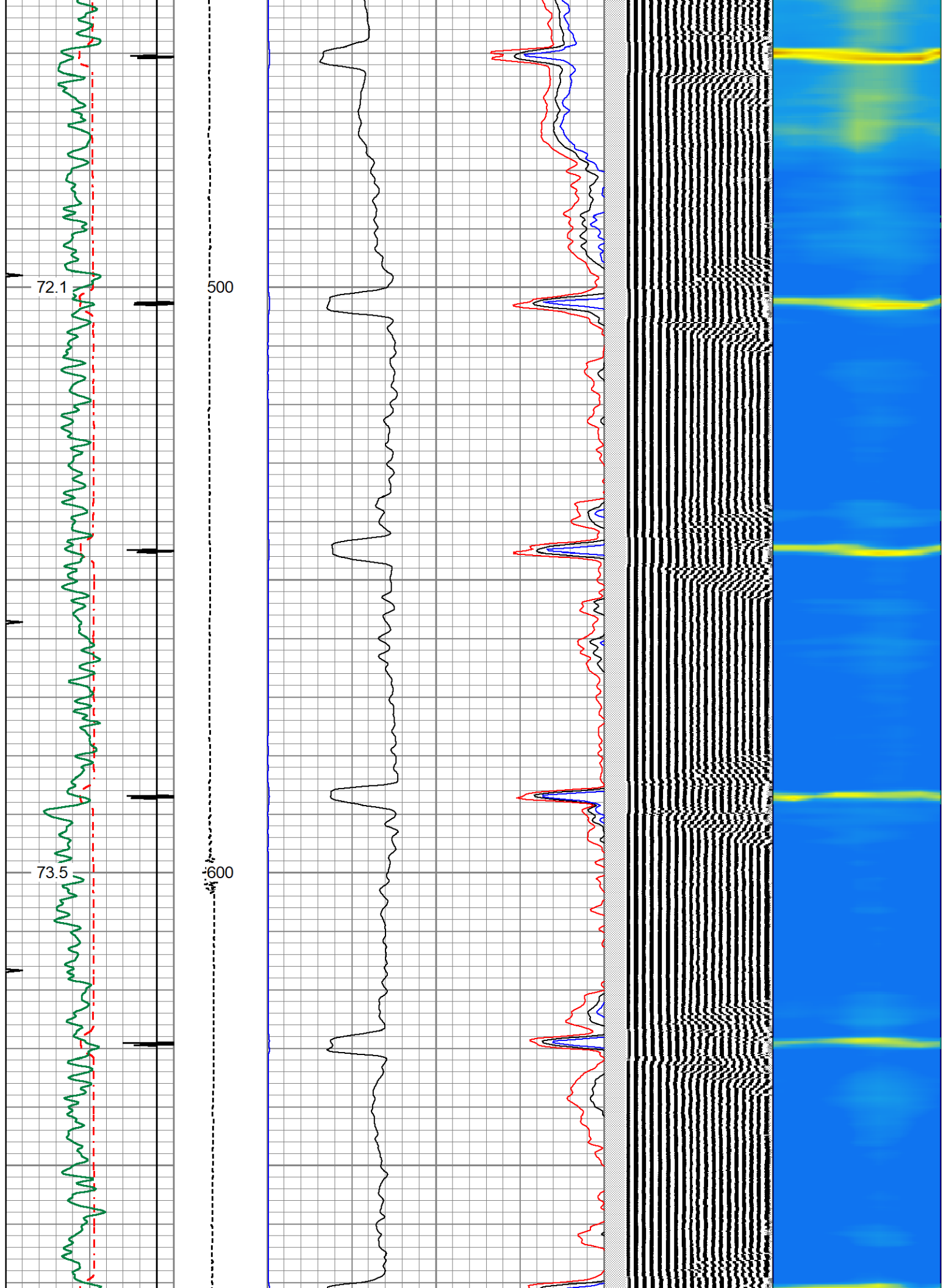
TEMP (degF)

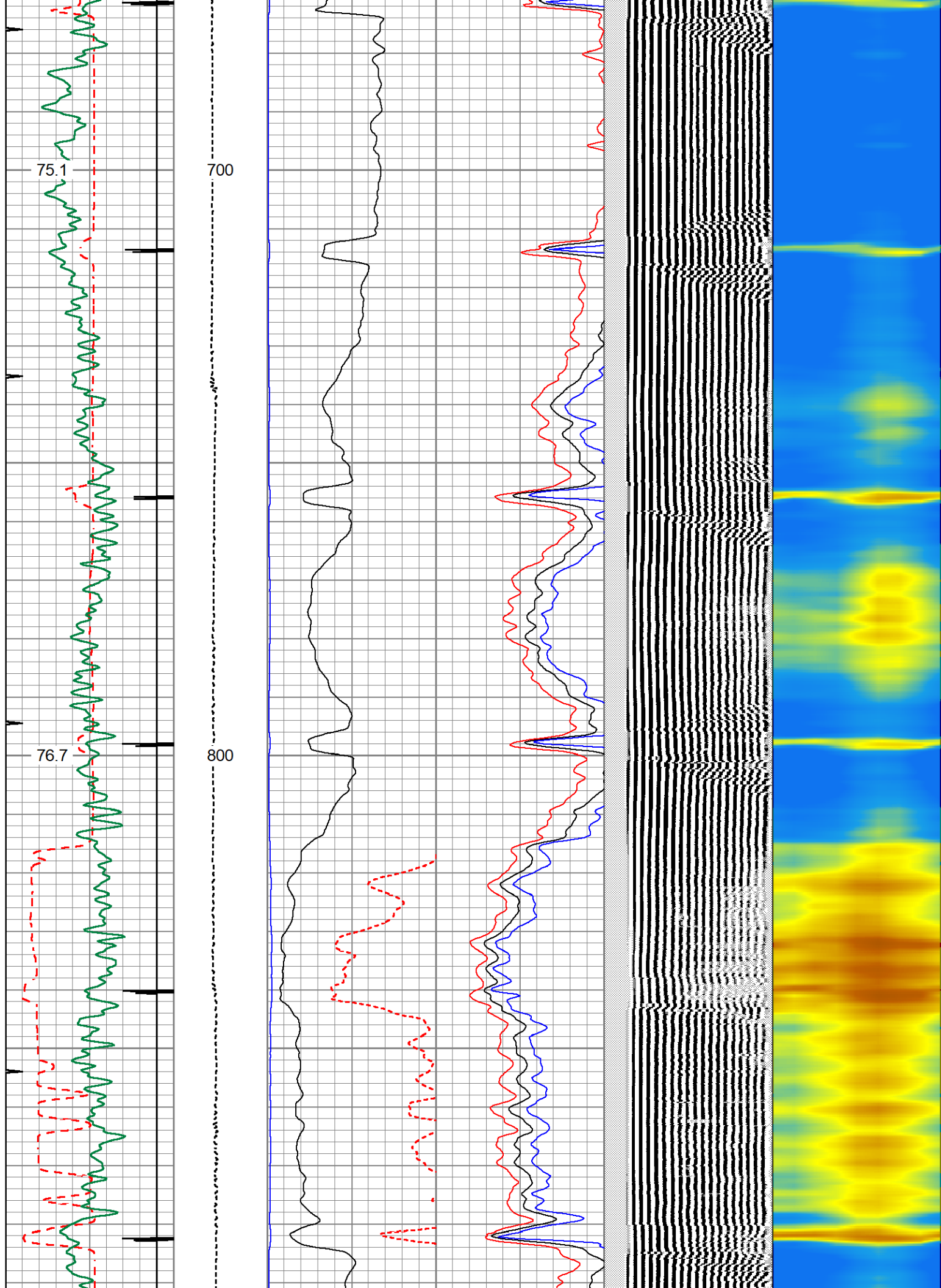


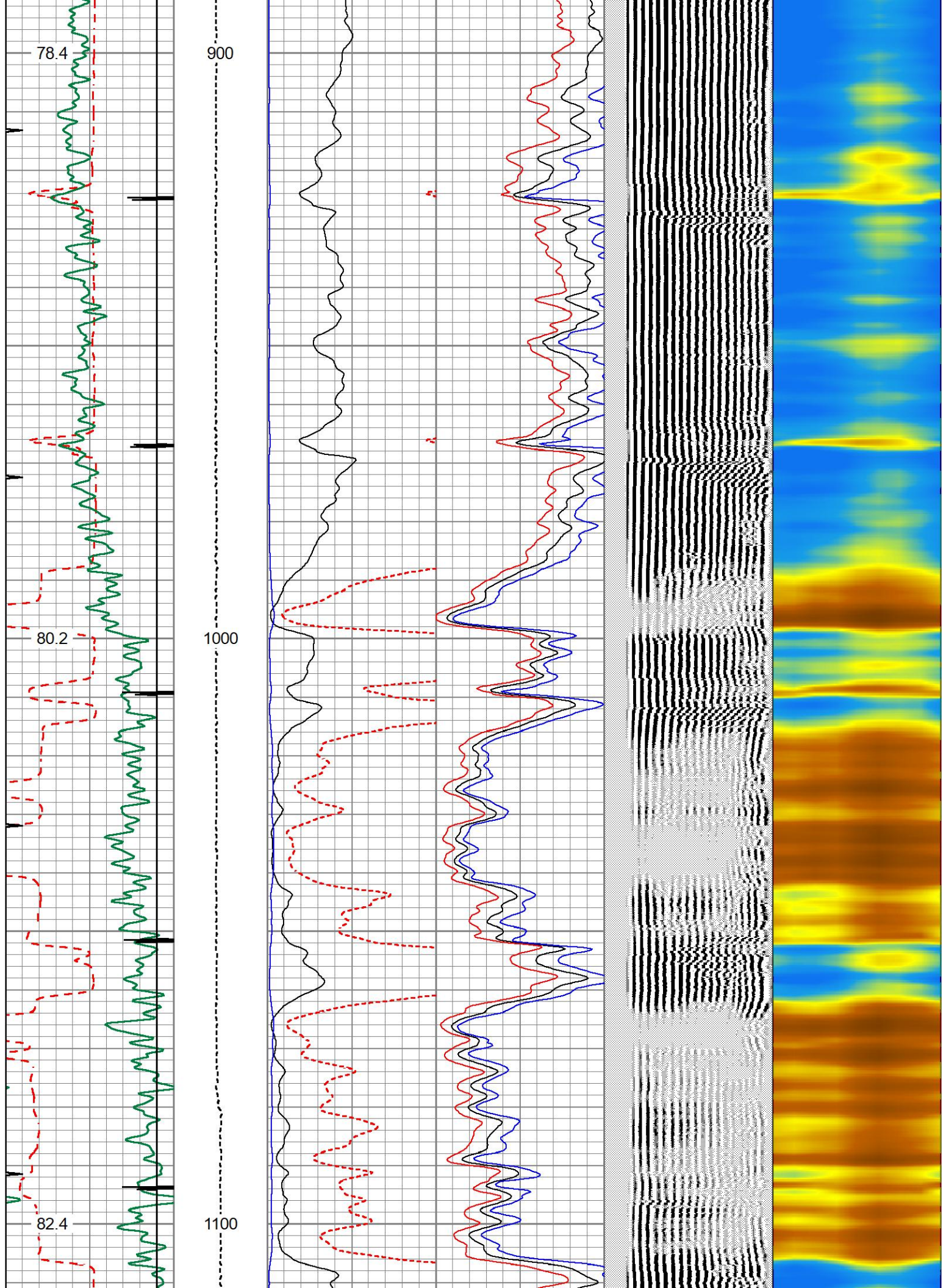


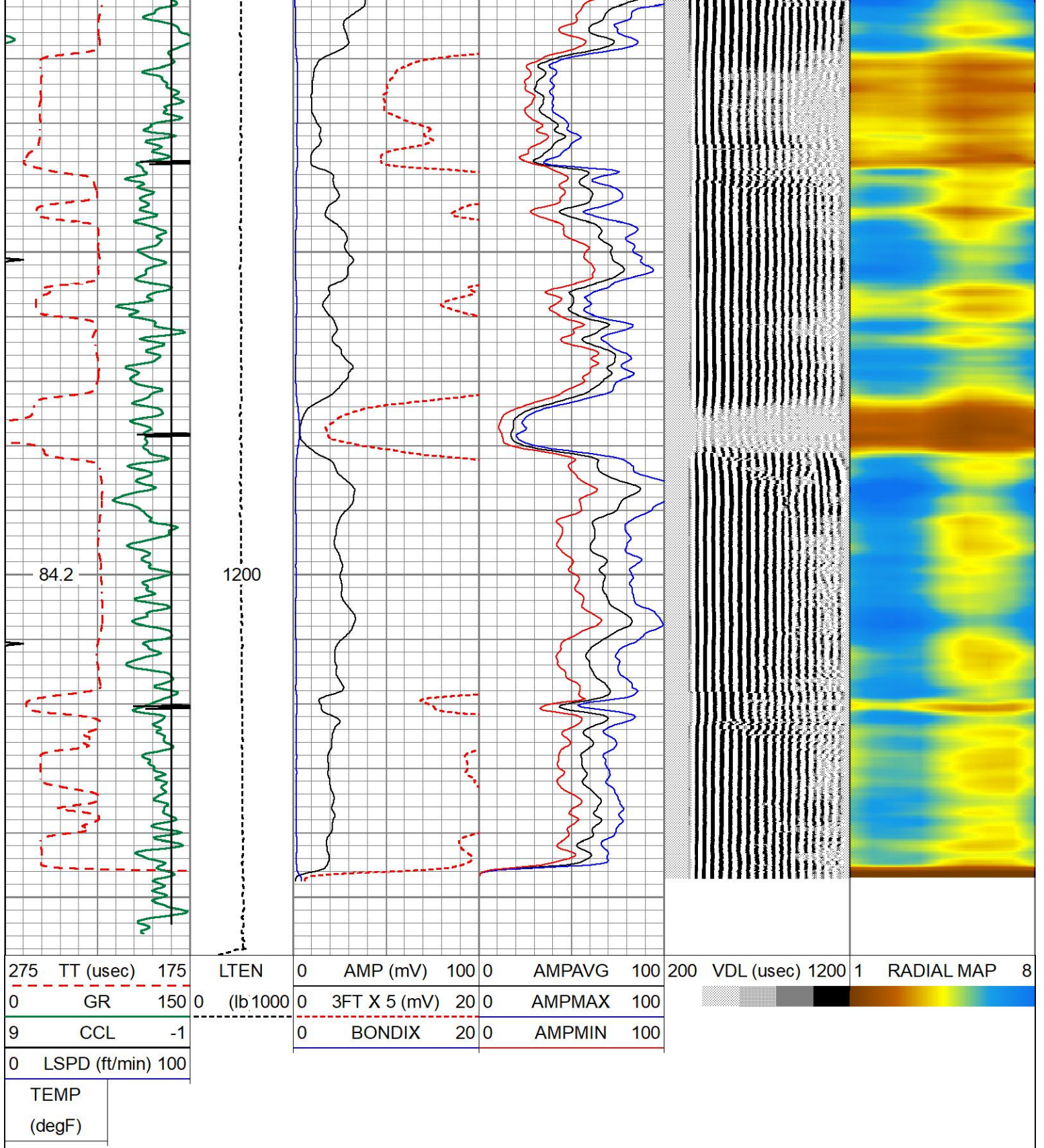












# REPEAT PASS

Database File state 30-16.db  
 Dataset Pathname pass5  
 Presentation Format 1patriotradii  
 Dataset Creation Fri Jun 11 16:04:52 2021  
 Charted by Depth in Feet scaled 1:240

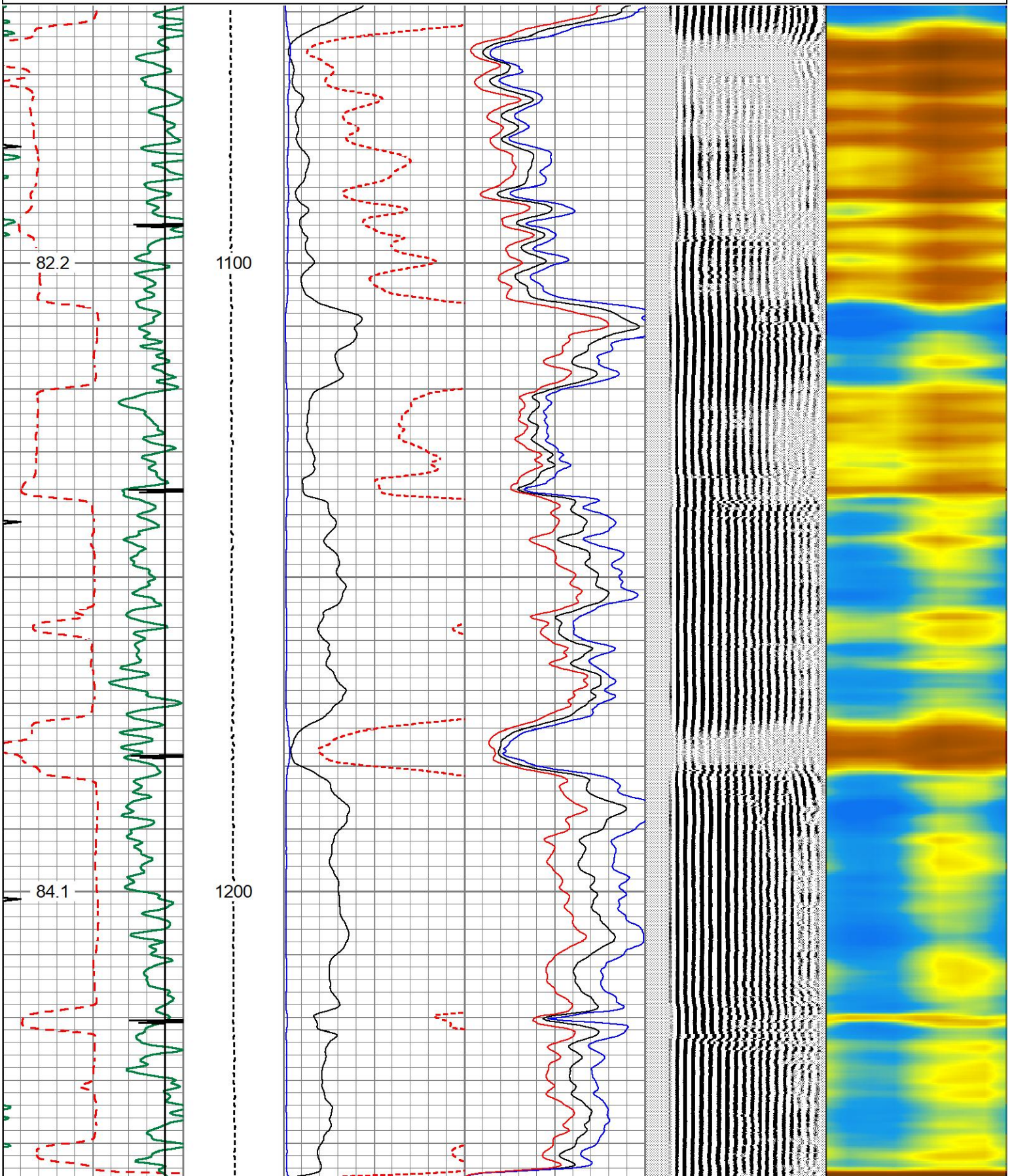
275	TT (usec)	175
0	GR	150
9	CCL	-1
0	LSPD (ft/min)	100

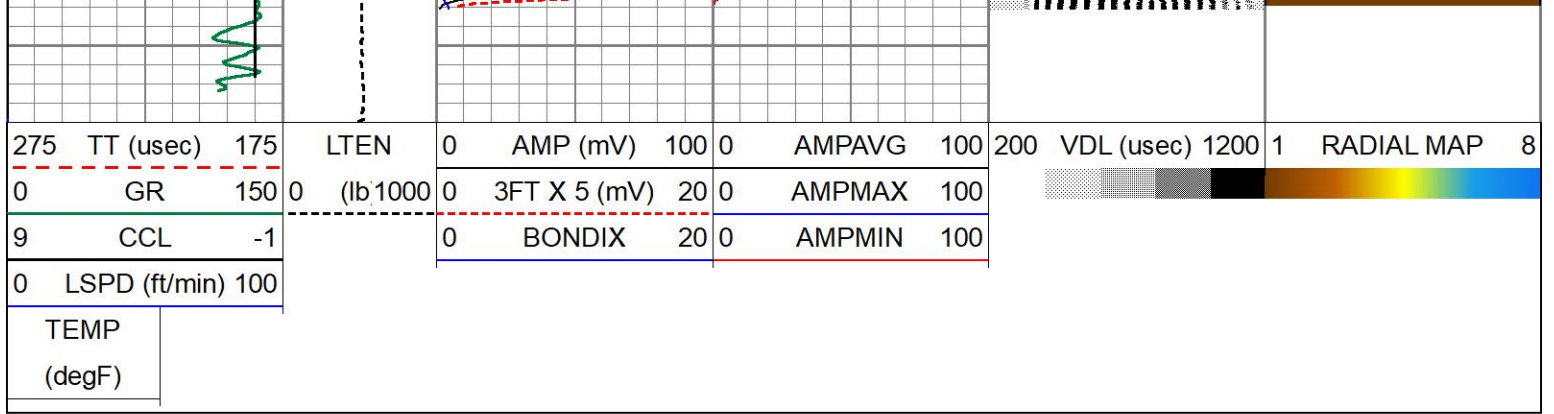
LTEN	0	AMP (mV)	100	0	AMPAVG	100
(lb/1000)	0	3FT X 5 (mV)	20	0	AMPMAX	100
	0	BONDIX	20	0	AMPMIN	100

200	VDL (usec)	1200	1	RADIAL MAP	8
-----	------------	------	---	------------	---



TEMP  
(degF)





### Calibration Report

Database File state 30-16.db  
 Dataset Pathname pass7  
 Dataset Creation Fri Jun 11 16:13:17 2021

### Gamma Ray Calibration Report

Serial Number: 234GR4-269  
 Tool Model: Tek-Co 2 3/4  
 Performed: (Not Performed)

Calibrator Value: 1.0

Background Reading: 0.0 cps  
 Calibrator Reading: 1.0 cps

Sensitivity: 1.0000 /cps

### Segmented Cement Bond Log Calibration Report

Serial Number: 234RIBT-3020  
 Tool Model: 275 Temp JS

Calibration Casing Diameter: 4.500 in  
 Calibration Depth: 606.309 ft

Master Calibration, performed Fri Jun 11 15:54:07 2021:

	Raw (v)		Calibrated (mv)		Results	
	Zero	Cal	Zero	Cal	Gain	Offset
3'	-0.005	1.453	1.000	81.196	54.977	1.287
CAL	-0.005	1.025				
5'	-0.005	2.263	1.000	81.196	35.369	1.166
SUM						
S1	-0.005	1.336	0.000	100.000	74.555	0.403
S2	-0.005	1.291	0.000	100.000	77.174	0.407
S3	-0.005	1.267	0.000	100.000	78.605	0.407
S4	-0.005	1.278	0.000	100.000	77.898	0.421
S5	-0.005	1.281	0.000	100.000	77.738	0.400
S6	-0.005	1.294	0.000	100.000	76.942	0.410
S7	-0.005	1.417	0.000	100.000	70.330	0.359
S8	-0.005	1.344	0.000	100.000	74.108	0.383

Internal Reference Calibration, performed (Not Performed):

	Raw (v)		Calibrated (v)		Results	
	Zero	Cal	Zero	Cal	Gain	Offset

CAL 0.000 0.000 -0.005 1.025 1.000 0.000

Air Zero Calibration, performed Tue Sep 22 07:10:29 2020:

	Raw (v)	Calibrated (v)	Results
	Zero	Zero	Offset
3'	0.000	0.000	0.000
5'	0.000	0.000	0.000
SUM			
S1	0.000	0.000	0.000
S2	0.000	0.000	0.000
S3	0.000	0.000	0.000
S4	0.000	0.000	0.000
S5	0.000	0.000	0.000
S6	0.000	0.000	0.000
S7	0.000	0.000	0.000
S8	0.000	0.000	0.000

Temperature Calibration Report

Serial Number: 234RIBT-3020  
 Tool Model: 275 Temp JS  
 Performed: Mon Sep 14 13:01:35 2020

	Reference	Reading
Low Reference:	0.00 degF	0.00 usec
High Reference:	1.00 degF	1.00 usec

Gain: 0.33  
 Offset: 0.00  
 Delta Spacing: 1



Company	ANADARKO PETROLEUM CORP.
Well	STATE 30-16
Field	WATTENBERG
County	WELD COUNTY
State	COLORADO
Country	USA