

XEM GAMMA RAY

1in/100ft Measured Depth

Final Print

Recorded Mode

Company: PDC Energy Inc	Well: Elkhead 8N	Field Name: Wattenberg
Country Name: United States	State Name: Colorado	County Name: Weld
Latitude: 40°15'19.181"N	Longitude: 104°42'16.435"W	Spud Date: 20-Aug-2020
Log Interval: 1698.00--15660.01(ft)	Depth Source: Driller's Depth	Log Measured From: Drill Floor
Drill Floor Elevation: 4996(ft)	Ground Level Elevation: 4968(ft)	Permanent Datum: Sea Level
API Number: 05-123-48482	Rig Name: Ensign 142	Rig Type: Land
Job Number: 21CC00075	Print Type: Final Print	Northings: 1336853.33(ft)
Coordinate System: NAD83 Colorado State Plane, Northern Zone, US Feet		Easting: 3222006.61 (ft)

Disclaimer

THE USE OF AND RELIANCE UPON THIS RECORDED-DATA BY THE HEREIN NAMED COMPANY (AND ANY OF ITS AFFILIATES, PARTNERS, REPRESENTATIVES, AGENTS, CONSULTANTS AND EMPLOYEES) IS SUBJECT TO THE TERMS AND CONDITIONS AGREED UPON BETWEEN SCHLUMBERGER AND THE COMPANY, INCLUDING: (a) RESTRICTIONS ON USE OF THE RECORDED-DATA; (b) DISCLAIMERS AND WAIVERS OF WARRANTIES AND REPRESENTATIONS REGARDING COMPANY'S USE AND RELIANCE UPON THE RECORDED-DATA; AND (c) CUSTOMER'S FULL AND SOLE RESPONSIBILITY FOR ANY INFERENCE DRAWN OR DECISION MADE IN CONNECTION WITH THE USE OF THIS RECORDED-DATA.

Operational Run Summary

Notes

Run 1 (Bit Size: 8.5 in)

DateTime Log Started	09-Apr-2021 04:33:29	DateTime Log Finished	11-Apr-2021 16:15:26
Start Depth (ft)	1725	Stop Depth (ft)	15660
Mud Type	Oil Based Mud	Mud Density (lbm/gal)	10.2
Potassium (%)	0	Barite	Yes
GR Sensor Offset (ft)	24.58	Calibration Coefficient	0.52
DNI Sensor Offset (ft)	19.99		

Log

Description: XEM GAMMA RAY Format: XEM_GR_WOB_PDC Index Scale: 1in/100ft Index Unit: ft Index Type: Measured Depth
 Creation Date: 12-Apr-2021

TVD_RT	Depth	ROP5_RT	ZTMP_RT,XEM
1,500 ft, Borehole 7,500	1 : 100	0 ft/h, Borehole 1,000	0 degF, Borehole 300

GR_RM,XEM

in : ft

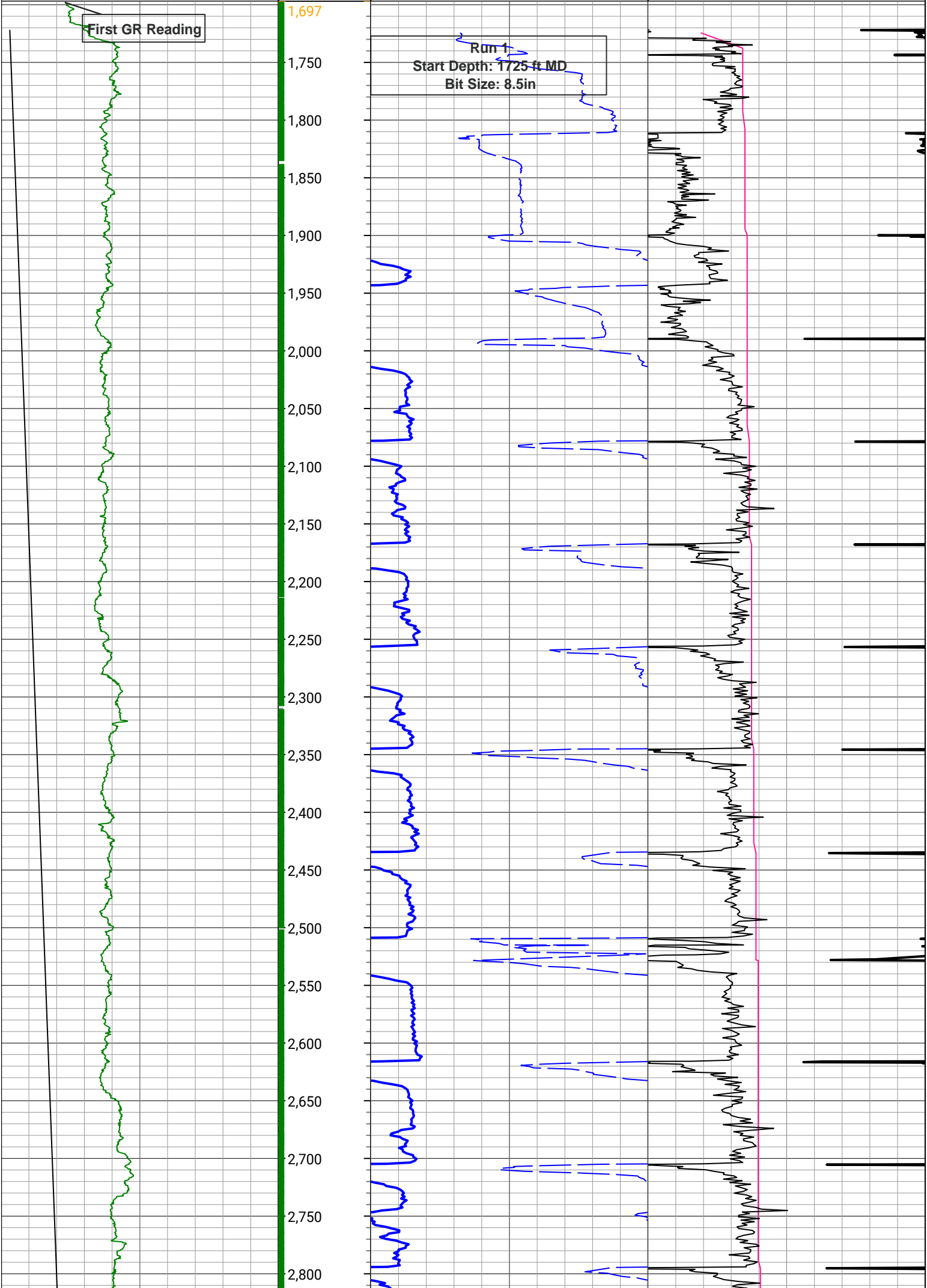
SWOB_RT

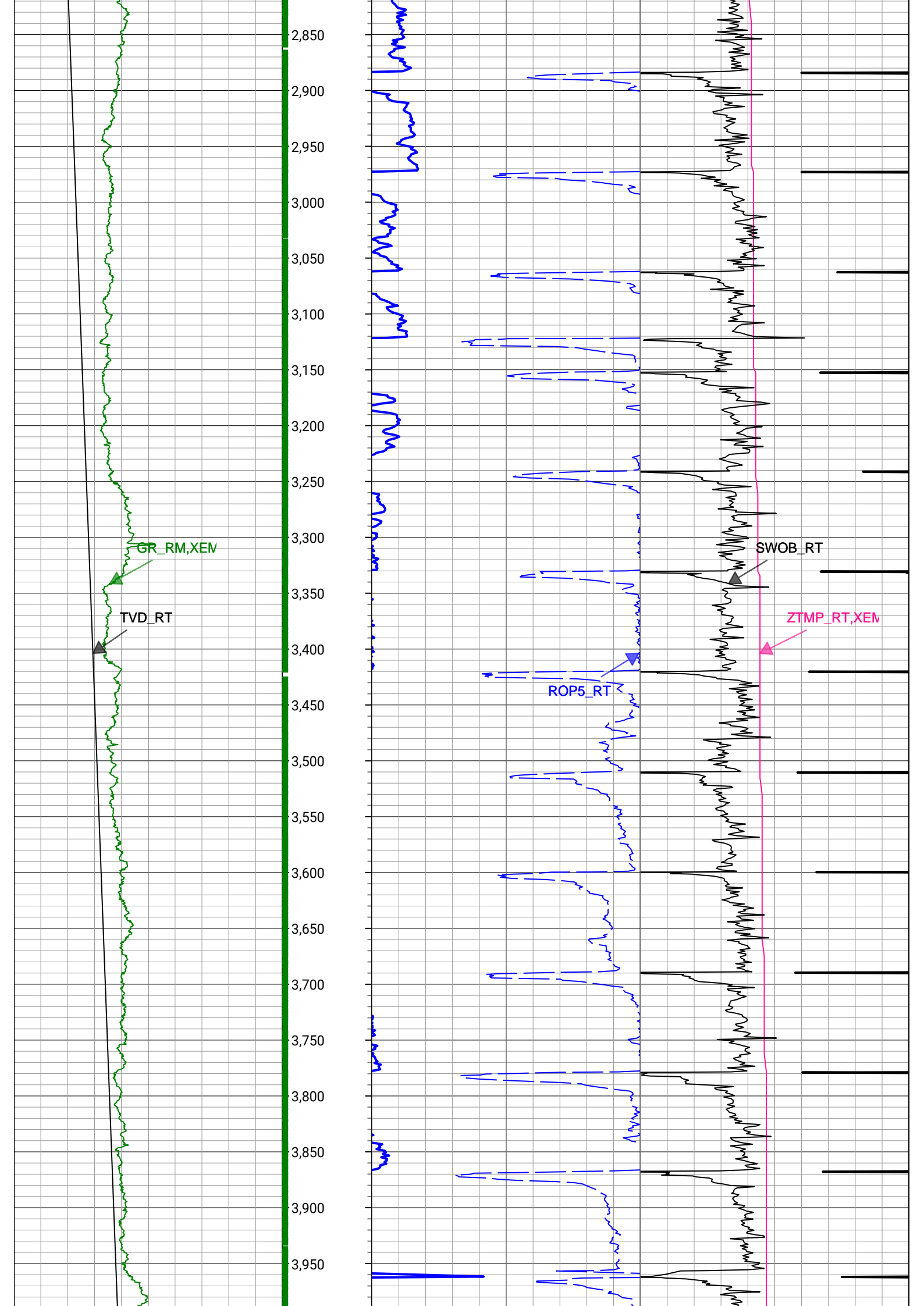
0 gAPI, Borehole 300

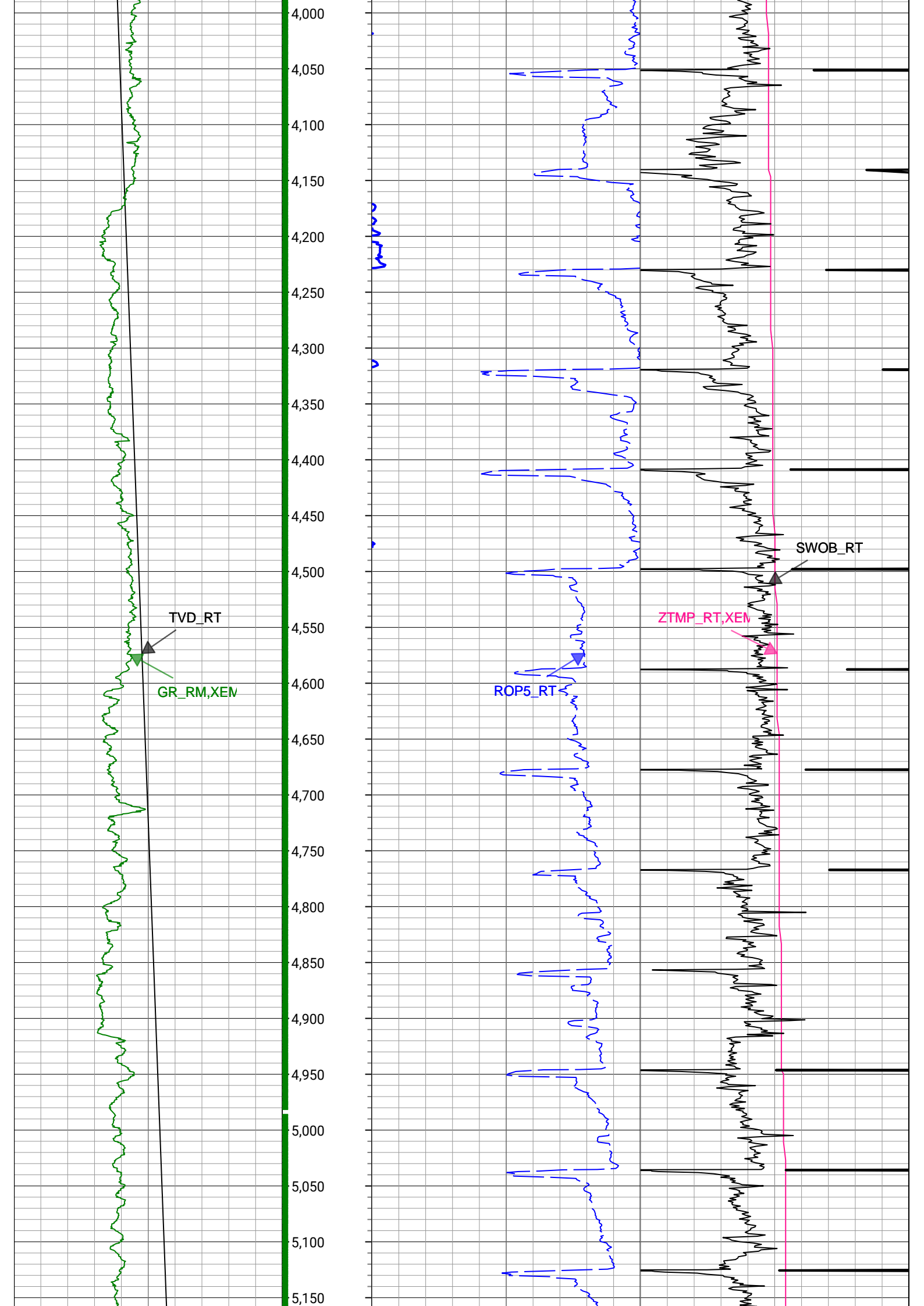
0 1000 lbf, Borehole 50

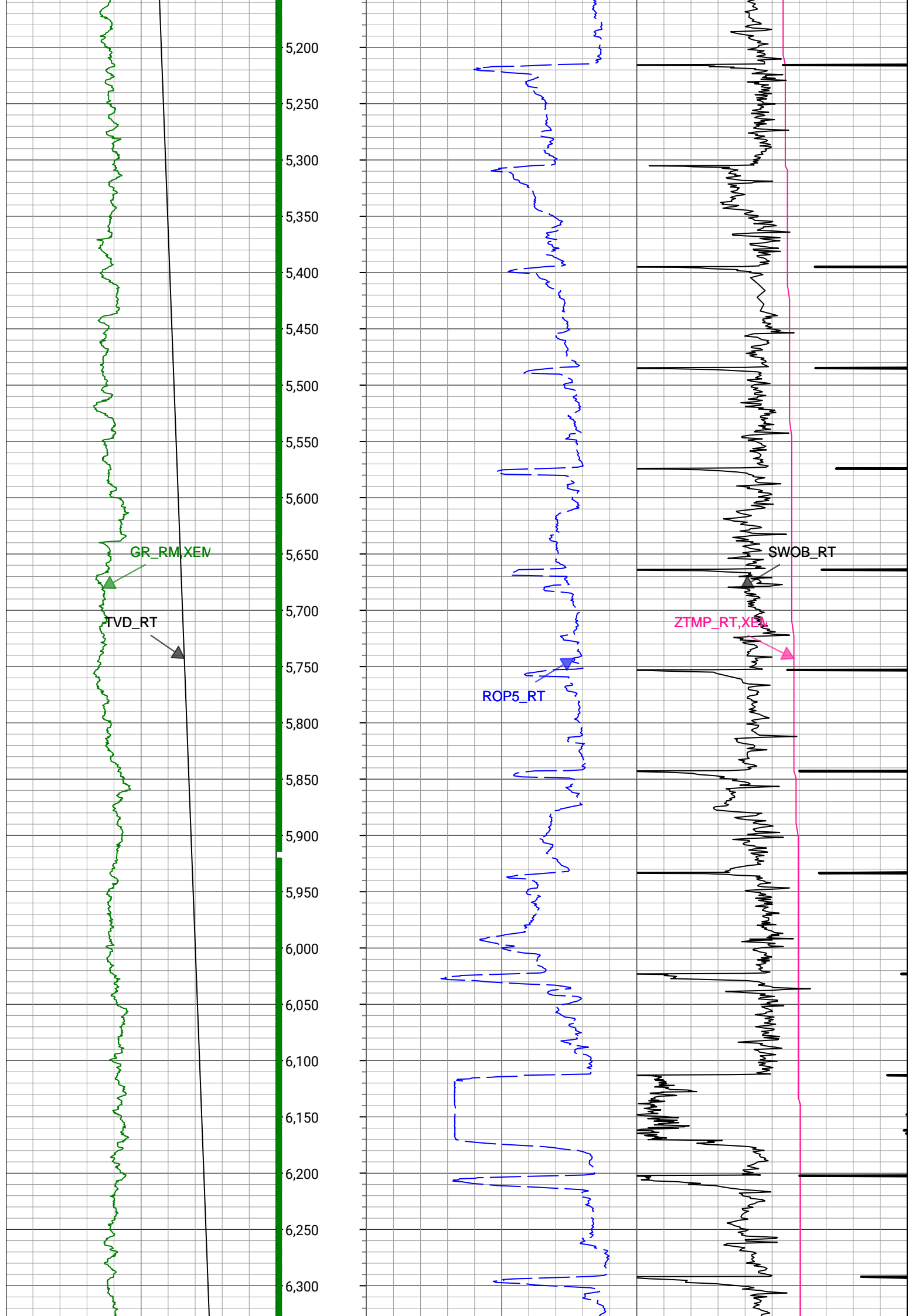
First GR Reading

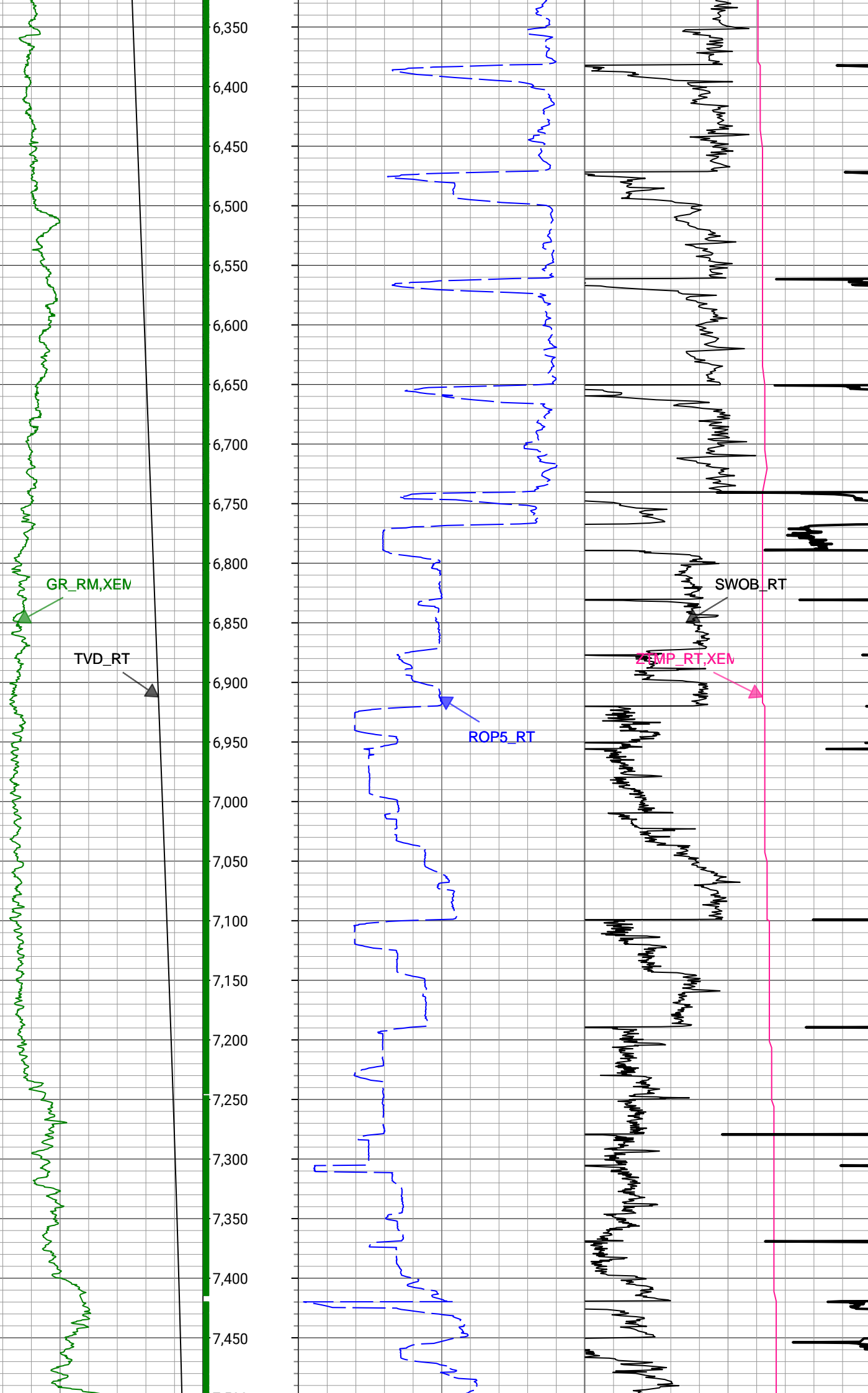
Run 1
Start Depth: 1725 ft MD
Bit Size: 8.5in

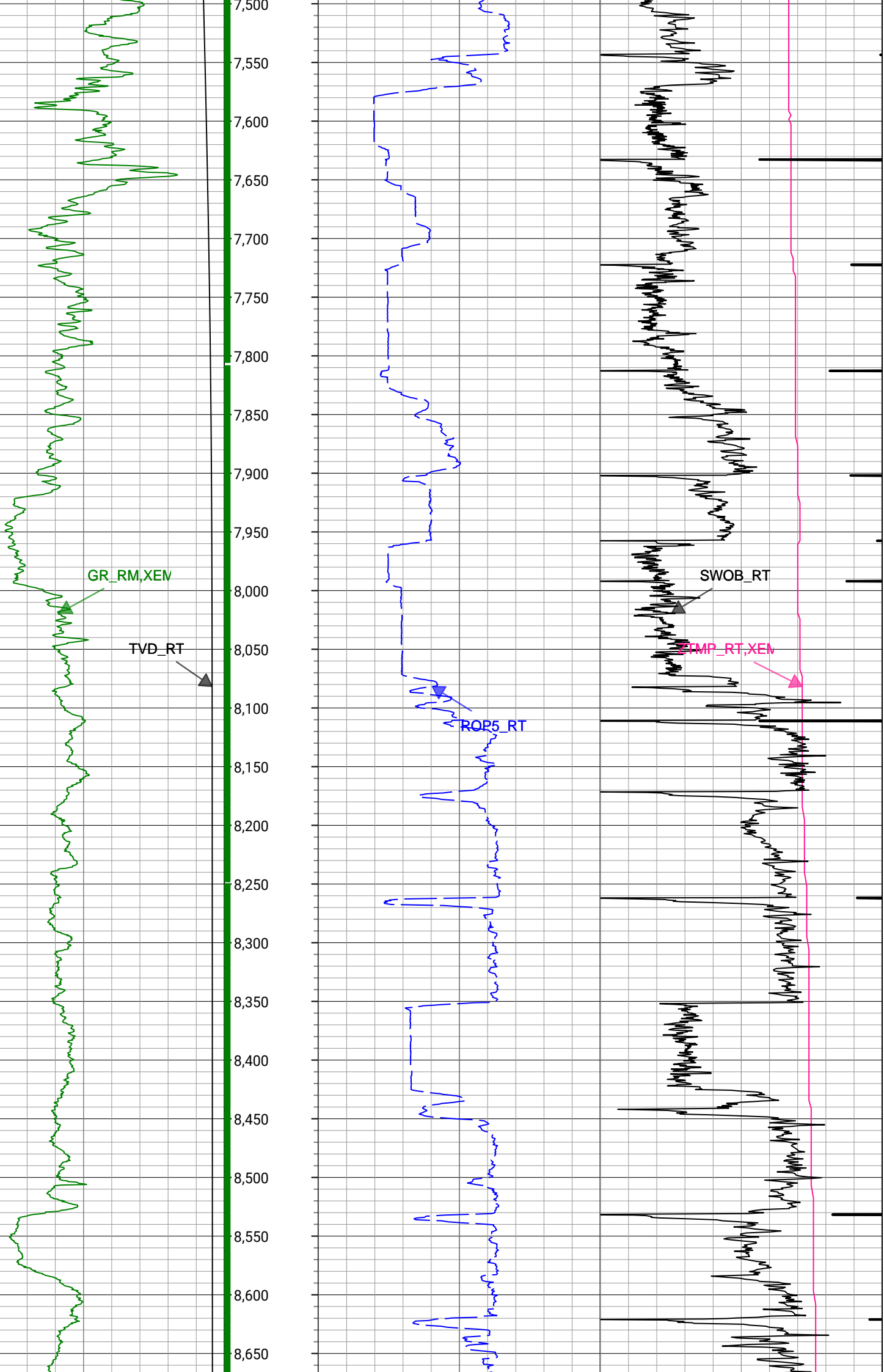


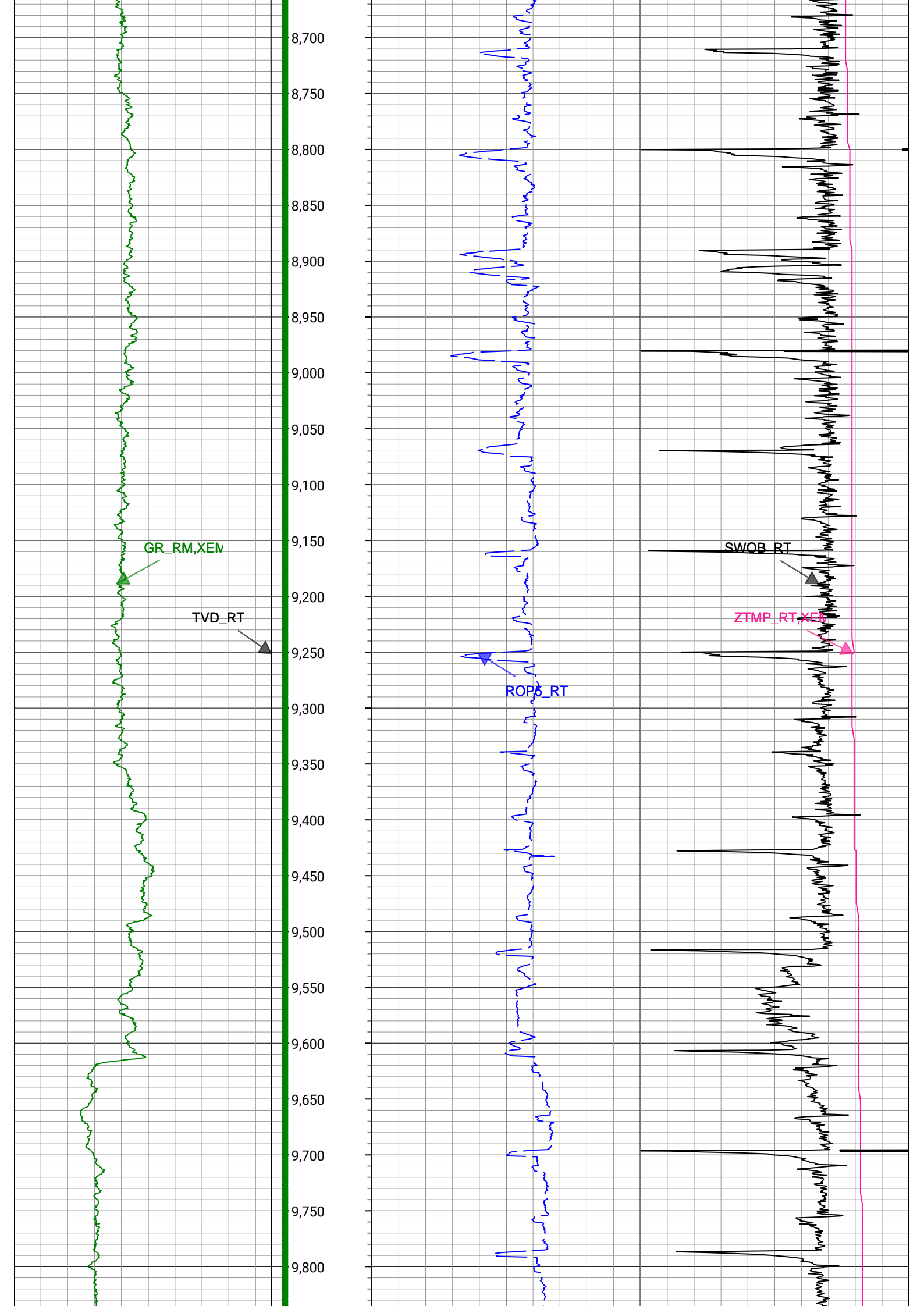


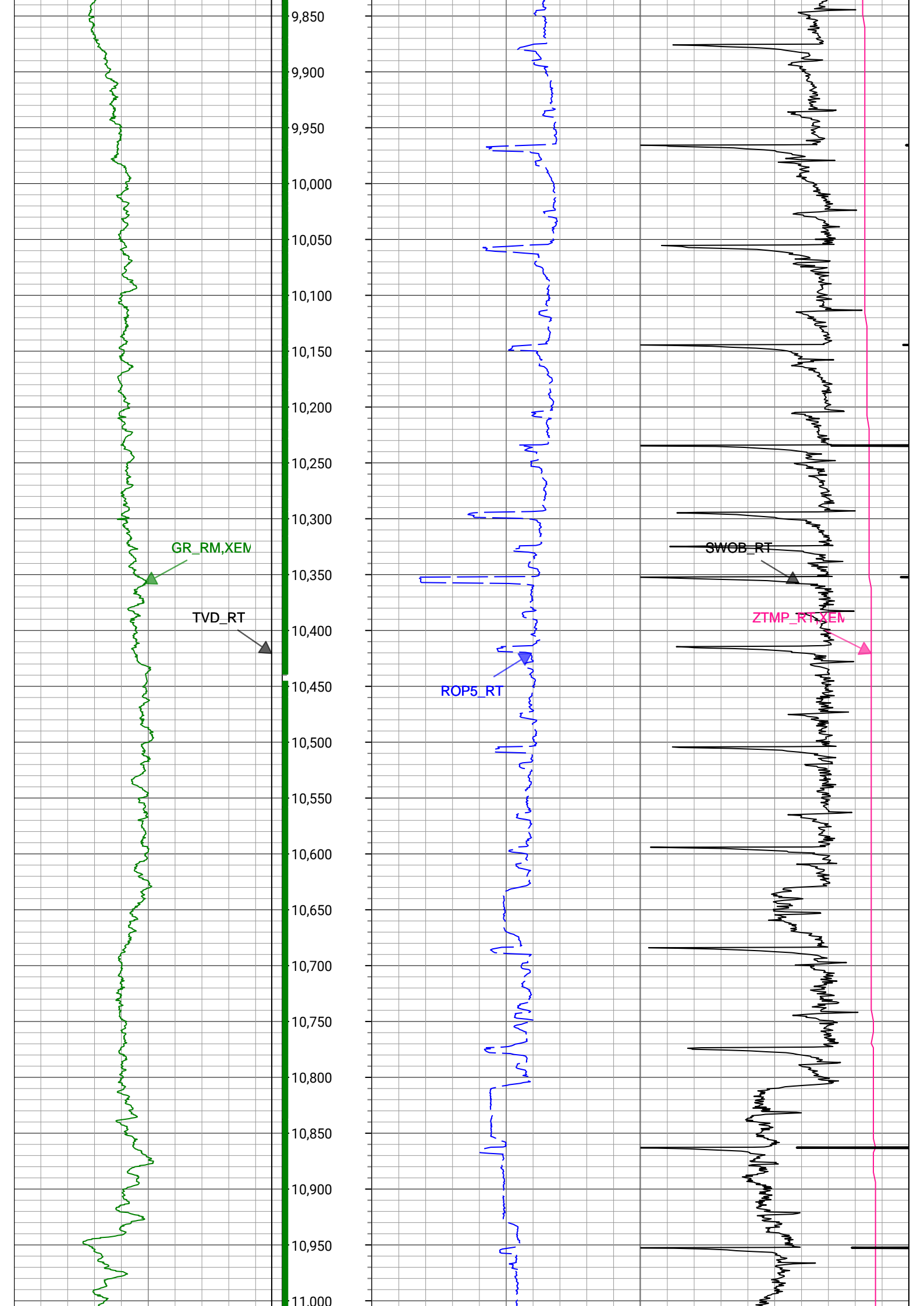


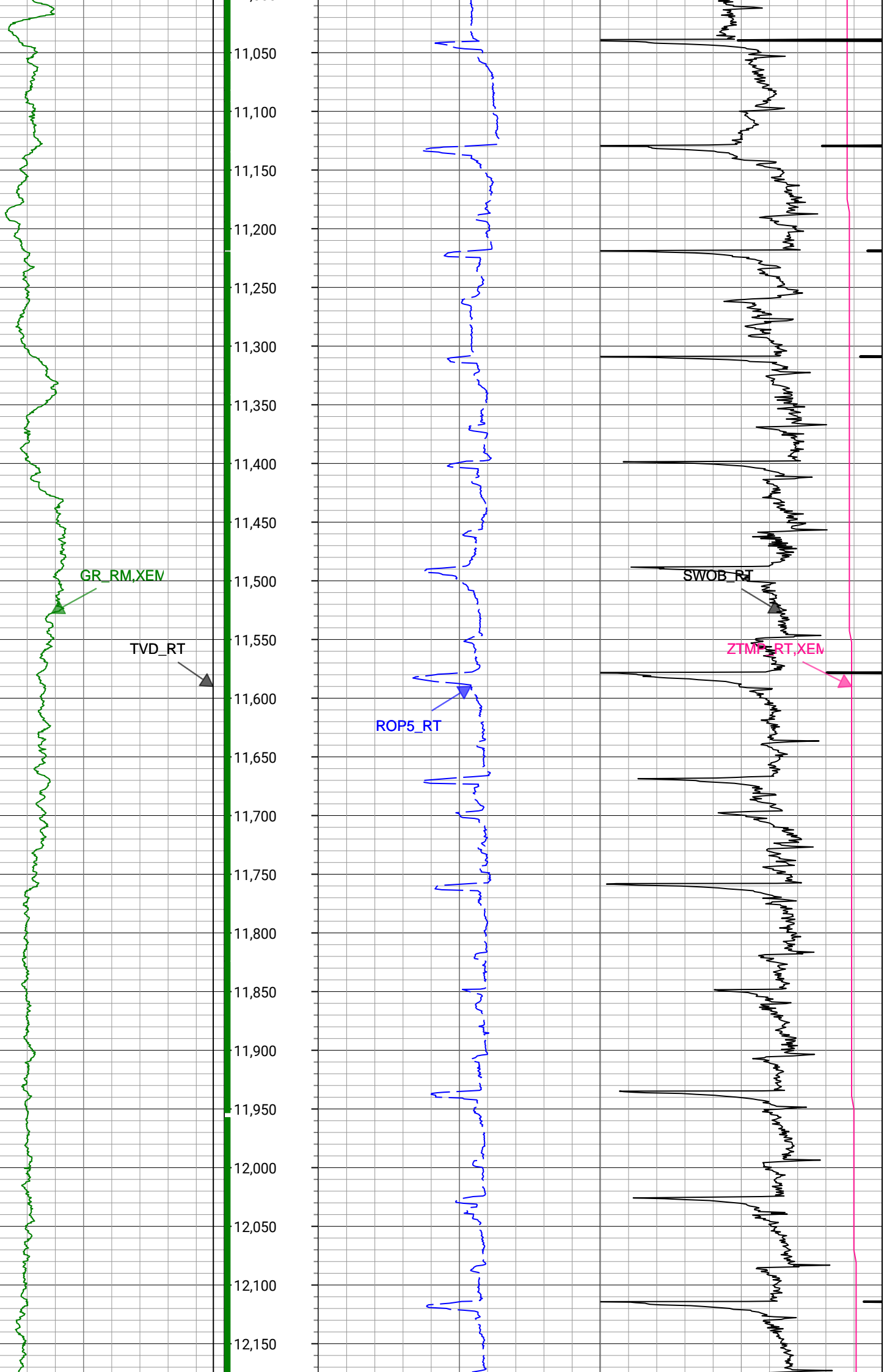


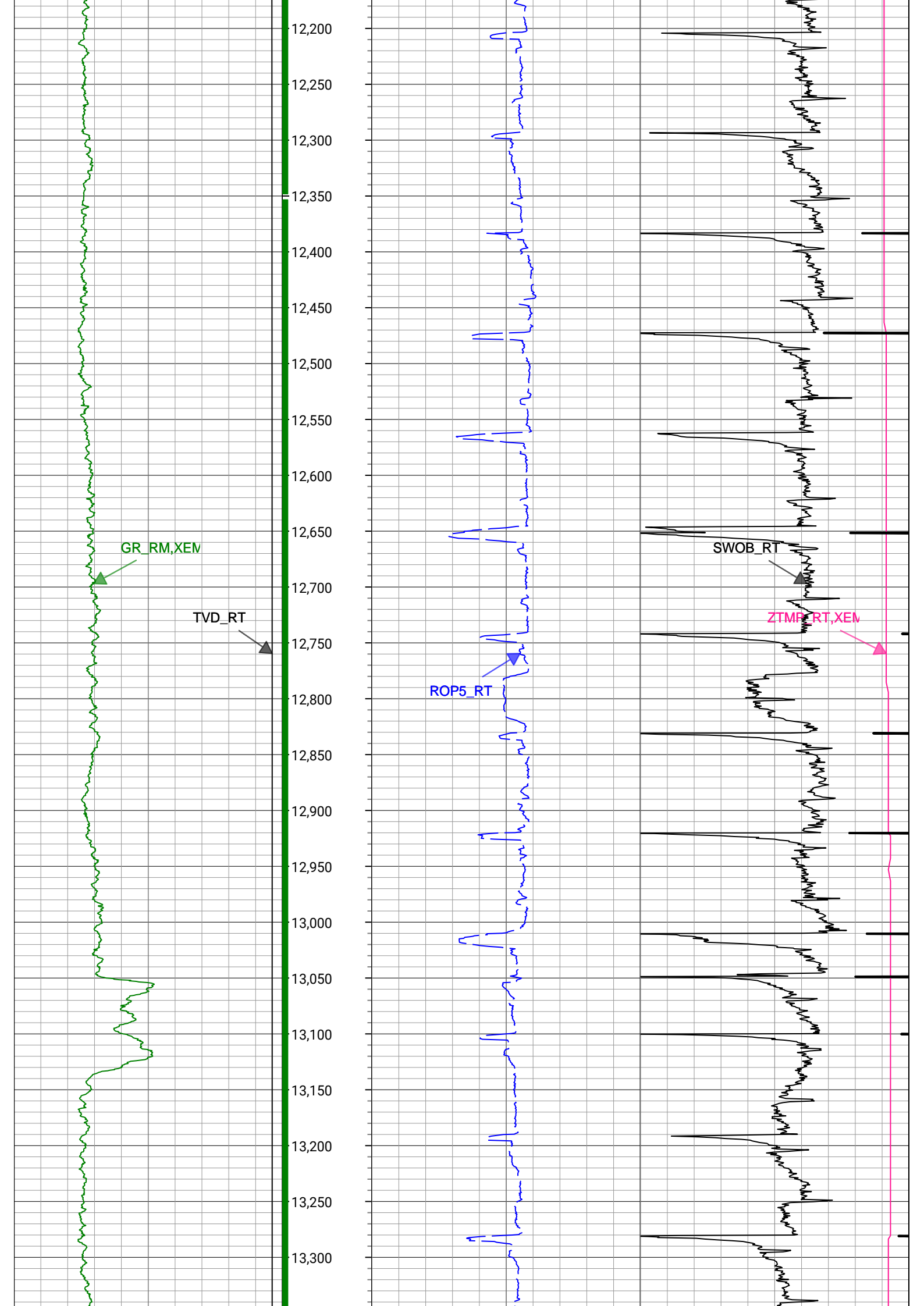


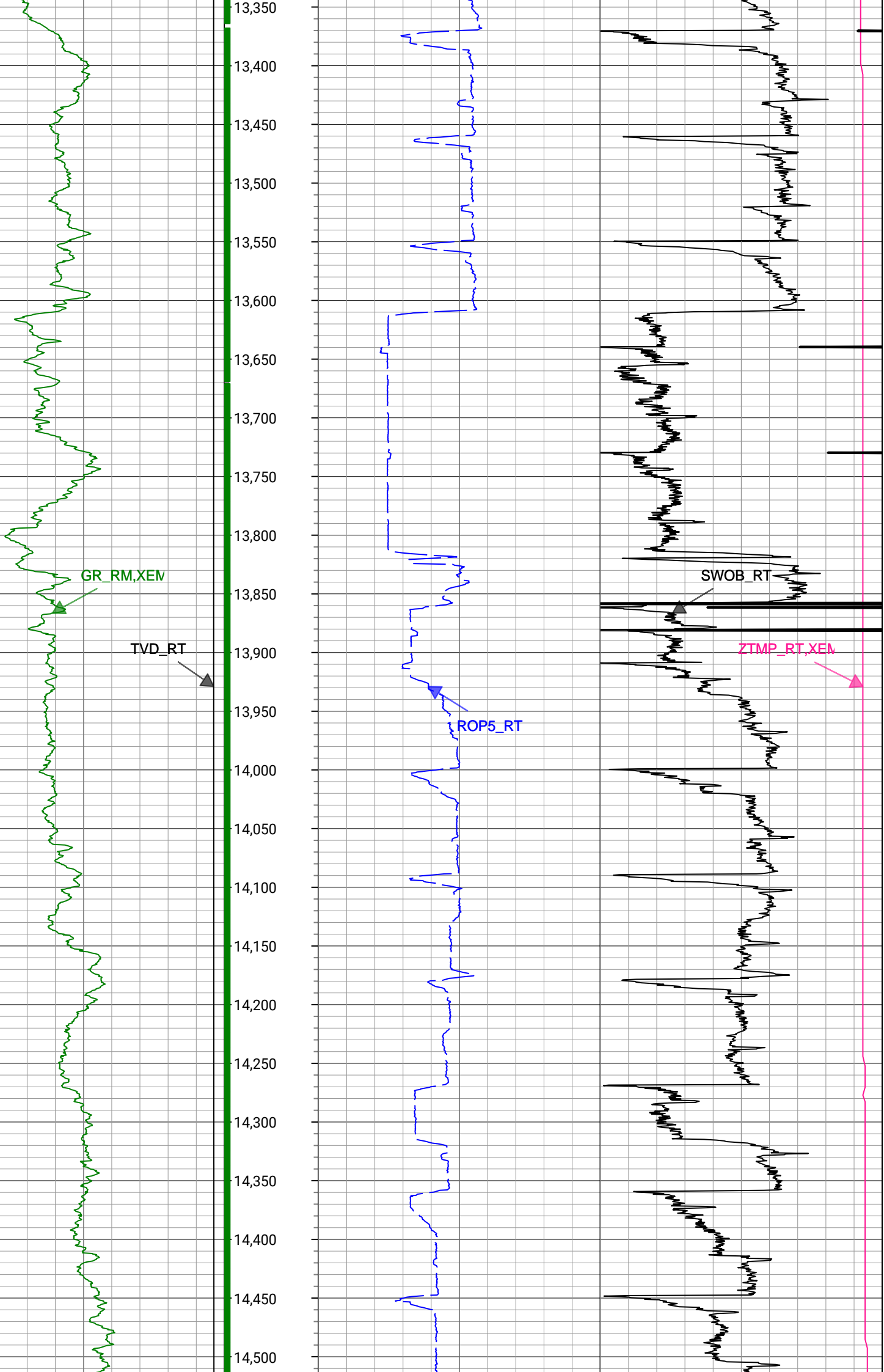


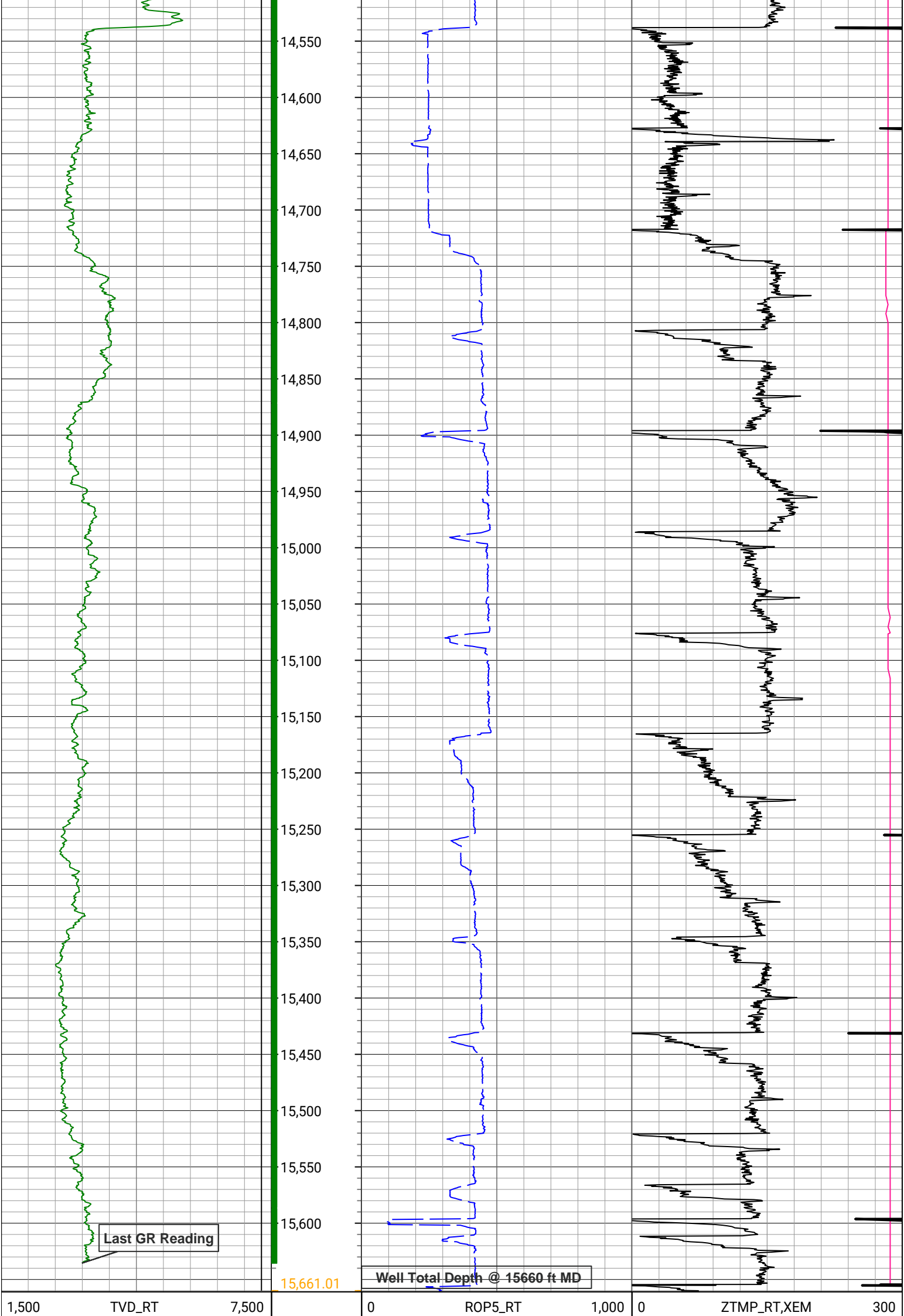












ft, Borehole		Depth (ft)	ft/h, Borehole			degF, Borehole		
0	GR_RM,XEM 300					0	SWOB_RT	50
gAPI, Borehole					1000 lbf, Borehole			
Description: XEM GAMMA RAY		Format: XEM_GR_WOB_PDC		Index Scale: 1in/100ft		Index Unit: ft		Index Type: Measured Depth
Creation Date: 12-Apr-2021								

Survey Record

Survey Calculation

North Reference: True North

Tie In Point

Measured Depth: 0(ft) Inclination: 0(deg) Azimuth: 0(deg)
 True Vertical Depth: 0(ft) North Displacement: 0(ft) East Displacement: 0(ft)

D&I Inits - Run - 1

Geomagnetic Model: HDGM 2021 Geomagnetic Date: 07-Apr-2021 23:00:00
 Location B: 51785(nT) Location G: 999.048(mgn)
 Magnetic Dip: 66.56(deg) Magnetic Dec: 7.865(deg)
 Total Correction: 7.865

MD(ft)	Incl(deg)	Azim(deg)	TVD(ft)	V Sec(ft)	N/-S(ft)	E/-W(ft)	DLS (deg/100ft)	Closure Distance (ft)	Closure Azimuth (deg)	Tool Type
0	0	0	0	0.00	0	0	0.00			TIP
155	0.18	110.28	155	-0.02	-0.08	0.23	0.12	0.24	110.28	MWD
247	1.41	113.98	246.99	-0.2	-0.59	1.4	1.34	1.52	113.04	MWD
338	3.25	96.57	337.91	0.05	-1.34	4.98	2.14	5.16	105.1	MWD
458	4.57	103.08	457.63	0.8	-2.82	13.02	1.16	13.32	102.2	MWD
547	6.42	106.07	546.22	0.92	-5	21.26	2.1	21.84	103.23	MWD
636	6.77	96.57	634.63	1.71	-6.97	31.25	1.29	32.02	102.58	MWD
725	8.09	97.45	722.88	3.43	-8.39	42.67	1.49	43.49	101.12	MWD
814	9.67	100.27	810.81	5.02	-10.53	56.24	1.84	57.21	100.61	MWD
904	11.17	103.25	899.32	6.09	-13.88	72.16	1.77	73.48	100.89	MWD
993	12.22	107.65	986.48	6.12	-18.71	89.53	1.55	91.46	101.8	MWD
1078	12.93	111.52	1069.44	4.83	-24.92	106.95	1.3	109.81	103.12	MWD
1169	13.72	116.96	1157.99	1.67	-33.55	126.04	1.63	130.43	104.91	MWD
1258	15.3	117.84	1244.15	-2.88	-43.82	145.83	1.79	152.27	106.73	MWD
1347	16.09	115.91	1329.83	-7.56	-54.69	167.31	1.06	176.02	108.1	MWD
1437	17.32	117.14	1416.03	-12.46	-66.26	190.45	1.42	201.64	109.18	MWD
1527	18.2	116.61	1501.74	-17.81	-78.66	214.94	0.99	228.88	110.1	MWD
1617	19.35	115.56	1586.95	-23.05	-91.39	240.95	1.33	257.7	110.77	MWD
1658	19.61	115.21	1625.6	-25.36	-97.25	253.31	0.7	271.34	111	MWD
1789	18.34	113.78	1749.49	-31.94	-114.93	292.06	1.03	313.86	111.48	Manual
1879	18.06	111.76	1834.99	-35.43	-125.81	317.97	0.77	341.96	111.59	Manual
1968	19.89	111.49	1919.15	-38.44	-136.47	344.88	2.06	370.9	111.59	Manual
2058	20.43	114.86	2003.63	-42.52	-148.68	373.37	1.42	401.89	111.71	Manual
2147	20.96	115.45	2086.89	-47.72	-162.05	401.84	0.64	433.29	111.96	Manual
2236	20.81	118.57	2170.05	-53.97	-176.46	430.1	1.26	464.89	112.31	Manual
2325	20.31	119.81	2253.38	-61.29	-191.7	457.39	0.74	495.93	112.74	Manual
2415	20.09	120.15	2337.84	-68.99	-207.22	484.31	0.28	526.78	113.16	Manual
2505	20.87	117.49	2422.15	-76.15	-222.39	511.9	1.35	558.12	113.48	Manual
2594	20.64	118.38	2505.38	-82.87	-237.16	539.76	0.44	589.56	113.72	Manual
2684	20.75	117.64	2589.57	-89.68	-252.1	567.84	0.32	621.28	113.94	Manual

2773	19.88	119.34	2673.04	-96.54	-266.83	595	1.18	652.09	114.15	Manual
2863	20.3	119.5	2757.56	-103.9	-282.01	621.93	0.47	682.88	114.39	Manual
2952	20.7	119.26	2840.92	-111.31	-297.3	649.09	0.46	713.93	114.61	Manual
3042	20.65	119.15	2925.13	-118.76	-312.81	676.82	0.07	745.61	114.81	Manual
3132	20.74	118.94	3009.32	-126.13	-328.25	704.63	0.13	777.33	114.98	Manual
3221	21.14	116.78	3092.44	-132.86	-343.11	732.75	0.98	809.1	115.09	Manual
3311	20.25	118.69	3176.64	-139.51	-357.9	760.9	1.24	840.87	115.19	Manual
3401	20.72	117.95	3260.94	-146.42	-372.84	788.63	0.6	872.32	115.3	Manual
3491	20.88	117.62	3345.08	-153.15	-387.73	816.9	0.22	904.25	115.39	Manual
3581	19.35	116.16	3429.59	-159.2	-401.74	844.5	1.79	935.19	115.44	Manual
3670	20.98	116.63	3513.13	-164.93	-415.39	871.97	1.84	965.86	115.47	Manual
3760	20.45	117.72	3597.31	-171.29	-429.92	900.3	0.73	997.68	115.53	Manual
3849	20.69	117.41	3680.64	-177.75	-444.39	928.02	0.3	1028.93	115.59	Manual
3939	19.9	118.45	3765.05	-184.39	-459.01	955.6	0.96	1060.12	115.66	Manual
4029	20.97	116.12	3849.39	-190.72	-473.4	983.53	1.49	1091.53	115.7	Manual
4118	21.05	116.03	3932.47	-196.5	-487.42	1012.19	0.1	1123.43	115.71	Manual
4208	20.99	116.12	4016.48	-202.34	-501.61	1041.19	0.08	1155.72	115.72	Manual
4297	20.23	118.27	4099.78	-208.61	-515.92	1069.05	1.2	1187.03	115.76	Manual
4387	19.74	119.01	4184.36	-215.52	-530.66	1096.05	0.61	1217.75	115.83	Manual
4476	20.3	116.54	4267.99	-221.92	-544.85	1123	1.14	1248.2	115.88	Manual
4566	20.12	116.94	4352.45	-227.9	-558.83	1150.77	0.25	1279.28	115.9	Manual
4655	19.69	117.43	4436.13	-233.97	-572.68	1177.73	0.52	1309.58	115.93	Manual
4745	19.7	117.17	4520.86	-240.1	-586.59	1204.68	0.1	1339.9	115.96	Manual
4835	20.32	116.32	4605.43	-246.03	-600.44	1232.18	0.76	1370.69	115.98	Manual
4924	20.17	116.07	4688.93	-251.67	-614.04	1259.81	0.19	1401.49	115.98	Manual
5013	20	116.99	4772.52	-257.44	-627.69	1287.16	0.4	1432.05	116	Manual
5103	19.72	117.18	4857.17	-263.51	-641.61	1314.38	0.32	1462.62	116.02	Manual
5193	19.81	114.84	4941.87	-268.98	-654.95	1341.73	0.88	1493.05	116.02	Manual
5283	19.87	116.92	5026.53	-274.41	-668.28	1369.21	0.79	1523.59	116.02	Manual
5373	19.62	117.42	5111.23	-280.49	-682.17	1396.26	0.34	1553.99	116.04	Manual
5462	19.87	118.4	5195	-286.88	-696.24	1422.83	0.47	1584.04	116.07	Manual
5552	19.73	117.96	5279.68	-293.5	-710.64	1449.7	0.23	1614.51	116.11	Manual
5642	19.71	117.99	5364.4	-299.99	-724.88	1476.52	0.02	1644.86	116.15	Manual
5731	18.74	120.29	5448.44	-306.81	-739.14	1502.12	1.38	1674.12	116.2	Manual
5820	18.84	119.38	5532.7	-313.84	-753.4	1526.98	0.35	1702.73	116.26	Manual
5910	18.94	116.11	5617.85	-319.95	-766.96	1552.76	1.18	1731.85	116.29	Manual
6000	18.79	120.77	5703.02	-326.39	-780.8	1578.33	1.68	1760.91	116.32	Manual
6090	18.9	117.13	5788.2	-333.07	-794.86	1603.76	1.31	1789.93	116.36	Manual
6180	18.99	120.56	5873.33	-339.75	-808.96	1629.34	1.24	1819.11	116.4	Manual
6270	20.88	117.71	5957.93	-346.87	-823.86	1656.15	2.36	1849.76	116.45	Manual
6359	20.09	117.47	6041.3	-353.32	-838.29	1683.76	0.89	1880.9	116.47	Manual
6449	19.92	119.77	6125.88	-360.23	-853.03	1710.78	0.89	1911.66	116.5	Manual
6539	20.04	119.93	6210.46	-367.78	-868.34	1737.45	0.15	1942.36	116.55	Manual
6628	20.29	117.03	6294.01	-374.6	-882.96	1764.42	1.16	1973.01	116.58	Manual
6717	20.02	119.37	6377.56	-381.26	-897.44	1791.44	0.96	2003.66	116.61	Manual
6807	19.44	111.69	6462.29	-386.49	-910.54	1818.79	2.95	2033.98	116.59	Manual
6896	16.19	84.89	6547.15	-383.65	-914.91	1844.96	9.81	2059.35	116.38	Manual
6986	18.87	64.24	6633.05	-369.57	-907.46	1870.59	7.48	2079.09	115.88	Manual
7076	22.63	42.35	6717.32	-344.43	-888.31	1895.41	9.5	2093.24	115.11	Manual
7165	27.18	29.78	6798.08	-309.38	-857.97	1917.07	7.82	2100.3	114.11	Manual

7252	32.7	27.72	6873.44	-267.1	-819.89	1937.88	6.45	2104.19	112.93	Manual
7342	39.17	22.67	6946.29	-215.05	-772.08	1960.17	7.9	2106.75	111.5	Manual
7431	47.5	18.87	7010.98	-154.28	-714.99	1981.66	9.8	2106.7	109.84	Manual
7520	52.9	14.88	7067.94	-85.97	-649.58	2001.41	6.97	2104.18	107.98	Manual
7610	57.96	11.17	7119	-11.98	-577.4	2018.03	6.57	2099.01	105.97	Manual
7700	63.85	8.08	7162.76	66.17	-499.91	2031.11	7.2	2091.72	103.83	Manual
7789	71.88	6.7	7196.26	147.69	-418.22	2041.67	9.14	2084.07	101.58	Manual
7879	79.5	6.37	7218.49	233.73	-331.64	2051.59	8.47	2078.22	99.18	Manual
7969	84.67	5.35	7230.88	321.55	-242.99	2060.68	5.85	2074.96	96.73	Manual
8059	88.24	2.94	7236.45	409.55	-153.42	2067.17	4.78	2072.85	94.24	Manual
8149	89.17	359.45	7238.48	496.67	-63.48	2069.04	4.01	2070.02	91.76	Manual
8239	89.15	358.08	7239.8	582.78	26.49	2067.1	1.52	2067.27	89.27	Manual
8328	89.06	359.11	7241.19	667.86	115.45	2064.92	1.16	2068.15	86.8	Manual
8418	89.78	358.67	7242.1	754.04	205.43	2063.18	0.94	2073.38	84.31	Manual
8508	89.71	359.27	7242.5	840.25	295.41	2061.56	0.67	2082.62	81.85	Manual
8597	89.68	0.39	7242.98	925.89	384.41	2061.3	1.26	2096.83	79.44	Manual
8686	89.38	0.56	7243.71	1011.78	473.4	2062.03	0.39	2115.68	77.07	Manual
8776	89.39	0.16	7244.67	1098.6	563.4	2062.6	0.44	2138.16	74.72	Manual
8865	89.5	0.02	7245.53	1184.33	652.39	2062.74	0.2	2163.45	72.45	Manual
8955	89.64	1.32	7246.21	1271.28	742.38	2063.79	1.45	2193.26	70.22	Manual
9044	89.47	0.97	7246.9	1357.44	831.36	2065.57	0.44	2226.6	68.08	Manual
9134	89.48	0.23	7247.73	1444.35	921.35	2066.51	0.82	2262.6	65.97	Manual
9224	89.28	359.96	7248.7	1531.06	1011.35	2066.66	0.37	2300.85	63.92	Manual
9314	89.3	0.4	7249.81	1617.79	1101.34	2066.95	0.49	2342.05	61.95	Manual
9404	89.2	0.6	7250.99	1704.66	1191.33	2067.73	0.25	2386.37	60.05	Manual
9493	89.13	0.43	7252.29	1790.57	1280.31	2068.53	0.21	2432.7	58.24	Manual
9583	89.33	359.72	7253.5	1877.26	1370.3	2068.65	0.82	2481.34	56.48	Manual
9672	89.92	0.35	7254.08	1962.98	1459.3	2068.7	0.97	2531.62	54.8	Manual
9762	89.94	0.26	7254.19	2049.77	1549.3	2069.18	0.1	2584.93	53.18	Manual
9852	89.8	0.01	7254.4	2136.5	1639.3	2069.39	0.32	2640.02	51.61	Manual
9942	89.81	0.68	7254.7	2223.31	1729.3	2069.94	0.74	2697.24	50.12	Manual
10031	89.64	359.15	7255.13	2308.97	1818.29	2069.8	1.73	2755.05	48.7	Manual
10121	89.68	358.83	7255.66	2395.2	1908.28	2068.22	0.36	2814.08	47.3	Manual
10210	89.46	358.55	7256.33	2480.33	1997.25	2066.18	0.4	2873.7	45.97	Manual
10300	89.66	358.86	7257.02	2566.42	2087.23	2064.15	0.41	2935.51	44.68	Manual
10390	89.43	359.72	7257.74	2652.78	2177.22	2063.03	0.99	2999.4	43.46	Manual
10480	89.72	0.68	7258.4	2739.53	2267.21	2063.35	1.11	3065.56	42.3	Manual
10569	89.32	0.31	7259.15	2825.43	2356.2	2064.12	0.61	3132.46	41.22	Manual
10659	89.77	0.58	7259.87	2912.29	2446.2	2064.82	0.58	3201.15	40.17	Manual
10749	89.48	0.53	7260.45	2999.18	2536.19	2065.69	0.33	3270.98	39.16	Manual
10838	90.2	1.31	7260.7	3085.26	2625.18	2067.12	1.19	3341.34	38.22	Manual
10928	90.38	0.53	7260.25	3172.3	2715.17	2068.56	0.89	3413.37	37.3	Manual
11017	90.87	0.75	7259.28	3258.27	2804.15	2069.56	0.6	3485.16	36.43	Manual
11107	90.63	0.47	7258.1	3345.18	2894.14	2070.51	0.41	3558.52	35.58	Manual
11196	90.93	0.87	7256.89	3431.15	2983.13	2071.55	0.56	3631.86	34.78	Manual
11284	90.49	0.76	7255.8	3516.21	3071.11	2072.81	0.52	3705.16	34.02	Manual
11374	90.07	0.48	7255.36	3603.14	3161.1	2073.78	0.56	3780.63	33.27	Manual
11464	89.02	359.02	7256.07	3689.69	3251.1	2073.39	2	3855.98	32.53	Manual
11553	89.33	359.82	7257.35	3775.14	3340.08	2072.49	0.96	3930.82	31.82	Manual
11643	89.49	0.79	7259.99	3861.99	3429.99	2073.97	1.99	4007.99	31.15	Manual

11643	89.49	0.79	7258.28	3861.93	3430.08	2072.97	1.09	4007.82	31.15	Manual
11733	89.31	0.37	7259.22	3948.83	3520.07	2073.88	0.51	4085.56	30.5	Manual
11823	89.54	359.6	7260.13	4035.49	3610.06	2073.85	0.89	4163.34	29.88	Manual
11913	89.29	359.47	7261.04	4121.95	3700.05	2073.12	0.31	4241.25	29.26	Manual
12002	89.33	359.62	7262.12	4207.46	3789.04	2072.42	0.17	4318.77	28.68	Manual
12092	89.48	359.53	7263.05	4293.94	3879.04	2071.75	0.19	4397.62	28.11	Manual
12182	89.45	0.71	7263.89	4380.65	3969.03	2071.94	1.31	4477.29	27.57	Manual
12271	89.48	1.3	7264.72	4466.76	4058.01	2073.5	0.66	4557.07	27.07	Manual
12360	89.49	1.23	7265.52	4552.97	4146.99	2075.46	0.08	4637.35	26.59	Manual
12450	89.36	0.66	7266.43	4640.02	4236.97	2076.95	0.65	4718.65	26.11	Manual
12540	89.5	1.12	7267.32	4727.05	4326.95	2078.34	0.53	4800.21	25.66	Manual
12629	89.34	0.15	7268.22	4813.01	4415.94	2079.33	1.1	4881	25.21	Manual
12719	89.45	0.74	7269.17	4899.86	4505.93	2080.03	0.67	4962.86	24.78	Manual
12808	89.6	1.4	7269.91	4985.99	4594.92	2081.69	0.76	5044.47	24.37	Manual
12897	90.19	1.09	7270.07	5072.2	4683.89	2083.63	0.75	5126.44	23.98	Manual
12987	90.18	1.22	7269.78	5159.34	4773.88	2085.44	0.14	5209.5	23.6	Manual
13077	89.83	0.57	7269.77	5246.37	4863.86	2086.85	0.82	5292.65	23.22	Manual
13167	90.02	0.88	7269.89	5333.34	4953.86	2087.98	0.4	5375.91	22.85	Manual
13257	90.25	0.9	7269.68	5420.38	5043.84	2089.38	0.26	5459.48	22.5	Manual
13347	90.07	0.69	7269.43	5507.37	5133.84	2090.63	0.31	5543.19	22.16	Manual
13437	89.84	0.53	7269.5	5594.29	5223.83	2091.59	0.31	5627	21.82	Manual
13526	89.9	0.26	7269.7	5680.16	5312.83	2092.2	0.31	5709.94	21.49	Manual
13616	90.12	1.02	7269.69	5767.09	5402.82	2093.21	0.88	5794.14	21.18	Manual
13705	89.79	359.38	7269.76	5852.88	5491.82	2093.52	1.88	5877.32	20.87	Manual
13795	89.78	357.37	7270.09	5938.82	5581.78	2090.97	2.23	5960.57	20.54	Manual
13885	89.98	358.79	7270.28	6024.62	5671.72	2087.95	1.59	6043.84	20.21	Manual
13975	89.23	357.41	7270.9	6110.43	5761.67	2084.97	1.75	6127.31	19.89	Manual
14064	89.34	357.88	7272.01	6195.07	5850.59	2081.31	0.54	6209.77	19.58	Manual
14155	89.75	357.93	7272.74	6281.74	5941.52	2077.98	0.45	6294.42	19.28	Manual
14244	89.9	358.27	7273.01	6366.61	6030.47	2075.03	0.42	6377.49	18.99	Manual
14334	89.43	358.47	7273.53	6452.55	6120.44	2072.47	0.57	6461.8	18.71	Manual
14423	89.45	359.14	7274.4	6537.73	6209.41	2070.62	0.75	6545.55	18.44	Manual
14513	89.38	0.43	7275.32	6624.3	6299.4	2070.28	1.44	6630.88	18.19	Manual
14603	89.9	0.31	7275.89	6711.12	6389.4	2070.86	0.59	6716.61	17.96	Manual
14692	90.03	0.35	7275.94	6796.96	6478.4	2071.37	0.15	6801.49	17.73	Manual
14782	89.84	0.53	7276.04	6883.81	6568.4	2072.06	0.29	6887.47	17.51	Manual
14871	90.24	1.57	7275.98	6969.94	6657.38	2073.7	1.25	6972.87	17.3	Manual
14960	89.86	0.3	7275.9	7056.02	6746.37	2075.15	1.49	7058.31	17.1	Manual
15049	89.84	0.52	7276.14	7141.9	6835.36	2075.78	0.25	7143.6	16.89	Manual
15139	90.05	0.77	7276.22	7228.83	6925.36	2076.8	0.36	7230.05	16.69	Manual
15229	89.98	0.43	7276.2	7315.75	7015.35	2077.74	0.39	7316.57	16.5	Manual
15318	89.9	0.25	7276.29	7401.59	7104.35	2078.27	0.22	7402.09	16.31	Manual
15407	90.04	0.5	7276.34	7487.45	7193.35	2078.85	0.32	7487.72	16.12	Manual
15497	89.89	0.08	7276.4	7574.24	7283.35	2079.31	0.5	7574.34	15.93	Manual
15587	89.93	0.71	7276.54	7661.07	7373.34	2079.93	0.7	7661.09	15.75	Manual
15660	89.93	0.71	7276.63	7731.61	7446.34	2080.83	0	7731.61	15.61	Manual

Company: PDC Energy Inc
Well: Elkhead 8N
Field Name: Wattenberg
Country Name: United States
State Name: Colorado

County Name:

Weld

Schlumberger

XEM GAMMA RAY
1in/100ft Measured Depth
Final Print
Recorded Mode