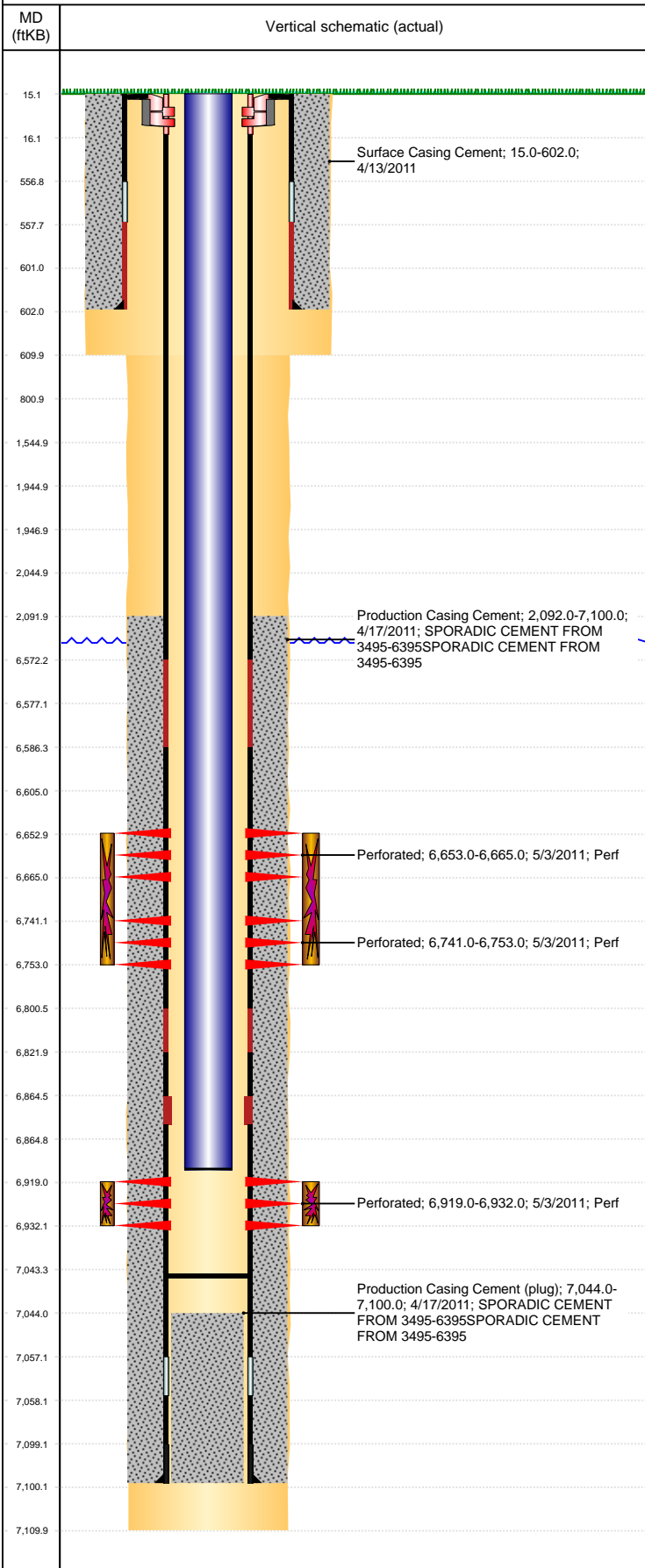


**Well Name: MARLEY C01-31D**

DEVIATED, ORIGINAL HOLE, 9/7/2021 3:58:54 PM



Well Header									
API 05-123-31224		Business Unit DJ BASIN		District 15		Well Config DEVIATED			
KB - GL / MSL (ft... 15.00		Spud Date 4/13/2011		P & A Date		Well Production Status PR		SoRT No	
Comment FRAC BAFFLE AT 6864'. DRILL THU WITH 3 7/8" BIT.									
Surface Location (Congressional)									
Qtr 3 NW	Qtr 4 NW	Section 1	Twonshp 4	Twonsh... N	Range 64	Rng E... W	Actual Latitude (°) 40.34719503	Actual Longitude (°) -104.50581739	
Wellbore Sections									
Section Des		Size (in)		Act Top, MD (ftKB)		Act Btm, MD (ftKB)			
SURFACE		12 1/4		15		610			
PRODUCTION		7 7/8		610		7,110			
Casing Strings									
Csg Des		Run Date		OD (in)	Wt/Len (lb/ft)	Grade	Top, MD (ftKB)	MD (ftKB)	
Surface		4/13/2011		8 5/8	24.00	J-55	15.0	602.0	
Production		4/17/2011		4 1/2	11.60	M-80	15.0	7,100.0	
Cement									
Des		Start Date		Top (ftKB)		Btm (ftKB)			
Surface Casing Cement		4/13/2011		15.0		602.0			
Production Casing Cement		4/17/2011		2,092.0		7,100.0			
Zone Statuses									
Zone Name		Status Date	Status	Fluid Type	Job			Prod Method	
NIOBRARA CODELL		7/19/2011	PR		DRILLING/COMPLETION - ORIGINAL, 4/12/2011...				
		7/19/2011	PR		DRILLING/COMPLETION - ORIGINAL, 4/12/2011...				
Perforation Data									
Linked Zone		Bnch/Stg	Entered Shot Total	Top (ftKB)	Btm (ftKB)	Date			
NIOBRARA, ORIGINAL HOLE		A	24	6,653.00	6,665.00	5/3/2011			
NIOBRARA, ORIGINAL HOLE		B	24	6,741.00	6,753.00	5/3/2011			
CODELL, ORIGINAL HOLE			52	6,919.00	6,932.00	5/3/2011			
Stimulation Intervals									
Zone		Start Date		Top (ftKB)		Btm (ftKB)			
NIOBRARA, ORIGINAL HOLE		5/12/2011		6,653.0		6,753.0			
CODELL, ORIGINAL HOLE		5/12/2011		6,919.0		6,932.0			
Other In Hole									
Run Date		Des		Make		OD (in)	Top (ftKB)	Btm (ftKB)	
Logs									
Date		Type				Top, MD (ftKB)	Btm, MD (ftKB)		
4/17/2011		SPECTRAL DENSITY/Pe/DSN NEUTRON/SP/ARRAY COMPENSATED TRUE RESISTIVITY/SONIC (BSAT)				603.0	7,099.0		
4/17/2011		SPECTRAL GAMMA RAY				603.0	7,099.0		
4/25/2011		CBL/CCL/GR				2,092.0	7,043.0		
Plug Back Total Depths									
Date		Type		Com			Depth (ftKB)		
4/25/2011		CEMENT PLUG		DEPTH LOGGER			7,044.0		
10/24/2011		FILL					7,043.4		