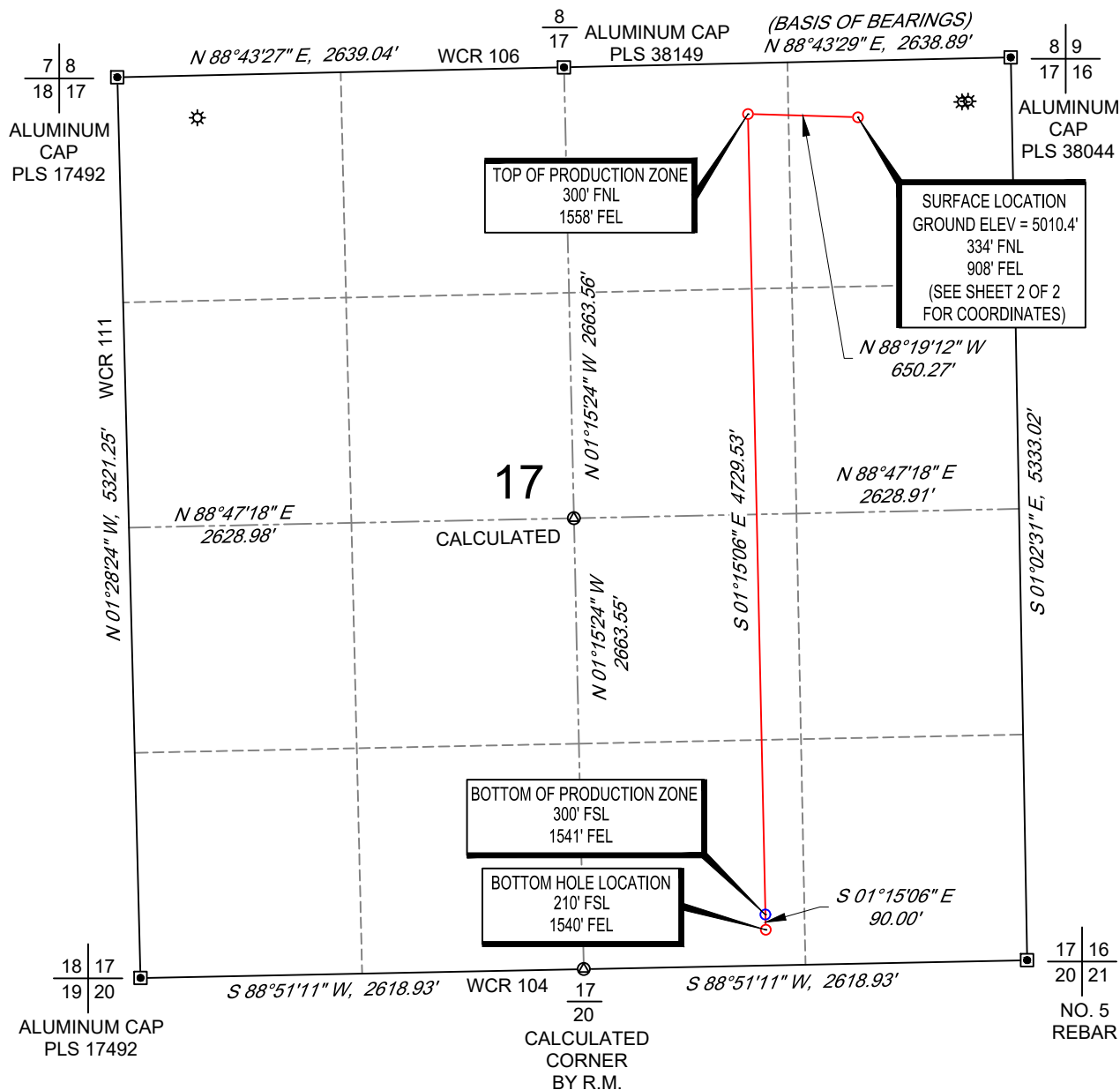


SCALE: 1" = 1000'  
0' 500' 1000'

# WELL LOCATION MAP

SHL NE/4 NE/4, SECTION 17, TOWNSHIP 9-N, RANGE 59-W  
TPZ NW/4 NE/4, SECTION 17, TOWNSHIP 9-N, RANGE 59-W  
BPZ/BHL SW/4 SE/4, SECTION 17, TOWNSHIP 9-N, RANGE 59-W  
WELD COUNTY, COLORADO



## NOTES

1. Horizontal (NAD 83) and vertical (NAVD 88) datum is based on the Trimble VRS Network. The lineal units of measurement are U.S. Survey Foot.
2. All directions, distances, and dimensions shown hereon are based on coordinates from the "Colorado coordinate system of 1983 north zone" (Title 38, Article 52 C.R.S.).
3. All section line dimensions shown hereon are based on field measurements of existing monuments and/or physical evidence found in the field unless otherwise indicated.
4. Physical features shown hereon are for graphical representation only.
5. See Form 2A for visible improvements within 500' of wellhead.
6. Distances to nearest section lines are measured perpendicularly.
7. This is not a land survey nor land survey plat.

PDOP Reading: 1.5 Instrument Operator: **Brent Garcia**

Date Surveyed: **03/20/2018**



## SURVEYOR'S STATEMENT

The undersigned hereby states that the well location shown hereon was staked on the ground based on existing monumentation and/or physical evidence found in the field and is correct to the best of my knowledge, information and belief.



VERDAD RESOURCES  
**TIMBRO 1717-12H**  
**JOB NO: 116051**

MML	03/30/2018	REVISION:	
SHEET :	1 OF 2	SW	08/13/2021
FILE:LO_TIMBRO_1717_12H_REV5		SW	09/02/2021

# COORDINATE TABLE



## ABBREVIATIONS LEGEND:

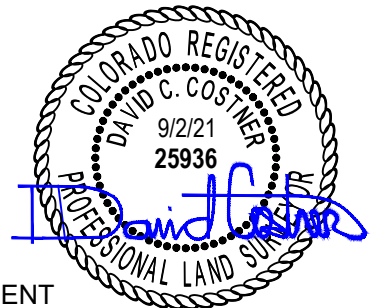
SURFACE HOLE LOCATION	(SHL)
LANDING POINT LOCATION	(LP)
TOP OF PRODUCTION ZONE	(TPZ)
BOTTOM OF PRODUCTION ZONE	(BPZ)
BOTTOM HOLE LOCATION	(BHL)
LATITUDE NAD 83	(LAT.83)
LONGITUDE NAD 83	(LONG.83)
LATITUDE NAD 27	(LAT.27)
LONGITUDE NAD 27	(LONG.27)
COLORADO COORDINATE SYSTEM OF 1983 NORTH ZONE	(SPC83)
COLORADO COORDINATE SYSTEM OF 1927 NORTH ZONE	(SPC27)

## Note:

1. All (SPC83) and (SPC27) coordinate values are U.S. Survey Feet.
2. All Latitude and Longitude values are decimal degrees.

## TIMBRO 1717-12H

	(LAT.83)	(LONG.83)	NORTHING EASTING		(LAT.27)	(LONG.27)	NORTHING EASTING	
			(SPC83)	(SPC83)			(SPC27)	(SPC27)
(SHL)	N40.7568756	W103.9958860	1522109.00	3416686.03	N40.7568881	W103.9953823	522106.87	2416836.62
(TPZ)	N40.7569582	W103.9982306	1522128.07	3416036.04	N40.7569706	W103.9977269	522125.92	2416186.62
(BPZ)	N40.7439769	W103.9981468	1517399.67	3416139.35	N40.7439893	W103.9976431	517397.56	2416289.97
(BHL)	N40.7437299	W103.9981452	1517309.69	3416141.31	N40.7437423	W103.9976415	517307.59	2416291.94



## SURVEYOR'S STATEMENT

The undersigned hereby states that the well location shown hereon was staked on the ground based on existing monumentation and/or physical evidence found in the field and is correct to the best of my knowledge, information and belief.



VERDAD RESOURCES  
TIMBRO 1717-12H  
JOB NO: 116051

MML	03/30/2018	REVISION:	
SHEET :	2 OF 2	SW	08/13/2021
FILE:LO_TIMBRO_1717_12H_REV5		SW	09/02/2021