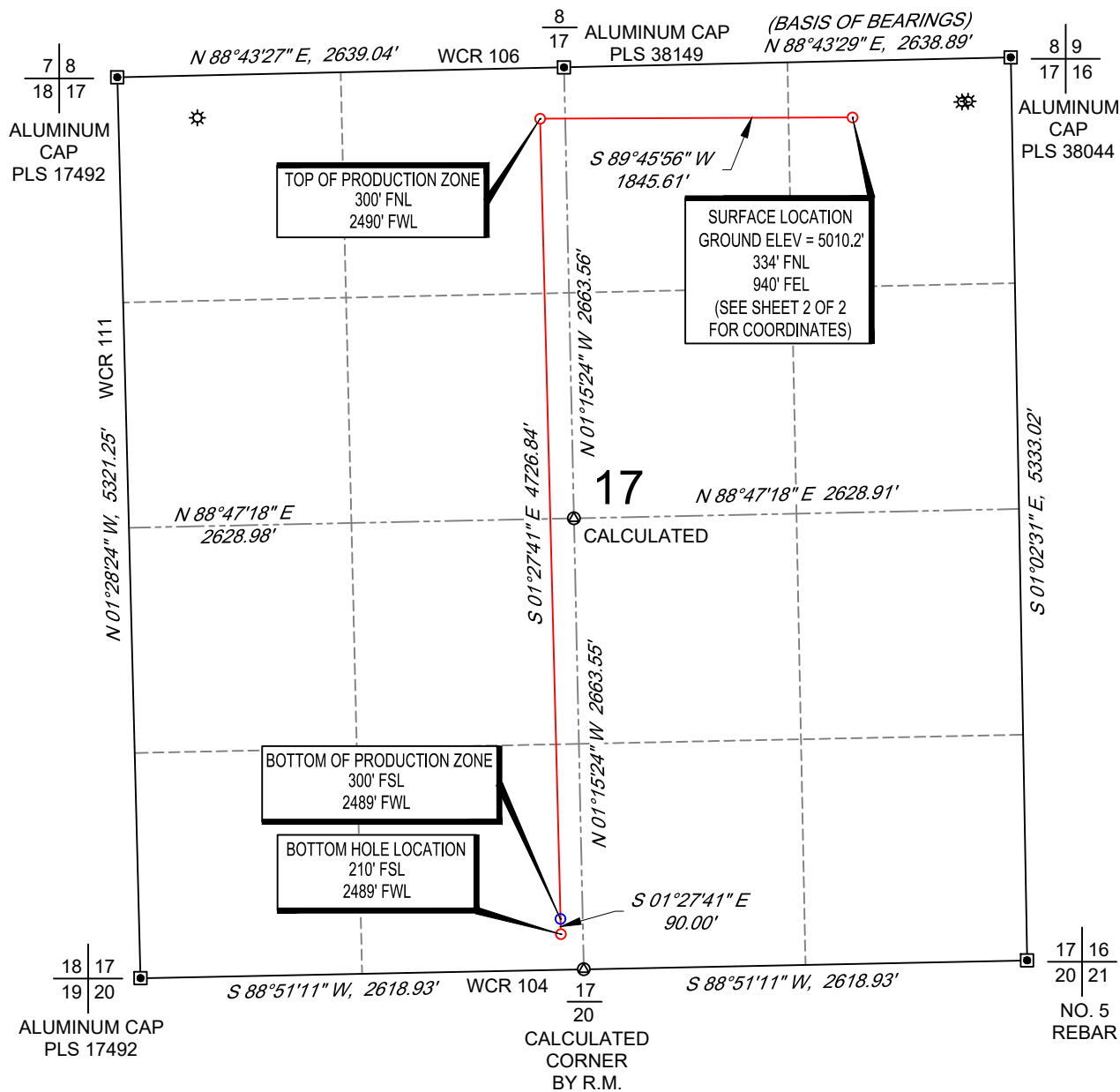


SCALE: 1" = 1000'
0' 500' 1000'

WELL LOCATION MAP

SHL NE/4 NE/4, SECTION 17, TOWNSHIP 9-N, RANGE 59-W
TPZ NE/4 NW/4, SECTION 17, TOWNSHIP 9-N, RANGE 59-W
BPZ/BHL SE/4 SW/4, SECTION 17, TOWNSHIP 9-N, RANGE 59-W
WELD COUNTY, COLORADO



NOTES

1. Horizontal (NAD 83) and vertical (NAVD 88) datum is based on the Trimble VRS Network. The lineal units of measurement are U.S. Survey Foot.
2. All directions, distances, and dimensions shown hereon are based on coordinates from the "Colorado coordinate system of 1983 north zone" (Title 38, Article 52 C.R.S.).
3. All section line dimensions shown hereon are based on field measurements of existing monuments and/or physical evidence found in the field unless otherwise indicated.
4. Physical features shown hereon are for graphical representation only.
5. See Form 2A for visible improvements within 500' of wellhead.
6. Distances to nearest section lines are measured perpendicularly.
7. This is not a land survey nor land survey plat.

PDOP Reading: 1.5 Instrument Operator: **Brent Garcia**

Date Surveyed: **03/20/2018**



SURVEYOR'S STATEMENT

The undersigned hereby states that the well location shown hereon was staked on the ground based on existing monumentation and/or physical evidence found in the field and is correct to the best of my knowledge, information and belief.



VERDAD RESOURCES
TIMBRO 1717-10H
JOB NO: 116051

MML	03/30/2018	REVISION:	
SHEET :	1 OF 2	SW	08/13/2021
FILE:LO_TIMBRO_1717_10H_REV5		SW	09/02/2021

COORDINATE TABLE



ABBREVIATIONS LEGEND:

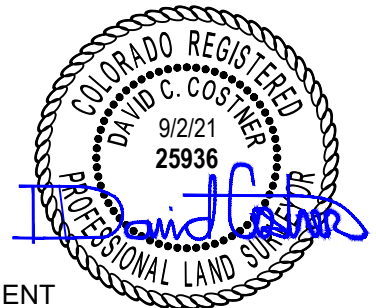
SURFACE HOLE LOCATION	(SHL)
LANDING POINT LOCATION	(LP)
TOP OF PRODUCTION ZONE	(TPZ)
BOTTOM OF PRODUCTION ZONE	(BPZ)
BOTTOM HOLE LOCATION	(BHL)
LATITUDE NAD 83	(LAT.83)
LONGITUDE NAD 83	(LONG.83)
LATITUDE NAD 27	(LAT.27)
LONGITUDE NAD 27	(LONG.27)
COLORADO COORDINATE SYSTEM OF 1983 NORTH ZONE	(SPC83)
COLORADO COORDINATE SYSTEM OF 1927 NORTH ZONE	(SPC27)

Note:

1. All (SPC83) and (SPC27) coordinate values are U.S. Survey Feet.
2. All Latitude and Longitude values are decimal degrees.

TIMBRO 1717-10H

	(LAT.83)	(LONG.83)	NORTHING EASTING		(LAT.27)	(LONG.27)	NORTHING EASTING	
			(SPC83)	(SPC83)			(SPC27)	(SPC27)
(SHL)	N40.7568751	W103.9960015	1522108.29	3416654.04	N40.7568876	W103.9954978	522106.15	2416804.62
(TPZ)	N40.7569401	W104.0026627	1522100.74	3414808.44	N40.7569526	W104.0021590	522098.59	2414958.98
(BPZ)	N40.7439666	W104.0025157	1517375.43	3414928.99	N40.7439790	W104.0020119	517373.33	2415079.58
(BHL)	N40.7437196	W104.0025129	1517285.46	3414931.28	N40.7437320	W104.0020091	517283.36	2415081.88



SURVEYOR'S STATEMENT

The undersigned hereby states that the well location shown hereon was staked on the ground based on existing monumentation and/or physical evidence found in the field and is correct to the best of my knowledge, information and belief.



VERDAD RESOURCES
TIMBRO 1717-10H
JOB NO: 116051

MML	03/30/2018	REVISION:	
SHEET :	2 OF 2	SW	08/13/2021
FILE:LO_TIMBRO_1717_10H_REV5		SW	09/02/2021