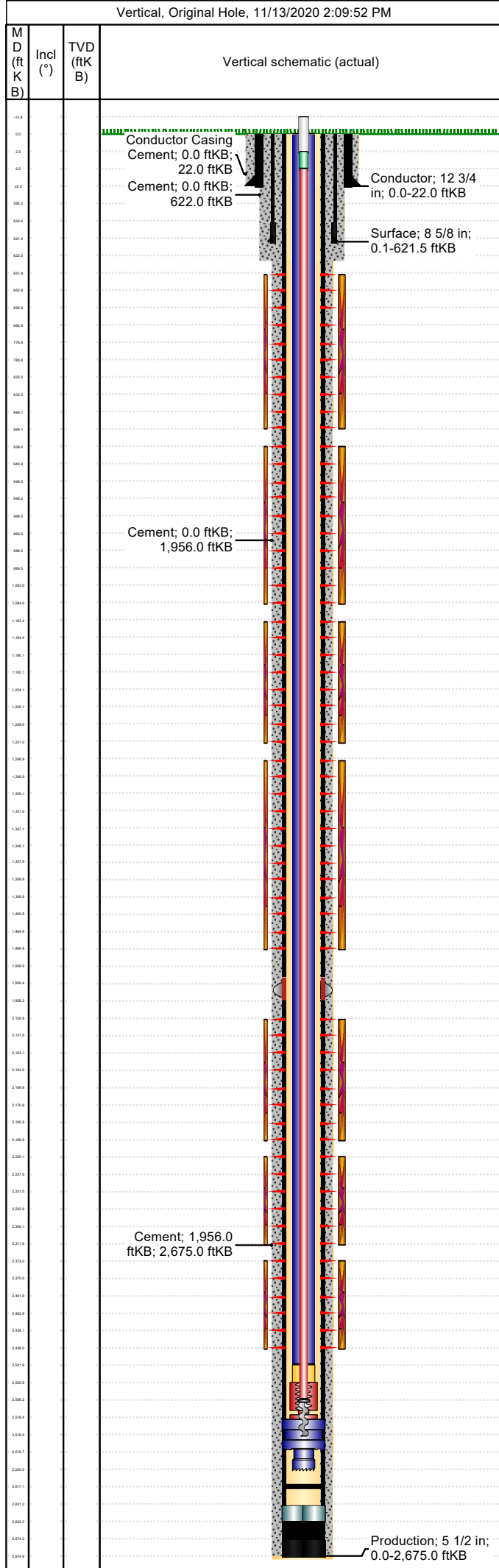


API/UWI 05071080800000	Location T35S-R67W-S05	Field Name Purgatoire River	Permit Number 2004106	State/Province Colorado	Well Configuration Type Vertical
Gr Elev (ft) 8,149.00	Casing Flange Elevation (ft)	KB-Ground Distance (ft) 0.00	KB-Casing Flange Distance (ft)	Spud Date 7/15/2004 00:00	Rig Release Date 7/17/2004 00:00

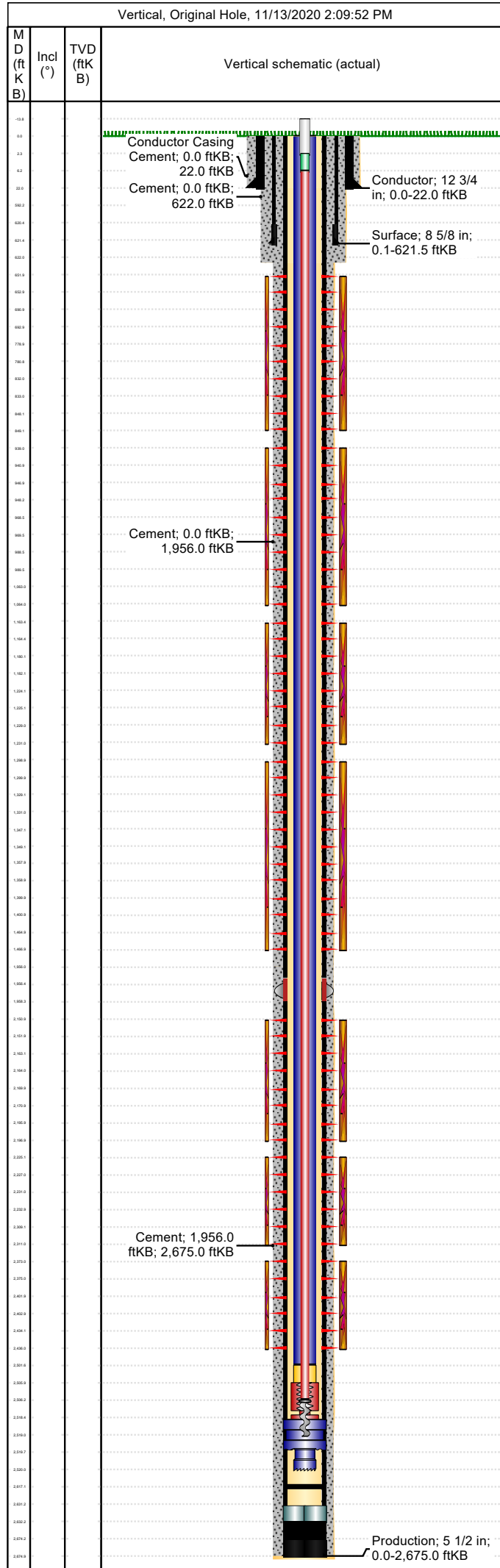


Wellbore										
Wellbore Name			Profile Type			Vertical Section Direction (°)				
Section Des		Size (in)		Act Top (ftKB)		Act Btm (ftKB)				
Kick Offs & Key Depths										
Type		Top Depth (ftKB)			Depth Top (TVD) (ftKB)					
Wellhead										
Type										
Des		Make		Model		SN		WP Top (psi)		
Last Mud Check										
Date	Type	Depth (ftKB)	Dens (lb/gal)	Vis (s/qt)	Gel 10s (lb/100ft²)	Gel 10m (lb/100ft²)	PV (cP)	YP (lb/100ft²)		
Casing										
Casing Description Conductor			Run Date 7/15/2004 00:00		Set Depth (ftKB) 22.0		Wellbore Original Hole			
Centralizers					Scratchers					
Jts	Item Des	OD (in)	ID (in)	Wt (lb/ft)	Grade	Len (ft)	Top (ftKB)	Btm (ftKB)		
	Casing Joints	12 3/4	11.10			22.00	0.0	22.0		
Casing Description Surface			Run Date 7/15/2004 00:00		Set Depth (ftKB) 621.5		Wellbore Original Hole			
Centralizers					Scratchers					
Jts	Item Des	OD (in)	ID (in)	Wt (lb/ft)	Grade	Len (ft)	Top (ftKB)	Btm (ftKB)		
19	Casing Joints	8 5/8	8.10	24.00	J-55	592.20	0.1	592.3		
1	Float Collar	8 5/8				0.00	592.3	592.3		
1	Casing Joints	8 5/8	8.10	24.00	J-55	28.25	592.3	620.5		
1	Guide Shoe	8 5/8				0.95	620.5	621.5		
Casing Description Production			Run Date 7/17/2004 00:00		Set Depth (ftKB) 2,675.0		Wellbore Original Hole			
Centralizers					Scratchers					
Jts	Item Des	OD (in)	ID (in)	Wt (lb/ft)	Grade	Len (ft)	Top (ftKB)	Btm (ftKB)		
43	Casing Joints	5 1/2	4.95	15.50	J-55	1,956.27	0.0	1,956.3		
1	DV Tool	5 1/2	4.95			2.12	1,956.3	1,958.4		
16	Casing Joints	5 1/2	4.95	15.50	J-55	672.93	1,958.4	2,631.3		
1	Float Collar	5 1/2	0.00			0.93	2,631.3	2,632.3		
1	Casing Joints	5 1/2	0.00	15.50	J-55	42.05	2,632.3	2,674.3		
1	Guide Shoe	5 1/2	0.00			0.70	2,674.3	2,675.0		
Cement: <Description?>										
Cementing Start Date			Cementing End Date			Wellbore				
Evaluation Method			Cement Evaluation Results							
Comment										
Cement Stage: <Description?>										
Top Depth (ftKB)		Bottom Depth (ftKB)		Full Return?		Vol Cement		Top Plug?		
Initial Pump Rate (bbl/min)		Final Pump Rate (bbl/min)		Avg Pump Rate (bbl/min)		Final Pump Pressure (psi)		Plug Bump Pressure (psi)		
Pipe Reciprocated?		Stroke (ft)		Reciprocation Rate (spm)		Pipe Rotated?		Pipe RPM (rpm)		
Tagged Depth (ftKB)		Tag Method		Depth Plug Drilled Out To (ft)		Drill Out Diameter (in)		Drill Out Date		
Cement Fluid: <Description?>										
Fluid Type		Fluid Description				Amount (sack)		Class		Volume Pumped (bbl)
Estimated Top (ftKB)		Est Btm (ftKB)		Yield (ft³/sack)		Mix H2O Ratio (gal/sack)		Free Water (%)		
Density (lb/gal)		Plastic Viscosity (cP)			Thickening Time (hr)		1st Compressive Strength (psi)			

Well Name: Hill Ranch 05-07

Conductor

API/UWI 05071080800000	Location T35S-R67W-S05	Field Name Purgatoire River	Permit Number 2004106	State/Province Colorado	Well Configuration Type Vertical
Gr Elev (ft) 8,149.00	Casing Flange Elevation (ft)	KB-Ground Distance (ft) 0.00	KB-Casing Flange Distance (ft)	Spud Date 7/15/2004 00:00	Rig Release Date 7/17/2004 00:00



Cement Fluid Additives

Add	Type	Conc
-----	------	------