

Inspection Photos
Location Name: BEVO /4-36M
Location #: 414138



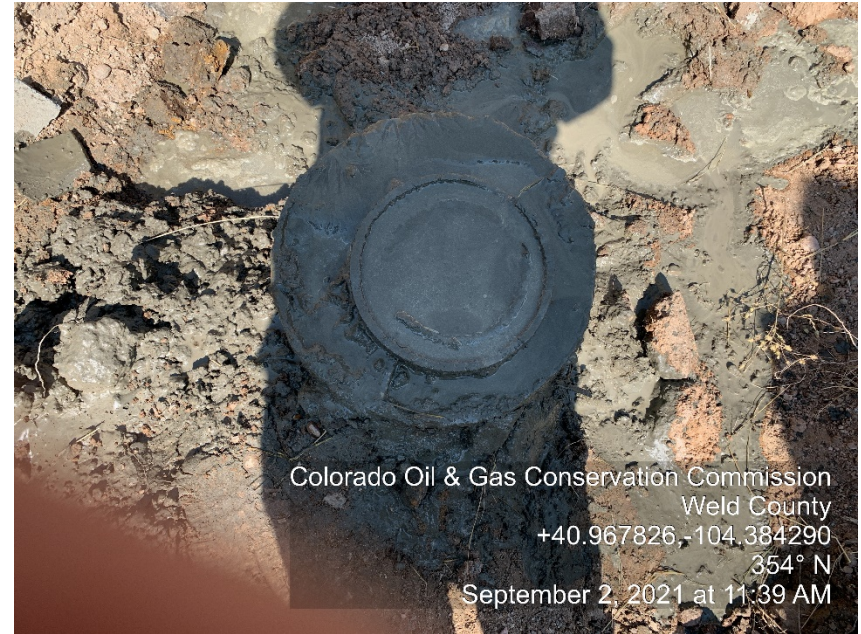
Colorado Oil & Gas Conservation Commission
Weld County
+40.967907, -104.384529
79° E
September 2, 2021 at 11:31 AM

Photo #1

Bevo 4-36 SWD (05-123-30585) Wellsite

Plugged & Abandoned | PA

Plugging Operations: Cementing | Final Plugging



Colorado Oil & Gas Conservation Commission
Weld County
+40.967826, -104.384290
354° N
September 2, 2021 at 11:39 AM

Photo #2

Bevo 4-36 SWD Wellsite

Plugged & Abandoned | PA

Plugging Operations: Cementing | Final Plugging

Cement to surface

Cut / NOT Capped

Inspection Photos
Location Name: BEVO /4-36M
Location #: 414138



Colorado Oil & Gas Conservation Commission
Weld County
+40.967826, -104.384290
0° N
September 2, 2021 at 11:40 AM

Photo #3

Bevo 4-36 SWD Wellsite

Plugged & Abandoned | PA

**Plugging Operations: Cementing | Final Plugging
Cement to surface**

Cut / Temporary Capped. Not welded



Colorado Oil & Gas Conservation Commission
Weld County
+40.968194, -104.384165
355° N
September 2, 2021 at 3:45 PM

Photo #4

Bevo 4-36 SWD Wellsite

Plugged & Abandoned | PA

**Plugging Operations: Cementing | Final Plugging
Cement to surface**

Wellsite sign