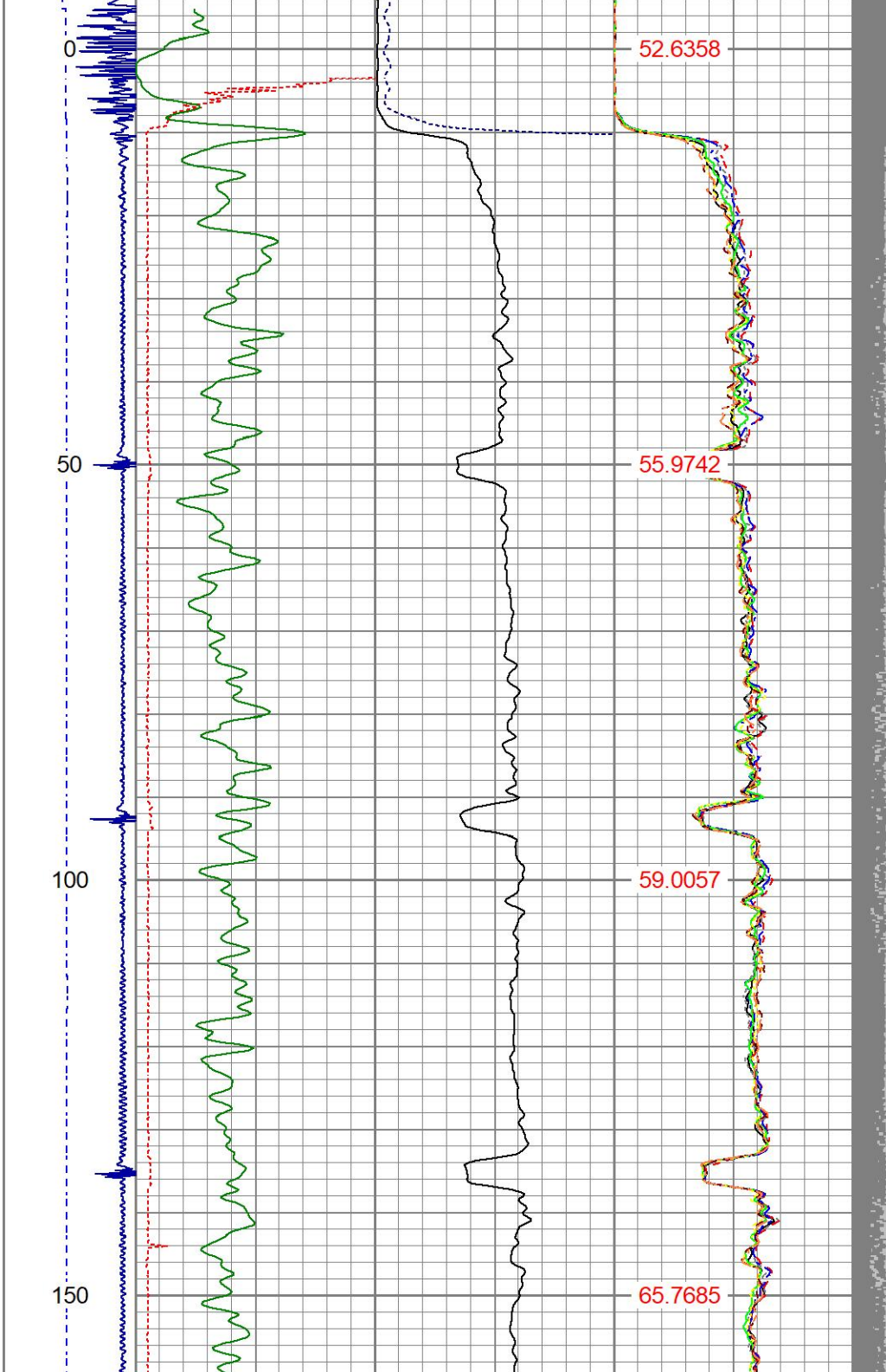
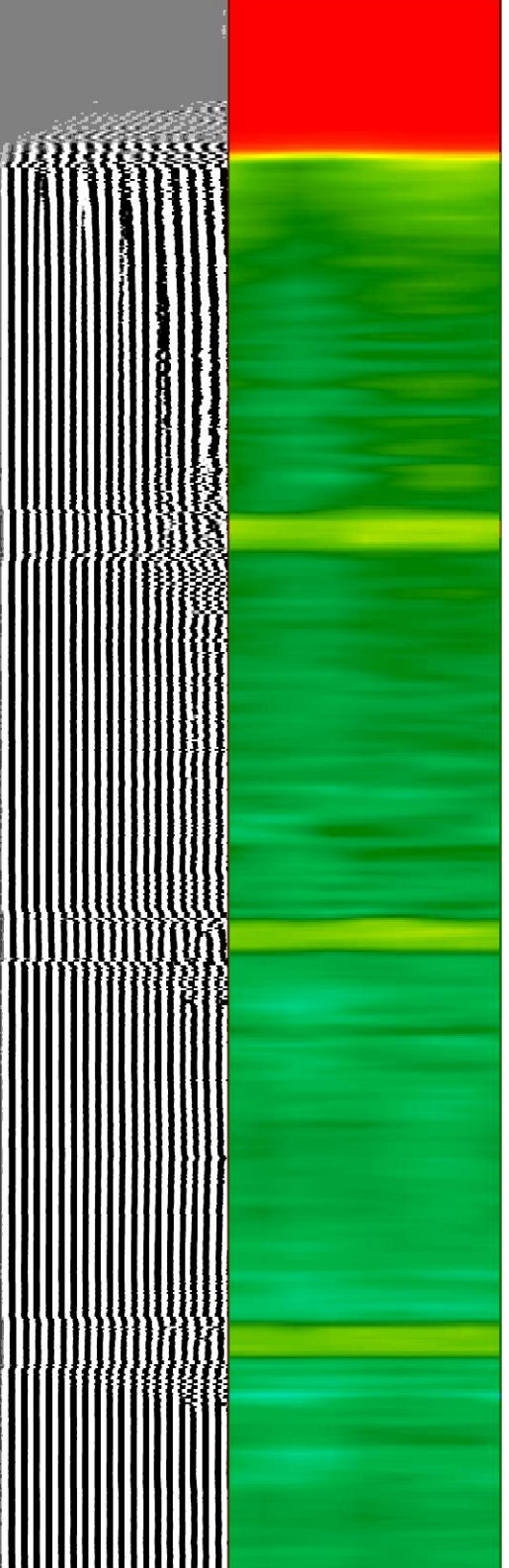
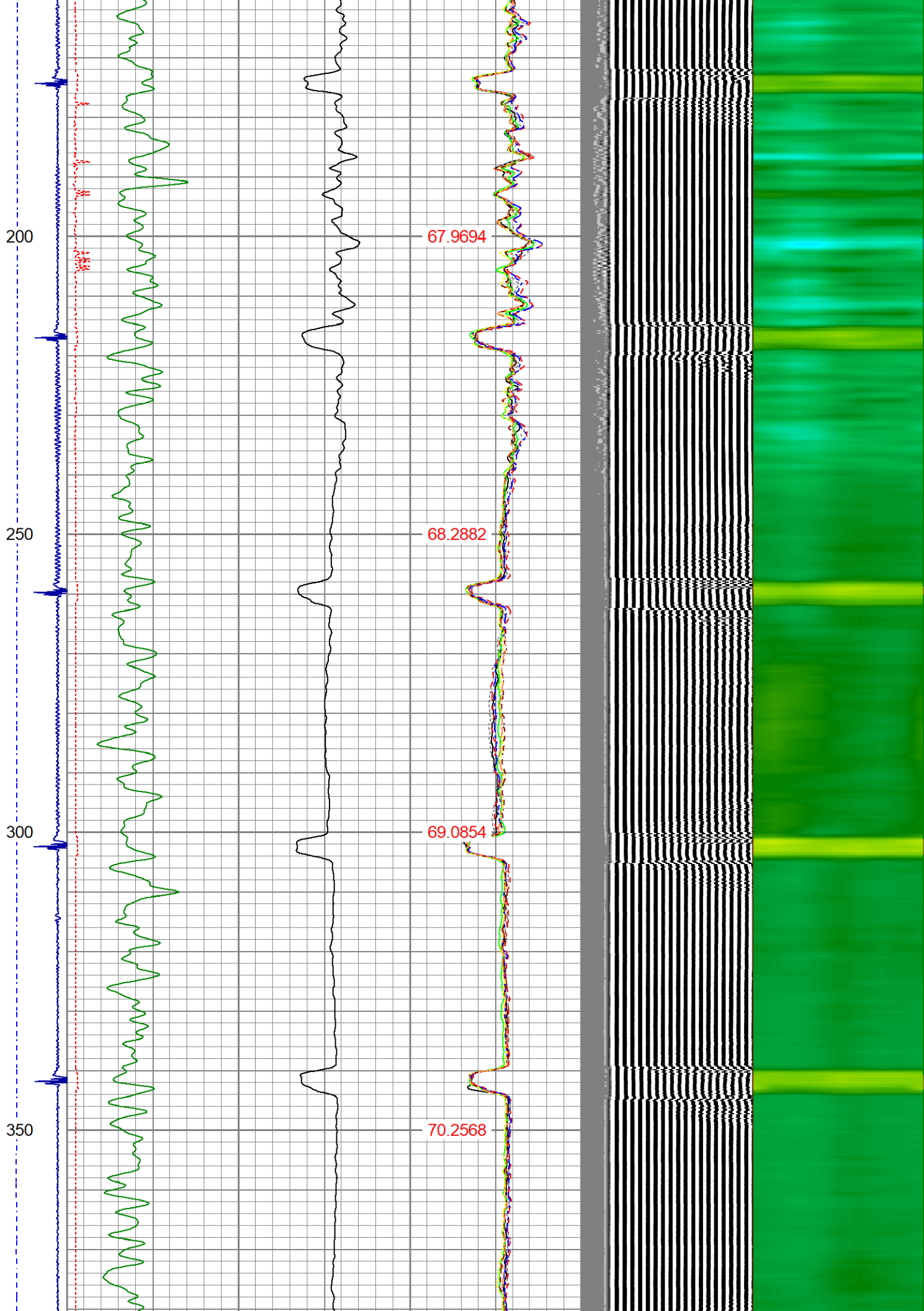


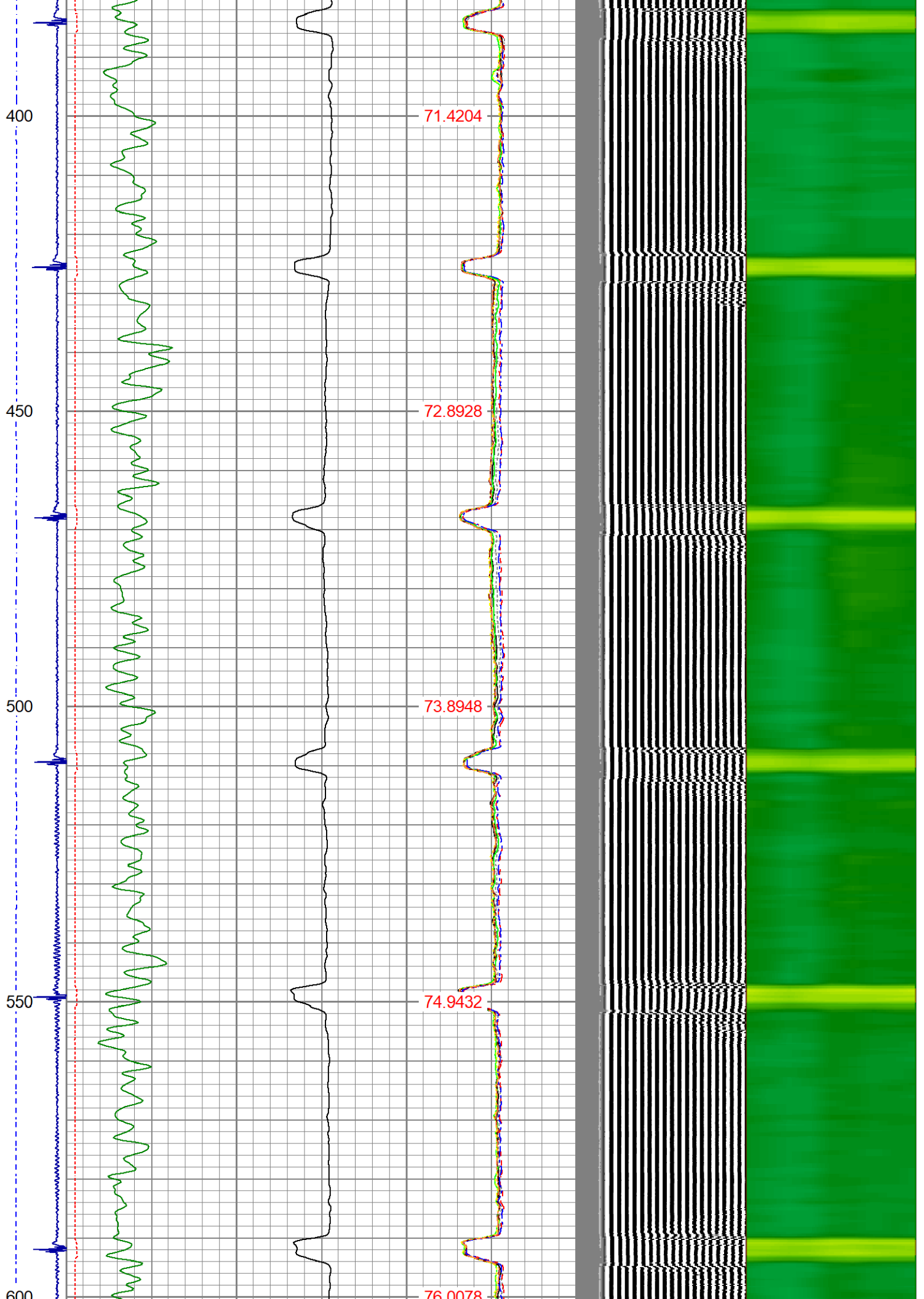
Dataset: five rivers k17-27.db: field/well/run1/pass3
 Total length: 20.93 ft
 Total weight: 85.00 lb
 O.D.: 2.75 in

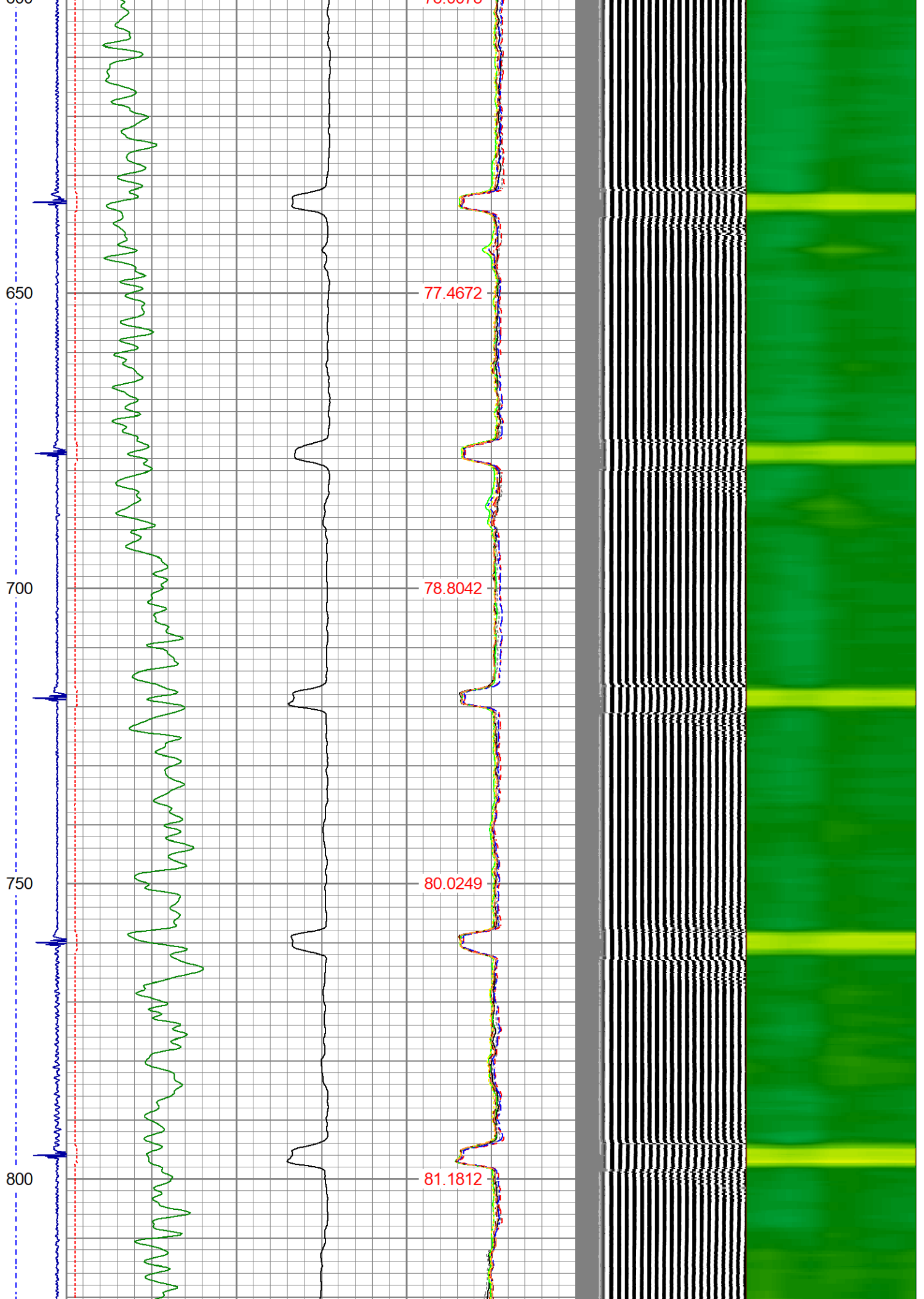
Database File: five rivers k17-27.db
 Dataset Pathname: pass3
 Presentation Format: ips_rbtcolor
 Dataset Creation: Tue May 11 11:57:25 2021
 Charted by: Depth in Foot scaled 1:240

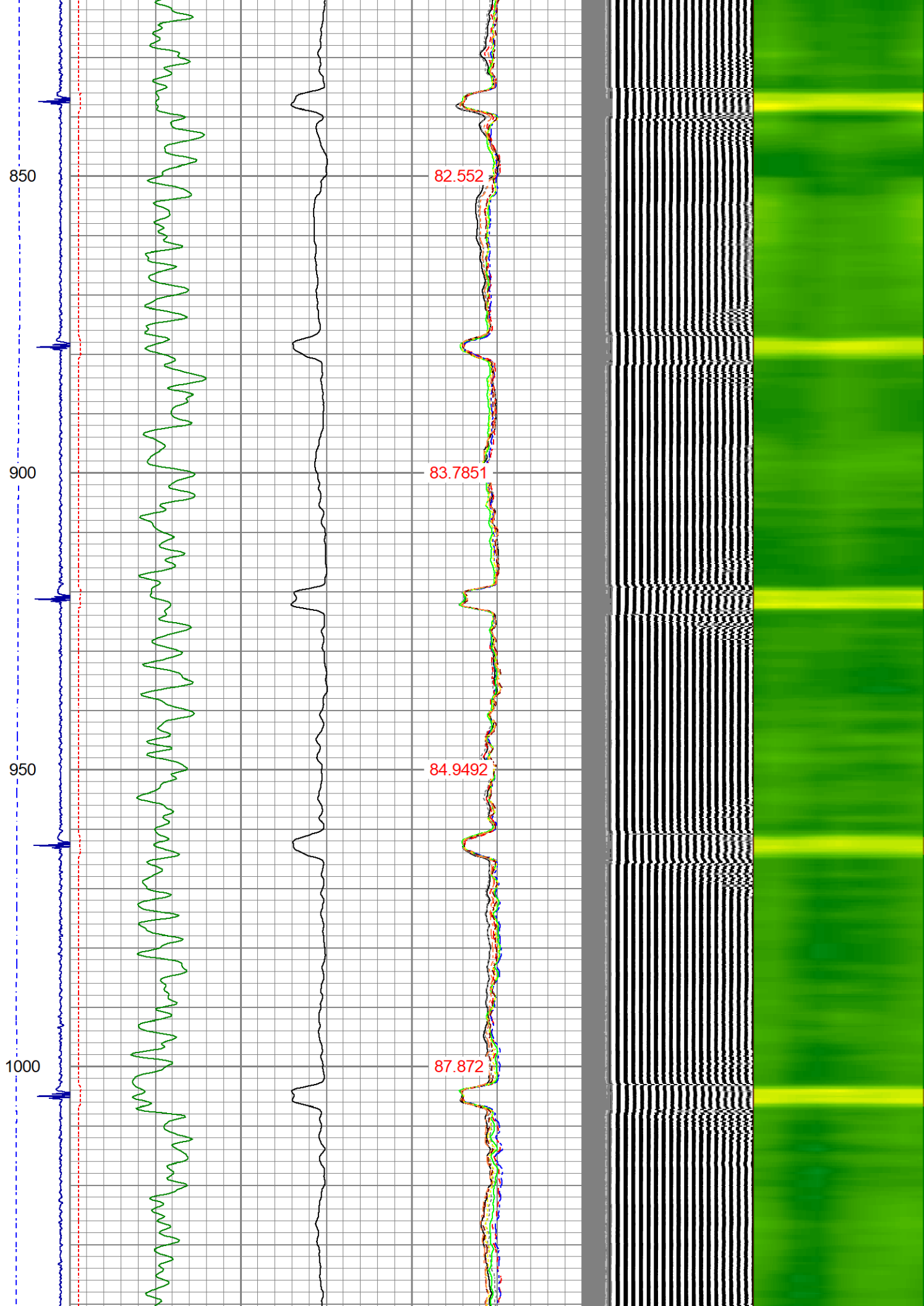
-9	CCL	1	200	TT (usec)	800	0	AMP (mV)	100	0	AMPS1	100	200	VDL (usec)	1200	1	Cement Map	8
LSPD	0	GR (GAPI)	200	0	AMPx5 (mV)	20	0	AMPS2	100								
(ft/min)	200	GR (GAPI)	400					0	AMPS3	100							
0	250							0	AMPS4	100							
								0	AMPS5	100							
								0	AMPS6	100							
								0	AMPS7	100							
								0	AMPS8	100							
								TEMP									
								(degF)									

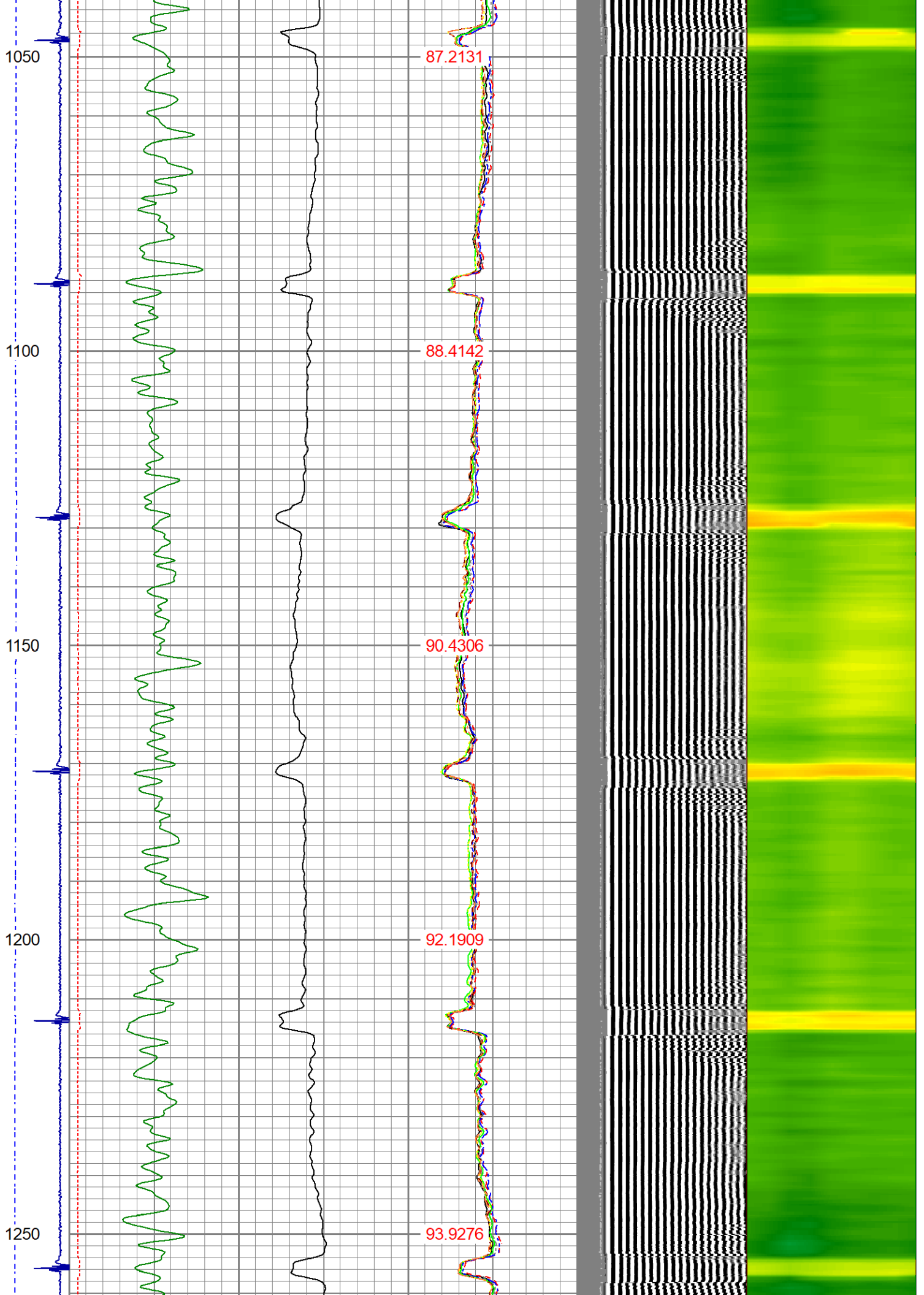


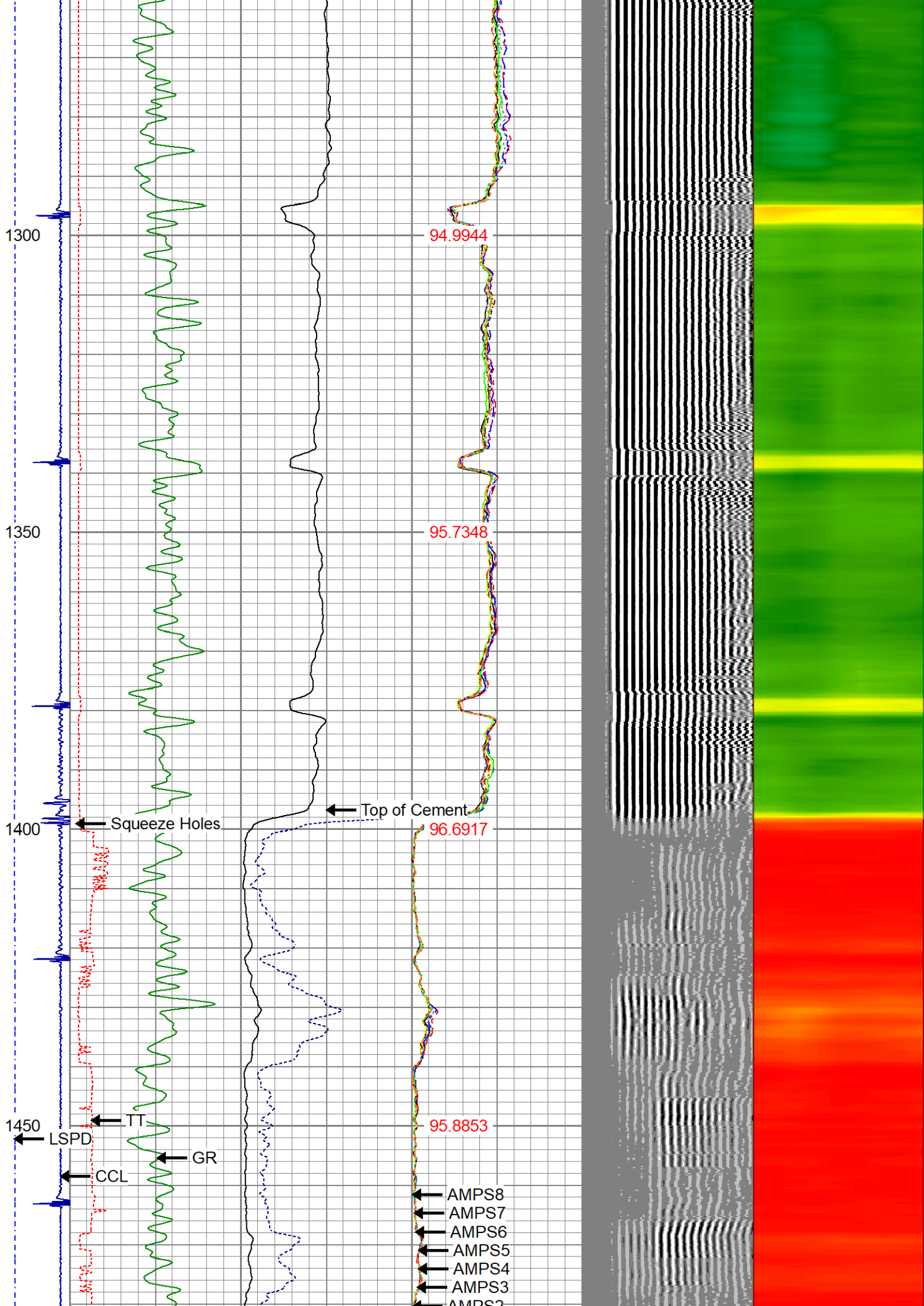


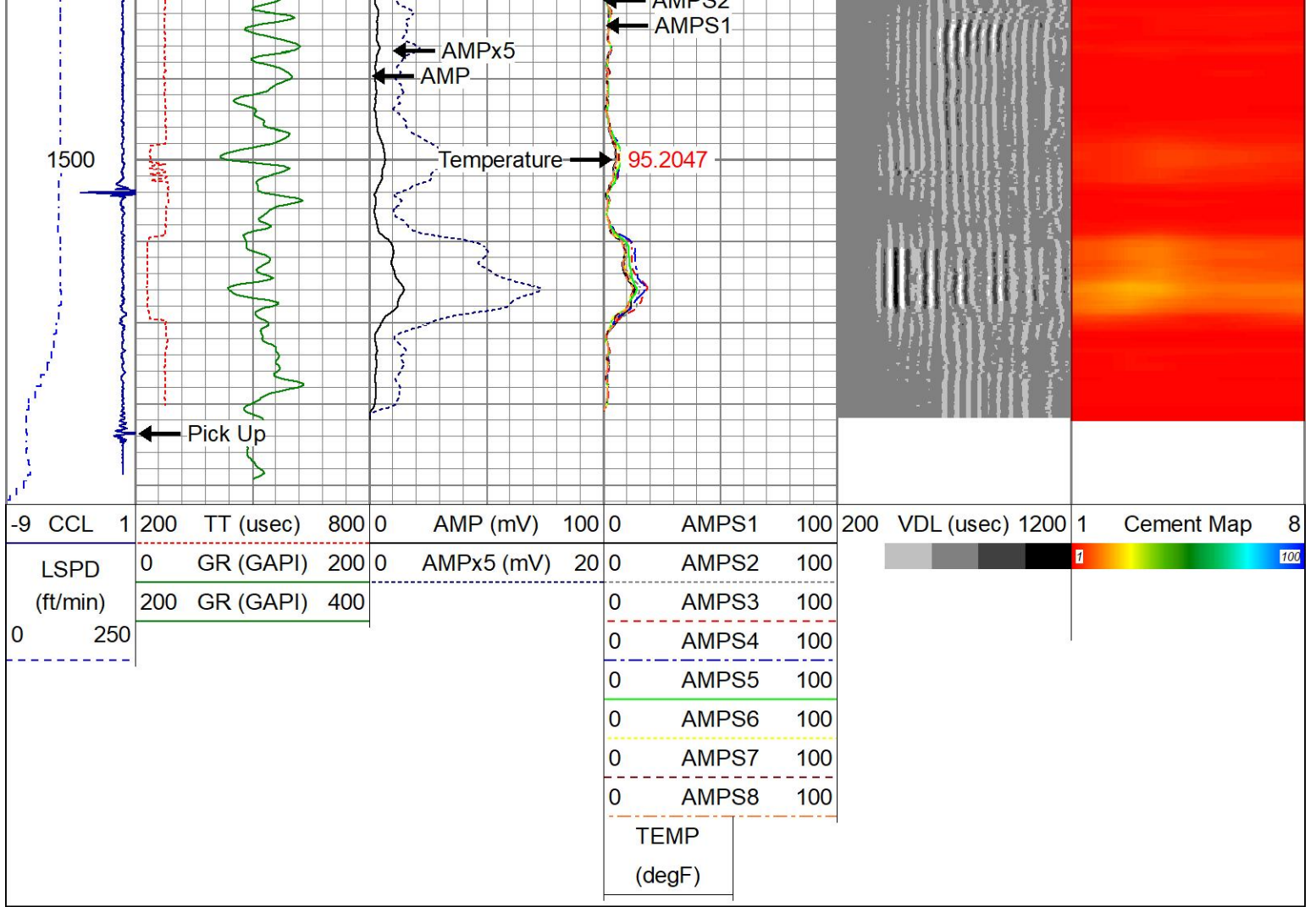












Calibration Report

Database File five rivers k17-27.db
 Dataset Pathname pass3
 Dataset Creation Tue May 11 11:57:25 2021

Gamma Ray Calibration Report

Serial Number: 27GRL10-XXXX
 Tool Model: 27GRL10
 Performed: (Not Performed)
 Calibrator Value: 1.0 GAPI
 Background Reading: 0.0 cps
 Calibrator Reading: 1.0 cps
 Sensitivity: 1.0000 GAPI/cps

Segmented Cement Bond Log Calibration Report

Serial Number: Greeley Ext Temp
 Tool Model: 27SBT10
 Calibration Casing Diameter: 4.500 in
 Calibration Depth: 1702.353 ft

Master Calibration, performed Mon May 3 15:58:42 2021:

Raw (v)		Calibrated (mv)		Results	
Zero	Cal	Zero	Cal	Gain	Offset

	Zero	Cal	Zero	Cal	Gain	Offset
3'	0.008	1.500	1.000	81.196	53.769	0.550
CAL	1.490	1.489				
5'	0.017	1.469	1.000	81.196	55.218	0.081
SUM						
S1	0.009	1.493	0.000	81.196	54.727	-0.497
S2	0.015	1.476	0.000	81.196	55.573	-0.815
S3	0.016	1.483	0.000	81.196	55.347	-0.905
S4	0.015	1.501	0.000	81.196	54.645	-0.833
S5	0.011	1.505	0.000	81.196	54.379	-0.625
S6	0.009	1.505	0.000	81.196	54.289	-0.494
S7	0.008	1.487	0.000	81.196	54.913	-0.442
S8	0.008	1.487	0.000	81.196	54.905	-0.457

Internal Reference Calibration, performed (Not Performed):

	Raw (v)		Calibrated (v)		Results	
	Zero	Cal	Zero	Cal	Gain	Offset
CAL	0.000	0.000	1.490	1.489	1.000	0.000

Air Zero Calibration, performed Tue May 11 11:31:20 2021:

	Raw (v)		Calibrated (v)		Results	
	Zero		Zero		Gain	Offset
3'	0.020		0.000			-0.012
5'	0.024		0.000			-0.007
SUM						
S1	0.020		0.000			-0.011
S2	0.020		0.000			-0.006
S3	0.021		0.000			-0.004
S4	0.019		0.000			-0.004
S5	0.019		0.000			-0.007
S6	0.019		0.000			-0.009
S7	0.017		0.000			-0.009
S8	0.021		0.000			-0.012



Well Services
E - L I N E

Company	NOBLE ENERGY		
Well	FIVE RIVERS K17-27		
Field	WATTENBERG		
County	WELD		
State	CO	Country	USA