



TEP Rocky Mountain LLC

Garfield Co., CO (NAD83)

WMC 24-17 Pad

WMC 32-20 - Slot WMC 32-20

OH

Plan: Plan #1

Standard Planning Report

07 October, 2020





Project: Garfield Co., CO (NAD83)
 Site: WMC 24-17 Pad
 Well: WMC 32-20
 Wellbore: OH
 Design: Plan #1
 Lat: 39.439065
 Long: -107.799474
 GL: 8868.00
 KB: KB=24' @ 8892.00usft



WELL DETAILS: WMC 32-20

+N/-S	+E/-W	Northing	Easting	Latitude	Longitude	WMC 32-20
0.00	0.00	1593027.80	2350631.70	39.439065	-107.799474	

WELLBORE TARGET DETAILS (LAT/LONG)

Name	TVD	+N/-S	+E/-W	Northing	Easting	Shape
WMC 32-20 KMW	8832.00	-1624.71	1422.68	1591367.60	2352012.80	Circle (Radius: 50.00)
WMC 32-20 PBHL	10982.00	-1624.71	1422.68	1591367.60	2352012.80	Point

SECTION DETAILS

MD	Inc	Azi	TVD	+N/-S	+E/-W	Dleg	TFace	VSect	Annotation
0.00	0.00	0.00	0.00	0.00	0.00	0.00	0.00	0.00	
420.00	0.00	0.00	420.00	0.00	0.00	0.00	0.00	0.00	Start Build 3.00
947.75	15.83	138.79	941.05	-54.51	47.73	3.00	138.79	72.45	Start 7118.90 hold at 947.75 MD
8066.64	15.83	138.79	7789.89	-1515.70	1327.22	0.00	0.00	2014.66	Start Drop -1.50
9122.13	0.00	0.00	8832.00	-1624.71	1422.68	1.50	180.00	2159.56	Start 2150.00 hold at 9122.13 MD
11272.13	0.00	0.00	10982.00	-1624.71	1422.68	0.00	0.00	2159.56	TD at 11272.13

CASING DETAILS

TVD	MD	Name	Size
1087.53	1100.00	9 5/8"	9-5/8

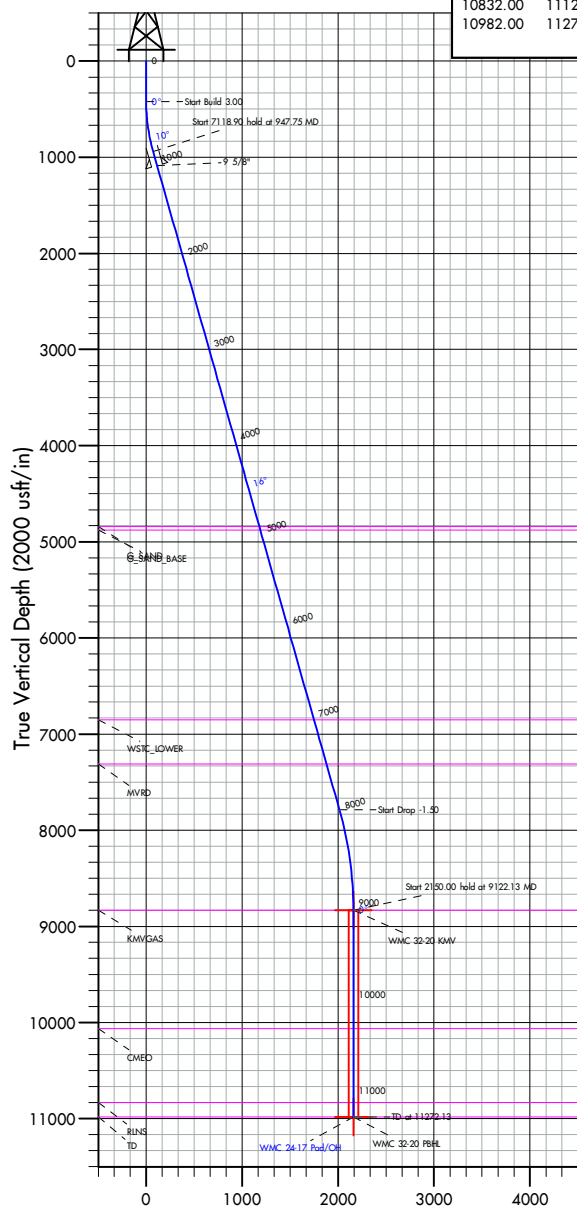
FORMATION TOP DETAILS

TVDPath	MDPath	Formation
4842.00	5002.51	G_SAND
4878.00	5039.93	G_SAND_BASE
6852.00	7091.77	WSTC_LOWER
7312.00	7569.91	MVRD
8832.00	9122.13	KMVGAS
10062.00	10352.13	CMEQ
10832.00	11122.13	RLNS
10982.00	11272.13	TD

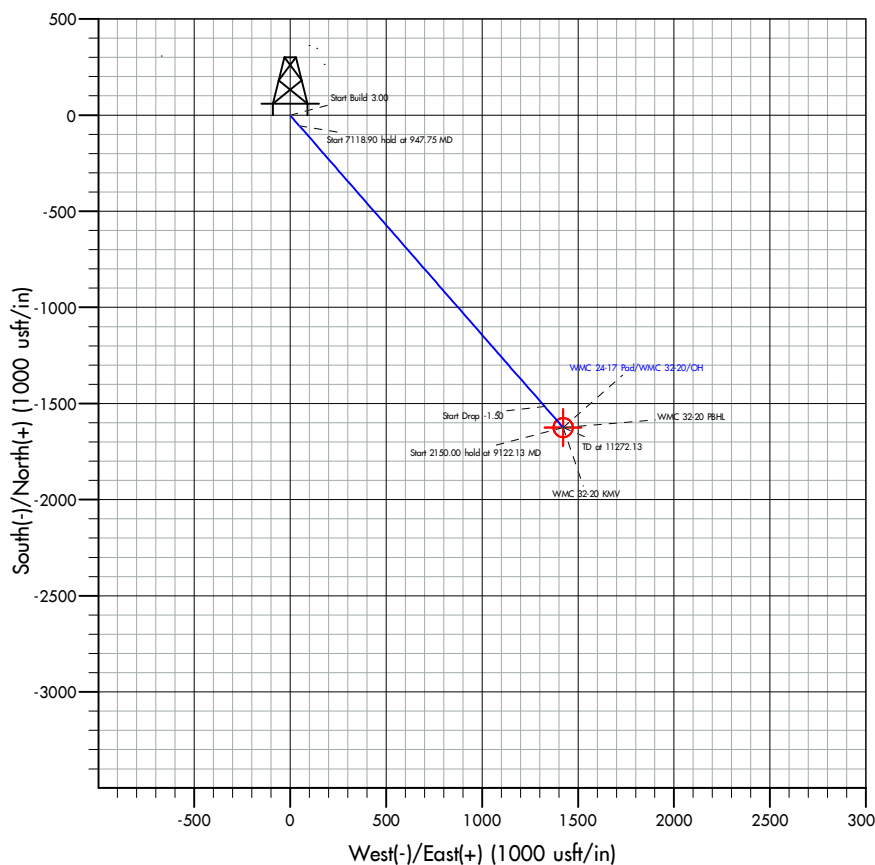


Azimuths to True North
 Magnetic North: 8.93°

Magnetic Field
 Strength: 51314.3nT
 Dip Angle: 65.48°
 Date: 9/2/2020
 Model: HDGM2020



Vertical Section at 138.79° (2000 usft/in)



Plan: Plan #1 (WMC 32-20/OH)

Created By: Dusty Mayer

Date: 12:36, October 07 2020

Database:	EDM 5000.1 Single User Db	Local Co-ordinate Reference:	Well WMC 32-20 - Slot WMC 32-20
Company:	TEP Rocky Mountain LLC	TVD Reference:	KB=24' @ 8892.00usft
Project:	Garfield Co., CO (NAD83)	MD Reference:	KB=24' @ 8892.00usft
Site:	WMC 24-17 Pad	North Reference:	True
Well:	WMC 32-20	Survey Calculation Method:	Minimum Curvature
Wellbore:	OH		
Design:	Plan #1		

Project	Garfield Co., CO (NAD83)		
Map System:	US State Plane 1983	System Datum:	Mean Sea Level
Geo Datum:	North American Datum 1983		
Map Zone:	Colorado Central Zone		

Site	WMC 24-17 Pad			
Site Position:		Northing:	1,593,032.70 usft	Latitude: 39.439076
From:	Map	Easting:	2,350,593.20 usft	Longitude: -107.799611
Position Uncertainty:	0.00 usft	Slot Radius:	13-3/16 "	

Well	WMC 32-20 - Slot WMC 32-20			
Well Position	+N/-S	0.00 usft	Northing:	1,593,027.80 usft
	+E/-W	0.00 usft	Easting:	2,350,631.70 usft
Position Uncertainty	0.00 usft	Wellhead Elevation:	usft	Ground Level: 8,868.00 usft
Grid Convergence:	-1.45 °			

Wellbore	OH				
Magnetics	Model Name	Sample Date	Declination (°)	Dip Angle (°)	Field Strength (nT)
	HDGM2020	9/2/2020	8.93	65.48	51,314.30000000

Design	Plan #1			
Audit Notes:				
Version:	Phase:	PLAN	Tie On Depth:	0.00
Vertical Section:	Depth From (TVD) (usft)	+N/-S (usft)	+E/-W (usft)	Direction (°)
	0.00	0.00	0.00	138.79

Plan Survey Tool Program	Date	10/7/2020		
Depth From (usft)	Depth To (usft)	Survey (Wellbore)	Tool Name	Remarks
1	0.00	11,272.13 Plan #1 (OH)	MWD+ HGDM	
			OWSG MWD + HGDM	

Plan Sections										
Measured Depth (usft)	Inclination (°)	Azimuth (°)	Vertical Depth (usft)	+N/-S (usft)	+E/-W (usft)	Dogleg Rate (°/100usft)	Build Rate (°/100usft)	Turn Rate (°/100usft)	TFO (°)	Target
0.00	0.00	0.00	0.00	0.00	0.00	0.00	0.00	0.00	0.00	
420.00	0.00	0.00	420.00	0.00	0.00	0.00	0.00	0.00	0.00	
947.75	15.83	138.79	941.05	-54.51	47.73	3.00	3.00	0.00	138.79	
8,066.64	15.83	138.79	7,789.89	-1,515.70	1,327.22	0.00	0.00	0.00	0.00	
9,122.13	0.00	0.00	8,832.00	-1,624.71	1,422.68	1.50	-1.50	0.00	180.00	WMC 32-20 KMV
11,272.13	0.00	0.00	10,982.00	-1,624.71	1,422.68	0.00	0.00	0.00	0.00	WMC 32-20 PBHL

Database:	EDM 5000.1 Single User Db	Local Co-ordinate Reference:	Well WMC 32-20 - Slot WMC 32-20
Company:	TEP Rocky Mountain LLC	TVD Reference:	KB=24' @ 8892.00usft
Project:	Garfield Co., CO (NAD83)	MD Reference:	KB=24' @ 8892.00usft
Site:	WMC 24-17 Pad	North Reference:	True
Well:	WMC 32-20	Survey Calculation Method:	Minimum Curvature
Wellbore:	OH		
Design:	Plan #1		

Planned Survey									
Measured Depth (usft)	Inclination (°)	Azimuth (°)	Vertical Depth (usft)	+N/-S (usft)	+E/-W (usft)	Vertical Section (usft)	Dogleg Rate (°/100usft)	Build Rate (°/100usft)	Turn Rate (°/100usft)
0.00	0.00	0.00	0.00	0.00	0.00	0.00	0.00	0.00	0.00
100.00	0.00	0.00	100.00	0.00	0.00	0.00	0.00	0.00	0.00
200.00	0.00	0.00	200.00	0.00	0.00	0.00	0.00	0.00	0.00
300.00	0.00	0.00	300.00	0.00	0.00	0.00	0.00	0.00	0.00
400.00	0.00	0.00	400.00	0.00	0.00	0.00	0.00	0.00	0.00
420.00	0.00	0.00	420.00	0.00	0.00	0.00	0.00	0.00	0.00
Start Build 3.00									
500.00	2.40	138.79	499.98	-1.26	1.10	1.68	3.00	3.00	0.00
600.00	5.40	138.79	599.73	-6.38	5.58	8.48	3.00	3.00	0.00
700.00	8.40	138.79	699.00	-15.41	13.50	20.49	3.00	3.00	0.00
800.00	11.40	138.79	797.50	-28.35	24.82	37.68	3.00	3.00	0.00
900.00	14.40	138.79	894.96	-45.14	39.53	60.00	3.00	3.00	0.00
947.75	15.83	138.79	941.05	-54.51	47.73	72.45	3.00	3.00	0.00
Start 7118.90 hold at 947.75 MD									
1,000.00	15.83	138.79	991.33	-65.23	57.12	86.71	0.00	0.00	0.00
1,100.00	15.83	138.79	1,087.53	-85.76	75.10	113.99	0.00	0.00	0.00
9 5/8"									
1,200.00	15.83	138.79	1,183.74	-106.28	93.07	141.27	0.00	0.00	0.00
1,300.00	15.83	138.79	1,279.95	-126.81	111.04	168.56	0.00	0.00	0.00
1,400.00	15.83	138.79	1,376.15	-147.34	129.01	195.84	0.00	0.00	0.00
1,500.00	15.83	138.79	1,472.36	-167.86	146.99	223.12	0.00	0.00	0.00
1,600.00	15.83	138.79	1,568.57	-188.39	164.96	250.40	0.00	0.00	0.00
1,700.00	15.83	138.79	1,664.77	-208.91	182.93	277.69	0.00	0.00	0.00
1,800.00	15.83	138.79	1,760.98	-229.44	200.91	304.97	0.00	0.00	0.00
1,900.00	15.83	138.79	1,857.18	-249.96	218.88	332.25	0.00	0.00	0.00
2,000.00	15.83	138.79	1,953.39	-270.49	236.85	359.53	0.00	0.00	0.00
2,100.00	15.83	138.79	2,049.60	-291.01	254.83	386.81	0.00	0.00	0.00
2,200.00	15.83	138.79	2,145.80	-311.54	272.80	414.10	0.00	0.00	0.00
2,300.00	15.83	138.79	2,242.01	-332.07	290.77	441.38	0.00	0.00	0.00
2,400.00	15.83	138.79	2,338.22	-352.59	308.75	468.66	0.00	0.00	0.00
2,500.00	15.83	138.79	2,434.42	-373.12	326.72	495.94	0.00	0.00	0.00
2,600.00	15.83	138.79	2,530.63	-393.64	344.69	523.23	0.00	0.00	0.00
2,700.00	15.83	138.79	2,626.84	-414.17	362.66	550.51	0.00	0.00	0.00
2,800.00	15.83	138.79	2,723.04	-434.69	380.64	577.79	0.00	0.00	0.00
2,900.00	15.83	138.79	2,819.25	-455.22	398.61	605.07	0.00	0.00	0.00
3,000.00	15.83	138.79	2,915.46	-475.74	416.58	632.36	0.00	0.00	0.00
3,100.00	15.83	138.79	3,011.66	-496.27	434.56	659.64	0.00	0.00	0.00
3,200.00	15.83	138.79	3,107.87	-516.79	452.53	686.92	0.00	0.00	0.00
3,300.00	15.83	138.79	3,204.07	-537.32	470.50	714.20	0.00	0.00	0.00
3,400.00	15.83	138.79	3,300.28	-557.85	488.48	741.49	0.00	0.00	0.00
3,500.00	15.83	138.79	3,396.49	-578.37	506.45	768.77	0.00	0.00	0.00
3,600.00	15.83	138.79	3,492.69	-598.90	524.42	796.05	0.00	0.00	0.00
3,700.00	15.83	138.79	3,588.90	-619.42	542.40	823.33	0.00	0.00	0.00
3,800.00	15.83	138.79	3,685.11	-639.95	560.37	850.61	0.00	0.00	0.00
3,900.00	15.83	138.79	3,781.31	-660.47	578.34	877.90	0.00	0.00	0.00
4,000.00	15.83	138.79	3,877.52	-681.00	596.31	905.18	0.00	0.00	0.00
4,100.00	15.83	138.79	3,973.73	-701.52	614.29	932.46	0.00	0.00	0.00
4,200.00	15.83	138.79	4,069.93	-722.05	632.26	959.74	0.00	0.00	0.00
4,300.00	15.83	138.79	4,166.14	-742.58	650.23	987.03	0.00	0.00	0.00
4,400.00	15.83	138.79	4,262.35	-763.10	668.21	1,014.31	0.00	0.00	0.00
4,500.00	15.83	138.79	4,358.55	-783.63	686.18	1,041.59	0.00	0.00	0.00
4,600.00	15.83	138.79	4,454.76	-804.15	704.15	1,068.87	0.00	0.00	0.00
4,700.00	15.83	138.79	4,550.96	-824.68	722.13	1,096.16	0.00	0.00	0.00

Database:	EDM 5000.1 Single User Db	Local Co-ordinate Reference:	Well WMC 32-20 - Slot WMC 32-20
Company:	TEP Rocky Mountain LLC	TVD Reference:	KB=24' @ 8892.00usft
Project:	Garfield Co., CO (NAD83)	MD Reference:	KB=24' @ 8892.00usft
Site:	WMC 24-17 Pad	North Reference:	True
Well:	WMC 32-20	Survey Calculation Method:	Minimum Curvature
Wellbore:	OH		
Design:	Plan #1		

Planned Survey									
Measured Depth (usft)	Inclination (°)	Azimuth (°)	Vertical Depth (usft)	+N/-S (usft)	+E/-W (usft)	Vertical Section (usft)	Dogleg Rate (°/100usft)	Build Rate (°/100usft)	Turn Rate (°/100usft)
4,800.00	15.83	138.79	4,647.17	-845.20	740.10	1,123.44	0.00	0.00	0.00
4,900.00	15.83	138.79	4,743.38	-865.73	758.07	1,150.72	0.00	0.00	0.00
5,000.00	15.83	138.79	4,839.58	-886.25	776.05	1,178.00	0.00	0.00	0.00
5,002.51	15.83	138.79	4,842.00	-886.77	776.50	1,178.69	0.00	0.00	0.00
G_SAND									
5,039.93	15.83	138.79	4,878.00	-894.45	783.22	1,188.90	0.00	0.00	0.00
G_SAND_BASE									
5,100.00	15.83	138.79	4,935.79	-906.78	794.02	1,205.29	0.00	0.00	0.00
5,200.00	15.83	138.79	5,032.00	-927.30	811.99	1,232.57	0.00	0.00	0.00
5,300.00	15.83	138.79	5,128.20	-947.83	829.96	1,259.85	0.00	0.00	0.00
5,400.00	15.83	138.79	5,224.41	-968.36	847.94	1,287.13	0.00	0.00	0.00
5,500.00	15.83	138.79	5,320.62	-988.88	865.91	1,314.41	0.00	0.00	0.00
5,600.00	15.83	138.79	5,416.82	-1,009.41	883.88	1,341.70	0.00	0.00	0.00
5,700.00	15.83	138.79	5,513.03	-1,029.93	901.86	1,368.98	0.00	0.00	0.00
5,800.00	15.83	138.79	5,609.23	-1,050.46	919.83	1,396.26	0.00	0.00	0.00
5,900.00	15.83	138.79	5,705.44	-1,070.98	937.80	1,423.54	0.00	0.00	0.00
6,000.00	15.83	138.79	5,801.65	-1,091.51	955.78	1,450.83	0.00	0.00	0.00
6,100.00	15.83	138.79	5,897.85	-1,112.03	973.75	1,478.11	0.00	0.00	0.00
6,200.00	15.83	138.79	5,994.06	-1,132.56	991.72	1,505.39	0.00	0.00	0.00
6,300.00	15.83	138.79	6,090.27	-1,153.08	1,009.70	1,532.67	0.00	0.00	0.00
6,400.00	15.83	138.79	6,186.47	-1,173.61	1,027.67	1,559.96	0.00	0.00	0.00
6,500.00	15.83	138.79	6,282.68	-1,194.14	1,045.64	1,587.24	0.00	0.00	0.00
6,600.00	15.83	138.79	6,378.89	-1,214.66	1,063.61	1,614.52	0.00	0.00	0.00
6,700.00	15.83	138.79	6,475.09	-1,235.19	1,081.59	1,641.80	0.00	0.00	0.00
6,800.00	15.83	138.79	6,571.30	-1,255.71	1,099.56	1,669.09	0.00	0.00	0.00
6,900.00	15.83	138.79	6,667.51	-1,276.24	1,117.53	1,696.37	0.00	0.00	0.00
7,000.00	15.83	138.79	6,763.71	-1,296.76	1,135.51	1,723.65	0.00	0.00	0.00
7,091.77	15.83	138.79	6,852.00	-1,315.60	1,152.00	1,748.69	0.00	0.00	0.00
WSTC_LOWER									
7,100.00	15.83	138.79	6,859.92	-1,317.29	1,153.48	1,750.93	0.00	0.00	0.00
7,200.00	15.83	138.79	6,956.12	-1,337.81	1,171.45	1,778.22	0.00	0.00	0.00
7,300.00	15.83	138.79	7,052.33	-1,358.34	1,189.43	1,805.50	0.00	0.00	0.00
7,400.00	15.83	138.79	7,148.54	-1,378.87	1,207.40	1,832.78	0.00	0.00	0.00
7,500.00	15.83	138.79	7,244.74	-1,399.39	1,225.37	1,860.06	0.00	0.00	0.00
7,569.91	15.83	138.79	7,312.00	-1,413.74	1,237.94	1,879.13	0.00	0.00	0.00
MVRD									
7,600.00	15.83	138.79	7,340.95	-1,419.92	1,243.35	1,887.34	0.00	0.00	0.00
7,700.00	15.83	138.79	7,437.16	-1,440.44	1,261.32	1,914.63	0.00	0.00	0.00
7,800.00	15.83	138.79	7,533.36	-1,460.97	1,279.29	1,941.91	0.00	0.00	0.00
7,900.00	15.83	138.79	7,629.57	-1,481.49	1,297.26	1,969.19	0.00	0.00	0.00
8,000.00	15.83	138.79	7,725.78	-1,502.02	1,315.24	1,996.47	0.00	0.00	0.00
8,066.64	15.83	138.79	7,789.89	-1,515.70	1,327.22	2,014.66	0.00	0.00	0.00
Start Drop -1.50									
8,100.00	15.33	138.79	7,822.02	-1,522.44	1,333.12	2,023.62	1.50	-1.50	0.00
8,200.00	13.83	138.79	7,918.80	-1,541.38	1,349.70	2,048.79	1.50	-1.50	0.00
8,300.00	12.33	138.79	8,016.20	-1,558.41	1,364.61	2,071.43	1.50	-1.50	0.00
8,400.00	10.83	138.79	8,114.16	-1,573.51	1,377.84	2,091.50	1.50	-1.50	0.00
8,500.00	9.33	138.79	8,212.61	-1,586.68	1,389.37	2,109.01	1.50	-1.50	0.00
8,600.00	7.83	138.79	8,311.49	-1,597.91	1,399.20	2,123.93	1.50	-1.50	0.00
8,700.00	6.33	138.79	8,410.73	-1,607.18	1,407.32	2,136.26	1.50	-1.50	0.00
8,800.00	4.83	138.79	8,510.25	-1,614.50	1,413.73	2,145.99	1.50	-1.50	0.00
8,900.00	3.33	138.79	8,609.99	-1,619.86	1,418.42	2,153.10	1.50	-1.50	0.00
9,000.00	1.83	138.79	8,709.89	-1,623.25	1,421.39	2,157.61	1.50	-1.50	0.00
9,100.00	0.33	138.79	8,809.87	-1,624.67	1,422.63	2,159.50	1.50	-1.50	0.00

Database:	EDM 5000.1 Single User Db	Local Co-ordinate Reference:	Well WMC 32-20 - Slot WMC 32-20
Company:	TEP Rocky Mountain LLC	TVD Reference:	KB=24' @ 8892.00usft
Project:	Garfield Co., CO (NAD83)	MD Reference:	KB=24' @ 8892.00usft
Site:	WMC 24-17 Pad	North Reference:	True
Well:	WMC 32-20	Survey Calculation Method:	Minimum Curvature
Wellbore:	OH		
Design:	Plan #1		

Planned Survey									
Measured Depth (usft)	Inclination (°)	Azimuth (°)	Vertical Depth (usft)	+N/-S (usft)	+E/-W (usft)	Vertical Section (usft)	Dogleg Rate (°/100usft)	Build Rate (°/100usft)	Turn Rate (°/100usft)
9,122.13	0.00	0.00	8,832.00	-1,624.71	1,422.68	2,159.56	1.50	-1.50	0.00
Start 2150.00 hold at 9122.13 MD - KMGAS									
9,200.00	0.00	0.00	8,909.87	-1,624.71	1,422.68	2,159.56	0.00	0.00	0.00
9,300.00	0.00	0.00	9,009.87	-1,624.71	1,422.68	2,159.56	0.00	0.00	0.00
9,400.00	0.00	0.00	9,109.87	-1,624.71	1,422.68	2,159.56	0.00	0.00	0.00
9,500.00	0.00	0.00	9,209.87	-1,624.71	1,422.68	2,159.56	0.00	0.00	0.00
9,600.00	0.00	0.00	9,309.87	-1,624.71	1,422.68	2,159.56	0.00	0.00	0.00
9,700.00	0.00	0.00	9,409.87	-1,624.71	1,422.68	2,159.56	0.00	0.00	0.00
9,800.00	0.00	0.00	9,509.87	-1,624.71	1,422.68	2,159.56	0.00	0.00	0.00
9,900.00	0.00	0.00	9,609.87	-1,624.71	1,422.68	2,159.56	0.00	0.00	0.00
10,000.00	0.00	0.00	9,709.87	-1,624.71	1,422.68	2,159.56	0.00	0.00	0.00
10,100.00	0.00	0.00	9,809.87	-1,624.71	1,422.68	2,159.56	0.00	0.00	0.00
10,200.00	0.00	0.00	9,909.87	-1,624.71	1,422.68	2,159.56	0.00	0.00	0.00
10,300.00	0.00	0.00	10,009.87	-1,624.71	1,422.68	2,159.56	0.00	0.00	0.00
10,352.13	0.00	0.00	10,062.00	-1,624.71	1,422.68	2,159.56	0.00	0.00	0.00
CME0									
10,400.00	0.00	0.00	10,109.87	-1,624.71	1,422.68	2,159.56	0.00	0.00	0.00
10,500.00	0.00	0.00	10,209.87	-1,624.71	1,422.68	2,159.56	0.00	0.00	0.00
10,600.00	0.00	0.00	10,309.87	-1,624.71	1,422.68	2,159.56	0.00	0.00	0.00
10,700.00	0.00	0.00	10,409.87	-1,624.71	1,422.68	2,159.56	0.00	0.00	0.00
10,800.00	0.00	0.00	10,509.87	-1,624.71	1,422.68	2,159.56	0.00	0.00	0.00
10,900.00	0.00	0.00	10,609.87	-1,624.71	1,422.68	2,159.56	0.00	0.00	0.00
11,000.00	0.00	0.00	10,709.87	-1,624.71	1,422.68	2,159.56	0.00	0.00	0.00
11,100.00	0.00	0.00	10,809.87	-1,624.71	1,422.68	2,159.56	0.00	0.00	0.00
11,122.13	0.00	0.00	10,832.00	-1,624.71	1,422.68	2,159.56	0.00	0.00	0.00
RLNS									
11,200.00	0.00	0.00	10,909.87	-1,624.71	1,422.68	2,159.56	0.00	0.00	0.00
11,272.13	0.00	0.00	10,982.00	-1,624.71	1,422.68	2,159.56	0.00	0.00	0.00
TD at 11272.13 - TD									

Design Targets									
Target Name	Dip Angle (°)	Dip Dir. (°)	TVD (usft)	+N/-S (usft)	+E/-W (usft)	Northing (usft)	Easting (usft)	Latitude	Longitude
- hit/miss target									
- Shape									
WMC 32-20 KMV	0.00	0.00	8,832.00	-1,624.71	1,422.68	1,591,367.60	2,352,012.80	39.434604	-107.794438
- plan hits target center									
- Circle (radius 50.00)									
WMC 32-20 PBHL	0.00	0.00	10,982.00	-1,624.71	1,422.68	1,591,367.60	2,352,012.80	39.434604	-107.794438
- plan hits target center									
- Point									

Casing Points					
Measured Depth (usft)	Vertical Depth (usft)	Name		Casing Diameter (")	Hole Diameter (")
1,100.00	1,087.53	9 5/8"		9-5/8	13-1/2

Database:	EDM 5000.1 Single User Db	Local Co-ordinate Reference:	Well WMC 32-20 - Slot WMC 32-20
Company:	TEP Rocky Mountain LLC	TVD Reference:	KB=24' @ 8892.00usft
Project:	Garfield Co., CO (NAD83)	MD Reference:	KB=24' @ 8892.00usft
Site:	WMC 24-17 Pad	North Reference:	True
Well:	WMC 32-20	Survey Calculation Method:	Minimum Curvature
Wellbore:	OH		
Design:	Plan #1		

Formations						
Measured Depth (usft)	Vertical Depth (usft)	Name	Lithology	Dip (°)	Dip Direction (°)	
5,002.51	4,842.00	G_SAND				
5,039.93	4,878.00	G_SAND_BASE				
7,091.77	6,852.00	WSTC_LOWER				
7,569.91	7,312.00	MVRD				
9,122.13	8,832.00	KMVGAS				
10,352.13	10,062.00	CME0				
11,122.13	10,832.00	RLNS				
11,272.13	10,982.00	TD				

Plan Annotations					
Measured Depth (usft)	Vertical Depth (usft)	Local Coordinates			
		+N/-S (usft)	+E/-W (usft)	Comment	
420.00	420.00	0.00	0.00	Start Build 3.00	
947.75	941.05	-54.51	47.73	Start 7118.90 hold at 947.75 MD	
8,066.64	7,789.89	-1,515.70	1,327.22	Start Drop -1.50	
9,122.13	8,832.00	-1,624.71	1,422.68	Start 2150.00 hold at 9122.13 MD	
11,272.13	10,982.00	-1,624.71	1,422.68	TD at 11272.13	