



August 25, 2021

Taproot Energy Partners
555 17th Street, Suite 800
Denver, CO 80202

ATTENTION: Dave Brazeal

RE: Taproot – Produced Water Release, Boomslang Pad, Briggsdale, CO

On August 18, 2021, Environmental Works, Inc. (EWI) received a call from Taproot stating that emergency response services were needed due to a produced water release located in Briggsdale, CO at the Boomslang Pad production site. The following information was provided at the time of the request:

- Unknown quantity of produced water released from failed underground pipeline.

Upon receipt of the emergency response request, Environmental Works, Inc. (EWI) dispatched a Project Manager, 3 Environmental Technicians and 1 DOT Driver to the site. The following is the timeline of events associated with our response:

August 18, 2021

1430 hrs

EWI received a request from Taproot for emergency services. EWI personnel began to secure equipment and resources necessary to complete the project. EWI mobilized a liquid vacuum truck, response vehicles and emergency response trailer.

1630 hrs

EWI personnel arrive onsite and met with representatives from Taproot. A safety briefing was conducted. EWI was tasked with the following: remove all free liquids from the pad, trench and retention pond and find the line break utilizing a hydro vac supplied by Taproot. EWI was also tasked with hand excavating around the concrete pads. The impacted pad was approximately 50' long by 14' wide.

1700 hrs

EWI's liquid vacuum truck was utilized to remove liquids from the pad area near the transformers and near the line break area.

1800 hrs

Liquid vacuum operations have been completed at the Boomslang pad area. The liquid vacuum truck was moved to the retention pond area. EWI estimated approximately 2,500 gallons associated with the release in the pit area.

1845 hrs

The EWI liquid vacuum truck was offloaded at EWS #1 to billed direct billed to Taproot. A bill of lading was used to transport waste offsite.

1900 hrs

Following delivery of an excavator, Crossfire began excavation of impacted soil at the site. Project Manager Adam Kubat departed site, demobilized and ended time at 2100hrs.

1930 hrs

The hydro excavation activities located the line break associated with the release. EWI's liquid vacuum returned to site and resumed impacted water removal at the retention pond area.

2000 hrs

Five soil samples were collected from the primary excavation. Four samples were collected from the sidewall (SW 1 – 4) and one sample was collected from the floor of the excavation (FS 1). An additional background sample was collected from an area outside the impacted area (BS-1). EWI's liquid vacuum truck was full with 2,800 gallons and was parked at the Boomslang pad. EWI personnel were released from the site.

2215hrs

End time.

Excavation

Primary excavation area near the pipe break was approximately 15' long by 30' wide and 11' in depth.

Secondary excavation was approximately 2,250 square feet near the primary excavation and 4 inches deep. The trench leading to the retention pond was approximately 2,000 square feet and 6 inches deep. The retention pond was approximately 850 square feet and 4 feet deep. The runoff of the retention pond area was 750 square feet and 5 inches in depth.

Reporting:

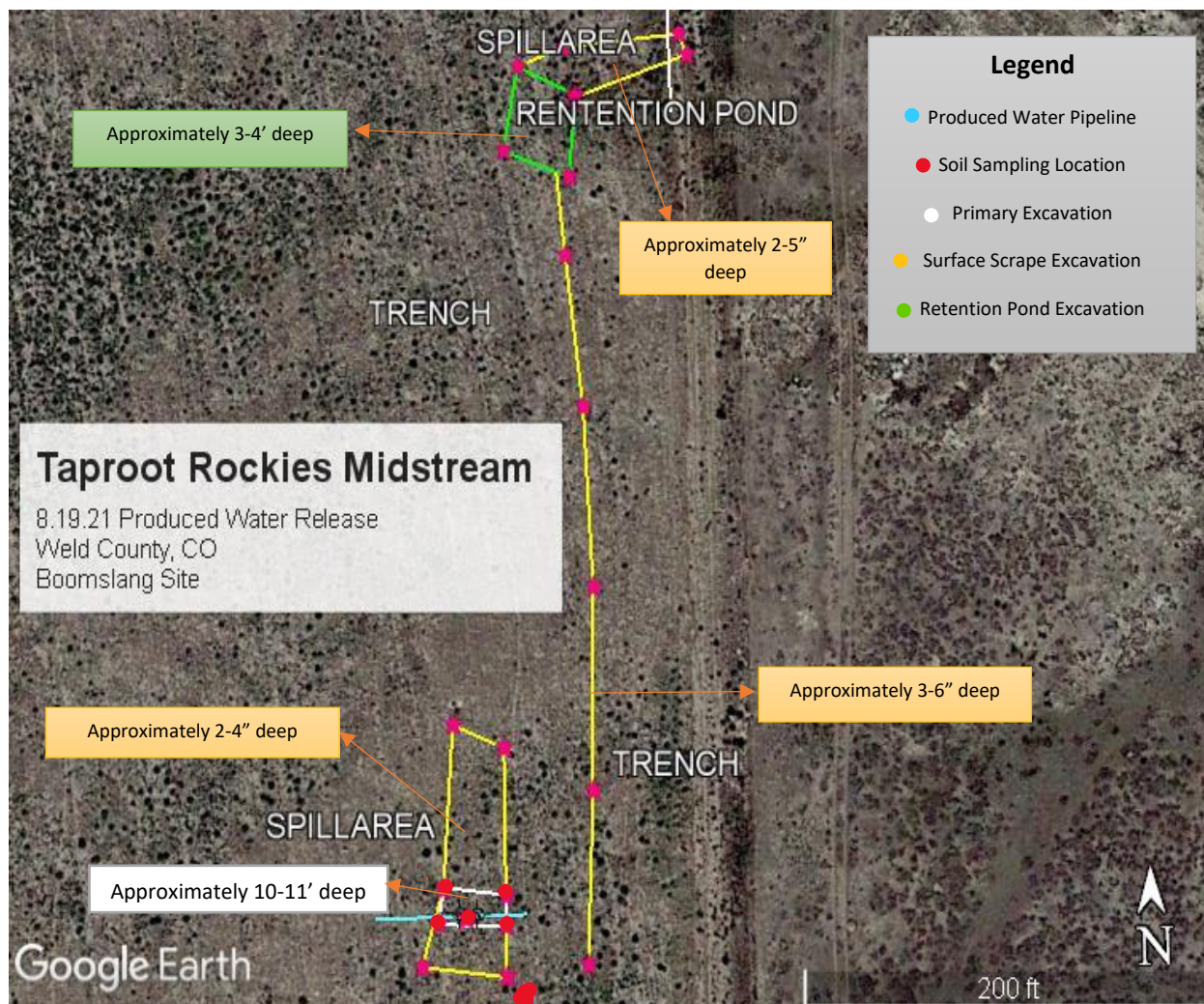
Photo documentation and a site map has been attached to this report to assist your submission of the Supplemental Form 19. Analytical results of the soil samples taken of the area impacted by the release will be provided upon receipt from the laboratory. EWI Project Manager Adam Kubat will be the point of contact for Taproot regarding the analytical results. Contact information for Mr. Kubat has been provided below:

Adam Kubat
507-475-2825
akubat@environmentalworks.com

Environmental Works appreciates the opportunity to be of service. Should there be any additional questions, please contact Adam Kubat at (507) 475-2825.

Best Regards,

Tim King
Emergency Response Project Manager
Environmental Works, Inc.



Taproot. ER for produced water at the Boomslang Pad near Briggsdale, CO.
EWI Project #212500. A1.

Photo: 1

Description:

Initial site conditions at the Boomslang Pad.



Photo: 2

Description:

Initial site conditions at the Boomslang Pad.



Taproot. ER for produced water at the Boomslang Pad near Briggsdale, CO.
EWI Project #212500. A1.

Photo: 3

Description:

Initial site conditions at the Boomslang Pad.



Photo: 4

Description:

A view where the line break occurred.



Taproot. ER for produced water at the Boomslang Pad near Briggsdale, CO.
EWI Project #212500. A1.

Photo: 5

Description:

A view of the collection area/retention pond impacted with product.



Photo: 6

Description:

Another view.



Taproot. ER for produced water at the Boomslang Pad near Briggsdale, CO.
EWI Project #212500. A1.

Photo: 7

Description:

Another view.



Photo: 8

Description:

EWI vacuum truck removing liquids from the pond.



Taproot. ER for produced water at the Boomslang Pad near Briggsdale, CO.
EWI Project #212500. A1.

Photo: 9

Description:

Surface scrape at the Boomslang Pad.



Photo: 10

Description:

The hydro-vac excavating and finding the line break.



Taproot. ER for produced water at the Boomslang Pad near Briggsdale, CO.
EWI Project #212500. A1.

Photo: 11

Description:

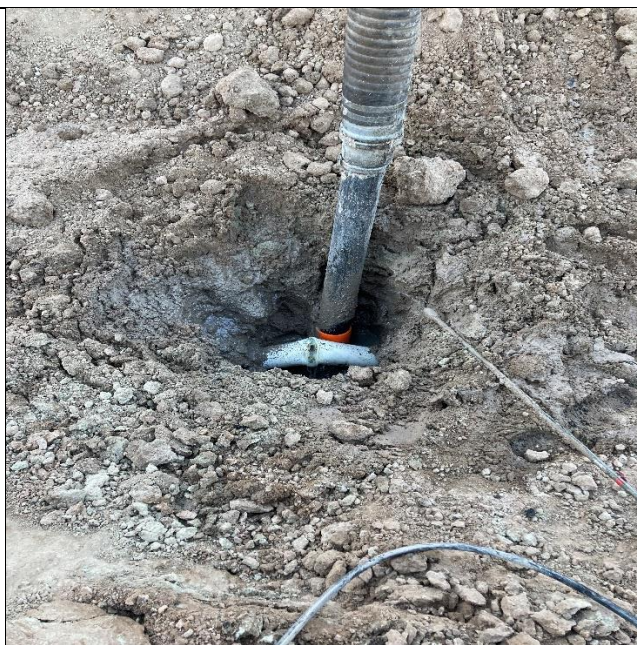
Excavator onsite to excavate impacted soil.



Photo: 12

Description:

Line break discovered.



Taproot. ER for produced water at the Boomslang Pad near Briggsdale, CO.
EWI Project #212500. A1.

Photo: 13

Description:

Additional view of the line break.



Photo: 14

Description:

Hydro excavator at work locating the line break.



Taproot. ER for produced water at the Boomslang Pad near Briggsdale, CO.
EWI Project #212500. A1.

Photo: 15

Description:

Hydro excavator at work
locating the line break.

