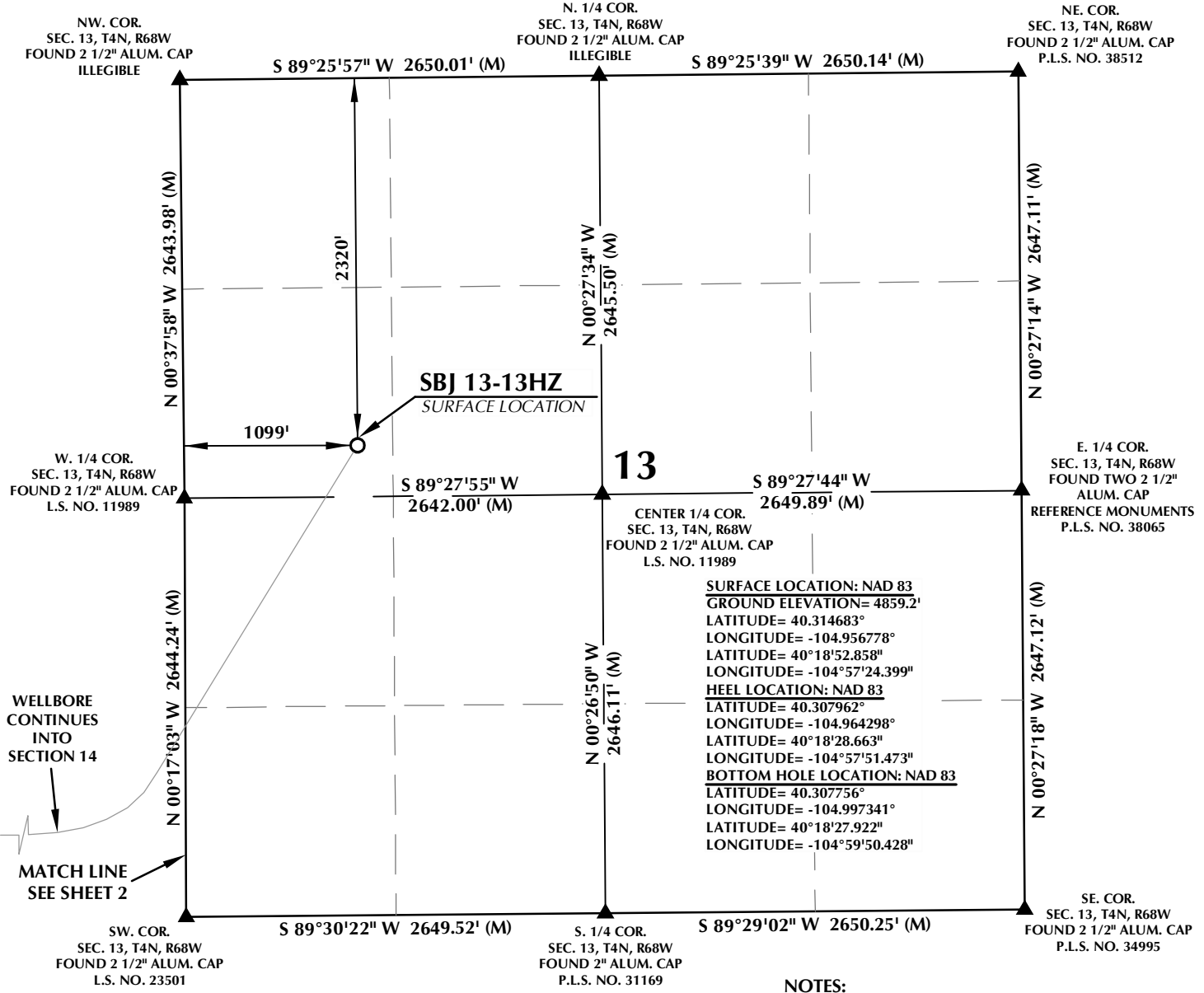


T4N, R68W



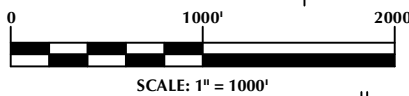
CERTIFICATE OF SURVEYOR:

THIS IS TO CERTIFY THAT THE ABOVE PLAT WAS PREPARED FROM FIELD NOTES OF ACTUAL SURVEYS MADE BY ME OR UNDER MY SUPERVISION AND THAT THE SAME ARE TRUE AND CORRECT TO THE BEST OF MY KNOWLEDGE AND BELIEF. THIS CERTIFICATE DOES NOT REPRESENT A LAND SURVEY PLAT OR IMPROVEMENT SURVEY PLAT AS DEFINED BY C.R.S. 38-51-102 AND CANNOT BE RELIED UPON TO DETERMINE OWNERSHIP.

Randall K. French
 RANDALL K. FRENCH
 PROFESSIONAL LAND SURVEYOR
 COLORADO REGISTRATION NUMBER 38512
 6/3/21

NOTICE: ACCORDING TO COLORADO STATE LAW YOU MUST COMMENCE LEGAL ACTION BASED UPON ANY DEFECT IN THIS SURVEY WITHIN THREE YEARS AFTER YOU FIRST DISCOVER SUCH DEFECT. IN NO EVENT MAY ANY ACTION BASED UPON ANY DEFECT IN THIS SURVEY BE COMMENCED MORE THAN TEN YEARS FROM THE DATE ON THE CERTIFICATION SHOWN HEREON.

NOTE:
 MAGNETIC NORTH IS CURRENT AS OF 2/25/2020.
 MAGNETIC NORTH CHANGES WEST 0°06' PER YEAR.
 MAGNETIC MODEL: WMM-2020.



NOTES:

- ▲ INDICATES SECTION CORNER.
- INDICATES CALCULATED CORNER.
- DRAWING LATITUDE AND LONGITUDE COORDINATES ARE NAD 83 (2011) (EPOCH:2010).
- ELEVATION BASED ON NAVD88 (GEOID12B).
- BASIS OF BEARING DERIVED FROM COLORADO COORDINATE SYSTEM OF 1983 NORTH ZONE.
- ALL MEASURED DISTANCES ARE GRID.
- COMBINED SCALE FACTOR: .99972596 CALCULATED FROM THE NW CORNER OF SECTION 13, T4N, R68W.
- OPERATOR: TRAVIS HOLLAND / PDOP = 1.3.
- SEE ADDENDUM TO WELL LOCATION CERTIFICATE FOR EXISTING IMPROVEMENTS WITHIN 500' OF THE WELL PAD.
- WELL FOOTAGES ARE MEASURED AT RIGHT ANGLES TO THE SECTION LINES.
- THE BOTTOM OF HOLE BEARS S89°11'53"W, 9216' FROM THE HEEL LOCATION.

WELL PAD - SBJ 22-13HZ

SBJ 13-13HZ
 WELL LOCATION CERTIFICATE
 2320' FNL & 1099' FWL (SWNW) (SURFACE)
 LOCATED IN SECTION 13
 537' FSL & 997' FEL (ESE) (HEEL)
 LOCATED IN SECTION 14
 579' FSL & 420' FWL (SWSW) (BOTTOM)
 LOCATED IN SECTION 15
 T4N, R68W, 6TH P.M.
 WELD COUNTY, COLORADO

Kerr-McGee Oil & Gas Onshore L.P.
 1099 18th Street
 Denver, Colorado 80202



CONSULTING, LLC

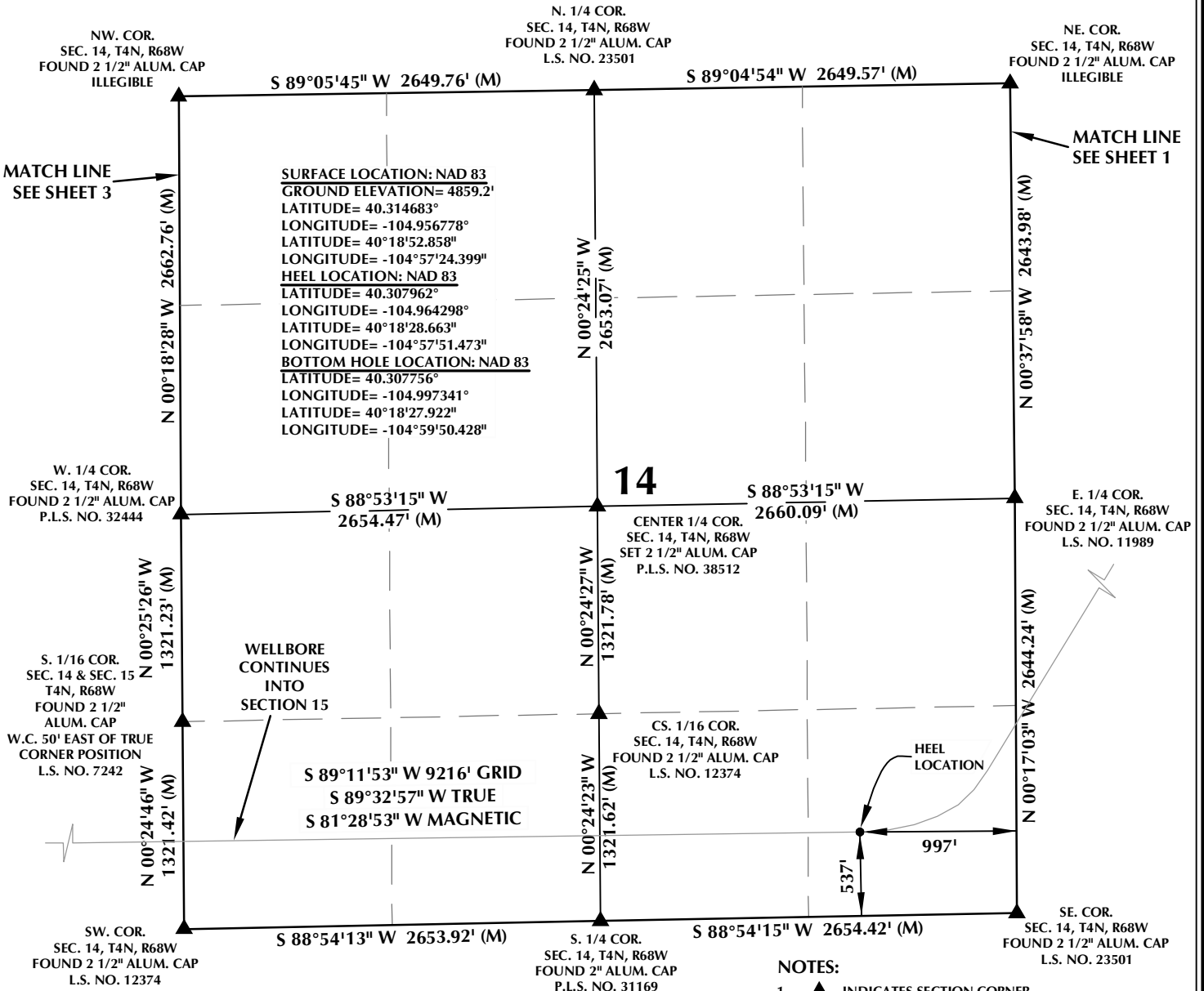
SHERIDAN OFFICE
 1095 Saberton Avenue
 Sheridan, Wyoming 82801
 Phone 307-674-0609

LOVELAND OFFICE
 6706 North Franklin Avenue
 Loveland, Colorado 80538
 Phone 970-776-4331

DRAFTED BY: LMO	CHECKED BY: RKF	SHEET NO: 1 1 OF 3
DATE DRAFTED: 1/14/2020	DATE SURVEYED: 2/25/2020	
REVISED: 6/3/21	FILE NAME: 19-45	

K:\MAPDRAW\2019\19_45_SBJ_&_SK_T4N_R68W_SEC_13\PLAT\SSB\22-13HZ\PLAT.dwg, 6/3/2021 9:45:58 AM, smulid

T4N, R68W



SURFACE LOCATION: NAD 83
 GROUND ELEVATION= 4859.2'
 LATITUDE= 40.314683°
 LONGITUDE= -104.956778°
HEEL LOCATION: NAD 83
 LATITUDE= 40.307962°
 LONGITUDE= -104.964298°
BOTTOM HOLE LOCATION: NAD 83
 LATITUDE= 40.307756°
 LONGITUDE= -104.997341°
 LATITUDE= 40°18'27.922"
 LONGITUDE= -104°59'50.428"

S 89°11'53" W 9216' GRID
 S 89°32'57" W TRUE
 S 81°28'53" W MAGNETIC

WELLBORE CONTINUES INTO SECTION 15

NOTES:

- ▲ INDICATES SECTION CORNER.
- INDICATES CALCULATED CORNER.
- DRAWING LATITUDE AND LONGITUDE COORDINATES ARE NAD 83 (2011)(EPOCH:2010).
- ELEVATION BASED ON NAVD88 (GEOID12B).
- BASIS OF BEARING DERIVED FROM COLORADO COORDINATE SYSTEM OF 1983 NORTH ZONE.
- ALL MEASURED DISTANCES ARE GRID.
- COMBINED SCALE FACTOR: .99972596 CALCULATED FROM THE NW CORNER OF SECTION 13, T4N, R68W.
- OPERATOR: TRAVIS HOLLAND / PDOP = 1.3.
- SEE ADDENDUM TO WELL LOCATION CERTIFICATE FOR EXISTING IMPROVEMENTS WITHIN 500' OF THE WELL PAD.
- WELL FOOTAGES ARE MEASURED AT RIGHT ANGLES TO THE SECTION LINES.
- THE BOTTOM OF HOLE BEARS S89°11'53"W, 9216' FROM THE HEEL LOCATION.

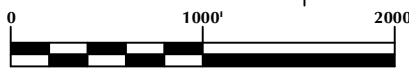
CERTIFICATE OF SURVEYOR:

THIS IS TO CERTIFY THAT THE ABOVE PLAT WAS PREPARED FROM FIELD NOTES OF ACTUAL SURVEYS MADE BY ME OR UNDER MY SUPERVISION AND THAT THE SAME ARE TRUE AND CORRECT TO THE BEST OF MY KNOWLEDGE AND BELIEF. THIS CERTIFICATE DOES NOT REPRESENT A LAND SURVEY PLAT OR IMPROVEMENT SURVEY PLAT AS DEFINED BY C.R.S. 38-51-102 AND CANNOT BE RELIED UPON TO DETERMINE OWNERSHIP.

Randall K. French
 RANDALL K. FRENCH
 PROFESSIONAL LAND SURVEYOR
 COLORADO REGISTRATION NUMBER 38512
 6/3/21

NOTICE: ACCORDING TO COLORADO STATE LAW YOU MUST COMMENCE LEGAL ACTION BASED UPON ANY DEFECT IN THIS SURVEY WITHIN THREE YEARS AFTER YOU FIRST DISCOVER SUCH DEFECT. IN NO EVENT MAY ANY ACTION BASED UPON ANY DEFECT IN THIS SURVEY BE COMMENCED MORE THAN TEN YEARS FROM THE DATE ON THE CERTIFICATION SHOWN HEREON.

NOTE:
 MAGNETIC NORTH IS CURRENT AS OF 2/25/2020.
 MAGNETIC NORTH CHANGES WEST 0°06' PER YEAR.
 MAGNETIC MODEL: WMM-2020.



SCALE: 1" = 1000'

WELL PAD - SBJ 22-13HZ

SBJ 13-13HZ
 WELL LOCATION CERTIFICATE
 2320' FNL & 1099' FWL (SWNW) (SURFACE)
 LOCATED IN SECTION 13
 537' FSL & 997' FEL (ESE) (HEEL)
 LOCATED IN SECTION 14
 579' FSL & 420' FWL (SWSW) (BOTTOM)
 LOCATED IN SECTION 15
 T4N, R68W, 6TH P.M.
 WELD COUNTY, COLORADO

Kerr-McGee Oil & Gas Onshore L.P.
 1099 18th Street
 Denver, Colorado 80202



CONSULTING, LLC

SHERIDAN OFFICE
 1095 Saberton Avenue
 Sheridan, Wyoming 82801
 Phone 307-674-0609

LOVELAND OFFICE
 6706 North Franklin Avenue
 Loveland, Colorado 80538
 Phone 970-776-4331

DRAFTED BY:	LMO	CHECKED BY:	RKF	SHEET NO:
DATE DRAFTED:	1/14/2020	DATE SURVEYED:	2/25/2020	2
REVISED:	6/3/21	FILE NAME:	19-45	2 OF 3

T4N, R68W

N. 1/4 COR.

SEC. 15, T4N, R68W
FOUND 2 1/2" ALUM. CAP
ILLEGIBLE

S 88°59'44" W
1328.33' (M)

S 89°00'19" W
1328.37' (M)

NE. COR.
SEC. 15, T4N, R68W
FOUND 2 1/2" ALUM. CAP
ILLEGIBLE

NW. COR.
SEC. 15, T4N, R68W
FOUND 3 1/4" ALUM. CAP
ILLEGIBLE

S 89°00'19" W 2656.60' (M)

E. 1/16 COR.
SEC. 10 & SEC. 15
T4N, R68W
SET 2 1/2" ALUM. CAP
P.L.S. NO. 38512

N 00°12'48" W 2661.69' (M)

SURFACE LOCATION: NAD 83
GROUND ELEVATION= 4859.2'
LATITUDE= 40.314683°
LONGITUDE= -104.956778°
HEEL LOCATION: NAD 83
LATITUDE= 40.307962°
LONGITUDE= -104.964298°
BOTTOM HOLE LOCATION: NAD 83
LATITUDE= 40.307756°
LONGITUDE= -104.997341°
LATITUDE= 40°18'52.858"
LONGITUDE= -104°57'24.399"
LATITUDE= 40°18'28.663"
LONGITUDE= -104°57'51.473"
LATITUDE= 40°18'27.922"
LONGITUDE= -104°59'50.428"

N 00°17'47" W
2662.35' (M)

N 00°18'28" W 2662.76' (M)

CE. 1/16 COR.
SEC. 15, T4N, R68W
SET 2 1/2" ALUM. CAP W.C.
15' NORTH OF TRUE
CORNER POSITION
P.L.S. NO. 38512

E. 1/4 COR.
SEC. 15, T4N, R68W
FOUND 2 1/2"
ALUM. CAP
P.L.S. NO. 32444

W. 1/4 COR.
SEC. 15, T4N, R68W
FOUND 2 1/2"
ALUM. CAP
P.L.S. NO. 38065

S 89°01'14" W
2660.46' (M)

S 89°00'13" W
1328.81' (M)

S 89°00'54" W
1328.42' (M)

15

CENTER 1/4 COR.
SEC. 15, T4N, R68W
FOUND 2 1/2" ALUM. CAP
P.L.S. NO. 32444

N 00°25'26" W
1321.23' (M)

S. 1/16 COR.
SEC. 14 & SEC. 15, T4N, R68W
FOUND 2 1/2" ALUM. CAP
W.C. 50' EAST OF TRUE
CORNER POSITION
L.S. NO. 7242

N 00°15'32" W 2647.69' (M)

N 00°18'10" W
2643.22' (M)

S 89°11'53" W 9216' GRID
S 89°32'57" W TRUE
S 81°28'53" W MAGNETIC

N 00°24'46" W
1321.42' (M)

420'

579'

BOTTOM OF HOLE:
579' FSL & 420' FWL

MATCH LINE
SEE SHEET 2

SW. COR.
SEC. 15, T4N, R68W
FOUND 2 1/2" ALUM. CAP
ILLEGIBLE

S 88°55'30" W 2662.47' (M)

S. 1/4 COR.
SEC. 15, T4N, R68W
FOUND 2 1/2" ALUM. CAP
L.S. NO. 12374

S 88°59'54" W 2662.63' (M)

SE. COR.
SEC. 15, T4N, R68W
FOUND 2 1/2" ALUM. CAP
L.S. NO. 12374

CERTIFICATE OF SURVEYOR:

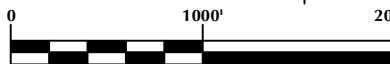
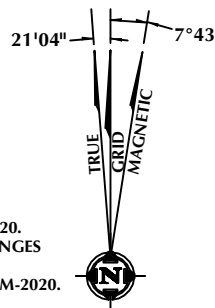
THIS IS TO CERTIFY THAT THE ABOVE PLAT WAS PREPARED FROM FIELD NOTES OF ACTUAL SURVEYS MADE BY ME OR UNDER MY SUPERVISION AND THAT THE SAME ARE TRUE AND CORRECT TO THE BEST OF MY KNOWLEDGE AND BELIEF. THIS CERTIFICATE DOES NOT REPRESENT A LAND SURVEY PLAT OR IMPROVEMENT SURVEY PLAT AS DEFINED BY C.R.S. 38-51-102 AND CANNOT BE RELIED UPON TO DETERMINE OWNERSHIP.

Randall K. French
PROFESSIONAL LAND SURVEYOR
38512

RANDALL K. FRENCH
PROFESSIONAL LAND SURVEYOR
COLORADO REGISTRATION NUMBER 38512
6/3/21

NOTICE:
ACCORDING TO COLORADO STATE LAW YOU MUST COMMENCE LEGAL ACTION BASED UPON ANY DEFECT IN THIS SURVEY WITHIN THREE YEARS AFTER YOU FIRST DISCOVER SUCH DEFECT. IN NO EVENT MAY ANY ACTION BASED UPON ANY DEFECT IN THIS SURVEY BE COMMENCED MORE THAN TEN YEARS FROM THE DATE ON THE CERTIFICATION SHOWN HEREON.

NOTE:
MAGNETIC NORTH IS
CURRENT AS OF 2/25/2020.
MAGNETIC NORTH CHANGES
WEST 0°06' PER YEAR.
MAGNETIC MODEL: WMM-2020.



SCALE: 1" = 1000'

NOTES:

- ▲ INDICATES SECTION CORNER.
- INDICATES CALCULATED CORNER.
- DRAWING LATITUDE AND LONGITUDE COORDINATES ARE NAD 83 (2011) (EPOCH:2010).
- ELEVATION BASED ON NAVD88 (GEOID12B).
- BASIS OF BEARING DERIVED FROM COLORADO COORDINATE SYSTEM OF 1983 NORTH ZONE.
- ALL MEASURED DISTANCES ARE GRID.
- COMBINED SCALE FACTOR: .99972596 CALCULATED FROM THE NW. CORNER OF SECTION 13, T4N, R68W.
- OPERATOR: TRAVIS HOLLAND / PDOP = 1.3.
- SEE ADDENDUM TO WELL LOCATION CERTIFICATE FOR EXISTING IMPROVEMENTS WITHIN 500' OF THE WELL PAD.
- WELL FOOTAGES ARE MEASURED AT RIGHT ANGLES TO THE SECTION LINES.
- THE BOTTOM OF HOLE BEARS S89°11'53"W, 9216' FROM THE HEEL LOCATION.

WELL PAD - SBJ 22-13HZ

SBJ 13-13HZ
WELL LOCATION CERTIFICATE
2320' FNL & 1099' FWL (SWNW) (SURFACE)
LOCATED IN SECTION 13
537' FSL & 997' FEL (ESE) (HEEL)
LOCATED IN SECTION 14
579' FSL & 420' FWL (SWSW) (BOTTOM)
LOCATED IN SECTION 15
T4N, R68W, 6TH P.M.
WELD COUNTY, COLORADO

**Kerr-McGee Oil &
Gas Onshore L.P.**
1099 18th Street
Denver, Colorado 80202



CONSULTING, LLC

SHERIDAN OFFICE
1095 Saberton Avenue
Sheridan, Wyoming 82801
Phone 307-674-0609

LOVELAND OFFICE
6706 North Franklin Avenue
Loveland, Colorado 80538
Phone 970-776-4331

DRAFTED BY:	LMO	CHECKED BY:	RKF	SHEET NO:
DATE DRAFTED:	1/14/2020	DATE SURVEYED:	2/25/2020	3
REVISED:	6/3/21	FILE NAME:	19-45	3 OF 3