

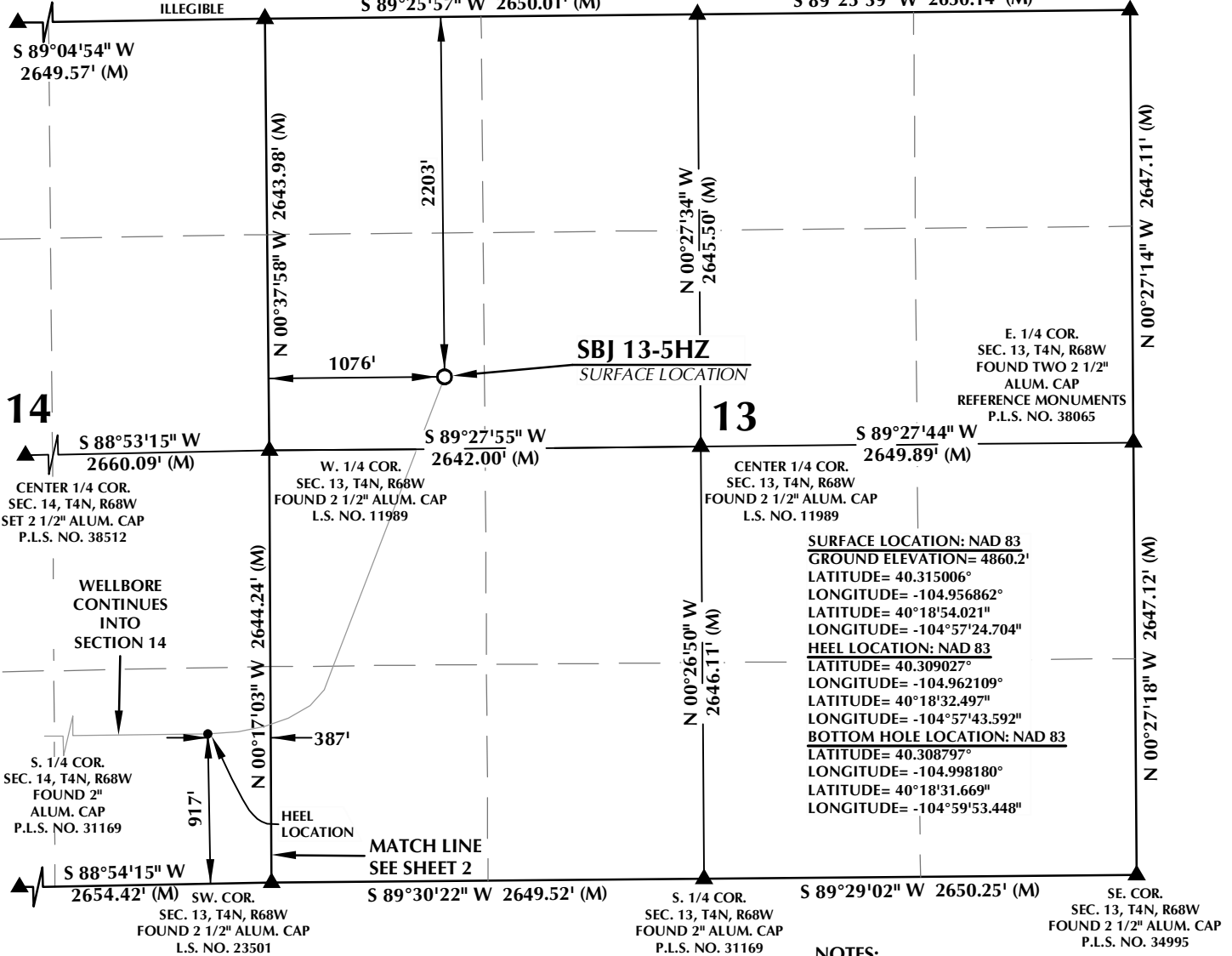
# T4N, R68W

N. 1/4 COR.  
SEC. 14, T4N, R68W  
FOUND 2 1/2"  
ALUM. CAP  
L.S. NO. 23501

NW. COR.  
SEC. 13, T4N, R68W  
FOUND 2 1/2" ALUM. CAP  
ILLEGIBLE

N. 1/4 COR.  
SEC. 13, T4N, R68W  
FOUND 2 1/2" ALUM. CAP  
ILLEGIBLE

NE. COR.  
SEC. 13, T4N, R68W  
FOUND 2 1/2" ALUM. CAP  
P.L.S. NO. 38512



**SURFACE LOCATION: NAD 83**  
GROUND ELEVATION= 4860.2'  
LATITUDE= 40.315006°  
LONGITUDE= -104.956862°  
LATITUDE= 40°18'54.021"  
LONGITUDE= -104°57'24.704"  
**HEEL LOCATION: NAD 83**  
LATITUDE= 40.309027°  
LONGITUDE= -104.962109°  
LATITUDE= 40°18'32.497"  
LONGITUDE= -104°57'43.592"  
**BOTTOM HOLE LOCATION: NAD 83**  
LATITUDE= 40.308797°  
LONGITUDE= -104.998180°  
LATITUDE= 40°18'31.669"  
LONGITUDE= -104°59'53.448"

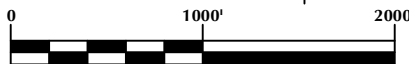
## CERTIFICATE OF SURVEYOR:

THIS IS TO CERTIFY THAT THE ABOVE PLAT WAS PREPARED FROM FIELD NOTES OF ACTUAL SURVEY MADE BY ME OR UNDER MY SUPERVISION AND THAT THE SAME ARE TRUE AND CORRECT TO THE BEST OF MY KNOWLEDGE AND BELIEF. THIS CERTIFICATE DOES NOT REPRESENT A LAND SURVEY PLAT OR IMPROVEMENT SURVEY PLAT AS DEFINED BY C.R.S. 38-51-102 AND CANNOT BE RELIED UPON TO DETERMINE OWNERSHIP.

*Randall K. French*  
PROFESSIONAL LAND SURVEYOR  
38512  
6/3/21  
RANDALL K. FRENCH  
PROFESSIONAL LAND SURVEYOR  
COLORADO REGISTRATION NUMBER 38512

NOTICE:  
ACCORDING TO COLORADO STATE LAW YOU MUST COMMENCE LEGAL ACTION BASED UPON ANY DEFECT IN THIS SURVEY WITHIN THREE YEARS AFTER YOU FIRST DISCOVER SUCH DEFECT. IN NO EVENT MAY ANY ACTION BASED UPON ANY DEFECT IN THIS SURVEY BE COMMENCED MORE THAN TEN YEARS FROM THE DATE ON THE CERTIFICATION SHOWN HEREON.

NOTE:  
MAGNETIC NORTH IS  
CURRENT AS OF 2/25/2020.  
MAGNETIC NORTH CHANGES  
WEST 0°06' PER YEAR.  
MAGNETIC MODEL: WMM-2020.



SCALE: 1" = 1000'

## NOTES:

- ▲ INDICATES SECTION CORNER.
- INDICATES CALCULATED CORNER.
- DRAWING LATITUDE AND LONGITUDE COORDINATES ARE NAD 83 (2011) (EPOCH:2010).
- ELEVATION BASED ON NAVD88 (GEOID12B).
- BASIS OF BEARING DERIVED FROM COLORADO COORDINATE SYSTEM OF 1983 NORTH ZONE.
- ALL MEASURED DISTANCES ARE GRID.
- COMBINED SCALE FACTOR: .99972596 CALCULATED FROM THE NW. CORNER OF SECTION 13, T4N, R68W.
- OPERATOR: TRAVIS HOLLAND / PDOP = 1.5.
- SEE ADDENDUM TO WELL LOCATION CERTIFICATE FOR EXISTING IMPROVEMENTS WITHIN 500' OF THE WELL PAD.
- WELL FOOTAGES ARE MEASURED AT RIGHT ANGLES TO THE SECTION LINES.
- THE BOTTOM OF HOLE BEARS S89°11'13"W, 10060' FROM THE HEEL LOCATION.

## WELL PAD - SBJ 22-13HZ

SBJ 13-5HZ  
WELL LOCATION CERTIFICATE  
2203' FNL & 1076' FWL (SWNW) (SURFACE)  
LOCATED IN SECTION 13  
917' FSL & 387' FEL (SESE) (HEEL)  
LOCATED IN SECTION 14  
961' FSL & 185' FWL (SWSW) (BOTTOM)  
LOCATED IN SECTION 15  
T4N, R68W, 6TH P.M.  
WELD COUNTY, COLORADO

**Kerr-McGee Oil &  
Gas Onshore L.P.**  
1099 18th Street  
Denver, Colorado 80202



## CONSULTING, LLC

SHERIDAN OFFICE  
1095 Saberton Avenue  
Sheridan, Wyoming 82801  
Phone 307-674-0609

LOVELAND OFFICE  
6706 North Franklin Avenue  
Loveland, Colorado 80538  
Phone 970-776-4331

DRAFTED BY:	LMO	CHECKED BY:	RKF	SHEET NO:
DATE DRAFTED:	1/14/2020	DATE SURVEYED:	2/25/2020	1
REVISED:	6/3/21	FILE NAME:	19-45	1 OF 3

# T4N, R68W

N. 1/4 COR.  
SEC. 14, T4N, R68W  
FOUND 2 1/2" ALUM. CAP  
L.S. NO. 23501

NE. COR.  
SEC. 14, T4N, R68W  
FOUND 2 1/2" ALUM. CAP  
ILLEGIBLE

NW. COR.  
SEC. 14, T4N, R68W  
FOUND 2 1/2" ALUM. CAP  
ILLEGIBLE

S 89°05'45" W 2649.76' (M)

S 89°04'54" W 2649.57' (M)

MATCH LINE  
SEE SHEET 3

MATCH LINE  
SEE SHEET 1

**SURFACE LOCATION: NAD 83**  
GROUND ELEVATION= 4860.2'  
LATITUDE= 40.315006°  
LONGITUDE= -104.956862°  
LATITUDE= 40°18'54.021"  
LONGITUDE= -104°57'24.704"  
**HEEL LOCATION: NAD 83**  
LATITUDE= 40.309027°  
LONGITUDE= -104.962109°  
LATITUDE= 40°18'32.497"  
LONGITUDE= -104°57'43.592"  
**BOTTOM HOLE LOCATION: NAD 83**  
LATITUDE= 40.308797°  
LONGITUDE= -104.998180°  
LATITUDE= 40°18'31.669"  
LONGITUDE= -104°59'53.448"

N 00°18'28" W 2662.76' (M)

N 00°24'25" W  
2653.07' (M)

N 00°37'58" W 2643.98' (M)

W. 1/4 COR.  
SEC. 14, T4N, R68W  
FOUND 2 1/2" ALUM. CAP  
P.L.S. NO. 32444

S 88°53'15" W  
2654.47' (M)

14

S 88°53'15" W  
2660.09' (M)

E. 1/4 COR.  
SEC. 14, T4N, R68W  
FOUND 2 1/2" ALUM. CAP  
L.S. NO. 11989

CENTER 1/4 COR.  
SEC. 14, T4N, R68W  
SET 2 1/2" ALUM. CAP  
P.L.S. NO. 38512

N 00°25'26" W  
1321.23' (M)

N 00°24'27" W  
1321.78' (M)

N 00°17'03" W 2644.24' (M)

S. 1/16 COR.  
SEC. 14 & SEC. 15  
T4N, R68W  
FOUND 2 1/2" ALUM. CAP  
W.C. 50' EAST OF TRUE  
CORNER POSITION  
L.S. NO. 7242

S 89°11'13" W 10060' GRID  
S 89°32'16" W TRUE  
S 81°28'13" W MAGNETIC

CS. 1/16 COR.  
SEC. 14, T4N, R68W  
FOUND 2 1/2" ALUM. CAP  
L.S. NO. 12374

HEEL LOCATION

WELLBORE  
CONTINUES  
INTO  
SECTION 15

N 00°24'46" W  
1321.42' (M)

N 00°24'23" W  
1321.62' (M)

S 88°54'13" W 2653.92' (M)

S. 1/4 COR.  
SEC. 14, T4N, R68W  
FOUND 2" ALUM. CAP  
P.L.S. NO. 31169

SE. COR.  
SEC. 14, T4N, R68W  
FOUND 2 1/2" ALUM. CAP  
L.S. NO. 23501

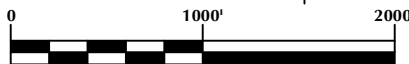
## CERTIFICATE OF SURVEYOR:

THIS IS TO CERTIFY THAT THE ABOVE PLAN WAS PREPARED FROM FIELD NOTES OF ACTUAL SURVEYS MADE BY ME OR UNDER MY SUPERVISION AND THAT THE SAME ARE TRUE AND CORRECT TO THE BEST OF MY KNOWLEDGE AND BELIEF. THIS CERTIFICATE DOES NOT REPRESENT A LAND SURVEY OR IMPROVEMENT SURVEY PLAN AS DEFINED BY C.R.S. 38-51-102 AND CANNOT BE RELIED UPON TO DETERMINE OWNERSHIP.

*Randall K. French*  
PROFESSIONAL LAND SURVEYOR  
38512  
6/3/21  
RANDALL K. FRENCH  
PROFESSIONAL LAND SURVEYOR  
COLORADO REGISTRATION NUMBER 38512

NOTICE:  
ACCORDING TO COLORADO STATE LAW YOU MUST COMMENCE LEGAL ACTION BASED UPON ANY DEFECT IN THIS SURVEY WITHIN THREE YEARS AFTER YOU FIRST DISCOVER SUCH DEFECT. IN NO EVENT MAY ANY ACTION BASED UPON ANY DEFECT IN THIS SURVEY BE COMMENCED MORE THAN TEN YEARS FROM THE DATE ON THE CERTIFICATION SHOWN HEREON.

NOTE:  
MAGNETIC NORTH IS  
CURRENT AS OF 2/25/2020.  
MAGNETIC NORTH CHANGES  
WEST 0°06' PER YEAR.  
MAGNETIC MODEL: WMM-2020.



SCALE: 1" = 1000'

## NOTES:

- ▲ INDICATES SECTION CORNER.
- INDICATES CALCULATED CORNER.
- DRAWING LATITUDE AND LONGITUDE COORDINATES ARE NAD 83 (2011)(EPOCH:2010).
- ELEVATION BASED ON NAVD88 (GEOID12B).
- BASIS OF BEARING DERIVED FROM COLORADO COORDINATE SYSTEM OF 1983 NORTH ZONE.
- ALL MEASURED DISTANCES ARE GRID.
- COMBINED SCALE FACTOR: .99972596 CALCULATED FROM THE NW. CORNER OF SECTION 13, T4N, R68W.
- OPERATOR: TRAVIS HOLLAND / PDOP = 1.5.
- SEE ADDENDUM TO WELL LOCATION CERTIFICATE FOR EXISTING IMPROVEMENTS WITHIN 500' OF THE WELL PAD.
- WELL FOOTAGES ARE MEASURED AT RIGHT ANGLES TO THE SECTION LINES.
- THE BOTTOM OF HOLE BEARS S89°11'13"W, 10060' FROM THE HEEL LOCATION.

## WELL PAD - SBJ 22-13HZ

SBJ 13-5HZ  
WELL LOCATION CERTIFICATE  
2203' FNL & 1076' FWL (SWNW) (SURFACE)  
LOCATED IN SECTION 13  
917' FSL & 387' FEL (SESE) (HEEL)  
LOCATED IN SECTION 14  
961' FSL & 185' FWL (SWSW) (BOTTOM)  
LOCATED IN SECTION 15  
T4N, R68W, 6TH P.M.  
WELD COUNTY, COLORADO

**Kerr-McGee Oil &  
Gas Onshore L.P.**  
1099 18th Street  
Denver, Colorado 80202



## CONSULTING, LLC

SHERIDAN OFFICE  
1095 Saberton Avenue  
Sheridan, Wyoming 82801  
Phone 307-674-0609

LOVELAND OFFICE  
6706 North Franklin Avenue  
Loveland, Colorado 80538  
Phone 970-776-4331

DRAFTED BY:	SJM	CHECKED BY:	RKF	SHEET NO:
DATE DRAFTED:	6/3/21	DATE SURVEYED:	2/25/2020	2
REVISED:		FILE NAME:	19-45	2 OF 3

# T4N, R68W

N. 1/4 COR.

SEC. 15, T4N, R68W  
FOUND 2 1/2" ALUM. CAP  
ILLEGIBLE

S 88°59'44" W  
1328.33' (M)

S 89°00'19" W  
1328.37' (M)

NE. COR.  
SEC. 15, T4N, R68W  
FOUND 2 1/2" ALUM. CAP  
ILLEGIBLE

NW. COR.  
SEC. 15, T4N, R68W  
FOUND 3 1/4" ALUM. CAP  
ILLEGIBLE

S 89°00'19" W 2656.60' (M)

E. 1/16 COR.  
SEC. 10 & SEC. 15  
T4N, R68W  
SET 2 1/2" ALUM. CAP  
P.L.S. NO. 38512

**SURFACE LOCATION: NAD 83**  
GROUND ELEVATION= 4860.2'  
LATITUDE= 40.315006°  
LONGITUDE= -104.956862°  
LATITUDE= 40°18'54.021"  
LONGITUDE= -104°57'24.704"  
**HEEL LOCATION: NAD 83**  
LATITUDE= 40.309027°  
LONGITUDE= -104.962109°  
LATITUDE= 40°18'32.497"  
LONGITUDE= -104°57'43.592"  
**BOTTOM HOLE LOCATION: NAD 83**  
LATITUDE= 40.308797°  
LONGITUDE= -104.998180°  
LATITUDE= 40°18'31.669"  
LONGITUDE= -104°59'53.448"

N 00°12'48" W 2661.69' (M)

N 00°17'47" W  
2662.35' (M)

N 00°18'28" W 2662.76' (M)

CE. 1/16 COR.  
SEC. 15, T4N, R68W  
SET 2 1/2" ALUM. CAP W.C.  
15' NORTH OF TRUE  
CORNER POSITION  
P.L.S. NO. 38512

S 89°00'13" W  
1328.81' (M)

S 89°00'54" W  
1328.42' (M)

S. 1/16 COR.  
SEC. 14 & SEC. 15, T4N, R68W  
FOUND 2 1/2" ALUM. CAP  
W.C. 50' EAST OF TRUE  
CORNER POSITION  
L.S. NO. 7242

W. 1/4 COR.  
SEC. 15, T4N, R68W  
FOUND 2 1/2"  
ALUM. CAP  
P.L.S. NO. 38065

S 89°01'14" W  
2660.46' (M)

15

CENTER 1/4 COR.  
SEC. 15, T4N, R68W  
FOUND 2 1/2" ALUM. CAP  
P.L.S. NO. 32444

E. 1/4 COR.  
SEC. 15, T4N, R68W  
FOUND 2 1/2"  
ALUM. CAP  
P.L.S. NO. 32444

N 00°25'26" W  
1321.23' (M)

N 00°15'32" W 2647.69' (M)

N 00°18'10" W  
2643.22' (M)

N 00°24'46" W  
1321.42' (M)

BOTTOM OF HOLE:  
961' FSL & 185' FWL

185'

961'

S 89°11'13" W 10060' GRID  
S 89°32'16" W TRUE  
S 81°28'13" W MAGNETIC

MATCH LINE  
SEE SHEET 2

SW. COR.  
SEC. 15, T4N, R68W  
FOUND 2 1/2" ALUM. CAP  
ILLEGIBLE

S 88°55'30" W 2662.47' (M)

S. 1/4 COR.  
SEC. 15, T4N, R68W  
FOUND 2 1/2" ALUM. CAP  
L.S. NO. 12374

S 88°59'54" W 2662.63' (M)

SE. COR.  
SEC. 15, T4N, R68W  
FOUND 2 1/2" ALUM. CAP  
L.S. NO. 12374

## CERTIFICATE OF SURVEYOR:

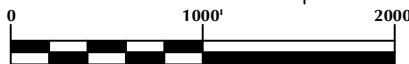
THIS IS TO CERTIFY THAT THE ABOVE PLAT WAS PREPARED FROM FIELD NOTES OF ACTUAL SURVEYS MADE BY ME OR UNDER MY SUPERVISION AND TO THE SAME TRUTH AND CORRECT TO THE BEST OF MY KNOWLEDGE AND BELIEF. THIS CERTIFICATE DOES NOT REPRESENT A LAND SURVEY PLAT OR IMPROVEMENT SURVEY PLAT AS DEFINED BY C.R.S. 38-51-102 AND CANNOT BE RELIED UPON TO DETERMINE OWNERSHIP.

*Randall K. French*  
PROFESSIONAL LAND SURVEYOR  
38512

RANDALL K. FRENCH  
PROFESSIONAL LAND SURVEYOR  
COLORADO REGISTRATION NUMBER 38512  
6/3/21

NOTICE:  
ACCORDING TO COLORADO STATE LAW YOU MUST COMMENCE LEGAL ACTION BASED UPON ANY DEFECT IN THIS SURVEY WITHIN THREE YEARS AFTER YOU FIRST DISCOVER SUCH DEFECT. IN NO EVENT MAY ANY ACTION BASED UPON ANY DEFECT IN THIS SURVEY BE COMMENCED MORE THAN TEN YEARS FROM THE DATE ON THE CERTIFICATION SHOWN HEREON.

NOTE:  
MAGNETIC NORTH IS  
CURRENT AS OF 2/25/2020.  
MAGNETIC NORTH CHANGES  
WEST 0°06' PER YEAR.  
MAGNETIC MODEL: WMM-2020.



SCALE: 1" = 1000'

## NOTES:

- ▲ INDICATES SECTION CORNER.
- INDICATES CALCULATED CORNER.
- DRAWING LATITUDE AND LONGITUDE COORDINATES ARE NAD 83 (2011) (EPOCH:2010).
- ELEVATION BASED ON NAVD88 (GEOID12B).
- BASIS OF BEARING DERIVED FROM COLORADO COORDINATE SYSTEM OF 1983 NORTH ZONE.
- ALL MEASURED DISTANCES ARE GRID.
- COMBINED SCALE FACTOR: .99972596 CALCULATED FROM THE NW. CORNER OF SECTION 13, T4N, R68W.
- OPERATOR: TRAVIS HOLLAND / PDOP = 1.5.
- SEE ADDENDUM TO WELL LOCATION CERTIFICATE FOR EXISTING IMPROVEMENTS WITHIN 500' OF THE WELL PAD.
- WELL FOOTAGES ARE MEASURED AT RIGHT ANGLES TO THE SECTION LINES.
- THE BOTTOM OF HOLE BEARS S89°11'13"W, 10060' FROM THE HEEL LOCATION.

## WELL PAD - SBJ 22-13HZ

SBJ 13-5HZ  
WELL LOCATION CERTIFICATE  
2203' FNL & 1076' FWL (SWNW) (SURFACE)  
LOCATED IN SECTION 13  
917' FSL & 387' FEL (SESE) (HEEL)  
LOCATED IN SECTION 14  
961' FSL & 185' FWL (SWSW) (BOTTOM)  
LOCATED IN SECTION 15  
T4N, R68W, 6TH P.M.  
WELD COUNTY, COLORADO

**Kerr-McGee Oil &  
Gas Onshore L.P.**  
1099 18th Street  
Denver, Colorado 80202



## CONSULTING, LLC

SHERIDAN OFFICE  
1095 Saberton Avenue  
Sheridan, Wyoming 82801  
Phone 307-674-0609

LOVELAND OFFICE  
6706 North Franklin Avenue  
Loveland, Colorado 80538  
Phone 970-776-4331

DRAFTED BY:	SJM	CHECKED BY:	RKF	SHEET NO:
DATE DRAFTED:	6/3/21	DATE SURVEYED:	2/25/2020	3
REVISED:		FILE NAME:	19-45	3 OF 3