



GEOGUIDANCE

AEF 4-62-33-6457CSB

Scale 2":100' - TVD

5/14/2018 7:10 AM

Oper. Company: HIGHPOINT RESOURCES

State: CO

Well: ANSCHUTZ EQUUS FARMS 4-62-33-6457CSB

County: WELD

Field: DJ BASIN

Country: U.S.

Rig: SAVANNA 803

Location: ANSCHUTZ EQUUS FARMS 4-62-32 SESE PAD

Well ID: 05-123-45306

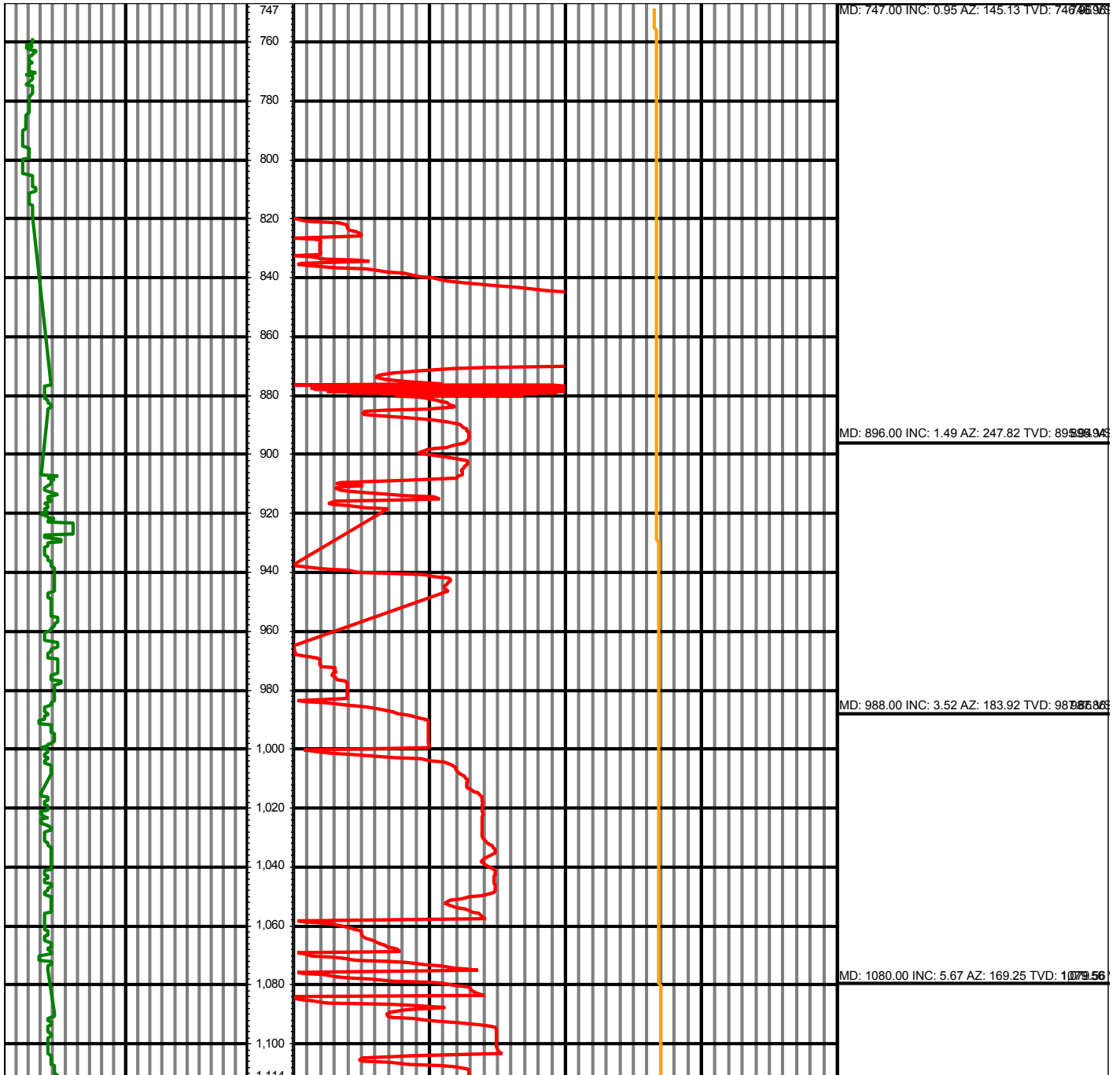
Start Date:

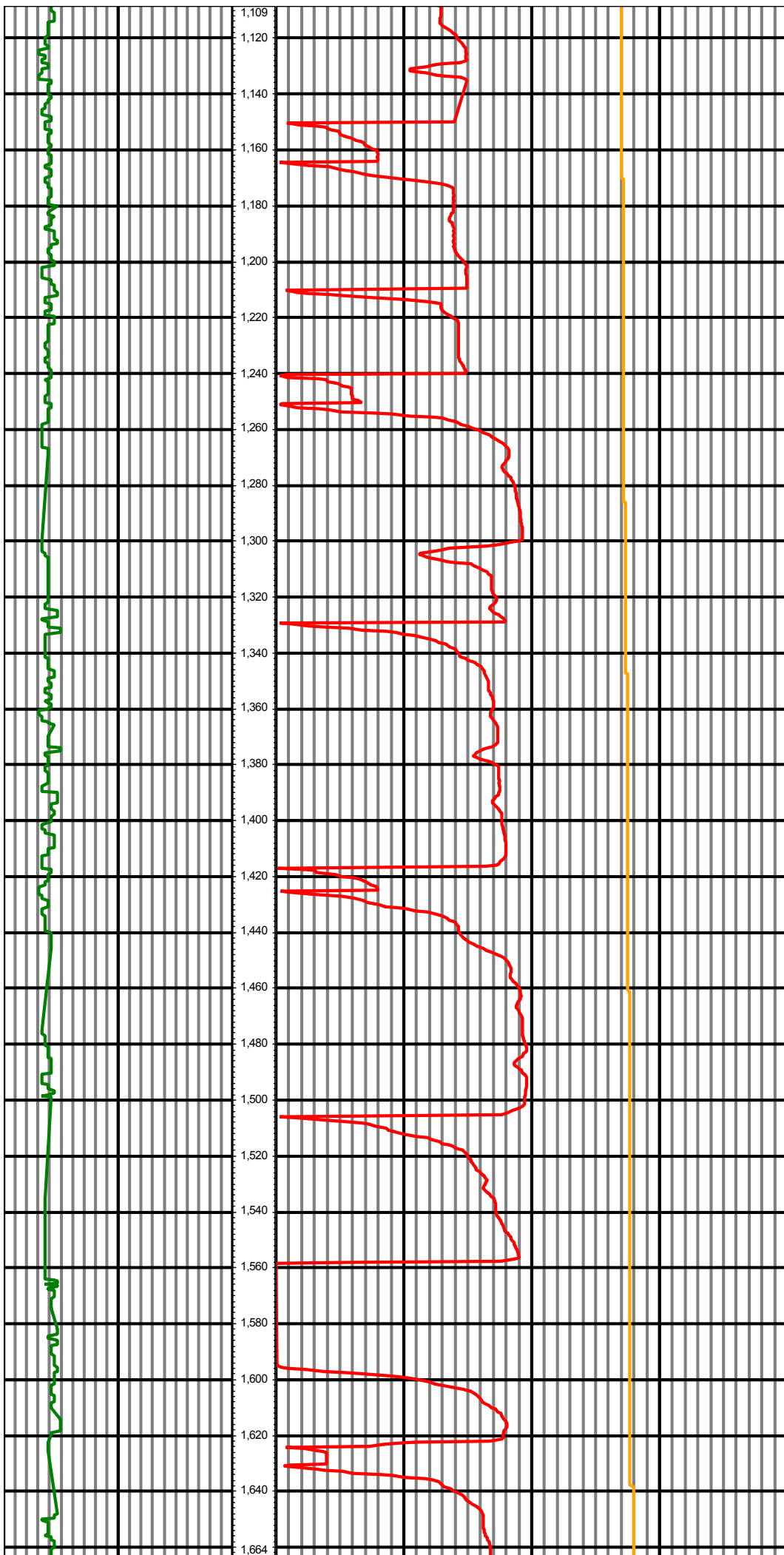
Job Number: CO1801004

End Date:

*All interpretations are opinions based on inferences from electrical or other measurements and we cannot and do not guarantee the accuracy or correctness of any interpretation, and we shall not except in the case of gross or willful negligence on our part, be liable or responsible for any loss, cost damages or expenses incurred or sustained by anyone resulting from an interpretation made by any of our officers, agents, or employees.*

0.00 GR(API) 300.00 TVD 0.00 ROP(FT/HRS) 1,000.00 0.00 TEMP(degF) 320.00 Surveys(MD/INC/AZ/TVD/V/S)





MD: 1171.00 INC: 8.35 AZ: 159.14 TVD: 1169.88

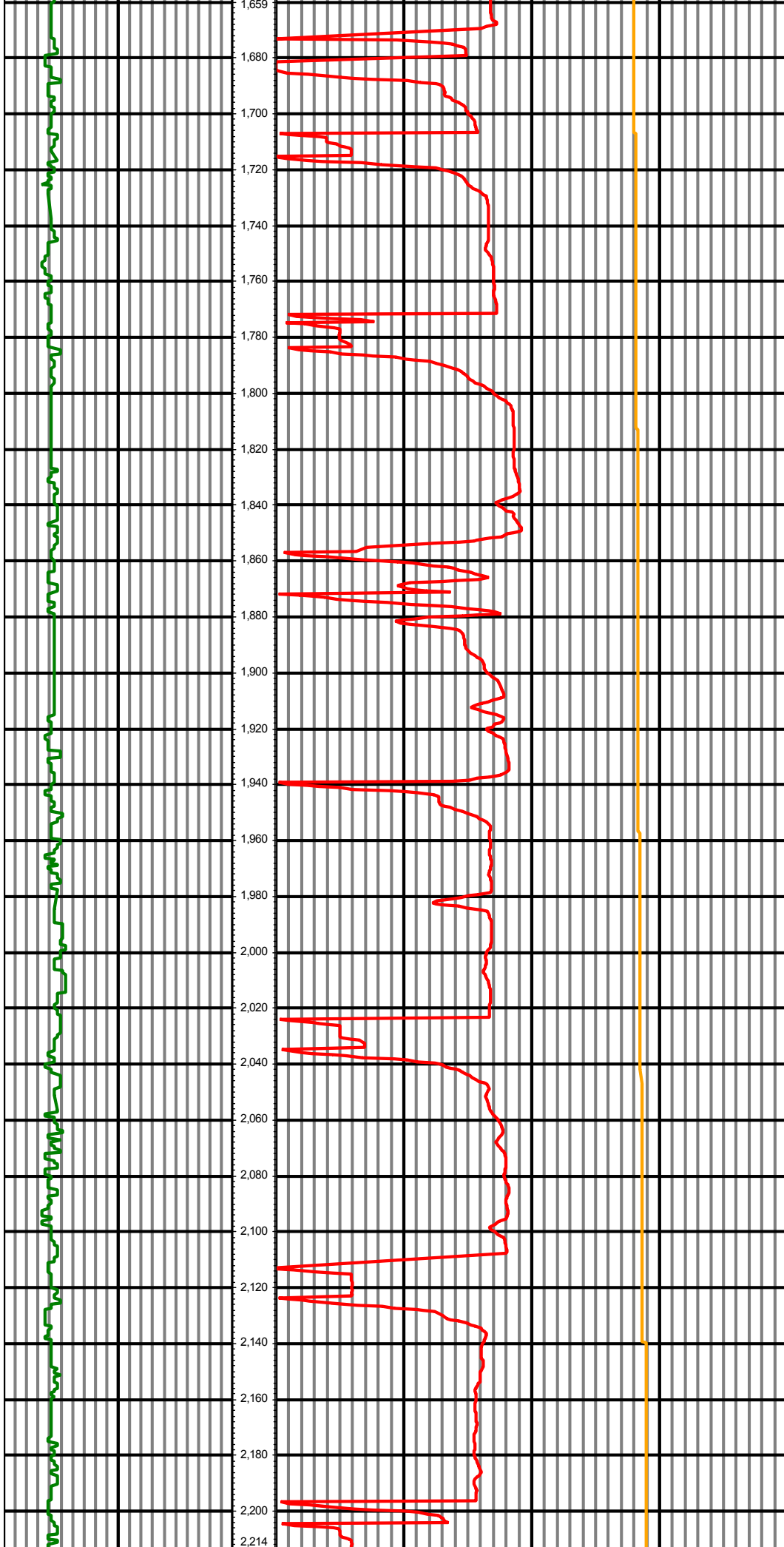
MD: 1262.00 INC: 10.90 AZ: 160.19 TVD: 1259.59

MD: 1353.00 INC: 10.90 AZ: 163.09 TVD: 1349.35

MD: 1443.00 INC: 12.84 AZ: 163.80 TVD: 1439.02

MD: 1534.00 INC: 12.66 AZ: 167.58 TVD: 1528.78

MD: 1626.00 INC: 12.70 AZ: 167.67 TVD: 1618.53



MD: 1716.00 INC: 15.78 AZ: 164.59 TVD:17022763

MD: 1807.00 INC: 19.21 AZ: 160.81 TVD:17692534

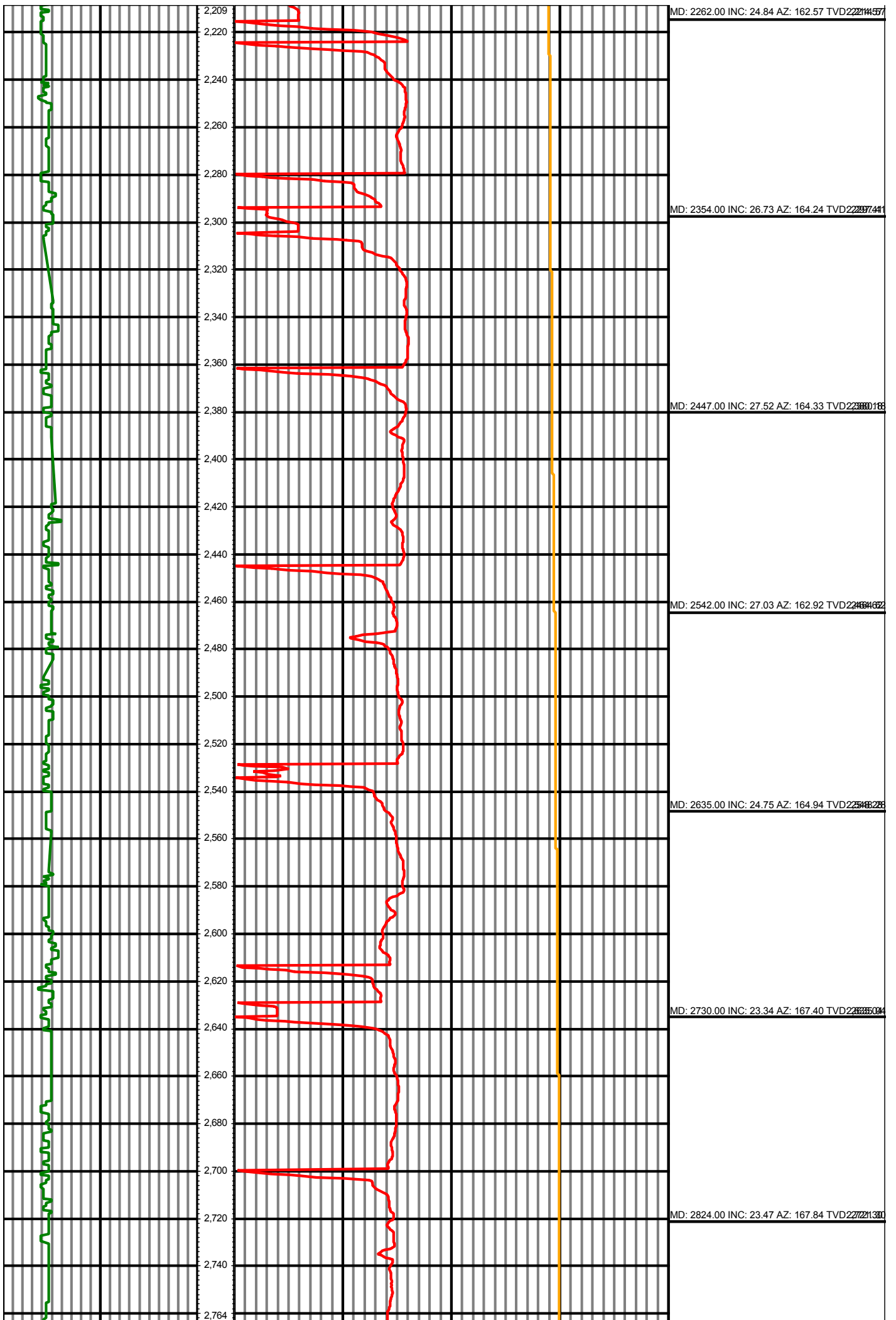
MD: 1898.00 INC: 19.30 AZ: 158.88 TVD:18754453

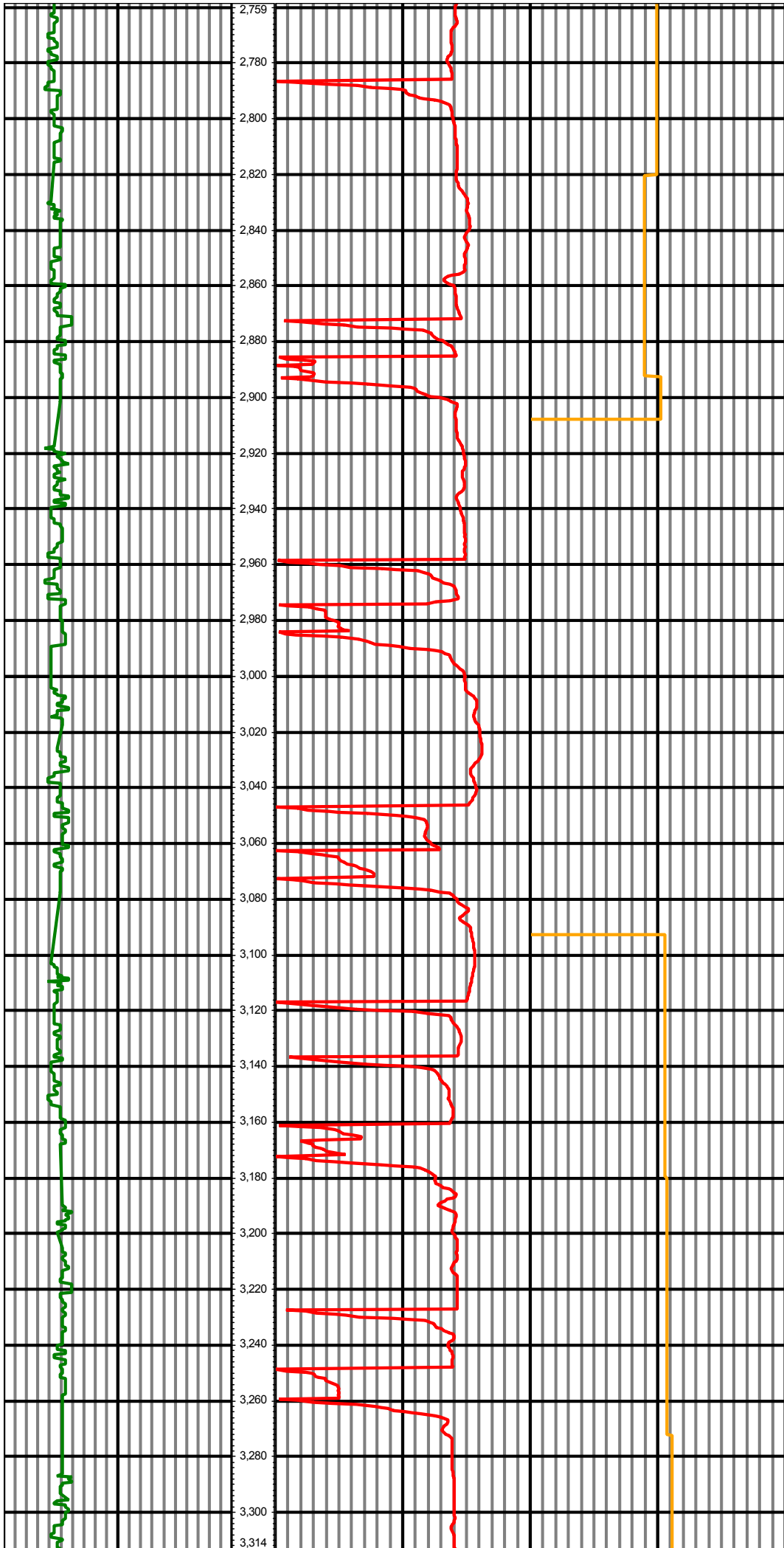
MD: 1989.00 INC: 18.77 AZ: 157.03 TVD:19831477

MD: 2080.00 INC: 21.01 AZ: 158.09 TVD:20947034

MD: 2171.00 INC: 23.03 AZ: 161.69 TVD:22131440

MD: 2262.00 INC: 24.84 AZ: 162.57 TVD:22214577





MD: 2918.00 INC: 23.60 AZ: 166.87 TVD22817.48

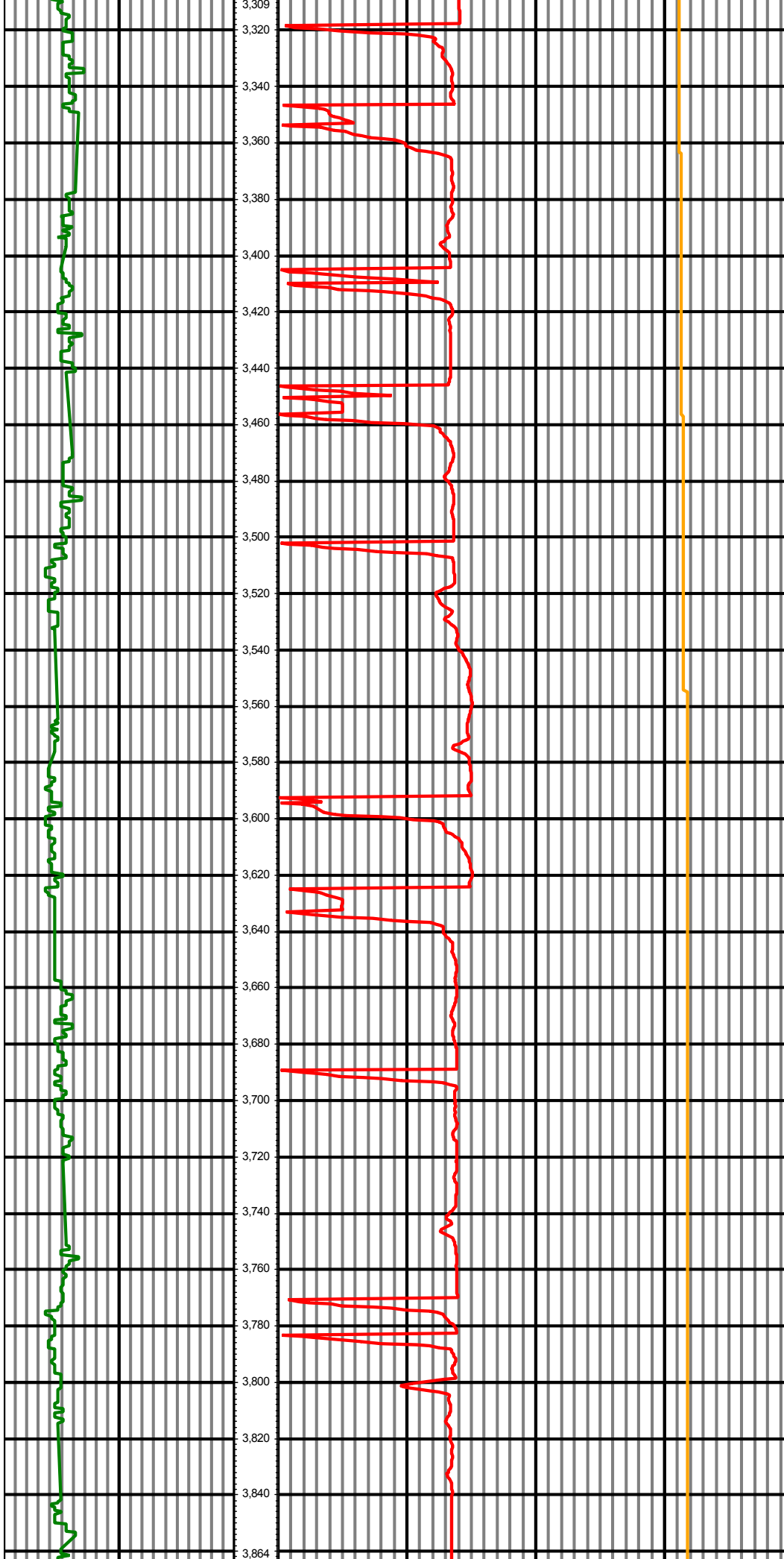
MD: 3012.00 INC: 22.64 AZ: 164.33 TVD22839.94

MD: 3106.00 INC: 20.44 AZ: 162.74 TVD22861.37

MD: 3200.00 INC: 17.89 AZ: 159.84 TVD22870.15

MD: 3294.00 INC: 15.78 AZ: 158.70 TVD22880.12

MD: 3388.00 INC: 13.36 AZ: 161.86 TVD22891.09



MD: 3482.00 INC: 11.87 AZ: 166.17 TVD: 33342.882

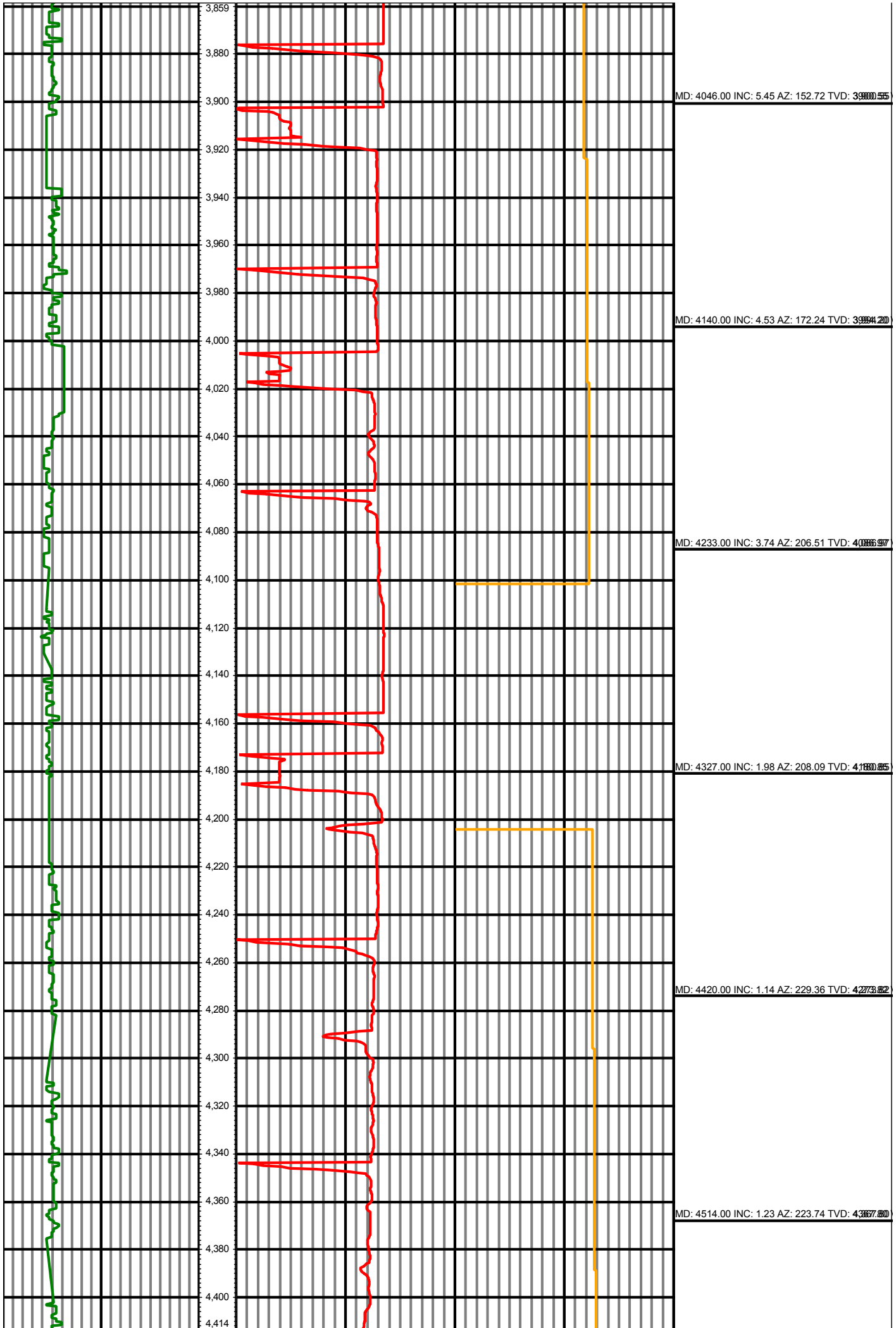
MD: 3576.00 INC: 10.64 AZ: 168.54 TVD: 33465.007

MD: 3670.00 INC: 9.01 AZ: 164.85 TVD: 33527.653

MD: 3765.00 INC: 8.79 AZ: 160.28 TVD: 33621.499

MD: 3859.00 INC: 6.68 AZ: 154.57 TVD: 33714.653

MD: 3953.00 INC: 6.20 AZ: 149.91 TVD: 33808.003



MD: 4046.00 INC: 5.45 AZ: 152.72 TVD: 3900.55

MD: 4140.00 INC: 4.53 AZ: 172.24 TVD: 3994.20

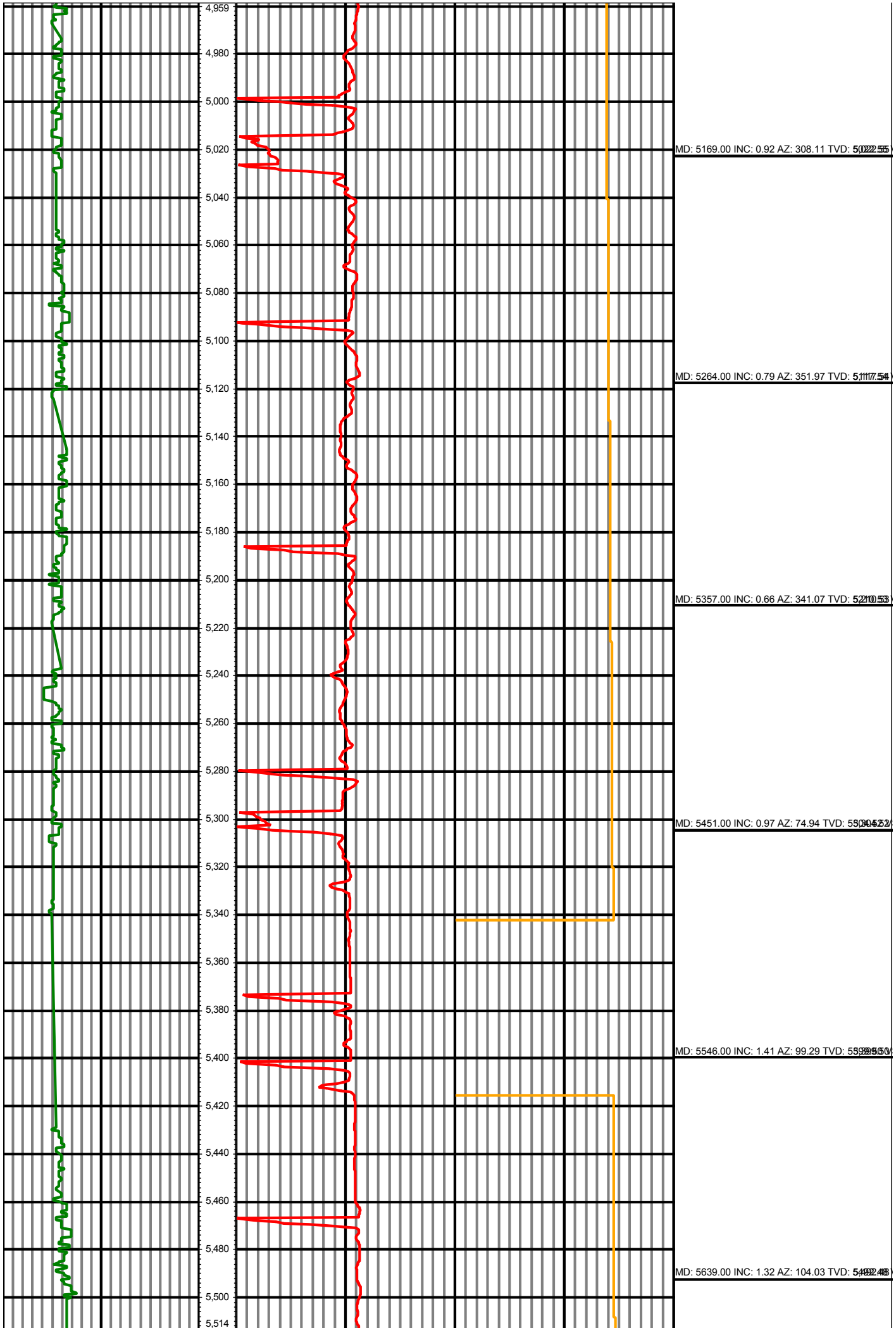
MD: 4233.00 INC: 3.74 AZ: 206.51 TVD: 4086.97

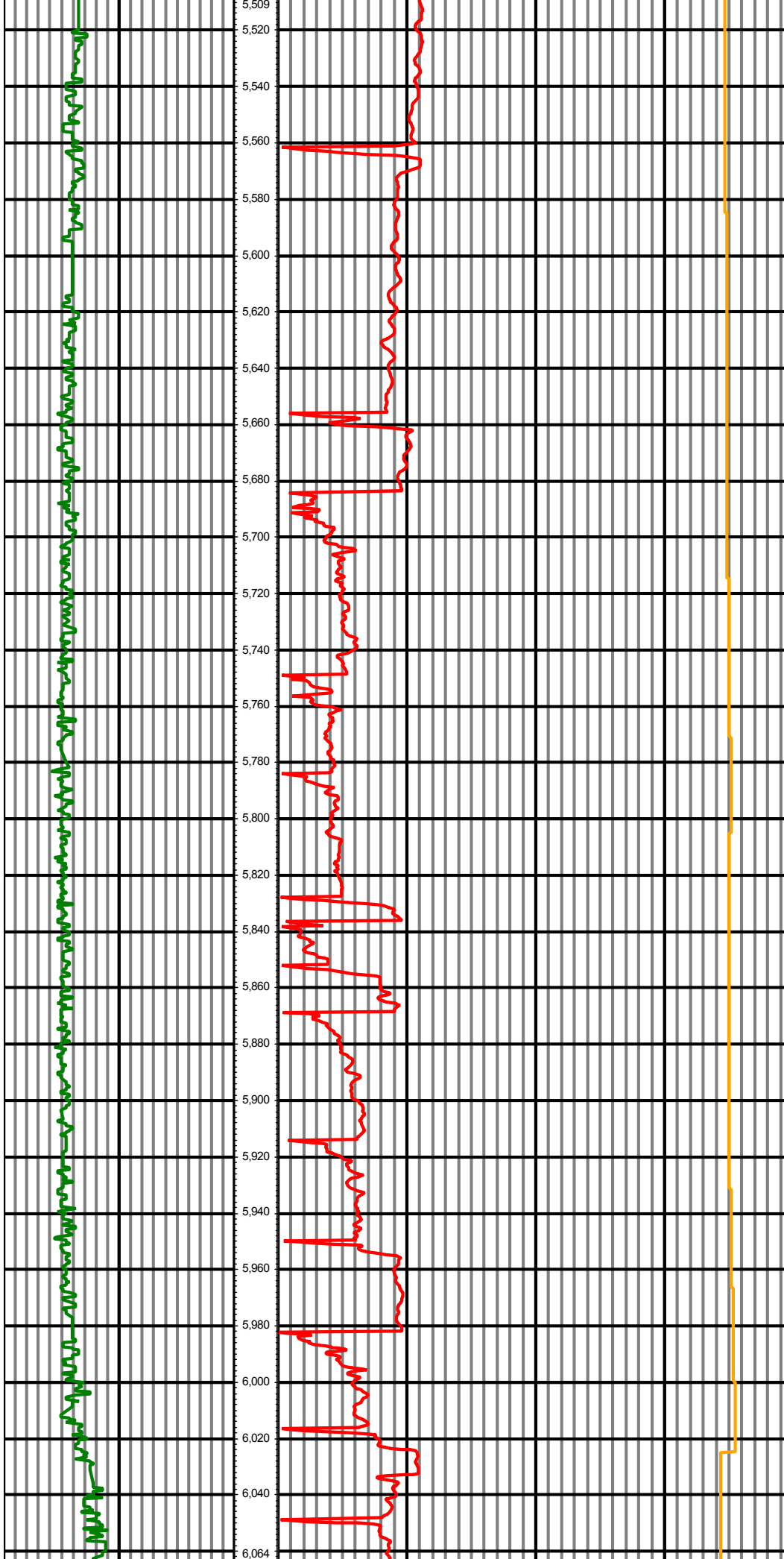
MD: 4327.00 INC: 1.98 AZ: 208.09 TVD: 4180.85

MD: 4420.00 INC: 1.14 AZ: 229.36 TVD: 4273.82

MD: 4514.00 INC: 1.23 AZ: 223.74 TVD: 4367.80







5,509  
5,520  
5,540  
5,560  
5,580  
5,600  
5,620  
5,640  
5,660  
5,680  
5,700  
5,720  
5,740  
5,760  
5,780  
5,800  
5,820  
5,840  
5,860  
5,880  
5,900  
5,920  
5,940  
5,960  
5,980  
6,000  
6,020  
6,040  
6,064

MD: 5733.00 INC: 1.27 AZ: 93.05 TVD: 55889.5

MD: 5827.00 INC: 1.32 AZ: 79.34 TVD: 56889.3

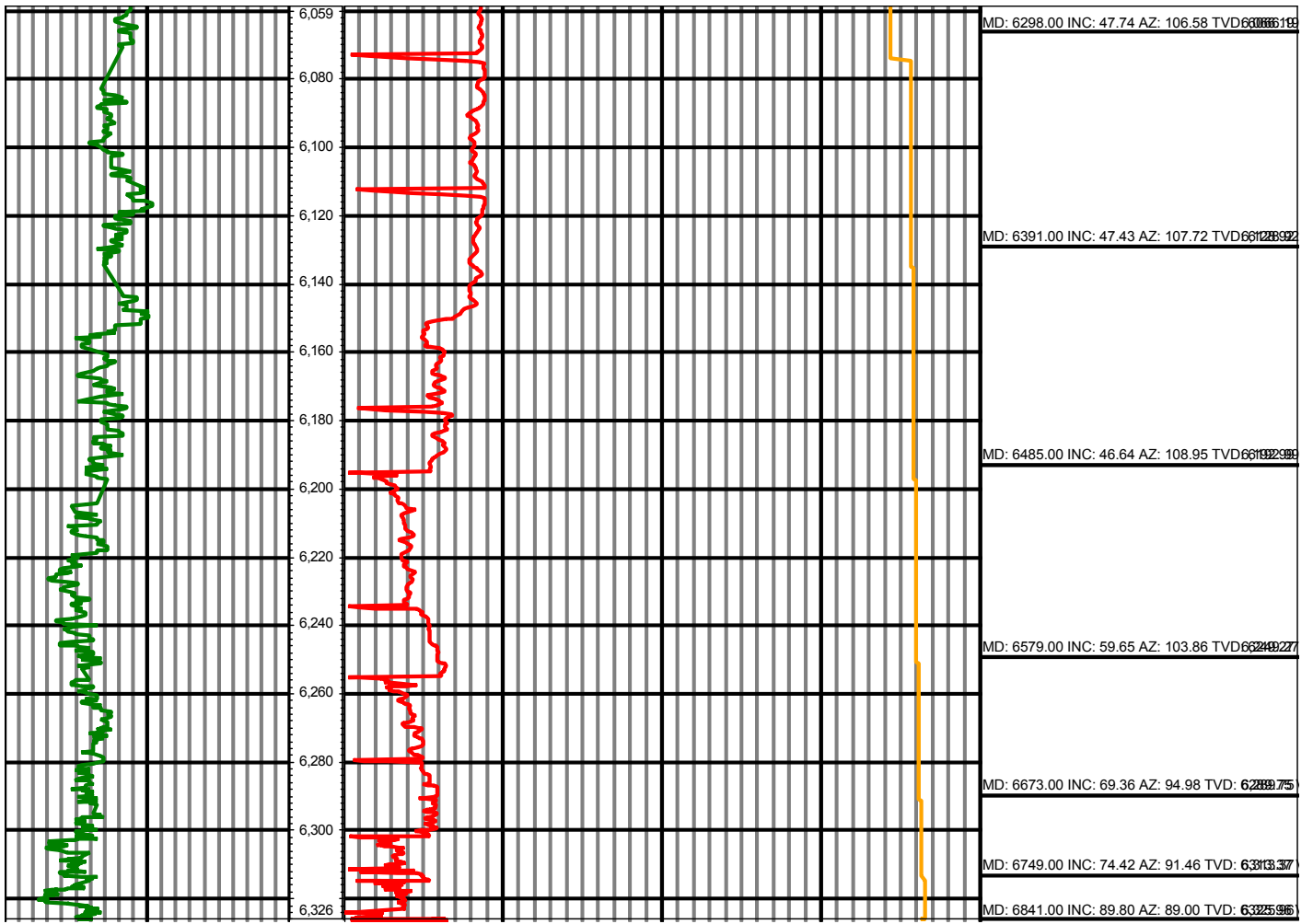
MD: 5921.00 INC: 16.04 AZ: 62.20 TVD: 57773.10

MD: 6014.00 INC: 30.02 AZ: 74.85 TVD: 58888.53

MD: 6109.00 INC: 43.96 AZ: 88.83 TVD: 59984.35

MD: 6203.00 INC: 45.80 AZ: 102.27 TVD: 60001.11

MD: 6300.00 INC: 47.74 AZ: 100.50 TVD: 60000.00



0.00 GR(API) 300.00 TVD 0.00 BOP(FT/HR) 1,000.00 0.00 TEMP(degF) 220.00 Surveys (MD/INC/AZ/TVD/S)